



# Full wwPDB X-ray Structure Validation Report ⓘ

Aug 9, 2020 – 06:45 PM BST

PDB ID : 4ZBK  
Title : Crystal Structure of human GGT1 in complex with GGsTop inhibitor  
Authors : Terzyan, S.; Hanigan, M.  
Deposited on : 2015-04-14  
Resolution : 2.18 Å(reported)

This is a Full wwPDB X-ray Structure Validation Report for a publicly released PDB entry.

We welcome your comments at [validation@mail.wwpdb.org](mailto:validation@mail.wwpdb.org)

A user guide is available at

<https://www.wwpdb.org/validation/2017/XrayValidationReportHelp>

with specific help available everywhere you see the ⓘ symbol.

---

The following versions of software and data (see [references ⓘ](#)) were used in the production of this report:

MolProbity : 4.02b-467  
Mogul : 1.8.5 (274361), CSD as541be (2020)  
Xtriage (Phenix) : 1.13  
EDS : 2.13.1  
Percentile statistics : 20191225.v01 (using entries in the PDB archive December 25th 2019)  
Refmac : 5.8.0158  
CCP4 : 7.0.044 (Gargrove)  
Ideal geometry (proteins) : Engh & Huber (2001)  
Ideal geometry (DNA, RNA) : Parkinson et al. (1996)  
Validation Pipeline (wwPDB-VP) : 2.13.1

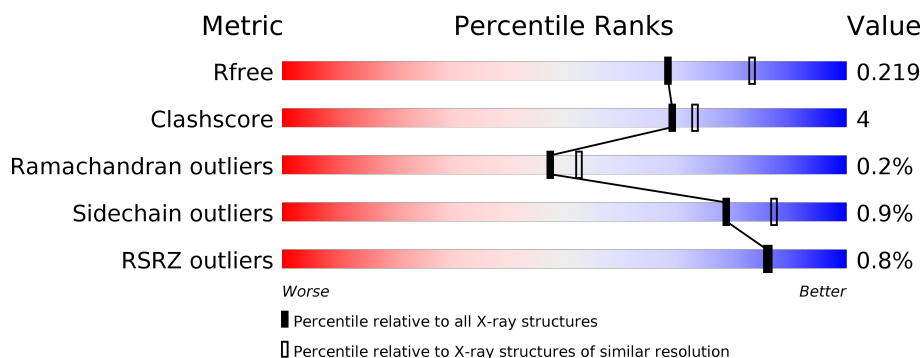
# 1 Overall quality at a glance

The following experimental techniques were used to determine the structure:

## *X-RAY DIFFRACTION*

The reported resolution of this entry is 2.18 Å.

Percentile scores (ranging between 0-100) for global validation metrics of the entry are shown in the following graphic. The table shows the number of entries on which the scores are based.



Metric	Whole archive (#Entries)	Similar resolution (#Entries, resolution range(Å))
$R_{free}$	130704	6864 (2.20-2.16)
Clashscore	141614	7689 (2.20-2.16)
Ramachandran outliers	138981	7564 (2.20-2.16)
Sidechain outliers	138945	7564 (2.20-2.16)
RSRZ outliers	127900	6738 (2.20-2.16)

The table below summarises the geometric issues observed across the polymeric chains and their fit to the electron density. The red, orange, yellow and green segments on the lower bar indicate the fraction of residues that contain outliers for  $\geq 3$ , 2, 1 and 0 types of geometric quality criteria respectively. A grey segment represents the fraction of residues that are not modelled. The numeric value for each fraction is indicated below the corresponding segment, with a dot representing fractions  $\leq 5\%$ . The upper red bar (where present) indicates the fraction of residues that have poor fit to the electron density. The numeric value is given above the bar.

Mol	Chain	Length	Quality of chain
1	A	353	<div> <div style="width: 100%; height: 10px; background: linear-gradient(to right, red 1%, orange 1%, yellow 1%, green 89%, grey 7%);"></div> <div style="display: flex; justify-content: space-between; width: 100%;"> <span>%</span> <span>89%</span> <span>7%</span> </div> </div>
2	B	189	<div> <div style="width: 100%; height: 10px; background: linear-gradient(to right, green 88%, yellow 11%, grey 1%);"></div> <div style="display: flex; justify-content: space-between; width: 100%;"> <span>88%</span> <span>11%</span> </div> </div>

## 2 Entry composition [i](#)

There are 8 unique types of molecules in this entry. The entry contains 4567 atoms, of which 0 are hydrogens and 0 are deuteriums.

In the tables below, the ZeroOcc column contains the number of atoms modelled with zero occupancy, the AltConf column contains the number of residues with at least one atom in alternate conformation and the Trace column contains the number of residues modelled with at most 2 atoms.

- Molecule 1 is a protein called Gamma-glutamyltranspeptidase 1.

Mol	Chain	Residues	Atoms					ZeroOcc	AltConf	Trace
1	A	342	Total	C	N	O	S	0	7	0
			2679	1696	478	496	9			

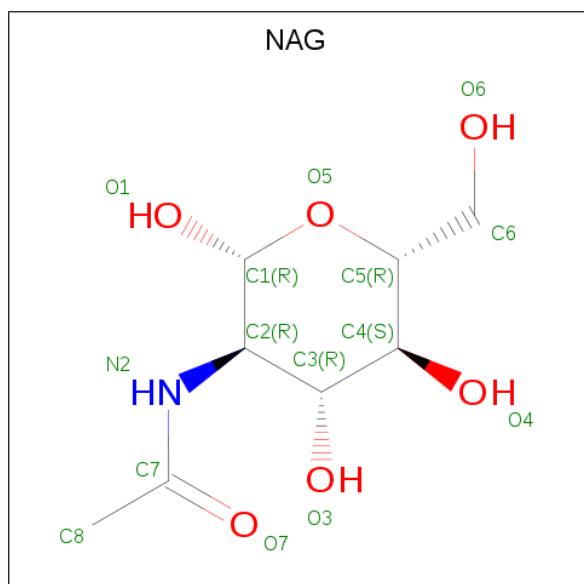
There is a discrepancy between the modelled and reference sequences:

Chain	Residue	Modelled	Actual	Comment	Reference
A	272	ALA	VAL	variant	UNP P19440

- Molecule 2 is a protein called Gamma-glutamyltranspeptidase 1.

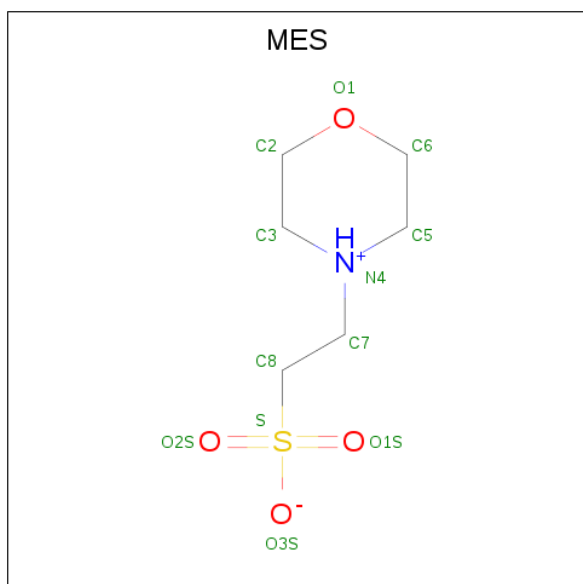
Mol	Chain	Residues	Atoms					ZeroOcc	AltConf	Trace
2	B	189	Total	C	N	O	S	0	4	0
			1429	897	250	276	6			

- Molecule 3 is 2-acetamido-2-deoxy-beta-D-glucopyranose (three-letter code: NAG) (formula:  $C_8H_{15}NO_6$ ).



Mol	Chain	Residues	Atoms				ZeroOcc	AltConf
3	A	1	Total	C	N	O	0	0
			14	8	1	5		
3	A	1	Total	C	N	O	0	0
			14	8	1	5		
3	A	1	Total	C	N	O	0	0
			14	8	1	5		
3	A	1	Total	C	N	O	0	0
			14	8	1	5		
3	B	1	Total	C	N	O	0	0
			14	8	1	5		

- Molecule 4 is 2-(N-MORPHOLINO)-ETHANESULFONIC ACID (three-letter code: MES) (formula: C<sub>6</sub>H<sub>13</sub>NO<sub>4</sub>S).



Mol	Chain	Residues	Atoms					ZeroOcc	AltConf
4	A	1	Total	C	N	O	S	0	0
			12	6	1	4	1		
4	A	1	Total	C	N	O	S	0	0
			12	6	1	4	1		

- Molecule 5 is CHLORIDE ION (three-letter code: CL) (formula: Cl).

Mol	Chain	Residues	Atoms		ZeroOcc	AltConf
5	B	1	Total	Cl	0	0
			1	1		

*Continued on next page...*

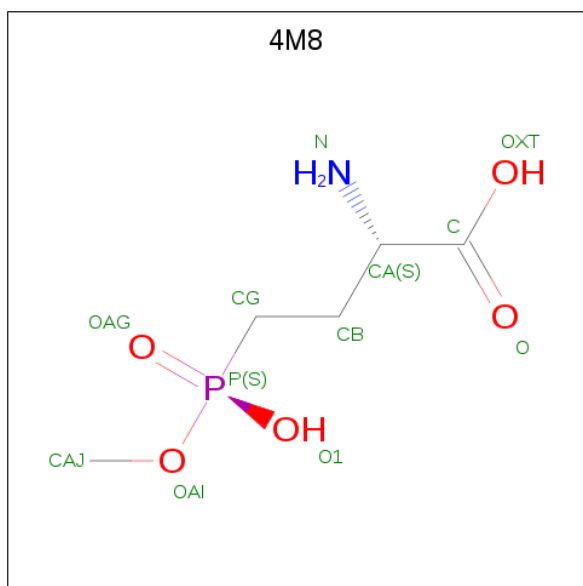
*Continued from previous page...*

Mol	Chain	Residues	Atoms	ZeroOcc	AltConf
5	A	1	Total Cl 1 1	0	0

- Molecule 6 is SODIUM ION (three-letter code: NA) (formula: Na).

Mol	Chain	Residues	Atoms	ZeroOcc	AltConf
6	A	1	Total Na 1 1	0	0

- Molecule 7 is (2S)-2-amino-4-[(S)-hydroxy(methoxy)phosphoryl]butanoic acid (three-letter code: 4M8) (formula: C<sub>5</sub>H<sub>12</sub>NO<sub>5</sub>P).



Mol	Chain	Residues	Atoms	ZeroOcc	AltConf
7	B	1	Total C N O P 11 5 1 4 1	0	0

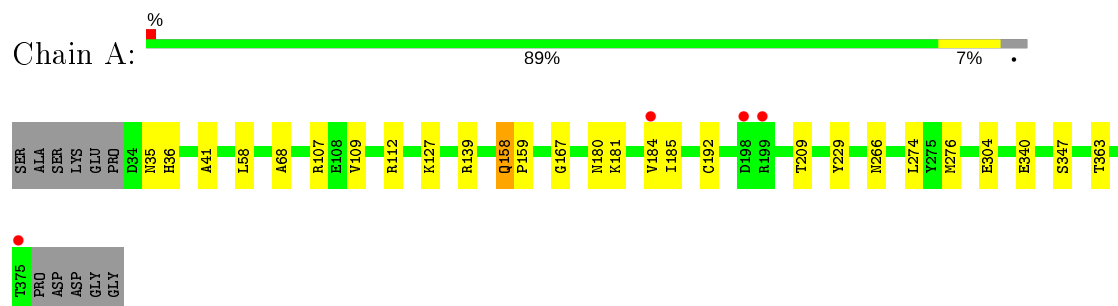
- Molecule 8 is water.

Mol	Chain	Residues	Atoms	ZeroOcc	AltConf
8	A	211	Total O 211 211	0	0
8	B	126	Total O 126 126	0	0

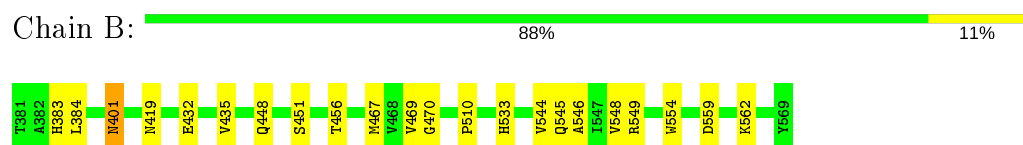
### 3 Residue-property plots [i](#)

These plots are drawn for all protein, RNA, DNA and oligosaccharide chains in the entry. The first graphic for a chain summarises the proportions of the various outlier classes displayed in the second graphic. The second graphic shows the sequence view annotated by issues in geometry and electron density. Residues are color-coded according to the number of geometric quality criteria for which they contain at least one outlier: green = 0, yellow = 1, orange = 2 and red = 3 or more. A red dot above a residue indicates a poor fit to the electron density ( $RSRZ > 2$ ). Stretches of 2 or more consecutive residues without any outlier are shown as a green connector. Residues present in the sample, but not in the model, are shown in grey.

- Molecule 1: Gamma-glutamyltranspeptidase 1



- Molecule 2: Gamma-glutamyltranspeptidase 1



## 4 Data and refinement statistics

Property	Value	Source
Space group	C 2 2 21	Depositor
Cell constants a, b, c, $\alpha$ , $\beta$ , $\gamma$	105.70Å 123.55Å 104.19Å 90.00° 90.00° 90.00°	Depositor
Resolution (Å)	47.13 – 2.18 47.13 – 2.18	Depositor EDS
% Data completeness (in resolution range)	96.4 (47.13-2.18) 96.4 (47.13-2.18)	Depositor EDS
$R_{merge}$	0.08	Depositor
$R_{sym}$	(Not available)	Depositor
$\langle I/\sigma(I) \rangle$ <sup>1</sup>	2.73 (at 2.18Å)	Xtriage
Refinement program	REFMAC 5.8.0073	Depositor
R, $R_{free}$	0.159 , 0.217 0.161 , 0.219	Depositor DCC
$R_{free}$ test set	1715 reflections (4.96%)	wwPDB-VP
Wilson B-factor (Å <sup>2</sup> )	37.5	Xtriage
Anisotropy	0.025	Xtriage
Bulk solvent $k_{sol}$ (e/Å <sup>3</sup> ), $B_{sol}$ (Å <sup>2</sup> )	0.32 , 45.5	EDS
L-test for twinning <sup>2</sup>	$\langle  L  \rangle = 0.48$ , $\langle L^2 \rangle = 0.31$	Xtriage
Estimated twinning fraction	No twinning to report.	Xtriage
$F_o, F_c$ correlation	0.97	EDS
Total number of atoms	4567	wwPDB-VP
Average B, all atoms (Å <sup>2</sup> )	40.0	wwPDB-VP

Xtriage's analysis on translational NCS is as follows: *The largest off-origin peak in the Patterson function is 5.17% of the height of the origin peak. No significant pseudotranslation is detected.*

<sup>1</sup>Intensities estimated from amplitudes.

<sup>2</sup>Theoretical values of  $\langle |L| \rangle$ ,  $\langle L^2 \rangle$  for acentric reflections are 0.5, 0.333 respectively for untwinned datasets, and 0.375, 0.2 for perfectly twinned datasets.

## 5 Model quality

### 5.1 Standard geometry

Bond lengths and bond angles in the following residue types are not validated in this section: 4M8, NA, NAG, MES, CL

The Z score for a bond length (or angle) is the number of standard deviations the observed value is removed from the expected value. A bond length (or angle) with  $|Z| > 5$  is considered an outlier worth inspection. RMSZ is the root-mean-square of all Z scores of the bond lengths (or angles).

Mol	Chain	Bond lengths		Bond angles	
		RMSZ	# Z  >5	RMSZ	# Z  >5
1	A	0.53	0/2750	0.66	0/3726
2	B	0.56	0/1469	0.67	0/2006
All	All	0.54	0/4219	0.66	0/5732

There are no bond length outliers.

There are no bond angle outliers.

There are no chirality outliers.

There are no planarity outliers.

### 5.2 Too-close contacts

In the following table, the Non-H and H(model) columns list the number of non-hydrogen atoms and hydrogen atoms in the chain respectively. The H(added) column lists the number of hydrogen atoms added and optimized by MolProbity. The Clashes column lists the number of clashes within the asymmetric unit, whereas Symm-Clashes lists symmetry related clashes.

Mol	Chain	Non-H	H(model)	H(added)	Clashes	Symm-Clashes
1	A	2679	0	2696	19	0
2	B	1429	0	1408	16	0
3	A	70	0	65	2	0
3	B	14	0	13	1	0
4	A	24	0	26	1	0
5	A	1	0	0	0	0
5	B	1	0	0	1	0
6	A	1	0	0	0	0
7	B	11	0	10	0	0
8	A	211	0	0	3	0
8	B	126	0	0	1	0
All	All	4567	0	4218	31	0



The all-atom clashscore is defined as the number of clashes found per 1000 atoms (including hydrogen atoms). The all-atom clashscore for this structure is 4.

All (31) close contacts within the same asymmetric unit are listed below, sorted by their clash magnitude.

Atom-1	Atom-2	Interatomic distance (Å)	Clash overlap (Å)
1:A:340:GLU:HB3	3:A:603:NAG:H82	1.76	0.68
1:A:363:THR:HG23	3:B:1101:NAG:H61	1.79	0.65
2:B:432:GLU:HG2	2:B:510:PRO:HD3	1.80	0.64
2:B:533[C]:HIS:CD2	8:B:1283:HOH:O	2.51	0.62
1:A:266:ASN:HA	1:A:274:LEU:O	2.03	0.58
8:A:717:HOH:O	2:B:562:LYS:HE3	2.04	0.58
1:A:139[B]:ARG:HG3	1:A:229:TYR:CE2	2.39	0.57
1:A:276:MET:HB3	2:B:456[B]:THR:HG22	1.86	0.57
1:A:109[A]:VAL:HG12	2:B:448:GLN:HG2	1.91	0.53
2:B:401:ASN:HB3	2:B:419:ASN:OD1	2.10	0.51
2:B:544:VAL:O	2:B:559:ASP:HB2	2.12	0.50
2:B:383:HIS:CE1	2:B:470:GLY:HA3	2.46	0.49
1:A:127:LYS:HE2	1:A:184:VAL:HG21	1.94	0.49
1:A:112[A]:ARG:HG2	8:A:714:HOH:O	2.13	0.49
1:A:112[A]:ARG:NH2	8:A:706:HOH:O	2.46	0.48
1:A:181:LYS:O	1:A:185:ILE:HG12	2.13	0.48
2:B:467:MET:HG3	2:B:548:VAL:HG22	1.97	0.47
1:A:41:ALA:HB1	1:A:58:LEU:HD13	1.97	0.46
1:A:167:GLY:CA	1:A:209:THR:HG22	2.46	0.45
1:A:340:GLU:CB	3:A:603:NAG:H82	2.46	0.45
1:A:180:ASN:HD21	4:A:606:MES:H51	1.82	0.45
1:A:68:ALA:HA	2:B:384:LEU:HD21	1.98	0.44
2:B:432:GLU:HB2	2:B:435:VAL:CG2	2.47	0.44
1:A:167:GLY:HA3	1:A:209:THR:HG22	2.01	0.43
2:B:545:GLN:NE2	5:B:1103:CL:CL	2.88	0.43
1:A:35:ASN:OD1	1:A:36:HIS:N	2.51	0.43
2:B:549:ARG:HB2	2:B:554:TRP:CZ3	2.54	0.42
1:A:107:ARG:CZ	2:B:451:SER:HB2	2.49	0.42
2:B:469:VAL:HG23	2:B:546:ALA:HB2	2.03	0.41
1:A:158:GLN:HB3	1:A:159:PRO:HD3	2.01	0.41

There are no symmetry-related clashes.

## 5.3 Torsion angles [i](#)

### 5.3.1 Protein backbone [i](#)

In the following table, the Percentiles column shows the percent Ramachandran outliers of the chain as a percentile score with respect to all X-ray entries followed by that with respect to entries of similar resolution.

The Analysed column shows the number of residues for which the backbone conformation was analysed, and the total number of residues.

Mol	Chain	Analysed	Favoured	Allowed	Outliers	Percentiles	
1	A	347/353 (98%)	342 (99%)	5 (1%)	0	100	100
2	B	191/189 (101%)	181 (95%)	9 (5%)	1 (0%)	29	28
All	All	538/542 (99%)	523 (97%)	14 (3%)	1 (0%)	47	52

All (1) Ramachandran outliers are listed below:

Mol	Chain	Res	Type
2	B	401	ASN

### 5.3.2 Protein sidechains [i](#)

In the following table, the Percentiles column shows the percent sidechain outliers of the chain as a percentile score with respect to all X-ray entries followed by that with respect to entries of similar resolution.

The Analysed column shows the number of residues for which the sidechain conformation was analysed, and the total number of residues.

Mol	Chain	Analysed	Rotameric	Outliers	Percentiles	
1	A	280/282 (99%)	276 (99%)	4 (1%)	67	78
2	B	155/151 (103%)	155 (100%)	0	100	100
All	All	435/433 (100%)	431 (99%)	4 (1%)	78	87

All (4) residues with a non-rotameric sidechain are listed below:

Mol	Chain	Res	Type
1	A	158	GLN
1	A	192	CYS
1	A	304	GLU
1	A	347	SER

Some sidechains can be flipped to improve hydrogen bonding and reduce clashes. There are no such sidechains identified.

### 5.3.3 RNA [i](#)

There are no RNA molecules in this entry.

## 5.4 Non-standard residues in protein, DNA, RNA chains [i](#)

There are no non-standard protein/DNA/RNA residues in this entry.

## 5.5 Carbohydrates [i](#)

There are no monosaccharides in this entry.

## 5.6 Ligand geometry [i](#)

Of 12 ligands modelled in this entry, 3 are monoatomic - leaving 9 for Mogul analysis.

In the following table, the Counts columns list the number of bonds (or angles) for which Mogul statistics could be retrieved, the number of bonds (or angles) that are observed in the model and the number of bonds (or angles) that are defined in the Chemical Component Dictionary. The Link column lists molecule types, if any, to which the group is linked. The Z score for a bond length (or angle) is the number of standard deviations the observed value is removed from the expected value. A bond length (or angle) with  $|Z| > 2$  is considered an outlier worth inspection. RMSZ is the root-mean-square of all Z scores of the bond lengths (or angles).

Mol	Type	Chain	Res	Link	Bond lengths			Bond angles		
					Counts	RMSZ	# Z  > 2	Counts	RMSZ	# Z  > 2
3	NAG	A	603	1	14,14,15	0.57	0	17,19,21	1.10	2 (11%)
4	MES	A	606	-	12,12,12	2.35	3 (25%)	14,16,16	1.89	3 (21%)
7	4M8	B	1102	2	3,10,11	1.18	1 (33%)	0,12,15	0.00	-
3	NAG	B	1101	2	14,14,15	0.82	1 (7%)	17,19,21	0.73	0
3	NAG	A	602	1	14,14,15	0.65	0	17,19,21	1.49	3 (17%)
4	MES	A	607	-	12,12,12	1.86	3 (25%)	14,16,16	1.52	3 (21%)
3	NAG	A	601	1	14,14,15	0.55	0	17,19,21	0.88	1 (5%)
3	NAG	A	605	1	14,14,15	0.57	0	17,19,21	2.09	3 (17%)
3	NAG	A	604	1	14,14,15	0.49	0	17,19,21	1.83	3 (17%)

In the following table, the Chirals column lists the number of chiral outliers, the number of chiral centers analysed, the number of these observed in the model and the number defined in the

Chemical Component Dictionary. Similar counts are reported in the Torsion and Rings columns.  
'-' means no outliers of that kind were identified.

Mol	Type	Chain	Res	Link	Chirals	Torsions	Rings
3	NAG	A	603	1	-	0/6/23/26	0/1/1/1
4	MES	A	606	-	-	4/6/14/14	0/1/1/1
7	4M8	B	1102	2	-	0/3/11/13	-
3	NAG	B	1101	2	-	4/6/23/26	0/1/1/1
3	NAG	A	602	1	-	0/6/23/26	0/1/1/1
4	MES	A	607	-	-	2/6/14/14	0/1/1/1
3	NAG	A	601	1	-	0/6/23/26	0/1/1/1
3	NAG	A	605	1	-	2/6/23/26	0/1/1/1
3	NAG	A	604	1	-	2/6/23/26	0/1/1/1

All (8) bond length outliers are listed below:

Mol	Chain	Res	Type	Atoms	Z	Observed(Å)	Ideal(Å)
4	A	606	MES	C8-S	6.47	1.86	1.77
4	A	607	MES	C8-S	4.60	1.84	1.77
4	A	606	MES	O1S-S	2.94	1.53	1.45
4	A	607	MES	O2S-S	2.82	1.53	1.45
4	A	607	MES	O1S-S	2.59	1.52	1.45
4	A	606	MES	O2S-S	2.58	1.52	1.45
3	B	1101	NAG	O5-C1	-2.04	1.40	1.43
7	B	1102	4M8	CB-CG	-2.02	1.51	1.53

All (18) bond angle outliers are listed below:

Mol	Chain	Res	Type	Atoms	Z	Observed(°)	Ideal(°)
3	A	605	NAG	C1-O5-C5	6.14	120.51	112.19
3	A	604	NAG	C1-O5-C5	6.05	120.38	112.19
4	A	606	MES	O1S-S-C8	4.34	112.14	106.92
3	A	605	NAG	C4-C3-C2	-4.12	104.98	111.02
3	A	602	NAG	C2-N2-C7	3.92	128.48	122.90
4	A	606	MES	C6-C5-N4	3.20	114.96	110.10
3	A	603	NAG	C1-O5-C5	3.18	116.50	112.19
4	A	606	MES	O2S-S-C8	3.11	110.66	106.92
3	A	605	NAG	O5-C1-C2	3.10	116.19	111.29
3	A	602	NAG	C1-O5-C5	3.10	116.39	112.19
4	A	607	MES	O3S-S-C8	2.68	110.11	105.77
3	A	604	NAG	O5-C5-C6	2.64	111.34	107.20
4	A	607	MES	O2S-S-C8	2.34	109.73	106.92
4	A	607	MES	C5-N4-C3	2.31	114.03	108.83

*Continued on next page...*

*Continued from previous page...*

Mol	Chain	Res	Type	Atoms	Z	Observed(°)	Ideal(°)
3	A	603	NAG	C4-C3-C2	2.14	114.16	111.02
3	A	602	NAG	O5-C1-C2	2.13	114.65	111.29
3	A	601	NAG	O5-C5-C6	2.10	110.50	107.20
3	A	604	NAG	C3-C4-C5	2.03	113.87	110.24

There are no chirality outliers.

All (14) torsion outliers are listed below:

Mol	Chain	Res	Type	Atoms
4	A	606	MES	N4-C7-C8-S
4	A	606	MES	C7-C8-S-O1S
4	A	606	MES	C7-C8-S-O2S
3	B	1101	NAG	C4-C5-C6-O6
3	A	605	NAG	O5-C5-C6-O6
3	A	604	NAG	O5-C5-C6-O6
3	A	605	NAG	C4-C5-C6-O6
3	B	1101	NAG	O5-C5-C6-O6
4	A	606	MES	C7-C8-S-O3S
4	A	607	MES	C8-C7-N4-C3
3	A	604	NAG	C4-C5-C6-O6
3	B	1101	NAG	C3-C2-N2-C7
4	A	607	MES	C8-C7-N4-C5
3	B	1101	NAG	C1-C2-N2-C7

There are no ring outliers.

3 monomers are involved in 4 short contacts:

Mol	Chain	Res	Type	Clashes	Symm-Clashes
3	A	603	NAG	2	0
4	A	606	MES	1	0
3	B	1101	NAG	1	0

## 5.7 Other polymers [i](#)

There are no such residues in this entry.

## 5.8 Polymer linkage issues [i](#)

There are no chain breaks in this entry.

## 6 Fit of model and data [i](#)

### 6.1 Protein, DNA and RNA chains [i](#)

In the following table, the column labelled ‘#RSRZ> 2’ contains the number (and percentage) of RSRZ outliers, followed by percent RSRZ outliers for the chain as percentile scores relative to all X-ray entries and entries of similar resolution. The OWAB column contains the minimum, median, 95<sup>th</sup> percentile and maximum values of the occupancy-weighted average B-factor per residue. The column labelled ‘Q< 0.9’ lists the number of (and percentage) of residues with an average occupancy less than 0.9.

Mol	Chain	Analysed	<RSRZ>	#RSRZ>2	OWAB(Å <sup>2</sup> )	Q<0.9
1	A	342/353 (96%)	-0.43	4 (1%) 79 79	25, 37, 61, 89	1 (0%)
2	B	189/189 (100%)	-0.51	0 100 100	25, 34, 56, 85	0
All	All	531/542 (97%)	-0.46	4 (0%) 86 86	25, 36, 61, 89	1 (0%)

All (4) RSRZ outliers are listed below:

Mol	Chain	Res	Type	RSRZ
1	A	184	VAL	2.4
1	A	199	ARG	2.4
1	A	375	THR	2.2
1	A	198	ASP	2.0

### 6.2 Non-standard residues in protein, DNA, RNA chains [i](#)

There are no non-standard protein/DNA/RNA residues in this entry.

### 6.3 Carbohydrates [i](#)

There are no monosaccharides in this entry.

### 6.4 Ligands [i](#)

In the following table, the Atoms column lists the number of modelled atoms in the group and the number defined in the chemical component dictionary. The B-factors column lists the minimum, median, 95<sup>th</sup> percentile and maximum values of B factors of atoms in the group. The column labelled ‘Q< 0.9’ lists the number of atoms with occupancy less than 0.9.

Mol	Type	Chain	Res	Atoms	RSCC	RSR	B-factors(Å <sup>2</sup> )	Q<0.9
3	NAG	A	601	14/15	0.78	0.22	70,87,99,100	0

*Continued on next page...*

*Continued from previous page...*

Mol	Type	Chain	Res	Atoms	RSCC	RSR	B-factors( $\text{\AA}^2$ )	Q<0.9
3	NAG	A	604	14/15	0.80	0.21	70,91,101,108	0
3	NAG	A	605	14/15	0.83	0.20	41,48,53,60	14
4	MES	A	607	12/12	0.84	0.21	82,86,105,108	0
3	NAG	A	602	14/15	0.88	0.19	53,60,64,65	0
4	MES	A	606	12/12	0.93	0.17	54,70,76,76	4
3	NAG	A	603	14/15	0.95	0.10	56,62,76,77	0
3	NAG	B	1101	14/15	0.96	0.10	41,48,58,69	0
5	CL	B	1103	1/1	0.97	0.11	67,67,67,67	0
6	NA	A	609	1/1	0.98	0.12	51,51,51,51	0
5	CL	A	608	1/1	0.99	0.09	32,32,32,32	0
7	4M8	B	1102	11/12	0.99	0.15	29,31,33,37	0

## 6.5 Other polymers [i](#)

There are no such residues in this entry.