



# Full wwPDB X-ray Structure Validation Report ⓘ

Aug 9, 2020 – 02:06 PM BST

PDB ID : 3ZE0  
Title : Integrin alphaIIB beta3 headpiece and RGD peptide complex  
Authors : Zhu, J.H.; Zhu, J.Q.; Springer, T.A.  
Deposited on : 2012-12-03  
Resolution : 2.95 Å(reported)

This is a Full wwPDB X-ray Structure Validation Report for a publicly released PDB entry.

We welcome your comments at [validation@mail.wwpdb.org](mailto:validation@mail.wwpdb.org)

A user guide is available at

<https://www.wwpdb.org/validation/2017/XrayValidationReportHelp>

with specific help available everywhere you see the ⓘ symbol.

---

The following versions of software and data (see [references ⓘ](#)) were used in the production of this report:

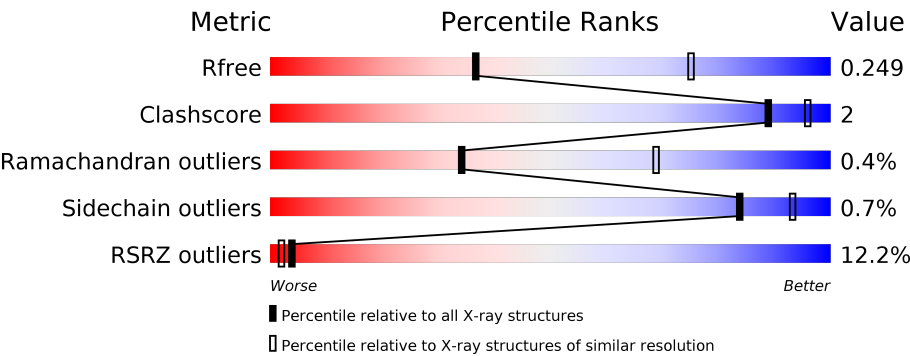
MolProbity : 4.02b-467  
Mogul : 1.8.5 (274361), CSD as541be (2020)  
Xtriage (Phenix) : 1.13  
EDS : 2.13.1  
Percentile statistics : 20191225.v01 (using entries in the PDB archive December 25th 2019)  
Refmac : 5.8.0158  
CCP4 : 7.0.044 (Gargrove)  
Ideal geometry (proteins) : Engh & Huber (2001)  
Ideal geometry (DNA, RNA) : Parkinson et al. (1996)  
Validation Pipeline (wwPDB-VP) : 2.13.1

# 1 Overall quality at a glance i

The following experimental techniques were used to determine the structure:  
*X-RAY DIFFRACTION*

The reported resolution of this entry is 2.95 Å.

Percentile scores (ranging between 0-100) for global validation metrics of the entry are shown in the following graphic. The table shows the number of entries on which the scores are based.



Metric	Whole archive (#Entries)	Similar resolution (#Entries, resolution range(Å))
$R_{free}$	130704	3104 (3.00-2.92)
Clashscore	141614	3462 (3.00-2.92)
Ramachandran outliers	138981	3340 (3.00-2.92)
Sidechain outliers	138945	3343 (3.00-2.92)
RSRZ outliers	127900	2986 (3.00-2.92)

The table below summarises the geometric issues observed across the polymeric chains and their fit to the electron density. The red, orange, yellow and green segments on the lower bar indicate the fraction of residues that contain outliers for  $\geq 3$ , 2, 1 and 0 types of geometric quality criteria respectively. A grey segment represents the fraction of residues that are not modelled. The numeric value for each fraction is indicated below the corresponding segment, with a dot representing fractions  $\leq 5\%$ . The upper red bar (where present) indicates the fraction of residues that have poor fit to the electron density. The numeric value is given above the bar.

Mol	Chain	Length	Quality of chain
1	A	457	<div><div></div><div><div></div><div></div><div></div><div></div></div><div>%95%. .</div></div>
1	C	457	<div><div></div><div><div></div><div></div><div></div><div></div></div><div>2%96% . . .</div></div>
2	B	472	<div><div></div><div><div></div><div></div><div></div><div></div></div><div>13%92%7% .</div></div>
2	D	472	<div><div></div><div><div></div><div></div><div></div><div></div></div><div>18%92%7% .</div></div>
3	E	221	<div><div></div><div><div></div><div></div><div></div><div></div></div><div>27%91%6% .</div></div>
3	H	221	<div><div></div><div><div></div><div></div><div></div><div></div></div><div>11%93%5% .</div></div>

Continued on next page...

*Continued from previous page...*

Mol	Chain	Length	Quality of chain
4	F	214	
4	L	214	
5	I	6	
5	J	6	
6	G	4	
6	M	4	
7	K	2	
7	N	2	

The following table lists non-polymeric compounds, carbohydrate monomers and non-standard residues in protein, DNA, RNA chains that are outliers for geometric or electron-density-fit criteria:

Mol	Type	Chain	Res	Chirality	Geometry	Clashes	Electron density
11	NAG	D	3099	-	-	-	X

## 2 Entry composition

There are 13 unique types of molecules in this entry. The entry contains 41622 atoms, of which 20222 are hydrogens and 0 are deuteriums.

In the tables below, the ZeroOcc column contains the number of atoms modelled with zero occupancy, the AltConf column contains the number of residues with at least one atom in alternate conformation and the Trace column contains the number of residues modelled with at most 2 atoms.

- Molecule 1 is a protein called INTEGRIN ALPHA-IIB.

Mol	Chain	Residues	Atoms						ZeroOcc	AltConf	Trace
1	A	455	Total	C	H	N	O	S	0	5	0
			6868	2235	3355	604	666	8			
1	C	453	Total	C	H	N	O	S	0	2	0
			6795	2214	3311	600	662	8			

- Molecule 2 is a protein called INTEGRIN BETA-3.

Mol	Chain	Residues	Atoms						ZeroOcc	AltConf	Trace
2	B	465	Total	C	H	N	O	S	6	1	0
			7098	2238	3506	613	708	33			
2	D	469	Total	C	H	N	O	S	14	1	0
			7146	2252	3526	619	715	34			

- Molecule 3 is a protein called 10E5 FAB HEAVY CHAIN.

Mol	Chain	Residues	Atoms						ZeroOcc	AltConf	Trace
3	E	216	Total	C	H	N	O	S	0	0	0
			3239	1041	1597	266	329	6			
3	H	216	Total	C	H	N	O	S	0	0	0
			3239	1041	1597	266	329	6			

- Molecule 4 is a protein called 10E5 FAB LIGHT CHAIN.

Mol	Chain	Residues	Atoms						ZeroOcc	AltConf	Trace
4	F	214	Total	C	H	N	O	S	0	0	0
			3187	1019	1550	268	341	9			
4	L	214	Total	C	H	N	O	S	0	0	0
			3187	1019	1550	268	341	9			

- Molecule 5 is a protein called RGD PEPTIDE.

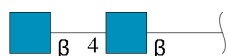
Mol	Chain	Residues	Atoms					ZeroOcc	AltConf	Trace
5	I	6	Total	C	H	N	O	0	0	0
			75	22	34	9	10			
5	J	6	Total	C	H	N	O	2	0	0
			75	22	34	9	10			

- Molecule 6 is an oligosaccharide called alpha-D-mannopyranose-(1-3)-beta-D-mannopyranose-(1-4)-2-acetamido-2-deoxy-beta-D-glucopyranose-(1-4)-2-acetamido-2-deoxy-beta-D-glucopyranose.



Mol	Chain	Residues	Atoms					ZeroOcc	AltConf	Trace
6	G	4	Total	C	H	N	O	0	0	0
			93	28	43	2	20			
6	M	4	Total	C	H	N	O	0	0	0
			93	28	43	2	20			

- Molecule 7 is an oligosaccharide called 2-acetamido-2-deoxy-beta-D-glucopyranose-(1-4)-2-acetamido-2-deoxy-beta-D-glucopyranose.



Mol	Chain	Residues	Atoms					ZeroOcc	AltConf	Trace
7	K	2	Total	C	H	N	O	0	0	0
			53	16	25	2	10			
7	N	2	Total	C	H	N	O	0	0	0
			53	16	25	2	10			

- Molecule 8 is SULFATE ION (three-letter code: SO4) (formula: O<sub>4</sub>S).



Mol	Chain	Residues	Atoms			ZeroOcc	AltConf
8	A	1	Total	O	S	0	0
			5	4	1		
8	A	1	Total	O	S	0	0
			5	4	1		
8	A	1	Total	O	S	0	0
			5	4	1		
8	C	1	Total	O	S	0	0
			5	4	1		
8	L	1	Total	O	S	0	0
			5	4	1		

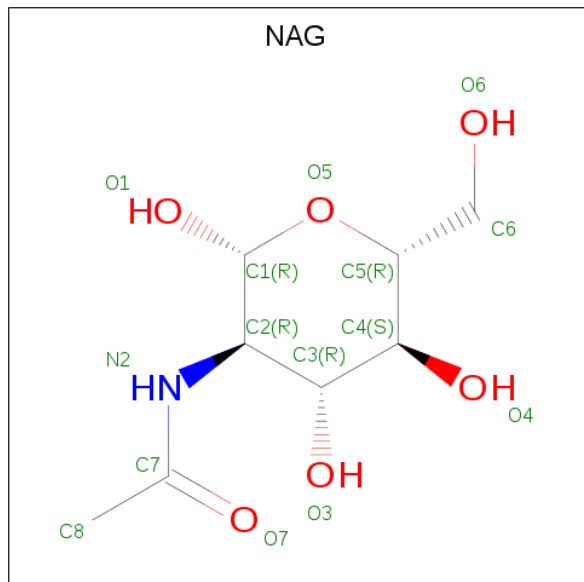
- Molecule 9 is CALCIUM ION (three-letter code: CA) (formula: Ca).

Mol	Chain	Residues	Atoms		ZeroOcc	AltConf
9	A	4	Total	Ca	0	0
			4	4		
9	C	4	Total	Ca	0	0
			4	4		

- Molecule 10 is MANGANESE (II) ION (three-letter code: MN) (formula: Mn).

Mol	Chain	Residues	Atoms		ZeroOcc	AltConf
10	B	3	Total	Mn	0	0
			3	3		
10	D	3	Total	Mn	0	0
			3	3		

- Molecule 11 is 2-acetamido-2-deoxy-beta-D-glucopyranose (three-letter code: NAG) (formula: C<sub>8</sub>H<sub>15</sub>NO<sub>6</sub>).



Mol	Chain	Residues	Atoms					ZeroOcc	AltConf
11	B	1	Total	C	H	N	O	0	0
			27	8	13	1	5		
11	D	1	Total	C	H	N	O	0	0
			27	8	13	1	5		

- Molecule 12 is CHLORIDE ION (three-letter code: CL) (formula: Cl).

Mol	Chain	Residues	Atoms		ZeroOcc	AltConf
12	C	1	Total	Cl	0	0
			1	1		

- Molecule 13 is water.

Mol	Chain	Residues	Atoms		ZeroOcc	AltConf
13	A	160	Total	O	0	0
			160	160		
13	B	71	Total	O	0	0
			71	71		
13	C	51	Total	O	0	0
			51	51		
13	D	26	Total	O	0	0
			26	26		
13	E	1	Total	O	0	0
			1	1		

*Continued on next page...*

*Continued from previous page...*

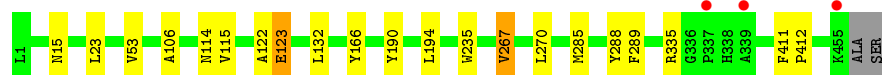
Mol	Chain	Residues	Atoms		ZeroOcc	AltConf
13	F	1	Total 1	O 1	0	0
13	H	8	Total 8	O 8	0	0
13	I	2	Total 2	O 2	0	0
13	J	1	Total 1	O 1	0	0
13	L	6	Total 6	O 6	0	0



### 3 Residue-property plots [i](#)

These plots are drawn for all protein, RNA, DNA and oligosaccharide chains in the entry. The first graphic for a chain summarises the proportions of the various outlier classes displayed in the second graphic. The second graphic shows the sequence view annotated by issues in geometry and electron density. Residues are color-coded according to the number of geometric quality criteria for which they contain at least one outlier: green = 0, yellow = 1, orange = 2 and red = 3 or more. A red dot above a residue indicates a poor fit to the electron density ( $RSRZ > 2$ ). Stretches of 2 or more consecutive residues without any outlier are shown as a green connector. Residues present in the sample, but not in the model, are shown in grey.

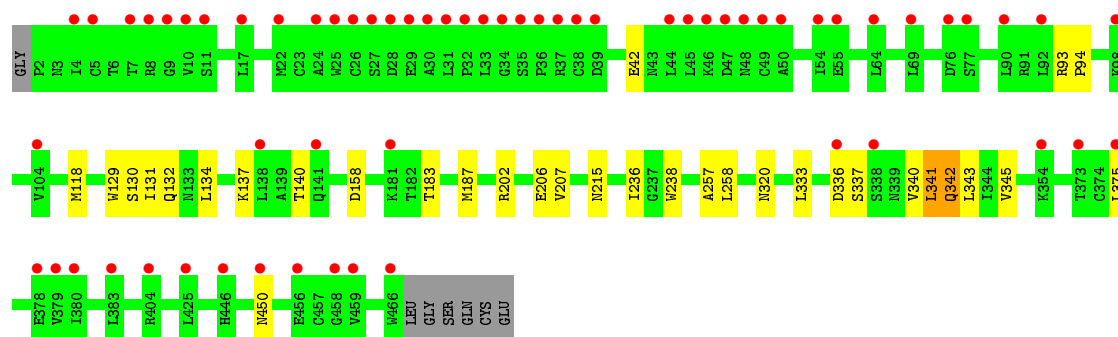
- Molecule 1: INTEGRIN ALPHA-IIB



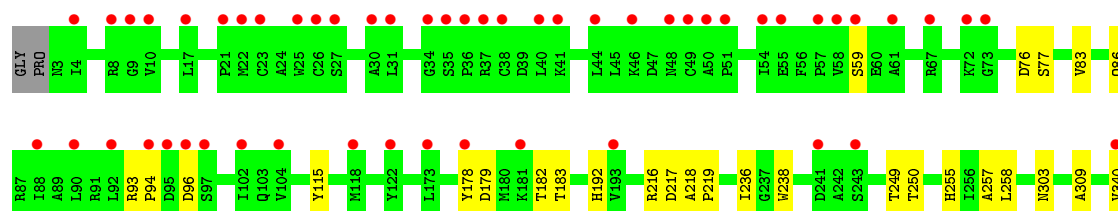
- Molecule 1: INTEGRIN ALPHA-IIB

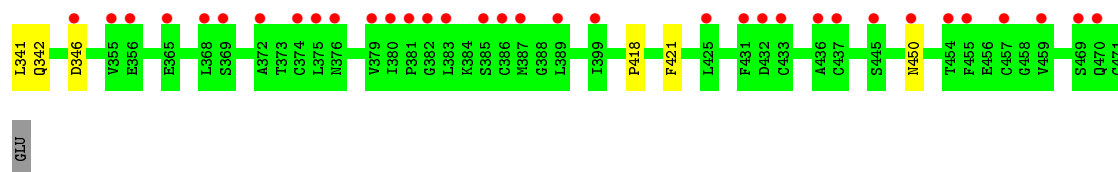


- Molecule 2: INTEGRIN BETA-3

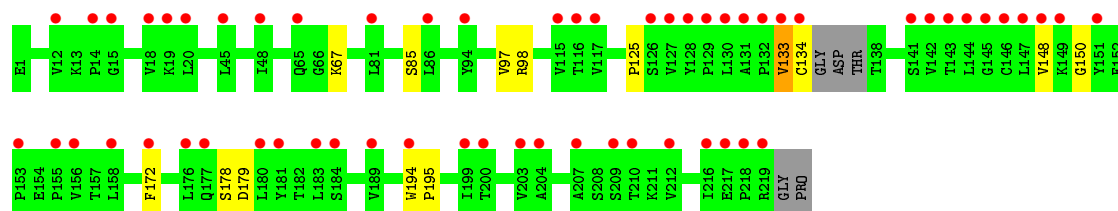


- Molecule 2: INTEGRIN BETA-3

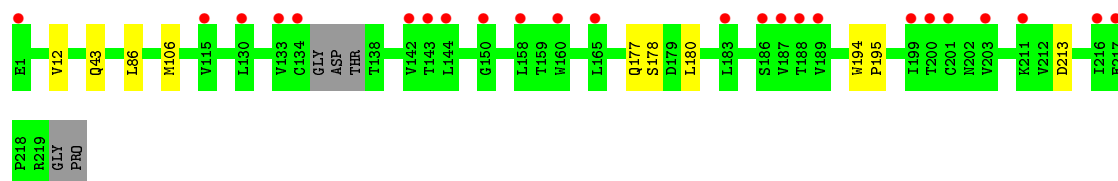




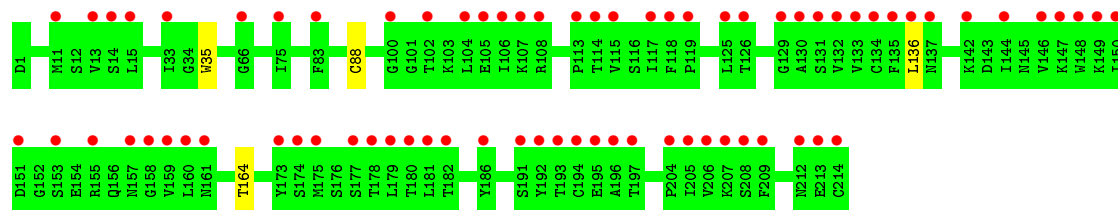
• Molecule 3: 10E5 FAB HEAVY CHAIN



• Molecule 3: 10E5 FAB HEAVY CHAIN



• Molecule 4: 10E5 FAB LIGHT CHAIN



• Molecule 4: 10E5 FAB LIGHT CHAIN

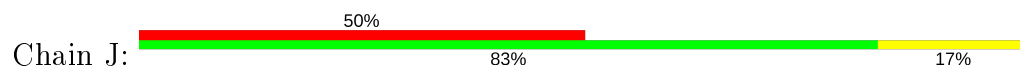


• Molecule 5: RGD PEPTIDE



There are no outlier residues recorded for this chain.

- Molecule 5: RGD PEPTIDE



- Molecule 6: alpha-D-mannopyranose-(1-3)-beta-D-mannopyranose-(1-4)-2-acetamido-2-deoxy-beta-D-glucopyranose-(1-4)-2-acetamido-2-deoxy-beta-D-glucopyranose



- Molecule 6: alpha-D-mannopyranose-(1-3)-beta-D-mannopyranose-(1-4)-2-acetamido-2-deoxy-beta-D-glucopyranose-(1-4)-2-acetamido-2-deoxy-beta-D-glucopyranose



- Molecule 7: 2-acetamido-2-deoxy-beta-D-glucopyranose-(1-4)-2-acetamido-2-deoxy-beta-D-glucopyranose



- Molecule 7: 2-acetamido-2-deoxy-beta-D-glucopyranose-(1-4)-2-acetamido-2-deoxy-beta-D-glucopyranose



## 4 Data and refinement statistics

Property	Value	Source
Space group	P 2 <sub>1</sub> 2 <sub>1</sub> 2	Depositor
Cell constants a, b, c, $\alpha$ , $\beta$ , $\gamma$	259.64 Å   144.68 Å   104.59 Å 90.00°   90.00°   90.00°	Depositor
Resolution (Å)	48.31 – 2.95 49.03 – 2.95	Depositor EDS
% Data completeness (in resolution range)	99.6 (48.31-2.95) 99.6 (49.03-2.95)	Depositor EDS
$R_{merge}$	0.11	Depositor
$R_{sym}$	(Not available)	Depositor
$\langle I/\sigma(I) \rangle$ <sup>1</sup>	2.23 (at 2.96 Å)	Xtriage
Refinement program	PHENIX (PHENIX.REFINE)	Depositor
R, $R_{free}$	0.185   ,   0.243 0.193   ,   0.249	Depositor DCC
$R_{free}$ test set	1071 reflections (1.29%)	wwPDB-VP
Wilson B-factor (Å <sup>2</sup> )	57.8	Xtriage
Anisotropy	0.000	Xtriage
Bulk solvent $k_{sol}$ (e/Å <sup>3</sup> ), $B_{sol}$ (Å <sup>2</sup> )	0.34 , 83.8	EDS
L-test for twinning <sup>2</sup>	$\langle  L  \rangle = 0.48$ , $\langle L^2 \rangle = 0.31$	Xtriage
Estimated twinning fraction	No twinning to report.	Xtriage
$F_o, F_c$ correlation	0.94	EDS
Total number of atoms	41622	wwPDB-VP
Average B, all atoms (Å <sup>2</sup> )	103.0	wwPDB-VP

Xtriage's analysis on translational NCS is as follows: *The largest off-origin peak in the Patterson function is 2.29% of the height of the origin peak. No significant pseudotranslation is detected.*

<sup>1</sup>Intensities estimated from amplitudes.

<sup>2</sup>Theoretical values of  $\langle |L| \rangle$ ,  $\langle L^2 \rangle$  for acentric reflections are 0.5, 0.333 respectively for untwinned datasets, and 0.375, 0.2 for perfectly twinned datasets.

## 5 Model quality ⓘ

### 5.1 Standard geometry ⓘ

Bond lengths and bond angles in the following residue types are not validated in this section: BMA, NAG, CL, CA, MN, SO4, MAN

The Z score for a bond length (or angle) is the number of standard deviations the observed value is removed from the expected value. A bond length (or angle) with  $|Z| > 5$  is considered an outlier worth inspection. RMSZ is the root-mean-square of all Z scores of the bond lengths (or angles).

Mol	Chain	Bond lengths		Bond angles	
		RMSZ	# $ Z  > 5$	RMSZ	# $ Z  > 5$
1	A	0.23	0/3625	0.40	0/4940
1	C	0.22	0/3587	0.38	0/4888
2	B	0.21	0/3662	0.39	0/4965
2	D	0.20	0/3686	0.36	0/4997
3	E	0.21	0/1684	0.38	0/2305
3	H	0.21	0/1684	0.39	0/2305
4	F	0.21	0/1673	0.37	0/2269
4	L	0.22	0/1673	0.37	0/2269
5	I	0.19	0/41	0.43	0/52
5	J	0.20	0/41	0.50	0/52
All	All	0.21	0/21356	0.38	0/29042

There are no bond length outliers.

There are no bond angle outliers.

There are no chirality outliers.

There are no planarity outliers.

### 5.2 Too-close contacts ⓘ

In the following table, the Non-H and H(model) columns list the number of non-hydrogen atoms and hydrogen atoms in the chain respectively. The H(added) column lists the number of hydrogen atoms added and optimized by MolProbity. The Clashes column lists the number of clashes within the asymmetric unit, whereas Symm-Clashes lists symmetry related clashes.

Mol	Chain	Non-H	H(model)	H(added)	Clashes	Symm-Clashes
1	A	3513	3355	3364	12	0
1	C	3484	3311	3320	9	0
2	B	3592	3506	3512	20	0

*Continued on next page...*

*Continued from previous page...*

Mol	Chain	Non-H	H(model)	H(added)	Clashes	Symm-Clashes
2	D	3620	3526	3531	18	0
3	E	1642	1597	1600	7	0
3	H	1642	1597	1600	5	0
4	F	1637	1550	1553	3	0
4	L	1637	1550	1553	3	0
5	I	41	34	34	0	0
5	J	41	34	34	1	0
6	G	50	43	43	0	0
6	M	50	43	43	0	0
7	K	28	25	25	0	0
7	N	28	25	25	1	0
8	A	15	0	0	1	0
8	C	5	0	0	0	0
8	L	5	0	0	0	0
9	A	4	0	0	0	0
9	C	4	0	0	0	0
10	B	3	0	0	0	0
10	D	3	0	0	0	0
11	B	14	13	13	0	0
11	D	14	13	13	1	0
12	C	1	0	0	0	0
13	A	160	0	0	3	1
13	B	71	0	0	0	0
13	C	51	0	0	0	1
13	D	26	0	0	1	0
13	E	1	0	0	0	0
13	F	1	0	0	0	0
13	H	8	0	0	0	0
13	I	2	0	0	0	0
13	J	1	0	0	1	0
13	L	6	0	0	1	0
All	All	21400	20222	20263	77	1

The all-atom clashscore is defined as the number of clashes found per 1000 atoms (including hydrogen atoms). The all-atom clashscore for this structure is 2.

All (77) close contacts within the same asymmetric unit are listed below, sorted by their clash magnitude.

Atom-1	Atom-2	Interatomic distance (Å)	Clash overlap (Å)
2:D:115:TYR:HH	2:D:192:HIS:HD1	1.10	0.91
2:D:250:THR:OG1	13:D:4007:HOH:O	2.11	0.69

*Continued on next page...*

*Continued from previous page...*

Atom-1	Atom-2	Interatomic distance (Å)	Clash overlap (Å)
1:C:224:ASP:OD1	1:C:225:SER:N	2.30	0.64
2:B:118:MET:SD	2:B:131:ILE:HD13	2.40	0.61
1:A:122:ALA:O	1:A:123:GLU:HB2	2.05	0.56
2:B:257:ALA:O	2:B:258:LEU:HB2	2.06	0.56
2:D:76:ASP:OD1	2:D:77:SER:N	2.40	0.55
2:B:130:SER:O	2:B:341:LEU:CD1	2.57	0.53
1:C:122:ALA:O	1:C:123:GLU:HB2	2.08	0.53
2:B:336:ASP:O	2:B:337:SER:OG	2.25	0.52
1:A:122:ALA:O	1:A:123:GLU:CB	2.57	0.52
11:D:3099:NAG:O6	7:N:2:NAG:O6	2.13	0.52
3:H:194:TRP:CG	3:H:195:PRO:HA	2.44	0.52
3:H:43:GLN:N	3:H:43:GLN:OE1	2.42	0.51
2:B:131:ILE:HD12	2:B:207:VAL:HG13	1.92	0.51
2:D:342:GLN:NE2	2:D:346:ASP:OD2	2.43	0.51
8:A:1456:SO4:O3	13:A:4152:HOH:O	2.19	0.50
2:B:340:VAL:O	2:B:341:LEU:CB	2.60	0.50
2:B:342:GLN:O	2:B:345:VAL:N	2.44	0.50
1:A:267:VAL:HG12	1:A:289:PHE:CE1	2.47	0.50
3:H:177:GLN:N	3:H:180:LEU:O	2.45	0.50
2:D:217:ASP:OD2	2:D:255:HIS:NE2	2.41	0.49
2:D:450:ASN:ND2	2:D:450:ASN:O	2.47	0.48
1:C:122:ALA:O	1:C:123:GLU:CB	2.62	0.48
2:B:129:TRP:CE3	2:B:130:SER:HA	2.49	0.48
2:B:450:ASN:ND2	2:B:450:ASN:O	2.47	0.48
2:D:257:ALA:O	2:D:258:LEU:HB2	2.14	0.47
2:B:202:ARG:NH2	2:B:206:GLU:OE2	2.46	0.47
2:B:340:VAL:O	2:B:341:LEU:HB2	2.14	0.47
5:J:492:GLY:N	13:J:4001:HOH:O	2.46	0.47
2:D:182:THR:OG1	2:D:183:THR:N	2.48	0.47
1:A:15[B]:ASN:ND2	13:A:4009:HOH:O	2.48	0.46
2:D:418:PRO:HB2	2:D:421:PHE:CD1	2.51	0.46
2:D:218:ALA:HB3	2:D:219:PRO:HD3	1.97	0.46
1:A:53:VAL:HG21	1:A:106:ALA:CB	2.46	0.46
2:D:83:VAL:O	2:D:86:GLN:NE2	2.49	0.45
2:B:93:ARG:HB2	2:B:94:PRO:HD2	1.98	0.45
2:B:118:MET:SD	2:B:131:ILE:HG21	2.57	0.45
1:C:411:PHE:HB3	1:C:412:PRO:CD	2.47	0.45
3:H:213:ASP:OD1	3:H:213:ASP:N	2.49	0.45
2:D:178:TYR:CG	2:D:179:ASP:N	2.85	0.45
3:E:133:VAL:O	3:E:134:CYS:SG	2.74	0.44
1:A:15[A]:ASN:ND2	13:A:4008:HOH:O	2.49	0.44

*Continued on next page...*

*Continued from previous page...*

Atom-1	Atom-2	Interatomic distance (Å)	Clash overlap (Å)
2:B:333:LEU:HA	2:B:340:VAL:HG13	2.00	0.44
1:C:258:PRO:HB2	1:C:288:TYR:CD2	2.52	0.44
3:E:194:TRP:CG	3:E:195:PRO:HA	2.53	0.44
3:H:12:VAL:HG21	3:H:86:LEU:CD1	2.48	0.44
2:B:42:GLU:OE1	2:B:42:GLU:N	2.51	0.44
1:C:2:ASN:OD1	1:C:2:ASN:N	2.50	0.44
2:D:93:ARG:HB2	2:D:94:PRO:HD2	1.98	0.44
1:A:132:LEU:N	1:A:132:LEU:HD12	2.33	0.43
1:A:235:TRP:CZ2	1:A:270:LEU:HD11	2.54	0.43
1:A:411:PHE:HB3	1:A:412:PRO:CD	2.49	0.43
2:B:340:VAL:O	2:B:341:LEU:HG	2.18	0.43
4:F:35:TRP:CZ3	4:F:88:CYS:HB3	2.54	0.43
1:A:285:MET:SD	2:B:320:ASN:HB3	2.59	0.43
3:E:67:LYS:NZ	3:E:85:SER:O	2.51	0.43
1:C:235:TRP:CZ2	1:C:270:LEU:HD11	2.53	0.43
1:C:278[A]:HIS:CD2	1:C:339:ALA:HB1	2.53	0.43
1:A:194:LEU:C	1:A:194:LEU:HD12	2.39	0.43
3:E:172:PHE:CD2	4:F:164:THR:HG23	2.54	0.43
2:B:158:ASP:HB3	2:B:187:MET:CE	2.49	0.43
1:A:114:ASN:OD1	1:A:115:VAL:N	2.52	0.43
2:D:340:VAL:HG13	2:D:341:LEU:N	2.34	0.42
3:E:178:SER:O	3:E:179:ASP:HB2	2.20	0.42
2:D:59:SER:OG	2:D:96:ASP:OD2	2.26	0.42
1:C:166:TYR:CE1	2:D:216:ARG:HD3	2.54	0.42
2:D:249:THR:HG22	2:D:309:ALA:HB3	2.02	0.42
4:F:136:LEU:N	4:F:136:LEU:HD12	2.35	0.41
2:B:134:LEU:HA	2:B:137:LYS:CD	2.51	0.41
2:B:236:ILE:HG21	2:B:238:TRP:CE2	2.55	0.41
3:E:125:PRO:HB2	3:E:148:VAL:HG13	2.03	0.41
4:L:157:ASN:ND2	13:L:4006:HOH:O	2.53	0.41
2:D:236:ILE:HG21	2:D:238:TRP:CE2	2.56	0.41
4:L:136:LEU:N	4:L:136:LEU:HD12	2.36	0.40
4:L:35:TRP:CZ3	4:L:88:CYS:HB3	2.56	0.40
3:E:97:VAL:HG12	3:E:98:ARG:N	2.37	0.40

All (1) symmetry-related close contacts are listed below. The label for Atom-2 includes the symmetry operator and encoded unit-cell translations to be applied.

Atom-1	Atom-2	Interatomic distance (Å)	Clash overlap (Å)
13:A:4052:HOH:O	13:C:4041:HOH:O[1_554]	2.12	0.08



## 5.3 Torsion angles ⓘ

### 5.3.1 Protein backbone ⓘ

In the following table, the Percentiles column shows the percent Ramachandran outliers of the chain as a percentile score with respect to all X-ray entries followed by that with respect to entries of similar resolution.

The Analysed column shows the number of residues for which the backbone conformation was analysed, and the total number of residues.

Mol	Chain	Analysed	Favoured	Allowed	Outliers	Percentiles	
1	A	458/457 (100%)	440 (96%)	17 (4%)	1 (0%)	47	79
1	C	453/457 (99%)	428 (94%)	24 (5%)	1 (0%)	47	79
2	B	464/472 (98%)	435 (94%)	26 (6%)	3 (1%)	25	60
2	D	468/472 (99%)	436 (93%)	30 (6%)	2 (0%)	34	69
3	E	212/221 (96%)	197 (93%)	13 (6%)	2 (1%)	17	51
3	H	212/221 (96%)	196 (92%)	15 (7%)	1 (0%)	29	64
4	F	212/214 (99%)	197 (93%)	15 (7%)	0	100	100
4	L	212/214 (99%)	204 (96%)	7 (3%)	1 (0%)	29	64
5	I	4/6 (67%)	4 (100%)	0	0	100	100
5	J	4/6 (67%)	4 (100%)	0	0	100	100
All	All	2699/2740 (98%)	2541 (94%)	147 (5%)	11 (0%)	34	69

All (11) Ramachandran outliers are listed below:

Mol	Chain	Res	Type
2	B	341	LEU
1	A	123	GLU
2	B	343	LEU
2	B	375	LEU
1	C	123	GLU
2	D	303[A]	ASN
2	D	303[B]	ASN
4	L	138	ASN
3	H	178	SER
3	E	150	GLY
3	E	133	VAL

### 5.3.2 Protein sidechains ⓘ

In the following table, the Percentiles column shows the percent sidechain outliers of the chain as a percentile score with respect to all X-ray entries followed by that with respect to entries of similar resolution.

The Analysed column shows the number of residues for which the sidechain conformation was analysed, and the total number of residues.

Mol	Chain	Analysed	Rotameric	Outliers	Percentiles	
1	A	368/364 (101%)	362 (98%)	6 (2%)	62	84
1	C	363/364 (100%)	359 (99%)	4 (1%)	73	89
2	B	413/417 (99%)	408 (99%)	5 (1%)	71	88
2	D	416/417 (100%)	416 (100%)	0	100	100
3	E	187/190 (98%)	187 (100%)	0	100	100
3	H	187/190 (98%)	186 (100%)	1 (0%)	88	95
4	F	188/188 (100%)	188 (100%)	0	100	100
4	L	188/188 (100%)	188 (100%)	0	100	100
5	I	4/4 (100%)	4 (100%)	0	100	100
5	J	4/4 (100%)	4 (100%)	0	100	100
All	All	2318/2326 (100%)	2302 (99%)	16 (1%)	84	93

All (16) residues with a non-rotameric sidechain are listed below:

Mol	Chain	Res	Type
1	A	23	LEU
1	A	166	TYR
1	A	190	TYR
1	A	267	VAL
1	A	288	TYR
1	A	335	ARG
2	B	132	GLN
2	B	140	THR
2	B	183	THR
2	B	215	ASN
2	B	342	GLN
1	C	23	LEU
1	C	166	TYR
1	C	252	GLU
1	C	288	TYR
3	H	106	MET

Some sidechains can be flipped to improve hydrogen bonding and reduce clashes. All (3) such sidechains are listed below:

Mol	Chain	Res	Type
1	A	338	HIS
2	B	450	ASN
1	C	197	GLN

### 5.3.3 RNA [i](#)

There are no RNA molecules in this entry.

## 5.4 Non-standard residues in protein, DNA, RNA chains [i](#)

There are no non-standard protein/DNA/RNA residues in this entry.

## 5.5 Carbohydrates [i](#)

12 monosaccharides are modelled in this entry.

In the following table, the Counts columns list the number of bonds (or angles) for which Mogul statistics could be retrieved, the number of bonds (or angles) that are observed in the model and the number of bonds (or angles) that are defined in the Chemical Component Dictionary. The Link column lists molecule types, if any, to which the group is linked. The Z score for a bond length (or angle) is the number of standard deviations the observed value is removed from the expected value. A bond length (or angle) with  $|Z| > 2$  is considered an outlier worth inspection. RMSZ is the root-mean-square of all Z scores of the bond lengths (or angles).

Mol	Type	Chain	Res	Link	Bond lengths			Bond angles		
					Counts	RMSZ	$\# Z  > 2$	Counts	RMSZ	$\# Z  > 2$
6	NAG	G	1	2,6	14,14,15	0.54	0	17,19,21	0.78	0
6	NAG	G	2	6	14,14,15	0.59	0	17,19,21	0.76	0
6	BMA	G	3	6	11,11,12	0.63	0	15,15,17	0.88	0
6	MAN	G	4	6	11,11,12	0.62	0	15,15,17	0.71	0
7	NAG	K	1	2,7	14,14,15	0.60	0	17,19,21	0.85	0
7	NAG	K	2	7	14,14,15	0.53	0	17,19,21	0.61	0
6	NAG	M	1	2,6	14,14,15	0.52	0	17,19,21	0.73	0
6	NAG	M	2	6	14,14,15	0.54	0	17,19,21	0.66	0
6	BMA	M	3	6	11,11,12	0.67	0	15,15,17	0.92	1 (6%)
6	MAN	M	4	6	11,11,12	0.66	0	15,15,17	0.71	0
7	NAG	N	1	2,7	14,14,15	0.60	0	17,19,21	0.90	0
7	NAG	N	2	7	14,14,15	0.53	0	17,19,21	0.63	0

In the following table, the Chirals column lists the number of chiral outliers, the number of chiral

centers analysed, the number of these observed in the model and the number defined in the Chemical Component Dictionary. Similar counts are reported in the Torsion and Rings columns. '-' means no outliers of that kind were identified.

Mol	Type	Chain	Res	Link	Chirals	Torsions	Rings
6	NAG	G	1	2,6	-	0/6/23/26	0/1/1/1
6	NAG	G	2	6	-	0/6/23/26	0/1/1/1
6	BMA	G	3	6	-	0/2/19/22	0/1/1/1
6	MAN	G	4	6	-	0/2/19/22	0/1/1/1
7	NAG	K	1	2,7	-	2/6/23/26	0/1/1/1
7	NAG	K	2	7	-	1/6/23/26	0/1/1/1
6	NAG	M	1	2,6	-	0/6/23/26	0/1/1/1
6	NAG	M	2	6	-	0/6/23/26	0/1/1/1
6	BMA	M	3	6	-	0/2/19/22	0/1/1/1
6	MAN	M	4	6	-	0/2/19/22	0/1/1/1
7	NAG	N	1	2,7	-	0/6/23/26	0/1/1/1
7	NAG	N	2	7	-	2/6/23/26	0/1/1/1

There are no bond length outliers.

All (1) bond angle outliers are listed below:

Mol	Chain	Res	Type	Atoms	Z	Observed(°)	Ideal(°)
6	M	3	BMA	C1-C2-C3	2.47	112.70	109.67

There are no chirality outliers.

All (5) torsion outliers are listed below:

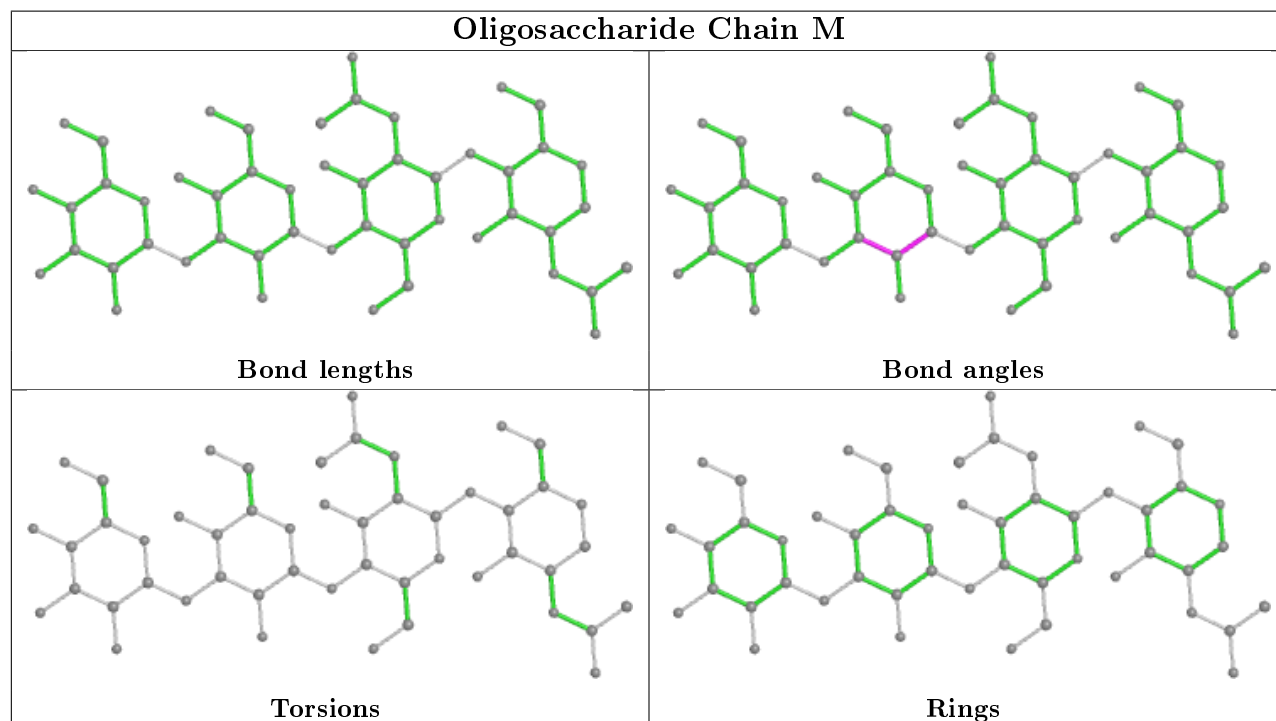
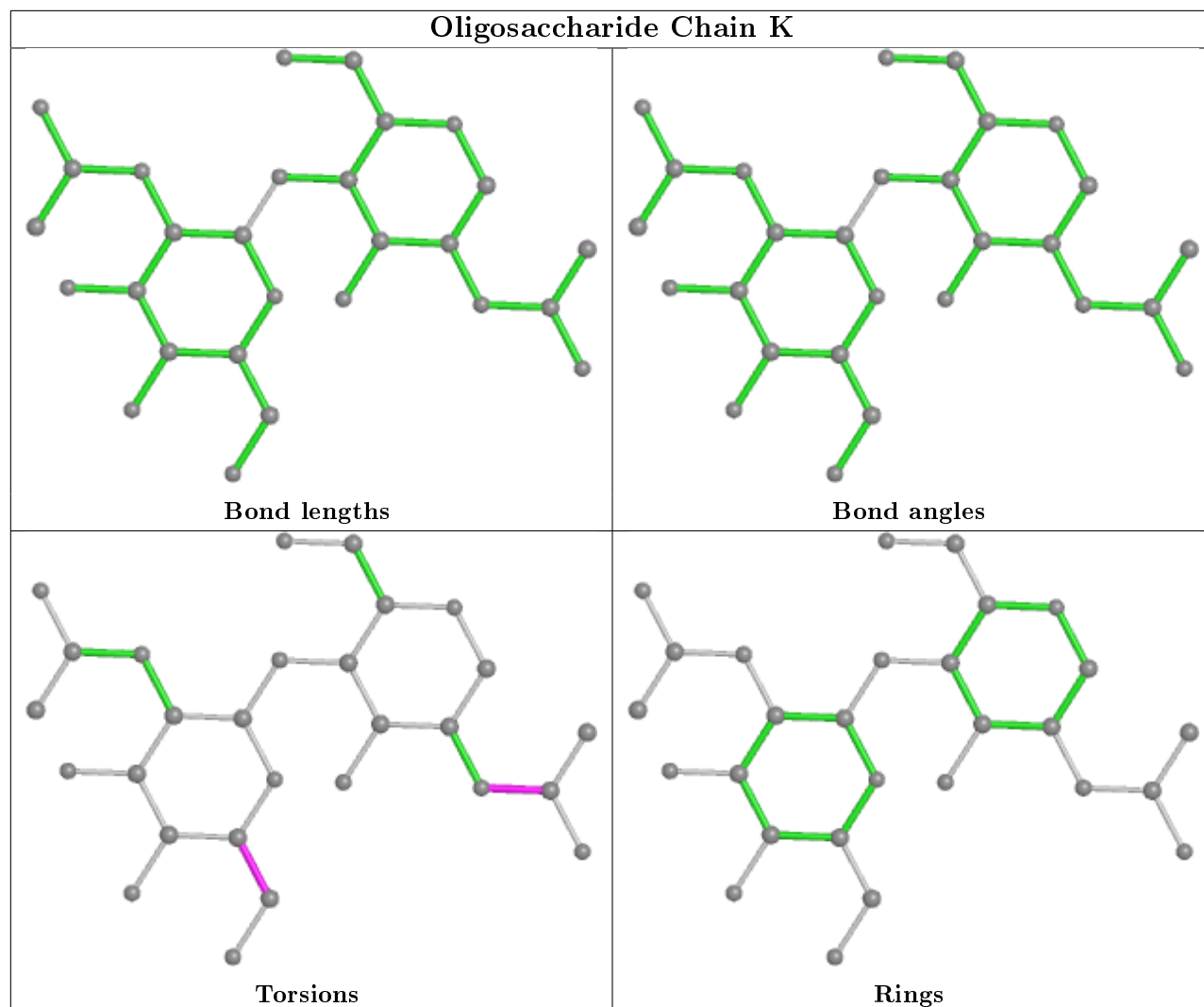
Mol	Chain	Res	Type	Atoms
7	N	2	NAG	C8-C7-N2-C2
7	N	2	NAG	O7-C7-N2-C2
7	K	2	NAG	O5-C5-C6-O6
7	K	1	NAG	C8-C7-N2-C2
7	K	1	NAG	O7-C7-N2-C2

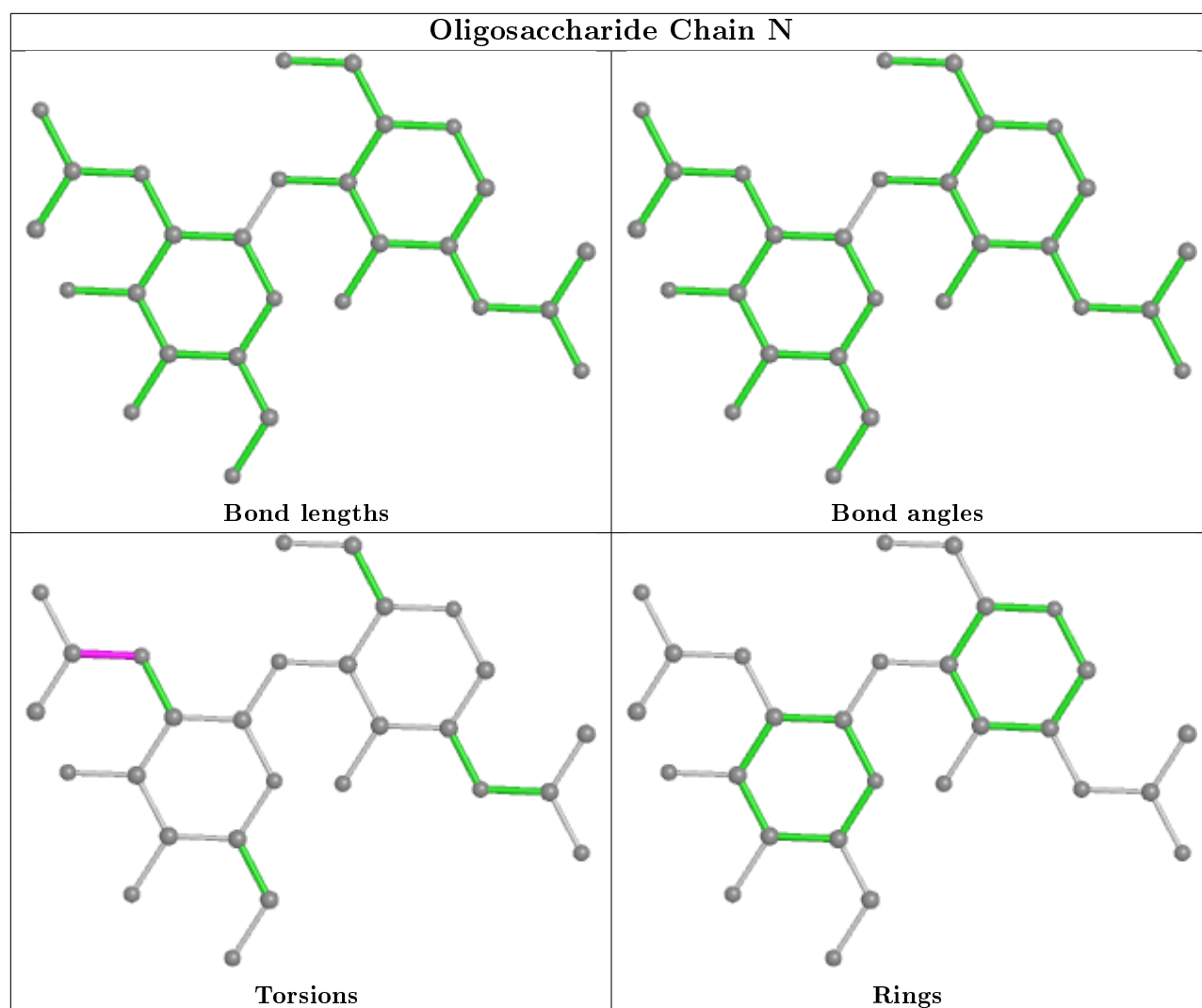
There are no ring outliers.

1 monomer is involved in 1 short contact:

Mol	Chain	Res	Type	Clashes	Symm-Clashes
7	N	2	NAG	1	0

The following is a two-dimensional graphical depiction of Mogul quality analysis of bond lengths, bond angles, torsion angles, and ring geometry for oligosaccharide.





## 5.6 Ligand geometry [i](#)

Of 22 ligands modelled in this entry, 15 are monoatomic - leaving 7 for Mogul analysis.

In the following table, the Counts columns list the number of bonds (or angles) for which Mogul statistics could be retrieved, the number of bonds (or angles) that are observed in the model and the number of bonds (or angles) that are defined in the Chemical Component Dictionary. The Link column lists molecule types, if any, to which the group is linked. The Z score for a bond length (or angle) is the number of standard deviations the observed value is removed from the expected value. A bond length (or angle) with  $|Z| > 2$  is considered an outlier worth inspection. RMSZ is the root-mean-square of all Z scores of the bond lengths (or angles).

Mol	Type	Chain	Res	Link	Bond lengths			Bond angles		
					Counts	RMSZ	$\# Z  > 2$	Counts	RMSZ	$\# Z  > 2$
11	NAG	B	3099	2	14,14,15	0.52	0	17,19,21	0.67	0
8	SO4	A	1458	-	4,4,4	0.14	0	6,6,6	0.05	0
11	NAG	D	3099	2	14,14,15	0.52	0	17,19,21	0.60	0
8	SO4	C	1454	-	4,4,4	0.14	0	6,6,6	0.07	0

Mol	Type	Chain	Res	Link	Bond lengths			Bond angles		
					Counts	RMSZ	# Z  > 2	Counts	RMSZ	# Z  > 2
8	SO4	L	1215	-	4,4,4	0.14	0	6,6,6	0.04	0
8	SO4	A	1457	-	4,4,4	0.15	0	6,6,6	0.04	0
8	SO4	A	1456	-	4,4,4	0.15	0	6,6,6	0.06	0

In the following table, the Chirals column lists the number of chiral outliers, the number of chiral centers analysed, the number of these observed in the model and the number defined in the Chemical Component Dictionary. Similar counts are reported in the Torsion and Rings columns. '-' means no outliers of that kind were identified.

Mol	Type	Chain	Res	Link	Chirals	Torsions	Rings
11	NAG	D	3099	2	-	0/6/23/26	0/1/1/1
11	NAG	B	3099	2	-	0/6/23/26	0/1/1/1

There are no bond length outliers.

There are no bond angle outliers.

There are no chirality outliers.

There are no torsion outliers.

There are no ring outliers.

2 monomers are involved in 2 short contacts:

Mol	Chain	Res	Type	Clashes	Symm-Clashes
11	D	3099	NAG	1	0
8	A	1456	SO4	1	0

## 5.7 Other polymers [i](#)

There are no such residues in this entry.

## 5.8 Polymer linkage issues [i](#)

There are no chain breaks in this entry.

## 6 Fit of model and data

### 6.1 Protein, DNA and RNA chains

In the following table, the column labelled ‘#RSRZ> 2’ contains the number (and percentage) of RSRZ outliers, followed by percent RSRZ outliers for the chain as percentile scores relative to all X-ray entries and entries of similar resolution. The OWAB column contains the minimum, median, 95<sup>th</sup> percentile and maximum values of the occupancy-weighted average B-factor per residue. The column labelled ‘Q< 0.9’ lists the number of (and percentage) of residues with an average occupancy less than 0.9.

Mol	Chain	Analysed	<RSRZ>	#RSRZ>2	OWAB(Å <sup>2</sup> )	Q<0.9
1	A	455/457 (99%)	0.32	3 (0%) 87 76	24, 43, 79, 140	0
1	C	453/457 (99%)	0.45	7 (1%) 73 57	38, 76, 118, 171	0
2	B	465/472 (98%)	0.79	62 (13%) 3 2	27, 81, 172, 213	1 (0%)
2	D	469/472 (99%)	1.05	87 (18%) 1 0	53, 113, 175, 222	2 (0%)
3	E	216/221 (97%)	1.46	59 (27%) 0 0	86, 137, 188, 213	0
3	H	216/221 (97%)	0.57	24 (11%) 5 3	51, 103, 172, 205	0
4	F	214/214 (100%)	1.59	73 (34%) 0 0	86, 140, 209, 281	1 (0%)
4	L	214/214 (100%)	0.55	14 (6%) 18 11	55, 95, 132, 234	0
5	I	6/6 (100%)	0.57	0 100 100	40, 58, 89, 90	0
5	J	6/6 (100%)	2.01	3 (50%) 0 0	43, 46, 86, 105	3 (50%)
All	All	2714/2740 (99%)	0.78	332 (12%) 4 2	24, 91, 175, 281	7 (0%)

All (332) RSRZ outliers are listed below:

Mol	Chain	Res	Type	RSRZ
4	F	193	THR	12.8
4	F	181	LEU	11.3
4	F	214	CYS	7.7
4	F	192	TYR	7.5
2	B	36	PRO	7.2
3	E	133	VAL	7.2
3	E	219	ARG	7.0
3	E	130	LEU	6.8
2	B	33	LEU	6.8
4	F	180	THR	6.6
4	F	179	LEU	6.5
2	B	10	VAL	6.4
3	E	142	VAL	6.3

*Continued on next page...*



*Continued from previous page...*

Mol	Chain	Res	Type	RSRZ
3	E	194	TRP	6.2
2	B	26	CYS	6.1
3	E	144	LEU	6.1
3	E	131	ALA	6.0
3	E	148	VAL	5.7
2	D	22	MET	5.6
4	F	130	ALA	5.5
2	B	48	ASN	5.5
2	D	44	LEU	5.5
2	D	375	LEU	5.4
3	E	132	PRO	5.3
2	B	44	LEU	5.3
3	E	200	THR	5.2
3	E	147	LEU	5.2
4	F	159	VAL	5.1
2	D	376	ASN	5.1
3	E	127	VAL	5.1
4	F	148	TRP	5.1
3	E	134	CYS	5.1
5	J	497	PRO	5.0
3	E	183	LEU	4.9
3	H	133	VAL	4.9
4	F	115	VAL	4.9
4	F	125	LEU	4.8
2	B	11	SER	4.8
2	D	36	PRO	4.8
3	E	176	LEU	4.8
4	F	133	VAL	4.7
2	D	72	LYS	4.7
4	F	186	TYR	4.7
2	D	9	GLY	4.7
3	E	216	ILE	4.6
3	E	128	TYR	4.6
3	H	142	VAL	4.6
4	L	214	CYS	4.6
2	B	8	ARG	4.6
4	F	135	PHE	4.5
4	F	136	LEU	4.4
4	F	212	ASN	4.4
2	D	49	CYS	4.4
4	F	147	LYS	4.4
3	E	212	VAL	4.3

*Continued on next page...*

*Continued from previous page...*

Mol	Chain	Res	Type	RSRZ
3	E	184	SER	4.3
4	F	155	ARG	4.3
3	E	20	LEU	4.3
1	A	455	LYS	4.2
2	D	17	LEU	4.2
4	F	150	ILE	4.2
2	B	49	CYS	4.1
4	F	104	LEU	4.1
3	E	145	GLY	4.1
2	D	54	ILE	4.0
4	F	134	CYS	4.0
2	D	21	PRO	4.0
2	B	383	LEU	4.0
4	F	105	GLU	4.0
2	D	374	CYS	4.0
2	D	181	LYS	3.9
2	D	58	VAL	3.9
4	F	132	VAL	3.9
4	F	205	ILE	3.9
3	H	189	VAL	3.8
3	H	201	CYS	3.8
2	D	102	ILE	3.8
2	D	355	VAL	3.8
2	D	90	LEU	3.8
2	D	8	ARG	3.7
2	D	57	PRO	3.7
3	E	117	VAL	3.7
2	D	61	ALA	3.6
2	D	368	LEU	3.6
3	E	218	PRO	3.6
4	F	108	ARG	3.6
4	F	206	VAL	3.6
3	H	165	LEU	3.6
2	D	31	LEU	3.6
3	H	144	LEU	3.6
3	E	189	VAL	3.5
2	B	24	ALA	3.5
2	D	433	CYS	3.5
3	E	181	TYR	3.5
4	F	178	THR	3.5
2	D	35	SER	3.5
3	E	129	PRO	3.4

*Continued on next page...*

*Continued from previous page...*

Mol	Chain	Res	Type	RSRZ
3	E	12	VAL	3.4
4	F	149	LYS	3.4
4	F	209	PHE	3.4
3	H	216	ILE	3.4
2	B	7	THR	3.4
3	E	217	GLU	3.4
2	D	27	SER	3.4
1	A	339	ALA	3.3
3	E	199	ILE	3.3
3	E	81	LEU	3.3
3	E	115	VAL	3.3
2	D	55	GLU	3.3
2	B	92	LEU	3.3
4	F	213	GLU	3.3
2	D	454	THR	3.3
4	F	182	THR	3.3
4	F	144	ILE	3.3
4	F	208	SER	3.2
3	H	187	VAL	3.2
4	F	146	VAL	3.2
2	B	77	SER	3.2
2	D	379	VAL	3.2
4	F	195	GLU	3.2
2	B	25	TRP	3.2
2	B	459	VAL	3.2
4	F	113	PRO	3.2
2	D	30	ALA	3.2
2	B	28	ASP	3.2
2	D	383	LEU	3.2
4	L	129	GLY	3.1
2	B	34	GLY	3.1
3	E	156	VAL	3.1
2	D	387	MET	3.1
3	H	143	THR	3.1
4	F	117	ILE	3.1
4	F	14	SER	3.1
2	D	381	PRO	3.1
4	F	158	GLY	3.0
4	F	174	SER	3.0
2	D	94	PRO	3.0
3	E	143	THR	3.0
2	D	455	PHE	3.0

*Continued on next page...*

*Continued from previous page...*

Mol	Chain	Res	Type	RSRZ
1	C	144	SER	3.0
2	B	38	CYS	3.0
3	E	149	LYS	3.0
3	E	126	SER	3.0
3	H	1	GLU	3.0
3	H	160	TRP	2.9
4	F	191	SER	2.9
2	B	104	VAL	2.9
4	F	107	LYS	2.9
2	B	338	SER	2.9
2	B	373	THR	2.9
2	D	46	LYS	2.9
2	B	375	LEU	2.9
2	B	456	GLU	2.9
2	D	59	SER	2.9
4	F	13	VAL	2.9
1	C	340	LEU	2.9
3	E	18	VAL	2.9
3	H	188	THR	2.9
4	L	104	LEU	2.9
4	F	126	THR	2.9
3	E	45	LEU	2.9
2	D	10	VAL	2.9
4	F	118	PHE	2.9
2	D	37	ARG	2.9
2	B	54	ILE	2.9
2	B	27	SER	2.9
1	C	1	LEU	2.9
3	E	116	THR	2.8
2	D	459	VAL	2.8
2	D	386	CYS	2.8
4	L	205	ILE	2.8
2	D	356	GLU	2.8
2	D	34	GLY	2.8
2	D	122	TYR	2.8
2	B	31	LEU	2.8
4	F	15	LEU	2.8
3	H	199	ILE	2.8
3	H	130	LEU	2.8
2	B	141	GLN	2.8
2	D	432	ASP	2.8
4	F	197	THR	2.8

*Continued on next page...*

*Continued from previous page...*

Mol	Chain	Res	Type	RSRZ
2	B	37	ARG	2.7
2	B	378	GLU	2.7
4	F	160	LEU	2.7
2	B	39	ASP	2.7
2	D	51	PRO	2.7
2	D	104	VAL	2.7
3	E	204	ALA	2.7
2	D	372	ALA	2.7
3	H	158	LEU	2.7
1	C	334	PRO	2.7
2	B	181	LYS	2.7
2	B	17	LEU	2.6
3	E	86	LEU	2.6
2	D	23	CYS	2.6
3	E	210	THR	2.6
2	D	26	CYS	2.6
2	B	380	ILE	2.6
2	D	92	LEU	2.6
4	F	100	GLY	2.6
2	D	50	ALA	2.6
3	E	14	PRO	2.6
2	B	64	LEU	2.6
4	F	207	LYS	2.6
2	B	45	LEU	2.6
2	D	369	SER	2.6
1	C	244	PHE	2.6
3	H	134	CYS	2.5
4	F	106	ILE	2.5
3	E	180	LEU	2.5
2	D	73	GLY	2.5
2	D	382	GLY	2.5
4	F	175	MET	2.5
2	D	425	LEU	2.5
4	L	169	LYS	2.5
2	D	95	ASP	2.5
3	E	172	PHE	2.5
2	B	22	MET	2.5
4	L	183	LYS	2.5
2	B	90	LEU	2.5
2	B	69	LEU	2.5
4	F	157	ASN	2.5
4	L	105	GLU	2.5

*Continued on next page...*

*Continued from previous page...*

Mol	Chain	Res	Type	RSRZ
4	F	75	ILE	2.5
2	D	97	SER	2.4
3	H	186	SER	2.4
2	D	450	ASN	2.4
2	B	458	GLY	2.4
3	E	146	CYS	2.4
2	D	241	ASP	2.4
2	D	389	LEU	2.4
2	B	404	ARG	2.4
4	F	196	ALA	2.4
2	B	98	LYS	2.4
3	E	141	SER	2.4
2	B	55	GLU	2.4
2	D	118	MET	2.4
2	D	48	ASN	2.4
3	E	209	SER	2.4
2	D	340	VAL	2.3
2	D	178	TYR	2.3
4	L	33	ILE	2.3
2	B	32	PRO	2.3
3	E	177	GLN	2.3
2	B	138	LEU	2.3
2	D	40	LEU	2.3
3	E	158	LEU	2.3
3	E	94	TYR	2.3
2	B	35	SER	2.3
2	B	379	VAL	2.3
2	D	399	ILE	2.3
4	F	161	ASN	2.3
4	L	212	ASN	2.3
2	D	25	TRP	2.3
2	D	67	ARG	2.3
2	D	470	GLN	2.3
4	F	194	CYS	2.3
4	F	83	PHE	2.3
3	E	155	PRO	2.3
3	E	19	LYS	2.3
2	D	437	CYS	2.3
2	D	457	CYS	2.3
2	D	243	SER	2.3
2	D	4	ILE	2.3
2	B	354	LYS	2.3

*Continued on next page...*

*Continued from previous page...*

Mol	Chain	Res	Type	RSRZ
2	B	446	HIS	2.2
2	D	346	ASP	2.2
2	B	30	ALA	2.2
2	B	29	GLU	2.2
2	B	466	TRP	2.2
2	B	450	ASN	2.2
2	D	96	ASP	2.2
2	B	4	ILE	2.2
4	F	177	SER	2.2
2	B	425	LEU	2.2
3	E	207	ALA	2.2
4	F	33	ILE	2.2
4	F	119	PRO	2.2
5	J	493	ARG	2.2
1	C	146	CYS	2.2
3	E	15	GLY	2.2
4	L	170	ASP	2.2
3	E	203	VAL	2.2
4	F	142	LYS	2.2
2	B	5	CYS	2.2
2	D	38	CYS	2.2
4	L	21	ILE	2.2
1	A	337	PRO	2.2
5	J	492	GLY	2.2
2	D	445	SER	2.2
4	F	204	PRO	2.2
4	L	171	SER	2.2
2	B	46	LYS	2.2
4	F	66	GLY	2.1
2	B	336	ASP	2.1
3	E	65	GLN	2.1
2	D	385	SER	2.1
3	H	217	GLU	2.1
4	F	11	MET	2.1
2	B	47	ASP	2.1
2	B	50	ALA	2.1
2	D	436	ALA	2.1
2	B	9	GLY	2.1
3	H	203	VAL	2.1
4	F	153	SER	2.1
4	F	102	THR	2.1
2	B	76	ASP	2.1

*Continued on next page...*

*Continued from previous page...*

Mol	Chain	Res	Type	RSRZ
4	F	114	THR	2.1
4	F	151	ASP	2.1
3	H	211	LYS	2.1
3	H	183	LEU	2.1
3	H	200	THR	2.1
4	F	129	GLY	2.1
4	L	137	ASN	2.1
2	D	469	SER	2.1
2	D	365	GLU	2.1
3	E	48	ILE	2.1
2	D	431	PHE	2.1
2	D	88	ILE	2.0
4	F	137	ASN	2.0
4	L	181	LEU	2.0
2	D	41	LYS	2.0
3	H	150	GLY	2.0
4	F	173	TYR	2.0
1	C	336	GLY	2.0
2	D	193	VAL	2.0
2	D	380	ILE	2.0
4	F	131	SER	2.0
3	E	151	TYR	2.0
3	H	115	VAL	2.0
2	D	173	LEU	2.0
3	E	153	PRO	2.0

## 6.2 Non-standard residues in protein, DNA, RNA chains ⓘ

There are no non-standard protein/DNA/RNA residues in this entry.

## 6.3 Carbohydrates ⓘ

In the following table, the Atoms column lists the number of modelled atoms in the group and the number defined in the chemical component dictionary. The B-factors column lists the minimum, median, 95<sup>th</sup> percentile and maximum values of B factors of atoms in the group. The column labelled 'Q< 0.9' lists the number of atoms with occupancy less than 0.9.

Mol	Type	Chain	Res	Atoms	RSCC	RSR	B-factors(Å <sup>2</sup> )	Q<0.9
6	BMA	M	3	11/12	0.78	0.24	151,175,210,210	0
6	BMA	G	3	11/12	0.81	0.15	98,137,174,181	0
7	NAG	N	2	14/15	0.81	0.52	148,177,206,217	0

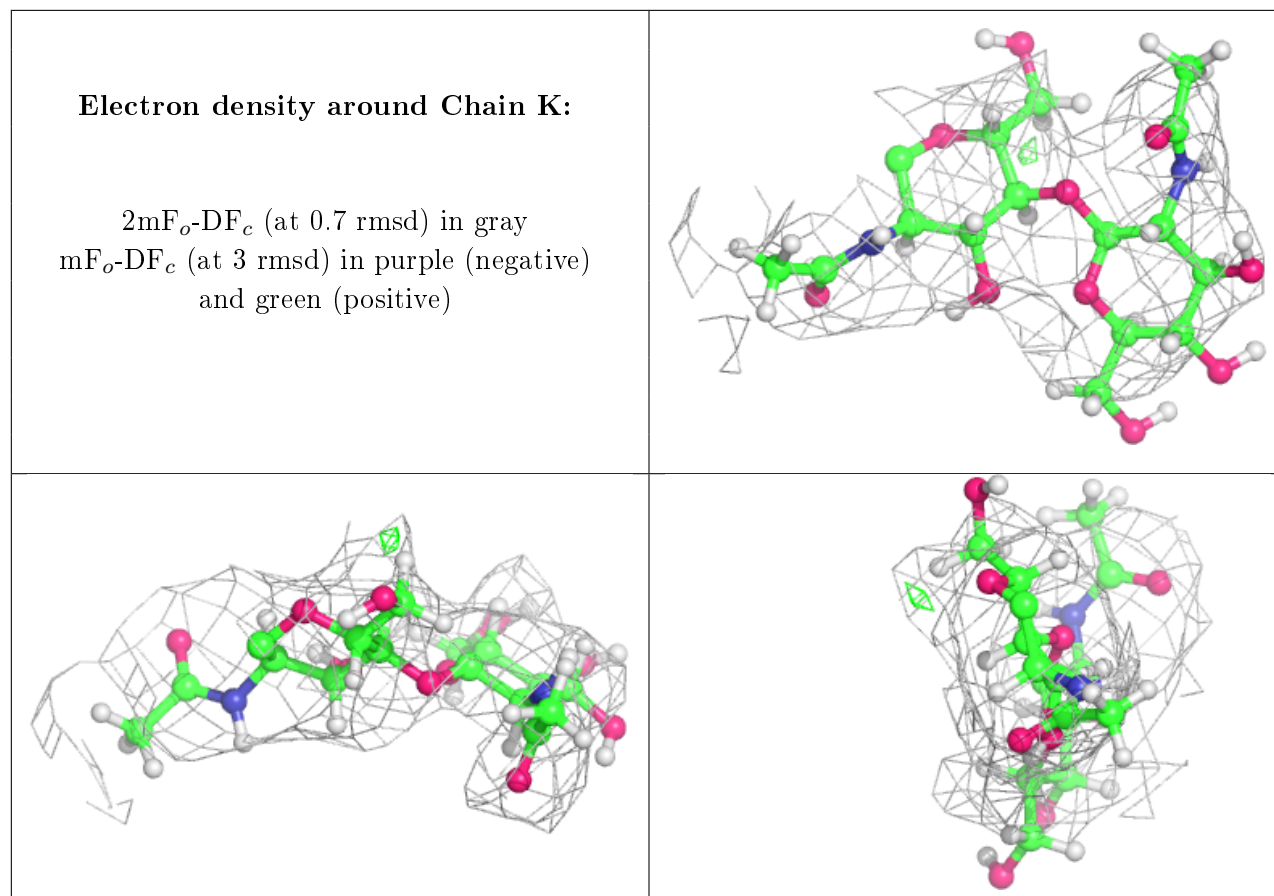
*Continued on next page...*



*Continued from previous page...*

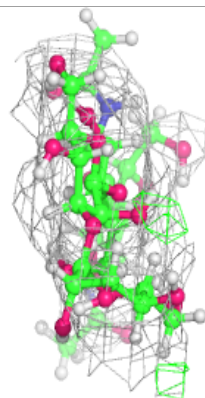
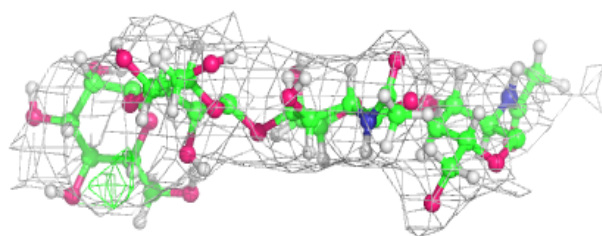
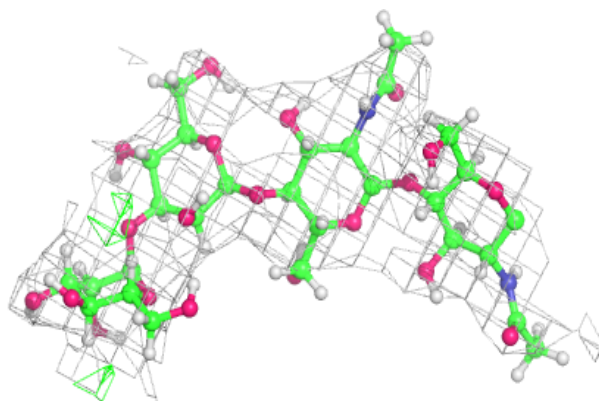
Mol	Type	Chain	Res	Atoms	RSCC	RSR	B-factors( $\text{\AA}^2$ )	Q<0.9
7	NAG	N	1	14/15	0.83	0.39	120,157,185,191	0
6	MAN	G	4	11/12	0.88	0.23	112,141,170,172	0
6	MAN	M	4	11/12	0.88	0.37	164,181,216,218	0
7	NAG	K	2	14/15	0.89	0.34	116,166,203,209	0
6	NAG	M	2	14/15	0.90	0.21	86,119,155,164	0
7	NAG	K	1	14/15	0.90	0.24	102,132,164,164	0
6	NAG	G	2	14/15	0.92	0.15	66,92,116,124	0
6	NAG	M	1	14/15	0.95	0.18	65,88,111,111	0
6	NAG	G	1	14/15	0.97	0.17	28,45,64,85	0

The following is a graphical depiction of the model fit to experimental electron density for oligosaccharide. Each fit is shown from different orientation to approximate a three-dimensional view.

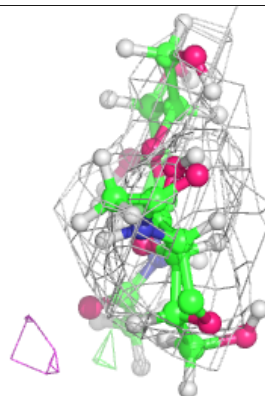
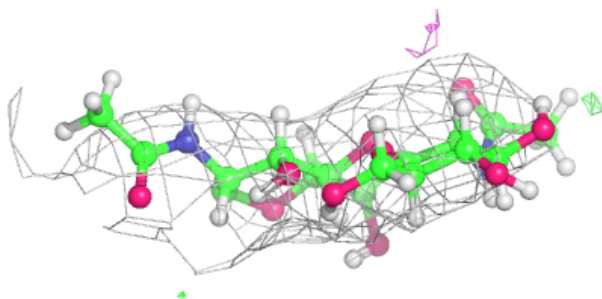
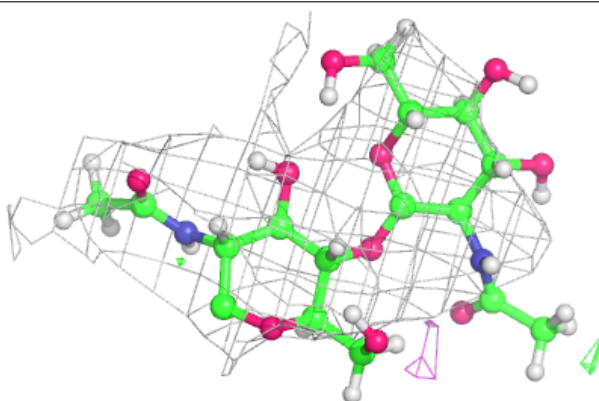


**Electron density around Chain M:**

$2mF_o-DF_c$  (at 0.7 rmsd) in gray  
 $mF_o-DF_c$  (at 3 rmsd) in purple (negative)  
and green (positive)

**Electron density around Chain N:**

$2mF_o-DF_c$  (at 0.7 rmsd) in gray  
 $mF_o-DF_c$  (at 3 rmsd) in purple (negative)  
and green (positive)



## 6.4 Ligands ⓘ

In the following table, the Atoms column lists the number of modelled atoms in the group and the number defined in the chemical component dictionary. The B-factors column lists the minimum, median, 95<sup>th</sup> percentile and maximum values of B factors of atoms in the group. The column labelled 'Q< 0.9' lists the number of atoms with occupancy less than 0.9.

Mol	Type	Chain	Res	Atoms	RSCC	RSR	B-factors(Å <sup>2</sup> )	Q<0.9
11	NAG	D	3099	14/15	0.75	0.46	130,164,195,198	0
8	SO4	C	1454	5/5	0.80	0.28	137,139,143,148	0
8	SO4	A	1458	5/5	0.87	0.40	135,143,150,167	0
10	MN	D	2002	1/1	0.88	0.27	205,205,205,205	0
11	NAG	B	3099	14/15	0.90	0.36	114,153,183,188	0
9	CA	C	2004	1/1	0.91	0.10	111,111,111,111	0
8	SO4	L	1215	5/5	0.92	0.22	134,136,137,142	0
12	CL	C	1455	1/1	0.92	0.31	72,72,72,72	0
8	SO4	A	1456	5/5	0.93	0.17	75,98,98,117	0
8	SO4	A	1457	5/5	0.94	0.26	97,98,113,136	0
10	MN	D	2001	1/1	0.95	0.22	101,101,101,101	0
9	CA	C	2005	1/1	0.97	0.08	90,90,90,90	0
9	CA	C	2006	1/1	0.97	0.13	69,69,69,69	0
10	MN	D	2003	1/1	0.98	0.17	104,104,104,104	0
9	CA	A	2004	1/1	0.98	0.12	49,49,49,49	0
10	MN	B	2002	1/1	0.99	0.21	65,65,65,65	0
9	CA	A	2006	1/1	0.99	0.18	38,38,38,38	0
10	MN	B	2003	1/1	0.99	0.23	51,51,51,51	0
9	CA	C	2007	1/1	0.99	0.15	65,65,65,65	0
9	CA	A	2005	1/1	0.99	0.15	40,40,40,40	0
9	CA	A	2007	1/1	1.00	0.21	39,39,39,39	0
10	MN	B	2001	1/1	1.00	0.24	42,42,42,42	0

## 6.5 Other polymers ⓘ

There are no such residues in this entry.