



# Full wwPDB X-ray Structure Validation Report ⓘ

May 13, 2020 – 12:58 am BST

PDB ID : 5ZHE  
Title : STRUCTURE OF E. COLI UNDECAPRENYL DIPHOSPHATE SYNTHASE IN COMPLEX WITH BPH-981  
Authors : Gao, J.; Liu, W.D.; Zheng, Y.Y.; Ko, T.P.; Chen, C.C.; Guo, R.T.  
Deposited on : 2018-03-13  
Resolution : 2.18 Å(reported)

This is a Full wwPDB X-ray Structure Validation Report for a publicly released PDB entry.

We welcome your comments at [validation@mail.wwpdb.org](mailto:validation@mail.wwpdb.org)

A user guide is available at

<https://www.wwpdb.org/validation/2017/XrayValidationReportHelp>

with specific help available everywhere you see the ⓘ symbol.

---

The following versions of software and data (see [references ⓘ](#)) were used in the production of this report:

MolProbity : 4.02b-467  
Mogul : 1.8.5 (274361), CSD as541be (2020)  
Xtriage (Phenix) : 1.13  
EDS : 2.11  
buster-report : 1.1.7 (2018)  
Percentile statistics : 20191225.v01 (using entries in the PDB archive December 25th 2019)  
Refmac : 5.8.0158  
CCP4 : 7.0.044 (Gargrove)  
Ideal geometry (proteins) : Engh & Huber (2001)  
Ideal geometry (DNA, RNA) : Parkinson et al. (1996)  
Validation Pipeline (wwPDB-VP) : 2.11

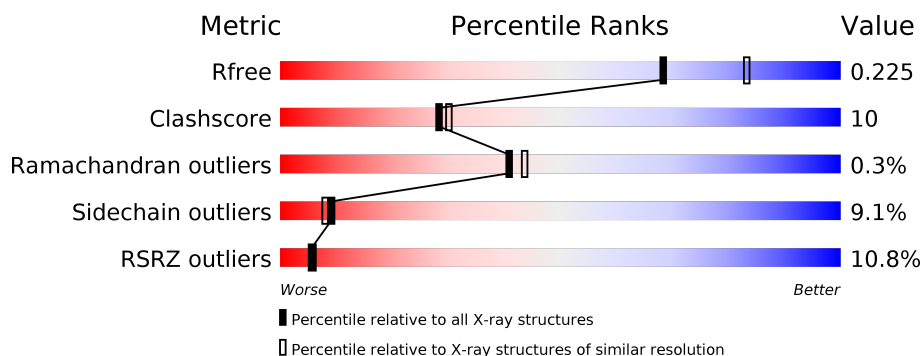
# 1 Overall quality at a glance

The following experimental techniques were used to determine the structure:

## *X-RAY DIFFRACTION*

The reported resolution of this entry is 2.18 Å.

Percentile scores (ranging between 0-100) for global validation metrics of the entry are shown in the following graphic. The table shows the number of entries on which the scores are based.



Metric	Whole archive (#Entries)	Similar resolution (#Entries, resolution range(Å))
$R_{free}$	130704	6864 (2.20-2.16)
Clashscore	141614	7689 (2.20-2.16)
Ramachandran outliers	138981	7564 (2.20-2.16)
Sidechain outliers	138945	7564 (2.20-2.16)
RSRZ outliers	127900	6738 (2.20-2.16)

The table below summarises the geometric issues observed across the polymeric chains and their fit to the electron density. The red, orange, yellow and green segments on the lower bar indicate the fraction of residues that contain outliers for  $\geq 3$ , 2, 1 and 0 types of geometric quality criteria respectively. A grey segment represents the fraction of residues that are not modelled. The numeric value for each fraction is indicated below the corresponding segment, with a dot representing fractions  $\leq 5\%$ . The upper red bar (where present) indicates the fraction of residues that have poor fit to the electron density. The numeric value is given above the bar.

Mol	Chain	Length	Quality of chain
1	A	253	<div> <div>10%</div> <div>67%</div> <div>13%</div> <div>•</div> <div>19%</div> </div>
1	B	253	<div> <div>8%</div> <div>63%</div> <div>13%</div> <div>•</div> <div>21%</div> </div>

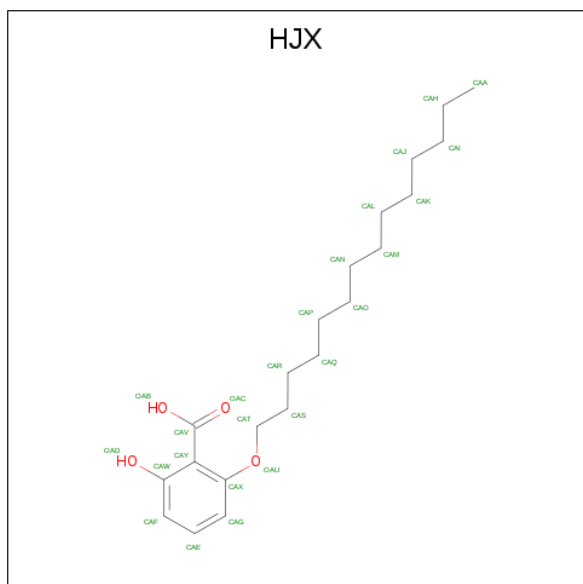


In the tables below, the ZeroOcc column contains the number of atoms modelled with zero occupancy, the AltConf column contains the number of residues with at least one atom in alternate conformation and the Trace column contains the number of residues modelled with at most 2 atoms.

- Molecule 1 is a protein called Ditrans, polycis-undecaprenyl-diphosphate synthase ((2E,6E)-farnesyl-diphosphate specific).

Mol	Chain	Residues	Atoms					ZeroOcc	AltConf	Trace
1	A	206	Total 1631	C 1021	N 309	O 296	S 5	0	0	0
1	B	200	Total 1592	C 1000	N 298	O 289	S 5	0	0	0

- Molecule 2 is 2-hydroxy-6-(tetradecyloxy)benzoic acid (three-letter code: HJX) (formula:  $\text{C}_{21}\text{H}_{34}\text{O}_4$ ).



Mol	Chain	Residues	Atoms			ZeroOcc	AltConf
2	B	1	Total	C	O	0	0
			25	21	4		

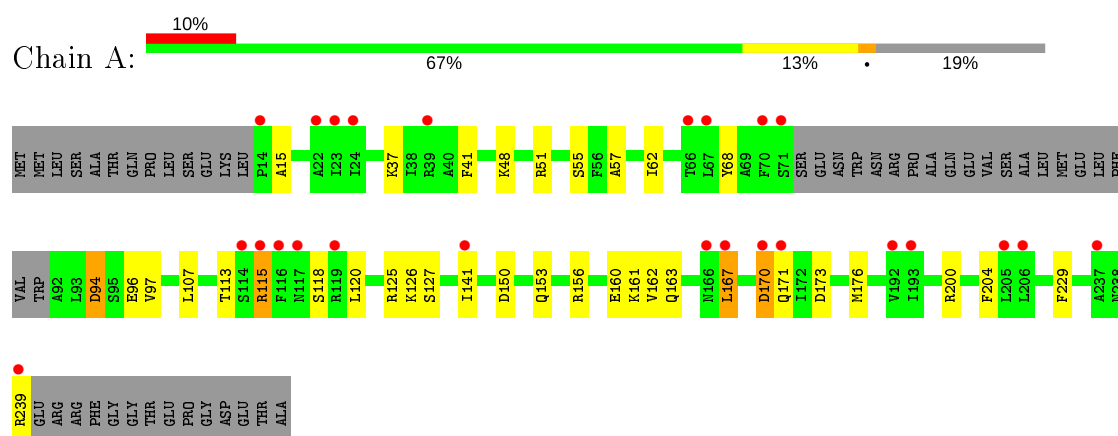
- Molecule 3 is water.

Mol	Chain	Residues	Atoms		ZeroOcc	AltConf
3	A	59	Total 59	O 59	0	0
3	B	71	Total 71	O 71	0	0

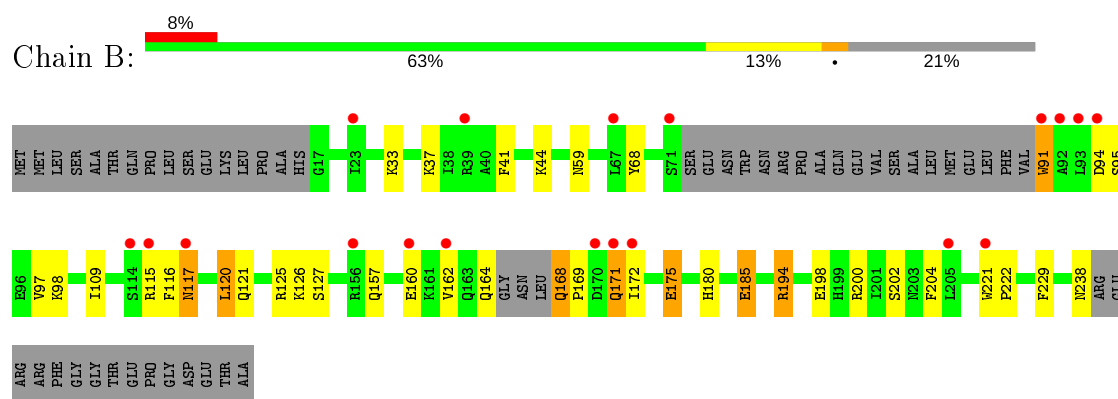
### 3 Residue-property plots [i](#)

These plots are drawn for all protein, RNA and DNA chains in the entry. The first graphic for a chain summarises the proportions of the various outlier classes displayed in the second graphic. The second graphic shows the sequence view annotated by issues in geometry and electron density. Residues are color-coded according to the number of geometric quality criteria for which they contain at least one outlier: green = 0, yellow = 1, orange = 2 and red = 3 or more. A red dot above a residue indicates a poor fit to the electron density ( $RSRZ > 2$ ). Stretches of 2 or more consecutive residues without any outlier are shown as a green connector. Residues present in the sample, but not in the model, are shown in grey.

- Molecule 1: Ditrans, polycis-undecaprenyl-diphosphate synthase ((2E,6E)-farnesyl-diphosphate specific)



- Molecule 1: Ditrans, polycis-undecaprenyl-diphosphate synthase ((2E,6E)-farnesyl-diphosphate specific)



## 4 Data and refinement statistics

Property	Value	Source
Space group	P 21 21 21	Depositor
Cell constants a, b, c, $\alpha$ , $\beta$ , $\gamma$	63.71Å 68.45Å 109.25Å 90.00° 90.00° 90.00°	Depositor
Resolution (Å)	25.00 – 2.18 24.94 – 2.18	Depositor EDS
% Data completeness (in resolution range)	99.3 (25.00-2.18) 97.3 (24.94-2.18)	Depositor EDS
$R_{merge}$	0.04	Depositor
$R_{sym}$	(Not available)	Depositor
$\langle I/\sigma(I) \rangle$ <sup>1</sup>	3.45 (at 2.17Å)	Xtriage
Refinement program	REFMAC 5.8.0189	Depositor
R, $R_{free}$	0.203 , 0.263 0.216 , 0.225	Depositor DCC
$R_{free}$ test set	1208 reflections (4.85%)	wwPDB-VP
Wilson B-factor (Å <sup>2</sup> )	41.6	Xtriage
Anisotropy	0.208	Xtriage
Bulk solvent $k_{sol}$ (e/Å <sup>3</sup> ), $B_{sol}$ (Å <sup>2</sup> )	0.33 , 45.3	EDS
L-test for twinning <sup>2</sup>	$\langle  L  \rangle = 0.49$ , $\langle L^2 \rangle = 0.32$	Xtriage
Estimated twinning fraction	No twinning to report.	Xtriage
$F_o, F_c$ correlation	0.94	EDS
Total number of atoms	3378	wwPDB-VP
Average B, all atoms (Å <sup>2</sup> )	53.0	wwPDB-VP

Xtriage's analysis on translational NCS is as follows: *The largest off-origin peak in the Patterson function is 4.96% of the height of the origin peak. No significant pseudotranslation is detected.*

<sup>1</sup>Intensities estimated from amplitudes.

<sup>2</sup>Theoretical values of  $\langle |L| \rangle$ ,  $\langle L^2 \rangle$  for acentric reflections are 0.5, 0.333 respectively for untwinned datasets, and 0.375, 0.2 for perfectly twinned datasets.

## 5 Model quality

### 5.1 Standard geometry

Bond lengths and bond angles in the following residue types are not validated in this section: HJX

The Z score for a bond length (or angle) is the number of standard deviations the observed value is removed from the expected value. A bond length (or angle) with  $|Z| > 5$  is considered an outlier worth inspection. RMSZ is the root-mean-square of all Z scores of the bond lengths (or angles).

Mol	Chain	Bond lengths		Bond angles	
		RMSZ	# Z  >5	RMSZ	# Z  >5
1	A	0.76	0/1662	0.84	0/2241
1	B	0.88	0/1622	0.87	0/2187
All	All	0.82	0/3284	0.85	0/4428

There are no bond length outliers.

There are no bond angle outliers.

There are no chirality outliers.

There are no planarity outliers.

### 5.2 Too-close contacts

In the following table, the Non-H and H(model) columns list the number of non-hydrogen atoms and hydrogen atoms in the chain respectively. The H(added) column lists the number of hydrogen atoms added and optimized by MolProbity. The Clashes column lists the number of clashes within the asymmetric unit, whereas Symm-Clashes lists symmetry related clashes.

Mol	Chain	Non-H	H(model)	H(added)	Clashes	Symm-Clashes
1	A	1631	0	1604	38	0
1	B	1592	0	1560	33	0
2	B	25	0	0	0	0
3	A	59	0	0	3	0
3	B	71	0	0	3	0
All	All	3378	0	3164	63	0

The all-atom clashscore is defined as the number of clashes found per 1000 atoms (including hydrogen atoms). The all-atom clashscore for this structure is 10.

All (63) close contacts within the same asymmetric unit are listed below, sorted by their clash magnitude.

Atom-1	Atom-2	Interatomic distance (Å)	Clash overlap (Å)
1:A:156:ARG:CG	1:B:172:ILE:HD11	1.49	1.42
1:A:156:ARG:CG	1:B:172:ILE:CD1	2.36	1.03
1:A:156:ARG:HG3	1:B:172:ILE:HD11	1.41	1.03
1:A:156:ARG:HG2	1:B:172:ILE:HD11	1.01	1.01
1:A:156:ARG:HG3	1:B:172:ILE:CD1	1.94	0.98
1:A:115:ARG:CB	1:A:115:ARG:HH11	1.89	0.86
1:A:156:ARG:HG2	1:B:172:ILE:CD1	1.97	0.85
1:B:37:LYS:HD2	1:B:41:PHE:CD2	2.18	0.79
1:A:200:ARG:CD	3:B:427:HOH:O	2.32	0.77
1:A:57:ALA:HA	1:A:62:ILE:HD12	1.68	0.75
1:B:117:ASN:N	1:B:117:ASN:OD1	2.20	0.74
1:B:172:ILE:O	1:B:172:ILE:HD12	1.89	0.73
1:A:115:ARG:HH11	1:A:115:ARG:CA	2.04	0.70
1:A:200:ARG:HD3	3:B:427:HOH:O	1.92	0.70
1:B:168:GLN:N	1:B:168:GLN:HE21	1.90	0.70
1:B:168:GLN:N	1:B:169:PRO:HD3	2.09	0.68
1:A:171:GLN:NE2	3:A:301:HOH:O	2.24	0.63
1:A:162:VAL:HG23	1:A:167:LEU:HD23	1.80	0.63
1:A:115:ARG:HA	1:A:115:ARG:NH1	2.14	0.62
1:A:200:ARG:HD2	3:B:427:HOH:O	1.97	0.61
1:B:185:GLU:CD	1:B:185:GLU:H	2.03	0.60
1:A:162:VAL:CG2	1:A:167:LEU:HD23	2.31	0.60
1:B:116:PHE:O	1:B:121:GLN:NE2	2.31	0.59
1:A:107:LEU:HD11	1:A:141:ILE:HD12	1.84	0.59
1:A:162:VAL:HG23	1:A:167:LEU:CD2	2.33	0.59
1:A:115:ARG:CG	1:A:115:ARG:HH11	2.16	0.58
1:B:68:TYR:HB2	1:B:204:PHE:CE1	2.38	0.58
1:A:37:LYS:HD2	1:A:41:PHE:CD2	2.40	0.57
1:A:170:ASP:OD1	1:A:170:ASP:N	2.38	0.56
1:A:115:ARG:HB2	1:A:115:ARG:HH11	1.70	0.55
1:A:162:VAL:CG1	1:B:162:VAL:HG12	2.37	0.54
1:B:164:GLN:HA	1:B:164:GLN:OE1	2.06	0.54
1:B:175:GLU:O	1:B:175:GLU:HG3	2.06	0.54
1:A:115:ARG:HA	1:A:115:ARG:HH11	1.72	0.53
1:B:194:ARG:NH1	1:B:202:SER:OG	2.41	0.53
1:A:150:ASP:O	1:A:153:GLN:HG3	2.08	0.53
1:B:171:GLN:HA	1:B:171:GLN:OE1	2.10	0.52
1:A:94:ASP:OD2	1:A:97:VAL:HG23	2.10	0.51
1:B:157:GLN:OE1	1:B:180:HIS:ND1	2.44	0.50
1:A:115:ARG:NH1	1:A:115:ARG:CG	2.73	0.48
1:B:168:GLN:N	1:B:169:PRO:CD	2.75	0.48
1:B:116:PHE:CD2	1:B:120:LEU:HD13	2.49	0.47

Continued on next page...



Continued from previous page...

Atom-1	Atom-2	Interatomic distance (Å)	Clash overlap (Å)
1:A:162:VAL:HG12	1:B:162:VAL:HG12	1.97	0.47
1:A:68:TYR:HB2	1:A:204:PHE:CE1	2.50	0.47
1:A:51:ARG:NH2	1:A:96:GLU:HG3	2.30	0.47
1:A:51:ARG:HH22	1:A:96:GLU:HG3	1.80	0.46
1:B:198:GLU:HG2	1:B:200:ARG:HG2	1.97	0.46
1:A:97:VAL:HG21	1:A:127:SER:OG	2.15	0.45
1:B:198:GLU:HG2	1:B:200:ARG:CG	2.46	0.45
1:A:160:GLU:OE1	1:A:160:GLU:HA	2.15	0.45
1:B:91:TRP:CG	1:B:91:TRP:O	2.69	0.45
1:A:163:GLN:NE2	3:A:304:HOH:O	2.50	0.45
1:B:109:ILE:N	1:B:109:ILE:HD12	2.32	0.45
1:A:125:ARG:NH2	1:A:126:LYS:HD2	2.33	0.44
1:B:37:LYS:HD2	1:B:41:PHE:CE2	2.50	0.44
1:A:120:LEU:HD12	1:A:120:LEU:O	2.19	0.43
1:B:194:ARG:NH2	1:B:198:GLU:HB3	2.33	0.42
1:A:173:ASP:O	1:A:176:MET:HB3	2.19	0.42
1:B:91:TRP:HE3	1:B:120:LEU:HD21	1.85	0.42
1:A:15:ALA:HB3	3:A:351:HOH:O	2.19	0.42
1:B:97:VAL:HG21	1:B:127:SER:OG	2.20	0.41
1:B:37:LYS:HD2	1:B:41:PHE:CG	2.56	0.41
1:B:221:TRP:HB3	1:B:222:PRO:HD3	2.02	0.41

There are no symmetry-related clashes.

## 5.3 Torsion angles ⓘ

### 5.3.1 Protein backbone ⓘ

In the following table, the Percentiles column shows the percent Ramachandran outliers of the chain as a percentile score with respect to all X-ray entries followed by that with respect to entries of similar resolution.

The Analysed column shows the number of residues for which the backbone conformation was analysed, and the total number of residues.

Mol	Chain	Analysed	Favoured	Allowed	Outliers	Percentiles	
1	A	202/253 (80%)	193 (96%)	8 (4%)	1 (0%)	29	28
1	B	194/253 (77%)	187 (96%)	7 (4%)	0	100	100
All	All	396/506 (78%)	380 (96%)	15 (4%)	1 (0%)	41	43

All (1) Ramachandran outliers are listed below:

Mol	Chain	Res	Type
1	A	118	SER

### 5.3.2 Protein sidechains ⓘ

In the following table, the Percentiles column shows the percent sidechain outliers of the chain as a percentile score with respect to all X-ray entries followed by that with respect to entries of similar resolution.

The Analysed column shows the number of residues for which the sidechain conformation was analysed, and the total number of residues.

Mol	Chain	Analysed	Rotameric	Outliers	Percentiles	
1	A	166/206 (81%)	156 (94%)	10 (6%)	19	20
1	B	162/206 (79%)	142 (88%)	20 (12%)	4	3
All	All	328/412 (80%)	298 (91%)	30 (9%)	9	8

All (30) residues with a non-rotameric sidechain are listed below:

Mol	Chain	Res	Type
1	A	48	LYS
1	A	55	SER
1	A	94	ASP
1	A	113	THR
1	A	115	ARG
1	A	161	LYS
1	A	167	LEU
1	A	170	ASP
1	A	229	PHE
1	A	239	ARG
1	B	33	LYS
1	B	44	LYS
1	B	59	ASN
1	B	91	TRP
1	B	94	ASP
1	B	95	SER
1	B	98	LYS
1	B	115	ARG
1	B	117	ASN
1	B	120	LEU
1	B	125	ARG
1	B	126	LYS

*Continued on next page...*

*Continued from previous page...*

Mol	Chain	Res	Type
1	B	160	GLU
1	B	168	GLN
1	B	171	GLN
1	B	175	GLU
1	B	185	GLU
1	B	194	ARG
1	B	229	PHE
1	B	238	ASN

Some sidechains can be flipped to improve hydrogen bonding and reduce clashes. All (1) such sidechains are listed below:

Mol	Chain	Res	Type
1	A	184	HIS

### 5.3.3 RNA [i](#)

There are no RNA molecules in this entry.

## 5.4 Non-standard residues in protein, DNA, RNA chains [i](#)

There are no non-standard protein/DNA/RNA residues in this entry.

## 5.5 Carbohydrates [i](#)

There are no carbohydrates in this entry.

## 5.6 Ligand geometry [i](#)

1 ligand is modelled in this entry.

In the following table, the Counts columns list the number of bonds (or angles) for which Mogul statistics could be retrieved, the number of bonds (or angles) that are observed in the model and the number of bonds (or angles) that are defined in the Chemical Component Dictionary. The Link column lists molecule types, if any, to which the group is linked. The Z score for a bond length (or angle) is the number of standard deviations the observed value is removed from the expected value. A bond length (or angle) with  $|Z| > 2$  is considered an outlier worth inspection. RMSZ is the root-mean-square of all Z scores of the bond lengths (or angles).

Mol	Type	Chain	Res	Link	Bond lengths			Bond angles		
					Counts	RMSZ	# Z  > 2	Counts	RMSZ	# Z  > 2
2	HJX	B	301	-	23,25,25	2.41	4 (17%)	24,29,29	1.56	2 (8%)

In the following table, the Chirals column lists the number of chiral outliers, the number of chiral centers analysed, the number of these observed in the model and the number defined in the Chemical Component Dictionary. Similar counts are reported in the Torsion and Rings columns. '-' means no outliers of that kind were identified.

Mol	Type	Chain	Res	Link	Chirals	Torsions	Rings
2	HJX	B	301	-	-	9/15/19/19	0/1/1/1

All (4) bond length outliers are listed below:

Mol	Chain	Res	Type	Atoms	Z	Observed(Å)	Ideal(Å)
2	B	301	HJX	CAY-CAV	10.70	1.57	1.47
2	B	301	HJX	OAD-CAW	2.54	1.41	1.36
2	B	301	HJX	OAU-CAX	2.11	1.41	1.37
2	B	301	HJX	CAY-CAX	2.07	1.43	1.40

All (2) bond angle outliers are listed below:

Mol	Chain	Res	Type	Atoms	Z	Observed(°)	Ideal(°)
2	B	301	HJX	OAU-CAX-CAY	5.51	124.47	115.52
2	B	301	HJX	OAU-CAX-CAG	-4.28	114.71	123.97

There are no chirality outliers.

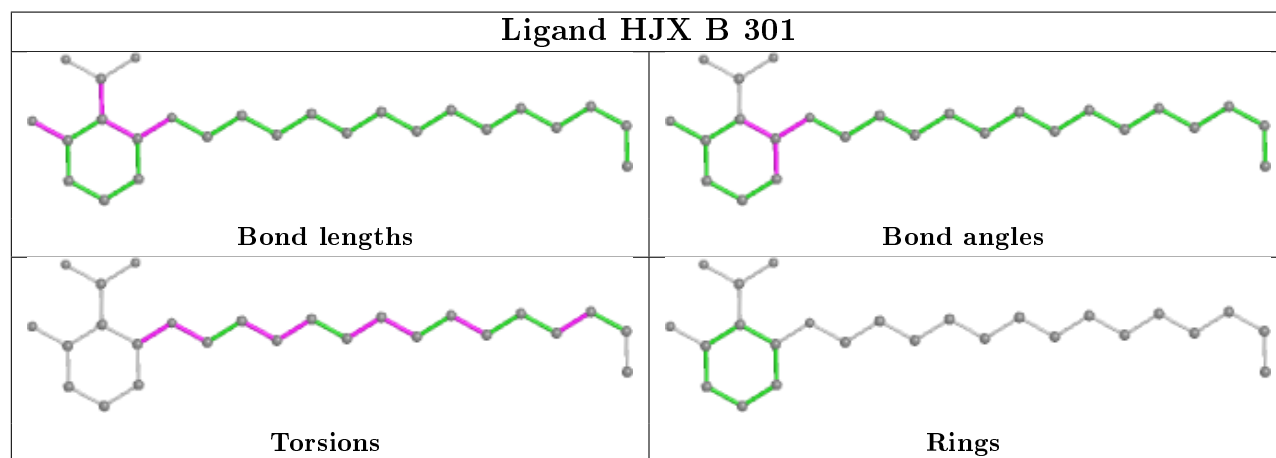
All (9) torsion outliers are listed below:

Mol	Chain	Res	Type	Atoms
2	B	301	HJX	CAP-CAQ-CAR-CAS
2	B	301	HJX	CAM-CAN-CAO-CAP
2	B	301	HJX	CAK-CAL-CAM-CAN
2	B	301	HJX	CAH-CAI-CAJ-CAK
2	B	301	HJX	CAS-CAT-OAU-CAX
2	B	301	HJX	CAG-CAX-OAU-CAT
2	B	301	HJX	CAQ-CAR-CAS-CAT
2	B	301	HJX	CAY-CAX-OAU-CAT
2	B	301	HJX	CAN-CAO-CAP-CAQ

There are no ring outliers.

No monomer is involved in short contacts.

The following is a two-dimensional graphical depiction of Mogul quality analysis of bond lengths, bond angles, torsion angles, and ring geometry for all instances of the Ligand of Interest. In addition, ligands with molecular weight > 250 and outliers as shown on the validation Tables will also be included. For torsion angles, if less than 5% of the Mogul distribution of torsion angles is within 10 degrees of the torsion angle in question, then that torsion angle is considered an outlier. Any bond that is central to one or more torsion angles identified as an outlier by Mogul will be highlighted in the graph. For rings, the root-mean-square deviation (RMSD) between the ring in question and similar rings identified by Mogul is calculated over all ring torsion angles. If the average RMSD is greater than 60 degrees and the minimal RMSD between the ring in question and any Mogul-identified rings is also greater than 60 degrees, then that ring is considered an outlier. The outliers are highlighted in purple. The color gray indicates Mogul did not find sufficient equivalents in the CSD to analyse the geometry.



## 5.7 Other polymers [i](#)

There are no such residues in this entry.

## 5.8 Polymer linkage issues [i](#)

There are no chain breaks in this entry.

## 6 Fit of model and data ⓘ

### 6.1 Protein, DNA and RNA chains ⓘ

In the following table, the column labelled ‘#RSRZ> 2’ contains the number (and percentage) of RSRZ outliers, followed by percent RSRZ outliers for the chain as percentile scores relative to all X-ray entries and entries of similar resolution. The OWAB column contains the minimum, median, 95<sup>th</sup> percentile and maximum values of the occupancy-weighted average B-factor per residue. The column labelled ‘Q< 0.9’ lists the number of (and percentage) of residues with an average occupancy less than 0.9.

Mol	Chain	Analysed	<RSRZ>	#RSRZ>2	OWAB(Å <sup>2</sup> )	Q<0.9
1	A	206/253 (81%)	0.53	25 (12%) 4 4	28, 49, 88, 108	0
1	B	200/253 (79%)	0.37	19 (9%) 8 8	27, 44, 86, 118	0
All	All	406/506 (80%)	0.45	44 (10%) 5 6	27, 47, 88, 118	0

All (44) RSRZ outliers are listed below:

Mol	Chain	Res	Type	RSRZ
1	B	171	GLN	5.0
1	B	162	VAL	4.9
1	A	239	ARG	4.3
1	B	117	ASN	3.9
1	A	117	ASN	3.7
1	B	94	ASP	3.6
1	A	167	LEU	3.4
1	B	91	TRP	3.3
1	A	119	ARG	3.3
1	A	115	ARG	3.3
1	B	115	ARG	3.3
1	A	39	ARG	3.3
1	B	23	ILE	3.3
1	B	172	ILE	3.1
1	A	116	PHE	3.0
1	A	206	LEU	2.9
1	A	14	PRO	2.9
1	A	23	ILE	2.8
1	A	71	SER	2.7
1	B	205	LEU	2.6
1	A	205	LEU	2.6
1	A	170	ASP	2.6
1	B	160	GLU	2.6
1	B	71	SER	2.5

*Continued on next page...*

*Continued from previous page...*

Mol	Chain	Res	Type	RSRZ
1	A	22	ALA	2.5
1	B	114	SER	2.5
1	A	237	ALA	2.5
1	A	24	ILE	2.5
1	A	193	ILE	2.4
1	B	67	LEU	2.3
1	A	171	GLN	2.3
1	A	141	ILE	2.3
1	B	170	ASP	2.2
1	B	92	ALA	2.2
1	A	67	LEU	2.2
1	B	39	ARG	2.1
1	B	156	ARG	2.1
1	B	93	LEU	2.1
1	A	166	ASN	2.1
1	A	114	SER	2.1
1	A	70	PHE	2.1
1	A	66	THR	2.0
1	B	221	TRP	2.0
1	A	192	VAL	2.0

## 6.2 Non-standard residues in protein, DNA, RNA chains [i](#)

There are no non-standard protein/DNA/RNA residues in this entry.

## 6.3 Carbohydrates [i](#)

There are no carbohydrates in this entry.

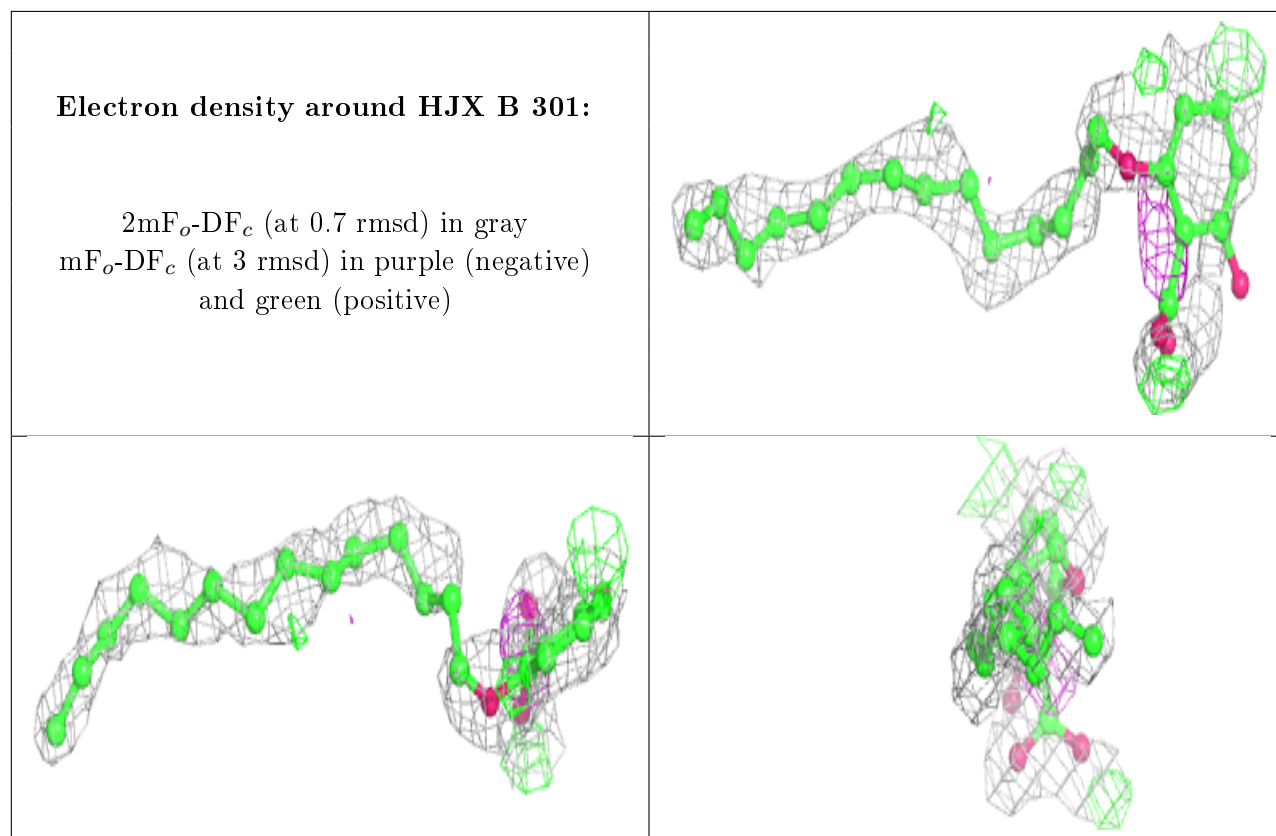
## 6.4 Ligands [i](#)

In the following table, the Atoms column lists the number of modelled atoms in the group and the number defined in the chemical component dictionary. The B-factors column lists the minimum, median, 95<sup>th</sup> percentile and maximum values of B factors of atoms in the group. The column labelled 'Q< 0.9' lists the number of atoms with occupancy less than 0.9.

Mol	Type	Chain	Res	Atoms	RSCC	RSR	B-factors( $\text{\AA}^2$ )	Q<0.9
2	HJX	B	301	25/25	0.36	0.32	63,84,115,120	0

The following is a graphical depiction of the model fit to experimental electron density of all

instances of the Ligand of Interest. In addition, ligands with molecular weight > 250 and outliers as shown on the geometry validation Tables will also be included. Each fit is shown from different orientation to approximate a three-dimensional view.



## 6.5 Other polymers [i](#)

There are no such residues in this entry.