



Full wwPDB X-ray Structure Validation Report ⓘ

May 29, 2020 – 05:40 pm BST

PDB ID : 2ZIM
Title : Pyrrolysyl-tRNA synthetase bound to adenylated pyrrolysine and pyrophosphate
Authors : Steitz, T.A.; Kavran, J.M.
Deposited on : 2008-02-19
Resolution : 2.10 Å(reported)

This is a Full wwPDB X-ray Structure Validation Report for a publicly released PDB entry.

We welcome your comments at validation@mail.wwpdb.org

A user guide is available at

<https://www.wwpdb.org/validation/2017/XrayValidationReportHelp>

with specific help available everywhere you see the ⓘ symbol.

The following versions of software and data (see [references ⓘ](#)) were used in the production of this report:

MolProbity	:	4.02b-467
Mogul	:	1.8.5 (274361), CSD as541be (2020)
Xtriage (Phenix)	:	1.13
EDS	:	2.11
buster-report	:	1.1.7 (2018)
Percentile statistics	:	20191225.v01 (using entries in the PDB archive December 25th 2019)
Refmac	:	5.8.0158
CCP4	:	7.0.044 (Gargrove)
Ideal geometry (proteins)	:	Engh & Huber (2001)
Ideal geometry (DNA, RNA)	:	Parkinson et al. (1996)
Validation Pipeline (wwPDB-VP)	:	2.11

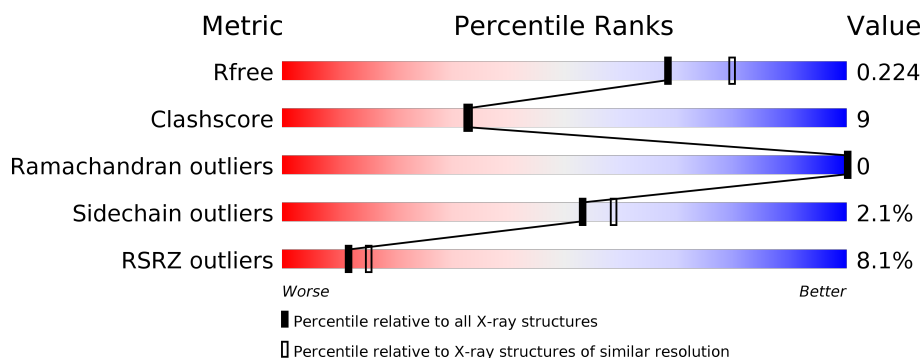
1 Overall quality at a glance

The following experimental techniques were used to determine the structure:

X-RAY DIFFRACTION

The reported resolution of this entry is 2.10 Å.

Percentile scores (ranging between 0-100) for global validation metrics of the entry are shown in the following graphic. The table shows the number of entries on which the scores are based.



Metric	Whole archive (#Entries)	Similar resolution (#Entries, resolution range(Å))
R_{free}	130704	5197 (2.10-2.10)
Clashscore	141614	5710 (2.10-2.10)
Ramachandran outliers	138981	5647 (2.10-2.10)
Sidechain outliers	138945	5648 (2.10-2.10)
RSRZ outliers	127900	5083 (2.10-2.10)

The table below summarises the geometric issues observed across the polymeric chains and their fit to the electron density. The red, orange, yellow and green segments on the lower bar indicate the fraction of residues that contain outliers for ≥ 3 , 2, 1 and 0 types of geometric quality criteria respectively. A grey segment represents the fraction of residues that are not modelled. The numeric value for each fraction is indicated below the corresponding segment, with a dot representing fractions $\leq 5\%$. The upper red bar (where present) indicates the fraction of residues that have poor fit to the electron density. The numeric value is given above the bar.

Mol	Chain	Length	Quality of chain
1	A	291	<div> <div>7%</div> <div>78%</div> <div>10%</div> <div>11%</div> </div>

The following table lists non-polymeric compounds, carbohydrate monomers and non-standard residues in protein, DNA, RNA chains that are outliers for geometric or electron-density-fit criteria:

Mol	Type	Chain	Res	Chirality	Geometry	Clashes	Electron density
2	EDO	A	904	-	-	X	-
2	EDO	A	911	-	-	-	X

Continued on next page...

Continued from previous page...

Mol	Type	Chain	Res	Chirality	Geometry	Clashes	Electron density
3	YLY	A	1	X	-	-	-
4	POP	A	901	-	-	X	-

2 Entry composition

There are 5 unique types of molecules in this entry. The entry contains 2423 atoms, of which 0 are hydrogens and 0 are deuteriums.

In the tables below, the ZeroOcc column contains the number of atoms modelled with zero occupancy, the AltConf column contains the number of residues with at least one atom in alternate conformation and the Trace column contains the number of residues modelled with at most 2 atoms.

- Molecule 1 is a protein called Pyrrolysyl-tRNA synthetase.

Mol	Chain	Residues	Atoms					ZeroOcc	AltConf	Trace
			Total	C	N	O	S			
1	A	260	2148	1371	367	398	12	0	5	0

There are 21 discrepancies between the modelled and reference sequences:

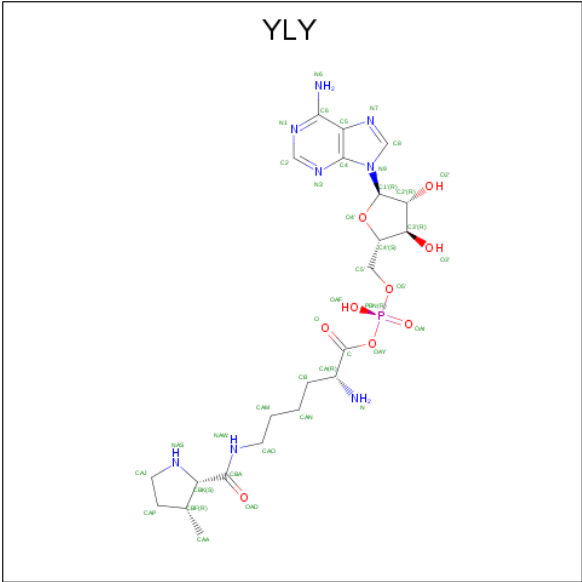
Chain	Residue	Modelled	Actual	Comment	Reference
A	164	MET	-	EXPRESSION TAG	UNP Q8PWY1
A	165	GLY	-	EXPRESSION TAG	UNP Q8PWY1
A	166	SER	-	EXPRESSION TAG	UNP Q8PWY1
A	167	SER	-	EXPRESSION TAG	UNP Q8PWY1
A	168	HIS	-	EXPRESSION TAG	UNP Q8PWY1
A	169	HIS	-	EXPRESSION TAG	UNP Q8PWY1
A	170	HIS	-	EXPRESSION TAG	UNP Q8PWY1
A	171	HIS	-	EXPRESSION TAG	UNP Q8PWY1
A	172	HIS	-	EXPRESSION TAG	UNP Q8PWY1
A	173	HIS	-	EXPRESSION TAG	UNP Q8PWY1
A	174	SER	-	EXPRESSION TAG	UNP Q8PWY1
A	175	SER	-	EXPRESSION TAG	UNP Q8PWY1
A	176	GLY	-	EXPRESSION TAG	UNP Q8PWY1
A	177	LEU	-	EXPRESSION TAG	UNP Q8PWY1
A	178	VAL	-	EXPRESSION TAG	UNP Q8PWY1
A	179	PRO	-	EXPRESSION TAG	UNP Q8PWY1
A	180	ARG	-	EXPRESSION TAG	UNP Q8PWY1
A	181	GLY	-	EXPRESSION TAG	UNP Q8PWY1
A	182	SER	-	EXPRESSION TAG	UNP Q8PWY1
A	183	HIS	-	EXPRESSION TAG	UNP Q8PWY1
A	184	MET	-	EXPRESSION TAG	UNP Q8PWY1

- Molecule 2 is 1,2-ETHANEDIOL (three-letter code: EDO) (formula: C₂H₆O₂).



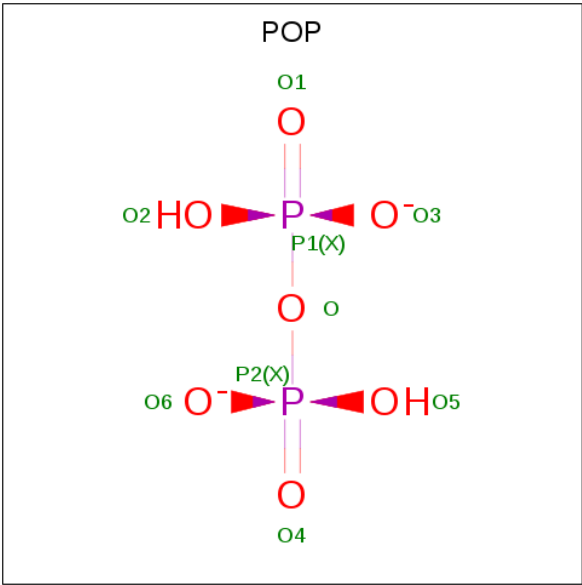
Mol	Chain	Residues	Atoms			ZeroOcc	AltConf
2	A	1	Total	C	O	0	0
			4	2	2		
2	A	1	Total	C	O	0	0
			4	2	2		
2	A	1	Total	C	O	0	0
			4	2	2		
2	A	1	Total	C	O	0	0
			4	2	2		
2	A	1	Total	C	O	0	0
			4	2	2		
2	A	1	Total	C	O	0	0
			4	2	2		
2	A	1	Total	C	O	0	0
			4	2	2		
2	A	1	Total	C	O	0	0
			4	2	2		

- Molecule 3 is (2R)-2-AMINO-6-({[(2S,3R)-3-METHYLPYRROLIDIN-2-YL]CARBONYL }AMINO)HEXANOYL [(2S,3R,4R,5R)-5-(6-AMINO-9H-PURIN-9-YL)-3,4-DIHYDROXYTETRAHYDROFURAN-2-YL]METHYL HYDROGEN (R)-PHOSPHATE (three-letter code: YLY) (formula: C₂₂H₃₅N₈O₉P).



Mol	Chain	Residues	Atoms					ZeroOcc	AltConf
3	A	1	Total	C	N	O	P	0	0
			40	22	8	9	1		

- Molecule 4 is PYROPHOSPHATE 2- (three-letter code: POP) (formula: $\text{H}_2\text{O}_7\text{P}_2$).



Mol	Chain	Residues	Atoms			ZeroOcc	AltConf
4	A	1	Total	O	P	0	0
			9	7	2		

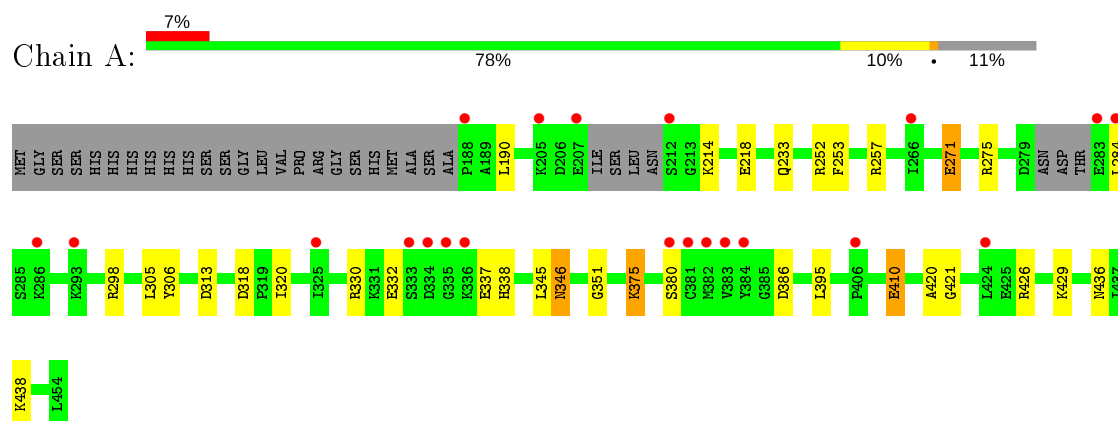
- Molecule 5 is water.

Mol	Chain	Residues	Atoms		ZeroOcc	AltConf
5	A	186	Total 186	O 186	0	0

3 Residue-property plots [i](#)

These plots are drawn for all protein, RNA and DNA chains in the entry. The first graphic for a chain summarises the proportions of the various outlier classes displayed in the second graphic. The second graphic shows the sequence view annotated by issues in geometry and electron density. Residues are color-coded according to the number of geometric quality criteria for which they contain at least one outlier: green = 0, yellow = 1, orange = 2 and red = 3 or more. A red dot above a residue indicates a poor fit to the electron density ($RSRZ > 2$). Stretches of 2 or more consecutive residues without any outlier are shown as a green connector. Residues present in the sample, but not in the model, are shown in grey.

- Molecule 1: Pyrrollysyl-tRNA synthetase



4 Data and refinement statistics

Property	Value	Source
Space group	P 64	Depositor
Cell constants a, b, c, α , β , γ	105.07Å 105.07Å 70.26Å 90.00° 90.00° 120.00°	Depositor
Resolution (Å)	34.40 – 2.10 34.39 – 2.10	Depositor EDS
% Data completeness (in resolution range)	99.9 (34.40-2.10) 99.9 (34.39-2.10)	Depositor EDS
R_{merge}	0.09	Depositor
R_{sym}	(Not available)	Depositor
$\langle I/\sigma(I) \rangle$ ¹	1.62 (at 2.10Å)	Xtriage
Refinement program	REFMAC 5.2.0019	Depositor
R, R_{free}	0.186 , 0.228 0.183 , 0.224	Depositor DCC
R_{free} test set	1311 reflections (5.07%)	wwPDB-VP
Wilson B-factor (Å ²)	42.9	Xtriage
Anisotropy	0.038	Xtriage
Bulk solvent k_{sol} (e/Å ³), B_{sol} (Å ²)	0.35 , 50.8	EDS
L-test for twinning ²	$\langle L \rangle = 0.50$, $\langle L^2 \rangle = 0.33$	Xtriage
Estimated twinning fraction	0.035 for h,-h-k,-l	Xtriage
F_o, F_c correlation	0.96	EDS
Total number of atoms	2423	wwPDB-VP
Average B, all atoms (Å ²)	45.0	wwPDB-VP

Xtriage's analysis on translational NCS is as follows: *The largest off-origin peak in the Patterson function is 6.36% of the height of the origin peak. No significant pseudotranslation is detected.*

¹Intensities estimated from amplitudes.

²Theoretical values of $\langle |L| \rangle$, $\langle L^2 \rangle$ for acentric reflections are 0.5, 0.333 respectively for untwinned datasets, and 0.375, 0.2 for perfectly twinned datasets.

5 Model quality [i](#)

5.1 Standard geometry [i](#)

Bond lengths and bond angles in the following residue types are not validated in this section: EDO, POP, YLY

The Z score for a bond length (or angle) is the number of standard deviations the observed value is removed from the expected value. A bond length (or angle) with $|Z| > 5$ is considered an outlier worth inspection. RMSZ is the root-mean-square of all Z scores of the bond lengths (or angles).

Mol	Chain	Bond lengths		Bond angles	
		RMSZ	$\# Z > 5$	RMSZ	$\# Z > 5$
1	A	0.97	3/2197 (0.1%)	0.86	1/2949 (0.0%)

All (3) bond length outliers are listed below:

Mol	Chain	Res	Type	Atoms	Z	Observed(Å)	Ideal(Å)
1	A	271	GLU	CG-CD	6.42	1.61	1.51
1	A	410	GLU	CG-CD	5.70	1.60	1.51
1	A	410	GLU	CB-CG	5.16	1.61	1.52

All (1) bond angle outliers are listed below:

Mol	Chain	Res	Type	Atoms	Z	Observed(°)	Ideal(°)
1	A	298	ARG	NE-CZ-NH2	-6.10	117.25	120.30

There are no chirality outliers.

There are no planarity outliers.

5.2 Too-close contacts [i](#)

In the following table, the Non-H and H(model) columns list the number of non-hydrogen atoms and hydrogen atoms in the chain respectively. The H(added) column lists the number of hydrogen atoms added and optimized by MolProbity. The Clashes column lists the number of clashes within the asymmetric unit, whereas Symm-Clashes lists symmetry related clashes.

Mol	Chain	Non-H	H(model)	H(added)	Clashes	Symm-Clashes
1	A	2148	0	2172	32	0
2	A	40	0	60	10	0
3	A	40	0	34	3	0
4	A	9	0	0	4	0

Continued on next page...

Continued from previous page...

Mol	Chain	Non-H	H(model)	H(added)	Clashes	Symm-Clashes
5	A	186	0	0	6	1
All	All	2423	0	2266	39	1

The all-atom clashscore is defined as the number of clashes found per 1000 atoms (including hydrogen atoms). The all-atom clashscore for this structure is 9.

All (39) close contacts within the same asymmetric unit are listed below, sorted by their clash magnitude.

Atom-1	Atom-2	Interatomic distance (Å)	Clash overlap (Å)
2:A:905:EDO:O1	2:A:909:EDO:H11	1.73	0.89
1:A:338:HIS:NE2	4:A:901:POP:O1	2.19	0.73
1:A:395:LEU:HD11	1:A:426:ARG:HD3	1.71	0.72
2:A:904:EDO:H22	5:A:1061:HOH:O	1.88	0.72
1:A:436:ASN:HD22	1:A:438:LYS:H	1.41	0.68
1:A:337:GLU:HG3	2:A:907:EDO:H21	1.77	0.66
1:A:436:ASN:ND2	1:A:438:LYS:H	1.92	0.66
1:A:337:GLU:OE1	1:A:429:LYS:HE3	1.98	0.63
1:A:275[A]:ARG:NH2	5:A:968:HOH:O	2.30	0.63
2:A:908:EDO:H21	5:A:1080:HOH:O	2.01	0.61
1:A:253:PHE:HA	2:A:904:EDO:H21	1.85	0.58
1:A:345:LEU:O	1:A:421:GLY:HA2	2.03	0.58
1:A:275[B]:ARG:HG3	1:A:410:GLU:HG2	1.89	0.55
4:A:901:POP:O4	4:A:901:POP:O1	2.25	0.55
1:A:257:ARG:HH12	2:A:904:EDO:C2	2.22	0.53
1:A:318:ASP:OD1	1:A:351:GLY:HA3	2.10	0.52
1:A:313:ASP:HA	1:A:320:ILE:HD11	1.91	0.51
1:A:275[B]:ARG:HG3	1:A:410:GLU:CG	2.42	0.50
1:A:313:ASP:HA	1:A:320:ILE:CD1	2.42	0.49
1:A:380:SER:CB	1:A:386:ASP:H	2.27	0.48
2:A:905:EDO:O1	2:A:909:EDO:C1	2.55	0.48
1:A:305:LEU:HB2	3:A:1:YLY:HAA3	1.95	0.47
1:A:375:LYS:HE2	5:A:1093:HOH:O	2.13	0.47
1:A:233:GLN:HA	2:A:911:EDO:H22	1.96	0.46
1:A:252:ARG:HG2	2:A:904:EDO:H11	1.97	0.46
3:A:1:YLY:H8	4:A:901:POP:O5	2.16	0.45
1:A:395:LEU:HA	2:A:907:EDO:H11	1.98	0.44
1:A:375:LYS:CE	5:A:1093:HOH:O	2.64	0.43
1:A:275[B]:ARG:CG	1:A:410:GLU:CG	2.96	0.43
1:A:275[B]:ARG:CG	1:A:410:GLU:HG2	2.48	0.43
1:A:271:GLU:HG2	1:A:275[A]:ARG:HE	1.84	0.43
1:A:380:SER:HB2	1:A:386:ASP:H	1.84	0.43

Continued on next page...

Continued from previous page...

Atom-1	Atom-2	Interatomic distance (Å)	Clash overlap (Å)
1:A:275[B]:ARG:NH1	5:A:1002:HOH:O	2.50	0.42
3:A:1:YLY:C8	4:A:901:POP:O5	2.67	0.42
1:A:330:ARG:O	1:A:332:GLU:HG2	2.20	0.42
1:A:346:ASN:HA	1:A:420:ALA:O	2.19	0.42
1:A:436:ASN:HD22	1:A:438:LYS:N	2.13	0.41
1:A:214:LYS:NZ	1:A:218:GLU:OE1	2.39	0.41
1:A:410:GLU:HG3	1:A:410:GLU:O	2.21	0.41

All (1) symmetry-related close contacts are listed below. The label for Atom-2 includes the symmetry operator and encoded unit-cell translations to be applied.

Atom-1	Atom-2	Interatomic distance (Å)	Clash overlap (Å)
5:A:939:HOH:O	5:A:1044:HOH:O[4_665]	2.17	0.03

5.3 Torsion angles [i](#)

5.3.1 Protein backbone [i](#)

In the following table, the Percentiles column shows the percent Ramachandran outliers of the chain as a percentile score with respect to all X-ray entries followed by that with respect to entries of similar resolution.

The Analysed column shows the number of residues for which the backbone conformation was analysed, and the total number of residues.

Mol	Chain	Analysed	Favoured	Allowed	Outliers	Percentiles	
1	A	259/291 (89%)	254 (98%)	5 (2%)	0	100	100

There are no Ramachandran outliers to report.

5.3.2 Protein sidechains [i](#)

In the following table, the Percentiles column shows the percent sidechain outliers of the chain as a percentile score with respect to all X-ray entries followed by that with respect to entries of similar resolution.

The Analysed column shows the number of residues for which the sidechain conformation was analysed, and the total number of residues.

Mol	Chain	Analysed	Rotameric	Outliers	Percentiles
1	A	239/260 (92%)	234 (98%)	5 (2%)	53 59

All (5) residues with a non-rotameric sidechain are listed below:

Mol	Chain	Res	Type
1	A	190	LEU
1	A	284	LEU
1	A	306	TYR
1	A	346	ASN
1	A	375	LYS

Some sidechains can be flipped to improve hydrogen bonding and reduce clashes. All (2) such sidechains are listed below:

Mol	Chain	Res	Type
1	A	232	GLN
1	A	436	ASN

5.3.3 RNA [i](#)

There are no RNA molecules in this entry.

5.4 Non-standard residues in protein, DNA, RNA chains [i](#)

There are no non-standard protein/DNA/RNA residues in this entry.

5.5 Carbohydrates [i](#)

There are no carbohydrates in this entry.

5.6 Ligand geometry [i](#)

12 ligands are modelled in this entry.

In the following table, the Counts columns list the number of bonds (or angles) for which Mogul statistics could be retrieved, the number of bonds (or angles) that are observed in the model and the number of bonds (or angles) that are defined in the Chemical Component Dictionary. The Link column lists molecule types, if any, to which the group is linked. The Z score for a bond length (or angle) is the number of standard deviations the observed value is removed from the expected value. A bond length (or angle) with $|Z| > 2$ is considered an outlier worth inspection. RMSZ is the root-mean-square of all Z scores of the bond lengths (or angles).

Mol	Type	Chain	Res	Link	Bond lengths			Bond angles		
					Counts	RMSZ	# Z > 2	Counts	RMSZ	# Z > 2
2	EDO	A	903	-	3,3,3	0.37	0	2,2,2	1.14	0
2	EDO	A	908	-	3,3,3	0.47	0	2,2,2	0.33	0
2	EDO	A	902	-	3,3,3	0.35	0	2,2,2	0.50	0
2	EDO	A	907	-	3,3,3	0.51	0	2,2,2	0.76	0
3	YLY	A	1	-	37,43,43	1.29	3 (8%)	40,62,62	1.81	7 (17%)
2	EDO	A	906	-	3,3,3	0.39	0	2,2,2	0.58	0
4	POP	A	901	-	6,8,8	0.79	0	13,13,13	2.08	2 (15%)
2	EDO	A	905	-	3,3,3	0.45	0	2,2,2	0.41	0
2	EDO	A	909	-	3,3,3	0.47	0	2,2,2	0.51	0
2	EDO	A	910	-	3,3,3	0.32	0	2,2,2	0.58	0
2	EDO	A	904	-	3,3,3	0.39	0	2,2,2	0.59	0
2	EDO	A	911	-	3,3,3	0.53	0	2,2,2	0.35	0

In the following table, the Chirals column lists the number of chiral outliers, the number of chiral centers analysed, the number of these observed in the model and the number defined in the Chemical Component Dictionary. Similar counts are reported in the Torsion and Rings columns. '-' means no outliers of that kind were identified.

Mol	Type	Chain	Res	Link	Chirals	Torsions	Rings
2	EDO	A	903	-	-	0/1/1/1	-
2	EDO	A	908	-	-	1/1/1/1	-
2	EDO	A	902	-	-	1/1/1/1	-
2	EDO	A	907	-	-	1/1/1/1	-
3	YLY	A	1	-	3/3/10/12	4/25/57/57	0/4/4/4
2	EDO	A	906	-	-	1/1/1/1	-
4	POP	A	901	-	-	1/6/6/6	-
2	EDO	A	905	-	-	0/1/1/1	-
2	EDO	A	909	-	-	1/1/1/1	-
2	EDO	A	910	-	-	0/1/1/1	-
2	EDO	A	904	-	-	0/1/1/1	-
2	EDO	A	911	-	-	0/1/1/1	-

All (3) bond length outliers are listed below:

Mol	Chain	Res	Type	Atoms	Z	Observed(Å)	Ideal(Å)
3	A	1	YLY	CAJ-NAS	-5.79	1.28	1.49
3	A	1	YLY	C2'-C1'	-2.39	1.50	1.53
3	A	1	YLY	O4'-C1'	2.39	1.44	1.41

All (9) bond angle outliers are listed below:

Mol	Chain	Res	Type	Atoms	Z	Observed(°)	Ideal(°)
4	A	901	POP	P2-O-P1	-6.10	111.91	132.83
3	A	1	YLY	CAA-CBF-CBK	-5.28	101.75	113.57
3	A	1	YLY	N3-C2-N1	-4.74	121.27	128.68
3	A	1	YLY	CBA-CBK-NAS	3.99	119.07	111.73
3	A	1	YLY	OAY-PBN-O5'	-3.29	93.32	102.92
3	A	1	YLY	CBK-CBA-NAW	-2.88	111.43	116.41
4	A	901	POP	O2-P1-O	2.58	113.29	104.64
3	A	1	YLY	CAP-CAJ-NAS	2.50	112.92	105.74
3	A	1	YLY	OAF-PBN-OAI	2.37	123.97	112.24

All (3) chirality outliers are listed below:

Mol	Chain	Res	Type	Atom
3	A	1	YLY	C4'
3	A	1	YLY	CA
3	A	1	YLY	C3'

All (10) torsion outliers are listed below:

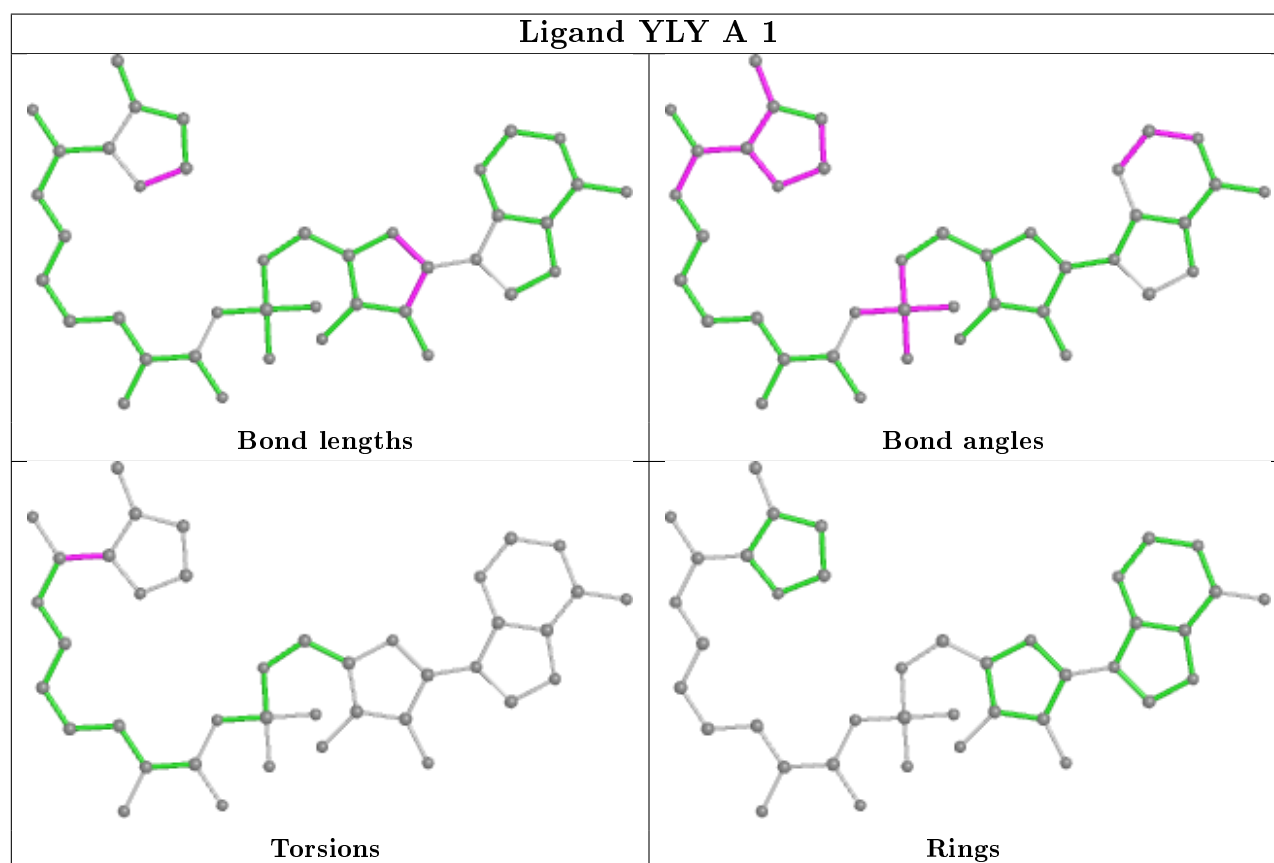
Mol	Chain	Res	Type	Atoms
3	A	1	YLY	OAD-CBA-CBK-NAS
3	A	1	YLY	NAW-CBA-CBK-NAS
4	A	901	POP	P1-O-P2-O5
2	A	909	EDO	O1-C1-C2-O2
2	A	908	EDO	O1-C1-C2-O2
2	A	906	EDO	O1-C1-C2-O2
3	A	1	YLY	OAD-CBA-CBK-CBF
3	A	1	YLY	NAW-CBA-CBK-CBF
2	A	902	EDO	O1-C1-C2-O2
2	A	907	EDO	O1-C1-C2-O2

There are no ring outliers.

8 monomers are involved in 15 short contacts:

Mol	Chain	Res	Type	Clashes	Symm-Clashes
2	A	908	EDO	1	0
2	A	907	EDO	2	0
3	A	1	YLY	3	0
4	A	901	POP	4	0
2	A	905	EDO	2	0
2	A	909	EDO	2	0
2	A	904	EDO	4	0
2	A	911	EDO	1	0

The following is a two-dimensional graphical depiction of Mogul quality analysis of bond lengths, bond angles, torsion angles, and ring geometry for all instances of the Ligand of Interest. In addition, ligands with molecular weight > 250 and outliers as shown on the validation Tables will also be included. For torsion angles, if less than 5% of the Mogul distribution of torsion angles is within 10 degrees of the torsion angle in question, then that torsion angle is considered an outlier. Any bond that is central to one or more torsion angles identified as an outlier by Mogul will be highlighted in the graph. For rings, the root-mean-square deviation (RMSD) between the ring in question and similar rings identified by Mogul is calculated over all ring torsion angles. If the average RMSD is greater than 60 degrees and the minimal RMSD between the ring in question and any Mogul-identified rings is also greater than 60 degrees, then that ring is considered an outlier. The outliers are highlighted in purple. The color gray indicates Mogul did not find sufficient equivalents in the CSD to analyse the geometry.



5.7 Other polymers [i](#)

There are no such residues in this entry.

5.8 Polymer linkage issues [i](#)

There are no chain breaks in this entry.

6 Fit of model and data [i](#)

6.1 Protein, DNA and RNA chains [i](#)

In the following table, the column labelled ‘#RSRZ> 2’ contains the number (and percentage) of RSRZ outliers, followed by percent RSRZ outliers for the chain as percentile scores relative to all X-ray entries and entries of similar resolution. The OWAB column contains the minimum, median, 95th percentile and maximum values of the occupancy-weighted average B-factor per residue. The column labelled ‘Q< 0.9’ lists the number of (and percentage) of residues with an average occupancy less than 0.9.

Mol	Chain	Analysed	<RSRZ>	#RSRZ>2	OWAB(Å ²)	Q<0.9
1	A	260/291 (89%)	0.15	21 (8%) 12 15	29, 40, 70, 82	0

All (21) RSRZ outliers are listed below:

Mol	Chain	Res	Type	RSRZ
1	A	382	MET	6.3
1	A	333	SER	6.2
1	A	380	SER	4.1
1	A	334	ASP	4.0
1	A	188	PRO	4.0
1	A	335	GLY	3.9
1	A	207	GLU	3.6
1	A	383	VAL	3.4
1	A	212	SER	3.2
1	A	293	LYS	3.2
1	A	205	LYS	2.8
1	A	336	LYS	2.8
1	A	283	GLU	2.6
1	A	286	LYS	2.3
1	A	384	TYR	2.3
1	A	266	ILE	2.3
1	A	424	LEU	2.3
1	A	406	PRO	2.2
1	A	325	ILE	2.1
1	A	381	CYS	2.1
1	A	284	LEU	2.0

6.2 Non-standard residues in protein, DNA, RNA chains [i](#)

There are no non-standard protein/DNA/RNA residues in this entry.

6.3 Carbohydrates ⓘ

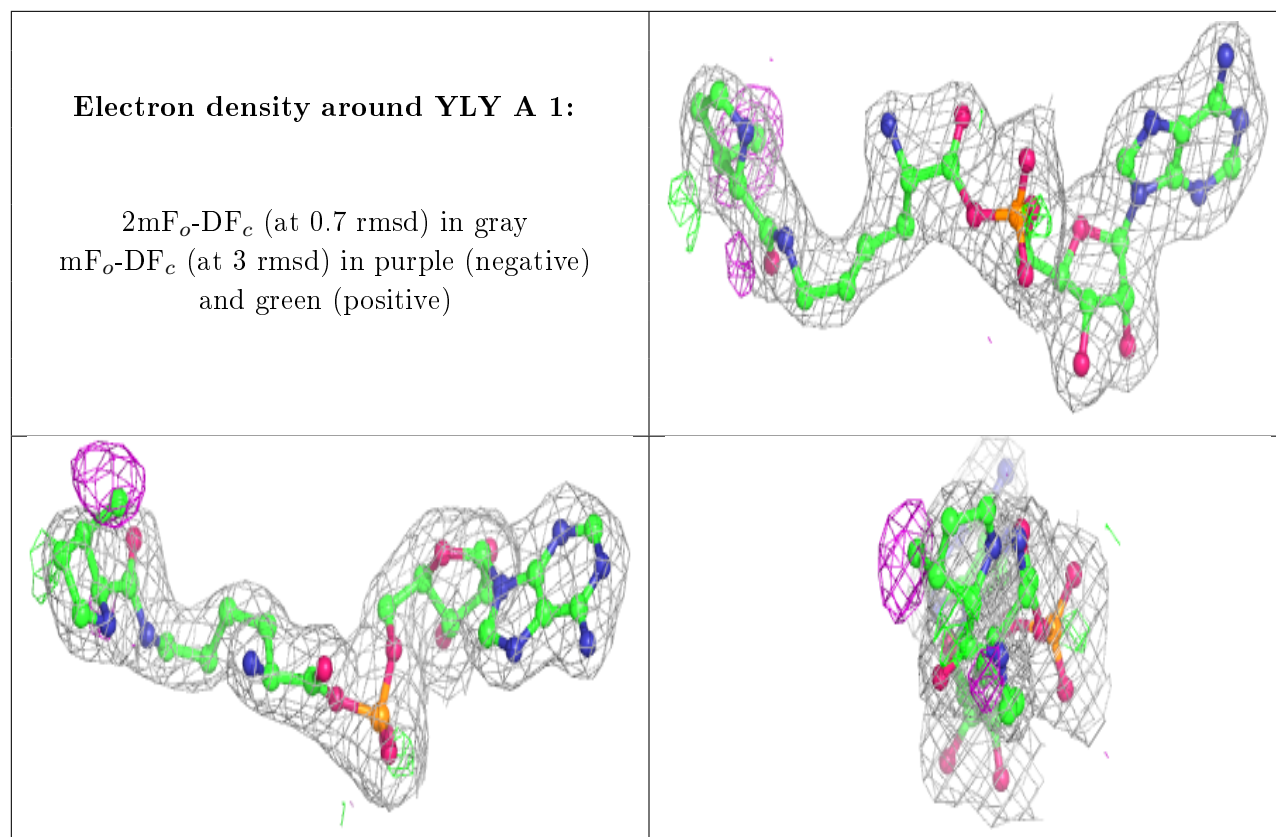
There are no carbohydrates in this entry.

6.4 Ligands ⓘ

In the following table, the Atoms column lists the number of modelled atoms in the group and the number defined in the chemical component dictionary. The B-factors column lists the minimum, median, 95th percentile and maximum values of B factors of atoms in the group. The column labelled 'Q< 0.9' lists the number of atoms with occupancy less than 0.9.

Mol	Type	Chain	Res	Atoms	RSCC	RSR	B-factors(Å ²)	Q<0.9
2	EDO	A	911	4/4	0.75	0.44	78,79,79,79	0
2	EDO	A	909	4/4	0.79	0.18	70,71,71,74	0
4	POP	A	901	9/9	0.82	0.23	67,68,69,69	9
2	EDO	A	908	4/4	0.87	0.21	73,73,75,77	0
2	EDO	A	905	4/4	0.90	0.27	62,63,66,67	0
2	EDO	A	906	4/4	0.94	0.10	58,60,61,63	0
2	EDO	A	904	4/4	0.96	0.26	60,62,62,64	0
2	EDO	A	907	4/4	0.96	0.29	64,65,65,67	0
2	EDO	A	910	4/4	0.97	0.12	51,52,52,55	0
2	EDO	A	903	4/4	0.98	0.11	40,41,45,46	0
3	YLY	A	1	40/40	0.98	0.09	33,38,47,55	0
2	EDO	A	902	4/4	0.98	0.16	36,38,39,41	0

The following is a graphical depiction of the model fit to experimental electron density of all instances of the Ligand of Interest. In addition, ligands with molecular weight > 250 and outliers as shown on the geometry validation Tables will also be included. Each fit is shown from different orientation to approximate a three-dimensional view.



6.5 Other polymers [i](#)

There are no such residues in this entry.