



wwPDB X-ray Structure Validation Summary Report ⓘ

Dec 3, 2020 – 11:24 AM GMT

PDB ID : 6ZIA
Title : Ultrafast Structural Response to Charge Redistribution Within a Photosynthetic Reaction Centre - 8 us structure
Authors : Baath, P.; Dods, R.; Braenden, G.; Neutze, R.
Deposited on : 2020-06-25
Resolution : 2.80 Å(reported)

This is a wwPDB X-ray Structure Validation Summary Report for a publicly released PDB entry.

We welcome your comments at validation@mail.wwpdb.org

A user guide is available at

<https://www.wwpdb.org/validation/2017/XrayValidationReportHelp>

with specific help available everywhere you see the ⓘ symbol.

The following versions of software and data (see [references ⓘ](#)) were used in the production of this report:

MolProbity : 4.02b-467
Mogul : 1.8.5 (274361), CSD as541be (2020)
Xtriage (Phenix) : 1.13
EDS : 2.14.6
buster-report : 1.1.7 (2018)
Percentile statistics : 20191225.v01 (using entries in the PDB archive December 25th 2019)
Refmac : 5.8.0158
CCP4 : 7.0.044 (Gargrove)
Ideal geometry (proteins) : Engh & Huber (2001)
Ideal geometry (DNA, RNA) : Parkinson et al. (1996)
Validation Pipeline (wwPDB-VP) : 2.14.6

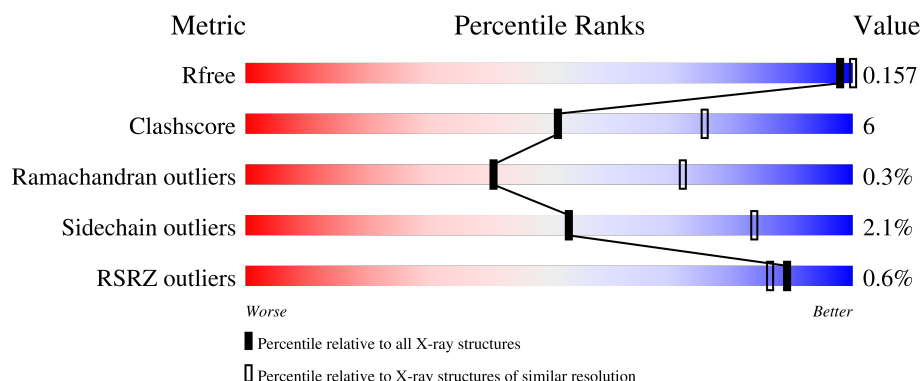
1 Overall quality at a glance

The following experimental techniques were used to determine the structure:

X-RAY DIFFRACTION

The reported resolution of this entry is 2.80 Å.

Percentile scores (ranging between 0-100) for global validation metrics of the entry are shown in the following graphic. The table shows the number of entries on which the scores are based.



Metric	Whole archive (#Entries)	Similar resolution (#Entries, resolution range(Å))
R_{free}	130704	3140 (2.80-2.80)
Clashscore	141614	3569 (2.80-2.80)
Ramachandran outliers	138981	3498 (2.80-2.80)
Sidechain outliers	138945	3500 (2.80-2.80)
RSRZ outliers	127900	3078 (2.80-2.80)

The table below summarises the geometric issues observed across the polymeric chains and their fit to the electron density. The red, orange, yellow and green segments on the lower bar indicate the fraction of residues that contain outliers for ≥ 3 , 2, 1 and 0 types of geometric quality criteria respectively. A grey segment represents the fraction of residues that are not modelled. The numeric value for each fraction is indicated below the corresponding segment, with a dot representing fractions $\leq 5\%$. The upper red bar (where present) indicates the fraction of residues that have poor fit to the electron density. The numeric value is given above the bar.

Mol	Chain	Length	Quality of chain
1	C	336	<div> <div>89%</div> <div>9% ..</div> </div>
2	H	258	<div> <div>2%</div> <div>84%</div> <div>14% .</div> </div>
3	L	273	<div> <div>88%</div> <div>12%</div> </div>
4	M	323	<div> <div>%</div> <div>90%</div> <div>10%</div> </div>

The following table lists non-polymeric compounds, carbohydrate monomers and non-standard

residues in protein, DNA, RNA chains that are outliers for geometric or electron-density-fit criteria:

Mol	Type	Chain	Res	Chirality	Geometry	Clashes	Electron density
6	DGA	C	405	-	-	-	X
7	SO4	M	407	-	-	X	-
8	LDA	M	413	-	-	-	X

2 Entry composition

There are 15 unique types of molecules in this entry. The entry contains 11472 atoms, of which 0 are hydrogens and 0 are deuteriums.

In the tables below, the ZeroOcc column contains the number of atoms modelled with zero occupancy, the AltConf column contains the number of residues with at least one atom in alternate conformation and the Trace column contains the number of residues modelled with at most 2 atoms.

- Molecule 1 is a protein called Photosynthetic reaction center cytochrome c subunit.

Mol	Chain	Residues	Atoms					ZeroOcc	AltConf	Trace
1	C	332	Total	C	N	O	S	0	0	0
			2602	1640	466	478	18			

- Molecule 2 is a protein called Reaction center protein H chain.

Mol	Chain	Residues	Atoms					ZeroOcc	AltConf	Trace
2	H	258	Total	C	N	O	S	0	0	0
			2018	1292	344	380	2			

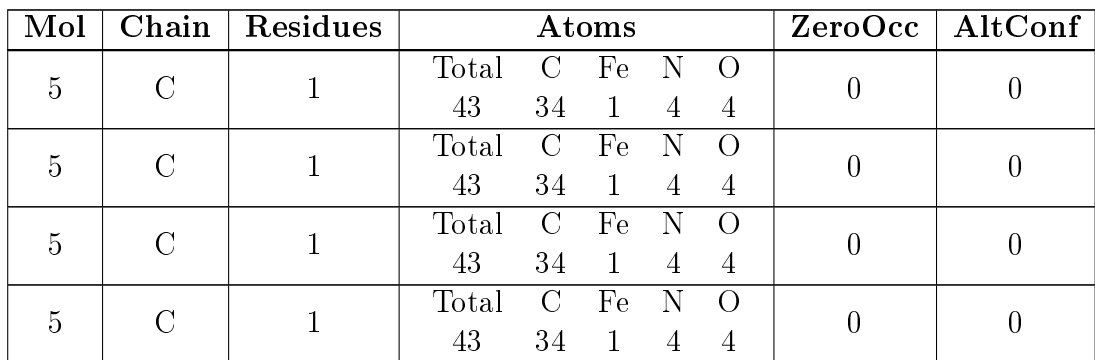
- Molecule 3 is a protein called Reaction center protein L chain.

Mol	Chain	Residues	Atoms					ZeroOcc	AltConf	Trace
3	L	273	Total	C	N	O	S	0	41	0
			2508	1678	409	413	8			

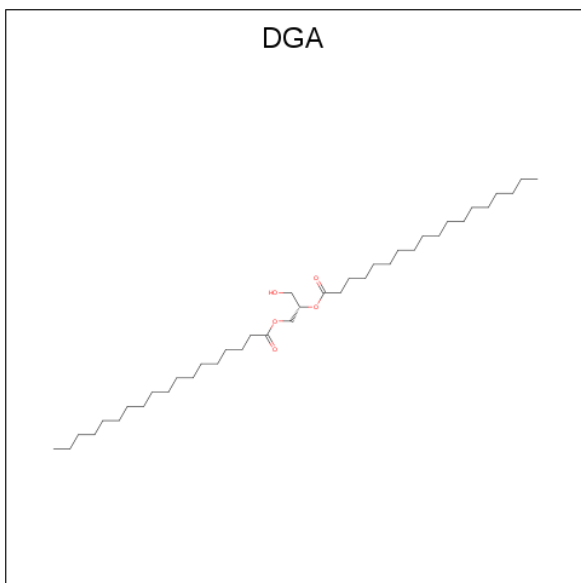
- Molecule 4 is a protein called Reaction center protein M chain.

Mol	Chain	Residues	Atoms					ZeroOcc	AltConf	Trace
4	M	323	Total	C	N	O	S	0	51	0
			2977	1983	491	490	13			

- Molecule 5 is HEME C (three-letter code: HEC) (formula: $C_{34}H_{34}FeN_4O_4$).



- Molecule 6 is DIACYL GLYCEROL (three-letter code: DGA) (formula: $\text{C}_{39}\text{H}_{76}\text{O}_5$).



Mol	Chain	Residues	Atoms			ZeroOcc	AltConf
6	C	1	Total	C	O	0	0
			37	33	4		

- Molecule 7 is SULFATE ION (three-letter code: SO4) (formula: O₄S).



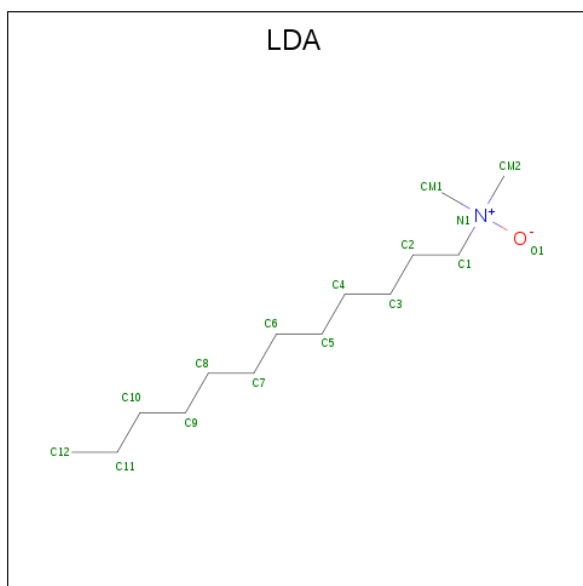
Mol	Chain	Residues	Atoms			ZeroOcc	AltConf
7	C	1	Total	O	S	0	0
			5	4	1		
7	C	1	Total	O	S	0	0
			5	4	1		
7	C	1	Total	O	S	0	0
			5	4	1		
7	H	1	Total	O	S	0	0
			5	4	1		
7	H	1	Total	O	S	0	0
			5	4	1		
7	H	1	Total	O	S	0	0
			5	4	1		
7	H	1	Total	O	S	0	0
			5	4	1		
7	M	1	Total	O	S	0	0
			5	4	1		
7	M	1	Total	O	S	0	0
			5	4	1		
7	M	1	Total	O	S	0	0
			5	4	1		

Continued on next page...

Continued from previous page...

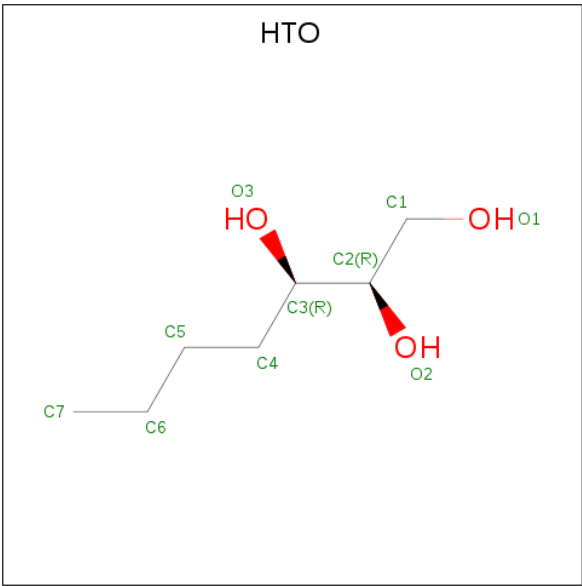
Mol	Chain	Residues	Atoms			ZeroOcc	AltConf
7	M	1	Total	O	S	0	0
			5	4	1		
7	M	1	Total	O	S	0	0
			5	4	1		
7	M	1	Total	O	S	0	0
			5	4	1		
7	M	1	Total	O	S	0	0
			5	4	1		

- Molecule 8 is LAURYL DIMETHYLAMINE-N-OXIDE (three-letter code: LDA) (formula: $C_{14}H_{31}NO$).



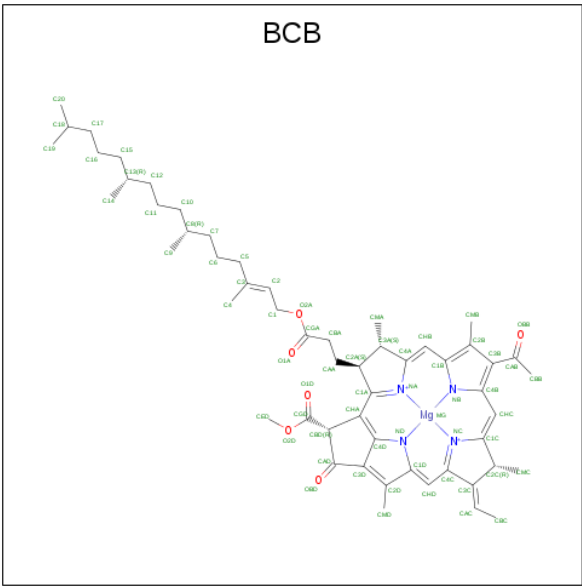
Mol	Chain	Residues	Atoms				ZeroOcc	AltConf
8	H	1	Total	C	N	O	0	0
			16	14	1	1		
8	H	1	Total	C	N	O	0	0
			16	14	1	1		
8	H	1	Total	C	N	O	0	0
			16	14	1	1		
8	L	1	Total	C	N	O	0	0
			16	14	1	1		
8	L	1	Total	C	N	O	0	0
			16	14	1	1		
8	M	1	Total	C	N	O	0	0
			16	14	1	1		
8	M	1	Total	C	N	O	0	0
			16	14	1	1		

- Molecule 9 is HEPTANE-1,2,3-TRIOL (three-letter code: HTO) (formula: C₇H₁₆O₃).



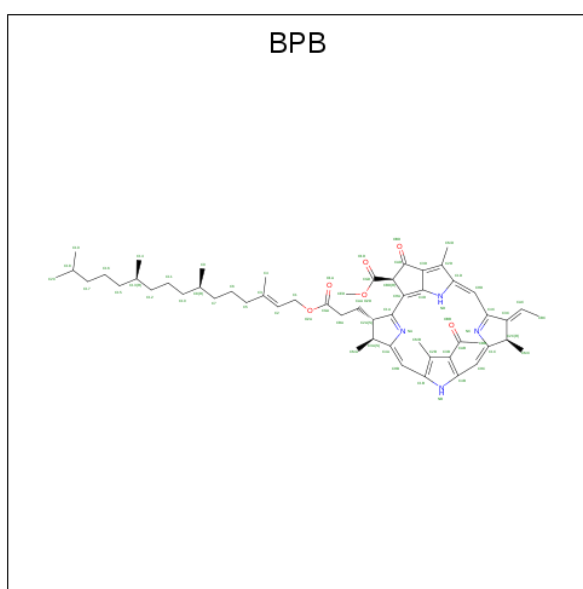
Mol	Chain	Residues	Atoms			ZeroOcc	AltConf
9	H	1	Total	C	O	0	0
			10	7	3		
9	H	1	Total	C	O	0	0
			10	7	3		
9	L	1	Total	C	O	0	0
			10	7	3		

- Molecule 10 is BACTERIOCHLOROPHYLL B (three-letter code: BCB) (formula: C₅₅H₇₂MgN₄O₆) (labeled as "Ligand of Interest" by author).



Mol	Chain	Residues	Atoms					ZeroOcc	AltConf
10	L	1	Total	C	Mg	N	O	0	1
			132	110	2	8	12		
10	L	1	Total	C	Mg	N	O	0	1
			132	110	2	8	12		
10	L	1	Total	C	Mg	N	O	0	0
			66	55	1	4	6		
10	M	1	Total	C	Mg	N	O	0	1
			132	110	2	8	12		

- Molecule 11 is BACTERIOPHEOPHYTIN B (three-letter code: BPB) (formula: C₅₅H₇₄N₄O₆) (labeled as "Ligand of Interest" by author).

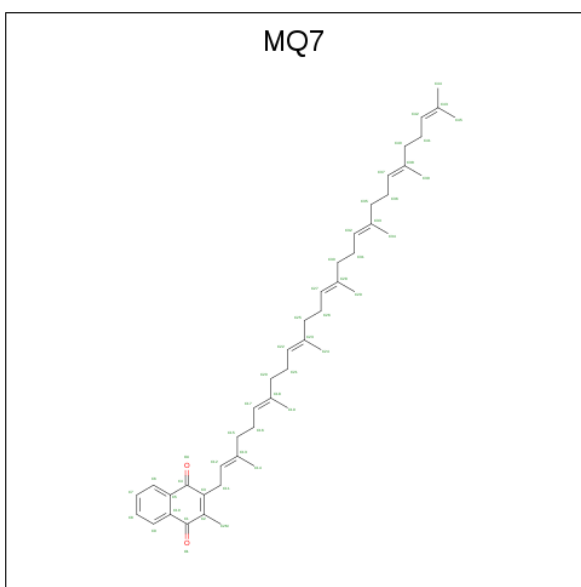


Mol	Chain	Residues	Atoms				ZeroOcc	AltConf
11	L	1	Total	C	N	O	0	1
			130	110	8	12		
11	L	1	Total	C	N	O	0	0
			65	55	4	6		

- Molecule 12 is FE (III) ION (three-letter code: FE) (formula: Fe).

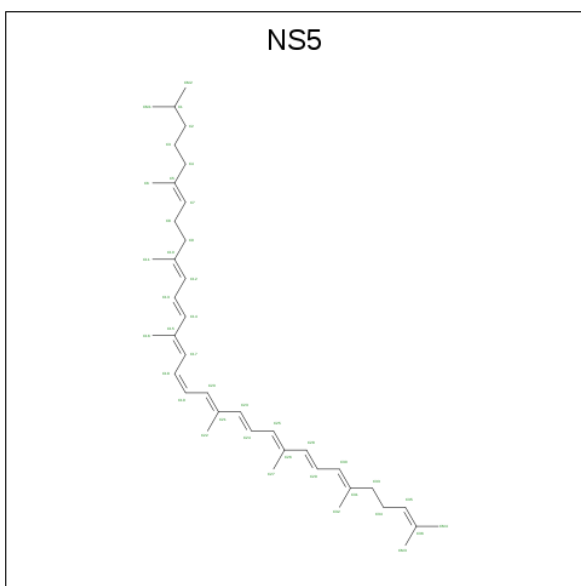
Mol	Chain	Residues	Atoms		ZeroOcc	AltConf
12	M	1	Total	Fe	0	1
			2	2		

- Molecule 13 is MENAQUINONE-7 (three-letter code: MQ7) (formula: C₄₆H₆₄O₂) (labeled as "Ligand of Interest" by author).



Mol	Chain	Residues	Atoms			ZeroOcc	AltConf
13	M	1	Total	C	O	0	1
			96	92	4		

- Molecule 14 is 15-cis-1,2-dihydroneurosporene (three-letter code: NS5) (formula: C₄₀H₆₀).



Mol	Chain	Residues	Atoms		ZeroOcc	AltConf
14	M	1	Total	C	0	0
			40	40		

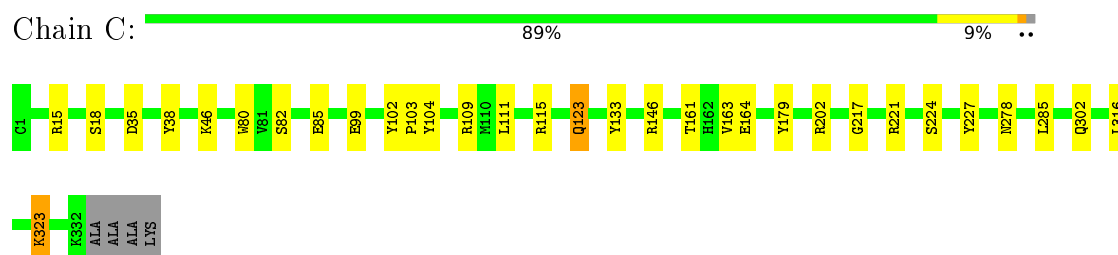
- Molecule 15 is water.

Mol	Chain	Residues	Atoms		ZeroOcc	AltConf
15	C	56	Total 56	O 56	0	0
15	H	27	Total 27	O 27	0	0
15	L	24	Total 24	O 24	0	0
15	M	39	Total 39	O 39	0	0

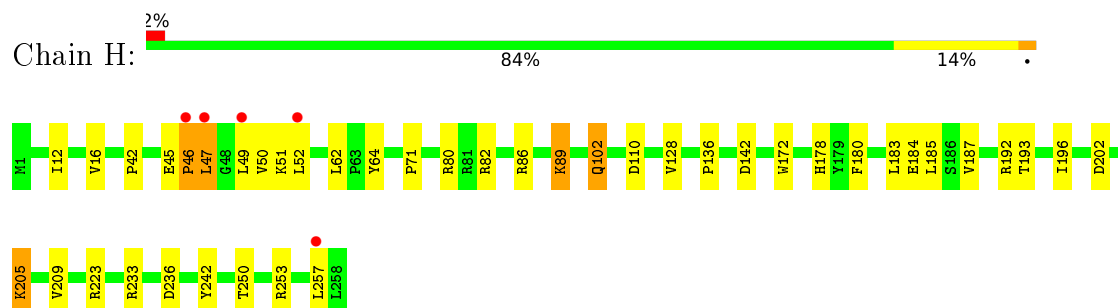
3 Residue-property plots

These plots are drawn for all protein, RNA, DNA and oligosaccharide chains in the entry. The first graphic for a chain summarises the proportions of the various outlier classes displayed in the second graphic. The second graphic shows the sequence view annotated by issues in geometry and electron density. Residues are color-coded according to the number of geometric quality criteria for which they contain at least one outlier: green = 0, yellow = 1, orange = 2 and red = 3 or more. A red dot above a residue indicates a poor fit to the electron density ($RSRZ > 2$). Stretches of 2 or more consecutive residues without any outlier are shown as a green connector. Residues present in the sample, but not in the model, are shown in grey.

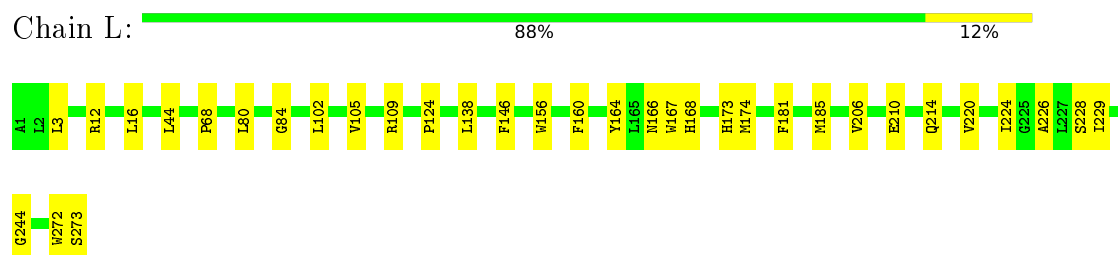
- Molecule 1: Photosynthetic reaction center cytochrome c subunit



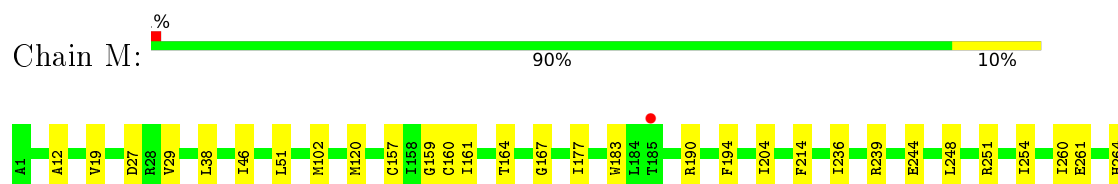
- Molecule 2: Reaction center protein H chain

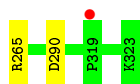


- Molecule 3: Reaction center protein L chain



- Molecule 4: Reaction center protein M chain





4 Data and refinement statistics

Property	Value	Source
Space group	P 43 21 2	Depositor
Cell constants a, b, c, α , β , γ	226.50 Å 226.50 Å 113.90 Å 90.00° 90.00° 90.00°	Depositor
Resolution (Å)	34.31 – 2.80 34.31 – 2.38	Depositor EDS
% Data completeness (in resolution range)	100.0 (34.31-2.80) 98.5 (34.31-2.38)	Depositor EDS
R_{merge}	(Not available)	Depositor
R_{sym}	(Not available)	Depositor
$\langle I/\sigma(I) \rangle$ ¹	2.58 (at 2.36 Å)	Xtriage
Refinement program	REFMAC 5.8.0158, PHENIX 1.17.1_3660	Depositor
R, R_{free}	0.160 , 0.154 0.162 , 0.157	Depositor DCC
R_{free} test set	5919 reflections (5.06%)	wwPDB-VP
Wilson B-factor (Å ²)	77.4	Xtriage
Anisotropy	0.187	Xtriage
Bulk solvent k_{sol} (e/Å ³), B_{sol} (Å ²)	0.29 , 71.7	EDS
L-test for twinning ²	$\langle L \rangle = 0.46$, $\langle L^2 \rangle = 0.29$	Xtriage
Estimated twinning fraction	No twinning to report.	Xtriage
F_o, F_c correlation	0.97	EDS
Total number of atoms	11472	wwPDB-VP
Average B, all atoms (Å ²)	84.0	wwPDB-VP

Xtriage's analysis on translational NCS is as follows: *The largest off-origin peak in the Patterson function is 1.77% of the height of the origin peak. No significant pseudotranslation is detected.*

¹Intensities estimated from amplitudes.

²Theoretical values of $\langle |L| \rangle$, $\langle L^2 \rangle$ for acentric reflections are 0.5, 0.333 respectively for untwinned datasets, and 0.375, 0.2 for perfectly twinned datasets.

5 Model quality [i](#)

5.1 Standard geometry [i](#)

Bond lengths and bond angles in the following residue types are not validated in this section: LDA, DGA, HTO, BCB, BPB, FE, MQ7, HEC, FME, NS5, SO4

The Z score for a bond length (or angle) is the number of standard deviations the observed value is removed from the expected value. A bond length (or angle) with $|Z| > 5$ is considered an outlier worth inspection. RMSZ is the root-mean-square of all Z scores of the bond lengths (or angles).

Mol	Chain	Bond lengths		Bond angles	
		RMSZ	# Z >5	RMSZ	# Z >5
1	C	0.42	0/2669	0.57	0/3637
2	H	0.43	0/2055	0.60	0/2807
3	L	0.43	0/2612	0.56	0/3568
4	M	0.45	0/3101	0.55	0/4242
All	All	0.43	0/10437	0.57	0/14254

There are no bond length outliers.

There are no bond angle outliers.

There are no chirality outliers.

There are no planarity outliers.

5.2 Too-close contacts [i](#)

In the following table, the Non-H and H(model) columns list the number of non-hydrogen atoms and hydrogen atoms in the chain respectively. The H(added) column lists the number of hydrogen atoms added and optimized by MolProbity. The Clashes column lists the number of clashes within the asymmetric unit, whereas Symm-Clashes lists symmetry related clashes.

Mol	Chain	Non-H	H(model)	H(added)	Clashes	Symm-Clashes
1	C	2602	0	2578	25	0
2	H	2018	0	2020	34	0
3	L	2508	0	2390	35	0
4	M	2977	0	2832	25	0
5	C	172	0	120	4	0
6	C	37	0	58	0	0
7	C	15	0	0	0	0
7	H	25	0	0	0	0
7	M	35	0	0	2	0

Continued on next page...

Continued from previous page...

Mol	Chain	Non-H	H(model)	H(added)	Clashes	Symm-Clashes
8	H	48	0	93	4	0
8	L	32	0	62	2	0
8	M	32	0	62	0	0
9	H	20	0	32	0	0
9	L	10	0	16	0	0
10	L	330	0	360	15	0
10	M	132	0	144	6	0
11	L	195	0	222	14	0
12	M	2	0	0	0	0
13	M	96	0	128	1	0
14	M	40	0	60	2	0
15	C	56	0	0	0	0
15	H	27	0	0	0	0
15	L	24	0	0	0	0
15	M	39	0	0	0	0
All	All	11472	0	11177	126	0

The all-atom clashscore is defined as the number of clashes found per 1000 atoms (including hydrogen atoms). The all-atom clashscore for this structure is 6.

The worst 5 of 126 close contacts within the same asymmetric unit are listed below, sorted by their clash magnitude.

Atom-1	Atom-2	Interatomic distance (Å)	Clash overlap (Å)
2:H:205:LYS:HD3	2:H:205:LYS:H	1.46	0.80
4:M:160:CYS:O	4:M:164:THR:HG23	1.82	0.78
1:C:161:THR:HG21	3:L:273:SER:O	1.83	0.78
2:H:184:GLU:OE2	2:H:193:THR:HG21	1.83	0.77
11:L:305:BPB:HBBB	11:L:305:BPB:HHC	1.67	0.77

There are no symmetry-related clashes.

5.3 Torsion angles [i](#)

5.3.1 Protein backbone [i](#)

In the following table, the Percentiles column shows the percent Ramachandran outliers of the chain as a percentile score with respect to all X-ray entries followed by that with respect to entries of similar resolution.

The Analysed column shows the number of residues for which the backbone conformation was analysed, and the total number of residues.

Mol	Chain	Analysed	Favoured	Allowed	Outliers	Percentiles	
1	C	330/336 (98%)	320 (97%)	10 (3%)	0	100	100
2	H	256/258 (99%)	248 (97%)	5 (2%)	3 (1%)	13	39
3	L	312/273 (114%)	300 (96%)	12 (4%)	0	100	100
4	M	372/323 (115%)	358 (96%)	13 (4%)	1 (0%)	41	72
All	All	1270/1190 (107%)	1226 (96%)	40 (3%)	4 (0%)	41	72

All (4) Ramachandran outliers are listed below:

Mol	Chain	Res	Type
4	M	177	ILE
2	H	46	PRO
2	H	47	LEU
2	H	50	VAL

5.3.2 Protein sidechains ⓘ

In the following table, the Percentiles column shows the percent sidechain outliers of the chain as a percentile score with respect to all X-ray entries followed by that with respect to entries of similar resolution.

The Analysed column shows the number of residues for which the sidechain conformation was analysed, and the total number of residues.

Mol	Chain	Analysed	Rotameric	Outliers	Percentiles	
1	C	281/282 (100%)	277 (99%)	4 (1%)	67	90
2	H	212/212 (100%)	202 (95%)	10 (5%)	26	59
3	L	253/218 (116%)	250 (99%)	3 (1%)	71	92
4	M	288/249 (116%)	282 (98%)	6 (2%)	53	84
All	All	1034/961 (108%)	1011 (98%)	23 (2%)	53	83

5 of 23 residues with a non-rotameric sidechain are listed below:

Mol	Chain	Res	Type
2	H	205	LYS
2	H	233	ARG
4	M	214[B]	PHE
2	H	223	ARG
2	H	236	ASP

Some sidechains can be flipped to improve hydrogen bonding and reduce clashes. All (5) such

sidechains are listed below:

Mol	Chain	Res	Type
1	C	120	ASN
1	C	123	GLN
1	C	302	GLN
1	C	310	GLN
2	H	102	GLN

5.3.3 RNA ⓘ

There are no RNA molecules in this entry.

5.4 Non-standard residues in protein, DNA, RNA chains ⓘ

1 non-standard protein/DNA/RNA residue is modelled in this entry.

In the following table, the Counts columns list the number of bonds (or angles) for which Mogul statistics could be retrieved, the number of bonds (or angles) that are observed in the model and the number of bonds (or angles) that are defined in the Chemical Component Dictionary. The Link column lists molecule types, if any, to which the group is linked. The Z score for a bond length (or angle) is the number of standard deviations the observed value is removed from the expected value. A bond length (or angle) with $|Z| > 2$ is considered an outlier worth inspection. RMSZ is the root-mean-square of all Z scores of the bond lengths (or angles).

Mol	Type	Chain	Res	Link	Bond lengths			Bond angles		
					Counts	RMSZ	$\# Z > 2$	Counts	RMSZ	$\# Z > 2$
2	FME	H	1	2	8,9,10	0.98	0	7,9,11	1.08	0

In the following table, the Chirals column lists the number of chiral outliers, the number of chiral centers analysed, the number of these observed in the model and the number defined in the Chemical Component Dictionary. Similar counts are reported in the Torsion and Rings columns. '-' means no outliers of that kind were identified.

Mol	Type	Chain	Res	Link	Chirals	Torsions	Rings
2	FME	H	1	2	-	1/7/9/11	-

There are no bond length outliers.

There are no bond angle outliers.

There are no chirality outliers.

All (1) torsion outliers are listed below:

Mol	Chain	Res	Type	Atoms
2	H	1	FME	CA-CB-CG-SD

There are no ring outliers.

No monomer is involved in short contacts.

5.5 Carbohydrates [i](#)

There are no monosaccharides in this entry.

5.6 Ligand geometry [i](#)

Of 45 ligands modelled in this entry, 2 are monoatomic - leaving 43 for Mogul analysis.

In the following table, the Counts columns list the number of bonds (or angles) for which Mogul statistics could be retrieved, the number of bonds (or angles) that are observed in the model and the number of bonds (or angles) that are defined in the Chemical Component Dictionary. The Link column lists molecule types, if any, to which the group is linked. The Z score for a bond length (or angle) is the number of standard deviations the observed value is removed from the expected value. A bond length (or angle) with $|Z| > 2$ is considered an outlier worth inspection. RMSZ is the root-mean-square of all Z scores of the bond lengths (or angles).

Mol	Type	Chain	Res	Link	Bond lengths			Bond angles		
					Counts	RMSZ	$\# Z > 2$	Counts	RMSZ	$\# Z > 2$
10	BCB	M	403[B]	-	60,74,74	2.80	20 (33%)	48,115,115	2.39	14 (29%)
5	HEC	C	402	1	26,50,50	1.51	3 (11%)	18,82,82	2.22	8 (44%)
7	SO4	H	706	-	4,4,4	0.18	0	6,6,6	0.09	0
7	SO4	M	409	-	4,4,4	0.15	0	6,6,6	0.18	0
8	LDA	L	307	-	12,15,15	0.39	0	14,17,17	0.64	0
9	HTO	H	710	-	9,9,9	0.85	0	10,10,10	1.04	1 (10%)
8	LDA	L	306	-	12,15,15	0.39	0	14,17,17	0.70	0
7	SO4	H	704	-	4,4,4	0.12	0	6,6,6	0.16	0
10	BCB	L	301[B]	-	60,74,74	2.78	21 (35%)	48,115,115	2.27	13 (27%)
13	MQ7	M	402[A]	-	49,49,49	1.53	2 (4%)	60,63,63	1.56	14 (23%)
5	HEC	C	403	1	26,50,50	1.53	4 (15%)	18,82,82	1.93	8 (44%)
14	NS5	M	404	-	39,39,39	1.39	2 (5%)	44,46,46	2.04	14 (31%)
9	HTO	L	308	-	9,9,9	0.72	0	10,10,10	1.20	1 (10%)
11	BPB	L	305	-	64,70,70	2.18	16 (25%)	64,101,101	1.89	14 (21%)
8	LDA	H	707	-	12,15,15	0.36	0	14,17,17	0.82	0
7	SO4	M	410	-	4,4,4	0.28	0	6,6,6	0.33	0
5	HEC	C	404	1	26,50,50	1.58	3 (11%)	18,82,82	1.95	7 (38%)

Mol	Type	Chain	Res	Link	Bond lengths			Bond angles		
					Counts	RMSZ	# Z > 2	Counts	RMSZ	# Z > 2
8	LDA	H	708	-	12,15,15	0.27	0	14,17,17	0.84	0
5	HEC	C	401	1	26,50,50	1.64	4 (15%)	18,82,82	2.71	6 (33%)
8	LDA	H	701	-	12,15,15	0.36	0	14,17,17	0.76	0
8	LDA	M	412	-	12,15,15	0.42	0	14,17,17	0.55	0
7	SO4	H	705	-	4,4,4	0.27	0	6,6,6	0.36	0
7	SO4	H	702	-	4,4,4	0.23	0	6,6,6	0.33	0
10	BCB	L	304	-	60,74,74	2.70	20 (33%)	48,115,115	2.30	14 (29%)
13	MQ7	M	402[B]	-	49,49,49	1.50	2 (4%)	60,63,63	1.48	11 (18%)
7	SO4	H	703	-	4,4,4	0.22	0	6,6,6	0.12	0
10	BCB	L	302[B]	-	60,74,74	2.82	21 (35%)	48,115,115	2.21	16 (33%)
11	BPB	L	303[A]	-	64,70,70	2.11	16 (25%)	64,101,101	1.97	18 (28%)
7	SO4	M	407	-	4,4,4	0.14	0	6,6,6	0.25	0
11	BPB	L	303[B]	-	64,70,70	2.08	15 (23%)	64,101,101	2.02	17 (26%)
10	BCB	L	301[A]	-	60,74,74	2.81	19 (31%)	48,115,115	2.30	16 (33%)
10	BCB	L	302[A]	-	60,74,74	2.75	20 (33%)	48,115,115	2.34	17 (35%)
7	SO4	C	408	-	4,4,4	0.16	0	6,6,6	0.11	0
7	SO4	C	406	-	4,4,4	0.25	0	6,6,6	0.39	0
10	BCB	M	403[A]	-	60,74,74	2.81	20 (33%)	48,115,115	2.32	16 (33%)
6	DGA	C	405	1	36,36,43	1.18	3 (8%)	38,38,45	1.17	3 (7%)
7	SO4	M	405	-	4,4,4	0.11	0	6,6,6	0.26	0
7	SO4	M	411	-	4,4,4	0.25	0	6,6,6	0.21	0
7	SO4	C	407	-	4,4,4	0.16	0	6,6,6	0.14	0
7	SO4	M	406	-	4,4,4	0.16	0	6,6,6	0.17	0
9	HTO	H	709	-	9,9,9	0.85	0	10,10,10	0.59	0
7	SO4	M	408	-	4,4,4	0.30	0	6,6,6	0.27	0
8	LDA	M	413	-	12,15,15	0.48	0	14,17,17	0.52	0

In the following table, the Chirals column lists the number of chiral outliers, the number of chiral centers analysed, the number of these observed in the model and the number defined in the Chemical Component Dictionary. Similar counts are reported in the Torsion and Rings columns. '-' means no outliers of that kind were identified.

Mol	Type	Chain	Res	Link	Chirals	Torsions	Rings
10	BCB	M	403[B]	-	-	18/41/177/177	-
5	HEC	C	402	1	-	1/6/54/54	-
8	LDA	L	307	-	-	10/13/13/13	-
9	HTO	H	710	-	-	0/10/10/10	-
8	LDA	L	306	-	-	5/13/13/13	-
13	MQ7	M	402[A]	-	-	0/41/61/61	0/2/2/2

Continued on next page...

Continued from previous page...

Mol	Type	Chain	Res	Link	Chirals	Torsions	Rings
10	BCB	L	304	-	-	15/41/177/177	-
14	NS5	M	404	-	-	10/43/43/43	-
9	HTO	L	308	-	-	4/10/10/10	-
11	BPB	L	305	-	-	8/47/105/105	0/5/6/6
8	LDA	H	707	-	-	6/13/13/13	-
5	HEC	C	404	1	-	0/6/54/54	-
8	LDA	H	708	-	-	7/13/13/13	-
10	BCB	L	302[B]	-	-	12/41/177/177	-
8	LDA	H	701	-	-	3/13/13/13	-
8	LDA	M	412	-	-	4/13/13/13	-
5	HEC	C	403	1	-	0/6/54/54	-
13	MQ7	M	402[B]	-	-	1/41/61/61	0/2/2/2
8	LDA	M	413	-	-	4/13/13/13	-
5	HEC	C	401	1	-	0/6/54/54	-
11	BPB	L	303[A]	-	-	6/47/105/105	0/5/6/6
11	BPB	L	303[B]	-	-	10/47/105/105	0/5/6/6
10	BCB	L	302[A]	-	-	10/41/177/177	-
10	BCB	M	403[A]	-	-	14/41/177/177	-
6	DGA	C	405	1	-	15/37/37/45	-
10	BCB	L	301[A]	-	-	12/41/177/177	-
10	BCB	L	301[B]	-	-	9/41/177/177	-
9	HTO	H	709	-	-	4/10/10/10	-

The worst 5 of 211 bond length outliers are listed below:

Mol	Chain	Res	Type	Atoms	Z	Observed(Å)	Ideal(Å)
13	M	402[A]	MQ7	C3-C2	8.56	1.50	1.35
10	M	403[A]	BCB	CHB-C4A	-8.48	1.33	1.52
10	L	302[B]	BCB	CHB-C4A	-8.43	1.33	1.52
10	L	301[B]	BCB	CHB-C4A	-8.42	1.33	1.52
10	L	301[A]	BCB	CHB-C4A	-8.40	1.33	1.52

The worst 5 of 228 bond angle outliers are listed below:

Mol	Chain	Res	Type	Atoms	Z	Observed(°)	Ideal(°)
10	M	403[A]	BCB	CMB-C2B-C3B	7.81	133.68	114.29
10	L	301[A]	BCB	CMB-C2B-C3B	7.73	133.48	114.29
10	M	403[B]	BCB	CMB-C2B-C3B	7.49	132.90	114.29

Continued on next page...

Continued from previous page...

Mol	Chain	Res	Type	Atoms	Z	Observed(°)	Ideal(°)
10	L	301[B]	BCB	CMB-C2B-C3B	7.46	132.83	114.29
10	L	302[B]	BCB	CMB-C2B-C3B	7.29	132.40	114.29

There are no chirality outliers.

5 of 188 torsion outliers are listed below:

Mol	Chain	Res	Type	Atoms
10	M	403[B]	BCB	C2B-C3B-CAB-OBB
10	M	403[B]	BCB	C2B-C3B-CAB-CBB
10	M	403[B]	BCB	CAD-CBD-CGD-O1D
10	M	403[B]	BCB	CAD-CBD-CGD-O2D
8	L	307	LDA	C2-C1-N1-O1

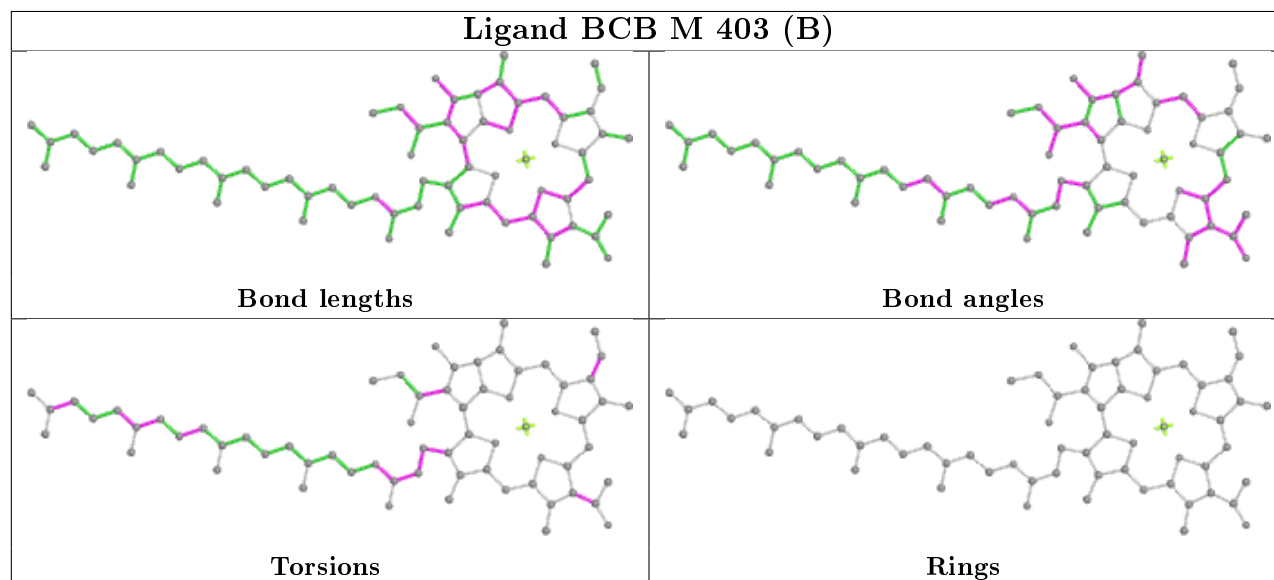
There are no ring outliers.

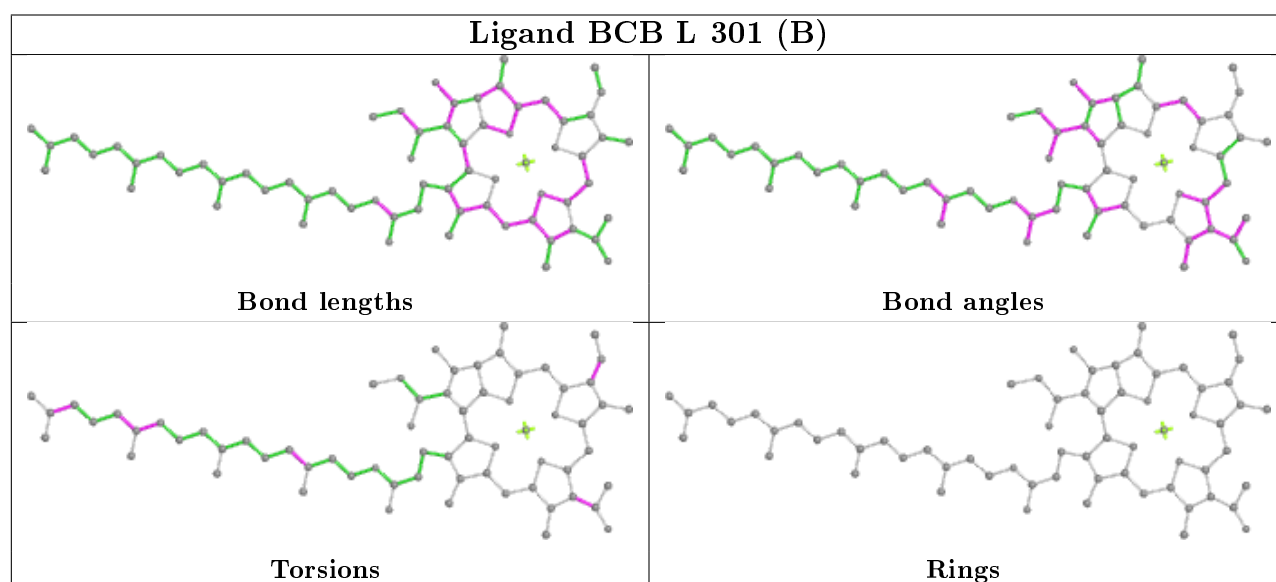
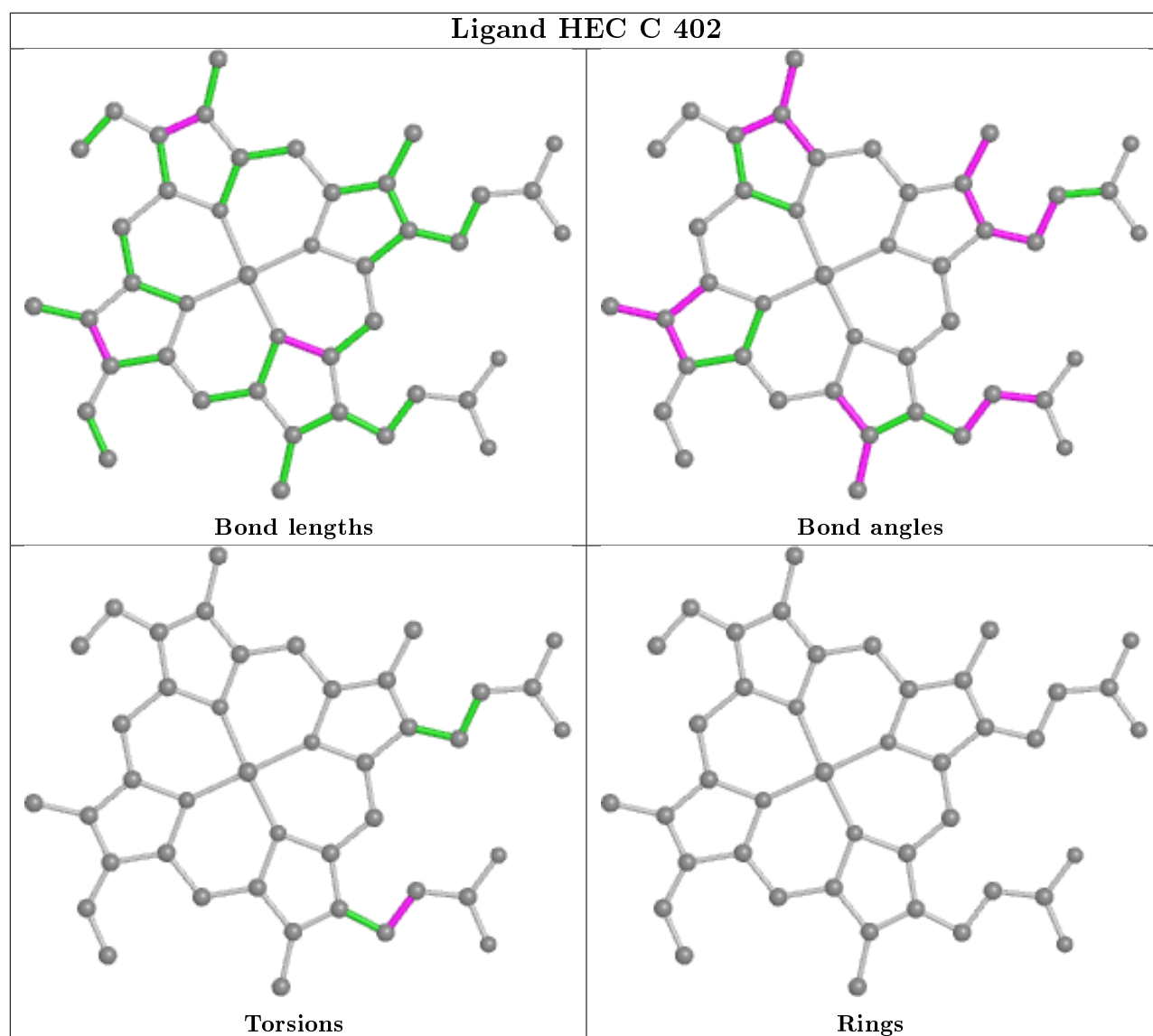
19 monomers are involved in 43 short contacts:

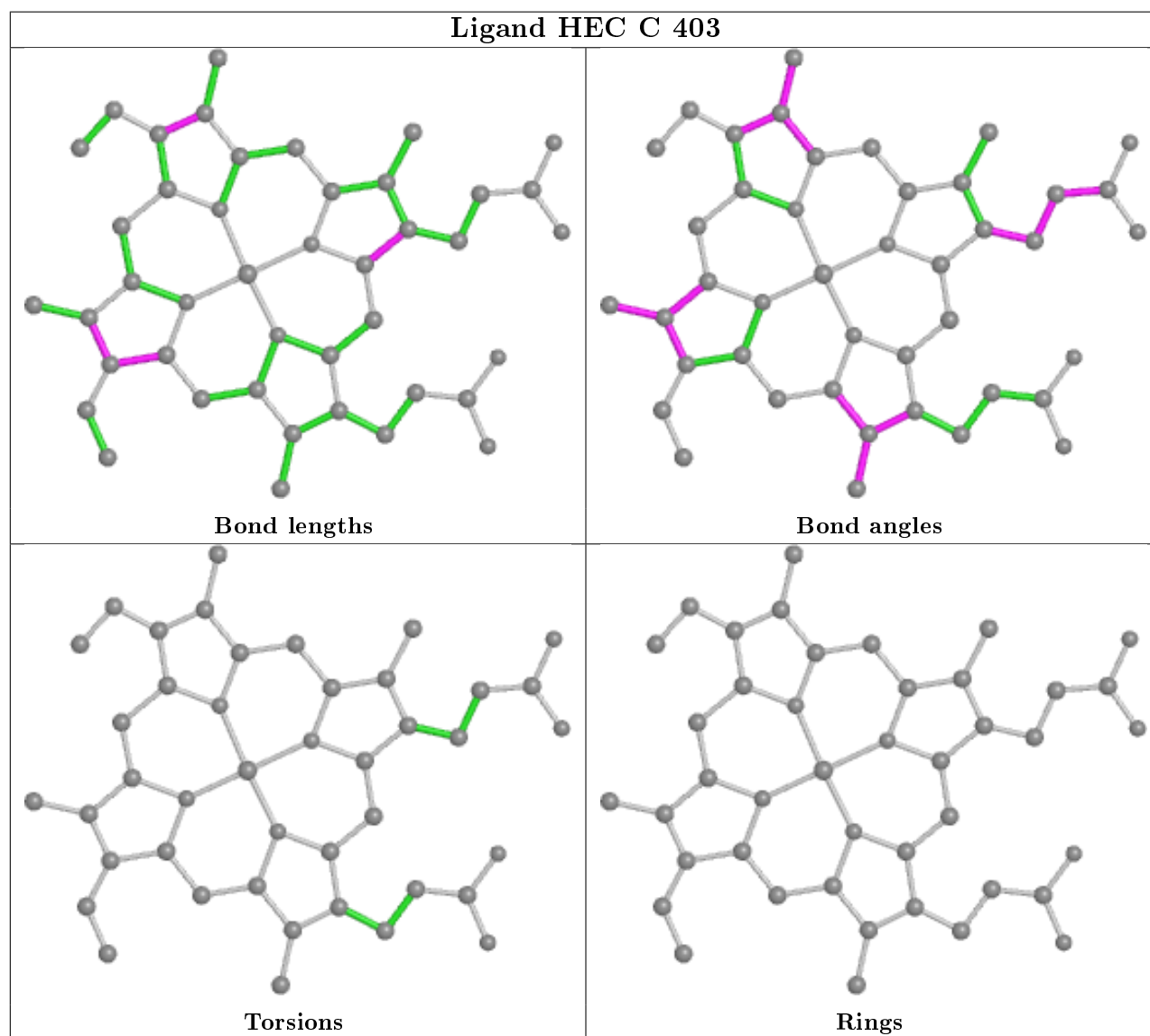
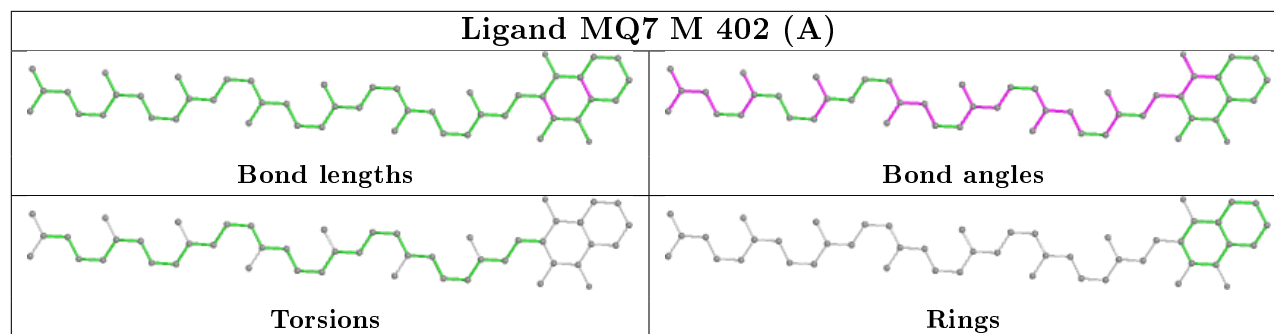
Mol	Chain	Res	Type	Clashes	Symm-Clashes
10	M	403[B]	BCB	5	0
5	C	402	HEC	1	0
8	L	306	LDA	2	0
10	L	301[B]	BCB	2	0
5	C	403	HEC	2	0
14	M	404	NS5	2	0
11	L	305	BPB	6	0
5	C	404	HEC	1	0
8	H	708	LDA	3	0
5	C	401	HEC	1	0
8	H	701	LDA	1	0
10	L	304	BCB	6	0
13	M	402[B]	MQ7	1	0
10	L	302[B]	BCB	3	0
11	L	303[A]	BPB	3	0
7	M	407	SO4	2	0
11	L	303[B]	BPB	5	0
10	L	301[A]	BCB	4	0
10	M	403[A]	BCB	1	0

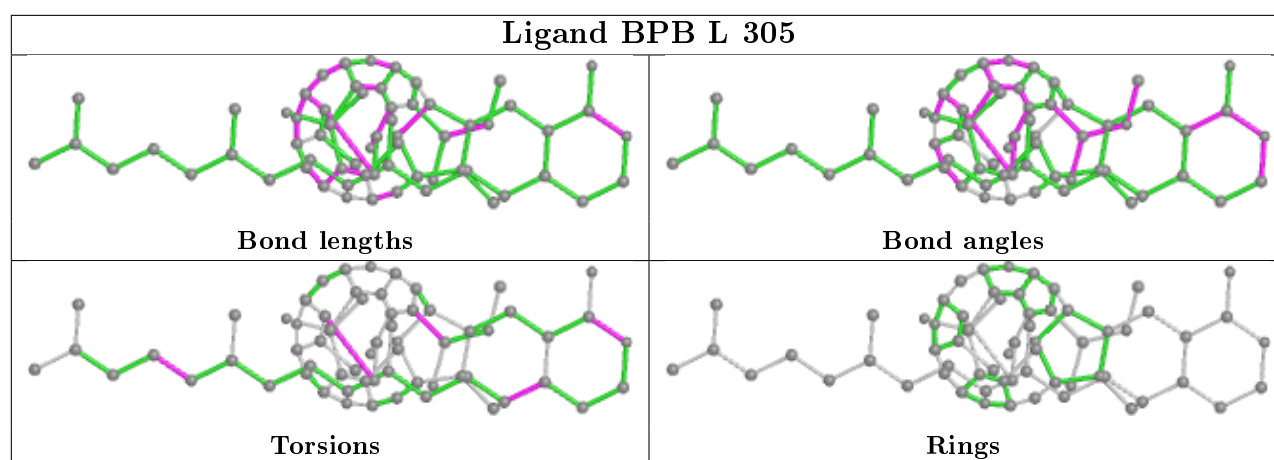
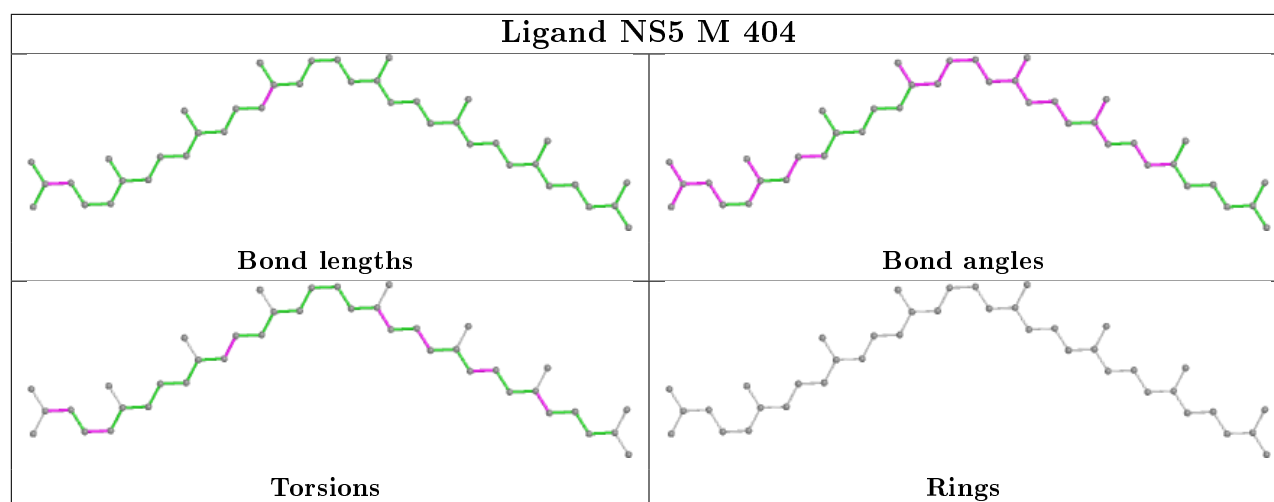
The following is a two-dimensional graphical depiction of Mogul quality analysis of bond lengths, bond angles, torsion angles, and ring geometry for all instances of the Ligand of Interest. In addition, ligands with molecular weight > 250 and outliers as shown on the validation Tables will also be included. For torsion angles, if less than 5% of the Mogul distribution of torsion angles is within 10 degrees of the torsion angle in question, then that torsion angle is considered an outlier.

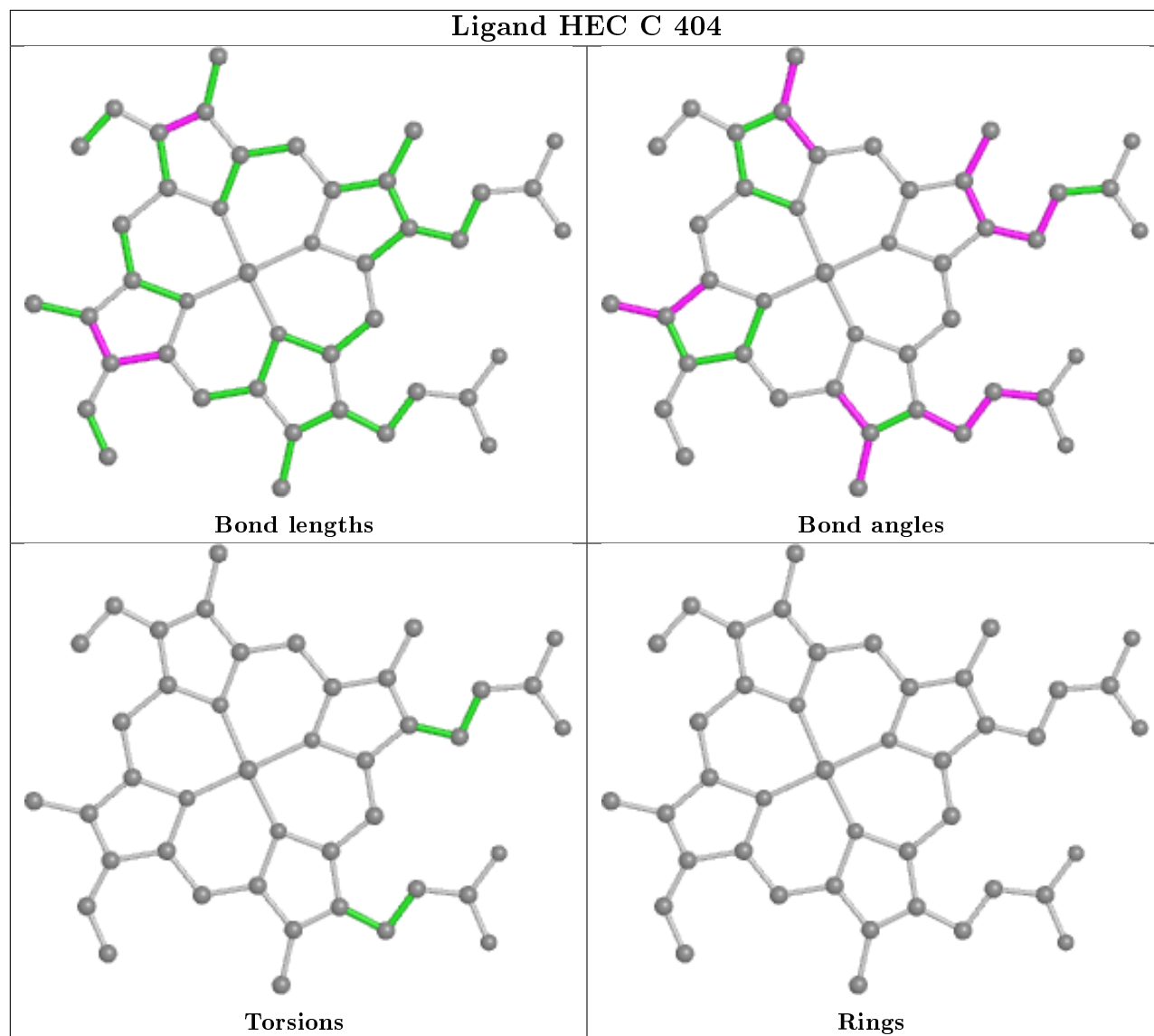
Any bond that is central to one or more torsion angles identified as an outlier by Mogul will be highlighted in the graph. For rings, the root-mean-square deviation (RMSD) between the ring in question and similar rings identified by Mogul is calculated over all ring torsion angles. If the average RMSD is greater than 60 degrees and the minimal RMSD between the ring in question and any Mogul-identified rings is also greater than 60 degrees, then that ring is considered an outlier. The outliers are highlighted in purple. The color gray indicates Mogul did not find sufficient equivalents in the CSD to analyse the geometry.

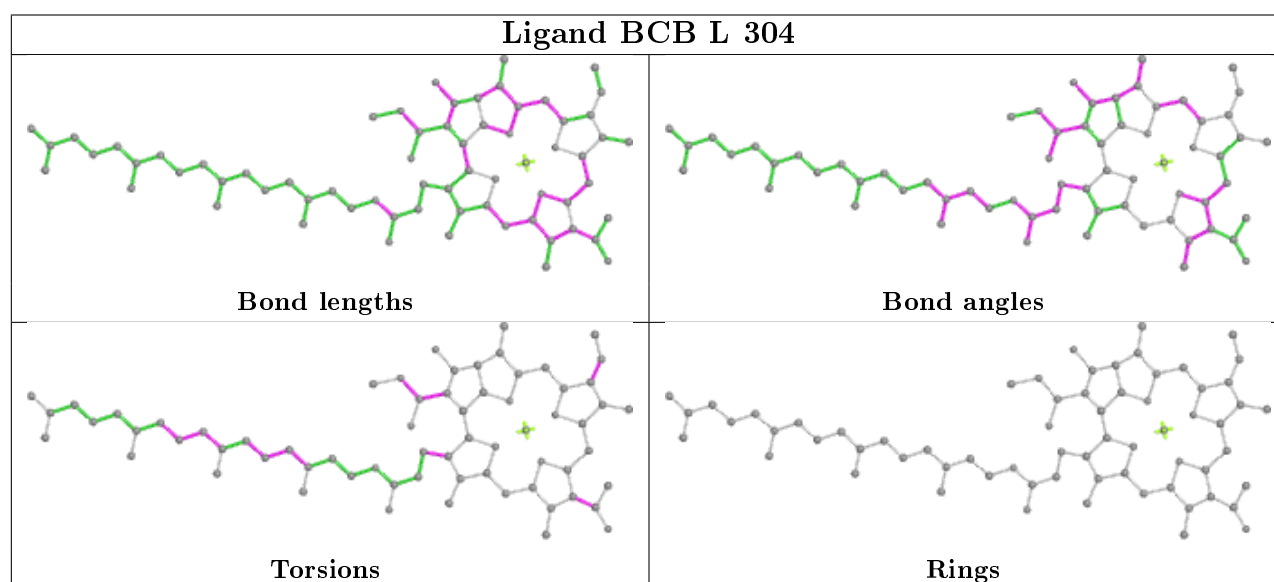
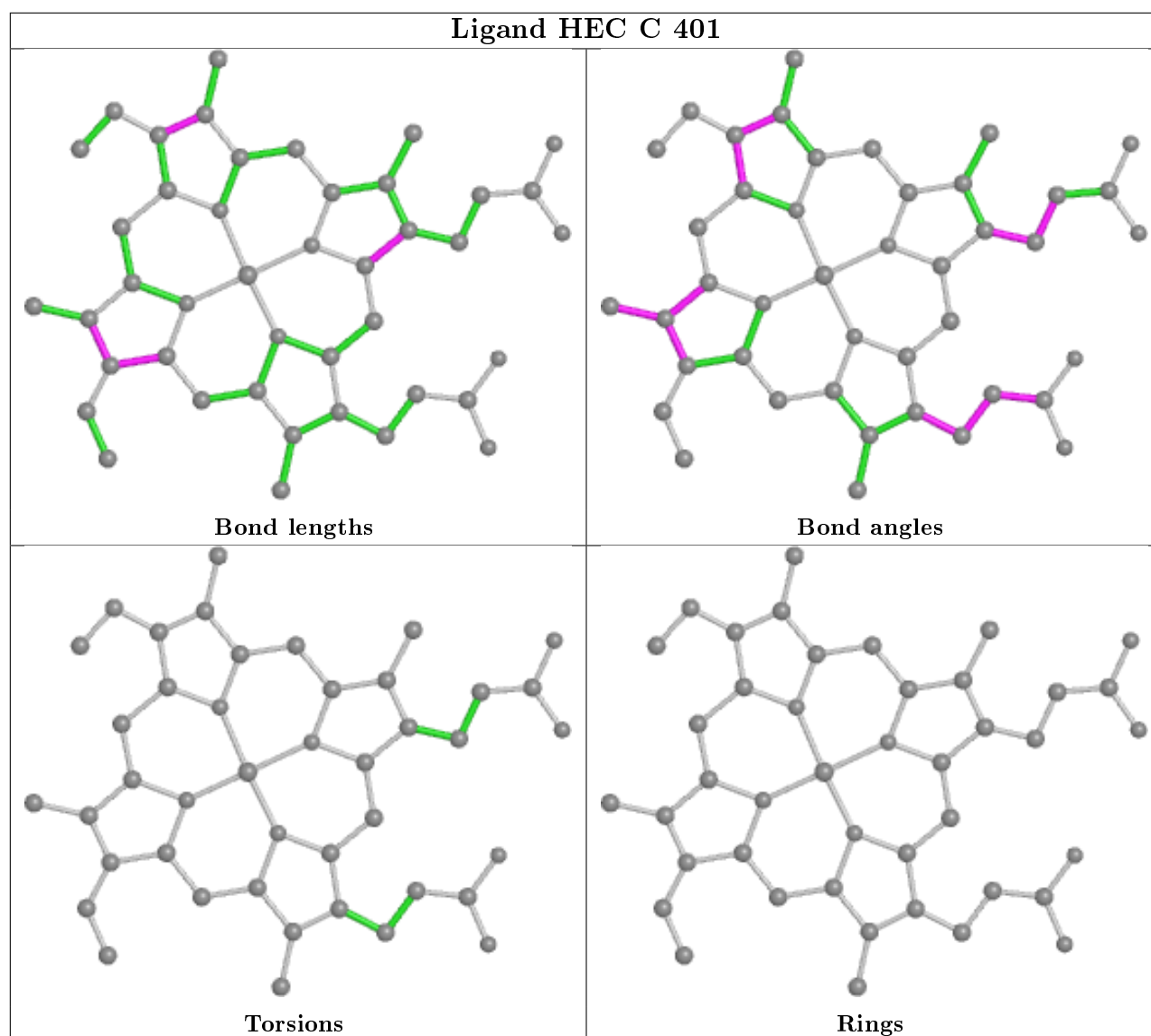


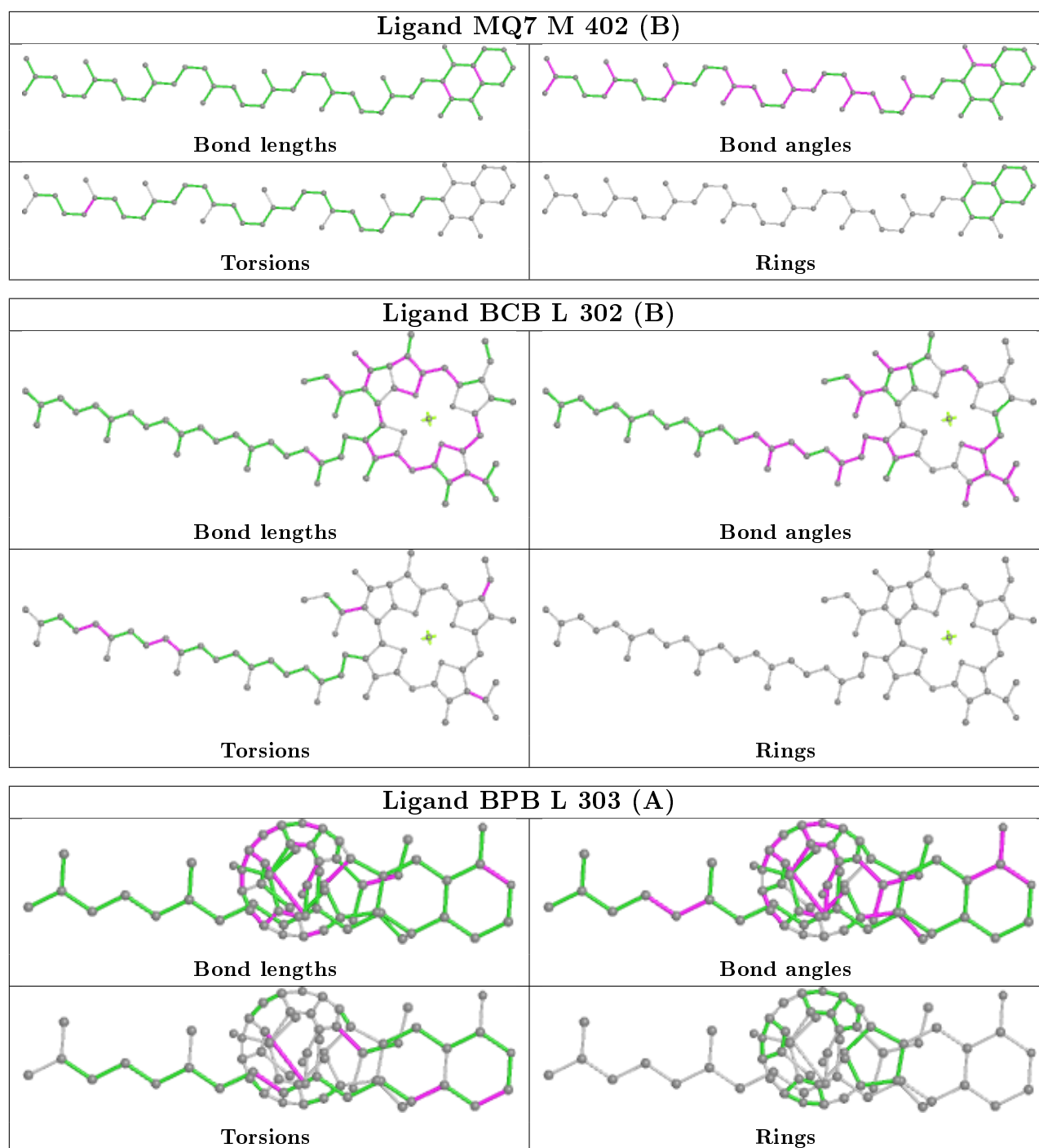


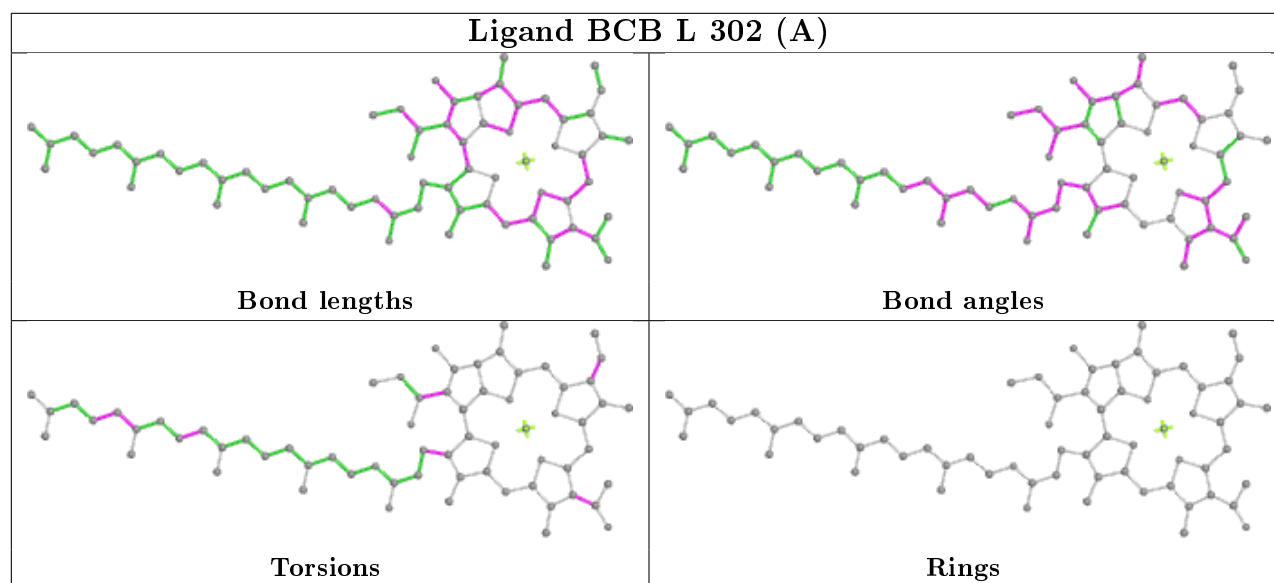
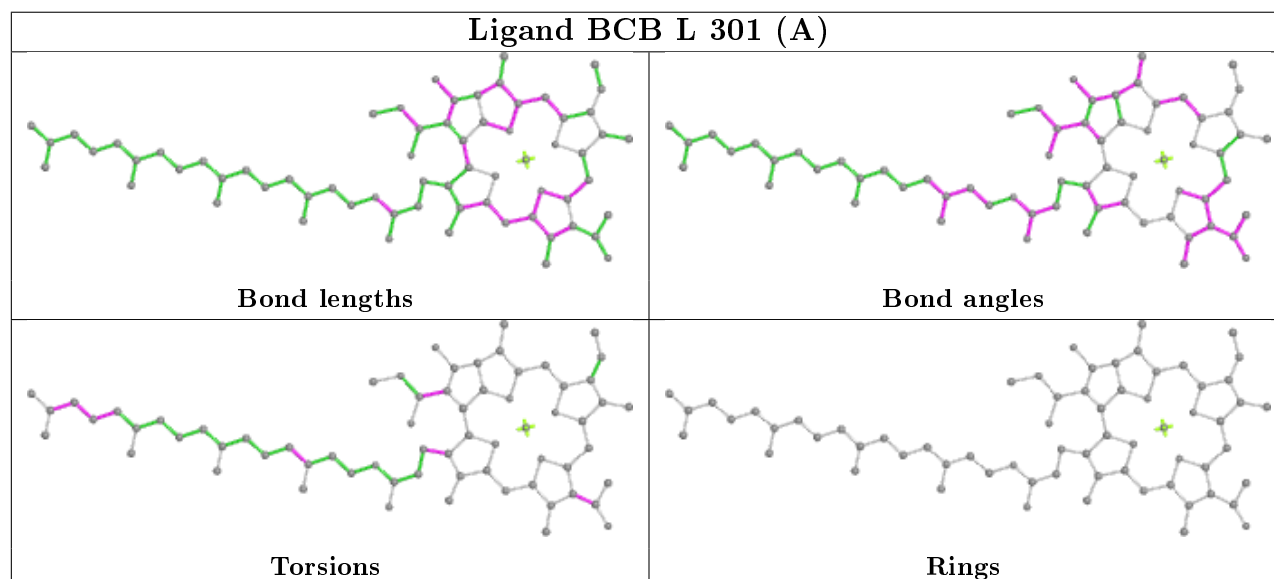
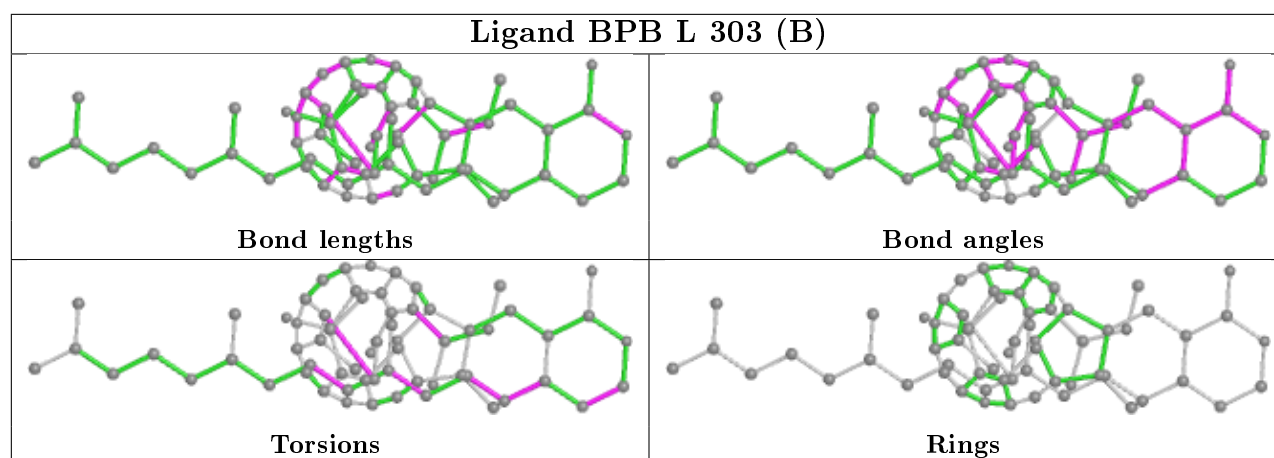


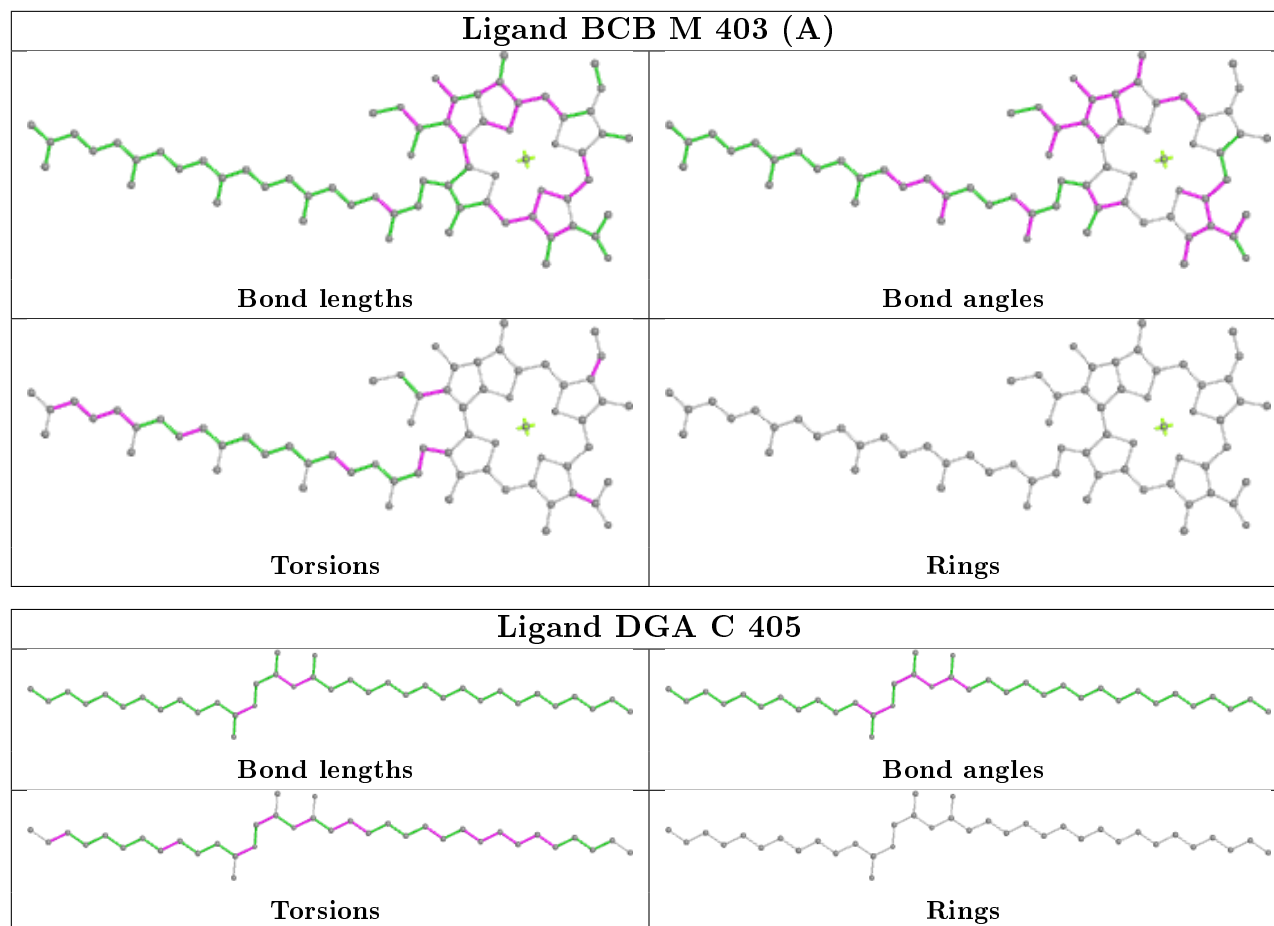












5.7 Other polymers [i](#)

There are no such residues in this entry.

5.8 Polymer linkage issues [i](#)

There are no chain breaks in this entry.

6 Fit of model and data [i](#)

6.1 Protein, DNA and RNA chains [i](#)

In the following table, the column labelled ‘#RSRZ> 2’ contains the number (and percentage) of RSRZ outliers, followed by percent RSRZ outliers for the chain as percentile scores relative to all X-ray entries and entries of similar resolution. The OWAB column contains the minimum, median, 95th percentile and maximum values of the occupancy-weighted average B-factor per residue. The column labelled ‘Q< 0.9’ lists the number of (and percentage) of residues with an average occupancy less than 0.9.

Mol	Chain	Analysed	<RSRZ>	#RSRZ>2	OWAB(Å ²)	Q<0.9
1	C	332/336 (98%)	-0.73	0 100 100	66, 81, 106, 131	0
2	H	257/258 (99%)	-0.65	5 (1%) 66 59	72, 92, 135, 172	0
3	L	273/273 (100%)	-0.83	0 100 100	66, 79, 104, 114	0
4	M	323/323 (100%)	-0.56	2 (0%) 89 86	65, 79, 105, 128	0
All	All	1185/1190 (99%)	-0.69	7 (0%) 89 86	65, 82, 113, 172	0

The worst 5 of 7 RSRZ outliers are listed below:

Mol	Chain	Res	Type	RSRZ
2	H	46	PRO	3.0
4	M	185	THR	2.7
2	H	49	LEU	2.5
2	H	52	LEU	2.4
2	H	257	LEU	2.3

6.2 Non-standard residues in protein, DNA, RNA chains [i](#)

In the following table, the Atoms column lists the number of modelled atoms in the group and the number defined in the chemical component dictionary. The B-factors column lists the minimum, median, 95th percentile and maximum values of B factors of atoms in the group. The column labelled ‘Q< 0.9’ lists the number of atoms with occupancy less than 0.9.

Mol	Type	Chain	Res	Atoms	RSCC	RSR	B-factors(Å ²)	Q<0.9
2	FME	H	1	10/11	0.97	0.11	76,92,104,112	0

6.3 Carbohydrates [i](#)

There are no monosaccharides in this entry.

6.4 Ligands ⓘ

In the following table, the Atoms column lists the number of modelled atoms in the group and the number defined in the chemical component dictionary. The B-factors column lists the minimum, median, 95th percentile and maximum values of B factors of atoms in the group. The column labelled 'Q< 0.9' lists the number of atoms with occupancy less than 0.9.

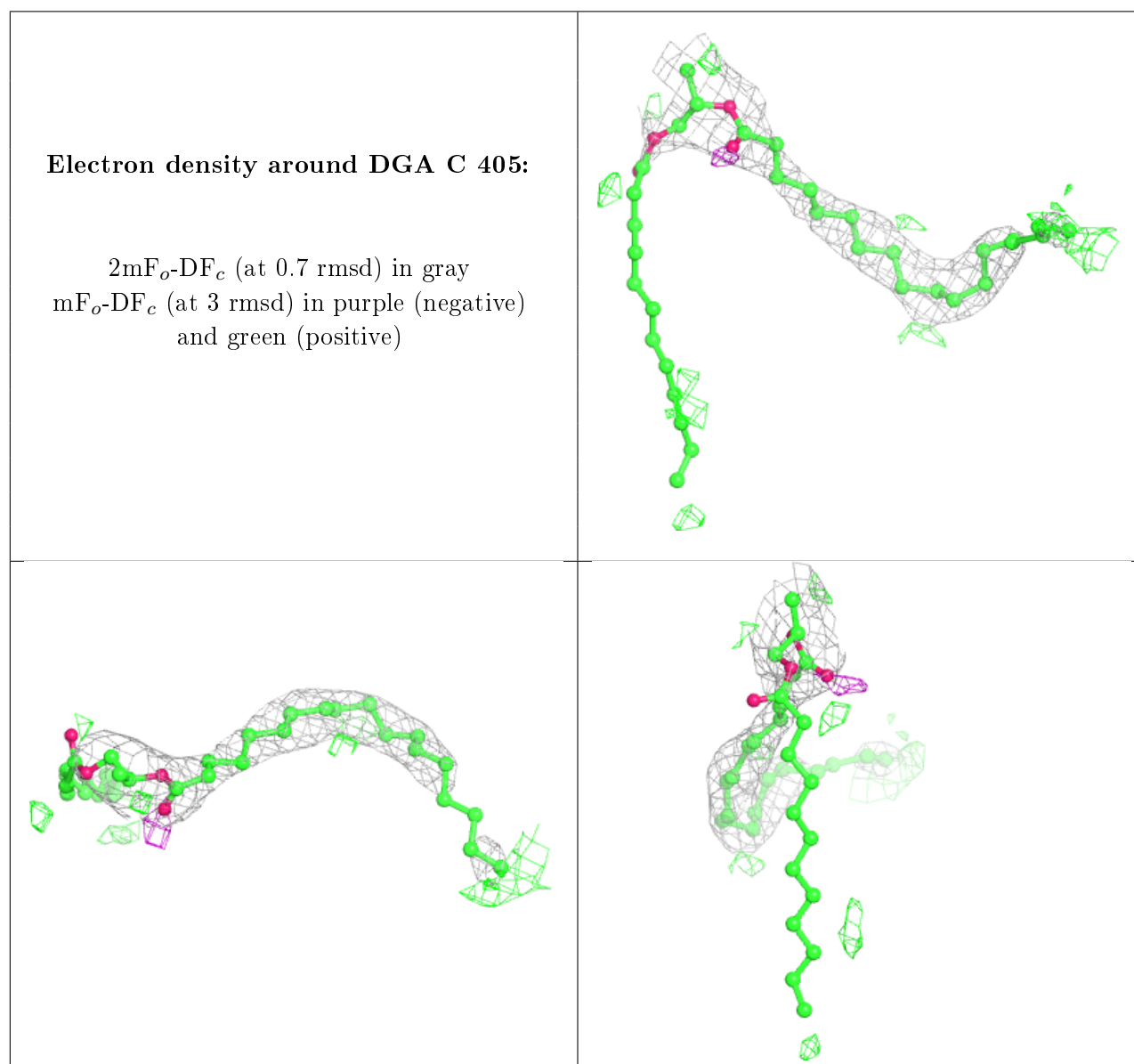
Mol	Type	Chain	Res	Atoms	RSCC	RSR	B-factors(Å ²)	Q<0.9
6	DGA	C	405	37/44	0.65	0.46	91,118,156,158	0
8	LDA	L	306	16/16	0.73	0.27	97,108,131,133	0
8	LDA	H	707	16/16	0.76	0.34	72,87,146,150	0
8	LDA	M	413	16/16	0.77	0.54	81,109,141,142	0
9	HTO	L	308	10/10	0.80	0.39	92,104,112,119	0
7	SO4	C	408	5/5	0.83	0.41	102,105,111,111	5
8	LDA	L	307	16/16	0.84	0.45	109,115,145,146	0
7	SO4	C	407	5/5	0.87	0.68	109,113,118,120	5
14	NS5	M	404	40/40	0.87	0.23	69,88,127,127	0
7	SO4	M	410	5/5	0.89	0.40	125,132,144,146	0
7	SO4	H	705	5/5	0.89	0.52	121,129,137,143	0
8	LDA	M	412	16/16	0.90	0.46	96,101,138,140	0
9	HTO	H	710	10/10	0.90	0.14	93,101,114,114	0
9	HTO	H	709	10/10	0.90	0.47	92,108,118,119	0
7	SO4	H	704	5/5	0.90	0.37	88,91,95,96	5
7	SO4	M	409	5/5	0.91	0.20	91,99,102,106	5
7	SO4	M	408	5/5	0.91	0.36	118,118,132,138	0
7	SO4	C	406	5/5	0.91	0.22	121,136,141,144	0
7	SO4	M	411	5/5	0.93	0.46	134,137,142,156	0
13	MQ7	M	402[B]	48/48	0.95	0.20	67,74,117,130	48
13	MQ7	M	402[A]	48/48	0.95	0.20	67,74,117,130	48
10	BCB	L	304	66/66	0.95	0.20	63,73,154,160	0
7	SO4	H	703	5/5	0.96	0.45	141,141,150,151	0
7	SO4	M	406	5/5	0.97	0.07	102,105,118,122	0
11	BPB	L	305	65/65	0.97	0.18	70,81,163,168	0
8	LDA	H	701	16/16	0.97	0.16	74,88,101,102	0
8	LDA	H	708	16/16	0.97	0.27	88,103,127,128	0
11	BPB	L	303[B]	65/65	0.98	0.18	65,71,81,84	65
10	BCB	L	301[B]	66/66	0.98	0.19	59,65,82,95	66
5	HEC	C	401	43/43	0.98	0.12	76,88,97,105	0
10	BCB	L	302[B]	66/66	0.98	0.17	63,68,109,112	66
10	BCB	M	403[A]	66/66	0.98	0.24	59,68,100,104	66
7	SO4	H	706	5/5	0.98	0.06	89,90,105,107	5
5	HEC	C	403	43/43	0.98	0.17	57,68,75,83	0
7	SO4	H	702	5/5	0.98	0.07	94,99,106,111	0
10	BCB	L	302[A]	66/66	0.98	0.17	63,68,109,112	66
5	HEC	C	404	43/43	0.98	0.12	65,73,91,110	0

Continued on next page...

Continued from previous page...

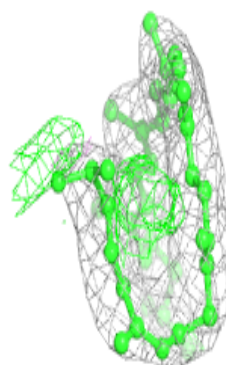
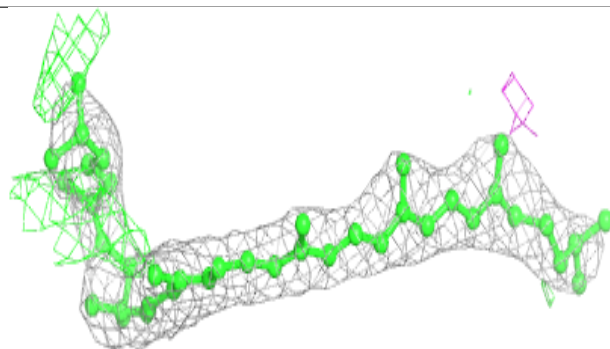
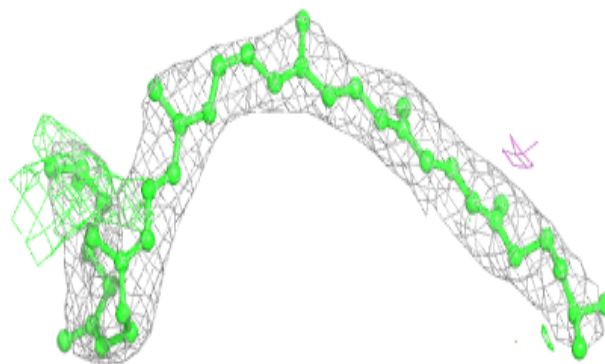
Mol	Type	Chain	Res	Atoms	RSCC	RSR	B-factors(\AA^2)	Q<0.9
10	BCB	M	403[B]	66/66	0.98	0.24	59,68,100,104	66
10	BCB	L	301[A]	66/66	0.98	0.19	59,65,82,95	66
11	BPB	L	303[A]	65/65	0.98	0.18	65,71,81,84	65
7	SO4	M	407	5/5	0.99	0.08	82,88,91,95	0
7	SO4	M	405	5/5	0.99	0.08	92,99,111,112	0
5	HEC	C	402	43/43	0.99	0.14	75,82,92,100	0
12	FE	M	401[A]	1/1	1.00	0.12	72,72,72,72	1
12	FE	M	401[B]	1/1	1.00	0.12	72,72,72,72	1

The following is a graphical depiction of the model fit to experimental electron density of all instances of the Ligand of Interest. In addition, ligands with molecular weight > 250 and outliers as shown on the geometry validation Tables will also be included. Each fit is shown from different orientation to approximate a three-dimensional view.

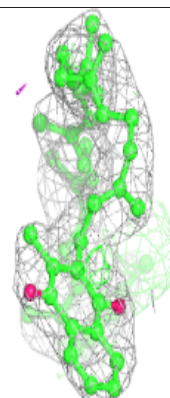
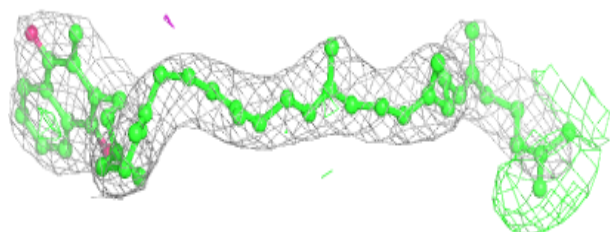
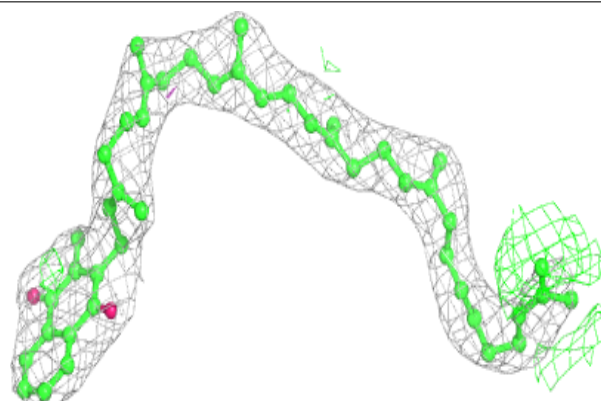


Electron density around NS5 M 404:

$2mF_o-DF_c$ (at 0.7 rmsd) in gray
 mF_o-DF_c (at 3 rmsd) in purple (negative)
and green (positive)

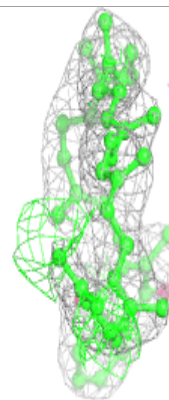
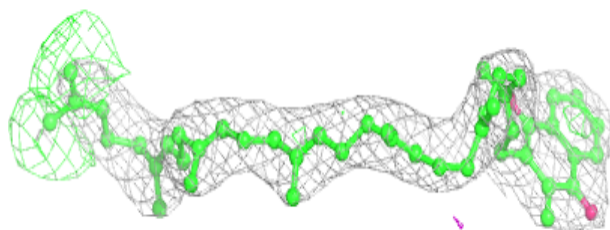
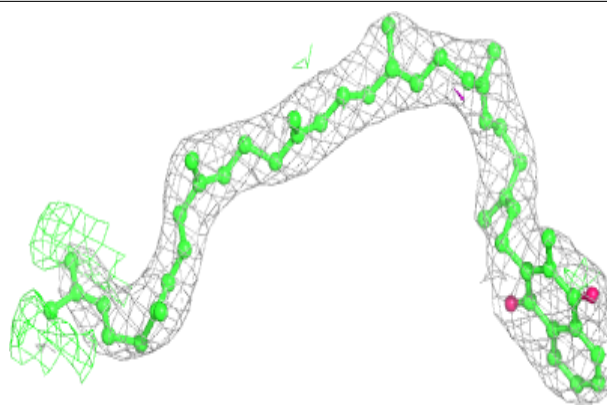
**Electron density around MQ7 M 402 (B):**

$2mF_o-DF_c$ (at 0.7 rmsd) in gray
 mF_o-DF_c (at 3 rmsd) in purple (negative)
and green (positive)

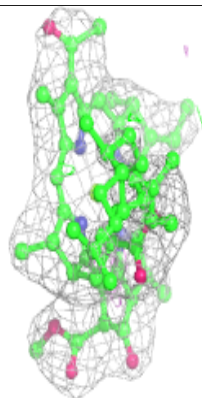
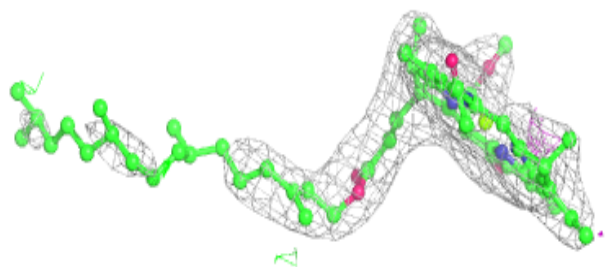
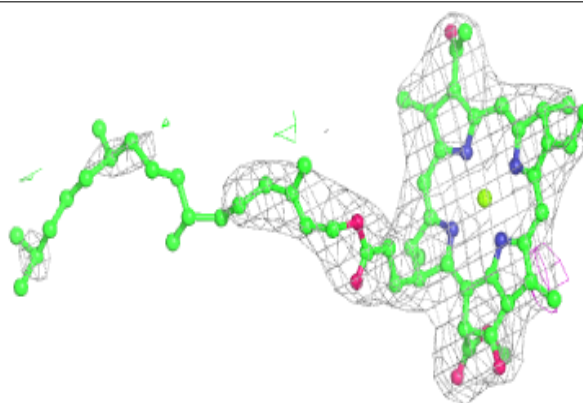


Electron density around MQ7 M 402 (A):

$2mF_o-DF_c$ (at 0.7 rmsd) in gray
 mF_o-DF_c (at 3 rmsd) in purple (negative)
and green (positive)

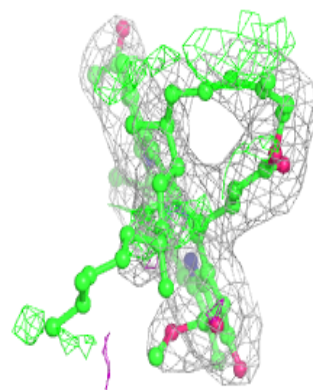
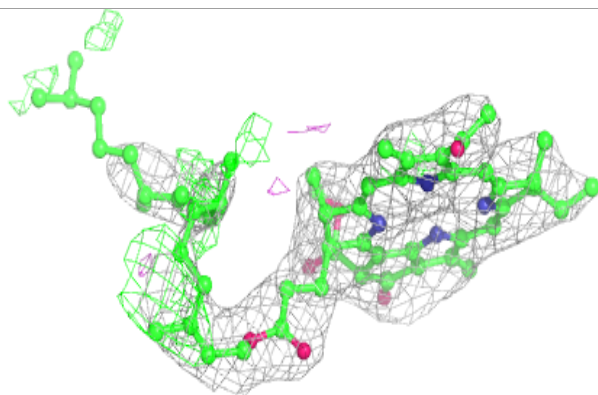
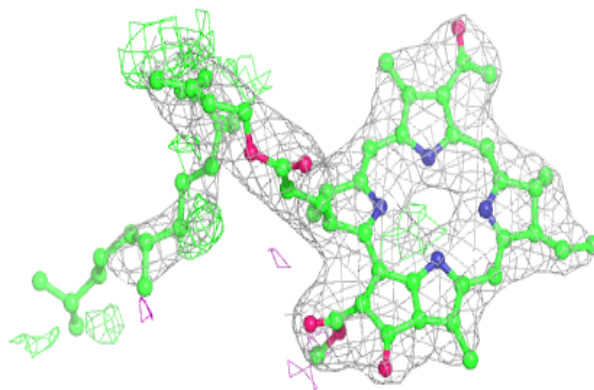
**Electron density around BCB L 304:**

$2mF_o-DF_c$ (at 0.7 rmsd) in gray
 mF_o-DF_c (at 3 rmsd) in purple (negative)
and green (positive)



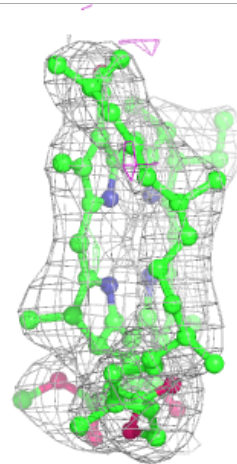
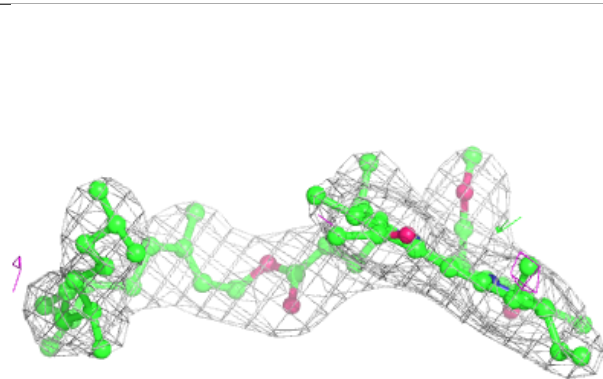
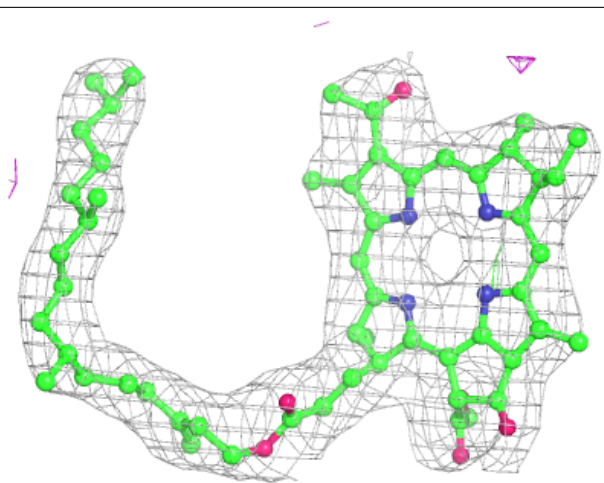
Electron density around BPB L 305:

$2mF_o-DF_c$ (at 0.7 rmsd) in gray
 mF_o-DF_c (at 3 rmsd) in purple (negative)
and green (positive)



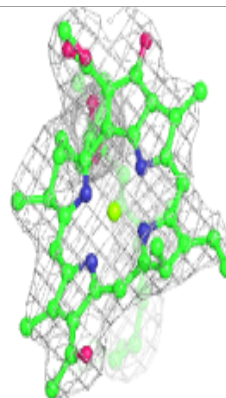
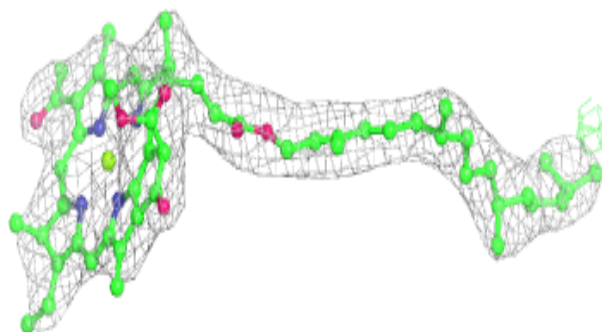
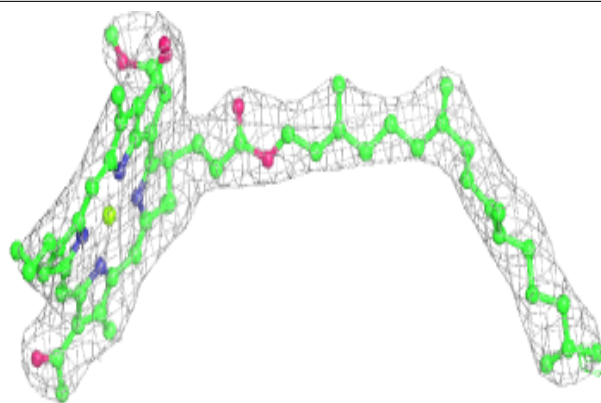
Electron density around BPB L 303 (B):

$2mF_o-DF_c$ (at 0.7 rmsd) in gray
 mF_o-DF_c (at 3 rmsd) in purple (negative)
and green (positive)



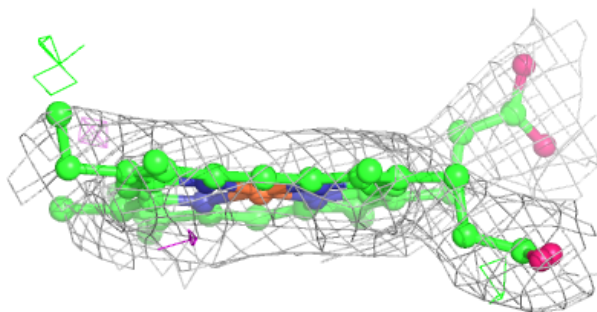
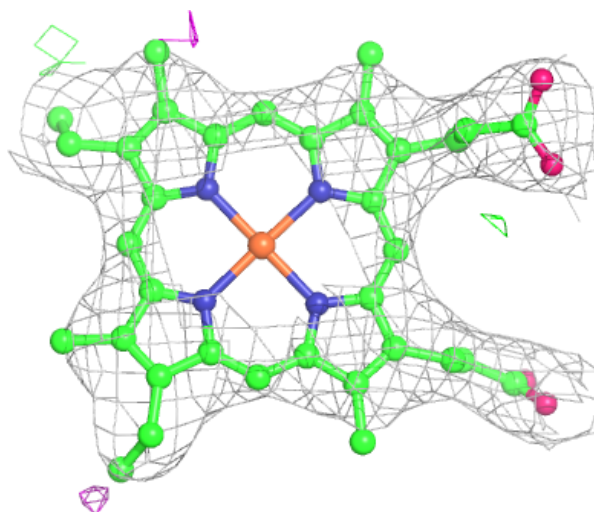
Electron density around BCB L 301 (B):

$2mF_o-DF_c$ (at 0.7 rmsd) in gray
 mF_o-DF_c (at 3 rmsd) in purple (negative)
and green (positive)



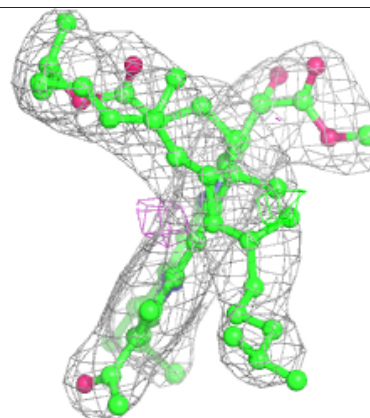
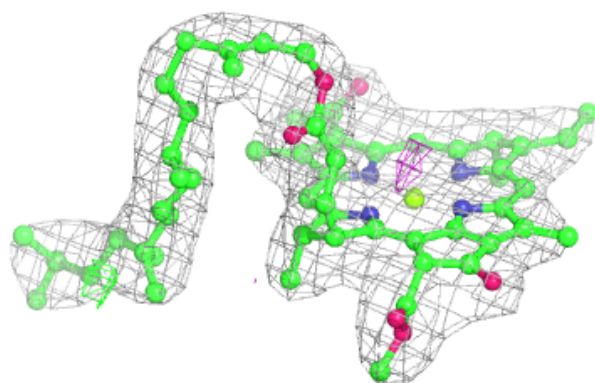
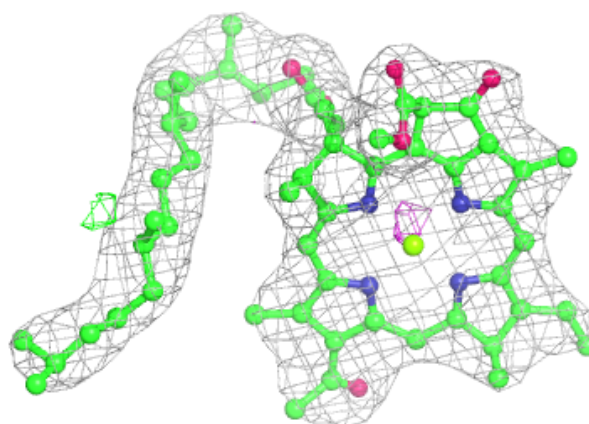
Electron density around HEC C 401:

$2mF_o-DF_c$ (at 0.7 rmsd) in gray
 mF_o-DF_c (at 3 rmsd) in purple (negative)
and green (positive)

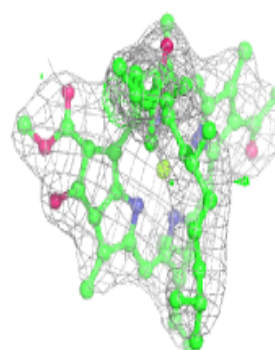
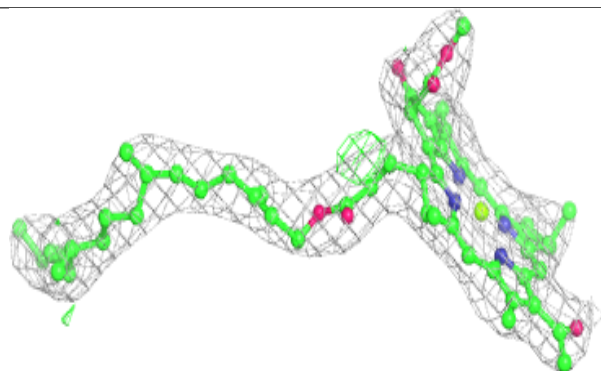
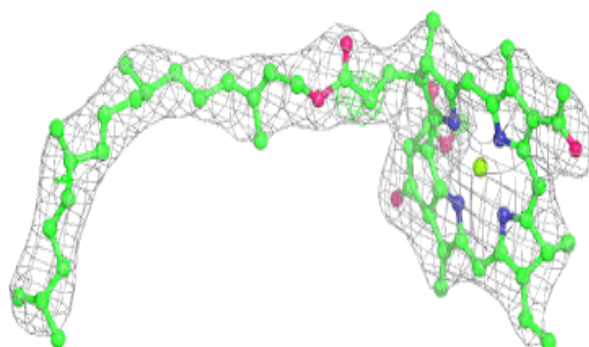


Electron density around BCB L 302 (B):

$2mF_o-DF_c$ (at 0.7 rmsd) in gray
 mF_o-DF_c (at 3 rmsd) in purple (negative)
and green (positive)

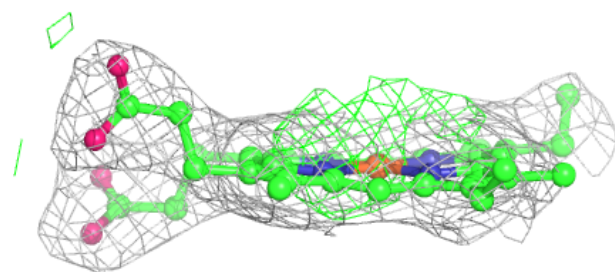
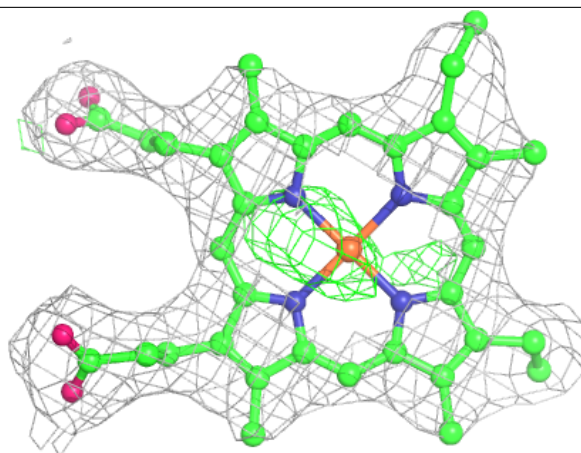
**Electron density around BCB M 403 (A):**

$2mF_o-DF_c$ (at 0.7 rmsd) in gray
 mF_o-DF_c (at 3 rmsd) in purple (negative)
and green (positive)



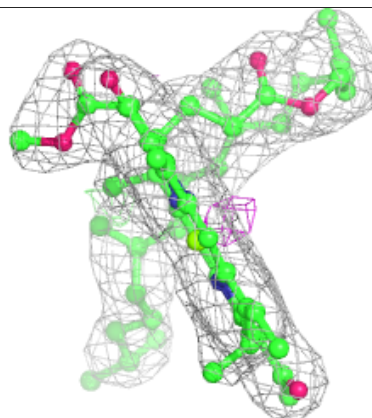
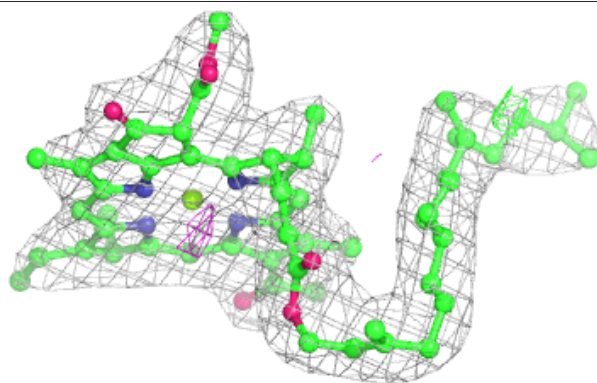
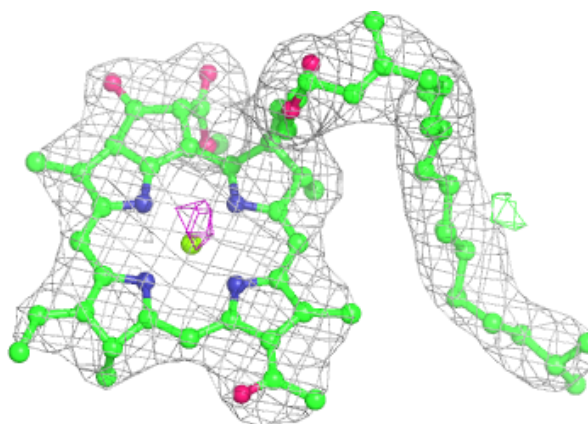
Electron density around HEC C 403:

$2mF_o-DF_c$ (at 0.7 rmsd) in gray
 mF_o-DF_c (at 3 rmsd) in purple (negative)
and green (positive)



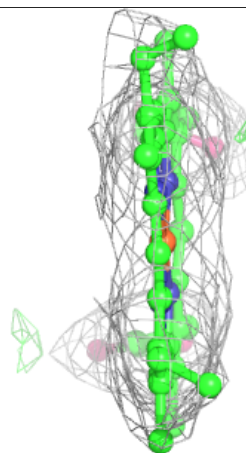
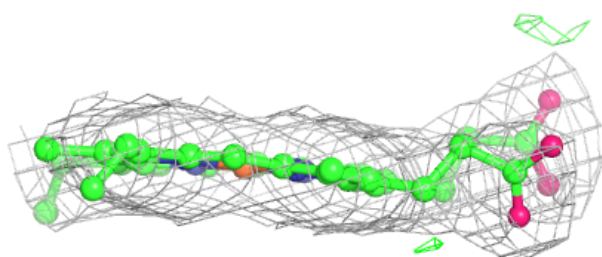
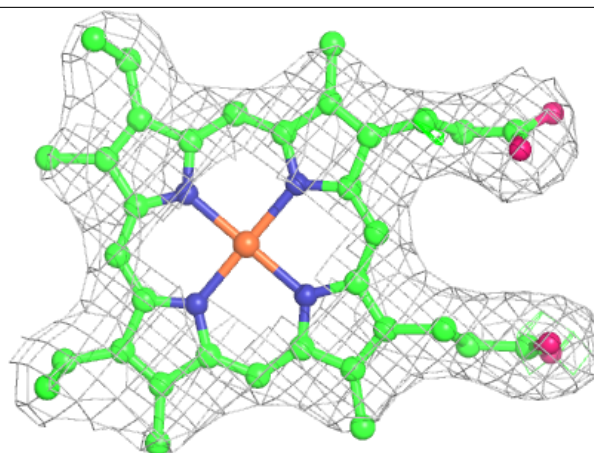
Electron density around BCB L 302 (A):

$2mF_o-DF_c$ (at 0.7 rmsd) in gray
 mF_o-DF_c (at 3 rmsd) in purple (negative)
and green (positive)

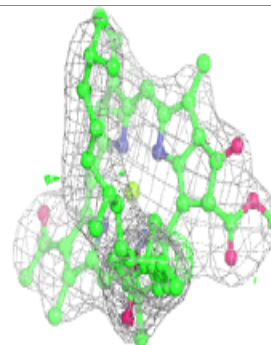
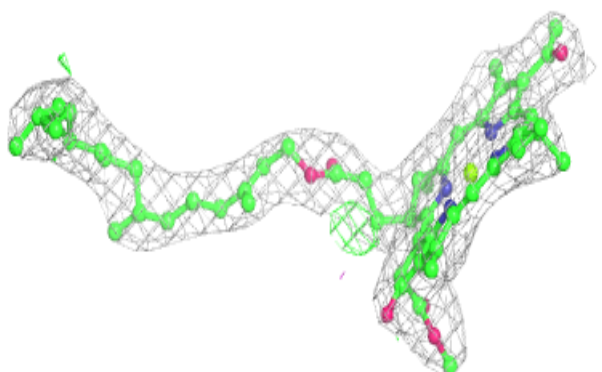
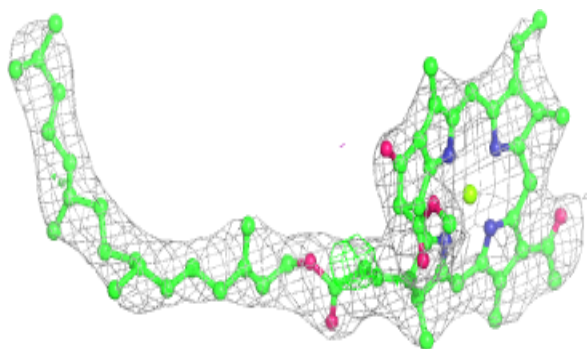


Electron density around HEC C 404:

$2mF_o-DF_c$ (at 0.7 rmsd) in gray
 mF_o-DF_c (at 3 rmsd) in purple (negative)
and green (positive)

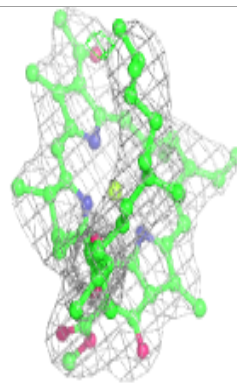
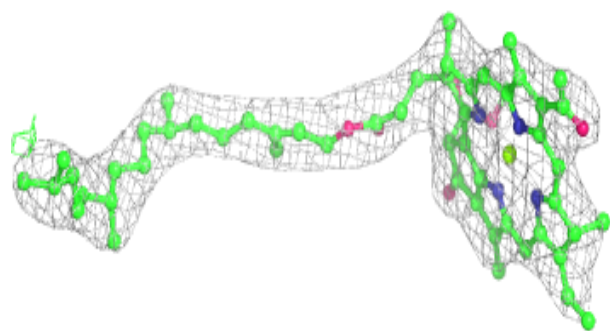
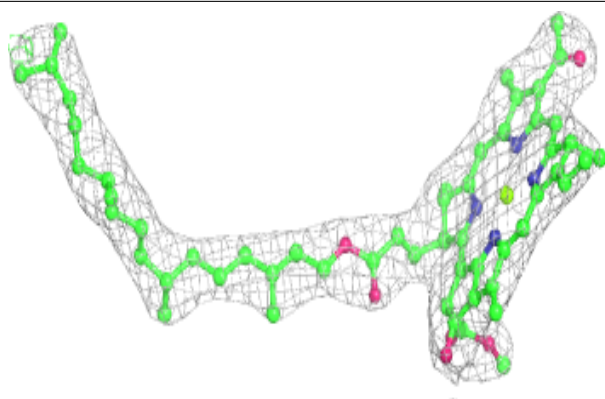
**Electron density around BCB M 403 (B):**

$2mF_o-DF_c$ (at 0.7 rmsd) in gray
 mF_o-DF_c (at 3 rmsd) in purple (negative)
and green (positive)



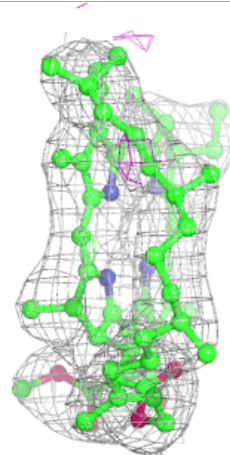
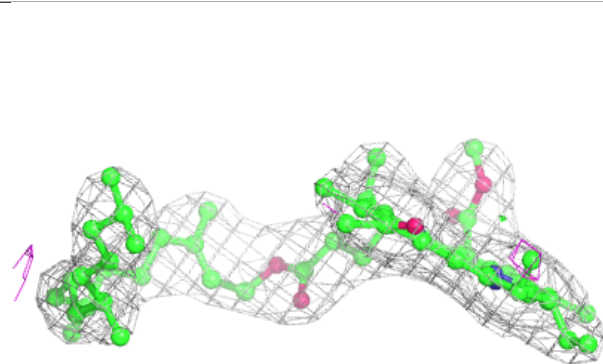
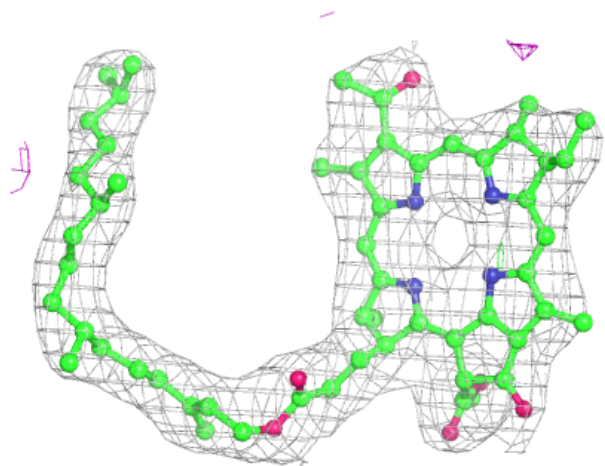
Electron density around BCB L 301 (A):

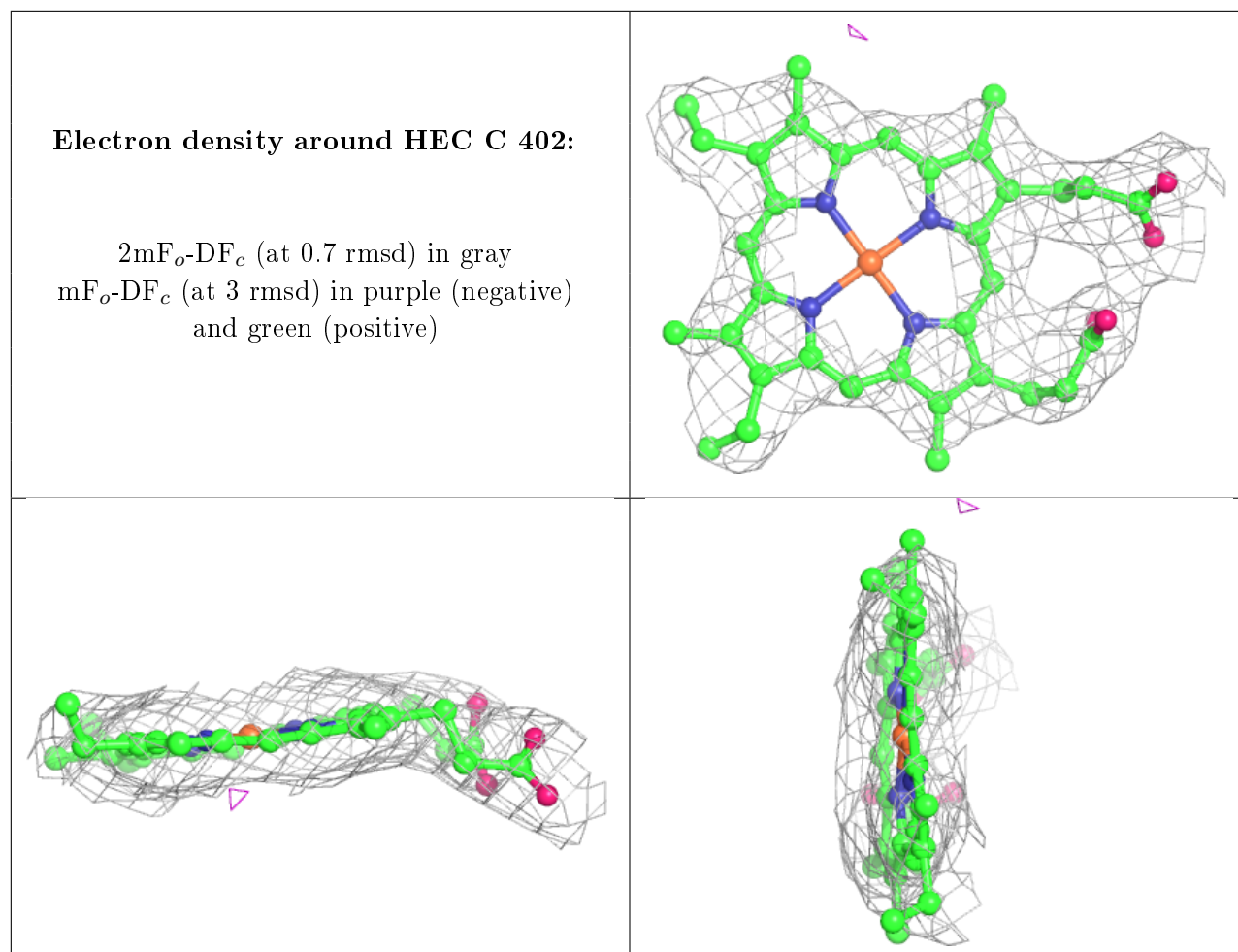
$2mF_o-DF_c$ (at 0.7 rmsd) in gray
 mF_o-DF_c (at 3 rmsd) in purple (negative)
and green (positive)



Electron density around BPB L 303 (A):

$2mF_o-DF_c$ (at 0.7 rmsd) in gray
 mF_o-DF_c (at 3 rmsd) in purple (negative)
and green (positive)





6.5 Other polymers [i](#)

There are no such residues in this entry.