



Full wwPDB X-ray Structure Validation Report ⓘ

May 26, 2020 – 10:00 pm BST

PDB ID : 2ZJO
Title : Crystal structure of hepatitis C virus NS3 helicase with a novel inhibitor
Authors : Liaw, S.H.; Chen, S.J.; Hu, C.Y.; Chi, W.K.; Chu, I.D.; Hwang, L.H.; Chern, J.W.; Chen, D.S.
Deposited on : 2008-03-07
Resolution : 2.50 Å(reported)

This is a Full wwPDB X-ray Structure Validation Report for a publicly released PDB entry.

We welcome your comments at validation@mail.wwpdb.org

A user guide is available at

<https://www.wwpdb.org/validation/2017/XrayValidationReportHelp>

with specific help available everywhere you see the ⓘ symbol.

The following versions of software and data (see [references ⓘ](#)) were used in the production of this report:

MolProbity : 4.02b-467
Mogul : 1.8.5 (274361), CSD as541be (2020)
Xtriage (Phenix) : 1.13
EDS : 2.11
buster-report : 1.1.7 (2018)
Percentile statistics : 20191225.v01 (using entries in the PDB archive December 25th 2019)
Refmac : 5.8.0158
CCP4 : 7.0.044 (Gargrove)
Ideal geometry (proteins) : Engh & Huber (2001)
Ideal geometry (DNA, RNA) : Parkinson et al. (1996)
Validation Pipeline (wwPDB-VP) : 2.11

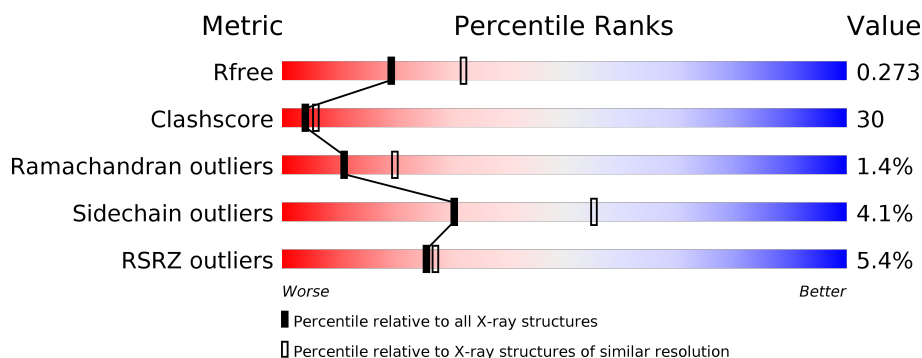
1 Overall quality at a glance

The following experimental techniques were used to determine the structure:

X-RAY DIFFRACTION

The reported resolution of this entry is 2.50 Å.

Percentile scores (ranging between 0-100) for global validation metrics of the entry are shown in the following graphic. The table shows the number of entries on which the scores are based.



Metric	Whole archive (#Entries)	Similar resolution (#Entries, resolution range(Å))
R_{free}	130704	4661 (2.50-2.50)
Clashscore	141614	5346 (2.50-2.50)
Ramachandran outliers	138981	5231 (2.50-2.50)
Sidechain outliers	138945	5233 (2.50-2.50)
RSRZ outliers	127900	4559 (2.50-2.50)

The table below summarises the geometric issues observed across the polymeric chains and their fit to the electron density. The red, orange, yellow and green segments on the lower bar indicate the fraction of residues that contain outliers for ≥ 3 , 2, 1 and 0 types of geometric quality criteria respectively. A grey segment represents the fraction of residues that are not modelled. The numeric value for each fraction is indicated below the corresponding segment, with a dot representing fractions $\leq 5\%$. The upper red bar (where present) indicates the fraction of residues that have poor fit to the electron density. The numeric value is given above the bar.

Mol	Chain	Length	Quality of chain
1	A	482	<div> <div>5%</div> <div>55%</div> <div>34%</div> <div>8%</div> </div>

2 Entry composition

There are 3 unique types of molecules in this entry. The entry contains 3457 atoms, of which 0 are hydrogens and 0 are deuteriums.

In the tables below, the ZeroOcc column contains the number of atoms modelled with zero occupancy, the AltConf column contains the number of residues with at least one atom in alternate conformation and the Trace column contains the number of residues modelled with at most 2 atoms.

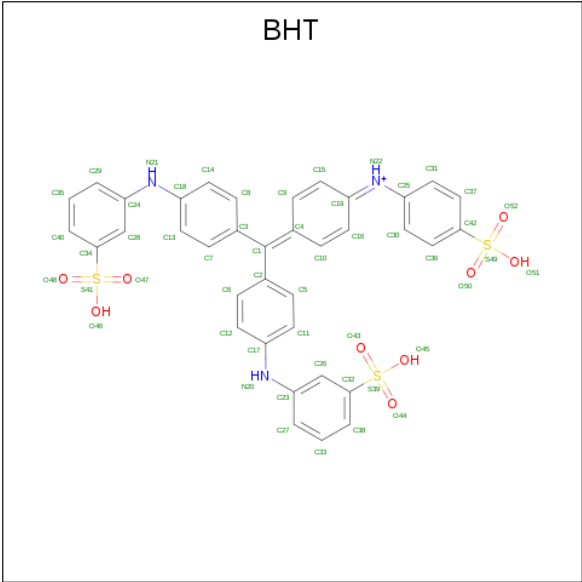
- Molecule 1 is a protein called Genome polyprotein.

Mol	Chain	Residues	Atoms					ZeroOcc	AltConf	Trace
			Total	C	N	O	S			
1	A	444	3338	2111	570	635	22	0	0	0

There are 17 discrepancies between the modelled and reference sequences:

Chain	Residue	Modelled	Actual	Comment	Reference
A	156	MET	-	EXPRESSION TAG	UNP P29846
A	157	ALA	-	EXPRESSION TAG	UNP P29846
A	158	SER	-	EXPRESSION TAG	UNP P29846
A	159	MET	-	EXPRESSION TAG	UNP P29846
A	160	THR	-	EXPRESSION TAG	UNP P29846
A	161	GLY	-	EXPRESSION TAG	UNP P29846
A	162	GLY	-	EXPRESSION TAG	UNP P29846
A	163	GLN	-	EXPRESSION TAG	UNP P29846
A	164	GLN	-	EXPRESSION TAG	UNP P29846
A	165	MET	-	EXPRESSION TAG	UNP P29846
A	166	GLY	-	EXPRESSION TAG	UNP P29846
A	632	HIS	-	EXPRESSION TAG	UNP P29846
A	633	HIS	-	EXPRESSION TAG	UNP P29846
A	634	HIS	-	EXPRESSION TAG	UNP P29846
A	635	HIS	-	EXPRESSION TAG	UNP P29846
A	636	HIS	-	EXPRESSION TAG	UNP P29846
A	637	HIS	-	EXPRESSION TAG	UNP P29846

- Molecule 2 is N-[4-(BIS{4-[(3-SULFOPHENYL)AMINO]PHENYL}METHYLENE)CYCLOHEXA-2,5-DIEN-1-YLIDENE]-4-SULFOBENZENAMINIUM (three-letter code: BHT) (formula: C₃₇H₃₀N₃O₉S₃).



Mol	Chain	Residues	Atoms					ZeroOcc	AltConf
2	A	1	Total	C	N	O	S	0	0
			52	37	3	9	3		

- Molecule 3 is water.

Mol	Chain	Residues	Atoms		ZeroOcc	AltConf
3	A	67	Total	O	0	0
			67	67		

- Molecule 1: Genome polyprotein



4 Data and refinement statistics

Property	Value	Source
Space group	P 31 2 1	Depositor
Cell constants a, b, c, α , β , γ	92.06 Å 92.06 Å 104.71 Å 90.00° 90.00° 120.00°	Depositor
Resolution (Å)	50.00 – 2.50 46.03 – 2.48	Depositor EDS
% Data completeness (in resolution range)	99.8 (50.00-2.50) 96.5 (46.03-2.48)	Depositor EDS
R_{merge}	0.07	Depositor
R_{sym}	0.06	Depositor
$\langle I/\sigma(I) \rangle$ ¹	1.29 (at 2.48 Å)	Xtriage
Refinement program	CNS 1.0	Depositor
R, R_{free}	0.230 , 0.287 0.219 , 0.273	Depositor DCC
R_{free} test set	1765 reflections (9.81%)	wwPDB-VP
Wilson B-factor (Å ²)	51.0	Xtriage
Anisotropy	0.308	Xtriage
Bulk solvent k_{sol} (e/Å ³), B_{sol} (Å ²)	0.35 , 35.6	EDS
L-test for twinning ²	$\langle L \rangle = 0.50$, $\langle L^2 \rangle = 0.33$	Xtriage
Estimated twinning fraction	0.027 for -h,-k,l	Xtriage
F_o, F_c correlation	0.94	EDS
Total number of atoms	3457	wwPDB-VP
Average B, all atoms (Å ²)	55.0	wwPDB-VP

Xtriage's analysis on translational NCS is as follows: *The largest off-origin peak in the Patterson function is 4.85% of the height of the origin peak. No significant pseudotranslation is detected.*

¹Intensities estimated from amplitudes.

²Theoretical values of $\langle |L| \rangle$, $\langle L^2 \rangle$ for acentric reflections are 0.5, 0.333 respectively for untwinned datasets, and 0.375, 0.2 for perfectly twinned datasets.

5 Model quality ⓘ

5.1 Standard geometry ⓘ

Bond lengths and bond angles in the following residue types are not validated in this section: BHT

The Z score for a bond length (or angle) is the number of standard deviations the observed value is removed from the expected value. A bond length (or angle) with $|Z| > 5$ is considered an outlier worth inspection. RMSZ is the root-mean-square of all Z scores of the bond lengths (or angles).

Mol	Chain	Bond lengths		Bond angles	
		RMSZ	# Z >5	RMSZ	# Z >5
1	A	0.42	0/3420	0.63	0/4673

There are no bond length outliers.

There are no bond angle outliers.

There are no chirality outliers.

There are no planarity outliers.

5.2 Too-close contacts ⓘ

In the following table, the Non-H and H(model) columns list the number of non-hydrogen atoms and hydrogen atoms in the chain respectively. The H(added) column lists the number of hydrogen atoms added and optimized by MolProbity. The Clashes column lists the number of clashes within the asymmetric unit, whereas Symm-Clashes lists symmetry related clashes.

Mol	Chain	Non-H	H(model)	H(added)	Clashes	Symm-Clashes
1	A	3338	0	3295	190	0
2	A	52	0	30	12	1
3	A	67	0	0	63	1
All	All	3457	0	3325	200	1

The all-atom clashscore is defined as the number of clashes found per 1000 atoms (including hydrogen atoms). The all-atom clashscore for this structure is 30.

All (200) close contacts within the same asymmetric unit are listed below, sorted by their clash magnitude.

Atom-1	Atom-2	Interatomic distance (Å)	Clash overlap (Å)
1:A:316:ARG:HG3	3:A:60:HOH:O	1.36	1.23

Continued on next page...

Continued from previous page...

Atom-1	Atom-2	Interatomic distance (Å)	Clash overlap (Å)
1:A:481:ARG:HD2	3:A:50:HOH:O	1.39	1.22
1:A:340:ALA:HB1	3:A:33:HOH:O	1.41	1.18
2:A:130:BHT:H15	2:A:130:BHT:H31	1.11	1.07
1:A:197:PHE:HB2	3:A:65:HOH:O	1.53	1.07
1:A:391:TYR:CZ	3:A:41:HOH:O	2.09	1.06
1:A:574:PRO:HB2	3:A:27:HOH:O	1.59	1.01
1:A:396:ASP:HA	3:A:4:HOH:O	1.59	1.00
1:A:485:MET:HE3	3:A:50:HOH:O	1.59	1.00
2:A:130:BHT:C31	2:A:130:BHT:H15	1.93	0.97
2:A:130:BHT:C15	2:A:130:BHT:H31	1.96	0.96
1:A:382:SER:N	3:A:21:HOH:O	2.01	0.94
1:A:219:ALA:HB2	1:A:265:ILE:HD11	1.53	0.90
1:A:615:ILE:O	1:A:619:ILE:HD13	1.71	0.90
1:A:415:MET:HB2	1:A:418:PHE:HB2	1.57	0.87
1:A:404:GLY:N	3:A:12:HOH:O	2.10	0.84
1:A:341:LEU:N	3:A:33:HOH:O	2.10	0.83
1:A:339:ILE:HD11	3:A:34:HOH:O	1.78	0.82
1:A:361:GLY:HA2	1:A:405:ASN:ND2	1.94	0.81
1:A:339:ILE:CD1	3:A:34:HOH:O	2.28	0.81
1:A:346:GLU:OE2	1:A:356:ILE:HD12	1.82	0.80
2:A:130:BHT:H28	2:A:130:BHT:H13	1.63	0.78
1:A:340:ALA:CA	3:A:33:HOH:O	2.31	0.78
1:A:408:VAL:HG12	3:A:53:HOH:O	1.82	0.78
2:A:130:BHT:H26	2:A:130:BHT:H11	1.65	0.77
1:A:457:SER:OG	3:A:49:HOH:O	2.01	0.76
1:A:395:LEU:O	3:A:4:HOH:O	2.04	0.76
1:A:365:LEU:HB2	1:A:422:PHE:CE1	2.20	0.76
1:A:388:ALA:HB3	3:A:21:HOH:O	1.86	0.74
1:A:474:ARG:HG2	3:A:67:HOH:O	1.88	0.73
1:A:214:VAL:HB	1:A:215:PRO:HD3	1.71	0.72
1:A:575:PRO:HG3	1:A:585:LEU:HD12	1.72	0.72
1:A:411:THR:HG23	3:A:55:HOH:O	1.90	0.72
1:A:436:VAL:HG11	1:A:488:SER:HB3	1.72	0.71
1:A:193:VAL:HG21	1:A:223:TYR:CE2	2.26	0.70
1:A:197:PHE:CD2	3:A:64:HOH:O	2.44	0.70
1:A:342:SER:OG	1:A:344:THR:HG22	1.93	0.69
1:A:197:PHE:CE2	3:A:64:HOH:O	2.46	0.68
1:A:205:PRO:O	3:A:19:HOH:O	2.10	0.68
1:A:229:ASN:HD22	1:A:231:SER:H	1.41	0.68
1:A:574:PRO:CB	3:A:27:HOH:O	2.29	0.67
1:A:223:TYR:HE1	1:A:316:ARG:NH1	1.93	0.67

Continued on next page...

Continued from previous page...

Atom-1	Atom-2	Interatomic distance (Å)	Clash overlap (Å)
1:A:589:LYS:HB3	1:A:590:PRO:HD3	1.77	0.66
1:A:359:ILE:HA	1:A:364:HIS:CE1	2.32	0.64
1:A:409:VAL:C	3:A:53:HOH:O	2.35	0.64
1:A:391:TYR:O	3:A:55:HOH:O	2.16	0.63
1:A:348:PRO:HD2	1:A:380:LYS:NZ	2.15	0.62
1:A:356:ILE:HD13	1:A:357:GLU:H	1.65	0.62
1:A:408:VAL:CG1	3:A:53:HOH:O	2.42	0.61
1:A:346:GLU:O	1:A:348:PRO:HD3	1.98	0.61
1:A:347:ILE:HG23	1:A:380:LYS:HE3	1.82	0.61
1:A:447:GLU:OE2	3:A:59:HOH:O	2.16	0.61
1:A:589:LYS:HD3	3:A:58:HOH:O	2.01	0.61
1:A:356:ILE:HD13	1:A:356:ILE:N	2.16	0.61
1:A:369:HIS:CE1	1:A:373:LYS:HG3	2.36	0.61
1:A:548:SER:O	1:A:552:GLN:HG2	2.01	0.60
1:A:372:LYS:NZ	1:A:372:LYS:HB3	2.16	0.60
1:A:208:SER:OG	3:A:19:HOH:O	2.01	0.60
1:A:359:ILE:N	1:A:359:ILE:HD13	2.17	0.60
1:A:391:TYR:O	1:A:410:ALA:HA	2.01	0.60
1:A:233:ALA:HB3	2:A:130:BHT:H7	1.83	0.60
1:A:391:TYR:CE1	3:A:41:HOH:O	2.43	0.59
1:A:340:ALA:C	3:A:33:HOH:O	2.35	0.59
1:A:389:VAL:HG11	1:A:399:VAL:O	2.03	0.59
1:A:531:PHE:O	1:A:535:VAL:HG23	2.03	0.58
1:A:478:PRO:HG2	1:A:479:GLY:H	1.69	0.58
1:A:574:PRO:HD2	3:A:27:HOH:O	2.03	0.58
1:A:248:VAL:O	1:A:250:PRO:HD3	2.04	0.58
1:A:396:ASP:O	1:A:399:VAL:HG12	2.04	0.58
1:A:246:HIS:O	1:A:248:VAL:HG23	2.04	0.57
1:A:274:LEU:HD21	1:A:302:GLY:HA2	1.85	0.57
1:A:196:ALA:O	3:A:65:HOH:O	2.17	0.57
1:A:371:LYS:H	1:A:371:LYS:HD2	1.70	0.57
1:A:422:PHE:HB2	1:A:464:ARG:O	2.05	0.57
1:A:372:LYS:HZ3	1:A:373:LYS:N	2.02	0.57
1:A:374:CYS:SG	3:A:55:HOH:O	2.14	0.56
1:A:526:GLN:HG2	1:A:528:HIS:NE2	2.21	0.56
1:A:363:ARG:NH1	3:A:12:HOH:O	2.38	0.56
1:A:618:TYR:HD2	1:A:619:ILE:HD12	1.70	0.56
1:A:286:ILE:HD12	1:A:317:LEU:HD23	1.87	0.56
1:A:372:LYS:HB3	1:A:372:LYS:HZ3	1.71	0.56
1:A:356:ILE:O	1:A:360:LYS:HG3	2.06	0.56
1:A:436:VAL:CG1	1:A:488:SER:HB3	2.35	0.56

Continued on next page...

Continued from previous page...

Atom-1	Atom-2	Interatomic distance (Å)	Clash overlap (Å)
1:A:229:ASN:ND2	1:A:231:SER:H	2.04	0.55
1:A:340:ALA:CB	3:A:33:HOH:O	2.12	0.55
1:A:469:ARG:NH1	3:A:30:HOH:O	2.38	0.55
1:A:424:SER:CB	1:A:472:ILE:HB	2.36	0.55
2:A:130:BHT:H10	2:A:130:BHT:C5	2.35	0.55
1:A:575:PRO:HG3	1:A:585:LEU:CD1	2.37	0.55
1:A:336:ILE:HD13	1:A:462:ARG:HG2	1.89	0.55
1:A:587:ARG:NH2	3:A:18:HOH:O	2.32	0.55
1:A:334:PRO:C	1:A:335:ASN:HD22	2.11	0.54
1:A:567:VAL:HG21	1:A:599:LEU:HD11	1.89	0.54
1:A:356:ILE:HA	1:A:359:ILE:HD11	1.89	0.54
1:A:392:TYR:CE1	1:A:395:LEU:HD11	2.42	0.54
1:A:514:ARG:CZ	1:A:529:LEU:HD12	2.38	0.54
1:A:365:LEU:HB2	1:A:422:PHE:CD1	2.42	0.54
1:A:391:TYR:HB3	1:A:410:ALA:HB2	1.90	0.53
1:A:359:ILE:HA	1:A:364:HIS:ND1	2.24	0.53
2:A:130:BHT:H9	2:A:130:BHT:C8	2.38	0.53
1:A:462:ARG:O	1:A:465:THR:HG22	2.09	0.53
1:A:339:ILE:O	1:A:474:ARG:HA	2.08	0.53
1:A:474:ARG:CG	3:A:67:HOH:O	2.53	0.53
1:A:311:GLU:HB2	3:A:64:HOH:O	2.07	0.53
1:A:291:GLU:OE1	3:A:6:HOH:O	2.19	0.52
1:A:294:SER:HB2	1:A:299:THR:HG21	1.92	0.52
1:A:356:ILE:N	1:A:356:ILE:CD1	2.73	0.52
1:A:449:THR:HG22	1:A:450:THR:N	2.26	0.51
1:A:493:GLU:HG3	1:A:557:PHE:CZ	2.46	0.51
1:A:371:LYS:HG3	1:A:392:TYR:HB2	1.93	0.51
1:A:403:SER:C	3:A:12:HOH:O	2.46	0.51
1:A:619:ILE:N	1:A:619:ILE:HD12	2.25	0.50
1:A:348:PRO:HD2	1:A:380:LYS:HZ1	1.76	0.50
1:A:476:VAL:HG23	1:A:477:THR:OG1	2.11	0.50
1:A:197:PHE:CG	3:A:64:HOH:O	2.64	0.50
1:A:587:ARG:NE	3:A:18:HOH:O	2.29	0.50
1:A:409:VAL:N	3:A:53:HOH:O	2.45	0.49
1:A:324:THR:HG21	1:A:456:VAL:HG22	1.94	0.49
1:A:420:GLY:HA2	1:A:464:ARG:HH21	1.78	0.49
1:A:398:SER:C	1:A:400:ILE:H	2.16	0.49
1:A:538:GLY:HA3	1:A:618:TYR:CE2	2.47	0.48
1:A:197:PHE:CG	1:A:198:GLN:N	2.82	0.48
1:A:371:LYS:H	1:A:371:LYS:CD	2.25	0.48
1:A:583:LYS:HA	1:A:586:THR:HG23	1.94	0.48

Continued on next page...

Continued from previous page...

Atom-1	Atom-2	Interatomic distance (Å)	Clash overlap (Å)
1:A:486:PHE:HA	3:A:14:HOH:O	2.13	0.48
1:A:469:ARG:NH1	3:A:54:HOH:O	2.46	0.48
1:A:619:ILE:N	1:A:619:ILE:CD1	2.77	0.48
1:A:259:ILE:N	1:A:259:ILE:HD12	2.28	0.48
1:A:382:SER:CA	3:A:21:HOH:O	2.54	0.48
1:A:201:HIS:CE1	1:A:320:LEU:HD12	2.49	0.47
1:A:372:LYS:O	1:A:374:CYS:N	2.47	0.47
1:A:578:TRP:CZ2	1:A:589:LYS:HG3	2.49	0.47
1:A:347:ILE:HD11	1:A:384:LEU:HD12	1.96	0.47
1:A:336:ILE:HG12	1:A:466:SER:HB3	1.96	0.47
1:A:215:PRO:HG3	1:A:288:MET:SD	2.54	0.47
1:A:212:THR:HB	1:A:242:MET:SD	2.55	0.46
1:A:187:ASN:N	3:A:51:HOH:O	2.48	0.46
1:A:426:ILE:HD12	1:A:426:ILE:N	2.31	0.46
1:A:195:GLN:OE1	3:A:63:HOH:O	2.20	0.46
1:A:197:PHE:CD2	1:A:198:GLN:N	2.83	0.46
1:A:575:PRO:HB2	1:A:577:SER:O	2.16	0.46
1:A:238:PHE:O	1:A:242:MET:HG2	2.16	0.46
1:A:460:GLN:HE21	1:A:460:GLN:HB3	1.51	0.46
1:A:488:SER:O	1:A:491:LEU:HB2	2.16	0.45
1:A:429:ASN:OD1	1:A:476:VAL:HG22	2.17	0.45
1:A:574:PRO:CD	3:A:27:HOH:O	2.60	0.45
1:A:599:LEU:HD22	1:A:615:ILE:HG22	1.97	0.45
1:A:412:ASP:CG	1:A:461:ARG:HH21	2.19	0.45
1:A:197:PHE:CZ	3:A:64:HOH:O	2.68	0.45
1:A:253:ARG:HB2	1:A:268:SER:HB2	1.98	0.45
1:A:420:GLY:HA2	1:A:464:ARG:NH2	2.32	0.45
1:A:564:GLN:HA	1:A:599:LEU:HD12	1.99	0.45
2:A:130:BHT:C28	2:A:130:BHT:H13	2.41	0.45
1:A:453:GLN:HG3	1:A:457:SER:HB3	1.98	0.45
1:A:403:SER:HA	3:A:12:HOH:O	2.16	0.45
1:A:453:GLN:NE2	1:A:458:ARG:HA	2.32	0.44
1:A:474:ARG:HD3	3:A:67:HOH:O	2.17	0.44
1:A:595:PRO:HA	1:A:608:GLU:HG3	1.99	0.44
1:A:429:ASN:ND2	1:A:458:ARG:NH1	2.66	0.44
1:A:359:ILE:H	1:A:359:ILE:HD13	1.82	0.44
1:A:478:PRO:HG2	1:A:479:GLY:N	2.32	0.44
1:A:485:MET:HB2	3:A:61:HOH:O	2.17	0.44
1:A:599:LEU:HD22	1:A:615:ILE:CG2	2.48	0.44
1:A:421:ASP:OD1	3:A:30:HOH:O	2.21	0.44
1:A:424:SER:HB3	1:A:472:ILE:HB	2.00	0.44

Continued on next page...

Continued from previous page...

Atom-1	Atom-2	Interatomic distance (Å)	Clash overlap (Å)
1:A:464:ARG:HG3	1:A:464:ARG:HH11	1.82	0.44
1:A:598:LEU:HB2	1:A:609:VAL:CG2	2.47	0.44
2:A:130:BHT:C15	2:A:130:BHT:C31	2.65	0.43
1:A:340:ALA:HB2	1:A:475:PHE:CZ	2.52	0.43
1:A:488:SER:N	3:A:37:HOH:O	2.47	0.43
1:A:335:ASN:N	1:A:335:ASN:HD22	2.15	0.43
1:A:335:ASN:N	1:A:335:ASN:ND2	2.67	0.43
1:A:233:ALA:CB	2:A:130:BHT:H7	2.47	0.43
2:A:130:BHT:C8	2:A:130:BHT:C9	2.96	0.43
1:A:356:ILE:CD1	1:A:356:ILE:H	2.31	0.43
1:A:442:PRO:HB3	1:A:611:LEU:HD22	2.01	0.43
1:A:549:GLN:NE2	3:A:18:HOH:O	2.25	0.42
1:A:399:VAL:O	1:A:400:ILE:HD13	2.20	0.42
1:A:576:PRO:HD2	1:A:582:TRP:CE2	2.55	0.42
1:A:613:HIS:ND1	1:A:614:PRO:HD2	2.35	0.42
1:A:372:LYS:CB	1:A:372:LYS:HZ3	2.32	0.42
1:A:411:THR:N	3:A:55:HOH:O	2.53	0.42
1:A:627:LEU:HD23	1:A:627:LEU:HA	1.86	0.42
1:A:629:VAL:O	1:A:630:VAL:HG23	2.20	0.42
1:A:414:LEU:CD2	1:A:464:ARG:HH12	2.33	0.41
1:A:574:PRO:CG	3:A:27:HOH:O	2.66	0.41
1:A:411:THR:C	1:A:413:ALA:H	2.22	0.41
1:A:432:VAL:HG12	1:A:450:THR:HG22	2.03	0.41
1:A:410:ALA:HB2	3:A:53:HOH:O	2.21	0.41
1:A:365:LEU:O	1:A:425:VAL:HA	2.21	0.41
1:A:276:ASP:OD2	3:A:57:HOH:O	2.21	0.41
1:A:363:ARG:NH1	1:A:404:GLY:O	2.54	0.41
1:A:399:VAL:HG22	1:A:399:VAL:O	2.21	0.41
1:A:289:CYS:O	1:A:292:CYS:HB3	2.20	0.40
1:A:305:THR:O	1:A:309:GLN:HG3	2.22	0.40
1:A:197:PHE:HA	1:A:316:ARG:O	2.21	0.40
1:A:193:VAL:HG11	1:A:223:TYR:CE1	2.57	0.40
1:A:229:ASN:O	1:A:269:THR:HA	2.21	0.40
1:A:466:SER:OG	1:A:466:SER:O	2.38	0.40
1:A:370:SER:OG	1:A:373:LYS:HB2	2.22	0.40

All (1) symmetry-related close contacts are listed below. The label for Atom-2 includes the symmetry operator and encoded unit-cell translations to be applied.

Atom-1	Atom-2	Interatomic distance (Å)	Clash overlap (Å)
2:A:130:BHT:C10	3:A:54:HOH:O[4_556]	2.19	0.01

5.3 Torsion angles

5.3.1 Protein backbone

In the following table, the Percentiles column shows the percent Ramachandran outliers of the chain as a percentile score with respect to all X-ray entries followed by that with respect to entries of similar resolution.

The Analysed column shows the number of residues for which the backbone conformation was analysed, and the total number of residues.

Mol	Chain	Analysed	Favoured	Allowed	Outliers	Percentiles	
1	A	442/482 (92%)	408 (92%)	28 (6%)	6 (1%)	11	20

All (6) Ramachandran outliers are listed below:

Mol	Chain	Res	Type
1	A	373	LYS
1	A	607	ASN
1	A	198	GLN
1	A	395	LEU
1	A	478	PRO
1	A	399	VAL

5.3.2 Protein sidechains

In the following table, the Percentiles column shows the percent sidechain outliers of the chain as a percentile score with respect to all X-ray entries followed by that with respect to entries of similar resolution.

The Analysed column shows the number of residues for which the sidechain conformation was analysed, and the total number of residues.

Mol	Chain	Analysed	Rotameric	Outliers	Percentiles	
1	A	362/396 (91%)	347 (96%)	15 (4%)	30	55

All (15) residues with a non-rotameric sidechain are listed below:

Mol	Chain	Res	Type
1	A	213	LYS
1	A	249	ASP
1	A	356	ILE
1	A	359	ILE
1	A	372	LYS

Continued on next page...

Continued from previous page...

Mol	Chain	Res	Type
1	A	377	LEU
1	A	392	TYR
1	A	393	ARG
1	A	421	ASP
1	A	448	THR
1	A	460	GLN
1	A	469	ARG
1	A	480	GLU
1	A	600	TYR
1	A	626	ASP

Some sidechains can be flipped to improve hydrogen bonding and reduce clashes. All (7) such sidechains are listed below:

Mol	Chain	Res	Type
1	A	195	GLN
1	A	201	HIS
1	A	229	ASN
1	A	335	ASN
1	A	364	HIS
1	A	460	GLN
1	A	552	GLN

5.3.3 RNA [i](#)

There are no RNA molecules in this entry.

5.4 Non-standard residues in protein, DNA, RNA chains [i](#)

There are no non-standard protein/DNA/RNA residues in this entry.

5.5 Carbohydrates [i](#)

There are no carbohydrates in this entry.

5.6 Ligand geometry [i](#)

1 ligand is modelled in this entry.

In the following table, the Counts columns list the number of bonds (or angles) for which Mogul statistics could be retrieved, the number of bonds (or angles) that are observed in the model and the number of bonds (or angles) that are defined in the Chemical Component Dictionary. The Link column lists molecule types, if any, to which the group is linked. The Z score for a bond length (or angle) is the number of standard deviations the observed value is removed from the expected value. A bond length (or angle) with $|Z| > 2$ is considered an outlier worth inspection. RMSZ is the root-mean-square of all Z scores of the bond lengths (or angles).

Mol	Type	Chain	Res	Link	Bond lengths			Bond angles		
					Counts	RMSZ	# $ Z > 2$	Counts	RMSZ	# $ Z > 2$
2	BHT	A	130	-	57,57,57	1.70	7 (12%)	83,84,84	1.01	1 (1%)

In the following table, the Chirals column lists the number of chiral outliers, the number of chiral centers analysed, the number of these observed in the model and the number defined in the Chemical Component Dictionary. Similar counts are reported in the Torsion and Rings columns. '-' means no outliers of that kind were identified.

Mol	Type	Chain	Res	Link	Chirals	Torsions	Rings
2	BHT	A	130	-	-	2/42/52/52	0/6/6/6

All (7) bond length outliers are listed below:

Mol	Chain	Res	Type	Atoms	Z	Observed(Å)	Ideal(Å)
2	A	130	BHT	C2-C1	-5.55	1.39	1.49
2	A	130	BHT	C3-C1	-5.46	1.40	1.49
2	A	130	BHT	C25-N22	-5.12	1.33	1.42
2	A	130	BHT	C24-N21	-3.17	1.33	1.40
2	A	130	BHT	C23-N20	-3.17	1.33	1.40
2	A	130	BHT	C17-N20	-3.14	1.33	1.40
2	A	130	BHT	C18-N21	-3.08	1.33	1.40

All (1) bond angle outliers are listed below:

Mol	Chain	Res	Type	Atoms	Z	Observed(°)	Ideal(°)
2	A	130	BHT	C6-C2-C1	-2.24	117.35	120.91

There are no chirality outliers.

All (2) torsion outliers are listed below:

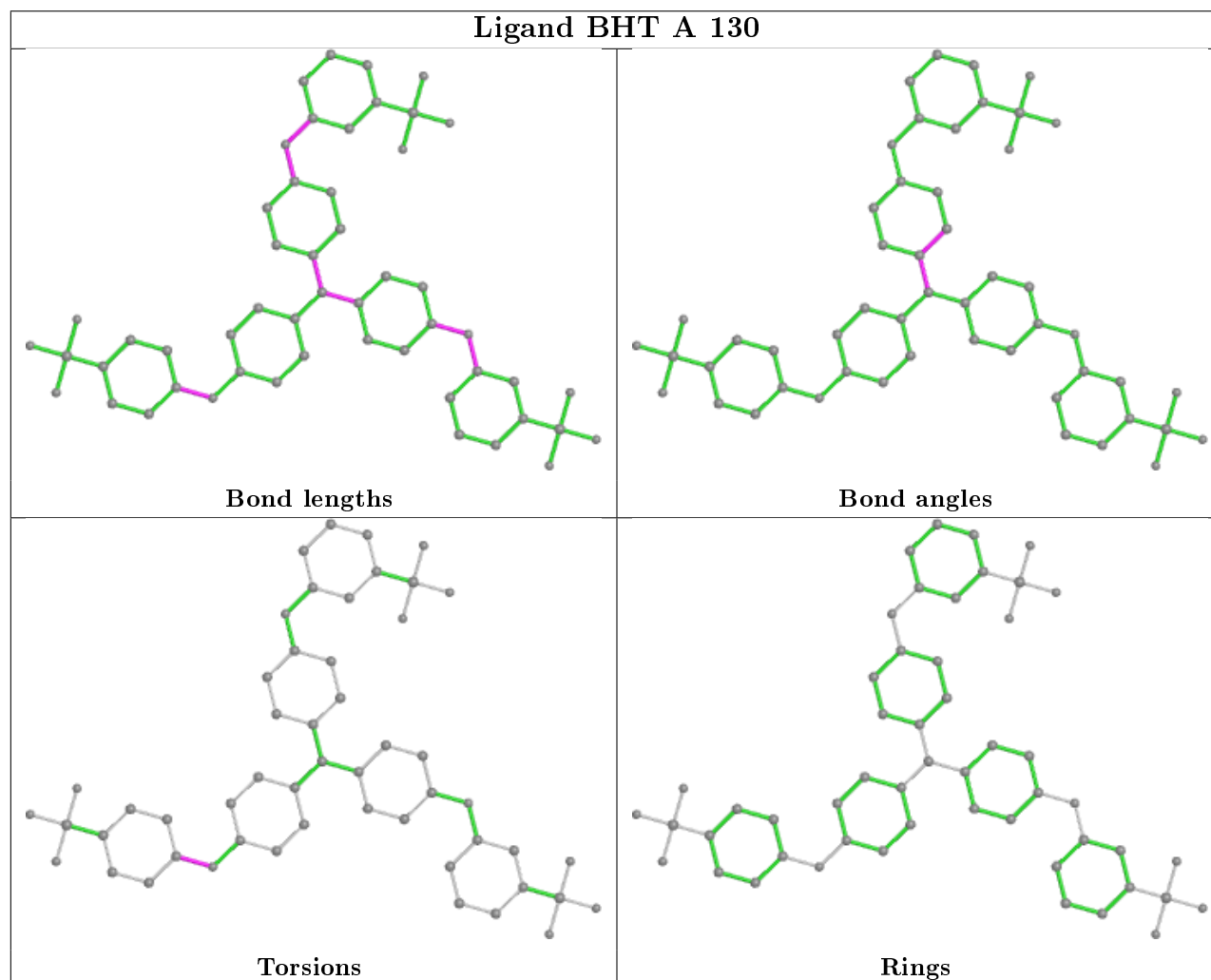
Mol	Chain	Res	Type	Atoms
2	A	130	BHT	C31-C25-N22-C19
2	A	130	BHT	C30-C25-N22-C19

There are no ring outliers.

1 monomer is involved in 13 short contacts:

Mol	Chain	Res	Type	Clashes	Symm-Clashes
2	A	130	BHT	12	1

The following is a two-dimensional graphical depiction of Mogul quality analysis of bond lengths, bond angles, torsion angles, and ring geometry for all instances of the Ligand of Interest. In addition, ligands with molecular weight > 250 and outliers as shown on the validation Tables will also be included. For torsion angles, if less than 5% of the Mogul distribution of torsion angles is within 10 degrees of the torsion angle in question, then that torsion angle is considered an outlier. Any bond that is central to one or more torsion angles identified as an outlier by Mogul will be highlighted in the graph. For rings, the root-mean-square deviation (RMSD) between the ring in question and similar rings identified by Mogul is calculated over all ring torsion angles. If the average RMSD is greater than 60 degrees and the minimal RMSD between the ring in question and any Mogul-identified rings is also greater than 60 degrees, then that ring is considered an outlier. The outliers are highlighted in purple. The color gray indicates Mogul did not find sufficient equivalents in the CSD to analyse the geometry.



5.7 Other polymers

There are no such residues in this entry.

5.8 Polymer linkage issues

There are no chain breaks in this entry.

6 Fit of model and data ⓘ

6.1 Protein, DNA and RNA chains ⓘ

In the following table, the column labelled ‘#RSRZ> 2’ contains the number (and percentage) of RSRZ outliers, followed by percent RSRZ outliers for the chain as percentile scores relative to all X-ray entries and entries of similar resolution. The OWAB column contains the minimum, median, 95th percentile and maximum values of the occupancy-weighted average B-factor per residue. The column labelled ‘Q< 0.9’ lists the number of (and percentage) of residues with an average occupancy less than 0.9.

Mol	Chain	Analysed	<RSRZ>	#RSRZ>2		OWAB(Å ²)	Q<0.9
1	A	444/482 (92%)	0.41	24 (5%)	25 27	34, 53, 74, 82	0

All (24) RSRZ outliers are listed below:

Mol	Chain	Res	Type	RSRZ
1	A	416	THR	7.4
1	A	630	VAL	5.1
1	A	282	GLY	3.8
1	A	188	SER	3.6
1	A	377	LEU	3.6
1	A	384	LEU	3.3
1	A	479	GLY	3.0
1	A	578	TRP	2.7
1	A	592	LEU	2.6
1	A	466	SER	2.5
1	A	397	VAL	2.5
1	A	555	ASP	2.4
1	A	421	ASP	2.4
1	A	629	VAL	2.4
1	A	388	ALA	2.3
1	A	411	THR	2.3
1	A	381	LEU	2.2
1	A	593	HIS	2.1
1	A	385	GLY	2.1
1	A	580	GLN	2.1
1	A	347	ILE	2.1
1	A	390	ALA	2.1
1	A	389	VAL	2.0
1	A	281	GLY	2.0

6.2 Non-standard residues in protein, DNA, RNA chains [i](#)

There are no non-standard protein/DNA/RNA residues in this entry.

6.3 Carbohydrates [i](#)

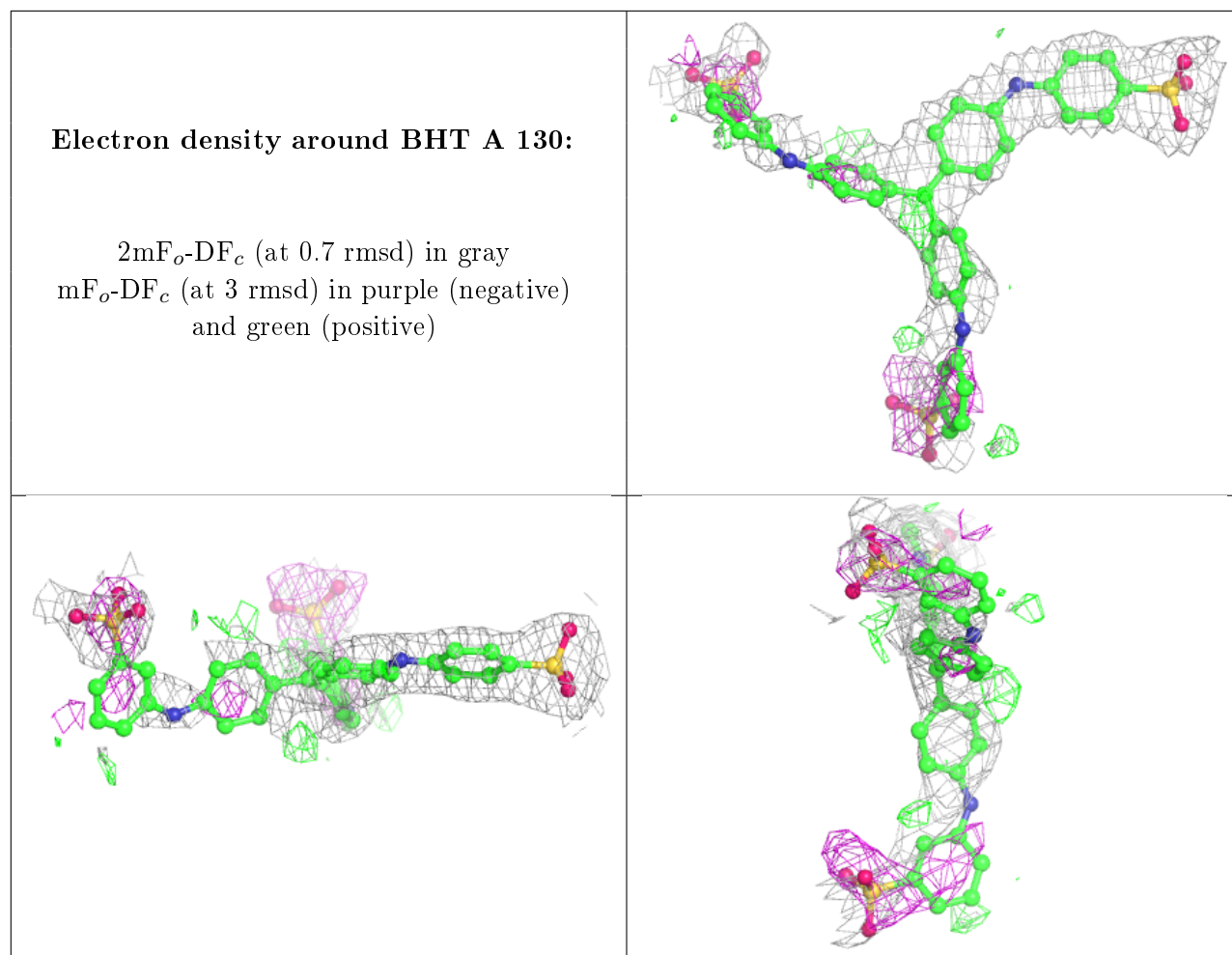
There are no carbohydrates in this entry.

6.4 Ligands [i](#)

In the following table, the Atoms column lists the number of modelled atoms in the group and the number defined in the chemical component dictionary. The B-factors column lists the minimum, median, 95th percentile and maximum values of B factors of atoms in the group. The column labelled 'Q< 0.9' lists the number of atoms with occupancy less than 0.9.

Mol	Type	Chain	Res	Atoms	RSCC	RSR	B-factors(\AA^2)	Q<0.9
2	BHT	A	130	52/52	0.81	0.33	40,79,98,99	0

The following is a graphical depiction of the model fit to experimental electron density of all instances of the Ligand of Interest. In addition, ligands with molecular weight > 250 and outliers as shown on the geometry validation Tables will also be included. Each fit is shown from different orientation to approximate a three-dimensional view.



6.5 Other polymers ⓘ

There are no such residues in this entry.