



Full wwPDB X-ray Structure Validation Report ⓘ

May 17, 2020 – 09:27 am BST

PDB ID : 3ZKG
Title : BACE2 MUTANT APO STRUCTURE
Authors : Banner, D.W.; Kuglstatter, A.; Benz, J.; Stihle, M.; Ruf, A.
Deposited on : 2013-01-23
Resolution : 1.90 Å(reported)

This is a Full wwPDB X-ray Structure Validation Report for a publicly released PDB entry.

We welcome your comments at validation@mail.wwpdb.org

A user guide is available at

<https://www.wwpdb.org/validation/2017/XrayValidationReportHelp>

with specific help available everywhere you see the ⓘ symbol.

The following versions of software and data (see [references ⓘ](#)) were used in the production of this report:

MolProbity : 4.02b-467
Mogul : 1.8.5 (274361), CSD as541be (2020)
Xtriage (Phenix) : 1.13
EDS : 2.11
buster-report : 1.1.7 (2018)
Percentile statistics : 20191225.v01 (using entries in the PDB archive December 25th 2019)
Refmac : 5.8.0158
CCP4 : 7.0.044 (Gargrove)
Ideal geometry (proteins) : Engh & Huber (2001)
Ideal geometry (DNA, RNA) : Parkinson et al. (1996)
Validation Pipeline (wwPDB-VP) : 2.11

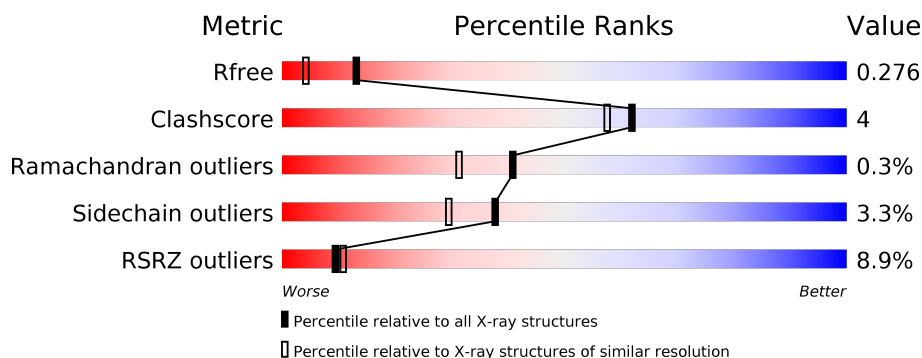
1 Overall quality at a glance ⓘ

The following experimental techniques were used to determine the structure:

X-RAY DIFFRACTION

The reported resolution of this entry is 1.90 Å.

Percentile scores (ranging between 0-100) for global validation metrics of the entry are shown in the following graphic. The table shows the number of entries on which the scores are based.



Metric	Whole archive (#Entries)	Similar resolution (#Entries, resolution range(Å))
R_{free}	130704	6207 (1.90-1.90)
Clashscore	141614	6847 (1.90-1.90)
Ramachandran outliers	138981	6760 (1.90-1.90)
Sidechain outliers	138945	6760 (1.90-1.90)
RSRZ outliers	127900	6082 (1.90-1.90)

The table below summarises the geometric issues observed across the polymeric chains and their fit to the electron density. The red, orange, yellow and green segments on the lower bar indicate the fraction of residues that contain outliers for ≥ 3 , 2, 1 and 0 types of geometric quality criteria respectively. A grey segment represents the fraction of residues that are not modelled. The numeric value for each fraction is indicated below the corresponding segment, with a dot representing fractions $\leq 5\%$. The upper red bar (where present) indicates the fraction of residues that have poor fit to the electron density. The numeric value is given above the bar.

Mol	Chain	Length	Quality of chain
1	A	386	<div> <div>4%</div> <div> <div></div> <div>84%</div> <div>10%</div> <div>6%</div> </div> </div>
1	B	386	<div> <div>12%</div> <div> <div></div> <div>84%</div> <div>9%</div> <div>7%</div> </div> </div>

2 Entry composition [i](#)

There are 3 unique types of molecules in this entry. The entry contains 5954 atoms, of which 0 are hydrogens and 0 are deuteriums.

In the tables below, the ZeroOcc column contains the number of atoms modelled with zero occupancy, the AltConf column contains the number of residues with at least one atom in alternate conformation and the Trace column contains the number of residues modelled with at most 2 atoms.

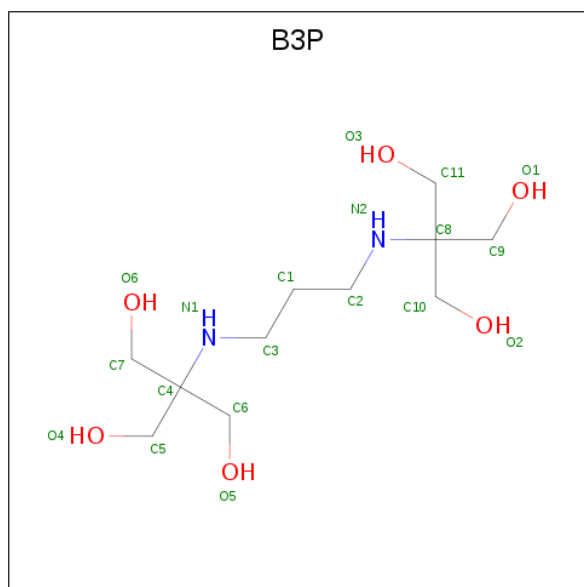
- Molecule 1 is a protein called BETA-SECRETASE 2.

Mol	Chain	Residues	Atoms					ZeroOcc	AltConf	Trace
1	A	364	Total	C	N	O	S	0	3	0
			2848	1838	454	543	13			
1	B	359	Total	C	N	O	S	0	1	0
			2785	1793	445	534	13			

There are 2 discrepancies between the modelled and reference sequences:

Chain	Residue	Modelled	Actual	Comment	Reference
A	269	ALA	GLU	engineered mutation	UNP Q9Y5Z0
B	269	ALA	GLU	engineered mutation	UNP Q9Y5Z0

- Molecule 2 is 2-[3-(2-HYDROXY-1,1-DIHYDROXYMETHYL-ETHYLAMINO)-PROPYL AMINO]-2-HYDROXYMETHYL-PROPANE-1,3-DIOL (three-letter code: B3P) (formula: $C_{11}H_{26}N_2O_6$).



Mol	Chain	Residues	Atoms				ZeroOcc	AltConf
2	A	1	Total	C	N	O	0	0
			19	11	2	6		

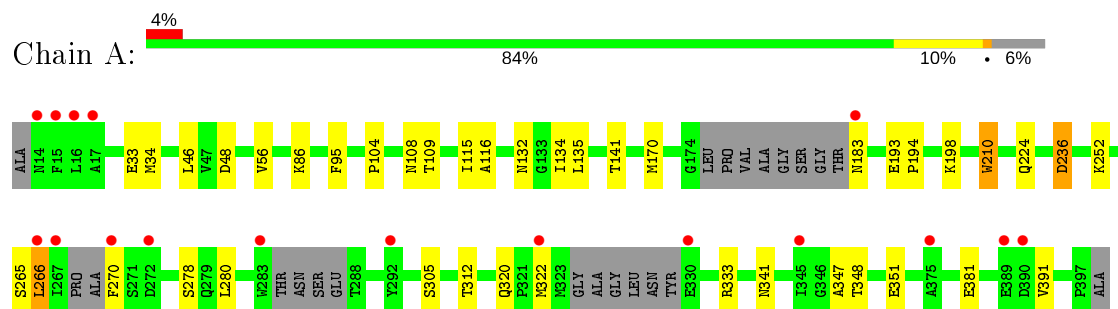
- Molecule 3 is water.

Mol	Chain	Residues	Atoms		ZeroOcc	AltConf
3	A	199	Total	O	0	0
			199	199		
3	B	103	Total	O	0	0
			103	103		

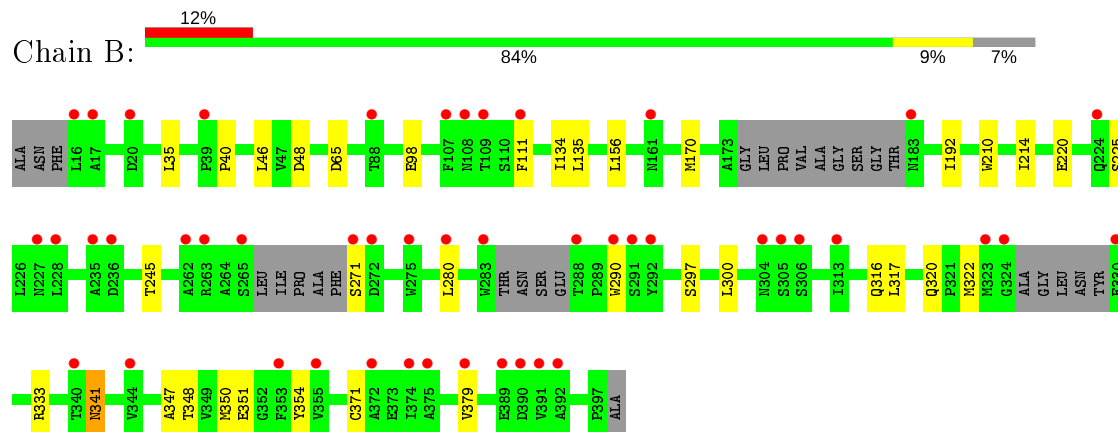
3 Residue-property plots [i](#)

These plots are drawn for all protein, RNA and DNA chains in the entry. The first graphic for a chain summarises the proportions of the various outlier classes displayed in the second graphic. The second graphic shows the sequence view annotated by issues in geometry and electron density. Residues are color-coded according to the number of geometric quality criteria for which they contain at least one outlier: green = 0, yellow = 1, orange = 2 and red = 3 or more. A red dot above a residue indicates a poor fit to the electron density ($RSRZ > 2$). Stretches of 2 or more consecutive residues without any outlier are shown as a green connector. Residues present in the sample, but not in the model, are shown in grey.

• Molecule 1: BETA-SECRETASE 2



• Molecule 1: BETA-SECRETASE 2



4 Data and refinement statistics

Property	Value	Source
Space group	P 1 21 1	Depositor
Cell constants a, b, c, α , β , γ	46.89Å 88.47Å 98.57Å 90.00° 96.58° 90.00°	Depositor
Resolution (Å)	32.82 – 1.90 32.82 – 1.90	Depositor EDS
% Data completeness (in resolution range)	97.2 (32.82-1.90) 97.2 (32.82-1.90)	Depositor EDS
R_{merge}	0.01	Depositor
R_{sym}	(Not available)	Depositor
$\langle I/\sigma(I) \rangle$ ¹	2.33 (at 1.89Å)	Xtriage
Refinement program	REFMAC 5.7.0029	Depositor
R, R_{free}	0.228 , 0.273 0.231 , 0.276	Depositor DCC
R_{free} test set	3101 reflections (5.07%)	wwPDB-VP
Wilson B-factor (Å ²)	19.4	Xtriage
Anisotropy	0.088	Xtriage
Bulk solvent k_{sol} (e/Å ³), B_{sol} (Å ²)	0.36 , 51.0	EDS
L-test for twinning ²	$\langle L \rangle = 0.41$, $\langle L^2 \rangle = 0.23$	Xtriage
Estimated twinning fraction	No twinning to report.	Xtriage
F_o, F_c correlation	0.91	EDS
Total number of atoms	5954	wwPDB-VP
Average B, all atoms (Å ²)	27.0	wwPDB-VP

Xtriage's analysis on translational NCS is as follows: *The largest off-origin peak in the Patterson function is 9.10% of the height of the origin peak. No significant pseudotranslation is detected.*

¹Intensities estimated from amplitudes.

²Theoretical values of $\langle |L| \rangle$, $\langle L^2 \rangle$ for acentric reflections are 0.5, 0.333 respectively for untwinned datasets, and 0.375, 0.2 for perfectly twinned datasets.

5 Model quality

5.1 Standard geometry

Bond lengths and bond angles in the following residue types are not validated in this section: B3P

The Z score for a bond length (or angle) is the number of standard deviations the observed value is removed from the expected value. A bond length (or angle) with $|Z| > 5$ is considered an outlier worth inspection. RMSZ is the root-mean-square of all Z scores of the bond lengths (or angles).

Mol	Chain	Bond lengths		Bond angles	
		RMSZ	# Z >5	RMSZ	# Z >5
1	A	0.59	0/2916	0.72	0/3961
1	B	0.43	0/2851	0.62	0/3873
All	All	0.52	0/5767	0.67	0/7834

There are no bond length outliers.

There are no bond angle outliers.

There are no chirality outliers.

There are no planarity outliers.

5.2 Too-close contacts

In the following table, the Non-H and H(model) columns list the number of non-hydrogen atoms and hydrogen atoms in the chain respectively. The H(added) column lists the number of hydrogen atoms added and optimized by MolProbity. The Clashes column lists the number of clashes within the asymmetric unit, whereas Symm-Clashes lists symmetry related clashes.

Mol	Chain	Non-H	H(model)	H(added)	Clashes	Symm-Clashes
1	A	2848	0	2772	26	0
1	B	2785	0	2708	24	0
2	A	19	0	26	0	0
3	A	199	0	0	3	0
3	B	103	0	0	1	0
All	All	5954	0	5506	49	0

The all-atom clashscore is defined as the number of clashes found per 1000 atoms (including hydrogen atoms). The all-atom clashscore for this structure is 4.

All (49) close contacts within the same asymmetric unit are listed below, sorted by their clash magnitude.

Atom-1	Atom-2	Interatomic distance (Å)	Clash overlap (Å)
1:A:48:ASP:HB2	1:A:134[B]:ILE:HD11	1.56	0.88
1:A:170:MET:HE1	1:A:347:ALA:HB1	1.69	0.75
1:B:48:ASP:HB3	1:B:134[B]:ILE:HD11	1.69	0.74
1:A:46:LEU:HD23	1:A:134[B]:ILE:HD13	1.71	0.72
1:B:316:GLN:HB2	1:B:379:VAL:HG23	1.70	0.72
1:A:48:ASP:CB	1:A:134[B]:ILE:HD11	2.18	0.71
1:A:170:MET:CE	1:A:351:GLU:HG3	2.22	0.69
1:A:46:LEU:HD23	1:A:134[B]:ILE:CD1	2.22	0.69
1:B:48:ASP:CB	1:B:134[B]:ILE:HD11	2.28	0.63
1:A:236:ASP:HB2	1:A:341:ASN:O	2.00	0.62
1:B:245:THR:O	1:B:348:THR:HG23	2.04	0.58
1:A:48:ASP:OD2	1:A:134[A]:ILE:HD11	2.03	0.58
1:B:317:LEU:HG	1:B:379:VAL:HG22	1.85	0.57
1:B:290:TRP:CD2	1:B:316:GLN:HG3	2.39	0.56
1:B:320:GLN:HE22	1:B:348:THR:CG2	2.17	0.56
1:B:170:MET:HE1	1:B:347:ALA:HA	1.88	0.55
1:A:170:MET:HE2	1:A:351:GLU:HG3	1.87	0.54
1:A:34:MET:CE	1:A:135:LEU:HD22	2.39	0.53
1:B:46:LEU:HD23	1:B:134[B]:ILE:HD13	1.92	0.51
1:A:320:GLN:HE22	1:A:348:THR:HG21	1.75	0.51
1:A:141:THR:CG2	1:A:210:TRP:HA	2.41	0.51
1:A:33:GLU:OE1	3:A:2005:HOH:O	2.20	0.50
1:A:170:MET:HE1	1:A:347:ALA:CB	2.41	0.50
1:B:320:GLN:HE22	1:B:348:THR:HG22	1.76	0.50
1:A:280:LEU:HD12	1:B:280:LEU:HD12	1.94	0.49
1:A:333:ARG:NH1	3:A:2183:HOH:O	2.45	0.49
1:A:46:LEU:HB3	1:A:134[B]:ILE:HD12	1.94	0.48
1:B:271:SER:N	3:B:2085:HOH:O	2.47	0.48
1:A:34:MET:HE1	1:A:135:LEU:HD22	1.96	0.48
1:B:220:GLU:HB3	1:B:297:SER:HB2	1.95	0.47
1:A:109:THR:HA	3:A:2081:HOH:O	2.13	0.47
1:B:192:ILE:HG23	1:B:354:TYR:HE2	1.80	0.47
1:B:111:PHE:CZ	1:B:156:LEU:HD13	2.50	0.46
1:A:56:VAL:CG2	1:A:115:ILE:HD11	2.45	0.45
1:B:341:ASN:OD1	1:B:341:ASN:N	2.50	0.45
1:B:316:GLN:HB2	1:B:379:VAL:CG2	2.44	0.44
1:B:35:LEU:HB3	1:B:40:PRO:HB3	1.99	0.44
1:A:265:SER:O	1:A:266:LEU:CB	2.66	0.43
1:A:95:PHE:O	1:A:116:ALA:HA	2.18	0.43
1:B:214:ILE:HD12	1:B:300:LEU:HD22	2.02	0.42
1:B:170:MET:HE3	1:B:351:GLU:HG3	2.01	0.42
1:A:312:THR:HB	1:A:381:GLU:HB2	2.01	0.42

Continued on next page...

Continued from previous page...

Atom-1	Atom-2	Interatomic distance (Å)	Clash overlap (Å)
1:B:290:TRP:CG	1:B:316:GLN:HG3	2.54	0.42
1:A:193:GLU:HA	1:A:194:PRO:HD2	1.96	0.42
1:A:104:PRO:O	1:A:108:ASN:ND2	2.51	0.42
1:B:134[B]:ILE:HD12	1:B:135:LEU:N	2.35	0.41
1:B:320:GLN:HE22	1:B:348:THR:HG21	1.85	0.41
1:A:265:SER:O	1:A:266:LEU:HB2	2.20	0.41
1:B:170:MET:HE1	1:B:350:MET:HB2	2.01	0.41

There are no symmetry-related clashes.

5.3 Torsion angles [i](#)

5.3.1 Protein backbone [i](#)

In the following table, the Percentiles column shows the percent Ramachandran outliers of the chain as a percentile score with respect to all X-ray entries followed by that with respect to entries of similar resolution.

The Analysed column shows the number of residues for which the backbone conformation was analysed, and the total number of residues.

Mol	Chain	Analysed	Favoured	Allowed	Outliers	Percentiles	
1	A	357/386 (92%)	344 (96%)	12 (3%)	1 (0%)	41	31
1	B	350/386 (91%)	337 (96%)	12 (3%)	1 (0%)	41	31
All	All	707/772 (92%)	681 (96%)	24 (3%)	2 (0%)	41	31

All (2) Ramachandran outliers are listed below:

Mol	Chain	Res	Type
1	A	266	LEU
1	B	341	ASN

5.3.2 Protein sidechains [i](#)

In the following table, the Percentiles column shows the percent sidechain outliers of the chain as a percentile score with respect to all X-ray entries followed by that with respect to entries of similar resolution.

The Analysed column shows the number of residues for which the sidechain conformation was analysed, and the total number of residues.

Mol	Chain	Analysed	Rotameric	Outliers	Percentiles	
1	A	309/319 (97%)	296 (96%)	13 (4%)	30	20
1	B	302/319 (95%)	295 (98%)	7 (2%)	50	45
All	All	611/638 (96%)	591 (97%)	20 (3%)	38	29

All (20) residues with a non-rotameric sidechain are listed below:

Mol	Chain	Res	Type
1	A	86	LYS
1	A	132	ASN
1	A	183	ASN
1	A	198	LYS
1	A	210	TRP
1	A	224	GLN
1	A	236	ASP
1	A	252	LYS
1	A	270	PHE
1	A	278	SER
1	A	305	SER
1	A	322	MET
1	A	391	VAL
1	B	65	ASP
1	B	98	GLU
1	B	210	TRP
1	B	225	SER
1	B	322	MET
1	B	333	ARG
1	B	371	CYS

Some sidechains can be flipped to improve hydrogen bonding and reduce clashes. All (2) such sidechains are listed below:

Mol	Chain	Res	Type
1	A	224	GLN
1	B	320	GLN

5.3.3 RNA ⓘ

There are no RNA molecules in this entry.

5.4 Non-standard residues in protein, DNA, RNA chains [i](#)

There are no non-standard protein/DNA/RNA residues in this entry.

5.5 Carbohydrates [i](#)

There are no carbohydrates in this entry.

5.6 Ligand geometry [i](#)

1 ligand is modelled in this entry.

In the following table, the Counts columns list the number of bonds (or angles) for which Mogul statistics could be retrieved, the number of bonds (or angles) that are observed in the model and the number of bonds (or angles) that are defined in the Chemical Component Dictionary. The Link column lists molecule types, if any, to which the group is linked. The Z score for a bond length (or angle) is the number of standard deviations the observed value is removed from the expected value. A bond length (or angle) with $|Z| > 2$ is considered an outlier worth inspection. RMSZ is the root-mean-square of all Z scores of the bond lengths (or angles).

Mol	Type	Chain	Res	Link	Bond lengths			Bond angles		
					Counts	RMSZ	$\# Z > 2$	Counts	RMSZ	$\# Z > 2$
2	B3P	A	1000	-	18,18,18	0.58	0	21,23,23	2.31	5 (23%)

In the following table, the Chirals column lists the number of chiral outliers, the number of chiral centers analysed, the number of these observed in the model and the number defined in the Chemical Component Dictionary. Similar counts are reported in the Torsion and Rings columns. '-' means no outliers of that kind were identified.

Mol	Type	Chain	Res	Link	Chirals	Torsions	Rings
2	B3P	A	1000	-	-	14/28/28/28	-

There are no bond length outliers.

All (5) bond angle outliers are listed below:

Mol	Chain	Res	Type	Atoms	Z	Observed(°)	Ideal(°)
2	A	1000	B3P	C2-N2-C8	6.80	125.73	116.08
2	A	1000	B3P	C3-N1-C4	5.99	124.58	116.08
2	A	1000	B3P	C11-C8-C10	2.74	115.84	110.04
2	A	1000	B3P	O3-C11-C8	-2.27	107.05	111.63
2	A	1000	B3P	C9-C8-N2	2.22	115.69	109.03

There are no chirality outliers.

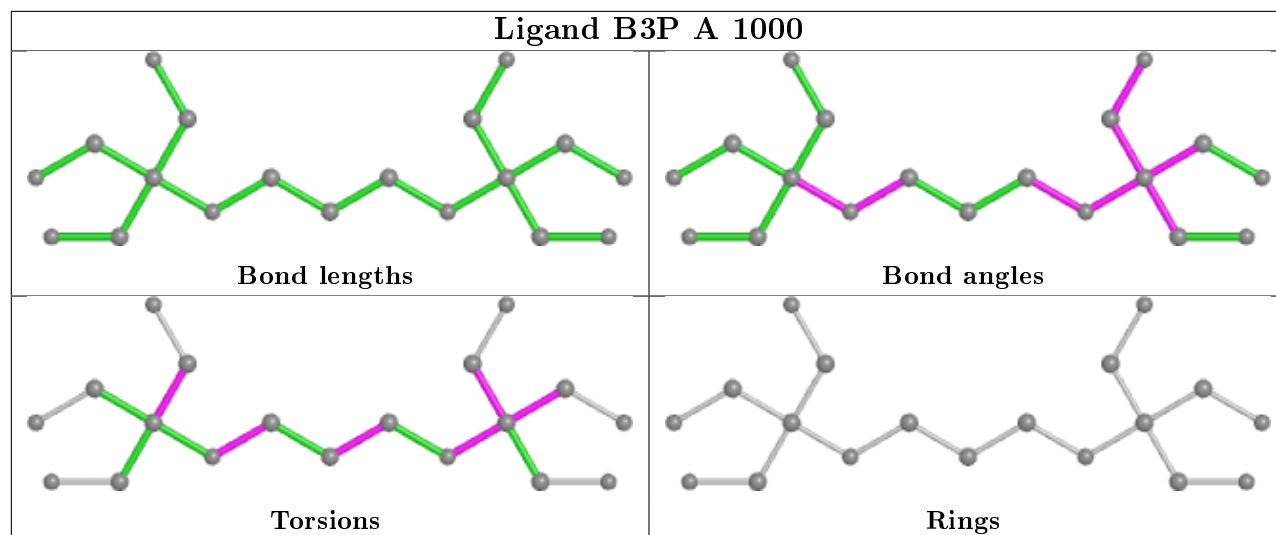
All (14) torsion outliers are listed below:

Mol	Chain	Res	Type	Atoms
2	A	1000	B3P	N1-C4-C5-O4
2	A	1000	B3P	C6-C4-C5-O4
2	A	1000	B3P	C7-C4-C5-O4
2	A	1000	B3P	C9-C8-N2-C2
2	A	1000	B3P	C10-C8-N2-C2
2	A	1000	B3P	C11-C8-N2-C2
2	A	1000	B3P	O2-C10-C8-N2
2	A	1000	B3P	O2-C10-C8-C9
2	A	1000	B3P	O2-C10-C8-C11
2	A	1000	B3P	C3-C1-C2-N2
2	A	1000	B3P	O3-C11-C8-C9
2	A	1000	B3P	C1-C3-N1-C4
2	A	1000	B3P	O3-C11-C8-C10
2	A	1000	B3P	O3-C11-C8-N2

There are no ring outliers.

No monomer is involved in short contacts.

The following is a two-dimensional graphical depiction of Mogul quality analysis of bond lengths, bond angles, torsion angles, and ring geometry for all instances of the Ligand of Interest. In addition, ligands with molecular weight > 250 and outliers as shown on the validation Tables will also be included. For torsion angles, if less than 5% of the Mogul distribution of torsion angles is within 10 degrees of the torsion angle in question, then that torsion angle is considered an outlier. Any bond that is central to one or more torsion angles identified as an outlier by Mogul will be highlighted in the graph. For rings, the root-mean-square deviation (RMSD) between the ring in question and similar rings identified by Mogul is calculated over all ring torsion angles. If the average RMSD is greater than 60 degrees and the minimal RMSD between the ring in question and any Mogul-identified rings is also greater than 60 degrees, then that ring is considered an outlier. The outliers are highlighted in purple. The color gray indicates Mogul did not find sufficient equivalents in the CSD to analyse the geometry.



5.7 Other polymers [i](#)

There are no such residues in this entry.

5.8 Polymer linkage issues [i](#)

There are no chain breaks in this entry.

6 Fit of model and data ⓘ

6.1 Protein, DNA and RNA chains ⓘ

In the following table, the column labelled ‘#RSRZ> 2’ contains the number (and percentage) of RSRZ outliers, followed by percent RSRZ outliers for the chain as percentile scores relative to all X-ray entries and entries of similar resolution. The OWAB column contains the minimum, median, 95th percentile and maximum values of the occupancy-weighted average B-factor per residue. The column labelled ‘Q< 0.9’ lists the number of (and percentage) of residues with an average occupancy less than 0.9.

Mol	Chain	Analysed	<RSRZ>	#RSRZ>2	OWAB(Å ²)	Q<0.9
1	A	364/386 (94%)	0.25	17 (4%) 31 34	9, 19, 37, 60	11 (3%)
1	B	359/386 (93%)	0.88	47 (13%) 3 3	18, 33, 53, 69	15 (4%)
All	All	723/772 (93%)	0.56	64 (8%) 9 11	9, 26, 51, 69	26 (3%)

All (64) RSRZ outliers are listed below:

Mol	Chain	Res	Type	RSRZ
1	B	16	LEU	6.2
1	B	375	ALA	5.9
1	B	183	ASN	5.8
1	B	283	TRP	5.6
1	B	265	SER	5.3
1	A	16	LEU	5.0
1	B	17	ALA	5.0
1	B	288	THR	4.8
1	B	323	MET	4.2
1	B	306	SER	4.2
1	B	108	ASN	4.1
1	B	235	ALA	3.9
1	A	14	ASN	3.8
1	B	227	ASN	3.8
1	B	107	PHE	3.8
1	B	292	TYR	3.6
1	A	270	PHE	3.5
1	A	292	TYR	3.5
1	B	161	ASN	3.4
1	B	391	VAL	3.2
1	B	263	ARG	3.2
1	B	88	THR	3.2
1	B	305	SER	3.2
1	A	267	ILE	3.2

Continued on next page...

Continued from previous page...

Mol	Chain	Res	Type	RSRZ
1	B	290	TRP	3.1
1	A	15	PHE	3.1
1	B	355	VAL	3.1
1	B	340	THR	3.0
1	A	390	ASP	3.0
1	B	224	GLN	3.0
1	A	389	GLU	2.9
1	B	280	LEU	2.9
1	A	322	MET	2.9
1	A	283	TRP	2.9
1	B	374	ILE	2.9
1	B	389	GLU	2.8
1	A	266	LEU	2.8
1	B	262	ALA	2.7
1	B	304	ASN	2.7
1	B	228	LEU	2.7
1	B	353	PHE	2.6
1	A	375	ALA	2.6
1	B	324	GLY	2.5
1	A	183	ASN	2.5
1	B	39	PRO	2.5
1	B	372	ALA	2.5
1	B	392	ALA	2.5
1	A	345	ILE	2.4
1	B	109	THR	2.4
1	B	313	ILE	2.3
1	A	17	ALA	2.3
1	B	236	ASP	2.3
1	A	272	ASP	2.2
1	B	20	ASP	2.2
1	B	271	SER	2.2
1	B	390	ASP	2.2
1	B	291	SER	2.1
1	B	330	GLU	2.1
1	B	275	TRP	2.1
1	B	111	PHE	2.1
1	A	330	GLU	2.0
1	B	272	ASP	2.0
1	B	344	VAL	2.0
1	B	379	VAL	2.0

6.2 Non-standard residues in protein, DNA, RNA chains [i](#)

There are no non-standard protein/DNA/RNA residues in this entry.

6.3 Carbohydrates [i](#)

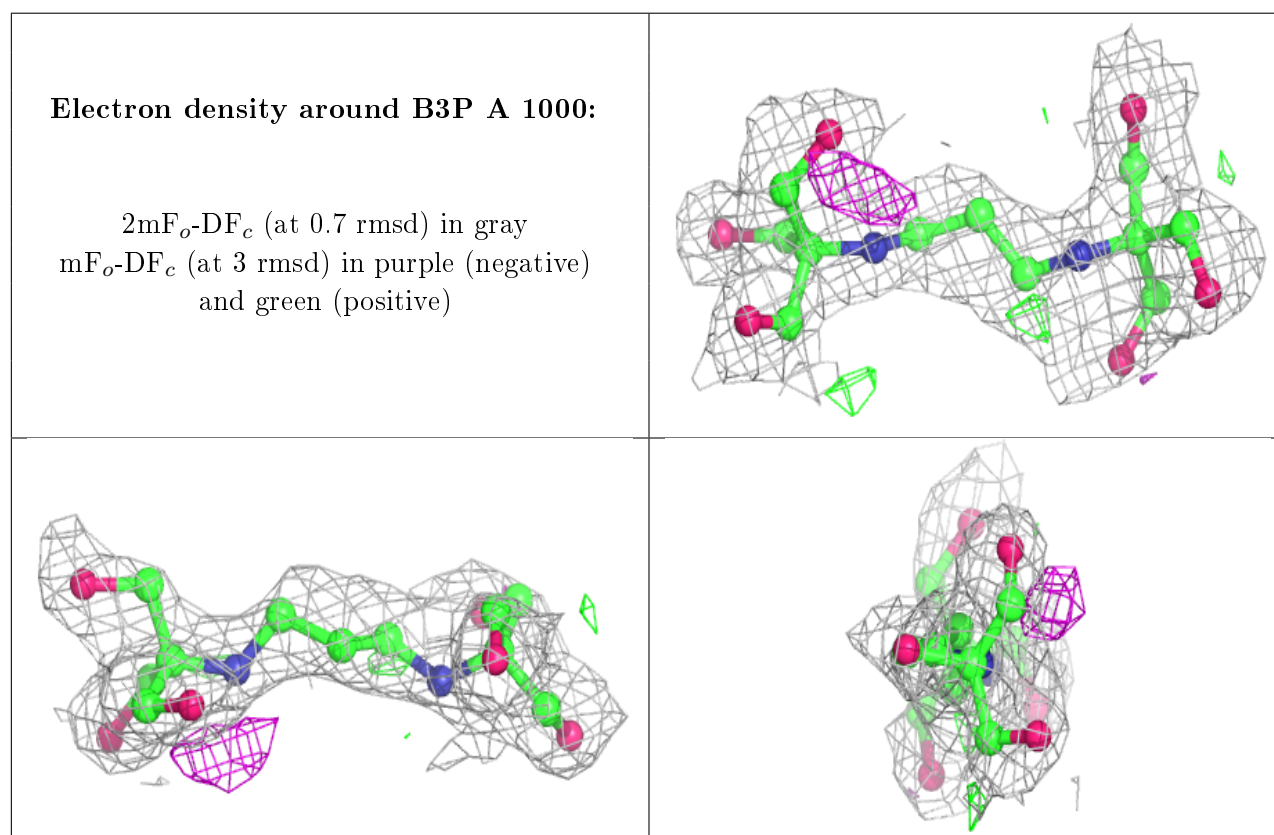
There are no carbohydrates in this entry.

6.4 Ligands [i](#)

In the following table, the Atoms column lists the number of modelled atoms in the group and the number defined in the chemical component dictionary. The B-factors column lists the minimum, median, 95th percentile and maximum values of B factors of atoms in the group. The column labelled 'Q< 0.9' lists the number of atoms with occupancy less than 0.9.

Mol	Type	Chain	Res	Atoms	RSCC	RSR	B-factors(\AA^2)	Q<0.9
2	B3P	A	1000	19/19	0.81	0.21	27,37,46,47	0

The following is a graphical depiction of the model fit to experimental electron density of all instances of the Ligand of Interest. In addition, ligands with molecular weight > 250 and outliers as shown on the geometry validation Tables will also be included. Each fit is shown from different orientation to approximate a three-dimensional view.



6.5 Other polymers [i](#)

There are no such residues in this entry.