



wwPDB X-ray Structure Validation Summary Report ⓘ

Aug 6, 2020 – 07:55 PM BST

PDB ID : 2ZNH
Title : Crystal Structure of a Domain-Swapped Serpin Dimer
Authors : Yamasaki, M.; Huntington, J.A.
Deposited on : 2008-04-25
Resolution : 2.80 Å(reported)

This is a wwPDB X-ray Structure Validation Summary Report for a publicly released PDB entry.

We welcome your comments at validation@mail.wwpdb.org

A user guide is available at

<https://www.wwpdb.org/validation/2017/XrayValidationReportHelp>

with specific help available everywhere you see the ⓘ symbol.

The following versions of software and data (see [references ⓘ](#)) were used in the production of this report:

MolProbity : 4.02b-467
Mogul : 1.8.5 (274361), CSD as541be (2020)
Xtriage (Phenix) : 1.13
EDS : 2.13.1
Percentile statistics : 20191225.v01 (using entries in the PDB archive December 25th 2019)
Refmac : 5.8.0158
CCP4 : 7.0.044 (Gargrove)
Ideal geometry (proteins) : Engh & Huber (2001)
Ideal geometry (DNA, RNA) : Parkinson et al. (1996)
Validation Pipeline (wwPDB-VP) : 2.13.1

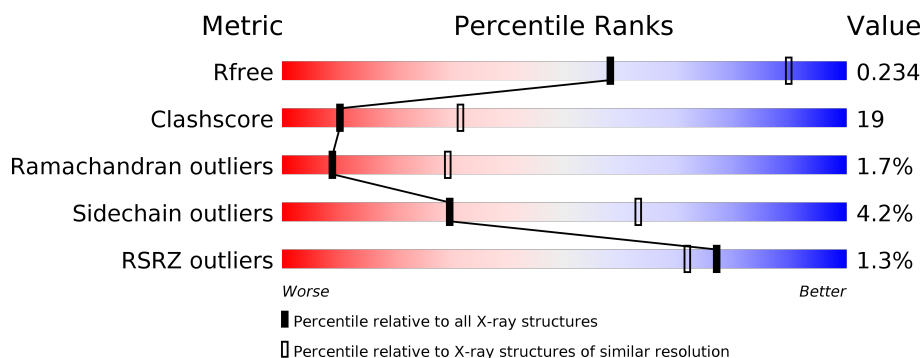
1 Overall quality at a glance

The following experimental techniques were used to determine the structure:

X-RAY DIFFRACTION

The reported resolution of this entry is 2.80 Å.

Percentile scores (ranging between 0-100) for global validation metrics of the entry are shown in the following graphic. The table shows the number of entries on which the scores are based.



Metric	Whole archive (#Entries)	Similar resolution (#Entries, resolution range(Å))
R_{free}	130704	3140 (2.80-2.80)
Clashscore	141614	3569 (2.80-2.80)
Ramachandran outliers	138981	3498 (2.80-2.80)
Sidechain outliers	138945	3500 (2.80-2.80)
RSRZ outliers	127900	3078 (2.80-2.80)

The table below summarises the geometric issues observed across the polymeric chains and their fit to the electron density. The red, orange, yellow and green segments on the lower bar indicate the fraction of residues that contain outliers for ≥ 3 , 2, 1 and 0 types of geometric quality criteria respectively. A grey segment represents the fraction of residues that are not modelled. The numeric value for each fraction is indicated below the corresponding segment, with a dot representing fractions $\leq 5\%$. The upper red bar (where present) indicates the fraction of residues that have poor fit to the electron density. The numeric value is given above the bar.

Mol	Chain	Length	Quality of chain
1	A	432	<div> <div>%</div> <div> <div></div> <div>62%</div> <div>29%</div> <div>• 6%</div> </div> </div>
1	B	432	<div> <div>2%</div> <div> <div></div> <div>63%</div> <div>31%</div> <div>• 5%</div> </div> </div>
2	C	2	<div> <div></div> <div>50%</div> <div>50%</div> </div>
3	D	3	<div> <div></div> <div>33%</div> <div>33%</div> <div>33%</div> </div>
3	E	3	<div> <div></div> <div>33%</div> <div>67%</div> </div>

The following table lists non-polymeric compounds, carbohydrate monomers and non-standard residues in protein, DNA, RNA chains that are outliers for geometric or electron-density-fit criteria:

Mol	Type	Chain	Res	Chirality	Geometry	Clashes	Electron density
2	NAG	C	2	-	-	-	X
3	MAN	D	3	-	-	-	X
3	MAN	E	3	-	-	-	X
4	NAG	A	701	-	-	-	X

2 Entry composition [i](#)

There are 6 unique types of molecules in this entry. The entry contains 6599 atoms, of which 0 are hydrogens and 0 are deuteriums.

In the tables below, the ZeroOcc column contains the number of atoms modelled with zero occupancy, the AltConf column contains the number of residues with at least one atom in alternate conformation and the Trace column contains the number of residues modelled with at most 2 atoms.

- Molecule 1 is a protein called Antithrombin-III.

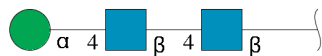
Mol	Chain	Residues	Atoms					ZeroOcc	AltConf	Trace
1	A	408	Total	C	N	O	S	0	0	0
			3156	2026	523	589	18			
1	B	412	Total	C	N	O	S	0	0	0
			3192	2045	530	599	18			

- Molecule 2 is an oligosaccharide called 2-acetamido-2-deoxy-beta-D-glucopyranose-(1-4)-2-acetamido-2-deoxy-beta-D-glucopyranose.



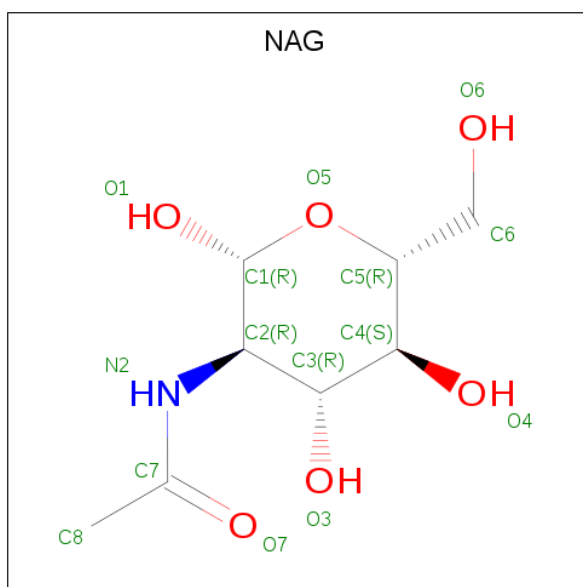
Mol	Chain	Residues	Atoms				ZeroOcc	AltConf	Trace
2	C	2	Total	C	N	O	0	0	0
			28	16	2	10			

- Molecule 3 is an oligosaccharide called alpha-D-mannopyranose-(1-4)-2-acetamido-2-deoxy-beta-D-glucopyranose-(1-4)-2-acetamido-2-deoxy-beta-D-glucopyranose.



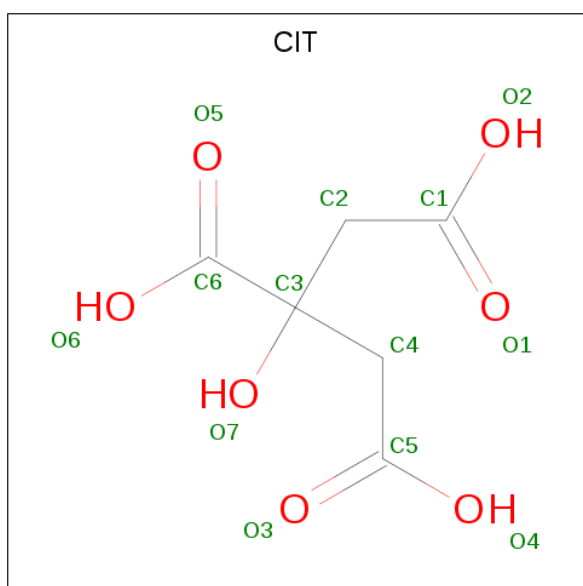
Mol	Chain	Residues	Atoms				ZeroOcc	AltConf	Trace
3	D	3	Total	C	N	O	0	0	0
			39	22	2	15			
3	E	3	Total	C	N	O	0	0	0
			39	22	2	15			

- Molecule 4 is 2-acetamido-2-deoxy-beta-D-glucopyranose (three-letter code: NAG) (formula: C₈H₁₅NO₆).



Mol	Chain	Residues	Atoms				ZeroOcc	AltConf
4	A	1	Total	C	N	O	0	0
			14	8	1	5		
4	B	1	Total	C	N	O	0	0
			14	8	1	5		

- Molecule 5 is CITRIC ACID (three-letter code: CIT) (formula: $C_6H_8O_7$).



Mol	Chain	Residues	Atoms			ZeroOcc	AltConf
5	B	1	Total	C	O	0	0
			13	6	7		
5	B	1	Total	C	O	0	0
			13	6	7		

- Molecule 6 is water.

Mol	Chain	Residues	Atoms		ZeroOcc	AltConf
6	A	36	Total 36	O 36	0	0
6	B	55	Total 55	O 55	0	0

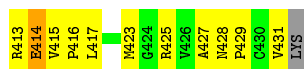
These plots are drawn for all protein, RNA, DNA and oligosaccharide chains in the entry. The first graphic for a chain summarises the proportions of the various outlier classes displayed in the second graphic. The second graphic shows the sequence view annotated by issues in geometry and electron density. Residues are color-coded according to the number of geometric quality criteria for which they contain at least one outlier: green = 0, yellow = 1, orange = 2 and red = 3 or more. A red dot above a residue indicates a poor fit to the electron density ($RSRZ > 2$). Stretches of 2 or more consecutive residues without any outlier are shown as a green connector. Residues present in the sample, but not in the model, are shown in grey.

Chain A:

Chain B:

2% 63% 31% 5%

H1 V5 P12 M17 Y23 E24 S25 E26 E27 LYS LYS ALA THR GLU ASP GLU GLY SER GLU GLN ILE PRO GLU A43 T44 M45 V48 A54 R57 F58 A59 T60 Y63 Q64 H65 L66 M71 D72 M73 D74 F77 T83 S84 T85 A86 M89 A94 D97 Q100 Q101 L102 K107 F108 D109 S112 E113 K114 H120 F123 R132 L135 A136 A137 N144 R145 L146 K150 S151 L152 E163 L164 V165 K169 L170 Q171 D174 F175 K176 A179 R183 A184 H189 V190 K193 V201 I202 P202 A206 V212 L215 V216 T218 W225 K228 F229 R235 Y241 A242 D243 G244 E245 Q254 K257 Y260 R261 R262 R263 A264 E265 G266 Y275 G276 D277 D278 L284 L285 P286 K287 P288 L292 Y295 E296 T300 V303 L304 W307 L308 I311 L316 V317 V318 R322 F323 R324 F329 S330 L331 Q336 D337 M338 G339 L340 V341 D342 L351 P352 V355 A356 E357 G358 R359 L362 S365 G366 K370 L373 E377 F378 G379 R393 S394 L395 R399 V400 T401 F402 A404 K403 K405 R406 P407 F408 L409 V410



- Molecule 2: 2-acetamido-2-deoxy-beta-D-glucopyranose-(1-4)-2-acetamido-2-deoxy-beta-D-glucopyranose



- Molecule 3: alpha-D-mannopyranose-(1-4)-2-acetamido-2-deoxy-beta-D-glucopyranose-(1-4)-2-acetamido-2-deoxy-beta-D-glucopyranose



- Molecule 3: alpha-D-mannopyranose-(1-4)-2-acetamido-2-deoxy-beta-D-glucopyranose-(1-4)-2-acetamido-2-deoxy-beta-D-glucopyranose



4 Data and refinement statistics

Property	Value	Source
Space group	P 1 21 1	Depositor
Cell constants a, b, c, α , β , γ	71.35Å 99.88Å 92.46Å 90.00° 100.62° 90.00°	Depositor
Resolution (Å)	43.77 – 2.80 43.77 – 2.80	Depositor EDS
% Data completeness (in resolution range)	99.5 (43.77-2.80) 99.6 (43.77-2.80)	Depositor EDS
R_{merge}	0.15	Depositor
R_{sym}	0.15	Depositor
$\langle I/\sigma(I) \rangle$ ¹	3.07 (at 2.81Å)	Xtriage
Refinement program	CNS 1.0	Depositor
R, R_{free}	0.201 , 0.247 0.196 , 0.234	Depositor DCC
R_{free} test set	1603 reflections (5.10%)	wwPDB-VP
Wilson B-factor (Å ²)	42.5	Xtriage
Anisotropy	0.051	Xtriage
Bulk solvent k_{sol} (e/Å ³), B_{sol} (Å ²)	0.34 , 52.7	EDS
L-test for twinning ²	$\langle L \rangle = 0.47$, $\langle L^2 \rangle = 0.30$	Xtriage
Estimated twinning fraction	No twinning to report.	Xtriage
F_o, F_c correlation	0.93	EDS
Total number of atoms	6599	wwPDB-VP
Average B, all atoms (Å ²)	40.0	wwPDB-VP

Xtriage's analysis on translational NCS is as follows: *The largest off-origin peak in the Patterson function is 3.84% of the height of the origin peak. No significant pseudotranslation is detected.*

¹Intensities estimated from amplitudes.

²Theoretical values of $\langle |L| \rangle$, $\langle L^2 \rangle$ for acentric reflections are 0.5, 0.333 respectively for untwinned datasets, and 0.375, 0.2 for perfectly twinned datasets.

5 Model quality [i](#)

5.1 Standard geometry [i](#)

Bond lengths and bond angles in the following residue types are not validated in this section: CIT, NAG, MAN

The Z score for a bond length (or angle) is the number of standard deviations the observed value is removed from the expected value. A bond length (or angle) with $|Z| > 5$ is considered an outlier worth inspection. RMSZ is the root-mean-square of all Z scores of the bond lengths (or angles).

Mol	Chain	Bond lengths		Bond angles	
		RMSZ	$\# Z > 5$	RMSZ	$\# Z > 5$
1	A	0.40	0/3222	0.65	1/4369 (0.0%)
1	B	0.38	0/3258	0.64	1/4417 (0.0%)
All	All	0.39	0/6480	0.64	2/8786 (0.0%)

There are no bond length outliers.

All (2) bond angle outliers are listed below:

Mol	Chain	Res	Type	Atoms	Z	Observed(°)	Ideal(°)
1	A	311	LEU	N-CA-C	-7.60	90.49	111.00
1	B	414	GLU	N-CA-C	-5.29	96.70	111.00

There are no chirality outliers.

There are no planarity outliers.

5.2 Too-close contacts [i](#)

In the following table, the Non-H and H(model) columns list the number of non-hydrogen atoms and hydrogen atoms in the chain respectively. The H(added) column lists the number of hydrogen atoms added and optimized by MolProbity. The Clashes column lists the number of clashes within the asymmetric unit, whereas Symm-Clashes lists symmetry related clashes.

Mol	Chain	Non-H	H(model)	H(added)	Clashes	Symm-Clashes
1	A	3156	0	3068	124	0
1	B	3192	0	3094	130	0
2	C	28	0	25	0	0
3	D	39	0	34	2	0
3	E	39	0	34	1	0
4	A	14	0	13	2	0
4	B	14	0	13	0	0

Continued on next page...

Continued from previous page...

Mol	Chain	Non-H	H(model)	H(added)	Clashes	Symm-Clashes
5	B	26	0	11	4	0
6	A	36	0	0	1	0
6	B	55	0	0	8	0
All	All	6599	0	6292	241	0

The all-atom clashscore is defined as the number of clashes found per 1000 atoms (including hydrogen atoms). The all-atom clashscore for this structure is 19.

The worst 5 of 241 close contacts within the same asymmetric unit are listed below, sorted by their clash magnitude.

Atom-1	Atom-2	Interatomic distance (Å)	Clash overlap (Å)
1:B:263:VAL:HG12	1:B:264:ALA:H	1.04	1.09
1:A:263:VAL:HG12	1:A:264:ALA:H	1.13	1.07
1:B:393:ARG:HG2	1:B:394:SER:H	1.35	0.91
1:B:285:LEU:HD13	1:B:408:PHE:HB3	1.53	0.90
1:B:263:VAL:HG12	1:B:264:ALA:N	1.86	0.89

There are no symmetry-related clashes.

5.3 Torsion angles [i](#)

5.3.1 Protein backbone [i](#)

In the following table, the Percentiles column shows the percent Ramachandran outliers of the chain as a percentile score with respect to all X-ray entries followed by that with respect to entries of similar resolution.

The Analysed column shows the number of residues for which the backbone conformation was analysed, and the total number of residues.

Mol	Chain	Analysed	Favoured	Allowed	Outliers	Percentiles	
1	A	402/432 (93%)	367 (91%)	29 (7%)	6 (2%)	10	33
1	B	406/432 (94%)	371 (91%)	27 (7%)	8 (2%)	7	24
All	All	808/864 (94%)	738 (91%)	56 (7%)	14 (2%)	9	29

5 of 14 Ramachandran outliers are listed below:

Mol	Chain	Res	Type
1	B	263	VAL

Continued on next page...

Continued from previous page...

Mol	Chain	Res	Type
1	A	112	SER
1	B	113	GLU
1	B	356	ALA
1	B	359	ARG

5.3.2 Protein sidechains ⓘ

In the following table, the Percentiles column shows the percent sidechain outliers of the chain as a percentile score with respect to all X-ray entries followed by that with respect to entries of similar resolution.

The Analysed column shows the number of residues for which the sidechain conformation was analysed, and the total number of residues.

Mol	Chain	Analysed	Rotameric	Outliers	Percentiles	
1	A	335/383 (88%)	317 (95%)	18 (5%)	22	53
1	B	338/383 (88%)	328 (97%)	10 (3%)	41	75
All	All	673/766 (88%)	645 (96%)	28 (4%)	30	63

5 of 28 residues with a non-rotameric sidechain are listed below:

Mol	Chain	Res	Type
1	A	285	LEU
1	A	316	LEU
1	B	324	ARG
1	A	288	PRO
1	A	304	LEU

Some sidechains can be flipped to improve hydrogen bonding and reduce clashes. 5 of 9 such sidechains are listed below:

Mol	Chain	Res	Type
1	A	418	ASN
1	B	405	ASN
1	B	71	ASN
1	A	305	GLN
1	B	45	ASN

5.3.3 RNA ⓘ

There are no RNA molecules in this entry.

5.4 Non-standard residues in protein, DNA, RNA chains ⓘ

There are no non-standard protein/DNA/RNA residues in this entry.

5.5 Carbohydrates ⓘ

8 monosaccharides are modelled in this entry.

In the following table, the Counts columns list the number of bonds (or angles) for which Mogul statistics could be retrieved, the number of bonds (or angles) that are observed in the model and the number of bonds (or angles) that are defined in the Chemical Component Dictionary. The Link column lists molecule types, if any, to which the group is linked. The Z score for a bond length (or angle) is the number of standard deviations the observed value is removed from the expected value. A bond length (or angle) with $|Z| > 2$ is considered an outlier worth inspection. RMSZ is the root-mean-square of all Z scores of the bond lengths (or angles).

Mol	Type	Chain	Res	Link	Bond lengths			Bond angles		
					Counts	RMSZ	# $ Z > 2$	Counts	RMSZ	# $ Z > 2$
2	NAG	C	1	1,2	14,14,15	0.62	0	17,19,21	0.83	0
2	NAG	C	2	2	14,14,15	0.54	0	17,19,21	0.79	1 (5%)
3	NAG	D	1	1,3	14,14,15	0.60	0	17,19,21	0.75	0
3	NAG	D	2	3	14,14,15	0.49	0	17,19,21	1.06	2 (11%)
3	MAN	D	3	3	11,11,12	0.54	0	15,15,17	0.73	0
3	NAG	E	1	1,3	14,14,15	0.49	0	17,19,21	0.75	0
3	NAG	E	2	3	14,14,15	0.57	0	17,19,21	1.01	1 (5%)
3	MAN	E	3	3	11,11,12	0.90	0	15,15,17	2.00	4 (26%)

In the following table, the Chirals column lists the number of chiral outliers, the number of chiral centers analysed, the number of these observed in the model and the number defined in the Chemical Component Dictionary. Similar counts are reported in the Torsion and Rings columns. '-' means no outliers of that kind were identified.

Mol	Type	Chain	Res	Link	Chirals	Torsions	Rings
2	NAG	C	1	1,2	-	2/6/23/26	0/1/1/1
2	NAG	C	2	2	-	4/6/23/26	0/1/1/1
3	NAG	D	1	1,3	-	4/6/23/26	0/1/1/1
3	NAG	D	2	3	-	4/6/23/26	0/1/1/1
3	MAN	D	3	3	-	2/2/19/22	0/1/1/1
3	NAG	E	1	1,3	-	2/6/23/26	0/1/1/1
3	NAG	E	2	3	-	4/6/23/26	0/1/1/1
3	MAN	E	3	3	-	2/2/19/22	0/1/1/1

There are no bond length outliers.

The worst 5 of 8 bond angle outliers are listed below:

Mol	Chain	Res	Type	Atoms	Z	Observed(°)	Ideal(°)
3	E	3	MAN	C1-O5-C5	4.46	118.24	112.19
3	E	3	MAN	O5-C1-C2	4.32	117.43	110.77
3	E	3	MAN	C1-C2-C3	3.41	113.86	109.67
3	D	2	NAG	C2-N2-C7	-2.49	119.36	122.90
3	E	2	NAG	C2-N2-C7	-2.42	119.46	122.90

There are no chirality outliers.

5 of 24 torsion outliers are listed below:

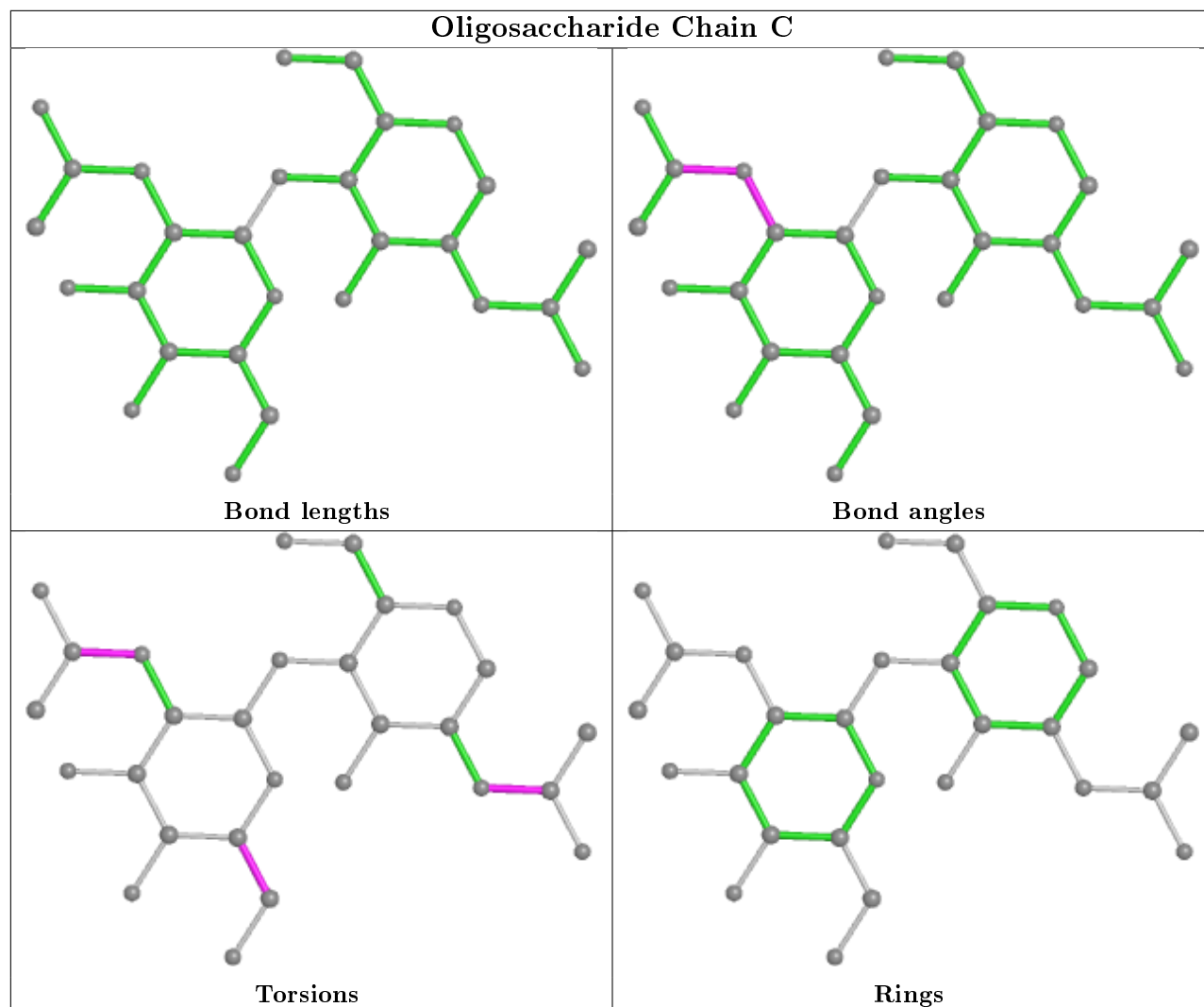
Mol	Chain	Res	Type	Atoms
3	D	2	NAG	C8-C7-N2-C2
3	D	2	NAG	O7-C7-N2-C2
2	C	1	NAG	C8-C7-N2-C2
2	C	1	NAG	O7-C7-N2-C2
2	C	2	NAG	C8-C7-N2-C2

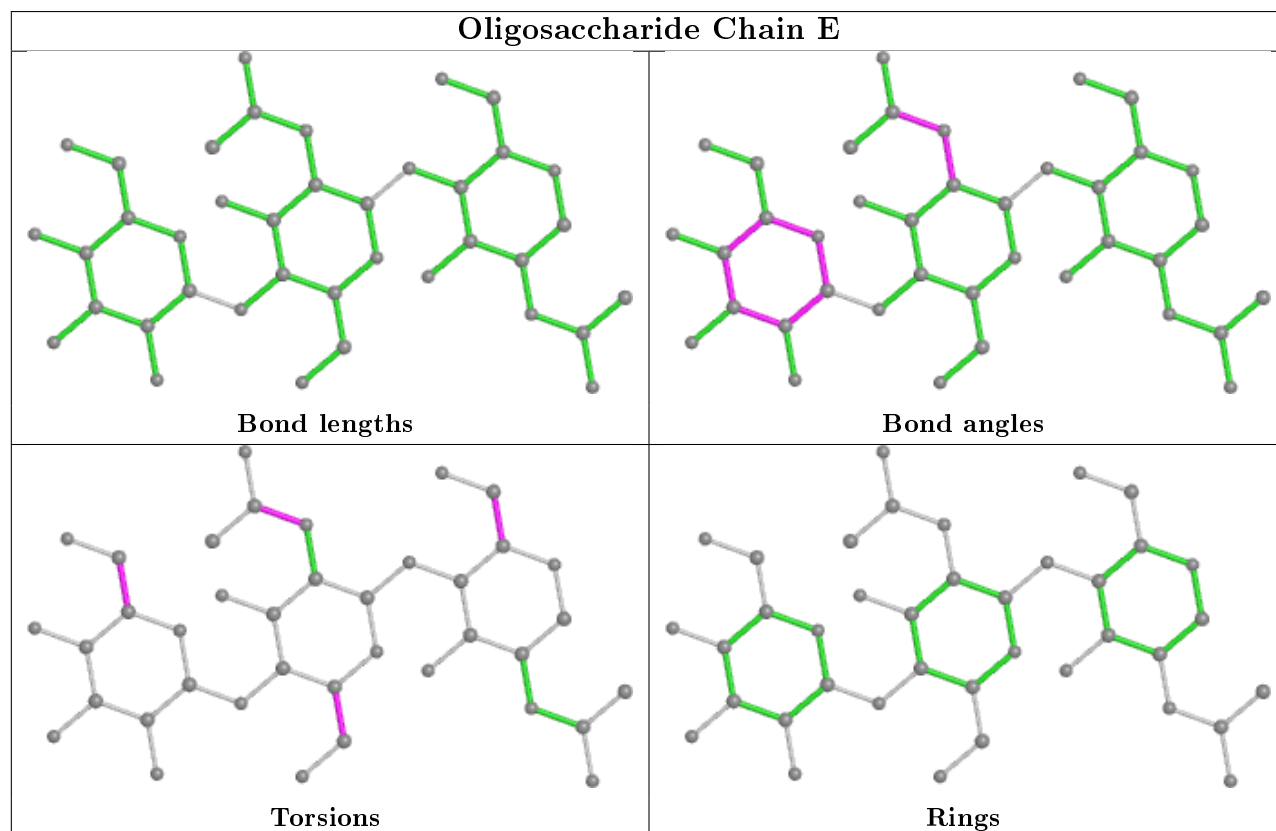
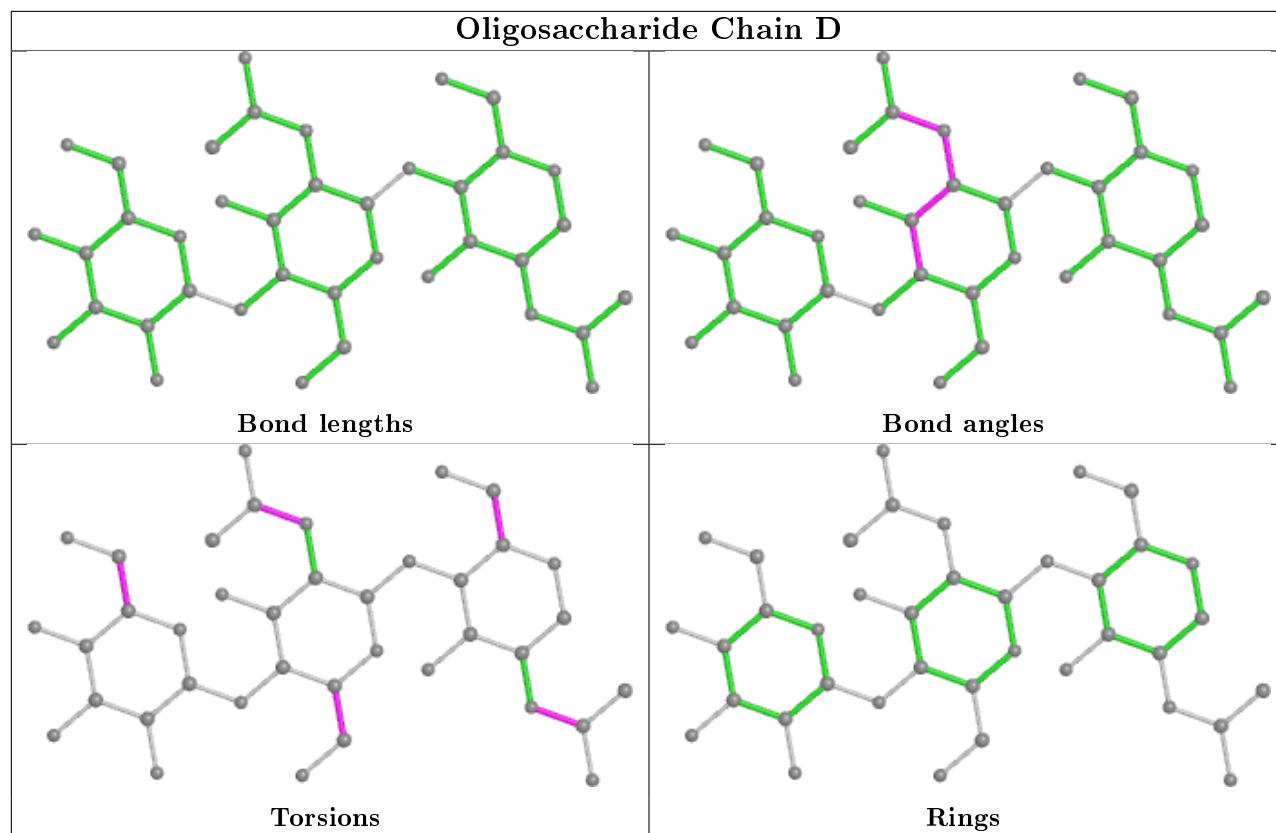
There are no ring outliers.

4 monomers are involved in 3 short contacts:

Mol	Chain	Res	Type	Clashes	Symm-Clashes
3	D	2	NAG	1	0
3	D	1	NAG	1	0
3	E	2	NAG	1	0
3	E	3	MAN	1	0

The following is a two-dimensional graphical depiction of Mogul quality analysis of bond lengths, bond angles, torsion angles, and ring geometry for oligosaccharide.





5.6 Ligand geometry

4 ligands are modelled in this entry.

In the following table, the Counts columns list the number of bonds (or angles) for which Mogul statistics could be retrieved, the number of bonds (or angles) that are observed in the model and the number of bonds (or angles) that are defined in the Chemical Component Dictionary. The Link column lists molecule types, if any, to which the group is linked. The Z score for a bond length (or angle) is the number of standard deviations the observed value is removed from the expected value. A bond length (or angle) with $|Z| > 2$ is considered an outlier worth inspection. RMSZ is the root-mean-square of all Z scores of the bond lengths (or angles).

Mol	Type	Chain	Res	Link	Bond lengths			Bond angles		
					Counts	RMSZ	# $ Z > 2$	Counts	RMSZ	# $ Z > 2$
4	NAG	A	701	1	14,14,15	0.79	1 (7%)	17,19,21	0.84	0
4	NAG	B	501	1	14,14,15	0.54	0	17,19,21	0.60	0
5	CIT	B	605	-	3,12,12	3.37	1 (33%)	3,17,17	2.29	1 (33%)
5	CIT	B	604	-	3,12,12	0.68	0	3,17,17	0.73	0

In the following table, the Chirals column lists the number of chiral outliers, the number of chiral centers analysed, the number of these observed in the model and the number defined in the Chemical Component Dictionary. Similar counts are reported in the Torsion and Rings columns. '-' means no outliers of that kind were identified.

Mol	Type	Chain	Res	Link	Chirals	Torsions	Rings
4	NAG	A	701	1	-	2/6/23/26	0/1/1/1
4	NAG	B	501	1	-	3/6/23/26	0/1/1/1
5	CIT	B	605	-	-	1/6/16/16	-
5	CIT	B	604	-	-	0/6/16/16	-

All (2) bond length outliers are listed below:

Mol	Chain	Res	Type	Atoms	Z	Observed(Å)	Ideal(Å)
5	B	605	CIT	C2-C3	-5.63	1.47	1.54
4	A	701	NAG	C1-C2	2.34	1.55	1.52

All (1) bond angle outliers are listed below:

Mol	Chain	Res	Type	Atoms	Z	Observed(°)	Ideal(°)
5	B	605	CIT	C4-C3-C2	-3.67	99.50	109.33

There are no chirality outliers.

5 of 6 torsion outliers are listed below:

Mol	Chain	Res	Type	Atoms
4	A	701	NAG	C8-C7-N2-C2
4	A	701	NAG	O7-C7-N2-C2
4	B	501	NAG	C8-C7-N2-C2
4	B	501	NAG	O7-C7-N2-C2
5	B	605	CIT	C1-C2-C3-C6

There are no ring outliers.

2 monomers are involved in 6 short contacts:

Mol	Chain	Res	Type	Clashes	Symm-Clashes
4	A	701	NAG	2	0
5	B	605	CIT	4	0

5.7 Other polymers [i](#)

There are no such residues in this entry.

5.8 Polymer linkage issues [i](#)

There are no chain breaks in this entry.

6 Fit of model and data [i](#)

6.1 Protein, DNA and RNA chains [i](#)

In the following table, the column labelled ‘#RSRZ> 2’ contains the number (and percentage) of RSRZ outliers, followed by percent RSRZ outliers for the chain as percentile scores relative to all X-ray entries and entries of similar resolution. The OWAB column contains the minimum, median, 95th percentile and maximum values of the occupancy-weighted average B-factor per residue. The column labelled ‘Q< 0.9’ lists the number of (and percentage) of residues with an average occupancy less than 0.9.

Mol	Chain	Analysed	<RSRZ>	#RSRZ>2	OWAB(Å ²)	Q<0.9
1	A	408/432 (94%)	-0.43	4 (0%) 82 77	14, 40, 63, 82	0
1	B	412/432 (95%)	-0.47	7 (1%) 70 63	16, 36, 58, 81	0
All	All	820/864 (94%)	-0.45	11 (1%) 77 72	14, 38, 61, 82	0

The worst 5 of 11 RSRZ outliers are listed below:

Mol	Chain	Res	Type	RSRZ
1	B	394	SER	3.2
1	B	44	THR	3.1
1	B	43	ALA	2.9
1	B	25	SER	2.8
1	B	26	PRO	2.5

6.2 Non-standard residues in protein, DNA, RNA chains [i](#)

There are no non-standard protein/DNA/RNA residues in this entry.

6.3 Carbohydrates [i](#)

In the following table, the Atoms column lists the number of modelled atoms in the group and the number defined in the chemical component dictionary. The B-factors column lists the minimum, median, 95th percentile and maximum values of B factors of atoms in the group. The column labelled ‘Q< 0.9’ lists the number of atoms with occupancy less than 0.9.

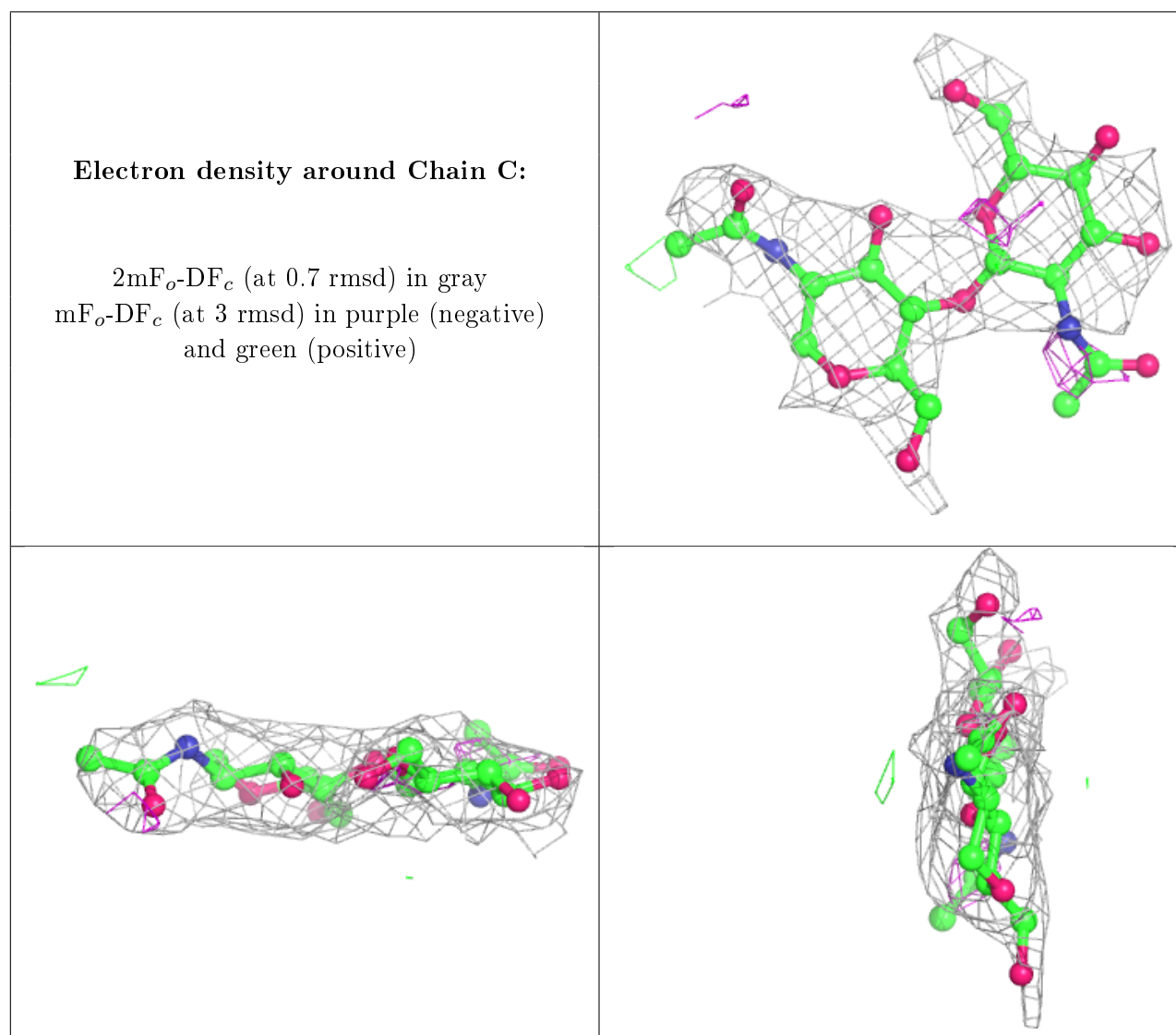
Mol	Type	Chain	Res	Atoms	RSCC	RSR	B-factors(Å ²)	Q<0.9
2	NAG	C	2	14/15	0.65	0.53	90,93,99,99	0
3	MAN	D	3	11/12	0.70	0.49	94,96,97,98	0
3	MAN	E	3	11/12	0.75	0.40	88,92,94,96	0
3	NAG	E	2	14/15	0.81	0.26	55,60,68,78	0
2	NAG	C	1	14/15	0.85	0.24	74,77,82,86	0

Continued on next page...

Continued from previous page...

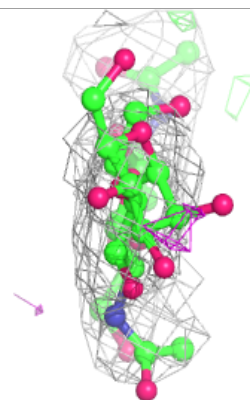
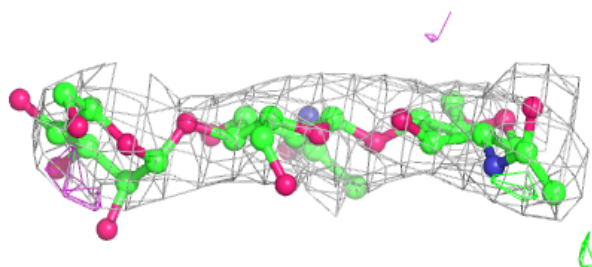
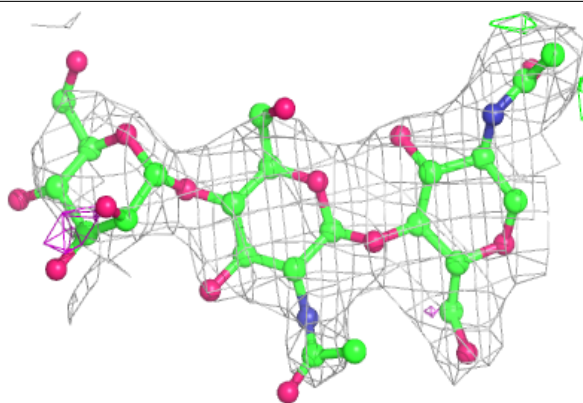
Mol	Type	Chain	Res	Atoms	RSCC	RSR	B-factors(\AA^2)	Q<0.9
3	NAG	D	2	14/15	0.87	0.38	78,84,86,90	0
3	NAG	D	1	14/15	0.95	0.17	52,59,64,70	0
3	NAG	E	1	14/15	0.97	0.14	31,34,37,45	0

The following is a graphical depiction of the model fit to experimental electron density for oligosaccharide. Each fit is shown from different orientation to approximate a three-dimensional view.

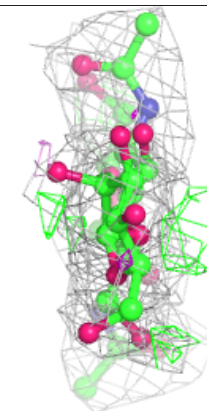
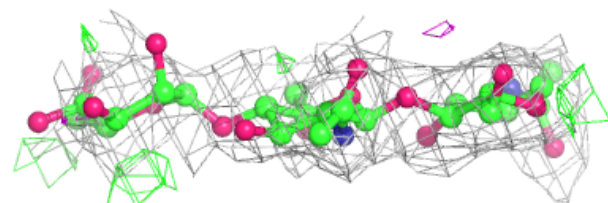
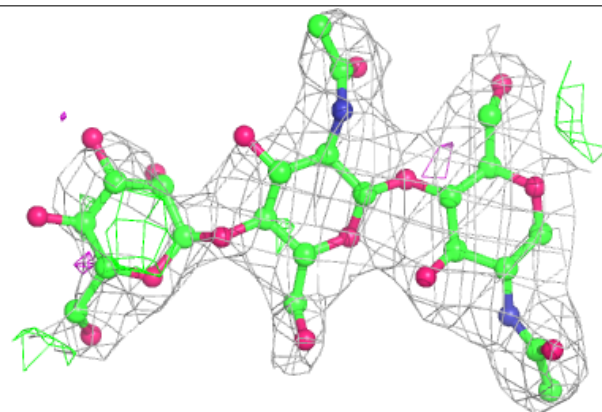


Electron density around Chain D:

$2mF_o-DF_c$ (at 0.7 rmsd) in gray
 mF_o-DF_c (at 3 rmsd) in purple (negative)
and green (positive)

**Electron density around Chain E:**

$2mF_o-DF_c$ (at 0.7 rmsd) in gray
 mF_o-DF_c (at 3 rmsd) in purple (negative)
and green (positive)



6.4 Ligands [i](#)

In the following table, the Atoms column lists the number of modelled atoms in the group and the number defined in the chemical component dictionary. The B-factors column lists the minimum, median, 95th percentile and maximum values of B factors of atoms in the group. The column labelled 'Q<0.9' lists the number of atoms with occupancy less than 0.9.

Mol	Type	Chain	Res	Atoms	RSCC	RSR	B-factors(Å ²)	Q<0.9
5	CIT	B	605	13/13	0.79	0.30	118,118,120,120	0
5	CIT	B	604	13/13	0.79	0.38	132,133,133,134	0
4	NAG	A	701	14/15	0.80	0.43	77,81,82,82	0
4	NAG	B	501	14/15	0.88	0.24	58,61,65,65	0

6.5 Other polymers [i](#)

There are no such residues in this entry.