



Full wwPDB X-ray Structure Validation Report ⓘ

Jun 15, 2020 – 09:19 am BST

PDB ID : 4ZNV
Title : Crystal Structure of the ER-alpha Ligand-binding Domain (Y537S) in complex with a 2-Methoxy-substituted OBHS derivative
Authors : Nwachukwu, J.C.; Srinivasan, S.; Zheng, Y.; Wang, S.; Min, J.; Dong, C.; Liao, Z.; Cavett, V.; Nowak, J.; Houtman, R.; Carlson, K.E.; Josan, J.S.; Elemento, O.; Katzenellenbogen, J.A.; Zhou, H.B.; Nettles, K.W.
Deposited on : 2015-05-05
Resolution : 1.77 Å(reported)

This is a Full wwPDB X-ray Structure Validation Report for a publicly released PDB entry.

We welcome your comments at validation@mail.wwpdb.org

A user guide is available at

<https://www.wwpdb.org/validation/2017/XrayValidationReportHelp>

with specific help available everywhere you see the ⓘ symbol.

The following versions of software and data (see [references ⓘ](#)) were used in the production of this report:

MolProbity : 4.02b-467
Mogul : 1.8.5 (274361), CSD as541be (2020)
Xtriage (Phenix) : 1.13
EDS : 2.11
buster-report : 1.1.7 (2018)
Percentile statistics : 20191225.v01 (using entries in the PDB archive December 25th 2019)
Refmac : 5.8.0158
CCP4 : 7.0.044 (Gargrove)
Ideal geometry (proteins) : Engh & Huber (2001)
Ideal geometry (DNA, RNA) : Parkinson et al. (1996)
Validation Pipeline (wwPDB-VP) : 2.11

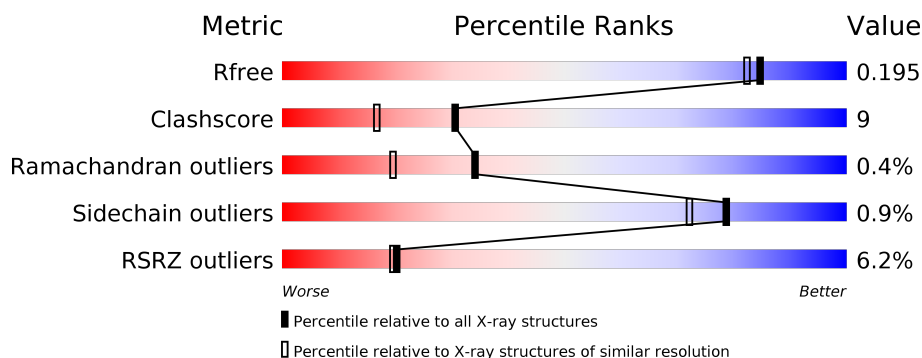
1 Overall quality at a glance

The following experimental techniques were used to determine the structure:

X-RAY DIFFRACTION

The reported resolution of this entry is 1.77 Å.

Percentile scores (ranging between 0-100) for global validation metrics of the entry are shown in the following graphic. The table shows the number of entries on which the scores are based.



Metric	Whole archive (#Entries)	Similar resolution (#Entries, resolution range(Å))
R_{free}	130704	9185 (1.80-1.76)
Clashscore	141614	10184 (1.80-1.76)
Ramachandran outliers	138981	10051 (1.80-1.76)
Sidechain outliers	138945	10050 (1.80-1.76)
RSRZ outliers	127900	9032 (1.80-1.76)

The table below summarises the geometric issues observed across the polymeric chains and their fit to the electron density. The red, orange, yellow and green segments on the lower bar indicate the fraction of residues that contain outliers for ≥ 3 , 2, 1 and 0 types of geometric quality criteria respectively. A grey segment represents the fraction of residues that are not modelled. The numeric value for each fraction is indicated below the corresponding segment, with a dot representing fractions $\leq 5\%$. The upper red bar (where present) indicates the fraction of residues that have poor fit to the electron density. The numeric value is given above the bar.

Mol	Chain	Length	Quality of chain
1	A	259	<div> <div>5%</div> <div> <div></div> <div>77%</div> <div>14%</div> <div>8%</div> </div> </div>
1	B	259	<div> <div>7%</div> <div> <div></div> <div>79%</div> <div>15%</div> <div>6%</div> </div> </div>
2	C	13	<div> <div></div> <div> <div></div> <div>54%</div> <div>15%</div> <div>31%</div> </div> </div>
2	D	13	<div> <div>8%</div> <div> <div></div> <div>54%</div> <div>23%</div> <div>23%</div> </div> </div>

2 Entry composition

There are 4 unique types of molecules in this entry. The entry contains 4421 atoms, of which 0 are hydrogens and 0 are deuteriums.

In the tables below, the ZeroOcc column contains the number of atoms modelled with zero occupancy, the AltConf column contains the number of residues with at least one atom in alternate conformation and the Trace column contains the number of residues modelled with at most 2 atoms.

- Molecule 1 is a protein called Estrogen receptor.

Mol	Chain	Residues	Atoms					ZeroOcc	AltConf	Trace
1	A	237	Total	C	N	O	S	0	2	0
			1891	1210	328	334	19			
1	B	243	Total	C	N	O	S	0	7	0
			1969	1261	342	347	19			

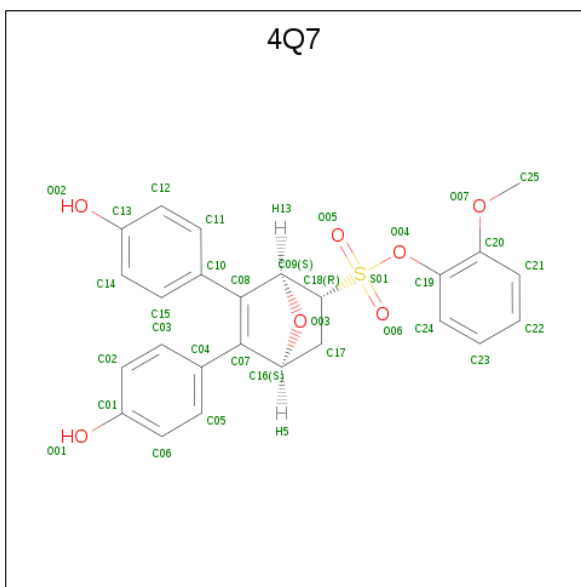
There are 2 discrepancies between the modelled and reference sequences:

Chain	Residue	Modelled	Actual	Comment	Reference
A	537	SER	TYR	engineered mutation	UNP P03372
B	537	SER	TYR	engineered mutation	UNP P03372

- Molecule 2 is a protein called Nuclear receptor-interacting peptide.

Mol	Chain	Residues	Atoms				ZeroOcc	AltConf	Trace
2	C	9	Total	C	N	O	0	0	0
			79	51	16	12			
2	D	10	Total	C	N	O	0	0	0
			89	57	19	13			

- Molecule 3 is 2-methoxyphenyl (1S,2R,4S)-5,6-bis(4-hydroxyphenyl)-7-oxabicyclo[2.2.1]hept-5-ene-2-sulfonate (three-letter code: 4Q7) (formula: C₂₅H₂₂O₇S).



Mol	Chain	Residues	Atoms				ZeroOcc	AltConf
3	A	1	Total 33	C 25	O 7	S 1	0	0
3	B	1	Total 33	C 25	O 7	S 1	0	0

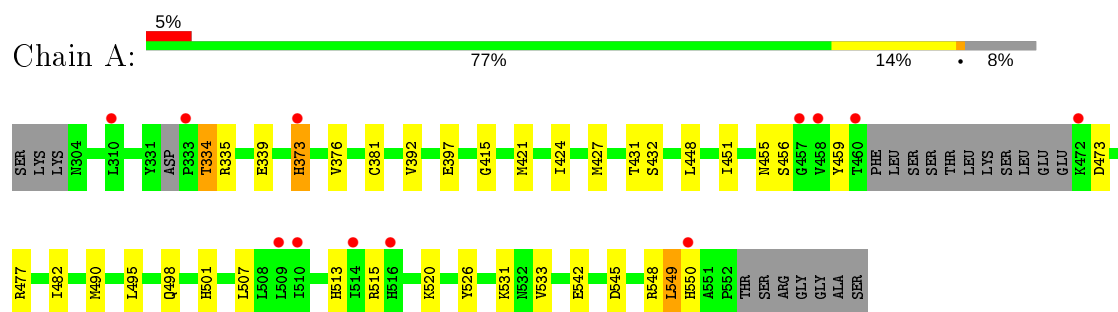
- Molecule 4 is water.

Mol	Chain	Residues	Atoms	ZeroOcc	AltConf
4	A	181	Total O 181 181	0	0
4	B	135	Total O 135 135	0	0
4	C	6	Total O 6 6	0	0
4	D	5	Total O 5 5	0	0

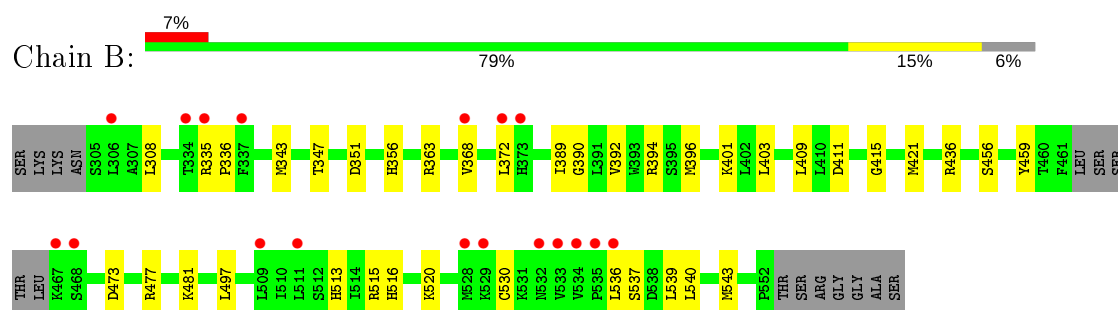
3 Residue-property plots [i](#)

These plots are drawn for all protein, RNA and DNA chains in the entry. The first graphic for a chain summarises the proportions of the various outlier classes displayed in the second graphic. The second graphic shows the sequence view annotated by issues in geometry and electron density. Residues are color-coded according to the number of geometric quality criteria for which they contain at least one outlier: green = 0, yellow = 1, orange = 2 and red = 3 or more. A red dot above a residue indicates a poor fit to the electron density ($\text{RSRZ} > 2$). Stretches of 2 or more consecutive residues without any outlier are shown as a green connector. Residues present in the sample, but not in the model, are shown in grey.

• Molecule 1: Estrogen receptor



• Molecule 1: Estrogen receptor



• Molecule 2: Nuclear receptor-interacting peptide



• Molecule 2: Nuclear receptor-interacting peptide



4 Data and refinement statistics

Property	Value	Source
Space group	P 1 21 1	Depositor
Cell constants a, b, c, α , β , γ	54.82Å 81.22Å 58.59Å 90.00° 111.21° 90.00°	Depositor
Resolution (Å)	32.59 – 1.77 32.59 – 1.77	Depositor EDS
% Data completeness (in resolution range)	96.3 (32.59-1.77) 96.1 (32.59-1.77)	Depositor EDS
R_{merge}	0.06	Depositor
R_{sym}	(Not available)	Depositor
$\langle I/\sigma(I) \rangle$ ¹	6.15 (at 1.77Å)	Xtriage
Refinement program	PHENIX	Depositor
R, R_{free}	0.178 , 0.197 0.176 , 0.195	Depositor DCC
R_{free} test set	1986 reflections (4.30%)	wwPDB-VP
Wilson B-factor (Å ²)	28.5	Xtriage
Anisotropy	0.104	Xtriage
Bulk solvent k_{sol} (e/Å ³), B_{sol} (Å ²)	0.34 , 48.3	EDS
L-test for twinning ²	$\langle L \rangle = 0.50$, $\langle L^2 \rangle = 0.33$	Xtriage
Estimated twinning fraction	No twinning to report.	Xtriage
F_o, F_c correlation	0.97	EDS
Total number of atoms	4421	wwPDB-VP
Average B, all atoms (Å ²)	39.0	wwPDB-VP

Xtriage's analysis on translational NCS is as follows: *The largest off-origin peak in the Patterson function is 6.50% of the height of the origin peak. No significant pseudotranslation is detected.*

¹Intensities estimated from amplitudes.

²Theoretical values of $\langle |L| \rangle$, $\langle L^2 \rangle$ for acentric reflections are 0.5, 0.333 respectively for untwinned datasets, and 0.375, 0.2 for perfectly twinned datasets.

5 Model quality [i](#)

5.1 Standard geometry [i](#)

Bond lengths and bond angles in the following residue types are not validated in this section: 4Q7

The Z score for a bond length (or angle) is the number of standard deviations the observed value is removed from the expected value. A bond length (or angle) with $|Z| > 5$ is considered an outlier worth inspection. RMSZ is the root-mean-square of all Z scores of the bond lengths (or angles).

Mol	Chain	Bond lengths		Bond angles	
		RMSZ	$\# Z > 5$	RMSZ	$\# Z > 5$
1	A	0.34	0/1933	0.48	0/2612
1	B	0.32	0/2024	0.46	0/2735
2	C	0.21	0/79	0.45	0/104
2	D	0.30	0/90	0.53	0/119
All	All	0.33	0/4126	0.47	0/5570

There are no bond length outliers.

There are no bond angle outliers.

There are no chirality outliers.

There are no planarity outliers.

5.2 Too-close contacts [i](#)

In the following table, the Non-H and H(model) columns list the number of non-hydrogen atoms and hydrogen atoms in the chain respectively. The H(added) column lists the number of hydrogen atoms added and optimized by MolProbity. The Clashes column lists the number of clashes within the asymmetric unit, whereas Symm-Clashes lists symmetry related clashes.

Mol	Chain	Non-H	H(model)	H(added)	Clashes	Symm-Clashes
1	A	1891	0	1934	43	0
1	B	1969	0	2032	41	0
2	C	79	0	88	2	0
2	D	89	0	95	4	0
3	A	33	0	0	0	0
3	B	33	0	0	1	0
4	A	181	0	0	12	1
4	B	135	0	0	9	1
4	C	6	0	0	1	0

Continued on next page...

Continued from previous page...

Mol	Chain	Non-H	H(model)	H(added)	Clashes	Symm-Clashes
4	D	5	0	0	0	0
All	All	4421	0	4149	76	1

The all-atom clashscore is defined as the number of clashes found per 1000 atoms (including hydrogen atoms). The all-atom clashscore for this structure is 9.

All (76) close contacts within the same asymmetric unit are listed below, sorted by their clash magnitude.

Atom-1	Atom-2	Interatomic distance (Å)	Clash overlap (Å)
1:A:459:TYR:HE1	1:B:513:HIS:CD2	1.81	0.97
1:B:390:GLY:O	1:B:394[B]:ARG:HD2	1.69	0.93
1:A:334:THR:HG22	1:A:335:ARG:H	1.37	0.88
1:A:373[A]:HIS:ND1	4:A:703:HOH:O	2.07	0.88
1:B:363[A]:ARG:NH1	4:B:701:HOH:O	2.08	0.87
1:B:473:ASP:OD2	1:B:477:ARG:NH1	2.12	0.82
1:A:459:TYR:CE1	1:B:513:HIS:CD2	2.69	0.81
2:D:688:LYS:HD2	2:D:691:HIS:HE1	1.49	0.77
2:D:688:LYS:HB2	2:D:691:HIS:ND1	1.99	0.77
1:A:397:GLU:OE1	4:A:701:HOH:O	2.04	0.75
2:C:695:GLN:OE1	4:C:701:HOH:O	2.06	0.73
2:D:688:LYS:HD2	2:D:691:HIS:CE1	2.26	0.71
1:A:415:GLY:HA2	1:A:421:MET:HE3	1.76	0.67
1:A:490:MET:HB3	1:A:495:LEU:HD12	1.79	0.65
1:A:392:VAL:HG13	1:A:432:SER:HA	1.79	0.64
1:B:530:CYS:SG	4:B:813:HOH:O	2.09	0.64
1:A:531:LYS:NZ	4:A:702:HOH:O	2.19	0.64
1:A:373[A]:HIS:CE1	4:A:703:HOH:O	2.50	0.60
1:A:520:LYS:NZ	4:A:707:HOH:O	2.30	0.60
1:B:363[A]:ARG:NH2	4:B:702:HOH:O	2.16	0.60
1:A:456:SER:HA	1:A:515:ARG:NH2	2.16	0.60
1:A:459:TYR:CD1	1:B:513:HIS:CE1	2.91	0.59
1:A:459:TYR:CE1	1:B:513:HIS:CG	2.92	0.57
1:A:473:ASP:OD2	1:A:477:ARG:HD2	2.05	0.57
1:A:459:TYR:HD1	1:B:513:HIS:CE1	2.25	0.55
1:B:343:MET:SD	3:B:601:4Q7:C25	2.95	0.55
1:A:459:TYR:HD1	1:B:513:HIS:ND1	2.04	0.55
1:A:392:VAL:HG13	1:A:432:SER:CA	2.37	0.55
1:A:548:ARG:NE	4:A:702:HOH:O	2.06	0.54
1:B:539:LEU:O	1:B:543:MET:HG2	2.08	0.53
1:B:335[A]:ARG:CZ	4:B:705:HOH:O	2.55	0.53
1:B:347[A]:THR:HG23	1:B:540:LEU:CD1	2.39	0.52

Continued on next page...

Continued from previous page...

Atom-1	Atom-2	Interatomic distance (Å)	Clash overlap (Å)
1:A:513:HIS:CE1	1:B:459:TYR:HD2	2.28	0.51
1:B:477:ARG:NH2	4:B:703:HOH:O	2.25	0.51
1:B:363[A]:ARG:NE	4:B:702:HOH:O	2.36	0.51
1:A:545:ASP:OD1	1:A:549:LEU:HD13	2.11	0.50
1:B:308:LEU:HA	1:B:481:LYS:CD	2.42	0.50
1:B:396:MET:O	1:B:436:ARG:HD3	2.12	0.50
1:B:415:GLY:HA2	1:B:421:MET:HE2	1.94	0.49
1:B:473:ASP:OD2	1:B:477:ARG:CZ	2.60	0.49
1:B:308:LEU:HA	1:B:481:LYS:HD2	1.94	0.49
1:A:334:THR:HG22	1:A:335:ARG:N	2.16	0.48
1:B:351:ASP:OD1	1:B:537:SER:OG	2.20	0.48
1:A:455:ASN:O	1:B:513:HIS:CE1	2.67	0.48
1:B:356:HIS:HD2	4:B:815:HOH:O	1.97	0.47
1:A:513:HIS:CE1	1:B:459:TYR:CD2	3.03	0.47
1:A:498:GLN:HA	1:A:501:HIS:CE1	2.49	0.47
1:A:459:TYR:CD1	1:B:513:HIS:ND1	2.82	0.47
1:A:392:VAL:HG11	1:A:431:THR:HG22	1.96	0.47
1:A:550:HIS:CD2	4:A:778:HOH:O	2.68	0.47
1:A:548:ARG:HD2	4:A:763:HOH:O	2.15	0.46
1:B:347[A]:THR:HG23	1:B:540:LEU:HD13	1.98	0.46
1:A:456:SER:HA	1:A:515:ARG:HH22	1.80	0.45
1:B:347[B]:THR:HG22	4:B:735:HOH:O	2.17	0.45
1:A:459:TYR:CE1	1:B:513:HIS:NE2	2.84	0.45
1:A:542:GLU:OE2	4:A:704:HOH:O	2.21	0.45
1:A:339:GLU:HG2	1:A:533:VAL:HG11	1.98	0.45
1:B:403:LEU:HA	1:B:409:LEU:HD12	2.00	0.44
1:B:347[A]:THR:HG21	1:B:536:LEU:CD2	2.47	0.44
1:A:451:ILE:HG13	1:A:482:ILE:HG21	2.00	0.43
1:A:550:HIS:HD2	4:A:778:HOH:O	2.00	0.43
1:B:516:HIS:O	1:B:520:LYS:HG2	2.19	0.43
1:B:347[A]:THR:HG21	1:B:536:LEU:HD22	2.00	0.43
1:B:389:ILE:HA	1:B:392:VAL:HG22	2.00	0.43
1:A:373[A]:HIS:CE1	4:A:732:HOH:O	2.72	0.42
1:A:459:TYR:CD1	1:B:513:HIS:CG	3.07	0.42
1:A:376:VAL:HG13	2:D:690:LEU:HD23	2.01	0.42
1:B:456:SER:HA	1:B:515:ARG:NH2	2.35	0.42
1:B:372[B]:LEU:CD2	2:C:691:HIS:CE1	3.03	0.42
1:A:549:LEU:HA	1:A:549:LEU:HD12	1.75	0.41
1:A:381:CYS:SG	4:A:870:HOH:O	2.09	0.41
1:B:401:LYS:HD3	1:B:411:ASP:HB3	2.03	0.41
1:A:424:ILE:HD13	1:A:427:MET:CE	2.51	0.41

Continued on next page...

Continued from previous page...

Atom-1	Atom-2	Interatomic distance (Å)	Clash overlap (Å)
1:A:415:GLY:HA2	1:A:421:MET:CE	2.45	0.40
1:B:368:VAL:HG22	4:B:740:HOH:O	2.20	0.40
1:A:448:LEU:HD11	1:A:507:LEU:HD22	2.04	0.40

All (1) symmetry-related close contacts are listed below. The label for Atom-2 includes the symmetry operator and encoded unit-cell translations to be applied.

Atom-1	Atom-2	Interatomic distance (Å)	Clash overlap (Å)
4:A:816:HOH:O	4:B:775:HOH:O[2_555]	1.98	0.22

5.3 Torsion angles [i](#)

5.3.1 Protein backbone [i](#)

In the following table, the Percentiles column shows the percent Ramachandran outliers of the chain as a percentile score with respect to all X-ray entries followed by that with respect to entries of similar resolution.

The Analysed column shows the number of residues for which the backbone conformation was analysed, and the total number of residues.

Mol	Chain	Analysed	Favoured	Allowed	Outliers	Percentiles	
1	A	233/259 (90%)	228 (98%)	4 (2%)	1 (0%)	34	19
1	B	246/259 (95%)	240 (98%)	5 (2%)	1 (0%)	34	19
2	C	7/13 (54%)	7 (100%)	0	0	100	100
2	D	8/13 (62%)	7 (88%)	1 (12%)	0	100	100
All	All	494/544 (91%)	482 (98%)	10 (2%)	2 (0%)	34	19

All (2) Ramachandran outliers are listed below:

Mol	Chain	Res	Type
1	A	334	THR
1	B	336	PRO

5.3.2 Protein sidechains [i](#)

In the following table, the Percentiles column shows the percent sidechain outliers of the chain as a percentile score with respect to all X-ray entries followed by that with respect to entries of similar

resolution.

The Analysed column shows the number of residues for which the sidechain conformation was analysed, and the total number of residues.

Mol	Chain	Analysed	Rotameric	Outliers	Percentiles	
1	A	212/231 (92%)	208 (98%)	4 (2%)	57	43
1	B	222/231 (96%)	221 (100%)	1 (0%)	88	86
2	C	9/13 (69%)	9 (100%)	0	100	100
2	D	10/13 (77%)	10 (100%)	0	100	100
All	All	453/488 (93%)	448 (99%)	5 (1%)	78	65

All (5) residues with a non-rotameric sidechain are listed below:

Mol	Chain	Res	Type
1	A	373[A]	HIS
1	A	373[B]	HIS
1	A	526	TYR
1	A	549	LEU
1	B	497	LEU

Some sidechains can be flipped to improve hydrogen bonding and reduce clashes. All (2) such sidechains are listed below:

Mol	Chain	Res	Type
2	C	691	HIS
2	D	691	HIS

5.3.3 RNA ⓘ

There are no RNA molecules in this entry.

5.4 Non-standard residues in protein, DNA, RNA chains ⓘ

There are no non-standard protein/DNA/RNA residues in this entry.

5.5 Carbohydrates ⓘ

There are no carbohydrates in this entry.

5.6 Ligand geometry

2 ligands are modelled in this entry.

In the following table, the Counts columns list the number of bonds (or angles) for which Mogul statistics could be retrieved, the number of bonds (or angles) that are observed in the model and the number of bonds (or angles) that are defined in the Chemical Component Dictionary. The Link column lists molecule types, if any, to which the group is linked. The Z score for a bond length (or angle) is the number of standard deviations the observed value is removed from the expected value. A bond length (or angle) with $|Z| > 2$ is considered an outlier worth inspection. RMSZ is the root-mean-square of all Z scores of the bond lengths (or angles).

Mol	Type	Chain	Res	Link	Bond lengths			Bond angles		
					Counts	RMSZ	# Z > 2	Counts	RMSZ	# Z > 2
3	4Q7	B	601	-	36,37,37	2.42	18 (50%)	46,55,55	2.21	13 (28%)
3	4Q7	A	601	-	36,37,37	2.16	10 (27%)	46,55,55	1.98	10 (21%)

In the following table, the Chirals column lists the number of chiral outliers, the number of chiral centers analysed, the number of these observed in the model and the number defined in the Chemical Component Dictionary. Similar counts are reported in the Torsion and Rings columns. '-' means no outliers of that kind were identified.

Mol	Type	Chain	Res	Link	Chirals	Torsions	Rings
3	4Q7	B	601	-	-	2/19/45/45	0/6/5/5
3	4Q7	A	601	-	-	1/19/45/45	0/6/5/5

All (28) bond length outliers are listed below:

Mol	Chain	Res	Type	Atoms	Z	Observed(Å)	Ideal(Å)
3	B	601	4Q7	C10-C08	-6.72	1.35	1.48
3	B	601	4Q7	C04-C07	-6.06	1.37	1.48
3	A	601	4Q7	C04-C07	-5.80	1.37	1.48
3	A	601	4Q7	C10-C08	-5.70	1.37	1.48
3	B	601	4Q7	C18-S01	3.43	1.86	1.79
3	B	601	4Q7	O04-S01	3.07	1.65	1.60
3	A	601	4Q7	C18-S01	2.89	1.85	1.79
3	A	601	4Q7	O04-S01	2.79	1.64	1.60
3	B	601	4Q7	C20-C19	-2.64	1.35	1.40
3	A	601	4Q7	O04-C19	-2.60	1.36	1.42
3	A	601	4Q7	C20-C19	-2.51	1.35	1.40
3	A	601	4Q7	C09-C08	2.48	1.53	1.50
3	B	601	4Q7	C09-C08	2.47	1.53	1.50
3	B	601	4Q7	C14-C13	-2.30	1.34	1.38
3	B	601	4Q7	C03-C02	-2.27	1.34	1.38
3	B	601	4Q7	C03-C04	-2.23	1.35	1.39

Continued on next page...

Continued from previous page...

Mol	Chain	Res	Type	Atoms	Z	Observed(Å)	Ideal(Å)
3	B	601	4Q7	C24-C19	-2.18	1.35	1.39
3	B	601	4Q7	C15-C14	-2.17	1.34	1.38
3	B	601	4Q7	C06-C01	-2.14	1.34	1.38
3	B	601	4Q7	C11-C10	-2.10	1.35	1.39
3	B	601	4Q7	O06-S01	2.10	1.46	1.43
3	B	601	4Q7	C15-C10	-2.08	1.35	1.39
3	A	601	4Q7	O05-S01	2.08	1.46	1.43
3	B	601	4Q7	O04-C19	-2.04	1.38	1.42
3	B	601	4Q7	C21-C20	-2.02	1.35	1.39
3	A	601	4Q7	C15-C14	-2.02	1.35	1.38
3	B	601	4Q7	C22-C21	-2.01	1.34	1.38
3	A	601	4Q7	C23-C24	-2.00	1.34	1.38

All (23) bond angle outliers are listed below:

Mol	Chain	Res	Type	Atoms	Z	Observed(°)	Ideal(°)
3	B	601	4Q7	O06-S01-C18	-9.23	97.32	109.33
3	A	601	4Q7	O06-S01-C18	-7.10	100.09	109.33
3	B	601	4Q7	O05-S01-C18	-5.84	101.73	109.33
3	A	601	4Q7	O05-S01-C18	-5.70	101.91	109.33
3	B	601	4Q7	O04-S01-O05	3.58	117.88	106.82
3	A	601	4Q7	C10-C08-C07	3.55	138.01	128.81
3	B	601	4Q7	O03-C16-C07	3.25	106.52	101.99
3	A	601	4Q7	C15-C10-C11	-2.77	114.64	118.59
3	A	601	4Q7	O04-S01-O06	2.77	115.37	106.82
3	B	601	4Q7	C10-C08-C07	2.73	135.86	128.81
3	B	601	4Q7	C05-C04-C03	-2.66	114.79	118.59
3	A	601	4Q7	O03-C16-C07	2.54	105.53	101.99
3	A	601	4Q7	C25-O07-C20	2.51	121.32	117.53
3	A	601	4Q7	O04-S01-O05	2.47	114.44	106.82
3	B	601	4Q7	C06-C05-C04	2.47	123.65	120.78
3	B	601	4Q7	C14-C15-C10	2.35	123.51	120.78
3	B	601	4Q7	C11-C12-C13	2.28	122.38	119.88
3	B	601	4Q7	C11-C10-C08	2.09	123.61	120.91
3	B	601	4Q7	C15-C10-C11	-2.08	115.62	118.59
3	B	601	4Q7	C04-C07-C08	2.07	134.15	128.81
3	A	601	4Q7	C14-C15-C10	2.03	123.14	120.78
3	A	601	4Q7	O03-C16-C17	-2.03	100.65	104.64
3	B	601	4Q7	O04-S01-O06	2.02	113.04	106.82

There are no chirality outliers.

All (3) torsion outliers are listed below:

Mol	Chain	Res	Type	Atoms
3	A	601	4Q7	C19-O04-S01-O06
3	B	601	4Q7	C19-O04-S01-O06
3	B	601	4Q7	C19-O04-S01-C18

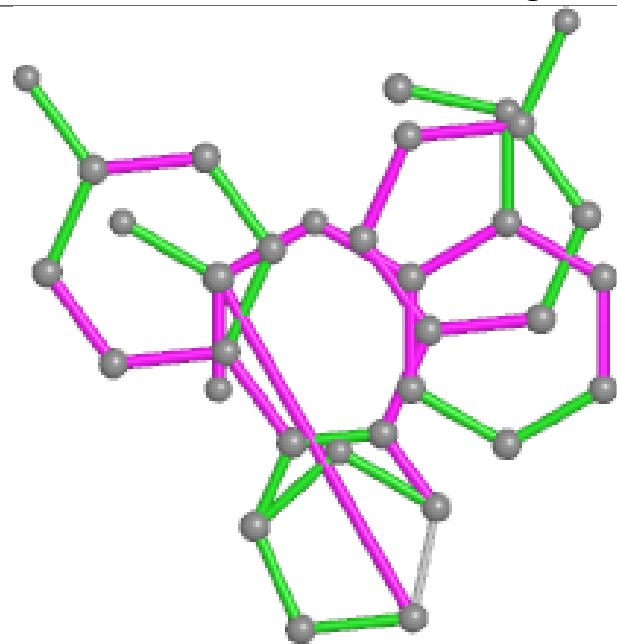
There are no ring outliers.

1 monomer is involved in 1 short contact:

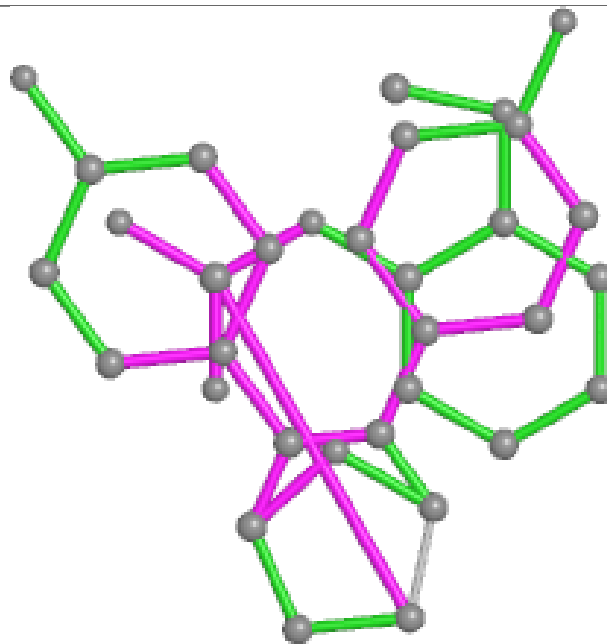
Mol	Chain	Res	Type	Clashes	Symm-Clashes
3	B	601	4Q7	1	0

The following is a two-dimensional graphical depiction of Mogul quality analysis of bond lengths, bond angles, torsion angles, and ring geometry for all instances of the Ligand of Interest. In addition, ligands with molecular weight > 250 and outliers as shown on the validation Tables will also be included. For torsion angles, if less than 5% of the Mogul distribution of torsion angles is within 10 degrees of the torsion angle in question, then that torsion angle is considered an outlier. Any bond that is central to one or more torsion angles identified as an outlier by Mogul will be highlighted in the graph. For rings, the root-mean-square deviation (RMSD) between the ring in question and similar rings identified by Mogul is calculated over all ring torsion angles. If the average RMSD is greater than 60 degrees and the minimal RMSD between the ring in question and any Mogul-identified rings is also greater than 60 degrees, then that ring is considered an outlier. The outliers are highlighted in purple. The color gray indicates Mogul did not find sufficient equivalents in the CSD to analyse the geometry.

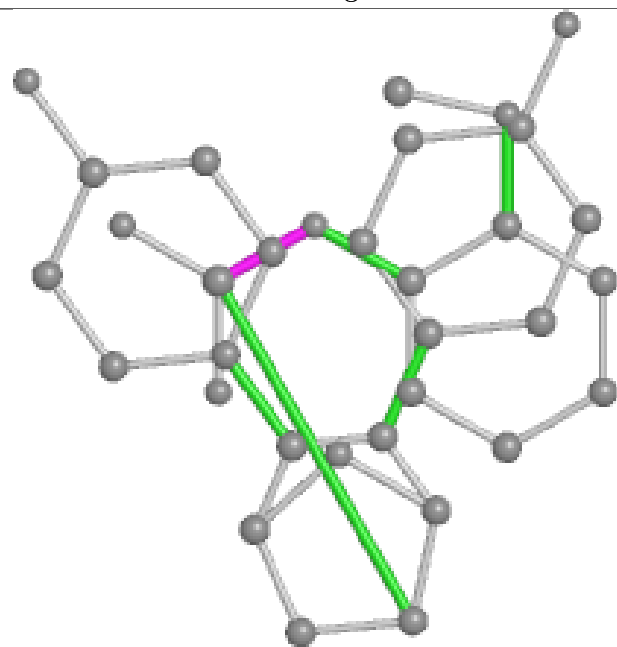
Ligand 4Q7 B 601



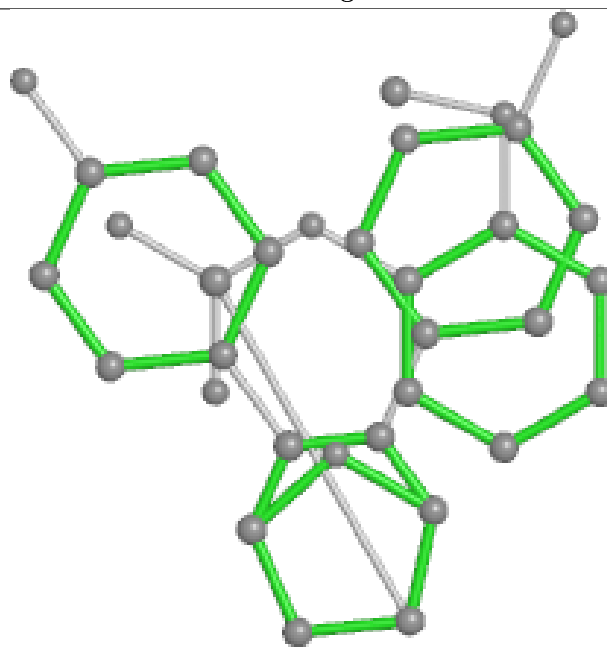
Bond lengths



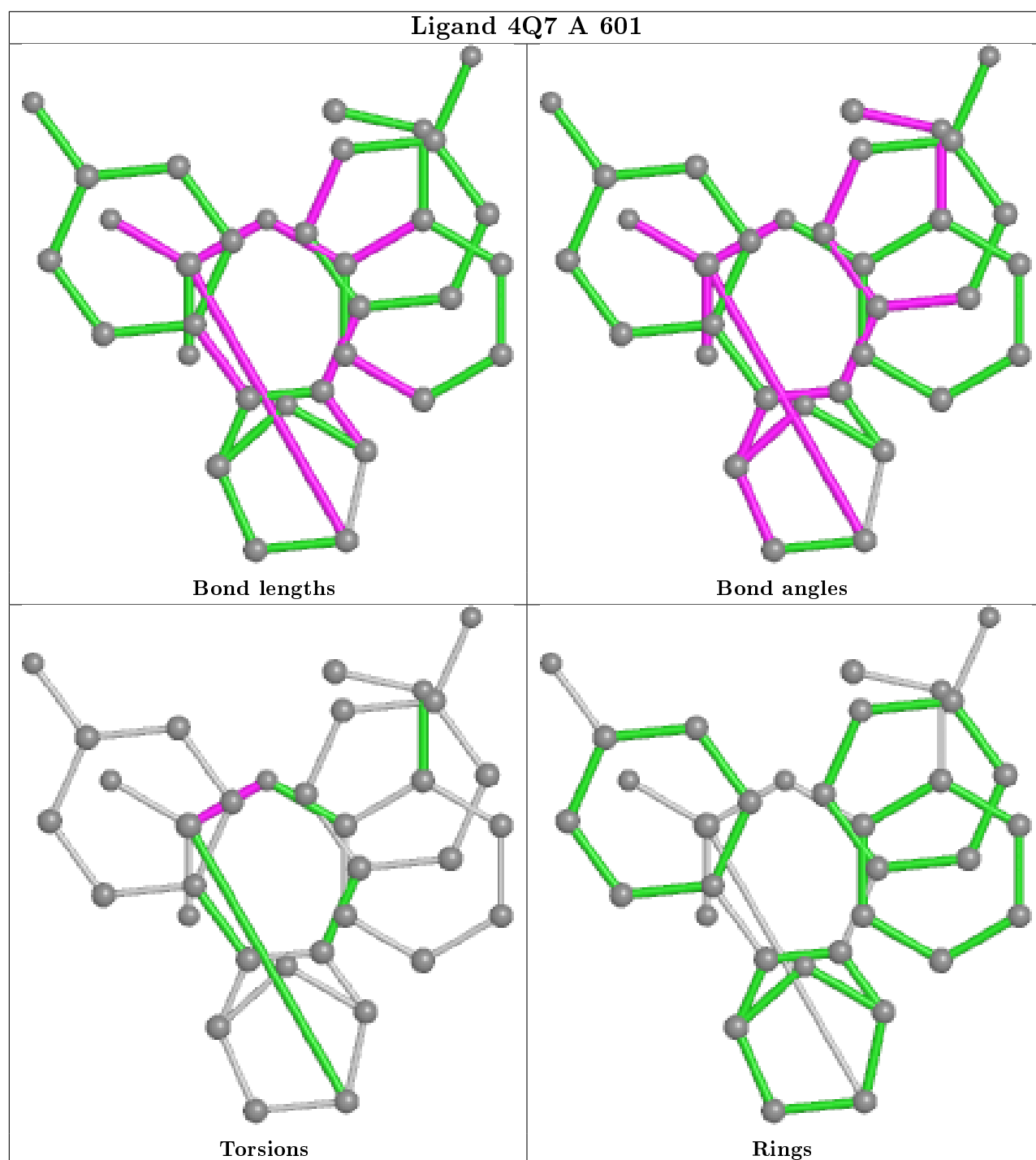
Bond angles



Torsions



Rings



5.7 Other polymers [i](#)

There are no such residues in this entry.

5.8 Polymer linkage issues [i](#)

There are no chain breaks in this entry.

6 Fit of model and data ⓘ

6.1 Protein, DNA and RNA chains ⓘ

In the following table, the column labelled ‘#RSRZ> 2’ contains the number (and percentage) of RSRZ outliers, followed by percent RSRZ outliers for the chain as percentile scores relative to all X-ray entries and entries of similar resolution. The OWAB column contains the minimum, median, 95th percentile and maximum values of the occupancy-weighted average B-factor per residue. The column labelled ‘Q< 0.9’ lists the number of (and percentage) of residues with an average occupancy less than 0.9.

Mol	Chain	Analysed	<RSRZ>	#RSRZ>2	OWAB(Å ²)	Q<0.9
1	A	237/259 (91%)	0.08	12 (5%) 28 26	20, 34, 61, 108	0
1	B	243/259 (93%)	0.21	18 (7%) 14 14	21, 36, 71, 84	0
2	C	9/13 (69%)	0.49	0 100 100	35, 52, 62, 71	0
2	D	10/13 (76%)	0.30	1 (10%) 7 6	33, 37, 72, 82	0
All	All	499/544 (91%)	0.16	31 (6%) 20 19	20, 35, 70, 108	0

All (31) RSRZ outliers are listed below:

Mol	Chain	Res	Type	RSRZ
1	B	534	VAL	6.2
1	B	306	LEU	6.1
1	B	533	VAL	4.8
1	A	333	PRO	4.7
1	A	458	VAL	3.9
1	B	528	MET	3.9
1	B	468	SER	3.7
1	B	536	LEU	3.6
1	B	372[A]	LEU	3.3
1	A	514	ILE	3.3
1	A	472	LYS	3.3
2	D	696	ASP	3.2
1	B	337	PHE	2.9
1	B	511	LEU	2.8
1	A	457	GLY	2.8
1	B	335[A]	ARG	2.6
1	A	509	LEU	2.6
1	A	460	THR	2.5
1	B	368	VAL	2.5
1	A	310	LEU	2.5
1	B	373	HIS	2.5

Continued on next page...

Continued from previous page...

Mol	Chain	Res	Type	RSRZ
1	B	509	LEU	2.5
1	A	373[A]	HIS	2.4
1	B	529	LYS	2.3
1	B	532	ASN	2.1
1	B	535	PRO	2.1
1	A	510	ILE	2.1
1	A	516	HIS	2.1
1	B	334	THR	2.0
1	B	467	LYS	2.0
1	A	550	HIS	2.0

6.2 Non-standard residues in protein, DNA, RNA chains ⓘ

There are no non-standard protein/DNA/RNA residues in this entry.

6.3 Carbohydrates ⓘ

There are no carbohydrates in this entry.

6.4 Ligands ⓘ

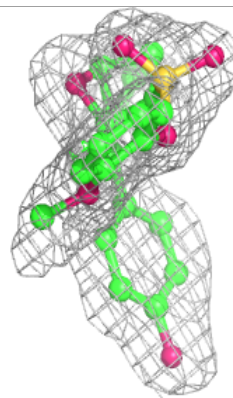
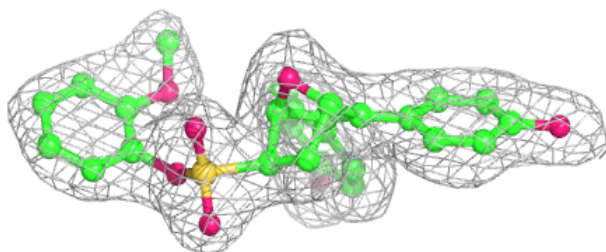
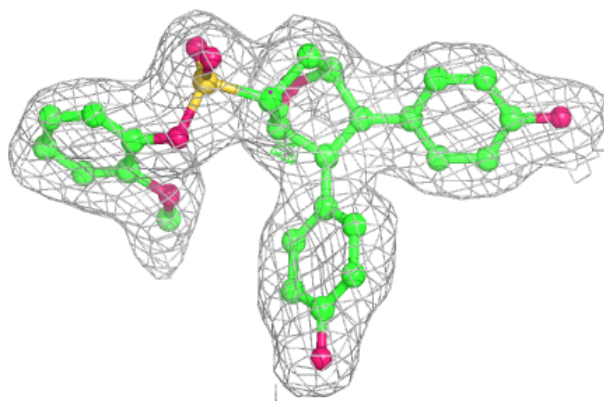
In the following table, the Atoms column lists the number of modelled atoms in the group and the number defined in the chemical component dictionary. The B-factors column lists the minimum, median, 95th percentile and maximum values of B factors of atoms in the group. The column labelled 'Q< 0.9' lists the number of atoms with occupancy less than 0.9.

Mol	Type	Chain	Res	Atoms	RSCC	RSR	B-factors(Å ²)	Q<0.9
3	4Q7	B	601	33/33	0.95	0.09	23,28,41,42	0
3	4Q7	A	601	33/33	0.96	0.11	19,22,29,38	0

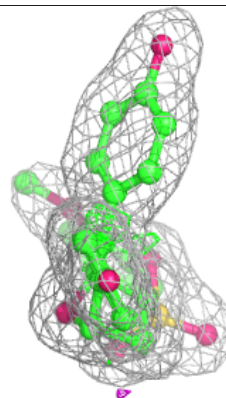
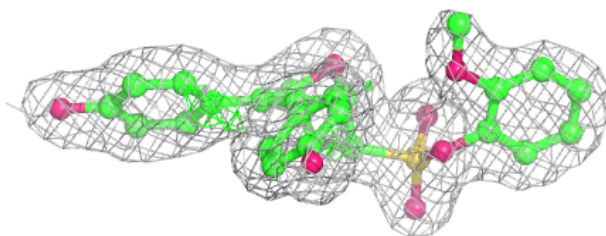
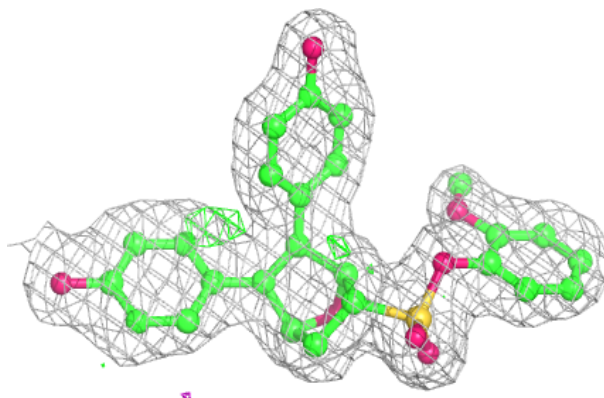
The following is a graphical depiction of the model fit to experimental electron density of all instances of the Ligand of Interest. In addition, ligands with molecular weight > 250 and outliers as shown on the geometry validation Tables will also be included. Each fit is shown from different orientation to approximate a three-dimensional view.

Electron density around 4Q7 B 601:

$2mF_o - DF_c$ (at 0.7 rmsd) in gray
 $mF_o - DF_c$ (at 3 rmsd) in purple (negative)
and green (positive)

**Electron density around 4Q7 A 601:**

$2mF_o - DF_c$ (at 0.7 rmsd) in gray
 $mF_o - DF_c$ (at 3 rmsd) in purple (negative)
and green (positive)



6.5 Other polymers

There are no such residues in this entry.