



Full wwPDB X-ray Structure Validation Report ⓘ

May 15, 2020 – 03:30 am BST

PDB ID : 1ZOT
Title : crystal structure analysis of the CyaA/C-Cam with PMEAPP
Authors : Guo, Q.; Tang, W.J.
Deposited on : 2005-05-13
Resolution : 2.20 Å(reported)

This is a Full wwPDB X-ray Structure Validation Report for a publicly released PDB entry.

We welcome your comments at validation@mail.wwpdb.org

A user guide is available at

<https://www.wwpdb.org/validation/2017/XrayValidationReportHelp>

with specific help available everywhere you see the ⓘ symbol.

The following versions of software and data (see [references ⓘ](#)) were used in the production of this report:

MolProbity : 4.02b-467
Mogul : 1.8.5 (274361), CSD as541be (2020)
Xtriage (Phenix) : 1.13
EDS : 2.11
buster-report : 1.1.7 (2018)
Percentile statistics : 20191225.v01 (using entries in the PDB archive December 25th 2019)
Refmac : 5.8.0158
CCP4 : 7.0.044 (Gargrove)
Ideal geometry (proteins) : Engh & Huber (2001)
Ideal geometry (DNA, RNA) : Parkinson et al. (1996)
Validation Pipeline (wwPDB-VP) : 2.11

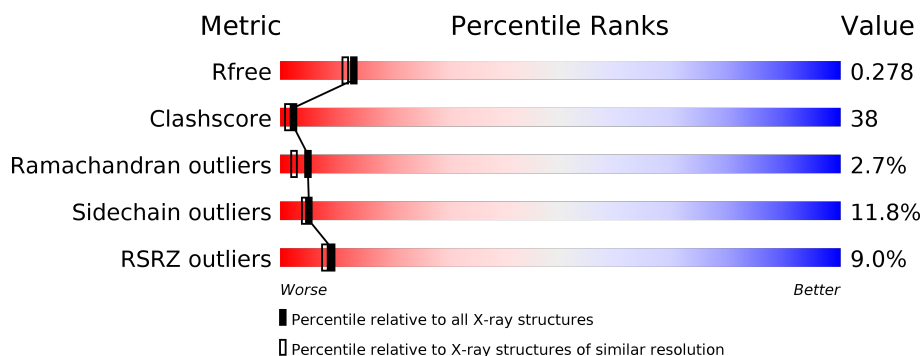
1 Overall quality at a glance

The following experimental techniques were used to determine the structure:

X-RAY DIFFRACTION

The reported resolution of this entry is 2.20 Å.

Percentile scores (ranging between 0-100) for global validation metrics of the entry are shown in the following graphic. The table shows the number of entries on which the scores are based.



Metric	Whole archive (#Entries)	Similar resolution (#Entries, resolution range(Å))
R_{free}	130704	4898 (2.20-2.20)
Clashscore	141614	5594 (2.20-2.20)
Ramachandran outliers	138981	5503 (2.20-2.20)
Sidechain outliers	138945	5504 (2.20-2.20)
RSRZ outliers	127900	4800 (2.20-2.20)

The table below summarises the geometric issues observed across the polymeric chains and their fit to the electron density. The red, orange, yellow and green segments on the lower bar indicate the fraction of residues that contain outliers for ≥ 3 , 2, 1 and 0 types of geometric quality criteria respectively. A grey segment represents the fraction of residues that are not modelled. The numeric value for each fraction is indicated below the corresponding segment, with a dot representing fractions $\leq 5\%$. The upper red bar (where present) indicates the fraction of residues that have poor fit to the electron density. The numeric value is given above the bar.

Mol	Chain	Length	Quality of chain
1	A	358	<div> <div>9%</div> <div> <div></div> <div>51%</div> <div>37%</div> <div>8%</div> <div>• •</div> </div> </div>
2	B	69	<div> <div>7%</div> <div> <div></div> <div>58%</div> <div>33%</div> <div>• •</div> </div> </div>

2 Entry composition [i](#)

There are 6 unique types of molecules in this entry. The entry contains 3427 atoms, of which 0 are hydrogens and 0 are deuteriums.

In the tables below, the ZeroOcc column contains the number of atoms modelled with zero occupancy, the AltConf column contains the number of residues with at least one atom in alternate conformation and the Trace column contains the number of residues modelled with at most 2 atoms.

- Molecule 1 is a protein called CyaA with C-terminal Calmodulin.

Mol	Chain	Residues	Atoms					ZeroOcc	AltConf	Trace
1	A	351	Total	C	N	O	S	0	0	0
			2684	1664	495	519	6			

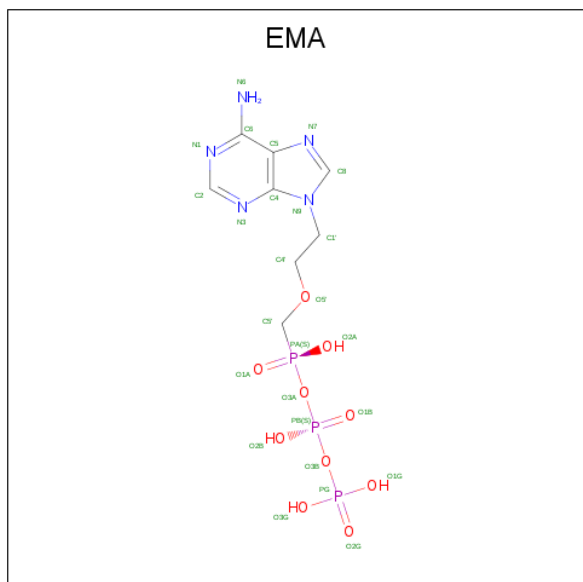
- Molecule 2 is a protein called Calmodulin.

Mol	Chain	Residues	Atoms					ZeroOcc	AltConf	Trace
2	B	69	Total	C	N	O	S	0	0	0
			551	335	90	122	4			

- Molecule 3 is MAGNESIUM ION (three-letter code: MG) (formula: Mg).

Mol	Chain	Residues	Atoms		ZeroOcc	AltConf
3	A	3	Total	Mg	0	0
			3	3		

- Molecule 4 is (ADENIN-9-YL-ETHOXYMETHYL)-HYDROXYPHOSPHINYLDIPHOSPHATE (three-letter code: EMA) (formula: C₈H₁₄N₅O₁₀P₃).



Mol	Chain	Residues	Atoms					ZeroOcc	AltConf
4	A	1	Total	C	N	O	P	0	0
			26	8	5	10	3		

- Molecule 5 is CALCIUM ION (three-letter code: CA) (formula: Ca).

Mol	Chain	Residues	Atoms		ZeroOcc	AltConf
5	B	2	Total	Ca	0	0
			2	2		

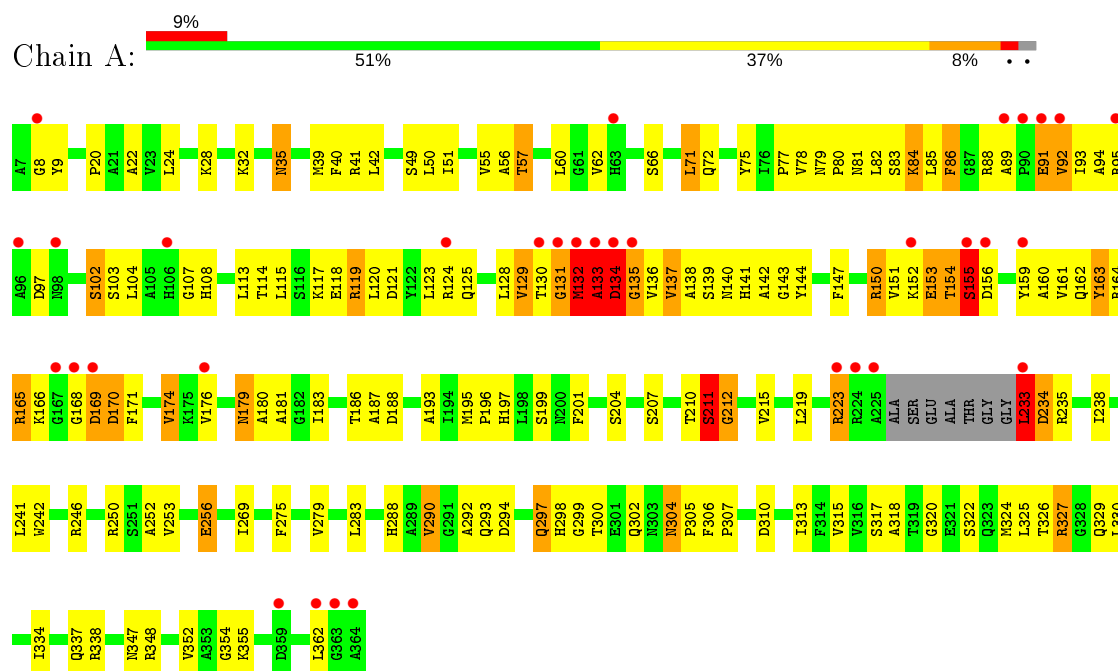
- Molecule 6 is water.

Mol	Chain	Residues	Atoms		ZeroOcc	AltConf
6	A	128	Total	O	0	0
			128	128		
6	B	33	Total	O	0	0
			33	33		

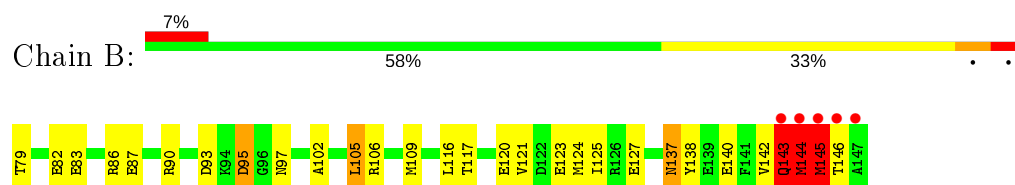
3 Residue-property plots [i](#)

These plots are drawn for all protein, RNA and DNA chains in the entry. The first graphic for a chain summarises the proportions of the various outlier classes displayed in the second graphic. The second graphic shows the sequence view annotated by issues in geometry and electron density. Residues are color-coded according to the number of geometric quality criteria for which they contain at least one outlier: green = 0, yellow = 1, orange = 2 and red = 3 or more. A red dot above a residue indicates a poor fit to the electron density ($RSRZ > 2$). Stretches of 2 or more consecutive residues without any outlier are shown as a green connector. Residues present in the sample, but not in the model, are shown in grey.

• Molecule 1: CyaA with C-terminal Calmodulin



• Molecule 2: Calmodulin



4 Data and refinement statistics

Property	Value	Source
Space group	P 41 21 2	Depositor
Cell constants a, b, c, α , β , γ	79.67Å 79.67Å 139.34Å 90.00° 90.00° 90.00°	Depositor
Resolution (Å)	34.52 – 2.20 34.52 – 2.09	Depositor EDS
% Data completeness (in resolution range)	92.2 (34.52-2.20) 99.8 (34.52-2.09)	Depositor EDS
R_{merge}	(Not available)	Depositor
R_{sym}	(Not available)	Depositor
$\langle I/\sigma(I) \rangle$ ¹	4.36 (at 2.10Å)	Xtriage
Refinement program	CNS 1.1	Depositor
R, R_{free}	0.252 , 0.291 0.280 , 0.278	Depositor DCC
R_{free} test set	1361 reflections (5.00%)	wwPDB-VP
Wilson B-factor (Å ²)	24.2	Xtriage
Anisotropy	0.339	Xtriage
Bulk solvent k_{sol} (e/Å ³), B_{sol} (Å ²)	0.33 , 38.7	EDS
L-test for twinning ²	$\langle L \rangle = 0.49$, $\langle L^2 \rangle = 0.32$	Xtriage
Estimated twinning fraction	No twinning to report.	Xtriage
F_o, F_c correlation	0.89	EDS
Total number of atoms	3427	wwPDB-VP
Average B, all atoms (Å ²)	27.0	wwPDB-VP

Xtriage's analysis on translational NCS is as follows: *The largest off-origin peak in the Patterson function is 6.75% of the height of the origin peak. No significant pseudotranslation is detected.*

¹Intensities estimated from amplitudes.

²Theoretical values of $\langle |L| \rangle$, $\langle L^2 \rangle$ for acentric reflections are 0.5, 0.333 respectively for untwinned datasets, and 0.375, 0.2 for perfectly twinned datasets.

5 Model quality

5.1 Standard geometry

Bond lengths and bond angles in the following residue types are not validated in this section: CA, EMA, MG

The Z score for a bond length (or angle) is the number of standard deviations the observed value is removed from the expected value. A bond length (or angle) with $|Z| > 5$ is considered an outlier worth inspection. RMSZ is the root-mean-square of all Z scores of the bond lengths (or angles).

Mol	Chain	Bond lengths		Bond angles	
		RMSZ	$\# Z > 5$	RMSZ	$\# Z > 5$
1	A	0.93	3/2728 (0.1%)	1.10	20/3682 (0.5%)
2	B	0.78	0/556	1.02	3/746 (0.4%)
All	All	0.90	3/3284 (0.1%)	1.09	23/4428 (0.5%)

Chiral center outliers are detected by calculating the chiral volume of a chiral center and verifying if the center is modelled as a planar moiety or with the opposite hand. A planarity outlier is detected by checking planarity of atoms in a peptide group, atoms in a mainchain group or atoms of a sidechain that are expected to be planar.

Mol	Chain	#Chirality outliers	#Planarity outliers
1	A	0	3
2	B	1	0
All	All	1	3

All (3) bond length outliers are listed below:

Mol	Chain	Res	Type	Atoms	Z	Observed(Å)	Ideal(Å)
1	A	134	ASP	C-N	-18.25	1.00	1.33
1	A	212	GLY	N-CA	18.16	1.73	1.46
1	A	233	LEU	C-N	-12.77	1.04	1.34

All (23) bond angle outliers are listed below:

Mol	Chain	Res	Type	Atoms	Z	Observed(°)	Ideal(°)
1	A	134	ASP	O-C-N	-20.97	87.55	123.20
2	B	144	MET	N-CA-CB	-11.89	89.20	110.60
1	A	9	TYR	N-CA-CB	-11.49	89.92	110.60
1	A	233	LEU	N-CA-C	-10.99	81.33	111.00
1	A	133	ALA	O-C-N	-10.50	105.89	122.70
1	A	211	SER	C-N-CA	-10.31	100.65	122.30

Continued on next page...

Continued from previous page...

Mol	Chain	Res	Type	Atoms	Z	Observed(°)	Ideal(°)
1	A	234	ASP	N-CA-CB	-10.15	92.32	110.60
1	A	169	ASP	N-CA-C	9.56	136.82	111.00
1	A	134	ASP	N-CA-C	-9.16	86.28	111.00
1	A	89	ALA	N-CA-CB	-7.62	99.44	110.10
1	A	168	GLY	C-N-CA	7.55	140.57	121.70
1	A	134	ASP	C-N-CA	7.49	138.03	122.30
1	A	169	ASP	CA-C-N	7.13	132.89	117.20
1	A	134	ASP	CA-C-N	6.44	129.07	116.20
2	B	143	GLN	CB-CA-C	6.43	123.26	110.40
1	A	71	LEU	CA-CB-CG	6.26	129.70	115.30
1	A	169	ASP	C-N-CA	-6.23	106.13	121.70
1	A	89	ALA	N-CA-C	6.00	127.20	111.00
1	A	169	ASP	O-C-N	-5.82	113.39	122.70
2	B	143	GLN	N-CA-C	5.79	126.64	111.00
1	A	132	MET	C-N-CA	-5.68	107.50	121.70
1	A	211	SER	N-CA-CB	-5.09	102.86	110.50
1	A	169	ASP	N-CA-CB	-5.02	101.57	110.60

All (1) chirality outliers are listed below:

Mol	Chain	Res	Type	Atom
2	B	143	GLN	CA

All (3) planarity outliers are listed below:

Mol	Chain	Res	Type	Group
1	A	133	ALA	Mainchain
1	A	134	ASP	Mainchain
1	A	211	SER	Peptide

5.2 Too-close contacts

In the following table, the Non-H and H(model) columns list the number of non-hydrogen atoms and hydrogen atoms in the chain respectively. The H(added) column lists the number of hydrogen atoms added and optimized by MolProbity. The Clashes column lists the number of clashes within the asymmetric unit, whereas Symm-Clashes lists symmetry related clashes.

Mol	Chain	Non-H	H(model)	H(added)	Clashes	Symm-Clashes
1	A	2684	0	2622	207	0
2	B	551	0	503	51	0
3	A	3	0	0	0	0

Continued on next page...

Continued from previous page...

Mol	Chain	Non-H	H(model)	H(added)	Clashes	Symm-Clashes
4	A	26	0	8	1	0
5	B	2	0	0	0	0
6	A	128	0	0	13	0
6	B	33	0	0	4	0
All	All	3427	0	3133	243	0

The all-atom clashscore is defined as the number of clashes found per 1000 atoms (including hydrogen atoms). The all-atom clashscore for this structure is 38.

All (243) close contacts within the same asymmetric unit are listed below, sorted by their clash magnitude.

Atom-1	Atom-2	Interatomic distance (Å)	Clash overlap (Å)
1:A:212:GLY:N	1:A:212:GLY:CA	1.73	1.51
2:B:144:MET:HE2	2:B:145:MET:HG2	1.26	1.16
1:A:362:LEU:HD12	2:B:90:ARG:HH22	1.05	1.16
1:A:362:LEU:HD12	2:B:90:ARG:NH2	1.65	1.12
1:A:152:LYS:HD2	1:A:162:GLN:HE22	1.14	1.07
1:A:57:THR:HG23	1:A:188:ASP:HB3	1.32	1.07
1:A:124:ARG:NH2	1:A:131:GLY:HA2	1.71	1.05
1:A:124:ARG:HH21	1:A:131:GLY:HA2	0.86	1.02
1:A:223:ARG:NE	1:A:223:ARG:HA	1.76	1.01
1:A:327:ARG:HH11	1:A:327:ARG:HG3	1.29	0.98
1:A:151:VAL:HG21	1:A:159:TYR:HB3	1.46	0.97
1:A:211:SER:C	1:A:212:GLY:CA	2.33	0.96
1:A:8:GLY:O	6:A:983:HOH:O	1.83	0.95
1:A:147:PHE:HB3	6:A:965:HOH:O	1.73	0.89
1:A:151:VAL:CG2	1:A:159:TYR:HB3	2.03	0.87
1:A:103:SER:O	1:A:108:HIS:HB2	1.74	0.87
1:A:233:LEU:HD12	1:A:233:LEU:O	1.76	0.86
1:A:304:ASN:ND2	1:A:306:PHE:H	1.72	0.86
2:B:86:ARG:HH11	2:B:86:ARG:HG2	1.39	0.86
1:A:39:MET:HG2	1:A:315:VAL:HG22	1.59	0.85
1:A:57:THR:HG23	1:A:188:ASP:CB	2.07	0.84
1:A:300:THR:HG22	1:A:302:GLN:H	1.42	0.84
1:A:246:ARG:HG3	2:B:145:MET:SD	2.20	0.81
1:A:223:ARG:HA	1:A:223:ARG:HE	1.43	0.81
1:A:113:LEU:HB3	1:A:174:VAL:HG23	1.60	0.81
2:B:137:ASN:ND2	2:B:140:GLU:H	1.78	0.81
1:A:327:ARG:NH1	1:A:327:ARG:HG3	1.90	0.81
1:A:152:LYS:HD2	1:A:162:GLN:NE2	1.95	0.81
1:A:124:ARG:HH21	1:A:131:GLY:CA	1.83	0.81

Continued on next page...

Continued from previous page...

Atom-1	Atom-2	Interatomic distance (Å)	Clash overlap (Å)
2:B:144:MET:CE	2:B:145:MET:HG2	2.08	0.81
1:A:24:LEU:HD11	1:A:28:LYS:HE3	1.63	0.80
1:A:246:ARG:HB2	2:B:145:MET:HE2	1.62	0.80
2:B:144:MET:C	2:B:146:THR:H	1.82	0.79
1:A:85:LEU:HD22	1:A:88:ARG:HG3	1.64	0.79
1:A:152:LYS:CD	1:A:162:GLN:HE22	1.95	0.78
1:A:304:ASN:HD22	1:A:306:PHE:H	1.32	0.78
1:A:169:ASP:C	1:A:169:ASP:OD2	2.21	0.77
2:B:143:GLN:HG3	6:B:247:HOH:O	1.84	0.77
1:A:86:PHE:CZ	1:A:143:GLY:HA2	2.19	0.76
1:A:124:ARG:HG2	1:A:129:VAL:CG1	2.18	0.74
4:A:900:EMA:H1'1	6:A:1031:HOH:O	1.86	0.74
2:B:137:ASN:HD21	2:B:140:GLU:H	1.36	0.73
1:A:132:MET:HG3	1:A:135:GLY:HA2	1.69	0.72
1:A:154:THR:C	1:A:156:ASP:H	1.91	0.72
1:A:197:HIS:HD2	1:A:199:SER:OG	1.72	0.72
1:A:169:ASP:OD2	1:A:170:ASP:N	2.23	0.71
2:B:109:MET:HG3	2:B:124:MET:HE1	1.72	0.71
1:A:298:HIS:HD2	1:A:299:GLY:O	1.73	0.71
2:B:137:ASN:HD22	2:B:137:ASN:C	1.93	0.70
1:A:66:SER:O	1:A:84:LYS:HG2	1.91	0.70
1:A:24:LEU:HD13	1:A:24:LEU:O	1.93	0.69
1:A:327:ARG:CG	1:A:327:ARG:HH11	2.04	0.69
2:B:105:LEU:HD12	2:B:125:ILE:HD12	1.75	0.69
1:A:326:THR:OG1	1:A:329:GLN:HG3	1.93	0.68
1:A:151:VAL:HG23	1:A:160:ALA:O	1.93	0.68
2:B:105:LEU:HD12	2:B:125:ILE:CD1	2.23	0.68
1:A:117:LYS:HD3	1:A:159:TYR:HE1	1.59	0.68
1:A:41:ARG:NE	1:A:310:ASP:OD2	2.27	0.68
2:B:93:ASP:OD1	2:B:97:ASN:O	2.12	0.68
1:A:24:LEU:CD1	1:A:28:LYS:HE3	2.23	0.67
2:B:117:THR:O	2:B:121:VAL:HG23	1.94	0.66
1:A:362:LEU:CD1	2:B:90:ARG:HH22	1.95	0.65
1:A:22:ALA:HB1	1:A:290:VAL:HG21	1.78	0.65
1:A:304:ASN:ND2	1:A:306:PHE:N	2.43	0.65
1:A:166:LYS:HG2	1:A:166:LYS:O	1.96	0.65
1:A:132:MET:HB2	1:A:136:VAL:C	2.17	0.64
1:A:246:ARG:CG	2:B:145:MET:SD	2.85	0.64
1:A:125:GLN:O	1:A:125:GLN:HG2	1.96	0.64
1:A:183:ILE:HD13	1:A:293:GLN:HE22	1.62	0.64
1:A:304:ASN:HD22	1:A:306:PHE:N	1.95	0.64

Continued on next page...

Continued from previous page...

Atom-1	Atom-2	Interatomic distance (Å)	Clash overlap (Å)
1:A:75:TYR:HB3	1:A:176:VAL:HG21	1.78	0.63
1:A:300:THR:HG21	6:A:934:HOH:O	1.98	0.63
2:B:86:ARG:HH11	2:B:86:ARG:CG	2.09	0.63
1:A:42:LEU:HD21	1:A:324:MET:CE	2.28	0.62
1:A:297:GLN:HA	1:A:297:GLN:HE21	1.63	0.62
1:A:22:ALA:HB1	1:A:290:VAL:CG2	2.30	0.62
1:A:313:ILE:HD12	1:A:330:LEU:HD22	1.80	0.62
1:A:211:SER:O	1:A:212:GLY:HA3	2.00	0.61
1:A:246:ARG:HA	2:B:145:MET:HE1	1.83	0.61
1:A:233:LEU:HD12	1:A:233:LEU:C	2.20	0.61
2:B:144:MET:C	2:B:146:THR:N	2.52	0.61
1:A:300:THR:HG22	1:A:302:GLN:N	2.15	0.61
2:B:117:THR:OG1	2:B:120:GLU:HG3	2.01	0.61
2:B:138:TYR:O	2:B:142:VAL:HG23	1.99	0.61
1:A:91:GLU:HG2	1:A:91:GLU:O	2.00	0.60
1:A:304:ASN:HD22	1:A:304:ASN:C	2.05	0.60
1:A:120:LEU:O	1:A:124:ARG:HG3	2.02	0.60
1:A:50:LEU:HB3	1:A:55:VAL:HG21	1.84	0.59
1:A:71:LEU:HD11	1:A:137:VAL:HG11	1.84	0.59
1:A:86:PHE:CE2	1:A:143:GLY:HA2	2.36	0.59
1:A:211:SER:O	1:A:212:GLY:CA	2.50	0.59
1:A:133:ALA:HB3	1:A:136:VAL:CG2	2.33	0.58
1:A:164:ARG:HD3	1:A:171:PHE:CZ	2.37	0.58
1:A:42:LEU:HD21	1:A:324:MET:HE1	1.86	0.58
1:A:153:GLU:CG	1:A:154:THR:N	2.66	0.58
1:A:165:ARG:HG2	1:A:165:ARG:HH11	1.68	0.58
1:A:104:LEU:HA	1:A:108:HIS:O	2.03	0.57
1:A:113:LEU:HG	1:A:161:VAL:CG2	2.34	0.57
1:A:133:ALA:HB3	1:A:136:VAL:HG23	1.85	0.57
1:A:57:THR:HG22	1:A:297:GLN:CG	2.35	0.57
1:A:201:PHE:CZ	1:A:252:ALA:HA	2.40	0.57
1:A:302:GLN:O	1:A:347:ASN:HA	2.04	0.57
1:A:300:THR:CG2	1:A:302:GLN:H	2.14	0.57
1:A:233:LEU:HD11	1:A:235:ARG:HD2	1.88	0.56
1:A:57:THR:CG2	1:A:188:ASP:HB3	2.22	0.56
1:A:324:MET:O	1:A:325:LEU:HD23	2.05	0.56
1:A:85:LEU:O	1:A:88:ARG:HG2	2.06	0.56
1:A:153:GLU:HG2	1:A:154:THR:N	2.21	0.56
1:A:304:ASN:ND2	6:A:1031:HOH:O	2.39	0.56
1:A:325:LEU:HA	1:A:329:GLN:OE1	2.04	0.56
1:A:238:ILE:CD1	2:B:123:GLU:HB3	2.36	0.56

Continued on next page...

Continued from previous page...

Atom-1	Atom-2	Interatomic distance (Å)	Clash overlap (Å)
1:A:113:LEU:HD11	1:A:115:LEU:CD2	2.37	0.55
1:A:300:THR:HB	6:A:949:HOH:O	2.05	0.55
1:A:113:LEU:HG	1:A:161:VAL:HG21	1.88	0.55
1:A:20:PRO:HG2	1:A:51:ILE:HG22	1.89	0.55
1:A:250:ARG:HH12	1:A:256:GLU:HG3	1.71	0.55
1:A:57:THR:HB	1:A:294:ASP:O	2.07	0.55
1:A:305:PRO:O	1:A:307:PRO:HD3	2.07	0.54
1:A:139:SER:HB3	1:A:144:TYR:CD1	2.43	0.54
1:A:57:THR:CG2	1:A:188:ASP:CB	2.84	0.54
1:A:95:ARG:HE	1:A:95:ARG:HA	1.71	0.54
2:B:116:LEU:CD1	2:B:124:MET:HE1	2.38	0.54
1:A:164:ARG:HD3	1:A:171:PHE:CE2	2.44	0.53
1:A:238:ILE:HD11	2:B:123:GLU:OE1	2.09	0.53
2:B:144:MET:O	2:B:146:THR:N	2.41	0.53
1:A:354:GLY:O	1:A:355:LYS:HD3	2.09	0.53
1:A:129:VAL:HG22	1:A:137:VAL:HB	1.91	0.53
1:A:302:GLN:NE2	1:A:347:ASN:H	2.07	0.53
2:B:86:ARG:NH1	2:B:86:ARG:CG	2.69	0.52
1:A:348:ARG:HD3	2:B:83:GLU:OE2	2.09	0.52
1:A:183:ILE:CD1	1:A:293:GLN:HE22	2.22	0.52
1:A:238:ILE:HD13	2:B:123:GLU:HB3	1.91	0.52
1:A:129:VAL:CG2	1:A:137:VAL:HB	2.40	0.52
1:A:113:LEU:HD12	1:A:114:THR:N	2.25	0.51
1:A:179:ASN:HB3	1:A:181:ALA:H	1.76	0.51
1:A:246:ARG:HB2	2:B:145:MET:CE	2.37	0.51
1:A:132:MET:HB2	1:A:136:VAL:N	2.25	0.51
1:A:246:ARG:HG2	6:A:909:HOH:O	2.10	0.50
2:B:86:ARG:HG2	2:B:86:ARG:NH1	2.15	0.50
1:A:77:PRO:HG2	1:A:83:SER:HB3	1.93	0.50
1:A:119:ARG:HD3	6:A:920:HOH:O	2.11	0.50
1:A:85:LEU:CD2	1:A:88:ARG:HG3	2.37	0.50
2:B:82:GLU:OE2	2:B:138:TYR:HE2	1.94	0.50
1:A:151:VAL:HG23	1:A:160:ALA:C	2.32	0.50
1:A:164:ARG:HG2	1:A:171:PHE:CE1	2.46	0.50
1:A:78:VAL:O	1:A:80:PRO:HD3	2.12	0.49
1:A:50:LEU:HD21	1:A:119:ARG:HD2	1.95	0.49
1:A:152:LYS:NZ	6:A:980:HOH:O	2.40	0.49
1:A:297:GLN:CA	1:A:297:GLN:HE21	2.26	0.49
1:A:193:ALA:HA	1:A:300:THR:CG2	2.42	0.49
2:B:116:LEU:CD1	2:B:124:MET:CE	2.91	0.48
1:A:32:LYS:NZ	1:A:320:GLY:HA3	2.28	0.48

Continued on next page...

Continued from previous page...

Atom-1	Atom-2	Interatomic distance (Å)	Clash overlap (Å)
1:A:24:LEU:HD13	1:A:24:LEU:C	2.34	0.48
1:A:150:ARG:HG2	1:A:150:ARG:NH1	2.28	0.48
1:A:154:THR:C	1:A:156:ASP:N	2.63	0.48
1:A:179:ASN:N	1:A:183:ILE:O	2.37	0.48
1:A:269:ILE:CG2	1:A:269:ILE:O	2.61	0.48
1:A:352:VAL:O	1:A:352:VAL:CG1	2.61	0.48
1:A:151:VAL:HG22	1:A:159:TYR:HB3	1.90	0.48
1:A:246:ARG:CB	2:B:145:MET:CE	2.92	0.48
1:A:71:LEU:HB3	1:A:115:LEU:HD11	1.96	0.48
1:A:304:ASN:HD22	1:A:305:PRO:N	2.12	0.47
1:A:102:SER:HA	6:A:1020:HOH:O	2.13	0.47
1:A:75:TYR:HB3	1:A:176:VAL:CG2	2.45	0.47
1:A:302:GLN:HE21	1:A:347:ASN:H	1.62	0.47
1:A:215:VAL:HG21	1:A:241:LEU:HD23	1.97	0.47
1:A:81:ASN:OD1	1:A:93:ILE:HG12	2.14	0.47
1:A:103:SER:OG	1:A:108:HIS:CD2	2.68	0.47
1:A:107:GLY:O	1:A:180:ALA:HA	2.14	0.47
1:A:246:ARG:CB	2:B:145:MET:HE2	2.39	0.47
1:A:133:ALA:N	1:A:136:VAL:H	2.12	0.47
1:A:306:PHE:HD1	6:A:1031:HOH:O	1.97	0.47
1:A:195:MET:HE2	1:A:337:GLN:HB3	1.98	0.46
1:A:57:THR:HG22	1:A:297:GLN:HG3	1.97	0.46
2:B:82:GLU:OE2	2:B:138:TYR:CE2	2.68	0.46
2:B:83:GLU:O	2:B:87:GLU:HG3	2.15	0.46
1:A:139:SER:HB3	1:A:144:TYR:CE1	2.50	0.46
1:A:35:ASN:HD22	1:A:318:ALA:HB1	1.79	0.46
1:A:154:THR:HB	1:A:156:ASP:HB3	1.97	0.46
2:B:95:ASP:HB3	6:B:302:HOH:O	2.15	0.46
1:A:153:GLU:CG	1:A:154:THR:H	2.28	0.46
2:B:137:ASN:ND2	2:B:137:ASN:C	2.63	0.46
2:B:106:ARG:NH2	6:B:229:HOH:O	2.39	0.46
1:A:338:ARG:HD2	6:B:177:HOH:O	2.15	0.45
2:B:116:LEU:HD12	2:B:124:MET:HE1	1.98	0.45
2:B:144:MET:HG3	2:B:145:MET:N	2.31	0.45
1:A:62:VAL:HG22	1:A:108:HIS:CD2	2.51	0.45
1:A:72:GLN:NE2	1:A:82:LEU:O	2.47	0.45
1:A:85:LEU:HD13	1:A:92:VAL:HG13	1.97	0.45
1:A:330:LEU:O	1:A:334:ILE:HG13	2.17	0.45
2:B:102:ALA:HA	2:B:125:ILE:CD1	2.46	0.45
1:A:55:VAL:HG12	1:A:56:ALA:N	2.32	0.45
1:A:186:THR:HG23	1:A:187:ALA:O	2.17	0.45

Continued on next page...

Continued from previous page...

Atom-1	Atom-2	Interatomic distance (Å)	Clash overlap (Å)
2:B:102:ALA:HA	2:B:125:ILE:HD11	1.99	0.45
1:A:113:LEU:HD11	1:A:115:LEU:HD21	1.97	0.44
2:B:116:LEU:HB3	2:B:120:GLU:HB2	1.97	0.44
1:A:196:PRO:HB3	1:A:275:PHE:CE2	2.51	0.44
1:A:141:HIS:O	1:A:143:GLY:N	2.50	0.44
1:A:279:VAL:O	1:A:283:LEU:HG	2.17	0.44
1:A:348:ARG:HD3	2:B:83:GLU:CD	2.38	0.44
1:A:163:TYR:HB2	6:A:965:HOH:O	2.18	0.44
1:A:20:PRO:HG2	1:A:51:ILE:CG2	2.47	0.44
1:A:79:ASN:HB3	1:A:82:LEU:HG	1.99	0.44
1:A:129:VAL:HG13	1:A:129:VAL:O	2.18	0.44
1:A:155:SER:OG	1:A:155:SER:O	2.32	0.44
2:B:93:ASP:CG	2:B:97:ASN:O	2.56	0.44
1:A:117:LYS:CD	1:A:159:TYR:HE1	2.29	0.43
1:A:152:LYS:CD	1:A:162:GLN:NE2	2.69	0.43
1:A:40:PHE:N	1:A:40:PHE:CD1	2.87	0.43
1:A:288:HIS:HA	1:A:292:ALA:O	2.17	0.43
1:A:132:MET:HG3	1:A:135:GLY:CA	2.45	0.43
1:A:179:ASN:HB2	1:A:183:ILE:H	1.84	0.43
1:A:193:ALA:HA	1:A:300:THR:HG21	2.00	0.43
1:A:269:ILE:HD13	1:A:269:ILE:HA	1.80	0.43
1:A:165:ARG:HG2	1:A:165:ARG:NH1	2.31	0.43
1:A:219:LEU:HD23	1:A:219:LEU:HA	1.82	0.43
1:A:315:VAL:O	1:A:322:SER:HA	2.19	0.43
1:A:118:GLU:O	1:A:121:ASP:HB2	2.19	0.43
1:A:133:ALA:H	1:A:136:VAL:H	1.67	0.43
1:A:141:HIS:O	1:A:142:ALA:C	2.57	0.43
1:A:161:VAL:HB	1:A:174:VAL:CG2	2.49	0.43
1:A:165:ARG:NE	6:A:1028:HOH:O	2.48	0.42
1:A:242:TRP:NE1	2:B:124:MET:HB3	2.33	0.42
1:A:117:LYS:O	1:A:120:LEU:HB3	2.19	0.42
1:A:150:ARG:HG2	1:A:150:ARG:HH11	1.84	0.42
1:A:119:ARG:O	1:A:119:ARG:HG3	2.19	0.42
1:A:141:HIS:C	1:A:143:GLY:N	2.71	0.42
1:A:113:LEU:HD11	1:A:115:LEU:HD23	2.01	0.42
1:A:124:ARG:HG2	1:A:129:VAL:HG13	1.96	0.42
1:A:117:LYS:NZ	1:A:153:GLU:OE2	2.48	0.42
1:A:129:VAL:O	1:A:129:VAL:CG1	2.68	0.41
1:A:352:VAL:O	1:A:352:VAL:HG12	2.20	0.41
1:A:132:MET:HA	1:A:136:VAL:O	2.21	0.41
1:A:137:VAL:HG21	1:A:144:TYR:OH	2.20	0.41

Continued on next page...

Continued from previous page...

Atom-1	Atom-2	Interatomic distance (Å)	Clash overlap (Å)
1:A:132:MET:HB2	1:A:137:VAL:N	2.35	0.41
1:A:42:LEU:HD21	1:A:324:MET:HE2	2.01	0.41
1:A:123:LEU:HD23	1:A:128:LEU:HD12	2.03	0.41
1:A:60:LEU:HD21	1:A:298:HIS:ND1	2.36	0.41
1:A:94:ALA:O	1:A:95:ARG:C	2.58	0.41
1:A:197:HIS:CD2	1:A:199:SER:OG	2.62	0.41
1:A:130:THR:O	1:A:138:ALA:HB3	2.22	0.40
1:A:235:ARG:HE	1:A:235:ARG:HB3	1.66	0.40
2:B:105:LEU:HD12	2:B:125:ILE:HD11	2.03	0.40

There are no symmetry-related clashes.

5.3 Torsion angles [i](#)

5.3.1 Protein backbone [i](#)

In the following table, the Percentiles column shows the percent Ramachandran outliers of the chain as a percentile score with respect to all X-ray entries followed by that with respect to entries of similar resolution.

The Analysed column shows the number of residues for which the backbone conformation was analysed, and the total number of residues.

Mol	Chain	Analysed	Favoured	Allowed	Outliers	Percentiles	
1	A	347/358 (97%)	315 (91%)	23 (7%)	9 (3%)	5	3
2	B	67/69 (97%)	63 (94%)	2 (3%)	2 (3%)	4	2
All	All	414/427 (97%)	378 (91%)	25 (6%)	11 (3%)	5	2

All (11) Ramachandran outliers are listed below:

Mol	Chain	Res	Type
1	A	86	PHE
1	A	135	GLY
1	A	155	SER
1	A	210	THR
2	B	143	GLN
2	B	145	MET
1	A	84	LYS
1	A	153	GLU
1	A	234	ASP

Continued on next page...

Continued from previous page...

Mol	Chain	Res	Type
1	A	179	ASN
1	A	131	GLY

5.3.2 Protein sidechains ⓘ

In the following table, the Percentiles column shows the percent sidechain outliers of the chain as a percentile score with respect to all X-ray entries followed by that with respect to entries of similar resolution.

The Analysed column shows the number of residues for which the sidechain conformation was analysed, and the total number of residues.

Mol	Chain	Analysed	Rotameric	Outliers	Percentiles	
1	A	271/274 (99%)	239 (88%)	32 (12%)	5	4
2	B	59/59 (100%)	52 (88%)	7 (12%)	5	4
All	All	330/333 (99%)	291 (88%)	39 (12%)	5	4

All (39) residues with a non-rotameric sidechain are listed below:

Mol	Chain	Res	Type
1	A	35	ASN
1	A	49	SER
1	A	57	THR
1	A	91	GLU
1	A	92	VAL
1	A	97	ASP
1	A	102	SER
1	A	119	ARG
1	A	129	VAL
1	A	132	MET
1	A	134	ASP
1	A	137	VAL
1	A	140	ASN
1	A	150	ARG
1	A	154	THR
1	A	155	SER
1	A	163	TYR
1	A	165	ARG
1	A	170	ASP
1	A	174	VAL
1	A	204	SER

Continued on next page...

Continued from previous page...

Mol	Chain	Res	Type
1	A	207	SER
1	A	211	SER
1	A	223	ARG
1	A	233	LEU
1	A	253	VAL
1	A	256	GLU
1	A	290	VAL
1	A	297	GLN
1	A	304	ASN
1	A	317	SER
1	A	327	ARG
2	B	79	THR
2	B	95	ASP
2	B	105	LEU
2	B	127	GLU
2	B	137	ASN
2	B	144	MET
2	B	145	MET

Some sidechains can be flipped to improve hydrogen bonding and reduce clashes. All (18) such sidechains are listed below:

Mol	Chain	Res	Type
1	A	35	ASN
1	A	46	HIS
1	A	101	ASN
1	A	108	HIS
1	A	146	GLN
1	A	162	GLN
1	A	197	HIS
1	A	260	GLN
1	A	293	GLN
1	A	297	GLN
1	A	298	HIS
1	A	302	GLN
1	A	304	ASN
1	A	336	GLN
2	B	111	ASN
2	B	135	GLN
2	B	137	ASN
2	B	143	GLN

5.3.3 RNA ⓘ

There are no RNA molecules in this entry.

5.4 Non-standard residues in protein, DNA, RNA chains ⓘ

There are no non-standard protein/DNA/RNA residues in this entry.

5.5 Carbohydrates ⓘ

There are no carbohydrates in this entry.

5.6 Ligand geometry ⓘ

Of 6 ligands modelled in this entry, 5 are monoatomic - leaving 1 for Mogul analysis.

In the following table, the Counts columns list the number of bonds (or angles) for which Mogul statistics could be retrieved, the number of bonds (or angles) that are observed in the model and the number of bonds (or angles) that are defined in the Chemical Component Dictionary. The Link column lists molecule types, if any, to which the group is linked. The Z score for a bond length (or angle) is the number of standard deviations the observed value is removed from the expected value. A bond length (or angle) with $|Z| > 2$ is considered an outlier worth inspection. RMSZ is the root-mean-square of all Z scores of the bond lengths (or angles).

Mol	Type	Chain	Res	Link	Bond lengths			Bond angles		
					Counts	RMSZ	# Z > 2	Counts	RMSZ	# Z > 2
4	EMA	A	900	3	22,27,27	7.32	5 (22%)	22,41,41	2.48	4 (18%)

In the following table, the Chirals column lists the number of chiral outliers, the number of chiral centers analysed, the number of these observed in the model and the number defined in the Chemical Component Dictionary. Similar counts are reported in the Torsion and Rings columns. '-' means no outliers of that kind were identified.

Mol	Type	Chain	Res	Link	Chirals	Torsions	Rings
4	EMA	A	900	3	-	8/17/20/20	0/2/2/2

All (5) bond length outliers are listed below:

Mol	Chain	Res	Type	Atoms	Z	Observed(Å)	Ideal(Å)
4	A	900	EMA	PA-O3A	26.48	1.87	1.58
4	A	900	EMA	PA-C5'	-19.53	1.31	1.80
4	A	900	EMA	PA-O2A	-7.38	1.39	1.56

Continued on next page...

Continued from previous page...

Mol	Chain	Res	Type	Atoms	Z	Observed(Å)	Ideal(Å)
4	A	900	EMA	O5'-C5'	3.37	1.47	1.42
4	A	900	EMA	C4-N3	2.99	1.39	1.35

All (4) bond angle outliers are listed below:

Mol	Chain	Res	Type	Atoms	Z	Observed(°)	Ideal(°)
4	A	900	EMA	O2A-PA-O1A	6.98	133.37	110.07
4	A	900	EMA	PB-O3A-PA	5.54	150.13	132.56
4	A	900	EMA	C4'-C1'-N9	5.37	121.58	111.19
4	A	900	EMA	O1A-PA-C5'	-2.85	102.81	112.92

There are no chirality outliers.

All (8) torsion outliers are listed below:

Mol	Chain	Res	Type	Atoms
4	A	900	EMA	PA-C5'-O5'-C4'
4	A	900	EMA	N9-C1'-C4'-O5'
4	A	900	EMA	C4'-C1'-N9-C4
4	A	900	EMA	PA-O3A-PB-O1B
4	A	900	EMA	C1'-C4'-O5'-C5'
4	A	900	EMA	C4'-C1'-N9-C8
4	A	900	EMA	PA-O3A-PB-O2B
4	A	900	EMA	O5'-C5'-PA-O1A

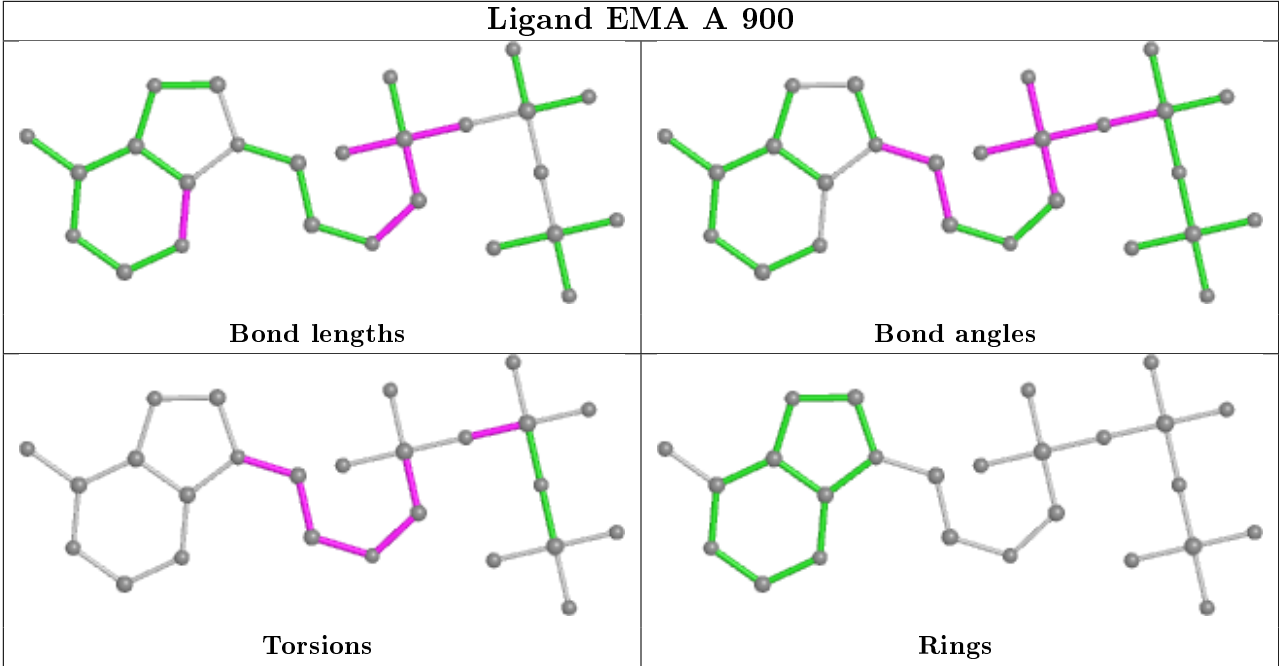
There are no ring outliers.

1 monomer is involved in 1 short contact:

Mol	Chain	Res	Type	Clashes	Symm-Clashes
4	A	900	EMA	1	0

The following is a two-dimensional graphical depiction of Mogul quality analysis of bond lengths, bond angles, torsion angles, and ring geometry for all instances of the Ligand of Interest. In addition, ligands with molecular weight > 250 and outliers as shown on the validation Tables will also be included. For torsion angles, if less than 5% of the Mogul distribution of torsion angles is within 10 degrees of the torsion angle in question, then that torsion angle is considered an outlier. Any bond that is central to one or more torsion angles identified as an outlier by Mogul will be highlighted in the graph. For rings, the root-mean-square deviation (RMSD) between the ring in question and similar rings identified by Mogul is calculated over all ring torsion angles. If the average RMSD is greater than 60 degrees and the minimal RMSD between the ring in question and any Mogul-identified rings is also greater than 60 degrees, then that ring is considered an outlier. The outliers are highlighted in purple. The color gray indicates Mogul did not find sufficient

equivalents in the CSD to analyse the geometry.



5.7 Other polymers ⓘ

There are no such residues in this entry.

5.8 Polymer linkage issues ⓘ

The following chains have linkage breaks:

Mol	Chain	Number of breaks
1	A	2

All chain breaks are listed below:

Model	Chain	Residue-1	Atom-1	Residue-2	Atom-2	Distance (Å)
1	A	233:LEU	C	234:ASP	N	1.04
1	A	134:ASP	C	135:GLY	N	1.00

6 Fit of model and data

6.1 Protein, DNA and RNA chains

In the following table, the column labelled ‘#RSRZ> 2’ contains the number (and percentage) of RSRZ outliers, followed by percent RSRZ outliers for the chain as percentile scores relative to all X-ray entries and entries of similar resolution. The OWAB column contains the minimum, median, 95th percentile and maximum values of the occupancy-weighted average B-factor per residue. The column labelled ‘Q< 0.9’ lists the number of (and percentage) of residues with an average occupancy less than 0.9.

Mol	Chain	Analysed	<RSRZ>	#RSRZ>2	OWAB(Å ²)	Q<0.9
1	A	351/358 (98%)	0.48	33 (9%) 8 7	9, 26, 47, 58	0
2	B	69/69 (100%)	0.41	5 (7%) 15 14	14, 22, 36, 51	0
All	All	420/427 (98%)	0.47	38 (9%) 9 8	9, 25, 47, 58	0

All (38) RSRZ outliers are listed below:

Mol	Chain	Res	Type	RSRZ
1	A	364	ALA	16.9
1	A	133	ALA	8.8
1	A	168	GLY	8.2
1	A	167	GLY	7.1
2	B	146	THR	6.3
1	A	363	GLY	5.7
1	A	130	THR	5.5
2	B	145	MET	5.2
1	A	132	MET	5.1
1	A	92	VAL	4.7
1	A	134	ASP	4.2
1	A	89	ALA	4.0
1	A	233	LEU	3.7
1	A	95	ARG	3.7
2	B	147	ALA	3.5
1	A	155	SER	3.4
1	A	225	ALA	3.4
1	A	135	GLY	3.2
1	A	362	LEU	3.2
1	A	98	ASN	3.1
1	A	8	GLY	3.1
2	B	143	GLN	2.9
1	A	124	ARG	2.7
1	A	224	ARG	2.7

Continued on next page...

Continued from previous page...

Mol	Chain	Res	Type	RSRZ
1	A	96	ALA	2.6
1	A	152	LYS	2.6
1	A	106	HIS	2.6
1	A	176	VAL	2.5
1	A	91	GLU	2.4
1	A	90	PRO	2.4
1	A	169	ASP	2.4
1	A	223	ARG	2.4
1	A	131	GLY	2.3
1	A	159	TYR	2.3
2	B	144	MET	2.2
1	A	63	HIS	2.1
1	A	156	ASP	2.0
1	A	359	ASP	2.0

6.2 Non-standard residues in protein, DNA, RNA chains [i](#)

There are no non-standard protein/DNA/RNA residues in this entry.

6.3 Carbohydrates [i](#)

There are no carbohydrates in this entry.

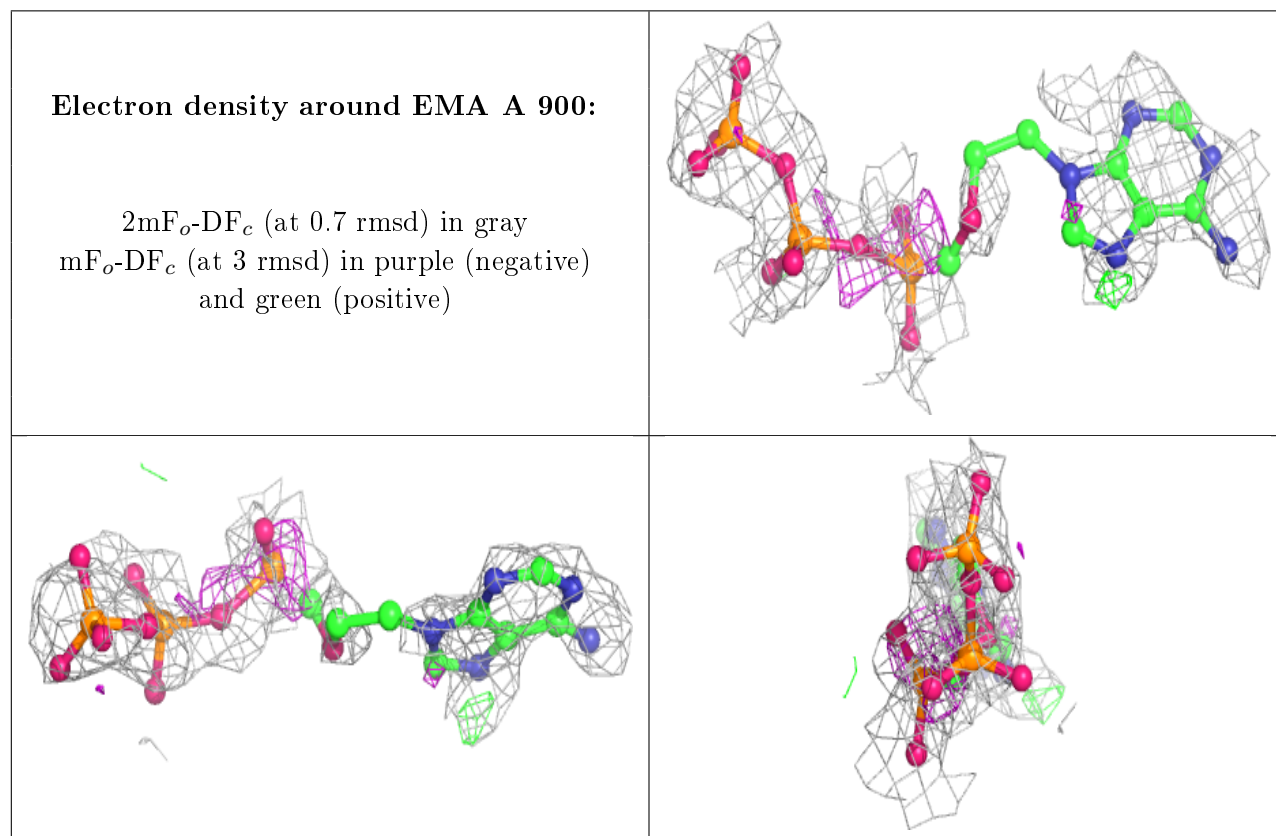
6.4 Ligands [i](#)

In the following table, the Atoms column lists the number of modelled atoms in the group and the number defined in the chemical component dictionary. The B-factors column lists the minimum, median, 95th percentile and maximum values of B factors of atoms in the group. The column labelled 'Q< 0.9' lists the number of atoms with occupancy less than 0.9.

Mol	Type	Chain	Res	Atoms	RSCC	RSR	B-factors(\AA^2)	Q<0.9
3	MG	A	903	1/1	0.65	0.40	48,48,48,48	0
4	EMA	A	900	26/26	0.69	0.32	54,64,67,68	0
3	MG	A	902	1/1	0.94	0.07	19,19,19,19	0
3	MG	A	901	1/1	0.96	0.12	19,19,19,19	0
5	CA	B	801	1/1	0.97	0.05	34,34,34,34	0
5	CA	B	800	1/1	0.97	0.06	25,25,25,25	0

The following is a graphical depiction of the model fit to experimental electron density of all instances of the Ligand of Interest. In addition, ligands with molecular weight > 250 and outliers

as shown on the geometry validation Tables will also be included. Each fit is shown from different orientation to approximate a three-dimensional view.



6.5 Other polymers ⓘ

There are no such residues in this entry.