



Full wwPDB EM Validation Report ⓘ

Sep 15, 2022 – 01:27 pm BST

PDB ID : 7ZSK
EMDB ID : EMD-14945
Title : K3DAK4 bimodule core of BGC11 from *Brevibacillus brevis*
Authors : Tittes, Y.U.; Herbst, D.A.; Jakob, R.P.; Maier, T.
Deposited on : 2022-05-07
Resolution : 6.80 Å (reported)
Based on initial models : 7MZF, 7ZMC, 7ZM9, 7MZD, 7MZA

This is a Full wwPDB EM Validation Report for a publicly released PDB entry.

We welcome your comments at validation@mail.wwpdb.org

A user guide is available at

<https://www.wwpdb.org/validation/2017/EMValidationReportHelp>

with specific help available everywhere you see the ⓘ symbol.

The types of validation reports are described at <http://www.wwpdb.org/validation/2017/FAQs#types>.

The following versions of software and data (see [references ⓘ](#)) were used in the production of this report:

EMDB validation analysis : 0.0.1.dev8
MolProbity : 4.02b-467
Percentile statistics : 20191225.v01 (using entries in the PDB archive December 25th 2019)
Ideal geometry (proteins) : Engh & Huber (2001)
Ideal geometry (DNA, RNA) : Parkinson et al. (1996)
Validation Pipeline (wwPDB-VP) : 2.30

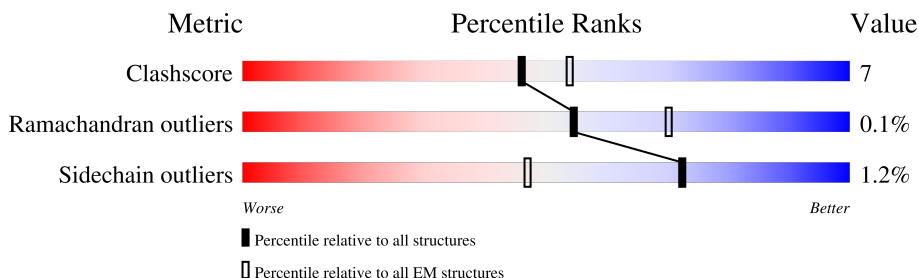
1 Overall quality at a glance

The following experimental techniques were used to determine the structure:

ELECTRON MICROSCOPY

The reported resolution of this entry is 6.80 Å.

Percentile scores (ranging between 0-100) for global validation metrics of the entry are shown in the following graphic. The table shows the number of entries on which the scores are based.



Metric	Whole archive (#Entries)	EM structures (#Entries)
Clashscore	158937	4297
Ramachandran outliers	154571	4023
Sidechain outliers	154315	3826

The table below summarises the geometric issues observed across the polymeric chains and their fit to the map. The red, orange, yellow and green segments of the bar indicate the fraction of residues that contain outliers for ≥ 3 , 2, 1 and 0 types of geometric quality criteria respectively. A grey segment represents the fraction of residues that are not modelled. The numeric value for each fraction is indicated below the corresponding segment, with a dot representing fractions $\leq 5\%$. The upper red bar (where present) indicates the fraction of residues that have poor fit to the EM map (all-atom inclusion $< 40\%$). The numeric value is given above the bar.

Mol	Chain	Length	Quality of chain
1	A	1690	<div> <div>15%</div> <div>74%</div> <div>14%</div> <div>12%</div> </div>
1	B	1690	<div> <div>16%</div> <div>72%</div> <div>15%</div> <div>13%</div> </div>
1	C	1690	<div> <div>17%</div> <div>73%</div> <div>13%</div> <div>13%</div> </div>
1	D	1690	<div> <div>16%</div> <div>75%</div> <div>12%</div> <div>12%</div> </div>

2 Entry composition

There is only 1 type of molecule in this entry. The entry contains 91396 atoms, of which 45268 are hydrogens and 0 are deuteriums.

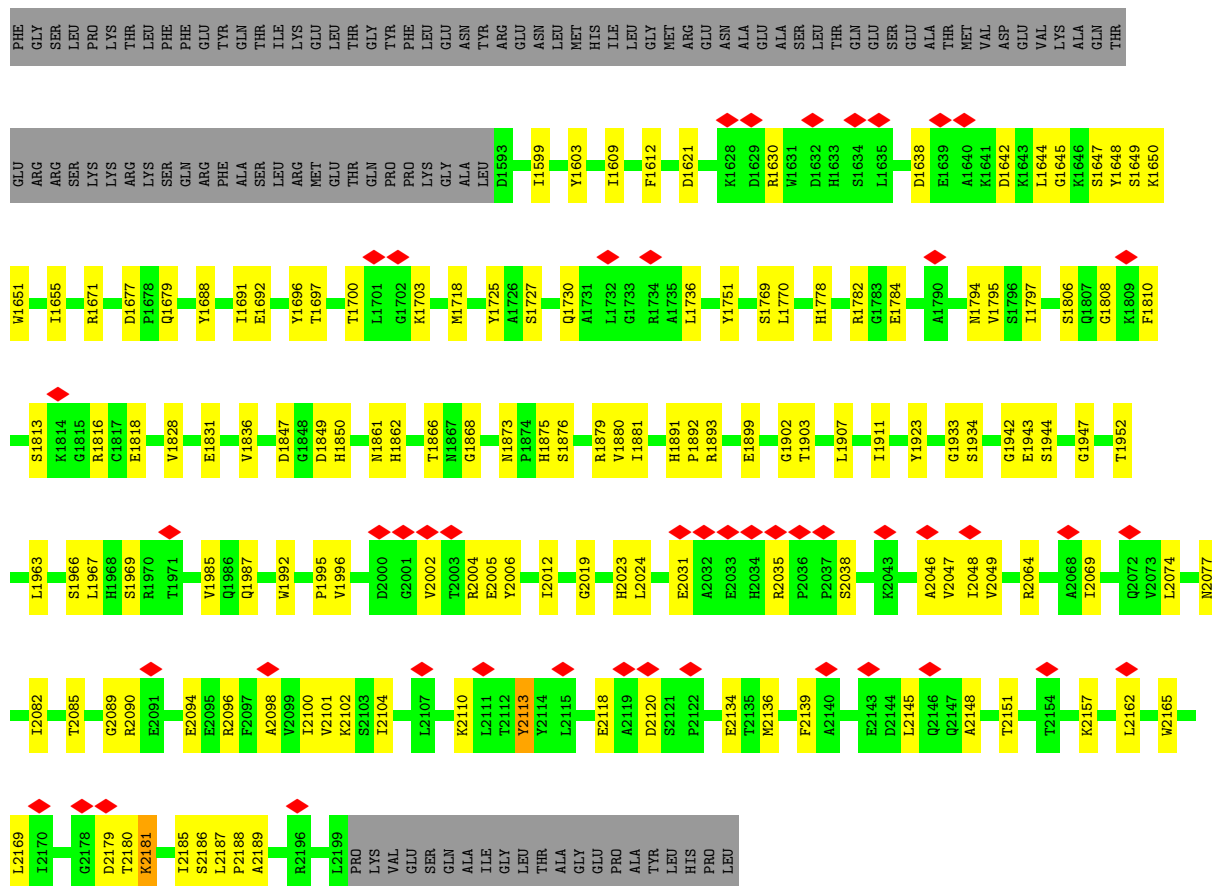
In the tables below, the AltConf column contains the number of residues with at least one atom in alternate conformation and the Trace column contains the number of residues modelled with at most 2 atoms.

- Molecule 1 is a protein called Putative polyketide synthase.

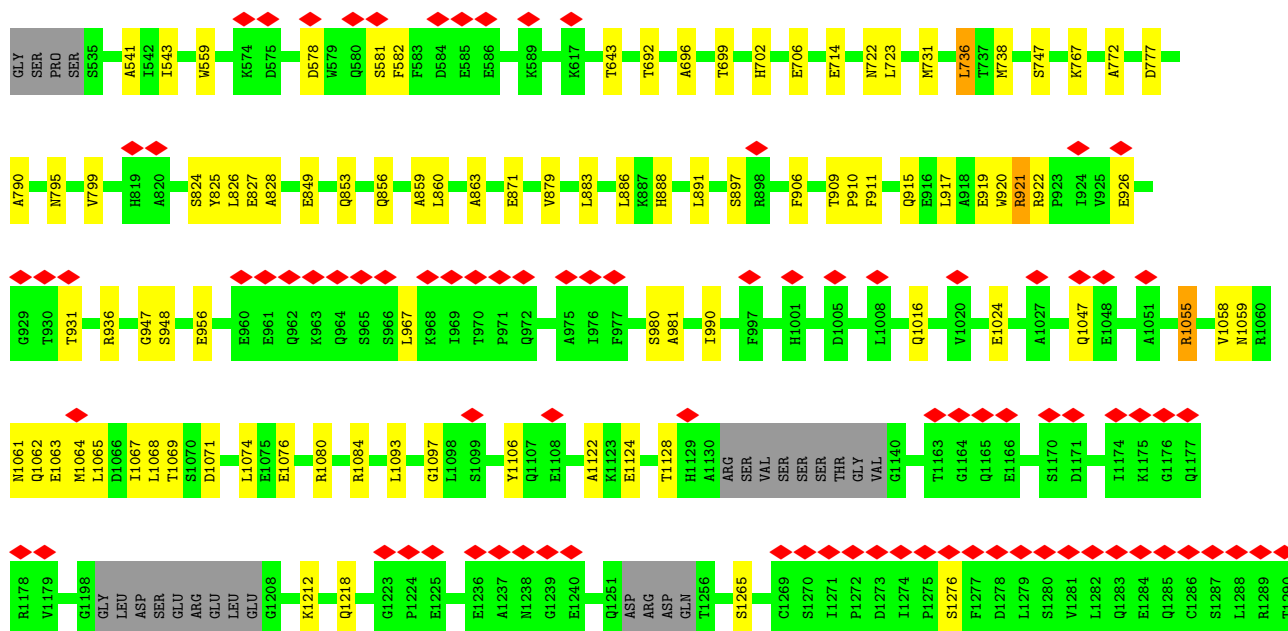
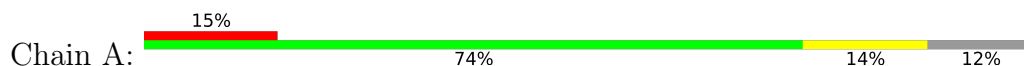
Mol	Chain	Residues	Atoms						AltConf	Trace
1	B	1476	Total	C	H	N	O	S	0	0
			22811	7290	11298	1973	2201	49		
1	A	1482	Total	C	H	N	O	S	0	0
			22887	7314	11336	1979	2208	50		
1	D	1482	Total	C	H	N	O	S	0	0
			22887	7314	11336	1979	2208	50		
1	C	1476	Total	C	H	N	O	S	0	0
			22811	7290	11298	1973	2201	49		

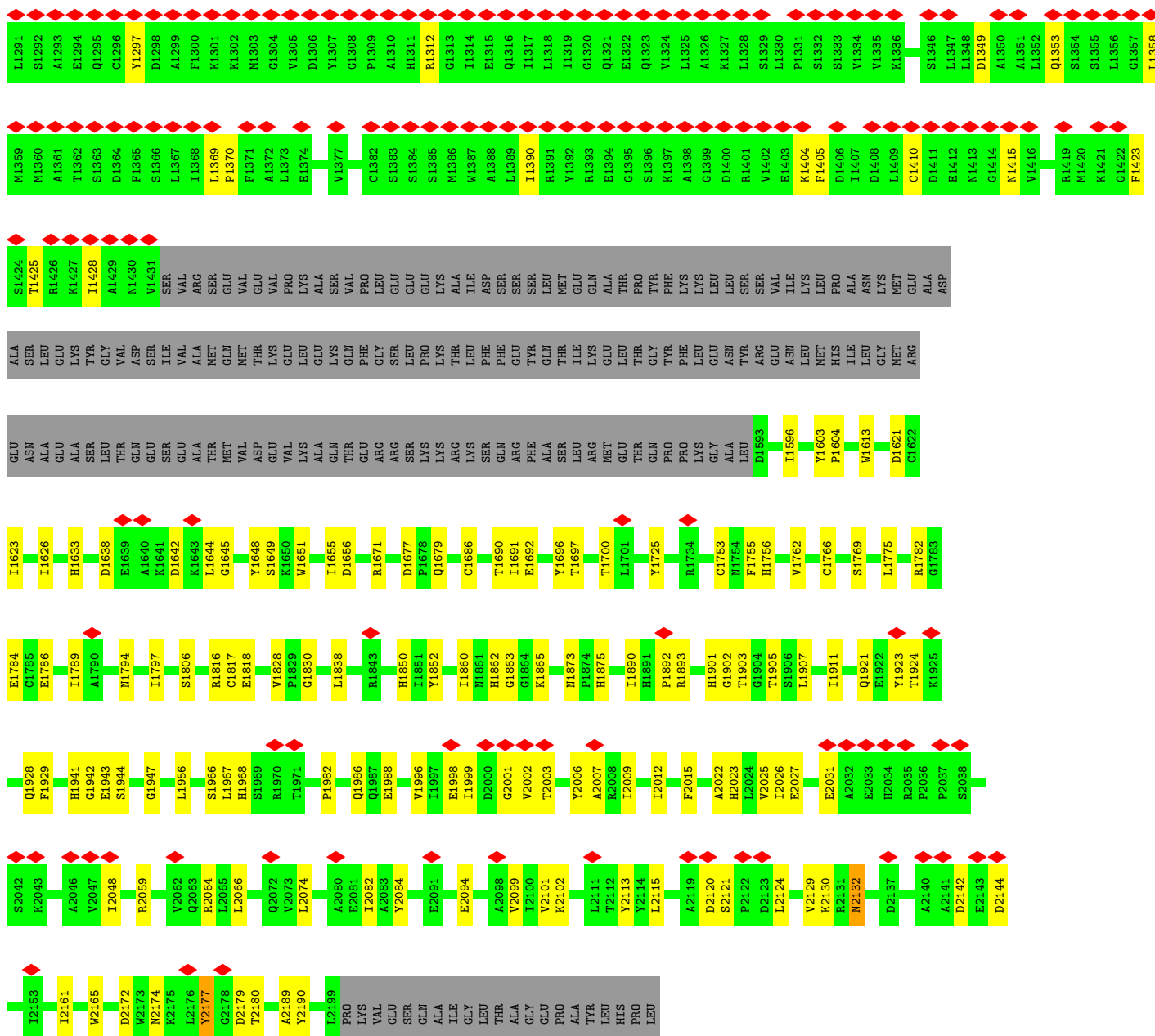
There are 4 discrepancies between the modelled and reference sequences:

Chain	Residue	Modelled	Actual	Comment	Reference
B	531	GLY	-	expression tag	UNP C0ZGQ6
A	531	GLY	-	expression tag	UNP C0ZGQ6
D	531	GLY	-	expression tag	UNP C0ZGQ6
C	531	GLY	-	expression tag	UNP C0ZGQ6

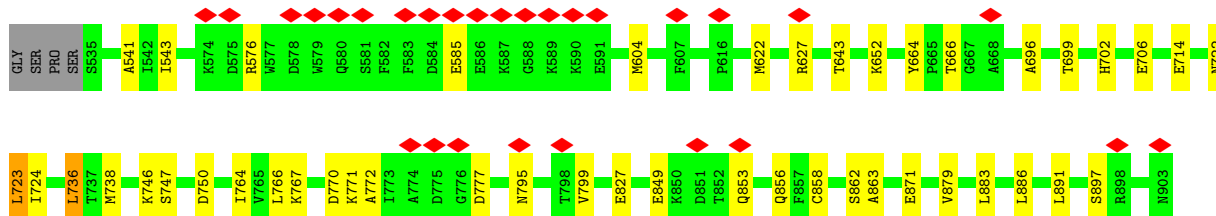
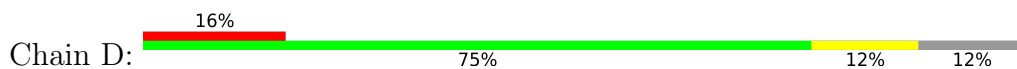


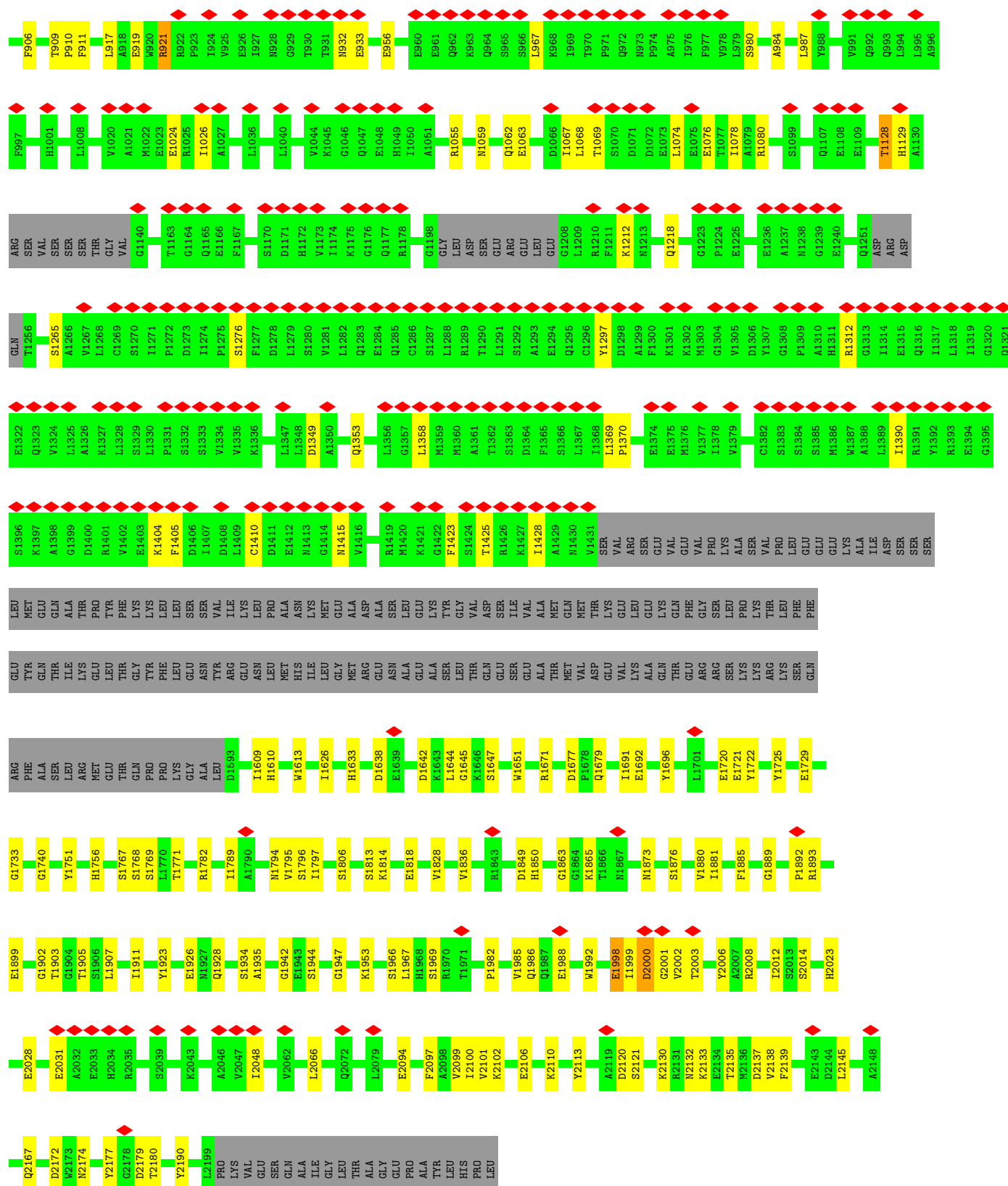
• Molecule 1: Putative polyketide synthase



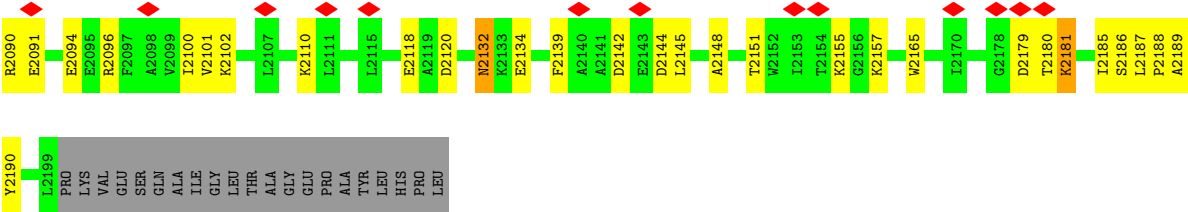


• Molecule 1: Putative polyketide synthase









4 Experimental information

Property	Value	Source
EM reconstruction method	SINGLE PARTICLE	Depositor
Imposed symmetry	POINT, C1	Depositor
Number of particles used	293391	Depositor
Resolution determination method	FSC 0.143 CUT-OFF	Depositor
CTF correction method	PHASE FLIPPING AND AMPLITUDE CORRECTION	Depositor
Microscope	FEI TITAN KRIOS	Depositor
Voltage (kV)	300	Depositor
Electron dose ($e^-/\text{\AA}^2$)	67	Depositor
Minimum defocus (nm)	800	Depositor
Maximum defocus (nm)	1800	Depositor
Magnification	Not provided	
Image detector	GATAN K2 SUMMIT (4k x 4k)	Depositor
Maximum map value	1.213	Depositor
Minimum map value	-0.559	Depositor
Average map value	-0.002	Depositor
Map value standard deviation	0.043	Depositor
Recommended contour level	0.256	Depositor
Map size (Å)	541.696, 541.696, 541.696	wwPDB
Map dimensions	256, 256, 256	wwPDB
Map angles (°)	90.0, 90.0, 90.0	wwPDB
Pixel spacing (Å)	2.116, 2.116, 2.116	Depositor

5 Model quality [i](#)

5.1 Standard geometry [i](#)

The Z score for a bond length (or angle) is the number of standard deviations the observed value is removed from the expected value. A bond length (or angle) with $|Z| > 5$ is considered an outlier worth inspection. RMSZ is the root-mean-square of all Z scores of the bond lengths (or angles).

Mol	Chain	Bond lengths		Bond angles	
		RMSZ	$\# Z > 5$	RMSZ	$\# Z > 5$
1	A	0.30	0/11798	0.52	0/15969
1	B	0.31	0/11758	0.53	0/15915
1	C	0.30	0/11758	0.52	0/15915
1	D	0.30	0/11798	0.52	0/15969
All	All	0.30	0/47112	0.52	0/63768

There are no bond length outliers.

There are no bond angle outliers.

There are no chirality outliers.

There are no planarity outliers.

5.2 Too-close contacts [i](#)

In the following table, the Non-H and H(model) columns list the number of non-hydrogen atoms and hydrogen atoms in the chain respectively. The H(added) column lists the number of hydrogen atoms added and optimized by MolProbity. The Clashes column lists the number of clashes within the asymmetric unit, whereas Symm-Clashes lists symmetry-related clashes.

Mol	Chain	Non-H	H(model)	H(added)	Clashes	Symm-Clashes
1	A	11551	11336	11357	151	0
1	B	11513	11298	11319	169	0
1	C	11513	11298	11319	162	0
1	D	11551	11336	11357	137	0
All	All	46128	45268	45352	602	0

The all-atom clashscore is defined as the number of clashes found per 1000 atoms (including hydrogen atoms). The all-atom clashscore for this structure is 7.

All (602) close contacts within the same asymmetric unit are listed below, sorted by their clash magnitude.

Atom-1	Atom-2	Interatomic distance (Å)	Clash overlap (Å)
1:A:1064:MET:HG3	1:C:1061:ASN:OD1	1.60	1.01
1:B:856:GLN:NE2	1:B:911:PHE:O	1.96	0.99
1:B:2100:ILE:O	1:B:2110:LYS:NZ	2.04	0.91
1:A:722:ASN:ND2	1:A:871:GLU:OE1	2.04	0.90
1:D:722:ASN:ND2	1:D:871:GLU:OE1	2.05	0.90
1:C:856:GLN:NE2	1:C:906:PHE:O	2.05	0.90
1:B:1769:SER:OG	1:B:1944:SER:O	1.90	0.89
1:A:856:GLN:NE2	1:A:911:PHE:O	2.05	0.89
1:A:2094:GLU:OE1	1:A:2094:GLU:N	2.05	0.89
1:C:1725:TYR:OH	1:C:1797:ILE:O	1.91	0.88
1:D:1794:ASN:ND2	1:D:1942:GLY:O	2.08	0.86
1:D:2094:GLU:N	1:D:2094:GLU:OE1	2.08	0.86
1:B:2094:GLU:N	1:B:2094:GLU:OE1	2.09	0.86
1:C:722:ASN:ND2	1:C:871:GLU:OE1	2.09	0.85
1:C:1769:SER:OG	1:C:1944:SER:O	1.92	0.85
1:C:2100:ILE:O	1:C:2110:LYS:NZ	2.09	0.85
1:A:1794:ASN:ND2	1:A:1942:GLY:O	2.11	0.84
1:A:1769:SER:OG	1:A:1944:SER:O	1.97	0.83
1:D:856:GLN:NE2	1:D:906:PHE:O	2.13	0.82
1:C:849:GLU:OE1	1:C:853:GLN:NE2	2.12	0.81
1:A:2179:ASP:OD1	1:A:2180:THR:N	2.14	0.81
1:A:1047:GLN:O	1:A:1055:ARG:NH2	2.12	0.81
1:B:1847:ASP:O	1:B:2181:LYS:NZ	2.13	0.81
1:B:849:GLU:OE1	1:B:853:GLN:NE2	2.14	0.81
1:D:1998:GLU:OE2	1:D:2002:VAL:N	2.14	0.81
1:B:714:GLU:OE1	1:B:714:GLU:N	2.14	0.80
1:B:856:GLN:NE2	1:B:906:PHE:O	2.15	0.80
1:C:856:GLN:NE2	1:C:911:PHE:O	2.14	0.80
1:D:849:GLU:OE1	1:D:853:GLN:NE2	2.15	0.79
1:B:2064:ARG:NH1	1:B:2189:ALA:O	2.16	0.79
1:D:1769:SER:OG	1:D:1944:SER:O	2.01	0.79
1:B:2012:ILE:O	1:B:2023:HIS:ND1	2.17	0.77
1:B:1794:ASN:ND2	1:B:1942:GLY:O	2.18	0.77
1:A:849:GLU:OE1	1:A:853:GLN:NE2	2.17	0.77
1:A:1818:GLU:OE1	1:A:1818:GLU:N	2.16	0.77
1:D:2179:ASP:OD1	1:D:2180:THR:N	2.18	0.76
1:A:856:GLN:NE2	1:A:906:PHE:O	2.19	0.76
1:B:2148:ALA:O	1:B:2151:THR:OG1	2.04	0.76
1:C:1638:ASP:OD1	1:C:1647:SER:OG	2.05	0.75
1:C:1794:ASN:ND2	1:C:1942:GLY:O	2.19	0.75
1:D:1725:TYR:OH	1:D:1797:ILE:O	2.05	0.74
1:B:2090:ARG:NH2	1:B:2188:PRO:O	2.19	0.74

Continued on next page...

Continued from previous page...

Atom-1	Atom-2	Interatomic distance (Å)	Clash overlap (Å)
1:A:2012:ILE:O	1:A:2023:HIS:ND1	2.21	0.73
1:D:702:HIS:NE2	1:D:706:GLU:OE2	2.21	0.73
1:C:2094:GLU:OE1	1:C:2094:GLU:N	2.20	0.73
1:D:1907:LEU:O	1:D:1911:ILE:HD13	1.89	0.73
1:C:1782:ARG:NH2	1:C:1784:GLU:OE1	2.21	0.73
1:B:1621:ASP:OD2	1:B:1816:ARG:NH2	2.20	0.73
1:C:2037:PRO:O	1:C:2038:SER:OG	2.05	0.73
1:D:1818:GLU:N	1:D:1818:GLU:OE1	2.21	0.73
1:C:2148:ALA:O	1:C:2151:THR:OG1	2.05	0.72
1:C:1323:GLN:OE1	1:C:1391:ARG:NH1	2.21	0.72
1:C:1901:HIS:N	1:C:1912:GLU:OE2	2.22	0.72
1:B:1323:GLN:OE1	1:B:1391:ARG:NH1	2.21	0.72
1:B:1725:TYR:OH	1:B:1797:ILE:O	2.07	0.71
1:A:1725:TYR:OH	1:A:1797:ILE:O	2.07	0.71
1:D:856:GLN:NE2	1:D:911:PHE:O	2.25	0.70
1:A:578:ASP:OD1	1:A:581:SER:OG	2.05	0.69
1:C:714:GLU:N	1:C:714:GLU:OE1	2.25	0.69
1:B:1155:GLU:OE1	1:B:1157:ARG:NH2	2.26	0.68
1:C:2064:ARG:NH1	1:C:2189:ALA:O	2.26	0.68
1:B:1818:GLU:N	1:B:1818:GLU:OE1	2.27	0.68
1:A:1064:MET:CG	1:C:1061:ASN:OD1	2.39	0.68
1:B:1996:VAL:HG23	1:B:2004:ARG:O	1.94	0.68
1:C:1155:GLU:OE1	1:C:1157:ARG:NH2	2.26	0.67
1:C:2012:ILE:O	1:C:2023:HIS:ND1	2.28	0.67
1:B:1677:ASP:OD1	1:B:1679:GLN:N	2.27	0.66
1:B:1850:HIS:NE2	1:B:2186:SER:OG	2.28	0.66
1:C:1047:GLN:O	1:C:1055:ARG:NH2	2.28	0.66
1:A:1782:ARG:NH2	1:A:1784:GLU:OE1	2.28	0.66
1:A:1016:GLN:OE1	1:A:1106:TYR:OH	2.07	0.66
1:D:1756:HIS:ND1	1:C:1863:GLY:O	2.29	0.65
1:B:1638:ASP:OD1	1:B:1647:SER:OG	2.15	0.65
1:A:1084:ARG:NH1	1:C:1073:GLU:OE2	2.30	0.65
1:D:932:ASN:OD1	1:D:933:GLU:N	2.30	0.65
1:B:2069:ILE:HG23	1:B:2104:ILE:HD11	1.78	0.64
1:A:747:SER:O	1:A:897:SER:OG	2.15	0.64
1:B:1047:GLN:O	1:B:1055:ARG:NH2	2.30	0.64
1:B:1907:LEU:O	1:B:1907:LEU:HD23	1.97	0.64
1:B:722:ASN:ND2	1:B:871:GLU:OE1	2.30	0.64
1:A:2172:ASP:OD1	1:A:2174:ASN:N	2.28	0.64
1:D:1692:GLU:OE1	1:D:2190:TYR:N	2.30	0.64
1:D:1276:SER:OG	1:D:1415:ASN:OD1	2.16	0.64

Continued on next page...

Continued from previous page...

Atom-1	Atom-2	Interatomic distance (Å)	Clash overlap (Å)
1:D:2000:ASP:OD1	1:D:2000:ASP:N	2.28	0.64
1:A:1638:ASP:HB3	1:A:1644:LEU:HD12	1.80	0.63
1:D:1638:ASP:OD1	1:D:1647:SER:OG	2.16	0.63
1:B:557:GLU:OE1	1:B:561:ARG:NH2	2.31	0.63
1:B:1730:GLN:NE2	1:B:1736:LEU:O	2.27	0.63
1:B:1907:LEU:O	1:B:1911:ILE:HD13	2.00	0.62
1:A:1998:GLU:OE2	1:A:2001:GLY:N	2.33	0.62
1:B:2179:ASP:OD1	1:B:2180:THR:N	2.33	0.62
1:B:2074:LEU:HD13	1:B:2082:ILE:HD11	1.82	0.62
1:B:1697:THR:HB	1:B:1700:THR:HG22	1.82	0.61
1:C:578:ASP:OD1	1:C:581:SER:OG	2.06	0.61
1:C:1907:LEU:HD23	1:C:1907:LEU:O	2.00	0.61
1:A:1907:LEU:HD23	1:A:1907:LEU:O	2.01	0.61
1:B:1911:ILE:HD12	1:B:1911:ILE:H	1.66	0.61
1:A:1276:SER:OG	1:A:1415:ASN:OD1	2.16	0.61
1:C:1902:GLY:O	1:C:1903:THR:OG1	2.14	0.61
1:D:2172:ASP:OD1	1:D:2174:ASN:N	2.33	0.61
1:C:1818:GLU:OE1	1:C:1818:GLU:N	2.32	0.61
1:A:824:SER:HG	1:A:920:TRP:HE1	1.46	0.61
1:D:1645:GLY:O	1:D:1806:SER:OG	2.13	0.61
1:B:1751:TYR:OH	1:A:1865:LYS:NZ	2.33	0.60
1:B:1603:TYR:C	1:B:1655:ILE:HG22	2.21	0.60
1:B:2096:ARG:NH1	1:B:2165:TRP:O	2.34	0.60
1:A:1697:THR:HB	1:A:1700:THR:HG22	1.84	0.60
1:B:1782:ARG:NH2	1:B:1784:GLU:OE1	2.33	0.60
1:C:2074:LEU:HD13	1:C:2082:ILE:HD11	1.82	0.60
1:D:714:GLU:N	1:D:714:GLU:OE1	2.35	0.60
1:C:2064:ARG:HH22	1:C:2189:ALA:H	1.49	0.60
1:B:1366:SER:N	1:B:1430:ASN:OD1	2.34	0.59
1:B:1849:ASP:OD1	1:B:1850:HIS:ND1	2.35	0.59
1:C:2096:ARG:NH1	1:C:2165:TRP:O	2.35	0.59
1:D:1969:SER:CB	1:D:1985:VAL:HG11	2.33	0.59
1:C:1366:SER:N	1:C:1430:ASN:OD1	2.34	0.59
1:B:1692:GLU:O	1:B:2090:ARG:NH1	2.36	0.59
1:A:2031:GLU:OE1	1:A:2031:GLU:N	2.34	0.59
1:A:1642:ASP:N	1:A:1642:ASP:OD1	2.35	0.59
1:C:1059:ASN:OD1	1:C:1062:GLN:NE2	2.36	0.59
1:D:827:GLU:OE2	1:D:863:ALA:N	2.26	0.58
1:D:2031:GLU:OE1	1:D:2031:GLU:N	2.31	0.58
1:A:1911:ILE:H	1:A:1911:ILE:HD12	1.69	0.58
1:D:736:LEU:HD13	1:D:738:MET:SD	2.43	0.58

Continued on next page...

Continued from previous page...

Atom-1	Atom-2	Interatomic distance (Å)	Clash overlap (Å)
1:C:2179:ASP:OD1	1:C:2180:THR:N	2.37	0.58
1:B:1969:SER:O	1:B:1987:GLN:NE2	2.32	0.58
1:A:1692:GLU:OE1	1:A:2190:TYR:N	2.36	0.58
1:C:1638:ASP:HB3	1:C:1644:LEU:HD12	1.86	0.57
1:D:2008:ARG:N	1:D:2028:GLU:OE2	2.35	0.57
1:C:1999:ILE:O	1:C:2002:VAL:N	2.27	0.57
1:A:696:ALA:O	1:A:699:THR:OG1	2.18	0.57
1:A:1621:ASP:OD1	1:A:1968:HIS:NE2	2.38	0.57
1:C:1697:THR:HB	1:C:1700:THR:HG22	1.87	0.57
1:C:1357:GLY:O	1:C:1359:MET:N	2.37	0.57
1:B:578:ASP:OD1	1:B:581:SER:OG	2.14	0.56
1:A:2084:TYR:HD1	1:A:2177:TYR:HH	1.52	0.56
1:D:622:MET:O	1:D:627:ARG:NH2	2.32	0.56
1:A:1902:GLY:O	1:A:1903:THR:OG1	2.20	0.56
1:A:1998:GLU:HA	1:A:2002:VAL:O	2.06	0.56
1:D:1998:GLU:OE2	1:D:2001:GLY:N	2.39	0.56
1:D:1986:GLN:NE2	1:D:1988:GLU:O	2.38	0.56
1:D:652:LYS:NZ	1:D:714:GLU:OE2	2.30	0.55
1:C:1691:ILE:HG22	1:C:1696:TYR:O	2.06	0.55
1:B:1357:GLY:O	1:B:1359:MET:N	2.37	0.55
1:D:1818:GLU:OE2	1:D:1828:VAL:N	2.34	0.55
1:B:1995:PRO:O	1:B:2006:TYR:N	2.39	0.55
1:B:2064:ARG:HH22	1:B:2189:ALA:H	1.55	0.55
1:A:1911:ILE:HD12	1:A:1911:ILE:N	2.22	0.55
1:D:1642:ASP:OD1	1:D:1642:ASP:N	2.39	0.55
1:D:2120:ASP:OD1	1:D:2121:SER:N	2.40	0.55
1:B:736:LEU:HD13	1:B:738:MET:SD	2.47	0.55
1:C:1847:ASP:O	1:C:2181:LYS:NZ	2.40	0.55
1:D:1865:LYS:NZ	1:C:1751:TYR:OH	2.40	0.55
1:D:2012:ILE:O	1:D:2023:HIS:ND1	2.40	0.55
1:C:747:SER:O	1:C:897:SER:OG	2.25	0.55
1:D:1756:HIS:CE1	1:C:1863:GLY:O	2.60	0.54
1:C:1794:ASN:OD1	1:C:1795:VAL:N	2.40	0.54
1:A:736:LEU:HD13	1:A:738:MET:SD	2.47	0.54
1:B:747:SER:O	1:B:897:SER:OG	2.25	0.54
1:B:932:ASN:OD1	1:B:933:GLU:N	2.40	0.54
1:C:1623:ILE:O	1:C:1816:ARG:NH2	2.40	0.54
1:B:1996:VAL:HG23	1:B:2004:ARG:C	2.28	0.54
1:D:967:LEU:N	1:D:967:LEU:HD22	2.23	0.54
1:C:1998:GLU:OE2	1:C:2001:GLY:N	2.40	0.54
1:B:926:GLU:HB2	1:B:931:THR:HG22	1.89	0.54

Continued on next page...

Continued from previous page...

Atom-1	Atom-2	Interatomic distance (Å)	Clash overlap (Å)
1:A:702:HIS:NE2	1:A:706:GLU:OE2	2.41	0.54
1:A:1623:ILE:O	1:A:1816:ARG:NH2	2.41	0.54
1:D:576:ARG:NH1	1:D:724:ILE:O	2.41	0.54
1:A:1769:SER:HB2	1:A:1947:GLY:HA3	1.90	0.54
1:A:772:ALA:HB1	1:A:777:ASP:OD2	2.08	0.53
1:A:1093:LEU:CD2	1:C:1064:MET:CE	2.86	0.53
1:D:1902:GLY:O	1:D:1903:THR:OG1	2.20	0.53
1:C:1692:GLU:OE1	1:C:2190:TYR:N	2.41	0.53
1:B:1630:ARG:NH2	1:B:1831:GLU:OE2	2.41	0.53
1:B:1599:ILE:HD11	1:B:1952:THR:OG1	2.09	0.53
1:B:1969:SER:HB3	1:B:1985:VAL:HG11	1.91	0.53
1:A:1603:TYR:C	1:A:1655:ILE:HG22	2.29	0.53
1:D:1691:ILE:HG22	1:D:1696:TYR:O	2.08	0.53
1:A:1677:ASP:OD1	1:A:1679:GLN:N	2.35	0.53
1:C:1997:ILE:HD11	1:C:2006:TYR:CE1	2.43	0.53
1:D:1992:TRP:O	1:D:2008:ARG:CZ	2.57	0.53
1:C:1901:HIS:NE2	1:C:2015:PHE:O	2.42	0.53
1:B:926:GLU:HA	1:B:930:THR:O	2.09	0.52
1:A:1901:HIS:NE2	1:A:2015:PHE:O	2.42	0.52
1:B:1065:LEU:HD11	1:B:1097:GLY:HA3	1.90	0.52
1:C:1869:TYR:O	1:C:1870:THR:OG1	2.20	0.52
1:B:1861:ASN:C	1:B:1861:ASN:OD1	2.47	0.52
1:A:1638:ASP:N	1:A:1638:ASP:OD1	2.43	0.52
1:D:1911:ILE:HD12	1:D:1911:ILE:N	2.25	0.52
1:D:664:TYR:HD2	1:D:666:THR:HG1	1.56	0.52
1:C:1769:SER:HB2	1:C:1947:GLY:HA3	1.92	0.52
1:B:2049:VAL:HG13	1:B:2098:ALA:HB2	1.92	0.52
1:A:826:LEU:N	1:A:859:ALA:O	2.41	0.52
1:A:1651:TRP:O	1:A:1828:VAL:HG13	2.09	0.52
1:D:1911:ILE:HD12	1:D:1911:ILE:H	1.74	0.51
1:C:641:GLY:O	1:C:1113:ARG:NE	2.35	0.51
1:A:1928:GLN:H	1:A:1982:PRO:HA	1.76	0.51
1:A:714:GLU:N	1:A:714:GLU:OE1	2.43	0.51
1:A:1686:CYS:O	1:A:1690:THR:N	2.34	0.51
1:A:2142:ASP:OD1	1:A:2144:ASP:N	2.42	0.51
1:C:1861:ASN:OD1	1:C:1861:ASN:C	2.49	0.51
1:B:967:LEU:N	1:B:967:LEU:HD22	2.26	0.51
1:C:764:ILE:HD12	1:C:766:LEU:HD21	1.93	0.51
1:A:967:LEU:N	1:A:967:LEU:HD22	2.25	0.51
1:C:736:LEU:HD13	1:C:738:MET:SD	2.50	0.51
1:B:1638:ASP:HB3	1:B:1644:LEU:HD12	1.93	0.51

Continued on next page...

Continued from previous page...

Atom-1	Atom-2	Interatomic distance (Å)	Clash overlap (Å)
1:B:1876:SER:O	1:B:1879:ARG:N	2.43	0.51
1:A:1998:GLU:HA	1:A:2003:THR:HA	1.91	0.51
1:A:1076:GLU:O	1:A:1080:ARG:HG3	2.11	0.51
1:D:1679:GLN:HG2	1:D:1795:VAL:HG22	1.93	0.51
1:C:1076:GLU:O	1:C:1080:ARG:HG3	2.10	0.51
1:C:1877:GLN:NE2	1:C:2015:PHE:CD2	2.79	0.51
1:A:790:ALA:HA	1:A:947:GLY:O	2.11	0.50
1:B:2085:THR:O	1:B:2089:GLY:N	2.44	0.50
1:C:2185:ILE:HD12	1:C:2185:ILE:O	2.11	0.50
1:B:828:ALA:HB2	1:B:860:LEU:HD11	1.92	0.50
1:B:1911:ILE:HD12	1:B:1911:ILE:N	2.26	0.50
1:A:921:ARG:HD2	1:A:921:ARG:N	2.26	0.50
1:C:2139:PHE:HA	1:C:2145:LEU:HD13	1.93	0.50
1:A:1691:ILE:HG22	1:A:1696:TYR:O	2.11	0.50
1:A:919:GLU:HB3	1:A:921:ARG:CZ	2.41	0.50
1:D:1849:ASP:OD1	1:D:1850:HIS:N	2.44	0.50
1:C:1697:THR:HG23	1:C:2091:GLU:HB2	1.93	0.50
1:C:967:LEU:N	1:C:967:LEU:HD22	2.27	0.50
1:A:1071:ASP:OD2	1:C:1089:LYS:NZ	2.37	0.50
1:D:1076:GLU:O	1:D:1080:ARG:HG3	2.11	0.50
1:C:795:ASN:OD1	1:C:799:VAL:HG11	2.12	0.50
1:C:1762:VAL:HG11	1:C:1775:LEU:HD12	1.94	0.50
1:A:827:GLU:OE2	1:A:863:ALA:N	2.32	0.50
1:D:1609:ILE:O	1:D:1613:TRP:N	2.43	0.50
1:B:1074:LEU:HD23	1:B:1074:LEU:O	2.12	0.49
1:D:1928:GLN:H	1:D:1982:PRO:HA	1.76	0.49
1:D:2132:ASN:ND2	1:D:2167:GLN:OE1	2.45	0.49
1:B:770:ASP:OD1	1:B:771:LYS:N	2.45	0.49
1:A:1999:ILE:HD11	1:A:2006:TYR:OH	2.10	0.49
1:B:2002:VAL:HG11	1:B:2004:ARG:HE	1.77	0.49
1:A:2161:ILE:O	1:A:2165:TRP:N	2.41	0.49
1:D:1905:THR:HG22	1:D:1907:LEU:H	1.77	0.49
1:A:886:LEU:HD22	1:A:956:GLU:HB3	1.95	0.49
1:A:1059:ASN:OD1	1:A:1062:GLN:NE2	2.45	0.49
1:C:1850:HIS:NE2	1:C:2186:SER:OG	2.45	0.49
1:B:2038:SER:HA	1:B:2077:ASN:HA	1.94	0.49
1:C:859:ALA:HA	1:C:912:VAL:O	2.12	0.49
1:A:1873:ASN:OD1	1:A:1875:HIS:N	2.46	0.49
1:D:795:ASN:OD1	1:D:799:VAL:HG11	2.12	0.49
1:D:1892:PRO:CD	1:D:1923:TYR:HD2	2.26	0.49
1:D:1899:GLU:OE2	1:D:1935:ALA:N	2.33	0.49

Continued on next page...

Continued from previous page...

Atom-1	Atom-2	Interatomic distance (Å)	Clash overlap (Å)
1:C:772:ALA:HB1	1:C:777:ASP:OD2	2.12	0.49
1:B:1691:ILE:HG22	1:B:1696:TYR:O	2.12	0.49
1:A:1093:LEU:HD22	1:C:1064:MET:CE	2.43	0.49
1:A:2007:ALA:O	1:A:2009:ILE:HD12	2.12	0.49
1:D:1782:ARG:CD	1:C:1778:HIS:CE1	2.96	0.49
1:C:921:ARG:HD2	1:C:921:ARG:N	2.28	0.49
1:C:1830:GLY:N	1:C:1941:HIS:O	2.45	0.49
1:C:2118:GLU:OE1	1:C:2120:ASP:N	2.46	0.48
1:D:1751:TYR:OH	1:C:1865:LYS:NZ	2.43	0.48
1:D:1998:GLU:HA	1:D:2003:THR:HA	1.93	0.48
1:B:795:ASN:OD1	1:B:799:VAL:HG11	2.13	0.48
1:C:1911:ILE:HD12	1:C:1911:ILE:H	1.79	0.48
1:D:1998:GLU:OE2	1:D:2001:GLY:C	2.52	0.48
1:C:1986:GLN:NE2	1:C:1988:GLU:O	2.42	0.48
1:B:2134:GLU:OE1	1:B:2134:GLU:N	2.38	0.48
1:A:1065:LEU:HD11	1:A:1097:GLY:HA3	1.96	0.48
1:A:1596:ILE:HG12	1:A:1838:LEU:HD23	1.94	0.48
1:A:1766:CYS:HA	1:A:1943:GLU:O	2.14	0.48
1:D:1969:SER:HB3	1:D:1985:VAL:HG11	1.96	0.48
1:B:1651:TRP:O	1:B:1828:VAL:HG13	2.14	0.48
1:B:1969:SER:CB	1:B:1985:VAL:HG11	2.43	0.48
1:D:1638:ASP:HB3	1:D:1644:LEU:HD12	1.96	0.48
1:D:1907:LEU:O	1:D:1907:LEU:HD23	2.13	0.48
1:A:825:TYR:HA	1:A:859:ALA:O	2.12	0.48
1:D:1074:LEU:O	1:D:1074:LEU:HD23	2.14	0.48
1:D:1794:ASN:OD1	1:D:1795:VAL:N	2.47	0.48
1:C:1861:ASN:OD1	1:C:1862:HIS:N	2.47	0.47
1:B:1638:ASP:OD1	1:B:1638:ASP:N	2.47	0.47
1:B:1891:HIS:ND1	1:B:1893:ARG:HB3	2.29	0.47
1:C:1969:SER:O	1:C:1987:GLN:NE2	2.47	0.47
1:A:1061:ASN:O	1:A:1065:LEU:HG	2.15	0.47
1:A:909:THR:CG2	1:A:910:PRO:HD2	2.44	0.47
1:D:1789:ILE:HG22	1:D:1789:ILE:O	2.14	0.47
1:A:926:GLU:HB2	1:A:931:THR:HG22	1.97	0.47
1:B:1642:ASP:OD1	1:B:1642:ASP:N	2.47	0.47
1:B:1873:ASN:OD1	1:B:1875:HIS:N	2.47	0.47
1:B:2136:MET:SD	1:B:2169:LEU:N	2.88	0.47
1:A:2120:ASP:OD1	1:A:2121:SER:N	2.47	0.47
1:C:1094:TRP:HB2	1:C:1100:ILE:HD12	1.95	0.47
1:C:1992:TRP:CZ2	1:C:2008:ARG:HB3	2.50	0.47
1:A:541:ALA:N	1:A:767:LYS:O	2.43	0.47

Continued on next page...

Continued from previous page...

Atom-1	Atom-2	Interatomic distance (Å)	Clash overlap (Å)
1:A:1074:LEU:O	1:A:1074:LEU:HD23	2.14	0.47
1:D:772:ALA:HB1	1:D:777:ASP:OD2	2.14	0.47
1:C:585:GLU:N	1:C:585:GLU:OE1	2.48	0.47
1:C:1892:PRO:CD	1:C:1923:TYR:HD2	2.28	0.47
1:B:772:ALA:O	1:B:777:ASP:OD1	2.33	0.47
1:B:1778:HIS:CE1	1:A:1782:ARG:CD	2.98	0.47
1:C:1849:ASP:OD1	1:C:1850:HIS:ND1	2.48	0.47
1:B:827:GLU:OE2	1:B:863:ALA:N	2.33	0.46
1:B:885:GLN:HB3	1:B:920:TRP:CZ3	2.50	0.46
1:A:922:ARG:HE	1:A:936:ARG:NH2	2.14	0.46
1:A:1966:SER:OG	1:A:1967:LEU:N	2.48	0.46
1:B:653:VAL:HB	1:B:683:PHE:CD1	2.50	0.46
1:B:746:LYS:HE3	1:B:750:ASP:O	2.16	0.46
1:B:1059:ASN:OD1	1:B:1062:GLN:NE2	2.48	0.46
1:D:1626:ILE:HD12	1:D:1633:HIS:CE1	2.51	0.46
1:B:1966:SER:OG	1:B:1967:LEU:N	2.47	0.46
1:D:1836:VAL:HG13	1:D:1836:VAL:O	2.16	0.46
1:D:2100:ILE:O	1:D:2110:LYS:NZ	2.40	0.46
1:A:1850:HIS:HE2	1:A:1852:TYR:HE2	1.62	0.46
1:A:1905:THR:HG22	1:A:1907:LEU:H	1.80	0.46
1:B:909:THR:CG2	1:B:910:PRO:HD2	2.45	0.46
1:B:1056:GLY:HA3	1:B:1095:VAL:HG12	1.97	0.46
1:B:1849:ASP:OD1	1:B:1850:HIS:N	2.48	0.46
1:B:2139:PHE:HA	1:B:2145:LEU:HD13	1.98	0.46
1:D:921:ARG:N	1:D:921:ARG:HD2	2.30	0.46
1:C:858:CYS:O	1:C:911:PHE:HA	2.16	0.46
1:C:1068:LEU:HD12	1:C:1069:THR:N	2.31	0.46
1:C:1074:LEU:HD23	1:C:1074:LEU:O	2.15	0.46
1:D:1813:SER:OG	1:D:1814:LYS:N	2.46	0.46
1:D:891:LEU:O	1:D:917:LEU:HD12	2.16	0.46
1:D:919:GLU:HB3	1:D:921:ARG:CZ	2.46	0.46
1:C:909:THR:CG2	1:C:910:PRO:HD2	2.46	0.46
1:C:1122:ALA:HB1	1:C:1124:GLU:OE2	2.15	0.46
1:B:638:GLU:O	1:B:1019:ARG:NH1	2.49	0.46
1:B:859:ALA:HA	1:B:912:VAL:O	2.16	0.46
1:B:2185:ILE:HD12	1:B:2185:ILE:O	2.16	0.46
1:C:1862:HIS:CD2	1:C:1863:GLY:N	2.84	0.46
1:A:1058:VAL:HG22	1:A:1097:GLY:HA2	1.98	0.46
1:A:2048:ILE:HD12	1:A:2048:ILE:N	2.30	0.46
1:D:984:ALA:HA	1:D:1024:GLU:HG2	1.98	0.46
1:D:1404:LYS:HA	1:D:1423:PHE:O	2.16	0.46

Continued on next page...

Continued from previous page...

Atom-1	Atom-2	Interatomic distance (Å)	Clash overlap (Å)
1:C:828:ALA:HB2	1:C:860:LEU:HD11	1.98	0.46
1:B:2002:VAL:CG1	1:B:2004:ARG:HE	2.29	0.45
1:A:1638:ASP:CB	1:A:1644:LEU:HD12	2.45	0.45
1:D:909:THR:CG2	1:D:910:PRO:HD2	2.46	0.45
1:C:543:ILE:CG2	1:C:777:ASP:OD2	2.65	0.45
1:B:925:VAL:HG12	1:B:927:ILE:HG13	1.99	0.45
1:B:1862:HIS:NE2	1:B:2019:GLY:HA3	2.31	0.45
1:A:980:SER:HA	1:A:1024:GLU:O	2.16	0.45
1:A:1404:LYS:HA	1:A:1423:PHE:O	2.17	0.45
1:C:1995:PRO:CG	1:C:2007:ALA:O	2.65	0.45
1:B:1996:VAL:HA	1:B:2005:GLU:HA	1.99	0.45
1:B:2048:ILE:N	1:B:2048:ILE:HD12	2.31	0.45
1:A:1613:TRP:CE3	1:A:1956:LEU:HB3	2.50	0.45
1:A:1817:CYS:SG	1:A:1968:HIS:NE2	2.90	0.45
1:D:2048:ILE:HD12	1:D:2048:ILE:N	2.31	0.45
1:C:909:THR:HG22	1:C:910:PRO:HD2	1.97	0.45
1:A:543:ILE:CG2	1:A:777:ASP:OD2	2.65	0.45
1:D:1885:PHE:O	1:D:1889:GLY:N	2.49	0.45
1:C:1999:ILE:O	1:C:1999:ILE:HG13	2.17	0.45
1:B:981:ALA:HB2	1:B:990:ILE:HD12	1.99	0.45
1:B:1645:GLY:O	1:B:1806:SER:OG	2.17	0.45
1:B:1899:GLU:HG3	1:B:1933:GLY:O	2.17	0.45
1:B:2047:VAL:HG13	1:B:2162:LEU:HD11	1.99	0.45
1:D:827:GLU:OE2	1:D:862:SER:HA	2.16	0.45
1:C:2048:ILE:N	1:C:2048:ILE:HD12	2.31	0.45
1:B:1794:ASN:OD1	1:B:1795:VAL:N	2.49	0.45
1:A:1753:CYS:HB3	1:A:1755:PHE:CE1	2.52	0.45
1:C:1596:ILE:HG23	1:C:1836:VAL:CG2	2.47	0.45
1:A:2101:VAL:HG12	1:A:2102:LYS:N	2.32	0.45
1:D:1720:GLU:OE1	1:D:1740:GLY:HA2	2.15	0.45
1:A:1068:LEU:HD12	1:A:1069:THR:N	2.32	0.45
1:C:692:THR:HG21	1:C:699:THR:HG21	1.99	0.45
1:A:1093:LEU:HD22	1:C:1064:MET:HE3	1.99	0.45
1:D:1721:GLU:OE2	1:D:1797:ILE:N	2.35	0.45
1:D:1899:GLU:HG3	1:D:1934:SER:HA	1.98	0.45
1:B:857:PHE:CE2	1:B:910:PRO:HB3	2.52	0.44
1:B:898:ARG:NH2	1:B:915:GLN:O	2.51	0.44
1:B:1770:LEU:HG	1:B:2024:LEU:HD11	1.99	0.44
1:B:2101:VAL:HG12	1:B:2102:LYS:N	2.32	0.44
1:A:1656:ASP:OD1	1:A:1656:ASP:N	2.51	0.44
1:A:1860:ILE:HG22	1:A:2022:ALA:CB	2.47	0.44

Continued on next page...

Continued from previous page...

Atom-1	Atom-2	Interatomic distance (Å)	Clash overlap (Å)
1:C:1997:ILE:HD12	1:C:1999:ILE:CG2	2.46	0.44
1:C:2134:GLU:OE1	1:C:2134:GLU:N	2.41	0.44
1:B:1873:ASN:OD1	1:B:1873:ASN:C	2.55	0.44
1:A:2132:ASN:N	1:A:2132:ASN:OD1	2.50	0.44
1:D:858:CYS:O	1:D:911:PHE:HA	2.17	0.44
1:C:1061:ASN:O	1:C:1065:LEU:HG	2.16	0.44
1:B:825:TYR:OH	1:B:827:GLU:OE1	2.29	0.44
1:B:1850:HIS:CE1	1:B:2186:SER:HG	2.34	0.44
1:D:980:SER:HA	1:D:1024:GLU:O	2.17	0.44
1:C:1058:VAL:HG22	1:C:1097:GLY:HA2	2.00	0.44
1:A:1297:TYR:CZ	1:A:1312:ARG:HA	2.53	0.44
1:D:1063:GLU:OE1	1:D:1063:GLU:HA	2.18	0.44
1:C:932:ASN:OD1	1:C:933:GLU:N	2.50	0.44
1:B:1063:GLU:OE1	1:B:1063:GLU:HA	2.18	0.44
1:D:772:ALA:O	1:D:777:ASP:OD1	2.35	0.44
1:D:1128:THR:HG22	1:D:1129:HIS:H	1.82	0.44
1:D:1998:GLU:CG	1:D:2003:THR:OG1	2.66	0.44
1:D:2102:LYS:N	1:D:2106:GLU:OE1	2.41	0.44
1:D:764:ILE:HD12	1:D:766:LEU:HD21	1.98	0.44
1:D:1638:ASP:OD1	1:D:1638:ASP:N	2.51	0.44
1:B:919:GLU:HG3	1:B:921:ARG:HD2	1.99	0.44
1:B:1076:GLU:O	1:B:1080:ARG:HG3	2.18	0.44
1:B:1404:LYS:HA	1:B:1423:PHE:O	2.17	0.44
1:B:2046:ALA:N	1:B:2101:VAL:O	2.46	0.44
1:A:1093:LEU:CD2	1:C:1064:MET:HE3	2.48	0.44
1:A:2059:ARG:CZ	1:A:2115:LEU:HD23	2.47	0.44
1:D:747:SER:O	1:D:897:SER:OG	2.35	0.44
1:D:1610:HIS:O	1:D:1613:TRP:HB3	2.18	0.44
1:D:1769:SER:HB2	1:D:1947:GLY:HA3	2.00	0.44
1:C:1404:LYS:HA	1:C:1423:PHE:O	2.17	0.44
1:B:626:GLU:OE2	1:B:676:ARG:HB2	2.17	0.44
1:A:1212:LYS:HG3	1:A:1265:SER:HB2	2.00	0.44
1:A:1626:ILE:HD12	1:A:1633:HIS:CE1	2.53	0.44
1:A:1645:GLY:O	1:A:1806:SER:OG	2.23	0.44
1:D:2097:PHE:CZ	1:D:2099:VAL:HG13	2.53	0.44
1:C:1964:VAL:CG2	1:C:1965:PRO:HD2	2.48	0.44
1:A:2179:ASP:OD1	1:A:2180:THR:HG23	2.18	0.44
1:A:1063:GLU:OE1	1:A:1063:GLU:HA	2.17	0.43
1:D:1873:ASN:OD1	1:D:1873:ASN:C	2.56	0.43
1:C:1849:ASP:OD1	1:C:1850:HIS:N	2.51	0.43
1:B:1068:LEU:HD12	1:B:1069:THR:N	2.32	0.43

Continued on next page...

Continued from previous page...

Atom-1	Atom-2	Interatomic distance (Å)	Clash overlap (Å)
1:B:1122:ALA:HB1	1:B:1124:GLU:OE2	2.18	0.43
1:D:770:ASP:OD1	1:D:771:LYS:N	2.50	0.43
1:C:2101:VAL:HG12	1:C:2102:LYS:N	2.33	0.43
1:C:2142:ASP:OD1	1:C:2144:ASP:N	2.51	0.43
1:C:981:ALA:HB2	1:C:990:ILE:HD12	2.00	0.43
1:C:1063:GLU:HA	1:C:1063:GLU:OE1	2.18	0.43
1:B:696:ALA:O	1:B:699:THR:OG1	2.35	0.43
1:C:2035:ARG:O	1:C:2036:PRO:C	2.57	0.43
1:B:1240:GLU:HG2	1:B:1267:VAL:HG12	2.01	0.43
1:D:543:ILE:CG2	1:D:777:ASP:OD2	2.66	0.43
1:C:980:SER:HA	1:C:1024:GLU:O	2.19	0.43
1:C:1240:GLU:HG2	1:C:1267:VAL:HG12	2.00	0.43
1:D:1768:SER:HA	1:D:1771:THR:OG1	2.18	0.43
1:B:543:ILE:CG2	1:B:777:ASP:OD2	2.67	0.43
1:B:576:ARG:NH1	1:B:724:ILE:O	2.51	0.43
1:A:2129:VAL:HG12	1:A:2129:VAL:O	2.18	0.43
1:D:1297:TYR:CZ	1:D:1312:ARG:HA	2.53	0.43
1:C:1984:VAL:O	1:C:1984:VAL:HG13	2.18	0.43
1:C:1997:ILE:HD11	1:C:2006:TYR:HE1	1.84	0.43
1:B:557:GLU:O	1:B:561:ARG:HG2	2.18	0.43
1:D:1999:ILE:HD11	1:D:2006:TYR:OH	2.19	0.43
1:C:1892:PRO:HD3	1:C:1923:TYR:HD2	1.83	0.43
1:B:827:GLU:OE2	1:B:862:SER:HA	2.18	0.43
1:A:2074:LEU:HD13	1:A:2082:ILE:HD11	2.01	0.43
1:D:1059:ASN:OD1	1:D:1062:GLN:NE2	2.51	0.43
1:B:1068:LEU:HD13	1:B:1074:LEU:HD13	2.01	0.43
1:A:2101:VAL:CG1	1:A:2102:LYS:N	2.81	0.43
1:D:604:MET:HG3	1:D:723:LEU:CD1	2.48	0.43
1:C:1632:ASP:OD2	1:C:1634:SER:N	2.43	0.43
1:B:548:ARG:NH1	1:B:628:LEU:HD22	2.33	0.42
1:B:1778:HIS:CE1	1:A:1782:ARG:HD2	2.53	0.42
1:D:541:ALA:N	1:D:767:LYS:O	2.47	0.42
1:D:1651:TRP:O	1:D:1828:VAL:HG13	2.18	0.42
1:C:1612:PHE:CZ	1:C:1616:LEU:HD11	2.53	0.42
1:B:1048:GLU:O	1:B:1055:ARG:NH1	2.52	0.42
1:A:981:ALA:HB2	1:A:990:ILE:HD12	2.01	0.42
1:A:1358:LEU:HD11	1:A:1390:ILE:HG22	2.01	0.42
1:A:1892:PRO:CD	1:A:1923:TYR:HD2	2.32	0.42
1:D:1068:LEU:HD12	1:D:1069:THR:N	2.34	0.42
1:D:2139:PHE:HA	1:D:2145:LEU:HD13	2.00	0.42
1:C:1249:SER:OG	1:C:1257:THR:HG22	2.19	0.42

Continued on next page...

Continued from previous page...

Atom-1	Atom-2	Interatomic distance (Å)	Clash overlap (Å)
1:C:2185:ILE:HD13	1:C:2187:LEU:HD21	2.00	0.42
1:B:1276:SER:OG	1:B:1415:ASN:OD1	2.31	0.42
1:A:1071:ASP:HB2	1:C:1089:LYS:NZ	2.34	0.42
1:C:1880:VAL:HG13	1:C:1881:ILE:N	2.34	0.42
1:A:2099:VAL:HG12	1:A:2124:LEU:HG	2.02	0.42
1:D:1893:ARG:NH2	1:D:1926:GLU:OE1	2.52	0.42
1:C:1697:THR:HG22	1:C:1698:ARG:N	2.35	0.42
1:C:1860:ILE:HG22	1:C:2022:ALA:CB	2.49	0.42
1:A:1860:ILE:HG22	1:A:2022:ALA:HB2	2.00	0.42
1:A:1890:ILE:HG13	1:A:2025:VAL:HG11	2.02	0.42
1:A:1996:VAL:HG13	1:A:1996:VAL:O	2.18	0.42
1:D:1370:PRO:HA	1:D:1425:THR:HG22	2.02	0.42
1:C:779:ILE:HB	1:C:957:TYR:CD2	2.55	0.42
1:C:1875:HIS:O	1:C:1878:SER:HB2	2.19	0.42
1:C:1951:LEU:CD1	1:C:2026:ILE:HD11	2.50	0.42
1:C:2037:PRO:O	1:C:2038:SER:CB	2.67	0.42
1:B:622:MET:O	1:B:627:ARG:NH2	2.42	0.42
1:B:2012:ILE:C	1:B:2023:HIS:ND1	2.73	0.42
1:D:879:VAL:O	1:D:883:LEU:HG	2.19	0.42
1:D:1935:ALA:HB2	1:D:1953:LYS:CD	2.49	0.42
1:C:1638:ASP:OD1	1:C:1638:ASP:N	2.53	0.42
1:C:1873:ASN:OD1	1:C:1875:HIS:N	2.51	0.42
1:B:573:PRO:HD3	1:B:600:PHE:CD2	2.53	0.42
1:B:1609:ILE:O	1:B:1612:PHE:HB3	2.20	0.42
1:B:1648:TYR:CE1	1:B:1813:SER:HA	2.54	0.42
1:A:891:LEU:O	1:A:917:LEU:HD12	2.19	0.42
1:A:2113:TYR:CE1	1:A:2121:SER:OG	2.70	0.42
1:D:1212:LYS:HG3	1:D:1265:SER:HB2	2.00	0.42
1:D:2135:THR:O	1:D:2138:VAL:HG12	2.20	0.42
1:C:1892:PRO:HB3	1:C:1920:PHE:CZ	2.54	0.42
1:B:1866:THR:O	1:B:1868:GLY:N	2.51	0.42
1:B:1963:LEU:HD21	1:B:1992:TRP:CG	2.55	0.42
1:A:1067:ILE:HG22	1:A:1067:ILE:O	2.20	0.42
1:B:1649:SER:OG	1:B:1650:LYS:N	2.52	0.42
1:B:1880:VAL:HG13	1:B:1881:ILE:N	2.34	0.42
1:A:582:PHE:CD1	1:A:731:MET:CE	3.03	0.42
1:A:1762:VAL:HG11	1:A:1775:LEU:HD12	2.02	0.42
1:A:1986:GLN:NE2	1:A:1988:GLU:O	2.40	0.42
1:C:1638:ASP:CB	1:C:1644:LEU:HD12	2.50	0.42
1:B:1718:MET:SD	1:B:1943:GLU:HB3	2.60	0.42
1:A:559:TRP:CZ2	1:A:888:HIS:CG	3.08	0.42

Continued on next page...

Continued from previous page...

Atom-1	Atom-2	Interatomic distance (Å)	Clash overlap (Å)
1:D:1358:LEU:HD11	1:D:1390:ILE:HG22	2.02	0.42
1:C:1892:PRO:HB3	1:C:1920:PHE:CE2	2.55	0.42
1:C:2132:ASN:OD1	1:C:2132:ASN:N	2.53	0.42
1:C:2157:LYS:CE	1:C:2157:LYS:HA	2.50	0.42
1:B:1808:GLY:HA3	1:B:1810:PHE:CE2	2.56	0.41
1:B:2002:VAL:HG11	1:B:2004:ARG:NE	2.35	0.41
1:A:2064:ARG:NH1	1:A:2189:ALA:O	2.49	0.41
1:C:770:ASP:OD1	1:C:771:LYS:N	2.52	0.41
1:C:1626:ILE:HD12	1:C:1633:HIS:CE1	2.55	0.41
1:C:1992:TRP:O	1:C:2008:ARG:CZ	2.67	0.41
1:B:692:THR:HG22	1:B:948:SER:CB	2.50	0.41
1:B:940:ILE:O	1:B:951:HIS:ND1	2.53	0.41
1:B:2118:GLU:OE1	1:B:2120:ASP:N	2.52	0.41
1:C:1067:ILE:HG22	1:C:1067:ILE:O	2.20	0.41
1:C:1692:GLU:O	1:C:2090:ARG:NH1	2.52	0.41
1:C:1813:SER:OG	1:C:1814:LYS:N	2.53	0.41
1:B:595:THR:HG22	1:B:741:PRO:HA	2.02	0.41
1:B:969:ILE:HD12	1:B:975:ALA:HB2	2.02	0.41
1:B:1249:SER:OG	1:B:1257:THR:HG22	2.19	0.41
1:B:1655:ILE:N	1:B:1831:GLU:OE1	2.45	0.41
1:B:1703:LYS:O	1:B:1703:LYS:HG2	2.21	0.41
1:A:879:VAL:O	1:A:883:LEU:HG	2.19	0.41
1:A:1893:ARG:NH1	1:A:1929:PHE:CG	2.88	0.41
1:D:2101:VAL:CG1	1:D:2102:LYS:N	2.83	0.41
1:B:1769:SER:HB2	1:B:1947:GLY:HA3	2.03	0.41
1:B:1892:PRO:CD	1:B:1923:TYR:HD2	2.33	0.41
1:B:2157:LYS:HA	1:B:2157:LYS:CE	2.50	0.41
1:A:1794:ASN:OD1	1:A:1794:ASN:C	2.58	0.41
1:C:1844:ALA:O	1:C:1848:GLY:N	2.53	0.41
1:C:1875:HIS:HB3	1:C:1879:ARG:NH1	2.35	0.41
1:D:1677:ASP:OD2	1:D:1722:TYR:HB3	2.19	0.41
1:D:2133:LYS:O	1:D:2137:ASP:HB2	2.20	0.41
1:C:587:LYS:HE3	1:C:741:PRO:HG3	2.02	0.41
1:C:1349:ASP:O	1:C:1353:GLN:HG3	2.21	0.41
1:B:604:MET:HG3	1:B:723:LEU:CD1	2.51	0.41
1:B:1688:TYR:CE2	1:B:1692:GLU:OE2	2.74	0.41
1:A:909:THR:HG22	1:A:910:PRO:HD2	2.01	0.41
1:A:1349:ASP:O	1:A:1353:GLN:HG3	2.21	0.41
1:D:1067:ILE:O	1:D:1067:ILE:HG22	2.21	0.41
1:D:2101:VAL:HG12	1:D:2102:LYS:N	2.35	0.41
1:C:1648:TYR:CE1	1:C:1813:SER:HA	2.56	0.41

Continued on next page...

Continued from previous page...

Atom-1	Atom-2	Interatomic distance (Å)	Clash overlap (Å)
1:C:1905:THR:HG22	1:C:1907:LEU:H	1.86	0.41
1:B:579:TRP:HB2	1:B:593:MET:CE	2.51	0.41
1:B:1349:ASP:O	1:B:1353:GLN:HG3	2.21	0.41
1:A:772:ALA:O	1:A:777:ASP:OD1	2.38	0.41
1:A:1921:GLN:HA	1:A:1924:THR:O	2.21	0.41
1:D:1410:CYS:HA	1:D:1415:ASN:O	2.21	0.41
1:A:915:GLN:HA	1:A:915:GLN:OE1	2.20	0.41
1:A:1370:PRO:HA	1:A:1425:THR:HG22	2.02	0.41
1:A:1604:PRO:N	1:A:1655:ILE:HG22	2.35	0.41
1:A:1830:GLY:N	1:A:1941:HIS:O	2.43	0.41
1:A:1862:HIS:CD2	1:A:1863:GLY:N	2.88	0.41
1:C:795:ASN:OD1	1:C:795:ASN:N	2.53	0.41
1:C:2151:THR:O	1:C:2155:LYS:HG3	2.20	0.41
1:B:1645:GLY:O	1:B:1806:SER:CB	2.69	0.41
1:B:1996:VAL:HA	1:B:2004:ARG:O	2.20	0.41
1:A:692:THR:HG22	1:A:948:SER:CB	2.50	0.41
1:A:795:ASN:OD1	1:A:799:VAL:HG11	2.20	0.41
1:A:828:ALA:HB2	1:A:860:LEU:HD11	2.02	0.41
1:A:2026:ILE:HG22	1:A:2027:GLU:N	2.36	0.41
1:D:987:LEU:HD21	1:D:1026:ILE:HG23	2.03	0.41
1:D:1405:PHE:CE2	1:D:1425:THR:HG21	2.56	0.41
1:D:1645:GLY:O	1:D:1806:SER:CB	2.68	0.41
1:C:705:LEU:HB3	1:C:709:TYR:CZ	2.56	0.41
1:C:919:GLU:HB3	1:C:921:ARG:CZ	2.51	0.41
1:C:1768:SER:O	1:C:1771:THR:OG1	2.30	0.41
1:C:1902:GLY:C	1:C:1903:THR:HG1	2.16	0.41
1:D:1074:LEU:HD23	1:D:1078:ILE:HD13	2.02	0.41
1:D:1721:GLU:OE2	1:D:1796:SER:HA	2.21	0.41
1:C:1811:ALA:O	1:C:1826:GLY:HA3	2.20	0.41
1:B:1058:VAL:HG22	1:B:1097:GLY:HA2	2.02	0.40
1:B:1902:GLY:O	1:B:1903:THR:OG1	2.26	0.40
1:B:2110:LYS:O	1:B:2113:TYR:HB3	2.21	0.40
1:B:2185:ILE:HD13	1:B:2187:LEU:HD21	2.03	0.40
1:A:921:ARG:N	1:A:921:ARG:CD	2.84	0.40
1:A:1122:ALA:HB1	1:A:1124:GLU:OE2	2.20	0.40
1:D:886:LEU:HD22	1:D:956:GLU:HB3	2.02	0.40
1:D:1349:ASP:O	1:D:1353:GLN:HG3	2.21	0.40
1:B:1648:TYR:CD1	1:B:1813:SER:HA	2.56	0.40
1:B:1836:VAL:O	1:B:1836:VAL:HG13	2.21	0.40
1:A:920:TRP:CZ2	1:A:936:ARG:HB3	2.57	0.40
1:A:1369:LEU:HD12	1:A:1428:ILE:HD13	2.03	0.40

Continued on next page...

Continued from previous page...

Atom-1	Atom-2	Interatomic distance (Å)	Clash overlap (Å)
1:A:1410:CYS:HA	1:A:1415:ASN:O	2.21	0.40
1:A:1907:LEU:O	1:A:1911:ILE:HD13	2.21	0.40
1:C:638:GLU:OE1	1:C:1118:THR:HB	2.21	0.40
1:C:1410:CYS:HA	1:C:1415:ASN:O	2.21	0.40
1:C:1827:TYR:HB3	1:C:1903:THR:O	2.21	0.40
1:C:1901:HIS:O	1:C:1903:THR:HG23	2.21	0.40
1:B:921:ARG:HD2	1:B:921:ARG:N	2.37	0.40
1:B:1067:ILE:O	1:B:1067:ILE:HG22	2.21	0.40
1:B:1206:LEU:N	1:B:1206:LEU:HD12	2.37	0.40
1:B:1727:SER:HA	1:B:1730:GLN:OE1	2.21	0.40
1:D:1369:LEU:HD12	1:D:1428:ILE:HD13	2.03	0.40
1:D:1729:GLU:O	1:D:1733:GLY:N	2.52	0.40
1:D:1767:SER:HA	1:D:2014:SER:OG	2.22	0.40
1:D:1935:ALA:HB2	1:D:1953:LYS:HD2	2.03	0.40
1:B:829:HIS:CD2	1:B:831:THR:HG23	2.56	0.40
1:A:1789:ILE:O	1:A:1789:ILE:HG22	2.22	0.40
1:D:696:ALA:O	1:D:699:THR:OG1	2.37	0.40
1:D:746:LYS:HE3	1:D:750:ASP:O	2.22	0.40
1:D:1880:VAL:HG13	1:D:1881:ILE:N	2.36	0.40
1:C:746:LYS:HE3	1:C:750:ASP:O	2.21	0.40
1:C:1768:SER:HA	1:C:1771:THR:OG1	2.21	0.40
1:C:2064:ARG:NH1	1:C:2188:PRO:HB2	2.37	0.40
1:B:2101:VAL:CG1	1:B:2102:LYS:N	2.85	0.40
1:A:1405:PHE:CE2	1:A:1425:THR:HG21	2.56	0.40
1:D:722:ASN:C	1:D:723:LEU:HD23	2.42	0.40
1:D:1863:GLY:HA2	1:D:1876:SER:HB3	2.04	0.40
1:D:1966:SER:OG	1:D:1967:LEU:N	2.55	0.40

There are no symmetry-related clashes.

5.3 Torsion angles ⓘ

5.3.1 Protein backbone ⓘ

In the following table, the Percentiles column shows the percent Ramachandran outliers of the chain as a percentile score with respect to all PDB entries followed by that with respect to all EM entries.

The Analysed column shows the number of residues for which the backbone conformation was analysed, and the total number of residues.

Mol	Chain	Analysed	Favoured	Allowed	Outliers	Percentiles	
1	A	1472/1690 (87%)	1402 (95%)	70 (5%)	0	100	100
1	B	1464/1690 (87%)	1386 (95%)	77 (5%)	1 (0%)	51	86
1	C	1464/1690 (87%)	1392 (95%)	70 (5%)	2 (0%)	51	86
1	D	1472/1690 (87%)	1407 (96%)	65 (4%)	0	100	100
All	All	5872/6760 (87%)	5587 (95%)	282 (5%)	3 (0%)	54	86

All (3) Ramachandran outliers are listed below:

Mol	Chain	Res	Type
1	B	1358	LEU
1	C	1358	LEU
1	C	2038	SER

5.3.2 Protein sidechains ⓘ

In the following table, the Percentiles column shows the percent sidechain outliers of the chain as a percentile score with respect to all PDB entries followed by that with respect to all EM entries.

The Analysed column shows the number of residues for which the sidechain conformation was analysed, and the total number of residues.

Mol	Chain	Analysed	Rotameric	Outliers	Percentiles	
1	A	1231/1413 (87%)	1215 (99%)	16 (1%)	69	82
1	B	1228/1413 (87%)	1214 (99%)	14 (1%)	73	84
1	C	1228/1413 (87%)	1215 (99%)	13 (1%)	73	84
1	D	1231/1413 (87%)	1216 (99%)	15 (1%)	71	83
All	All	4918/5652 (87%)	4860 (99%)	58 (1%)	72	83

All (58) residues with a non-rotameric sidechain are listed below:

Mol	Chain	Res	Type
1	B	585	GLU
1	B	643	THR
1	B	723	LEU
1	B	736	LEU
1	B	916	GLU
1	B	921	ARG
1	B	1055	ARG
1	B	1128	THR

Continued on next page...

Continued from previous page...

Mol	Chain	Res	Type
1	B	1671	ARG
1	B	1934	SER
1	B	2031	GLU
1	B	2035	ARG
1	B	2113	TYR
1	B	2181	LYS
1	A	643	THR
1	A	723	LEU
1	A	736	LEU
1	A	921	ARG
1	A	1055	ARG
1	A	1128	THR
1	A	1218	GLN
1	A	1648	TYR
1	A	1649	SER
1	A	1671	ARG
1	A	1756	HIS
1	A	1786	GLU
1	A	2066	LEU
1	A	2130	LYS
1	A	2132	ASN
1	A	2177	TYR
1	D	585	GLU
1	D	643	THR
1	D	723	LEU
1	D	736	LEU
1	D	921	ARG
1	D	1055	ARG
1	D	1128	THR
1	D	1218	GLN
1	D	1671	ARG
1	D	1998	GLU
1	D	2000	ASP
1	D	2066	LEU
1	D	2113	TYR
1	D	2130	LYS
1	D	2177	TYR
1	C	585	GLU
1	C	643	THR
1	C	723	LEU
1	C	736	LEU
1	C	921	ARG

Continued on next page...

Continued from previous page...

Mol	Chain	Res	Type
1	C	1055	ARG
1	C	1128	THR
1	C	1632	ASP
1	C	1671	ARG
1	C	2000	ASP
1	C	2035	ARG
1	C	2132	ASN
1	C	2181	LYS

Sometimes sidechains can be flipped to improve hydrogen bonding and reduce clashes. All (16) such sidechains are listed below:

Mol	Chain	Res	Type
1	B	682	ASN
1	B	729	HIS
1	B	853	GLN
1	B	856	GLN
1	B	896	HIS
1	A	729	HIS
1	A	856	GLN
1	A	1800	ASN
1	D	729	HIS
1	D	856	GLN
1	C	729	HIS
1	C	856	GLN
1	C	896	HIS
1	C	1778	HIS
1	C	1941	HIS
1	C	1968	HIS

5.3.3 RNA ⓘ

There are no RNA molecules in this entry.

5.4 Non-standard residues in protein, DNA, RNA chains ⓘ

There are no non-standard protein/DNA/RNA residues in this entry.

5.5 Carbohydrates ⓘ

There are no monosaccharides in this entry.

5.6 Ligand geometry

There are no ligands in this entry.

5.7 Other polymers

There are no such residues in this entry.

5.8 Polymer linkage issues

There are no chain breaks in this entry.

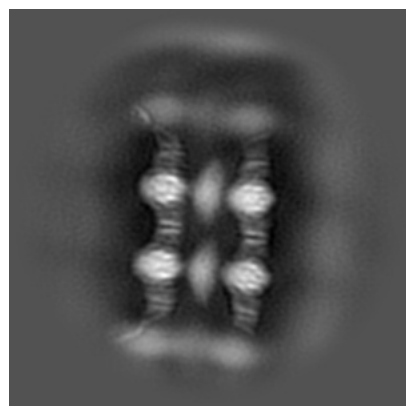
6 Map visualisation [i](#)

This section contains visualisations of the EMDB entry EMD-14945. These allow visual inspection of the internal detail of the map and identification of artifacts.

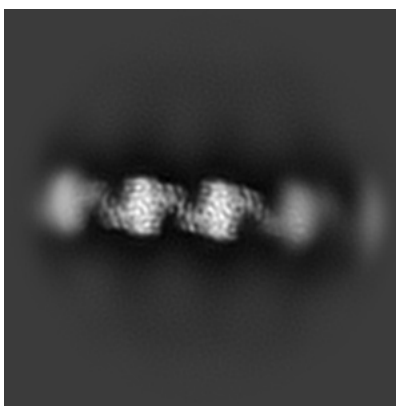
Images derived from a raw map, generated by summing the deposited half-maps, are presented below the corresponding image components of the primary map to allow further visual inspection and comparison with those of the primary map.

6.1 Orthogonal projections [i](#)

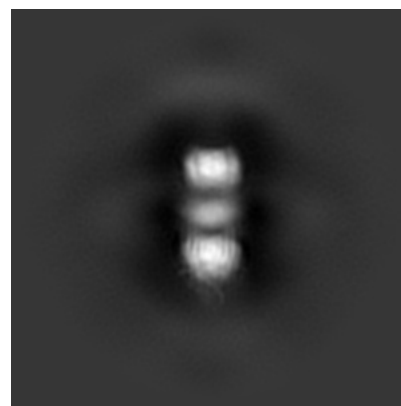
6.1.1 Primary map



X

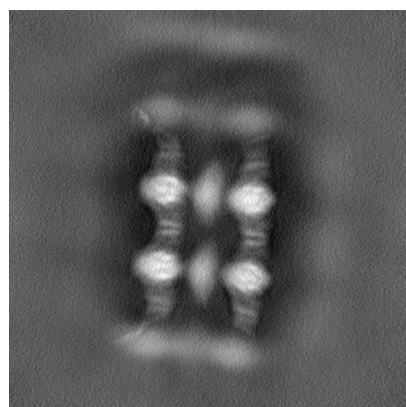


Y

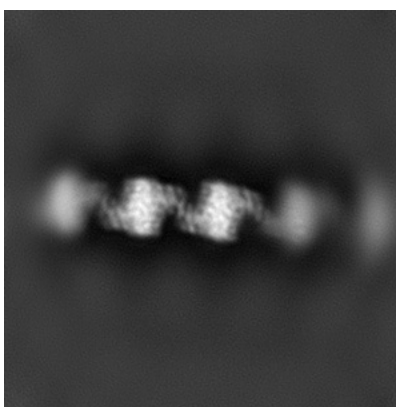


Z

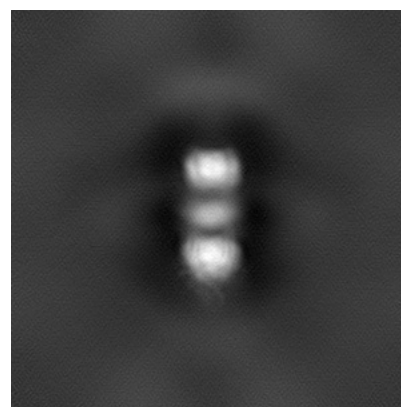
6.1.2 Raw map



X



Y

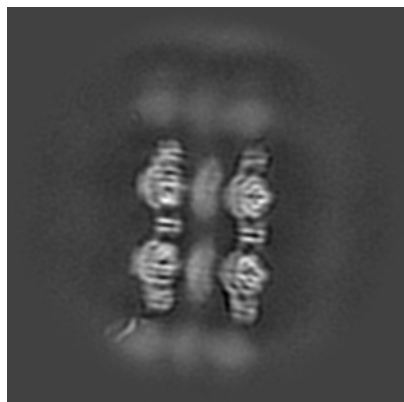


Z

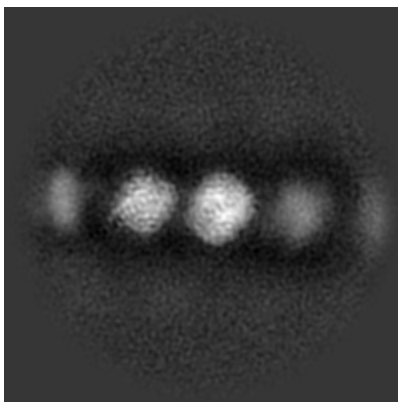
The images above show the map projected in three orthogonal directions.

6.2 Central slices [i](#)

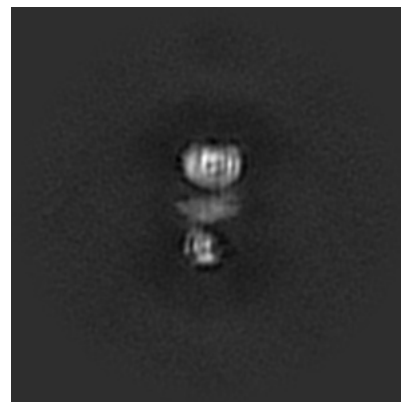
6.2.1 Primary map



X Index: 128

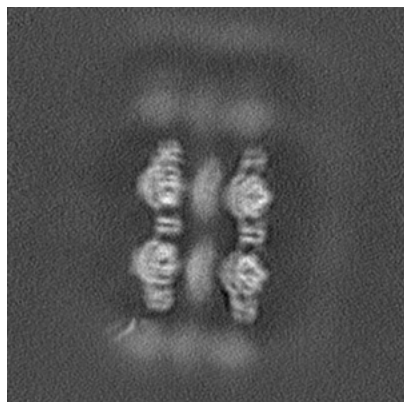


Y Index: 128

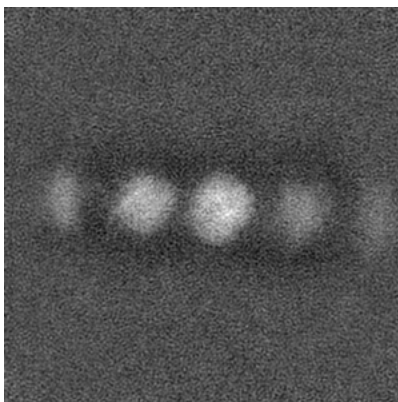


Z Index: 128

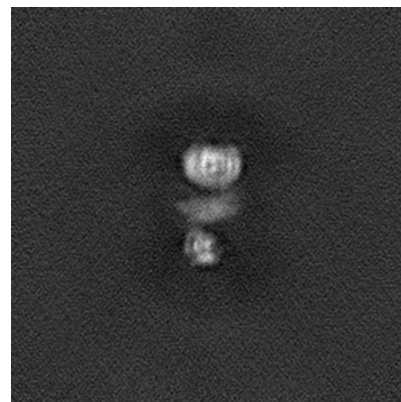
6.2.2 Raw map



X Index: 128



Y Index: 128

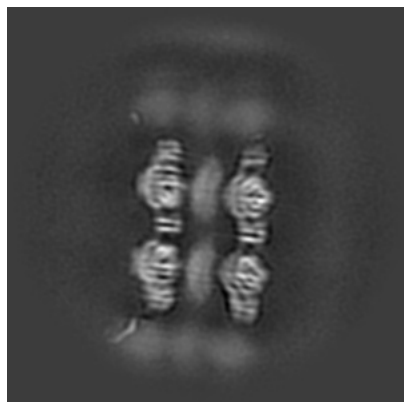


Z Index: 128

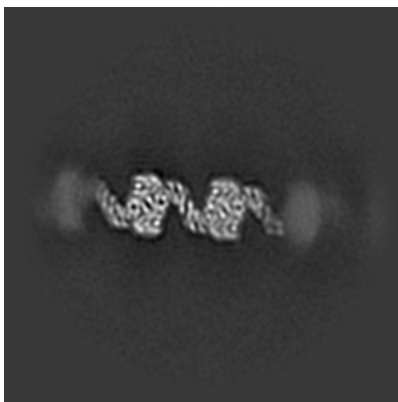
The images above show central slices of the map in three orthogonal directions.

6.3 Largest variance slices [i](#)

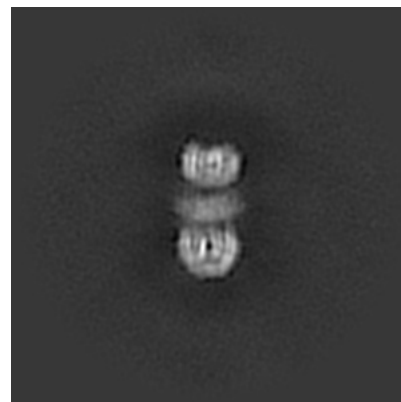
6.3.1 Primary map



X Index: 127

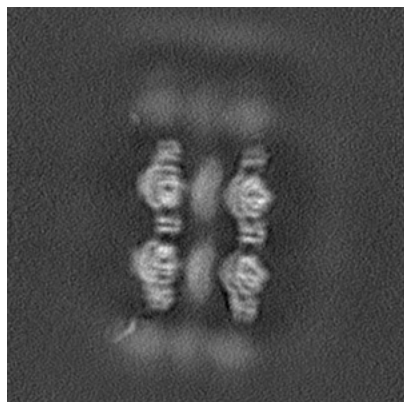


Y Index: 100

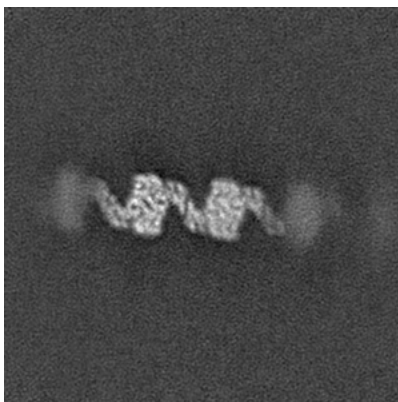


Z Index: 140

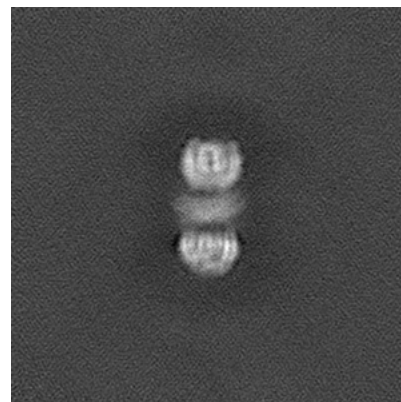
6.3.2 Raw map



X Index: 127



Y Index: 99

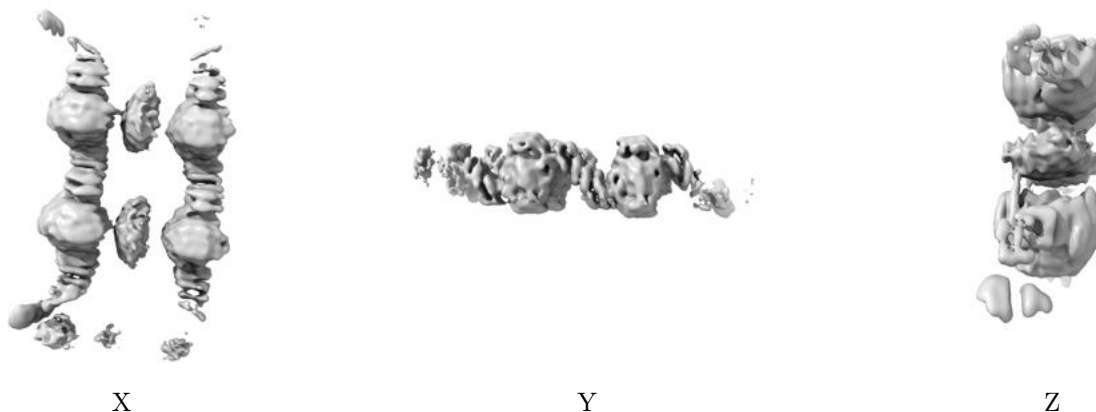


Z Index: 135

The images above show the largest variance slices of the map in three orthogonal directions.

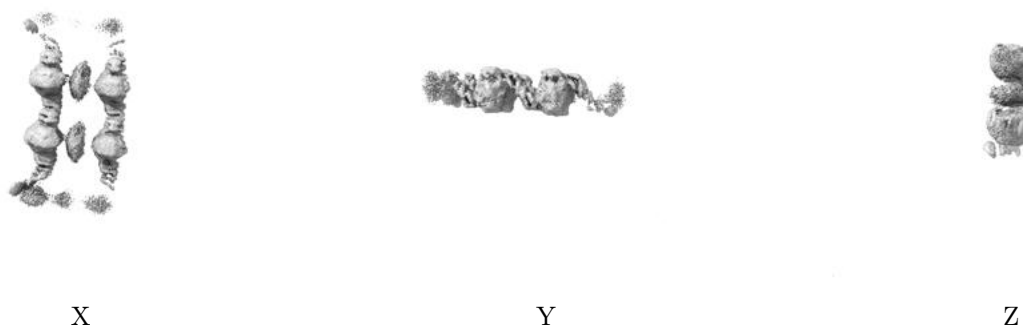
6.4 Orthogonal surface views [i](#)

6.4.1 Primary map



The images above show the 3D surface view of the map at the recommended contour level 0.256. These images, in conjunction with the slice images, may facilitate assessment of whether an appropriate contour level has been provided.

6.4.2 Raw map



These images show the 3D surface of the raw map. The raw map's contour level was selected so that its surface encloses the same volume as the primary map does at its recommended contour level.

6.5 Mask visualisation [i](#)

This section shows the 3D surface view of the primary map at 50% transparency overlaid with the specified mask at 0% transparency

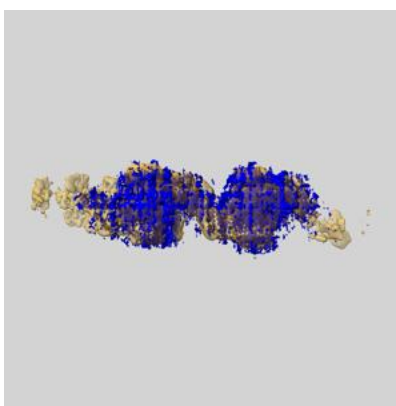
A mask typically either:

- Encompasses the whole structure
- Separates out a domain, a functional unit, a monomer or an area of interest from a larger structure

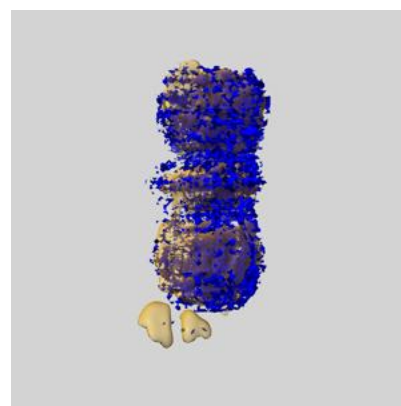
6.5.1 emd_14945_msk_1.map [i](#)



X



Y

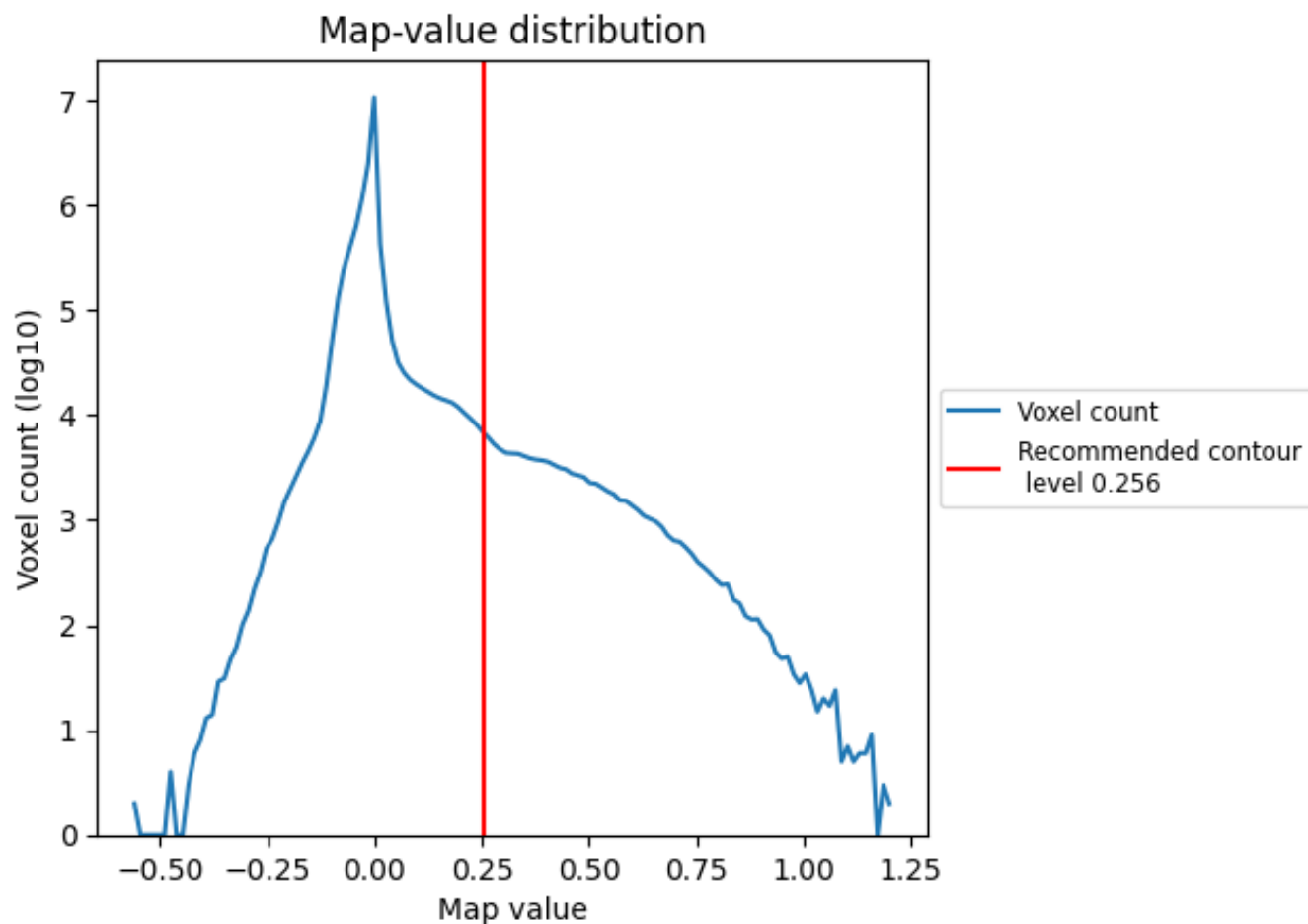


Z

7 Map analysis [i](#)

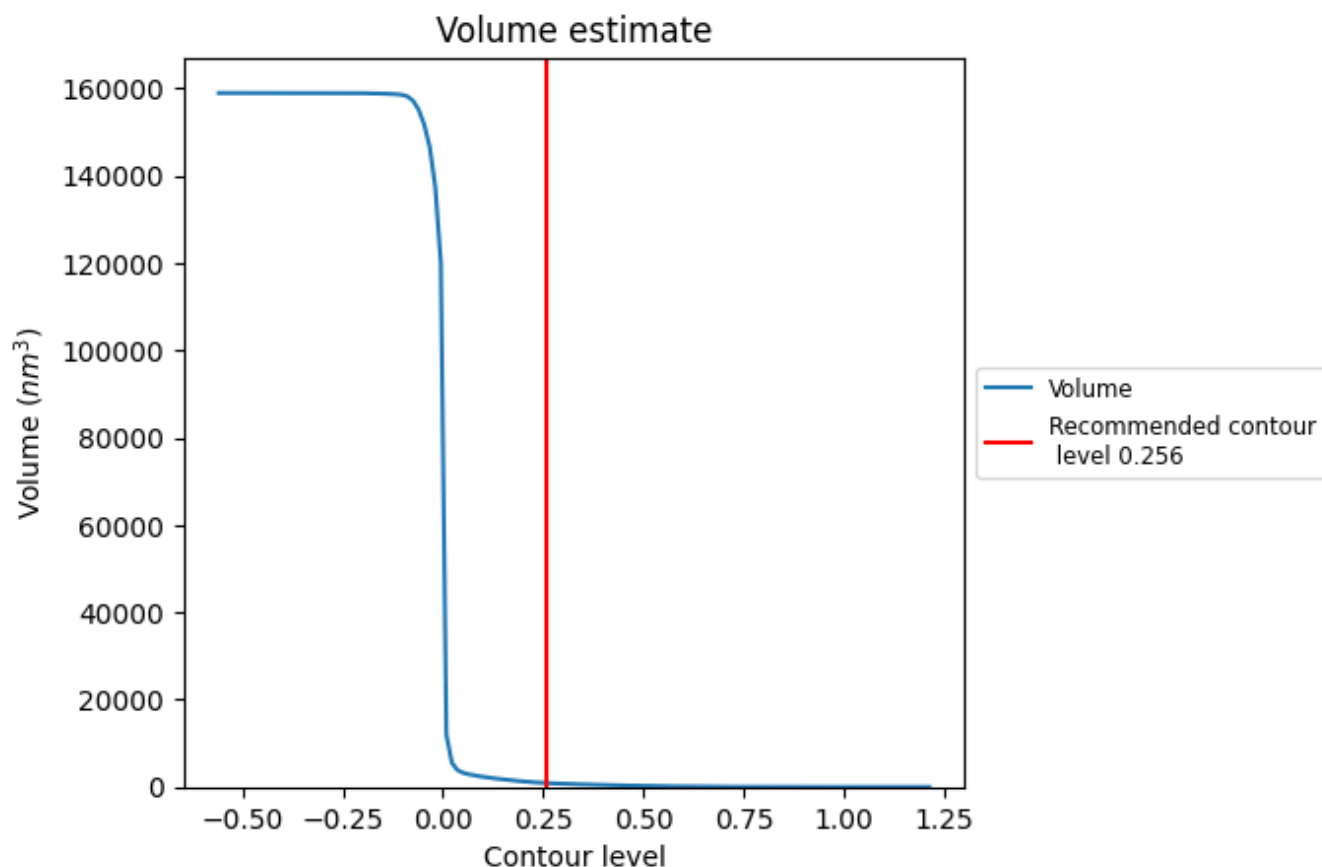
This section contains the results of statistical analysis of the map.

7.1 Map-value distribution [i](#)



The map-value distribution is plotted in 128 intervals along the x-axis. The y-axis is logarithmic. A spike in this graph at zero usually indicates that the volume has been masked.

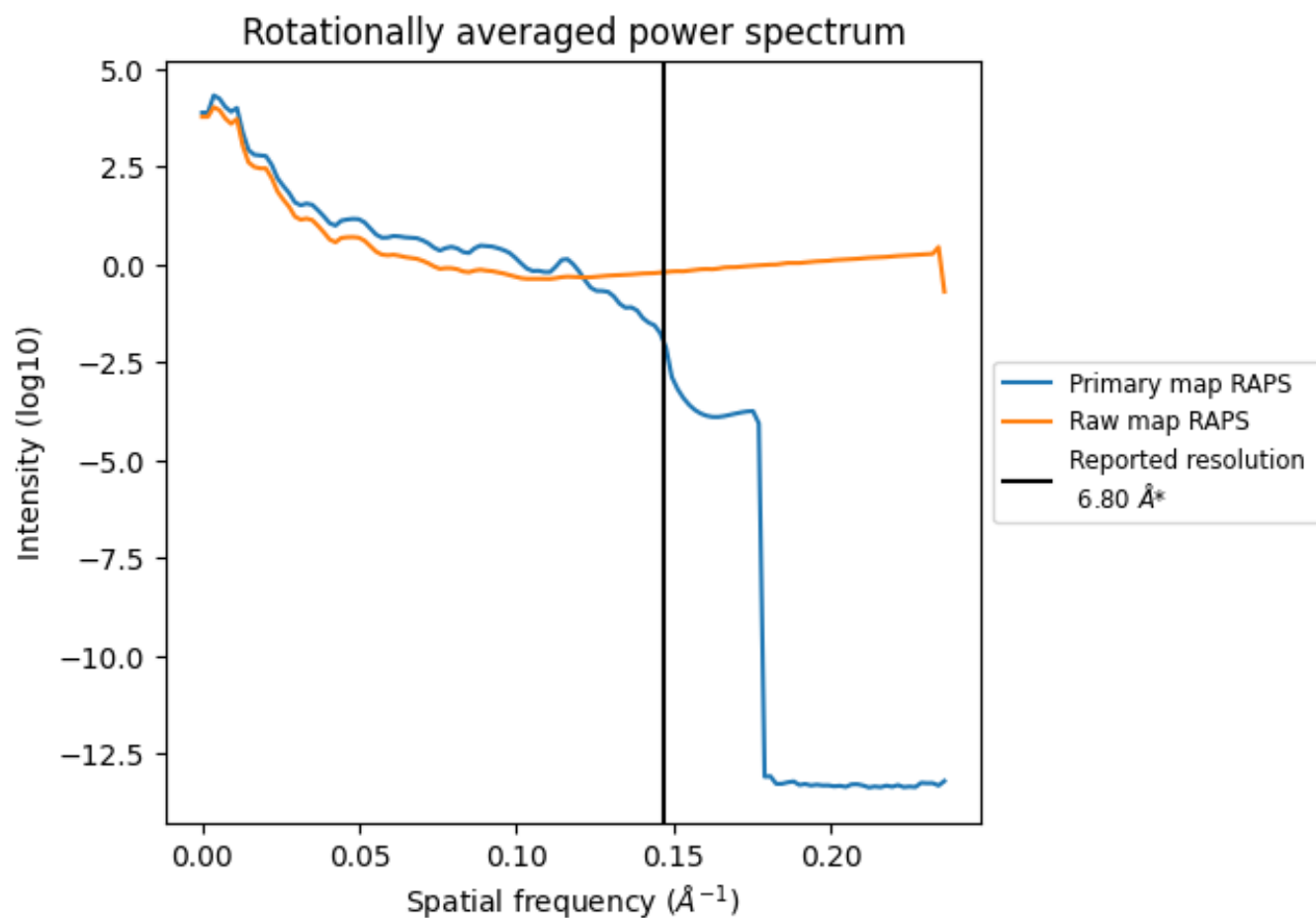
7.2 Volume estimate [i](#)



The volume at the recommended contour level is 908 nm³; this corresponds to an approximate mass of 820 kDa.

The volume estimate graph shows how the enclosed volume varies with the contour level. The recommended contour level is shown as a vertical line and the intersection between the line and the curve gives the volume of the enclosed surface at the given level.

7.3 Rotationally averaged power spectrum ⓘ

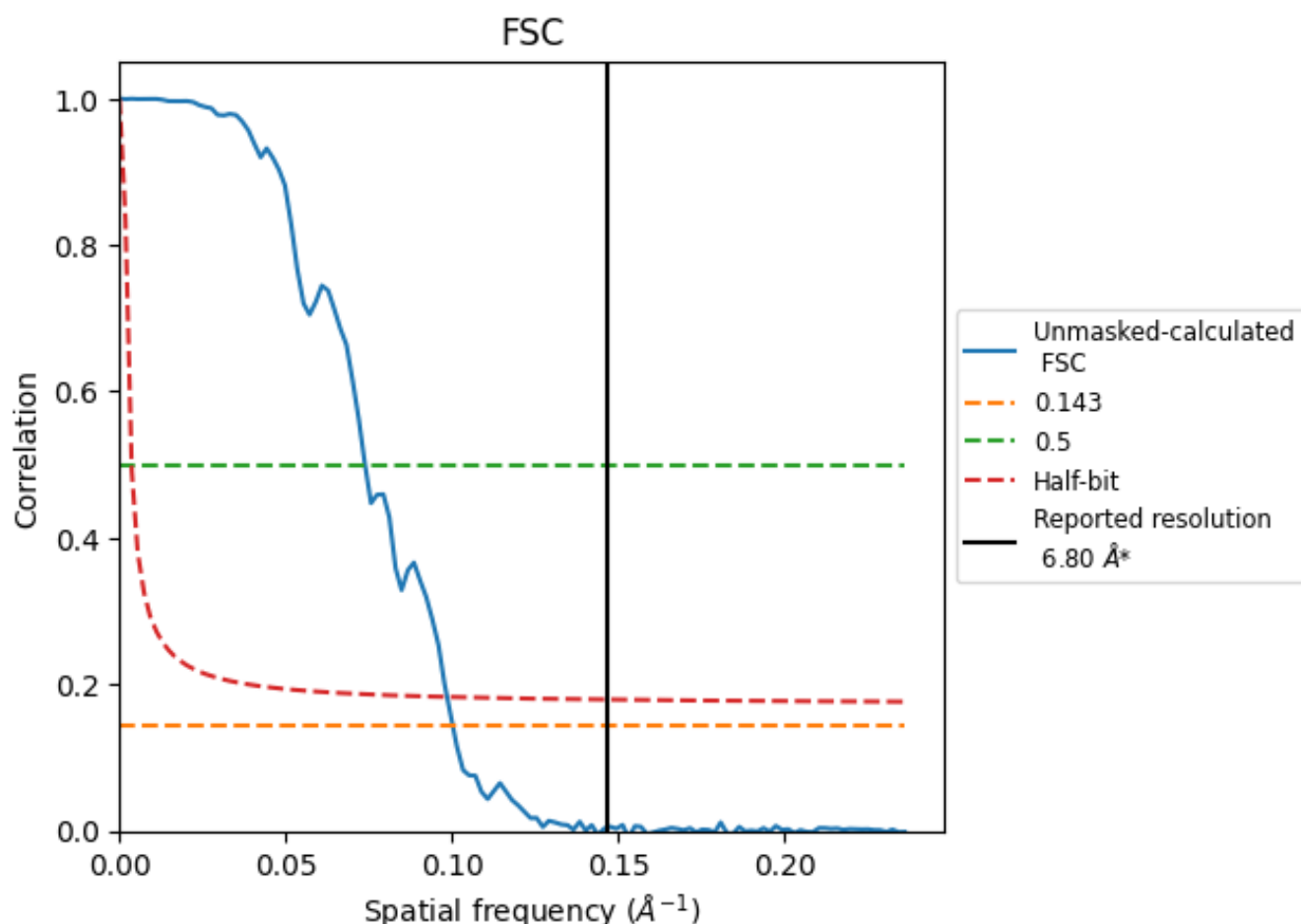


*Reported resolution corresponds to spatial frequency of 0.147 Å⁻¹

8 Fourier-Shell correlation [i](#)

Fourier-Shell Correlation (FSC) is the most commonly used method to estimate the resolution of single-particle and subtomogram-averaged maps. The shape of the curve depends on the imposed symmetry, mask and whether or not the two 3D reconstructions used were processed from a common reference. The reported resolution is shown as a black line. A curve is displayed for the half-bit criterion in addition to lines showing the 0.143 gold standard cut-off and 0.5 cut-off.

8.1 FSC [i](#)



*Reported resolution corresponds to spatial frequency of 0.147 \AA^{-1}

8.2 Resolution estimates [i](#)

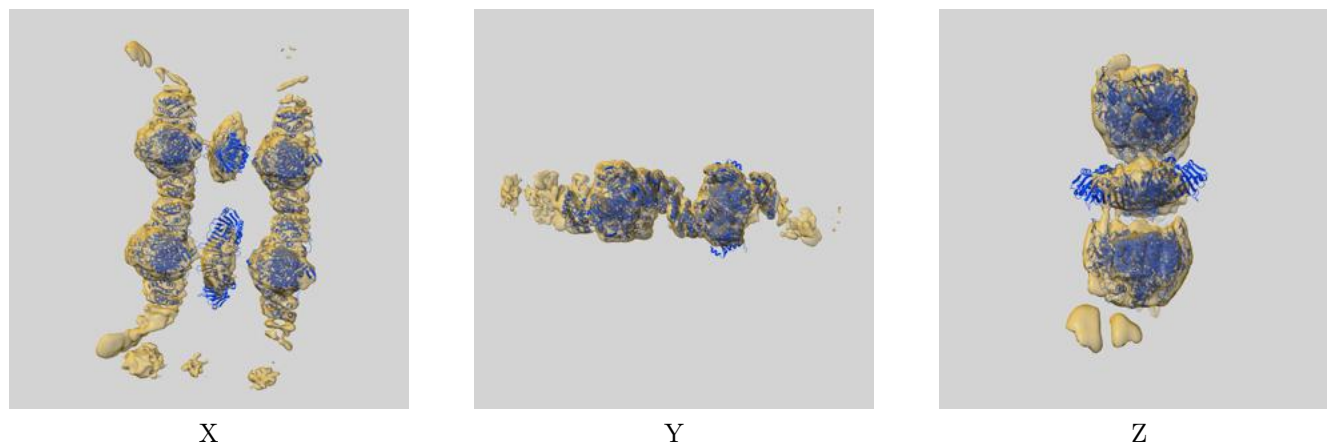
Resolution estimate (Å)	Estimation criterion (FSC cut-off)		
	0.143	0.5	Half-bit
Reported by author	6.80	-	-
Author-provided FSC curve	-	-	-
Unmasked-calculated*	9.97	13.53	10.14

*Resolution estimate based on FSC curve calculated by comparison of deposited half-maps. The value from deposited half-maps intersecting FSC 0.143 CUT-OFF 9.97 differs from the reported value 6.8 by more than 10 %

9 Map-model fit [i](#)

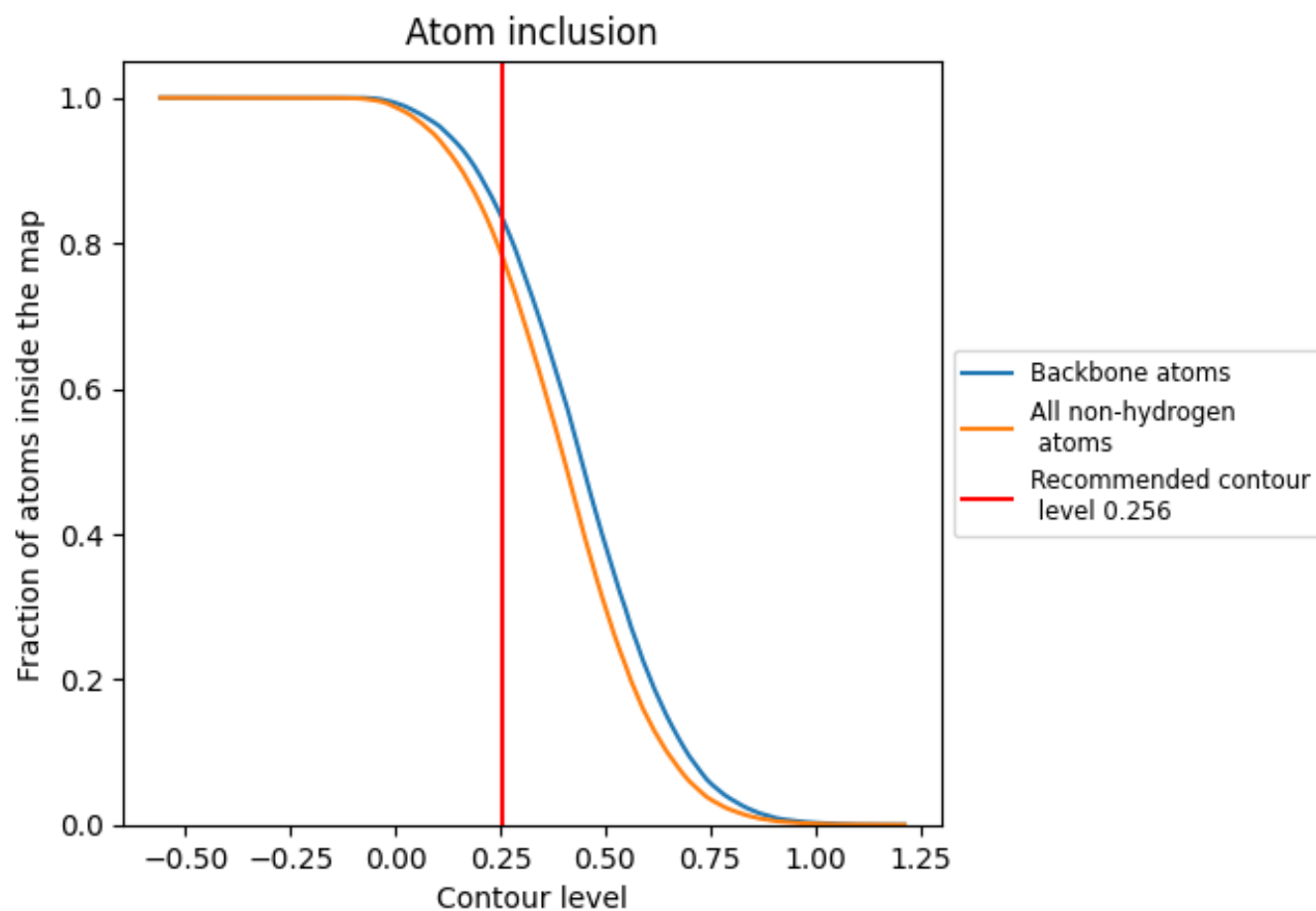
This section contains information regarding the fit between EMDB map EMD-14945 and PDB model 7ZSK. Per-residue inclusion information can be found in section [3](#) on page [4](#).

9.1 Map-model overlay [i](#)



The images above show the 3D surface view of the map at the recommended contour level 0.256 at 50% transparency in yellow overlaid with a ribbon representation of the model coloured in blue. These images allow for the visual assessment of the quality of fit between the atomic model and the map.

9.2 Atom inclusion [i](#)



At the recommended contour level, 83% of all backbone atoms, 78% of all non-hydrogen atoms, are inside the map.