



Full wwPDB X-ray Structure Validation Report ⓘ

Aug 21, 2020 – 01:30 AM BST

PDB ID : 5ZTY
Title : Crystal structure of human G protein coupled receptor
Authors : Li, X.T.; Hua, T.; Wu, L.J.; Liu, Z.J.
Deposited on : 2018-05-05
Resolution : 2.80 Å(reported)

This is a Full wwPDB X-ray Structure Validation Report for a publicly released PDB entry.

We welcome your comments at validation@mail.wwpdb.org

A user guide is available at

<https://www.wwpdb.org/validation/2017/XrayValidationReportHelp>

with specific help available everywhere you see the ⓘ symbol.

The following versions of software and data (see [references ⓘ](#)) were used in the production of this report:

MolProbity : 4.02b-467
Mogul : 1.8.5 (274361), CSD as541be (2020)
Xtriage (Phenix) : 1.13
EDS : 2.13.1
buster-report : 1.1.7 (2018)
Percentile statistics : 20191225.v01 (using entries in the PDB archive December 25th 2019)
Refmac : 5.8.0158
CCP4 : 7.0.044 (Gargrove)
Ideal geometry (proteins) : Engh & Huber (2001)
Ideal geometry (DNA, RNA) : Parkinson et al. (1996)
Validation Pipeline (wwPDB-VP) : 2.13.1

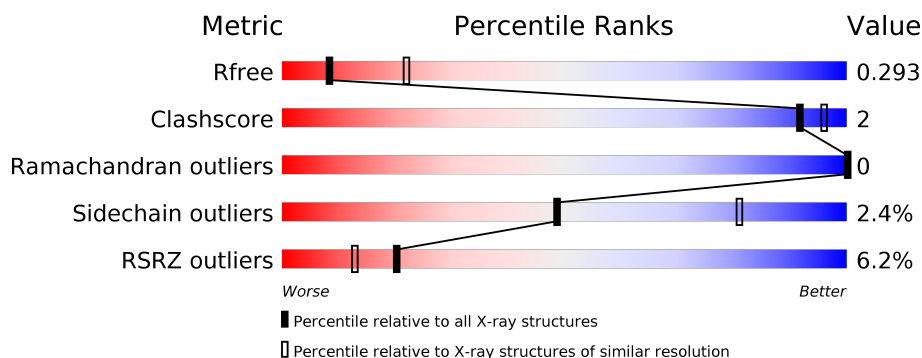
1 Overall quality at a glance

The following experimental techniques were used to determine the structure:

X-RAY DIFFRACTION

The reported resolution of this entry is 2.80 Å.

Percentile scores (ranging between 0-100) for global validation metrics of the entry are shown in the following graphic. The table shows the number of entries on which the scores are based.



Metric	Whole archive (#Entries)	Similar resolution (#Entries, resolution range(Å))
R_{free}	130704	3140 (2.80-2.80)
Clashscore	141614	3569 (2.80-2.80)
Ramachandran outliers	138981	3498 (2.80-2.80)
Sidechain outliers	138945	3500 (2.80-2.80)
RSRZ outliers	127900	3078 (2.80-2.80)

The table below summarises the geometric issues observed across the polymeric chains and their fit to the electron density. The red, orange, yellow and green segments on the lower bar indicate the fraction of residues that contain outliers for ≥ 3 , 2, 1 and 0 types of geometric quality criteria respectively. A grey segment represents the fraction of residues that are not modelled. The numeric value for each fraction is indicated below the corresponding segment, with a dot representing fractions $\leq 5\%$. The upper red bar (where present) indicates the fraction of residues that have poor fit to the electron density. The numeric value is given above the bar.

Mol	Chain	Length	Quality of chain
1	A	500	<div> <div>6%</div> <div>84%</div> <div>5% • 10%</div> </div>

The following table lists non-polymeric compounds, carbohydrate monomers and non-standard residues in protein, DNA, RNA chains that are outliers for geometric or electron-density-fit criteria:

Mol	Type	Chain	Res	Chirality	Geometry	Clashes	Electron density
3	OLA	A	1202	-	-	-	X
5	PEG	A	1206	-	-	-	X

2 Entry composition

There are 9 unique types of molecules in this entry. The entry contains 3741 atoms, of which 0 are hydrogens and 0 are deuteriums.

In the tables below, the ZeroOcc column contains the number of atoms modelled with zero occupancy, the AltConf column contains the number of residues with at least one atom in alternate conformation and the Trace column contains the number of residues modelled with at most 2 atoms.

- Molecule 1 is a protein called G protein coupled receptor,T4 lysozyme,G protein coupled receptor.

Mol	Chain	Residues	Atoms					ZeroOcc	AltConf	Trace
1	A	449	Total	C	N	O	S	0	2	0
			3523	2296	598	606	23			

There are 54 discrepancies between the modelled and reference sequences:

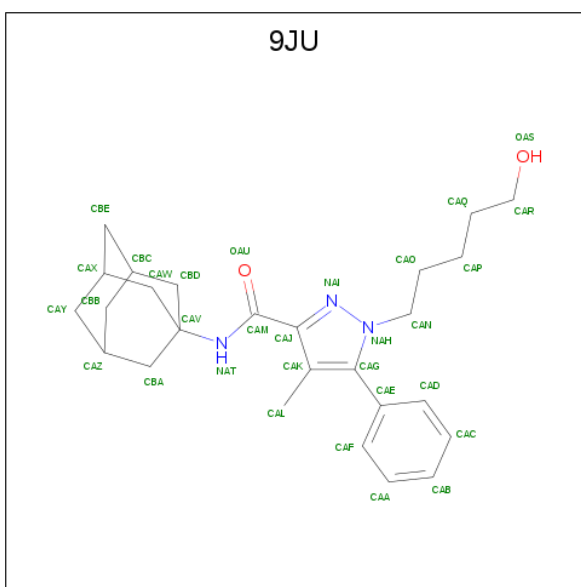
Chain	Residue	Modelled	Actual	Comment	Reference
A	2	MET	-	initiating methionine	UNP P34972
A	3	LYS	-	expression tag	UNP P34972
A	4	THR	-	expression tag	UNP P34972
A	5	ILE	-	expression tag	UNP P34972
A	6	ILE	-	expression tag	UNP P34972
A	7	ALA	-	expression tag	UNP P34972
A	8	LEU	-	expression tag	UNP P34972
A	9	SER	-	expression tag	UNP P34972
A	10	TYR	-	expression tag	UNP P34972
A	11	ILE	-	expression tag	UNP P34972
A	12	PHE	-	expression tag	UNP P34972
A	13	CYS	-	expression tag	UNP P34972
A	14	LEU	-	expression tag	UNP P34972
A	15	VAL	-	expression tag	UNP P34972
A	16	PHE	-	expression tag	UNP P34972
A	17	ALA	-	expression tag	UNP P34972
A	18	GLY	-	expression tag	UNP P34972
A	19	ALA	-	expression tag	UNP P34972
A	20	PRO	-	expression tag	UNP P34972
A	78	LEU	GLY	engineered mutation	UNP P34972
A	127	ALA	THR	engineered mutation	UNP P34972
A	153	LEU	THR	engineered mutation	UNP P34972
A	1053	THR	CYS	engineered mutation	UNP D9IEF7
A	1096	ALA	CYS	engineered mutation	UNP D9IEF7
A	242	GLU	ARG	engineered mutation	UNP P34972
A	304	GLU	GLY	engineered mutation	UNP P34972

Continued on next page...

Continued from previous page...

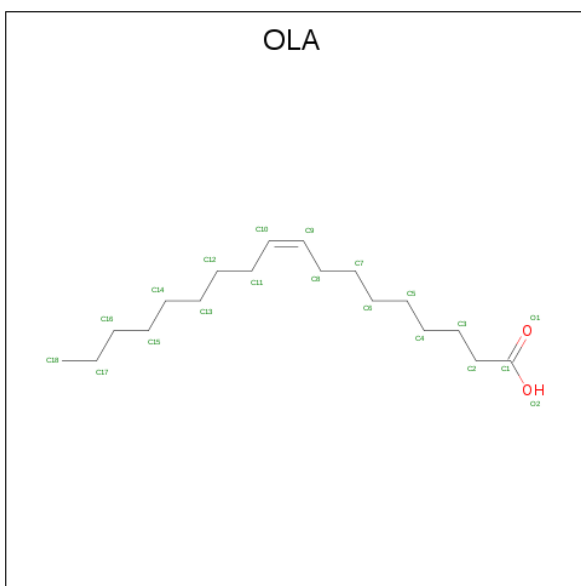
Chain	Residue	Modelled	Actual	Comment	Reference
A	326	GLU	-	expression tag	UNP P34972
A	327	PHE	-	expression tag	UNP P34972
A	328	LEU	-	expression tag	UNP P34972
A	329	GLU	-	expression tag	UNP P34972
A	330	VAL	-	expression tag	UNP P34972
A	331	LEU	-	expression tag	UNP P34972
A	332	PHE	-	expression tag	UNP P34972
A	333	GLN	-	expression tag	UNP P34972
A	334	GLY	-	expression tag	UNP P34972
A	335	PRO	-	expression tag	UNP P34972
A	336	HIS	-	expression tag	UNP P34972
A	337	HIS	-	expression tag	UNP P34972
A	338	HIS	-	expression tag	UNP P34972
A	339	HIS	-	expression tag	UNP P34972
A	340	HIS	-	expression tag	UNP P34972
A	341	HIS	-	expression tag	UNP P34972
A	342	HIS	-	expression tag	UNP P34972
A	343	HIS	-	expression tag	UNP P34972
A	344	HIS	-	expression tag	UNP P34972
A	345	HIS	-	expression tag	UNP P34972
A	346	ASP	-	expression tag	UNP P34972
A	347	TYR	-	expression tag	UNP P34972
A	348	LYS	-	expression tag	UNP P34972
A	349	ASP	-	expression tag	UNP P34972
A	350	ASP	-	expression tag	UNP P34972
A	351	ASP	-	expression tag	UNP P34972
A	352	ASP	-	expression tag	UNP P34972
A	353	LYS	-	expression tag	UNP P34972

- Molecule 2 is N-(adamantan-1-yl)-1-(5-hydroxypentyl)-4-methyl-5-phenyl-1H-pyrazole-3-carboxamide (three-letter code: 9JU) (formula: C₂₆H₃₅N₃O₂).



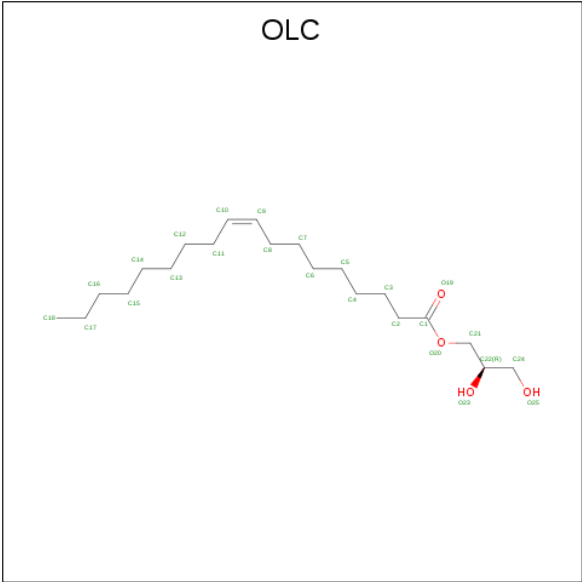
Mol	Chain	Residues	Atoms				ZeroOcc	AltConf
2	A	1	Total	C	N	O	0	0
			31	26	3	2		

- Molecule 3 is OLEIC ACID (three-letter code: OLA) (formula: $\text{C}_{18}\text{H}_{34}\text{O}_2$).



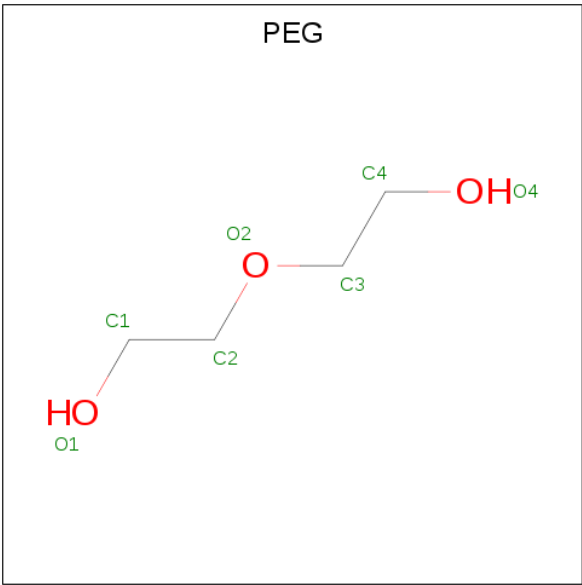
Mol	Chain	Residues	Atoms	ZeroOcc	AltConf
3	A	1	Total C 11 11	0	0

- Molecule 4 is (2R)-2,3-dihydroxypropyl (9Z)-octadec-9-enoate (three-letter code: OLC) (formula: C₂₁H₄₀O₄).



Mol	Chain	Residues	Atoms			ZeroOcc	AltConf
4	A	1	Total	C	O	0	0
			17	13	4		
4	A	1	Total	C	O	0	0
			17	13	4		
4	A	1	Total	C		0	0
			11	11			

- Molecule 5 is DI(HYDROXYETHYL)ETHER (three-letter code: PEG) (formula: C₄H₁₀O₃).



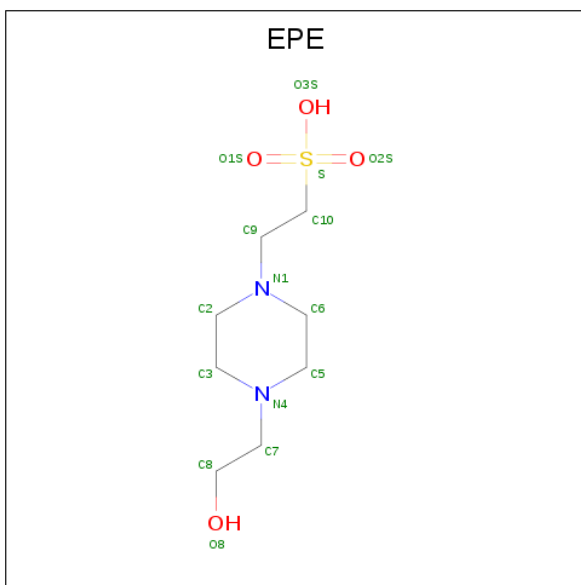
Mol	Chain	Residues	Atoms			ZeroOcc	AltConf
5	A	1	Total	C	O	0	0
			7	4	3		

Continued on next page...

Continued from previous page...

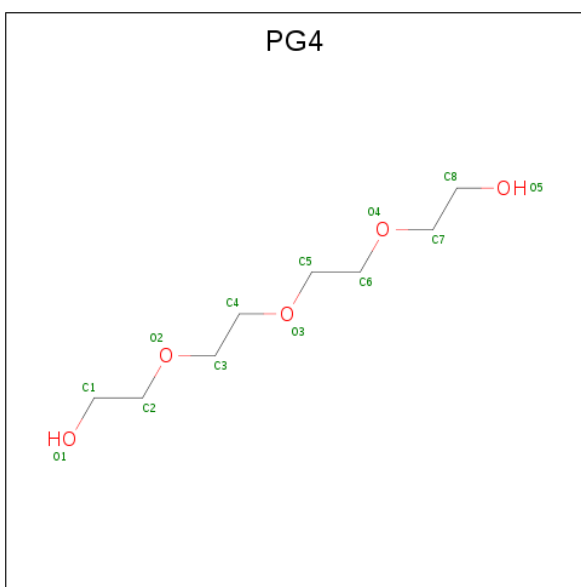
Mol	Chain	Residues	Atoms			ZeroOcc	AltConf
5	A	1	Total	C	O	0	0
			7	4	3		

- Molecule 6 is 4-(2-HYDROXYETHYL)-1-PIPERAZINE ETHANESULFONIC ACID (three-letter code: EPE) (formula: C₈H₁₈N₂O₄S).



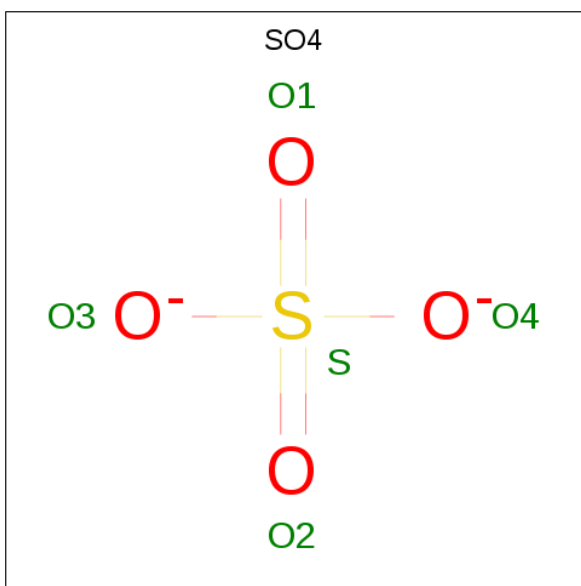
Mol	Chain	Residues	Atoms					ZeroOcc	AltConf
6	A	1	Total	C	N	O	S	0	0
			15	8	2	4	1		
6	A	1	Total	C	N	O	S	0	0
			15	8	2	4	1		

- Molecule 7 is TETRAETHYLENE GLYCOL (three-letter code: PG4) (formula: C₈H₁₈O₅).



Mol	Chain	Residues	Atoms			ZeroOcc	AltConf
7	A	1	Total	C	O	0	0
			13	8	5		

- Molecule 8 is SULFATE ION (three-letter code: SO4) (formula: O₄S).



Mol	Chain	Residues	Atoms			ZeroOcc	AltConf
8	A	1	Total	O	S	0	0
			5	4	1		
8	A	1	Total	O	S	0	0
			5	4	1		
8	A	1	Total	O	S	0	0
			5	4	1		

Continued on next page...

Continued from previous page...

Mol	Chain	Residues	Atoms			ZeroOcc	AltConf
8	A	1	Total	O	S	0	0
			5	4	1		
8	A	1	Total	O	S	0	0
			5	4	1		

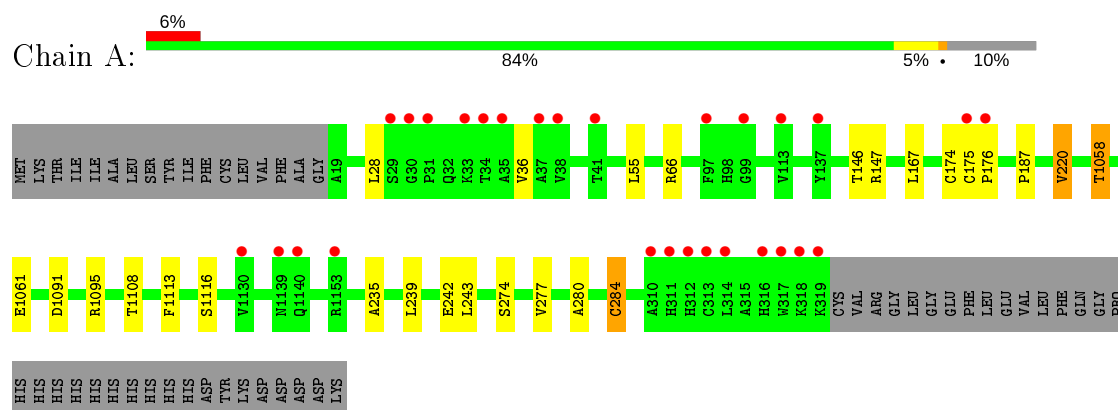
- Molecule 9 is water.

Mol	Chain	Residues	Atoms		ZeroOcc	AltConf
9	A	49	Total	O	0	0
			49	49		

3 Residue-property plots [i](#)

These plots are drawn for all protein, RNA, DNA and oligosaccharide chains in the entry. The first graphic for a chain summarises the proportions of the various outlier classes displayed in the second graphic. The second graphic shows the sequence view annotated by issues in geometry and electron density. Residues are color-coded according to the number of geometric quality criteria for which they contain at least one outlier: green = 0, yellow = 1, orange = 2 and red = 3 or more. A red dot above a residue indicates a poor fit to the electron density ($RSRZ > 2$). Stretches of 2 or more consecutive residues without any outlier are shown as a green connector. Residues present in the sample, but not in the model, are shown in grey.

- Molecule 1: G protein coupled receptor,T4 lysozyme,G protein coupled receptor



4 Data and refinement statistics

Property	Value	Source
Space group	P 21 21 21	Depositor
Cell constants a, b, c, α , β , γ	34.30Å 106.24Å 183.40Å 90.00° 90.00° 90.00°	Depositor
Resolution (Å)	29.91 – 2.80 29.38 – 2.80	Depositor EDS
% Data completeness (in resolution range)	97.1 (29.91-2.80) 97.1 (29.38-2.80)	Depositor EDS
R_{merge}	(Not available)	Depositor
R_{sym}	(Not available)	Depositor
$\langle I/\sigma(I) \rangle$ ¹	2.64 (at 2.80Å)	Xtriage
Refinement program	BUSTER 2.10.3	Depositor
R, R_{free}	0.224 , 0.275 0.243 , 0.293	Depositor DCC
R_{free} test set	856 reflections (5.08%)	wwPDB-VP
Wilson B-factor (Å ²)	68.9	Xtriage
Anisotropy	0.717	Xtriage
Bulk solvent k_{sol} (e/Å ³), B_{sol} (Å ²)	0.31 , 93.9	EDS
L-test for twinning ²	$\langle L \rangle = 0.46$, $\langle L^2 \rangle = 0.29$	Xtriage
Estimated twinning fraction	No twinning to report.	Xtriage
F_o, F_c correlation	0.94	EDS
Total number of atoms	3741	wwPDB-VP
Average B, all atoms (Å ²)	95.0	wwPDB-VP

Xtriage's analysis on translational NCS is as follows: *The largest off-origin peak in the Patterson function is 6.59% of the height of the origin peak. No significant pseudotranslation is detected.*

¹Intensities estimated from amplitudes.

²Theoretical values of $\langle |L| \rangle$, $\langle L^2 \rangle$ for acentric reflections are 0.5, 0.333 respectively for untwinned datasets, and 0.375, 0.2 for perfectly twinned datasets.

5 Model quality

5.1 Standard geometry

Bond lengths and bond angles in the following residue types are not validated in this section: OLA, EPE, PG4, OLC, SO4, PEG, 9JU

The Z score for a bond length (or angle) is the number of standard deviations the observed value is removed from the expected value. A bond length (or angle) with $|Z| > 5$ is considered an outlier worth inspection. RMSZ is the root-mean-square of all Z scores of the bond lengths (or angles).

Mol	Chain	Bond lengths		Bond angles	
		RMSZ	$\# Z > 5$	RMSZ	$\# Z > 5$
1	A	0.48	0/3612	0.61	0/4908

There are no bond length outliers.

There are no bond angle outliers.

There are no chirality outliers.

There are no planarity outliers.

5.2 Too-close contacts

In the following table, the Non-H and H(model) columns list the number of non-hydrogen atoms and hydrogen atoms in the chain respectively. The H(added) column lists the number of hydrogen atoms added and optimized by MolProbity. The Clashes column lists the number of clashes within the asymmetric unit, whereas Symm-Clashes lists symmetry related clashes.

Mol	Chain	Non-H	H(model)	H(added)	Clashes	Symm-Clashes
1	A	3523	0	3619	12	0
2	A	31	0	0	0	0
3	A	11	0	16	0	0
4	A	45	0	60	0	0
5	A	14	0	20	0	0
6	A	30	0	34	0	0
7	A	13	0	18	0	0
8	A	25	0	0	0	0
9	A	49	0	0	0	0
All	All	3741	0	3767	12	0

The all-atom clashscore is defined as the number of clashes found per 1000 atoms (including hydrogen atoms). The all-atom clashscore for this structure is 2.

All (12) close contacts within the same asymmetric unit are listed below, sorted by their clash magnitude.

Atom-1	Atom-2	Interatomic distance (Å)	Clash overlap (Å)
1:A:175:CYS:HB2	1:A:176:PRO:HD3	1.58	0.85
1:A:1058:THR:HG22	1:A:1061:GLU:H	1.44	0.81
1:A:239:LEU:HA	1:A:242:GLU:HG2	1.80	0.63
1:A:174:CYS:HB3	1:A:187:PRO:HB3	1.88	0.56
1:A:1091:ASP:O	1:A:1095:ARG:HG3	2.10	0.52
1:A:220:VAL:HG12	1:A:235:ALA:HB2	1.93	0.51
1:A:1113:PHE:HB3	1:A:1116:SER:HB2	1.96	0.46
1:A:280:ALA:O	1:A:284:CYS:HB2	2.17	0.45
1:A:175:CYS:HB2	1:A:176:PRO:CD	2.38	0.45
1:A:66:ARG:HA	1:A:147:ARG:HD2	2.03	0.41
1:A:274:SER:HB3	1:A:277:VAL:HG23	2.03	0.40
1:A:167:LEU:HD12	1:A:167:LEU:HA	1.93	0.40

There are no symmetry-related clashes.

5.3 Torsion angles [i](#)

5.3.1 Protein backbone [i](#)

In the following table, the Percentiles column shows the percent Ramachandran outliers of the chain as a percentile score with respect to all X-ray entries followed by that with respect to entries of similar resolution.

The Analysed column shows the number of residues for which the backbone conformation was analysed, and the total number of residues.

Mol	Chain	Analysed	Favoured	Allowed	Outliers	Percentiles	
1	A	449/500 (90%)	436 (97%)	13 (3%)	0	100	100

There are no Ramachandran outliers to report.

5.3.2 Protein sidechains [i](#)

In the following table, the Percentiles column shows the percent sidechain outliers of the chain as a percentile score with respect to all X-ray entries followed by that with respect to entries of similar resolution.

The Analysed column shows the number of residues for which the sidechain conformation was analysed, and the total number of residues.

Mol	Chain	Analysed	Rotameric	Outliers	Percentiles
1	A	377/425 (89%)	368 (98%)	9 (2%)	49 81

All (9) residues with a non-rotameric sidechain are listed below:

Mol	Chain	Res	Type
1	A	28	LEU
1	A	36	VAL
1	A	55	LEU
1	A	146	THR
1	A	220	VAL
1	A	1058	THR
1	A	1108	THR
1	A	243	LEU
1	A	284	CYS

Some sidechains can be flipped to improve hydrogen bonding and reduce clashes. All (1) such sidechains are listed below:

Mol	Chain	Res	Type
1	A	1131	ASN

5.3.3 RNA ⓘ

There are no RNA molecules in this entry.

5.4 Non-standard residues in protein, DNA, RNA chains ⓘ

There are no non-standard protein/DNA/RNA residues in this entry.

5.5 Carbohydrates ⓘ

There are no monosaccharides in this entry.

5.6 Ligand geometry ⓘ

15 ligands are modelled in this entry.

In the following table, the Counts columns list the number of bonds (or angles) for which Mogul statistics could be retrieved, the number of bonds (or angles) that are observed in the model and the number of bonds (or angles) that are defined in the Chemical Component Dictionary. The Link column lists molecule types, if any, to which the group is linked. The Z score for a bond

length (or angle) is the number of standard deviations the observed value is removed from the expected value. A bond length (or angle) with $|Z| > 2$ is considered an outlier worth inspection. RMSZ is the root-mean-square of all Z scores of the bond lengths (or angles).

Mol	Type	Chain	Res	Link	Bond lengths			Bond angles		
					Counts	RMSZ	# Z > 2	Counts	RMSZ	# Z > 2
8	SO4	A	1211	-	4,4,4	0.14	0	6,6,6	0.10	0
4	OLC	A	1205	-	10,10,24	1.09	1 (10%)	9,9,25	0.96	1 (11%)
8	SO4	A	1215	-	4,4,4	0.15	0	6,6,6	0.09	0
2	9JU	A	1201	-	34,35,35	2.89	9 (26%)	44,51,51	1.27	5 (11%)
8	SO4	A	1214	-	4,4,4	0.18	0	6,6,6	0.06	0
6	EPE	A	1208	-	15,15,15	1.04	1 (6%)	18,20,20	0.38	0
8	SO4	A	1213	-	4,4,4	0.33	0	6,6,6	0.20	0
6	EPE	A	1209	-	15,15,15	1.29	1 (6%)	18,20,20	0.39	0
5	PEG	A	1207	-	6,6,6	0.51	0	5,5,5	0.47	0
5	PEG	A	1206	-	6,6,6	0.50	0	5,5,5	0.34	0
4	OLC	A	1203	-	16,16,24	1.35	2 (12%)	17,17,25	0.86	2 (11%)
3	OLA	A	1202	-	10,10,19	1.23	1 (10%)	9,9,19	0.73	0
8	SO4	A	1212	-	4,4,4	0.19	0	6,6,6	0.10	0
7	PG4	A	1210	-	12,12,12	0.51	0	11,11,11	0.33	0
4	OLC	A	1204	-	16,16,24	1.34	2 (12%)	17,17,25	0.92	2 (11%)

In the following table, the Chirals column lists the number of chiral outliers, the number of chiral centers analysed, the number of these observed in the model and the number defined in the Chemical Component Dictionary. Similar counts are reported in the Torsion and Rings columns. '-' means no outliers of that kind were identified.

Mol	Type	Chain	Res	Link	Chirals	Torsions	Rings
4	OLC	A	1205	-	-	6/8/8/24	-
2	9JU	A	1201	-	-	6/15/46/46	0/6/5/5
6	EPE	A	1208	-	-	6/9/19/19	0/1/1/1
6	EPE	A	1209	-	-	2/9/19/19	0/1/1/1
5	PEG	A	1207	-	-	4/4/4/4	-
5	PEG	A	1206	-	-	3/4/4/4	-
4	OLC	A	1203	-	-	7/16/16/24	-
3	OLA	A	1202	-	-	4/8/8/17	-
7	PG4	A	1210	-	-	4/10/10/10	-
4	OLC	A	1204	-	-	13/16/16/24	-

All (17) bond length outliers are listed below:

Mol	Chain	Res	Type	Atoms	Z	Observed(Å)	Ideal(Å)
2	A	1201	9JU	CAJ-CAM	-9.43	1.36	1.50
2	A	1201	9JU	CAG-CAK	-9.28	1.33	1.40
2	A	1201	9JU	CAE-CAG	-5.52	1.35	1.48
6	A	1209	EPE	C10-S	-4.87	1.70	1.77
6	A	1208	EPE	C10-S	-3.94	1.71	1.77
3	A	1202	OLA	C10-C9	3.69	1.53	1.31
4	A	1203	OLC	C10-C9	3.65	1.53	1.28
4	A	1204	OLC	C10-C9	3.65	1.53	1.28
2	A	1201	9JU	CBD-CAV	3.22	1.60	1.53
4	A	1205	OLC	C9-C10	3.18	1.53	1.29
4	A	1203	OLC	O20-C1	2.78	1.41	1.33
2	A	1201	9JU	CAJ-CAK	-2.75	1.34	1.40
4	A	1204	OLC	O20-C1	2.70	1.41	1.33
2	A	1201	9JU	CAW-CAV	2.56	1.58	1.53
2	A	1201	9JU	CBA-CAV	2.52	1.58	1.53
2	A	1201	9JU	CAN-NAH	2.41	1.51	1.47
2	A	1201	9JU	CBE-CAX	2.36	1.59	1.52

All (10) bond angle outliers are listed below:

Mol	Chain	Res	Type	Atoms	Z	Observed(°)	Ideal(°)
2	A	1201	9JU	CAL-CAK-CAG	-4.21	125.31	128.20
2	A	1201	9JU	CAG-NAH-NAI	-3.62	108.38	112.63
2	A	1201	9JU	CAG-CAK-CAJ	3.21	105.89	103.07
2	A	1201	9JU	CAN-NAH-CAG	2.85	132.12	128.48
4	A	1204	OLC	O20-C1-C2	2.43	119.52	111.91
4	A	1205	OLC	C8-C9-C10	-2.31	112.69	131.07
4	A	1203	OLC	O20-C1-C2	2.29	119.08	111.91
2	A	1201	9JU	CAE-CAG-CAK	-2.18	126.01	129.35
4	A	1204	OLC	C8-C9-C10	-2.16	112.15	126.84
4	A	1203	OLC	C8-C9-C10	-2.07	112.75	126.84

There are no chirality outliers.

All (55) torsion outliers are listed below:

Mol	Chain	Res	Type	Atoms
4	A	1205	OLC	C11-C10-C9-C8
2	A	1201	9JU	CAD-CAE-CAG-NAH
6	A	1208	EPE	S-C10-C9-N1
6	A	1208	EPE	C9-C10-S-O1S
6	A	1208	EPE	C9-C10-S-O3S
4	A	1204	OLC	C21-C22-C24-O25

Continued on next page...

Continued from previous page...

Mol	Chain	Res	Type	Atoms
5	A	1206	PEG	O1-C1-C2-O2
4	A	1204	OLC	C2-C1-O20-C21
4	A	1204	OLC	O19-C1-O20-C21
4	A	1203	OLC	C2-C1-O20-C21
4	A	1203	OLC	O19-C1-O20-C21
4	A	1204	OLC	O20-C21-C22-O23
5	A	1207	PEG	O2-C3-C4-O4
3	A	1202	OLA	C11-C12-C13-C14
4	A	1203	OLC	C4-C5-C6-C7
4	A	1204	OLC	C2-C3-C4-C5
4	A	1203	OLC	C2-C3-C4-C5
4	A	1205	OLC	C3-C4-C5-C6
4	A	1203	OLC	C3-C4-C5-C6
7	A	1210	PG4	O3-C5-C6-O4
4	A	1204	OLC	C4-C5-C6-C7
4	A	1204	OLC	O23-C22-C24-O25
2	A	1201	9JU	CAF-CAE-CAG-NAH
2	A	1201	9JU	NAH-CAN-CAO-CAP
4	A	1204	OLC	C5-C6-C7-C8
5	A	1207	PEG	O1-C1-C2-O2
4	A	1205	OLC	C6-C7-C8-C9
4	A	1204	OLC	C1-C2-C3-C4
7	A	1210	PG4	O1-C1-C2-O2
4	A	1205	OLC	C2-C3-C4-C5
6	A	1209	EPE	C8-C7-N4-C5
4	A	1205	OLC	C5-C6-C7-C8
4	A	1204	OLC	C6-C7-C8-C9
6	A	1209	EPE	C8-C7-N4-C3
3	A	1202	OLA	C11-C10-C9-C8
4	A	1203	OLC	O20-C21-C22-C24
2	A	1201	9JU	CAD-CAE-CAG-CAK
3	A	1202	OLA	C5-C6-C7-C8
2	A	1201	9JU	CAN-CAO-CAP-CAQ
6	A	1208	EPE	C8-C7-N4-C3
2	A	1201	9JU	CAF-CAE-CAG-CAK
5	A	1207	PEG	C4-C3-O2-C2
5	A	1207	PEG	C1-C2-O2-C3
6	A	1208	EPE	C8-C7-N4-C5
5	A	1206	PEG	C1-C2-O2-C3
5	A	1206	PEG	C4-C3-O2-C2
7	A	1210	PG4	C8-C7-O4-C6
4	A	1204	OLC	O20-C21-C22-C24

Continued on next page...

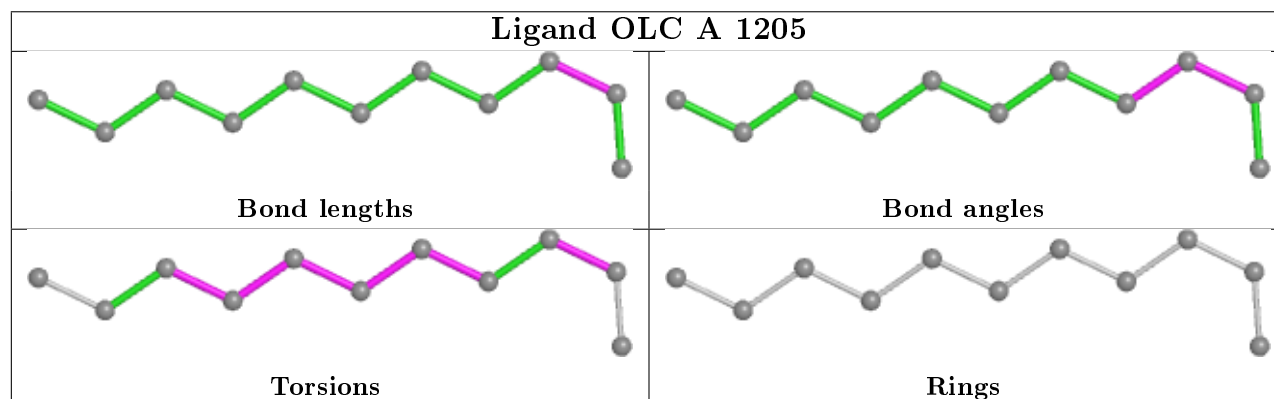
Continued from previous page...

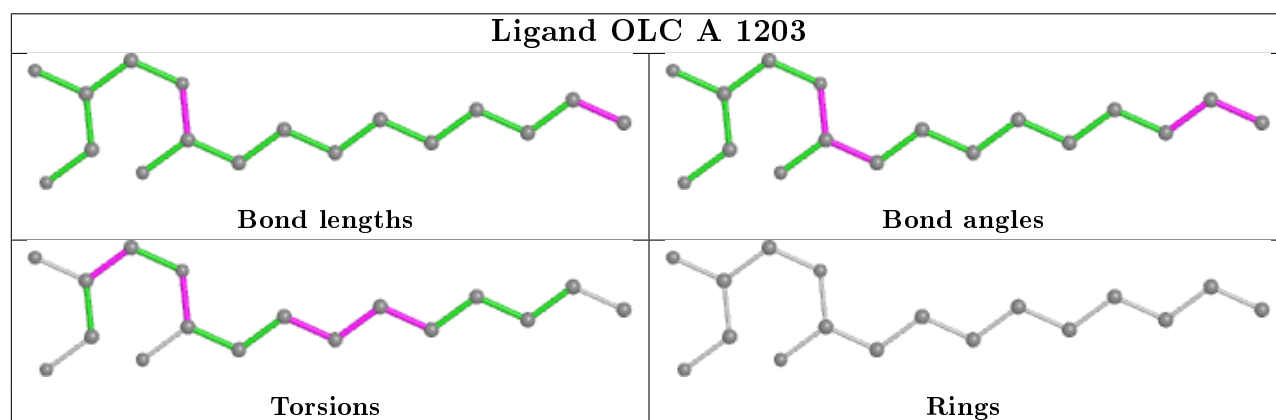
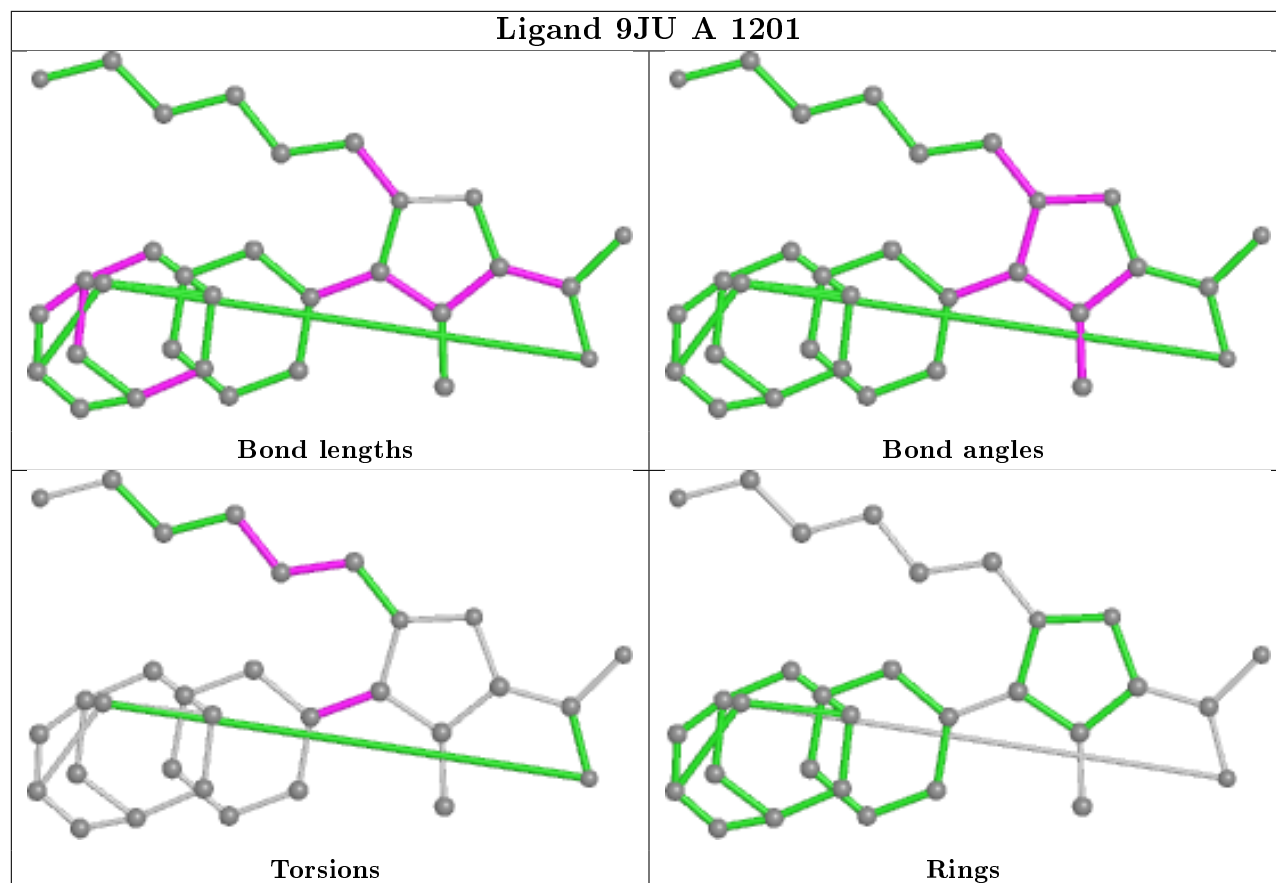
Mol	Chain	Res	Type	Atoms
6	A	1208	EPE	C9-C10-S-O2S
4	A	1203	OLC	O20-C21-C22-O23
4	A	1205	OLC	C4-C5-C6-C7
7	A	1210	PG4	O4-C7-C8-O5
3	A	1202	OLA	C9-C10-C11-C12
4	A	1204	OLC	O20-C1-C2-C3
4	A	1204	OLC	O19-C1-C2-C3

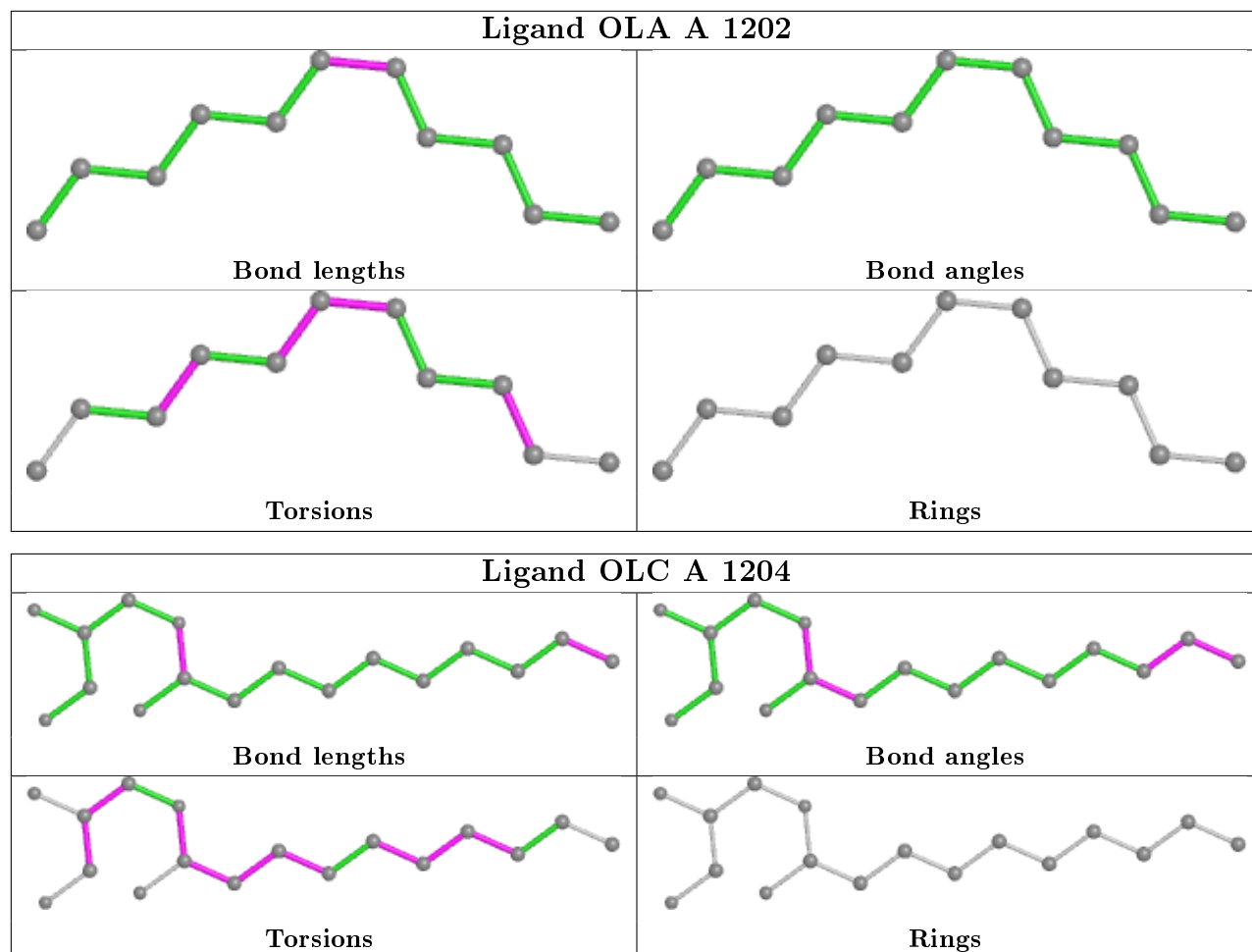
There are no ring outliers.

No monomer is involved in short contacts.

The following is a two-dimensional graphical depiction of Mogul quality analysis of bond lengths, bond angles, torsion angles, and ring geometry for all instances of the Ligand of Interest. In addition, ligands with molecular weight > 250 and outliers as shown on the validation Tables will also be included. For torsion angles, if less than 5% of the Mogul distribution of torsion angles is within 10 degrees of the torsion angle in question, then that torsion angle is considered an outlier. Any bond that is central to one or more torsion angles identified as an outlier by Mogul will be highlighted in the graph. For rings, the root-mean-square deviation (RMSD) between the ring in question and similar rings identified by Mogul is calculated over all ring torsion angles. If the average RMSD is greater than 60 degrees and the minimal RMSD between the ring in question and any Mogul-identified rings is also greater than 60 degrees, then that ring is considered an outlier. The outliers are highlighted in purple. The color gray indicates Mogul did not find sufficient equivalents in the CSD to analyse the geometry.







5.7 Other polymers [i](#)

There are no such residues in this entry.

5.8 Polymer linkage issues [i](#)

There are no chain breaks in this entry.

6 Fit of model and data ⓘ

6.1 Protein, DNA and RNA chains ⓘ

In the following table, the column labelled ‘#RSRZ> 2’ contains the number (and percentage) of RSRZ outliers, followed by percent RSRZ outliers for the chain as percentile scores relative to all X-ray entries and entries of similar resolution. The OWAB column contains the minimum, median, 95th percentile and maximum values of the occupancy-weighted average B-factor per residue. The column labelled ‘Q< 0.9’ lists the number of (and percentage) of residues with an average occupancy less than 0.9.

Mol	Chain	Analysed	<RSRZ>	#RSRZ>2	OWAB(Å ²)	Q<0.9
1	A	449/500 (89%)	0.19	28 (6%) 20 13	59, 91, 131, 226	0

All (28) RSRZ outliers are listed below:

Mol	Chain	Res	Type	RSRZ
1	A	317	TRP	13.3
1	A	318	LYS	6.7
1	A	31	PRO	5.6
1	A	34	THR	4.1
1	A	35	ALA	4.1
1	A	312	HIS	3.9
1	A	175	CYS	3.6
1	A	30	GLY	3.6
1	A	99	GLY	3.6
1	A	37	ALA	3.6
1	A	313	CYS	3.3
1	A	97	PHE	3.3
1	A	29	SER	3.3
1	A	176	PRO	3.1
1	A	1153	ARG	2.9
1	A	310	ALA	2.9
1	A	137	TYR	2.8
1	A	316	HIS	2.7
1	A	38	VAL	2.5
1	A	319	LYS	2.5
1	A	1139	ASN	2.5
1	A	33	LYS	2.4
1	A	1130	VAL	2.4
1	A	311[A]	HIS	2.2
1	A	314	LEU	2.1
1	A	1140	GLN	2.1
1	A	41	THR	2.0

Continued on next page...

Continued from previous page...

Mol	Chain	Res	Type	RSRZ
1	A	113	VAL	2.0

6.2 Non-standard residues in protein, DNA, RNA chains [i](#)

There are no non-standard protein/DNA/RNA residues in this entry.

6.3 Carbohydrates [i](#)

There are no monosaccharides in this entry.

6.4 Ligands [i](#)

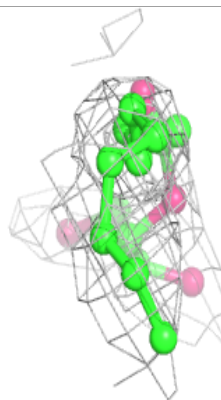
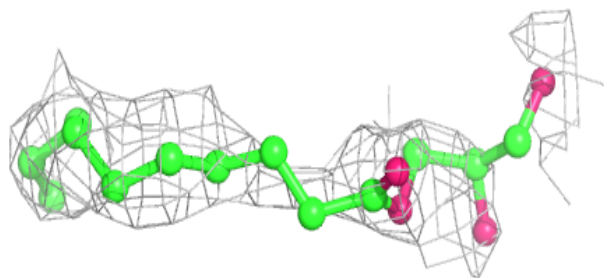
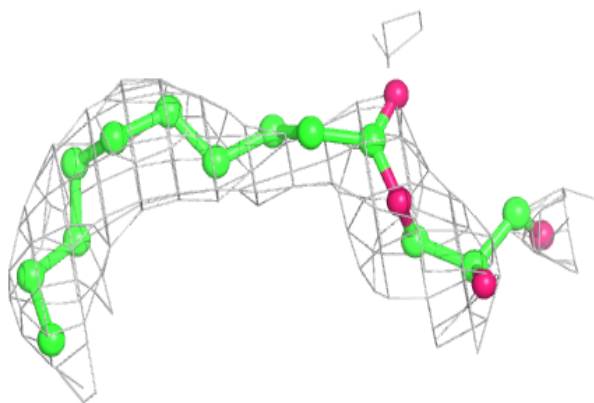
In the following table, the Atoms column lists the number of modelled atoms in the group and the number defined in the chemical component dictionary. The B-factors column lists the minimum, median, 95th percentile and maximum values of B factors of atoms in the group. The column labelled 'Q< 0.9' lists the number of atoms with occupancy less than 0.9.

Mol	Type	Chain	Res	Atoms	RSCC	RSR	B-factors(Å ²)	Q<0.9
6	EPE	A	1209	15/15	0.55	0.36	220,221,223,224	0
4	OLC	A	1204	17/25	0.58	0.34	128,131,134,135	0
3	OLA	A	1202	11/20	0.68	0.41	102,105,106,106	0
4	OLC	A	1203	17/25	0.70	0.33	111,116,120,120	0
8	SO4	A	1215	5/5	0.73	0.40	163,163,163,163	0
5	PEG	A	1206	7/7	0.74	0.44	86,86,87,87	0
5	PEG	A	1207	7/7	0.76	0.19	95,96,97,99	0
4	OLC	A	1205	11/25	0.78	0.24	95,96,97,98	0
7	PG4	A	1210	13/13	0.82	0.29	81,84,91,91	0
6	EPE	A	1208	15/15	0.85	0.18	120,126,127,127	0
8	SO4	A	1214	5/5	0.92	0.18	126,126,127,127	0
2	9JU	A	1201	31/31	0.93	0.34	80,82,86,88	0
8	SO4	A	1213	5/5	0.94	0.20	63,63,64,65	0
8	SO4	A	1212	5/5	0.95	0.10	105,105,106,106	0
8	SO4	A	1211	5/5	0.97	0.08	105,106,106,107	0

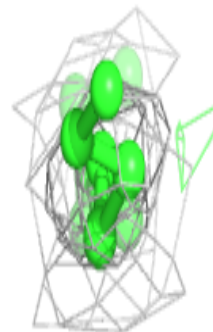
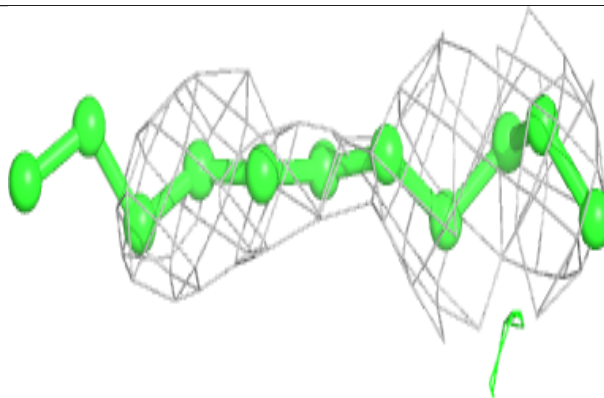
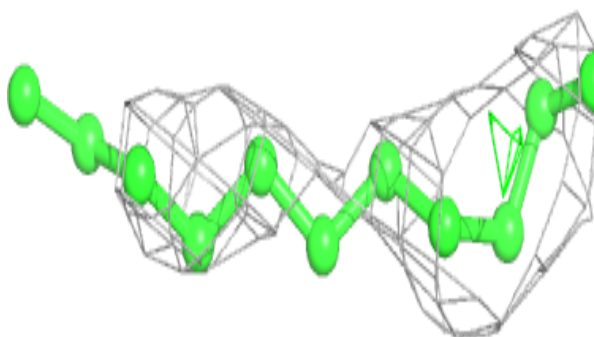
The following is a graphical depiction of the model fit to experimental electron density of all instances of the Ligand of Interest. In addition, ligands with molecular weight > 250 and outliers as shown on the geometry validation Tables will also be included. Each fit is shown from different orientation to approximate a three-dimensional view.

Electron density around OLC A 1204:

$2mF_o-DF_c$ (at 0.7 rmsd) in gray
 mF_o-DF_c (at 3 rmsd) in purple (negative)
and green (positive)

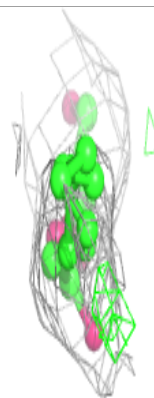
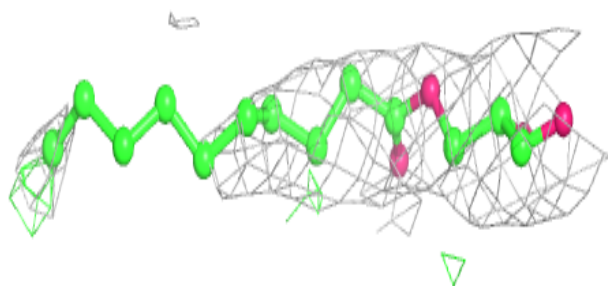
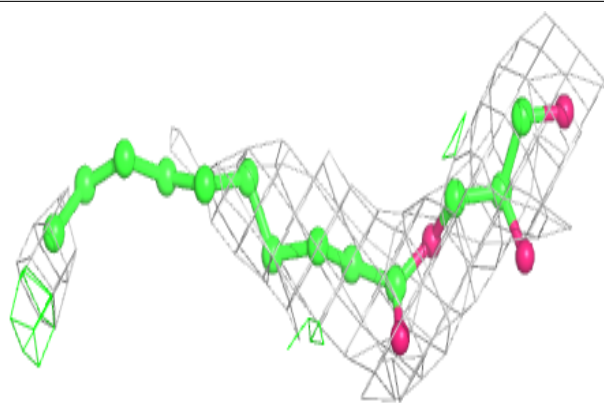
**Electron density around OLA A 1202:**

$2mF_o-DF_c$ (at 0.7 rmsd) in gray
 mF_o-DF_c (at 3 rmsd) in purple (negative)
and green (positive)

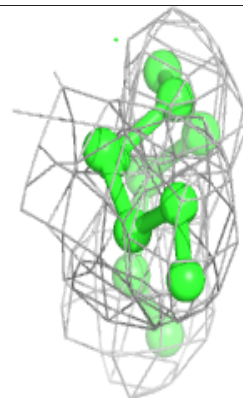
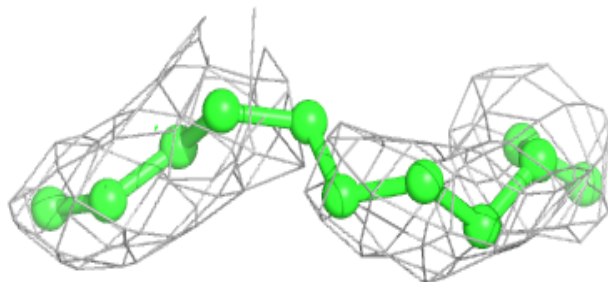
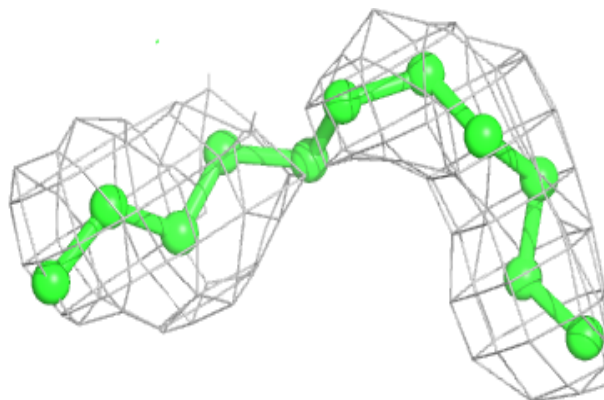


Electron density around OLC A 1203:

$2mF_o-DF_c$ (at 0.7 rmsd) in gray
 mF_o-DF_c (at 3 rmsd) in purple (negative)
and green (positive)

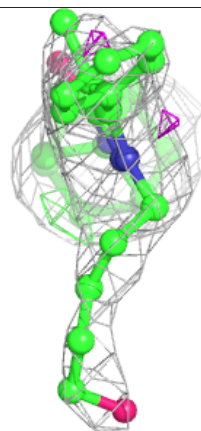
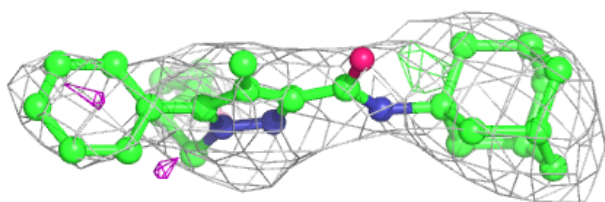
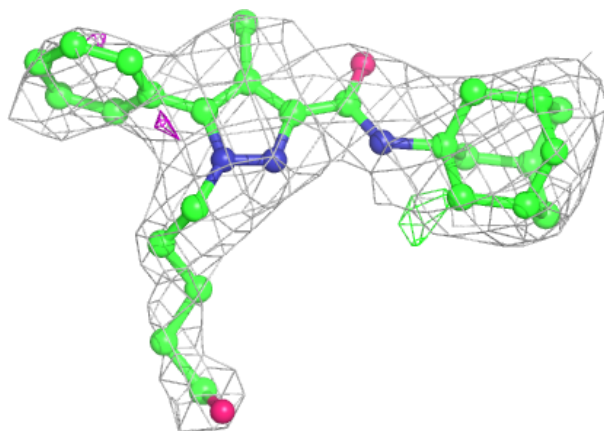
**Electron density around OLC A 1205:**

$2mF_o-DF_c$ (at 0.7 rmsd) in gray
 mF_o-DF_c (at 3 rmsd) in purple (negative)
and green (positive)



Electron density around 9JU A 1201:

$2mF_o-DF_c$ (at 0.7 rmsd) in gray
 mF_o-DF_c (at 3 rmsd) in purple (negative)
and green (positive)



6.5 Other polymers ⓘ

There are no such residues in this entry.