



# Full wwPDB X-ray Structure Validation Report ⓘ

May 14, 2020 – 02:35 am BST

PDB ID : 4ZWP  
Title : Crystal structure of organophosphate anhydrolase/prolidase mutant Y212F  
Authors : Daczkowski, C.M.; Pegan, S.D.; Harvey, S.P.  
Deposited on : 2015-05-19  
Resolution : 2.40 Å(reported)

This is a Full wwPDB X-ray Structure Validation Report for a publicly released PDB entry.

We welcome your comments at [validation@mail.wwpdb.org](mailto:validation@mail.wwpdb.org)

A user guide is available at

<https://www.wwpdb.org/validation/2017/XrayValidationReportHelp>

with specific help available everywhere you see the ⓘ symbol.

---

The following versions of software and data (see [references ⓘ](#)) were used in the production of this report:

MolProbity : 4.02b-467  
Mogul : 1.8.5 (274361), CSD as541be (2020)  
Xtriage (Phenix) : 1.13  
EDS : 2.11  
Percentile statistics : 20191225.v01 (using entries in the PDB archive December 25th 2019)  
Refmac : 5.8.0158  
CCP4 : 7.0.044 (Gargrove)  
Ideal geometry (proteins) : Engh & Huber (2001)  
Ideal geometry (DNA, RNA) : Parkinson et al. (1996)  
Validation Pipeline (wwPDB-VP) : 2.11

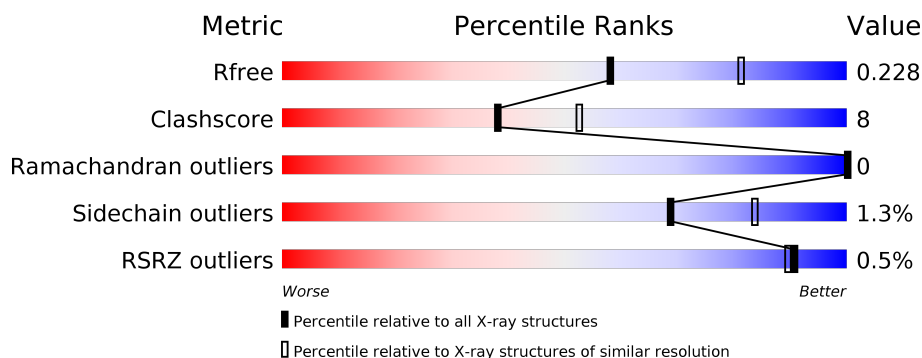
# 1 Overall quality at a glance

The following experimental techniques were used to determine the structure:

## *X-RAY DIFFRACTION*



The reported resolution of this entry is 2.40 Å.

Percentile scores (ranging between 0-100) for global validation metrics of the entry are shown in the following graphic. The table shows the number of entries on which the scores are based.



Metric	Whole archive (#Entries)	Similar resolution (#Entries, resolution range(Å))
$R_{free}$	130704	3907 (2.40-2.40)
Clashscore	141614	4398 (2.40-2.40)
Ramachandran outliers	138981	4318 (2.40-2.40)
Sidechain outliers	138945	4319 (2.40-2.40)
RSRZ outliers	127900	3811 (2.40-2.40)

The table below summarises the geometric issues observed across the polymeric chains and their fit to the electron density. The red, orange, yellow and green segments on the lower bar indicate the fraction of residues that contain outliers for  $\geq 3$ , 2, 1 and 0 types of geometric quality criteria respectively. A grey segment represents the fraction of residues that are not modelled. The numeric value for each fraction is indicated below the corresponding segment, with a dot representing fractions  $\leq 5\%$ . The upper red bar (where present) indicates the fraction of residues that have poor fit to the electron density. The numeric value is given above the bar.

Mol	Chain	Length	Quality of chain
1	A	440	 78% 18% •
1	B	440	 82% 15% •

## 2 Entry composition

There are 6 unique types of molecules in this entry. The entry contains 7338 atoms, of which 8 are hydrogens and 0 are deuteriums.

In the tables below, the ZeroOcc column contains the number of atoms modelled with zero occupancy, the AltConf column contains the number of residues with at least one atom in alternate conformation and the Trace column contains the number of residues modelled with at most 2 atoms.

- Molecule 1 is a protein called OPAA organophosphate prolidase anhydrolase.

Mol	Chain	Residues	Atoms					ZeroOcc	AltConf	Trace
1	A	422	Total	C	N	O	S	0	1	0
			3424	2195	583	633	13			
1	B	428	Total	C	N	O	S	0	4	0
			3491	2232	597	649	13			

There are 14 discrepancies between the modelled and reference sequences:

Chain	Residue	Modelled	Actual	Comment	Reference
A	210	THR	ASN	variant	UNP Q44238
A	211	PRO	ALA	variant	UNP Q44238
A	212	PHE	TYR	engineered mutation	UNP Q44238
A	314	ASN	ASP	variant	UNP Q44238
A	438	GLU	-	expression tag	UNP Q44238
A	439	LEU	-	expression tag	UNP Q44238
A	440	ASP	-	expression tag	UNP Q44238
B	210	THR	ASN	variant	UNP Q44238
B	211	PRO	ALA	variant	UNP Q44238
B	212	PHE	TYR	engineered mutation	UNP Q44238
B	314	ASN	ASP	variant	UNP Q44238
B	438	GLU	-	expression tag	UNP Q44238
B	439	LEU	-	expression tag	UNP Q44238
B	440	ASP	-	expression tag	UNP Q44238

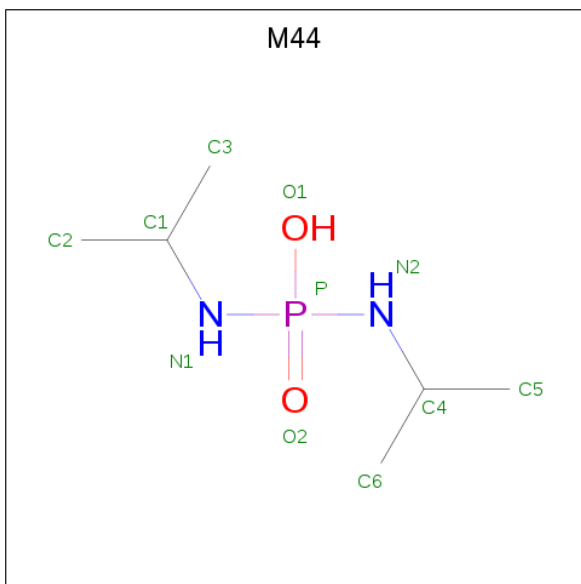
- Molecule 2 is MANGANESE (II) ION (three-letter code: MN) (formula: Mn).

Mol	Chain	Residues	Atoms		ZeroOcc	AltConf
2	B	3	Total	Mn	0	0
			3	3		
2	A	4	Total	Mn	0	0
			4	4		

- Molecule 3 is BARIUM ION (three-letter code: BA) (formula: Ba).

Mol	Chain	Residues	Atoms		ZeroOcc	AltConf
3	A	3	Total	Ba	0	0
			3	3		

- Molecule 4 is N,N'-bis(1-methylethyl)phosphorodiamidic acid (three-letter code: M44) (formula:  $C_6H_{17}N_2O_2P$ ).



Mol	Chain	Residues	Atoms					ZeroOcc	AltConf
4	A	1	Total	C	N	O	P	0	0
			11	6	2	2	1		
4	B	1	Total	C	N	O	P	0	0
			11	6	2	2	1		

- Molecule 5 is GLYCEROL (three-letter code: GOL) (formula:  $C_3H_8O_3$ ).



Mol	Chain	Residues	Atoms				ZeroOcc	AltConf
5	B	1	Total	C	H	O	0	0
			14	3	8	3		

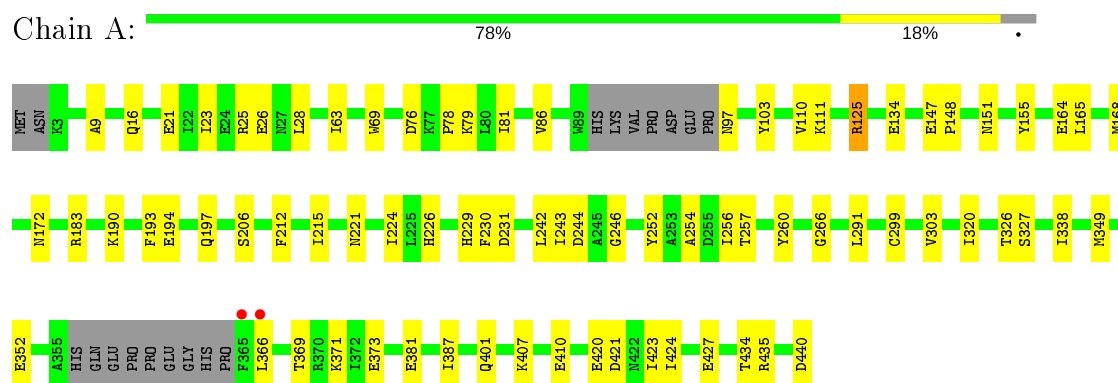
- Molecule 6 is water.

Mol	Chain	Residues	Atoms		ZeroOcc	AltConf
6	A	182	Total	O	0	0
			182	182		
6	B	195	Total	O	0	0
			195	195		

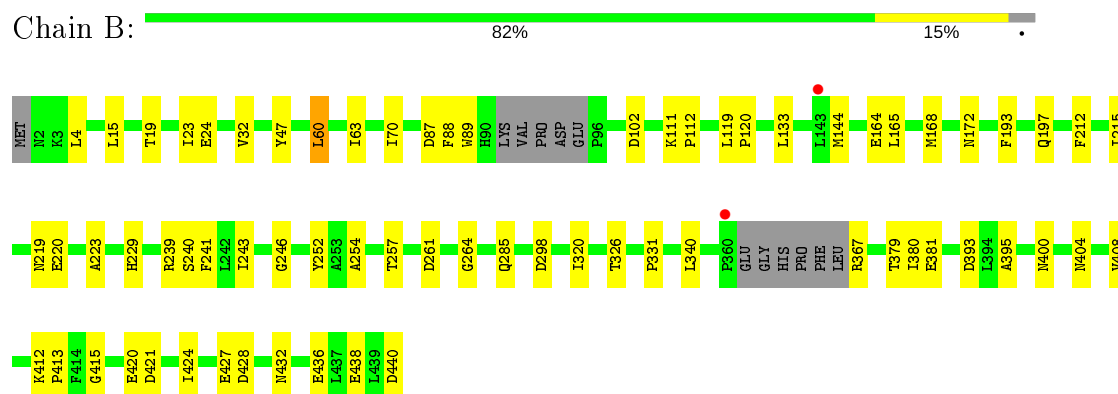
### 3 Residue-property plots

These plots are drawn for all protein, RNA and DNA chains in the entry. The first graphic for a chain summarises the proportions of the various outlier classes displayed in the second graphic. The second graphic shows the sequence view annotated by issues in geometry and electron density. Residues are color-coded according to the number of geometric quality criteria for which they contain at least one outlier: green = 0, yellow = 1, orange = 2 and red = 3 or more. A red dot above a residue indicates a poor fit to the electron density ( $RSRZ > 2$ ). Stretches of 2 or more consecutive residues without any outlier are shown as a green connector. Residues present in the sample, but not in the model, are shown in grey.

- Molecule 1: OPAA organophosphate prolidase anhydrolase



- Molecule 1: OPAA organophosphate prolidase anhydrolase



## 4 Data and refinement statistics

Property	Value	Source
Space group	C 1 2 1	Depositor
Cell constants a, b, c, $\alpha$ , $\beta$ , $\gamma$	104.49 Å   68.18 Å   142.48 Å 90.00°   110.50°   90.00°	Depositor
Resolution (Å)	48.94 – 2.40 48.94 – 2.40	Depositor EDS
% Data completeness (in resolution range)	94.7 (48.94-2.40) 92.4 (48.94-2.40)	Depositor EDS
$R_{merge}$	0.07	Depositor
$R_{sym}$	(Not available)	Depositor
$\langle I/\sigma(I) \rangle$ <sup>1</sup>	2.12 (at 2.39 Å)	Xtriage
Refinement program	PHENIX	Depositor
R, $R_{free}$	0.173 , 0.226 0.176 , 0.228	Depositor DCC
$R_{free}$ test set	1990 reflections (5.67%)	wwPDB-VP
Wilson B-factor (Å <sup>2</sup> )	32.7	Xtriage
Anisotropy	0.075	Xtriage
Bulk solvent $k_{sol}$ (e/Å <sup>3</sup> ), $B_{sol}$ (Å <sup>2</sup> )	0.29 , 38.1	EDS
L-test for twinning <sup>2</sup>	$\langle  L  \rangle = 0.47$ , $\langle L^2 \rangle = 0.30$	Xtriage
Estimated twinning fraction	0.025 for h,-k,-h-l	Xtriage
$F_o, F_c$ correlation	0.94	EDS
Total number of atoms	7338	wwPDB-VP
Average B, all atoms (Å <sup>2</sup> )	39.0	wwPDB-VP

Xtriage's analysis on translational NCS is as follows: *The largest off-origin peak in the Patterson function is 5.27% of the height of the origin peak. No significant pseudotranslation is detected.*

<sup>1</sup>Intensities estimated from amplitudes.

<sup>2</sup>Theoretical values of  $\langle |L| \rangle$ ,  $\langle L^2 \rangle$  for acentric reflections are 0.5, 0.333 respectively for untwinned datasets, and 0.375, 0.2 for perfectly twinned datasets.

## 5 Model quality

### 5.1 Standard geometry

Bond lengths and bond angles in the following residue types are not validated in this section: GOL, MN, BA, M44

The Z score for a bond length (or angle) is the number of standard deviations the observed value is removed from the expected value. A bond length (or angle) with  $|Z| > 5$  is considered an outlier worth inspection. RMSZ is the root-mean-square of all Z scores of the bond lengths (or angles).

Mol	Chain	Bond lengths		Bond angles	
		RMSZ	# Z  >5	RMSZ	# Z  >5
1	A	0.40	0/3513	0.49	0/4763
1	B	0.40	0/3590	0.50	0/4870
All	All	0.40	0/7103	0.50	0/9633

There are no bond length outliers.

There are no bond angle outliers.

There are no chirality outliers.

There are no planarity outliers.

### 5.2 Too-close contacts

In the following table, the Non-H and H(model) columns list the number of non-hydrogen atoms and hydrogen atoms in the chain respectively. The H(added) column lists the number of hydrogen atoms added and optimized by MolProbity. The Clashes column lists the number of clashes within the asymmetric unit, whereas Symm-Clashes lists symmetry related clashes.

Mol	Chain	Non-H	H(model)	H(added)	Clashes	Symm-Clashes
1	A	3424	0	3281	55	0
1	B	3491	0	3332	49	0
2	A	4	0	0	0	0
2	B	3	0	0	0	0
3	A	3	0	0	0	0
4	A	11	0	16	2	0
4	B	11	0	16	4	0
5	B	6	8	8	0	0
6	A	182	0	0	17	0
6	B	195	0	0	10	0
All	All	7330	8	6653	104	0



The all-atom clashscore is defined as the number of clashes found per 1000 atoms (including hydrogen atoms). The all-atom clashscore for this structure is 8.

All (104) close contacts within the same asymmetric unit are listed below, sorted by their clash magnitude.

Atom-1	Atom-2	Interatomic distance (Å)	Clash overlap (Å)
1:B:393:ASP:OD2	6:B:601:HOH:O	1.86	0.93
1:A:226:HIS:CD2	1:B:89:TRP:HB3	2.15	0.82
1:A:427:GLU:OE2	6:A:601:HOH:O	1.98	0.82
1:B:47:TYR:OH	6:B:602:HOH:O	1.98	0.79
1:B:331:PRO:O	6:B:603:HOH:O	2.01	0.78
1:A:86:VAL:O	6:A:602:HOH:O	2.04	0.76
1:B:298:ASP:OD1	6:B:604:HOH:O	2.03	0.75
1:B:285:GLN:NE2	6:B:606:HOH:O	2.19	0.75
1:B:212:PHE:CD2	4:B:504:M44:H5	2.22	0.75
1:A:212:PHE:CE2	4:A:508:M44:H3	2.21	0.74
1:A:387:ILE:HG21	1:B:88:PHE:HB2	1.72	0.72
1:A:401:GLN:OE1	6:A:606:HOH:O	2.13	0.66
1:A:440:ASP:O	6:A:605:HOH:O	2.13	0.66
1:A:352:GLU:OE2	6:A:607:HOH:O	2.13	0.66
1:A:76:ASP:O	6:A:608:HOH:O	2.14	0.65
1:A:183:ARG:HG3	1:A:260:TYR:CE1	2.31	0.65
1:B:440:ASP:OXT	6:B:605:HOH:O	2.14	0.65
4:B:504:M44:HN2	4:B:504:M44:H3A	1.62	0.65
1:B:381:GLU:HB3	1:B:420:GLU:HB2	1.78	0.64
1:A:226:HIS:ND1	6:A:616:HOH:O	2.28	0.64
1:A:266:GLY:N	6:A:615:HOH:O	2.28	0.62
1:B:63:ILE:HG12	6:B:668:HOH:O	2.01	0.61
1:A:165:LEU:HD22	1:A:424:ILE:HD13	1.82	0.61
1:A:155:TYR:HB2	1:A:349:MET:HE1	1.83	0.60
1:A:125:ARG:N	6:A:604:HOH:O	2.12	0.60
1:A:183:ARG:HG3	1:A:260:TYR:CZ	2.38	0.58
1:B:229[B]:HIS:ND1	6:B:614:HOH:O	2.32	0.58
1:B:164:GLU:HG2	1:B:252:TYR:OH	2.04	0.56
1:B:404:ASN:O	1:B:408:VAL:HG23	2.05	0.56
1:B:193:PHE:O	1:B:197:GLN:HG2	2.06	0.56
1:B:23:ILE:HG13	1:B:24:GLU:N	2.20	0.56
1:A:373:GLU:OE1	6:A:610:HOH:O	2.18	0.55
1:B:164:GLU:HG2	1:B:252:TYR:CZ	2.41	0.55
1:A:21:GLU:OE2	1:A:25:ARG:NH2	2.41	0.54
1:B:19:THR:O	1:B:23:ILE:HG23	2.08	0.54
1:A:206:SER:HA	6:A:705:HOH:O	2.08	0.54
1:B:212:PHE:CE2	4:B:504:M44:H5	2.42	0.54

*Continued on next page...*

*Continued from previous page...*

Atom-1	Atom-2	Interatomic distance (Å)	Clash overlap (Å)
1:A:164:GLU:HG2	1:A:252:TYR:OH	2.08	0.53
1:A:221:ASN:HA	1:A:224:ILE:HD12	1.88	0.53
1:B:432:ASN:O	1:B:436:GLU:HG3	2.09	0.53
1:A:110:VAL:HG13	1:A:111:LYS:HG2	1.91	0.53
1:A:63:ILE:O	6:A:609:HOH:O	2.18	0.53
1:B:220:GLU:OE2	1:B:239:ARG:NH2	2.42	0.52
1:A:69:TRP:HB2	1:A:81:ILE:HB	1.91	0.52
1:B:395:ALA:HA	1:B:400:ASN:OD1	2.09	0.52
1:A:231:ASP:HA	6:A:642:HOH:O	2.10	0.52
1:A:256:ILE:HD13	1:A:434:THR:HG23	1.91	0.52
1:B:119:LEU:HB3	1:B:120:PRO:HD2	1.90	0.52
1:A:407:LYS:HE2	1:A:410:GLU:OE1	2.11	0.51
1:B:32:VAL:HA	1:B:70:ILE:O	2.11	0.50
1:A:291:LEU:HD23	1:A:371:LYS:HG3	1.93	0.50
1:B:438:GLU:HA	6:B:632:HOH:O	2.12	0.49
1:B:60:LEU:HD12	1:B:60:LEU:N	2.27	0.49
4:B:504:M44:N2	4:B:504:M44:H3A	2.26	0.49
1:A:212:PHE:CE1	4:A:508:M44:H2	2.48	0.48
1:B:241:PHE:CZ	1:B:243:ILE:HB	2.48	0.48
1:B:257:THR:HB	1:B:420:GLU:HB3	1.95	0.48
1:A:421:ASP:OD2	1:A:435:ARG:NE	2.47	0.48
1:A:242:LEU:C	1:A:242:LEU:HD23	2.34	0.48
1:A:193:PHE:O	1:A:197:GLN:HG2	2.13	0.48
1:B:102:ASP:N	1:B:102:ASP:OD1	2.40	0.48
1:B:164:GLU:O	1:B:168:MET:HG3	2.14	0.47
1:A:147:GLU:HB3	1:A:148:PRO:HD3	1.96	0.47
1:A:320:ILE:HG22	1:A:326:THR:HG23	1.97	0.47
1:B:380:ILE:O	1:B:420:GLU:HA	2.15	0.47
1:A:299:CYS:O	1:A:303:VAL:HG23	2.15	0.46
1:B:261:ASP:OD1	1:B:264:GLY:N	2.41	0.46
1:B:133:LEU:HD22	1:B:144:MET:HB3	1.98	0.46
1:A:16:GLN:NE2	1:A:78:PRO:HD3	2.31	0.46
1:A:320:ILE:HG22	1:A:326:THR:CG2	2.46	0.46
1:A:423:ILE:N	1:A:423:ILE:HD12	2.31	0.45
1:A:381:GLU:HB3	1:A:420:GLU:HB2	1.98	0.45
1:B:165:LEU:HD22	1:B:424:ILE:HD13	1.98	0.45
1:A:168:MET:HE1	1:A:338:ILE:HG23	1.99	0.45
1:A:147:GLU:HG2	1:A:151:ASN:ND2	2.32	0.45
1:A:352:GLU:HG3	6:A:716:HOH:O	2.16	0.45
1:A:366:LEU:HD23	1:A:369:THR:HG22	1.99	0.44
1:A:229[A]:HIS:CG	1:A:230:PHE:N	2.85	0.43

*Continued on next page...*

*Continued from previous page...*

Atom-1	Atom-2	Interatomic distance (Å)	Clash overlap (Å)
1:B:119:LEU:HB3	1:B:120:PRO:CD	2.48	0.43
1:A:215:ILE:HB	1:A:244:ASP:HB3	2.00	0.43
1:A:134:GLU:N	1:A:134:GLU:OE1	2.51	0.43
1:B:246:GLY:HA3	1:B:254:ALA:O	2.19	0.43
1:A:401:GLN:HG2	6:A:603:HOH:O	2.17	0.43
1:B:320:ILE:HG22	1:B:326:THR:HG22	2.01	0.43
1:B:87:ASP:OD1	1:B:89:TRP:HB2	2.18	0.43
1:A:26:GLU:OE1	6:A:611:HOH:O	2.21	0.42
1:A:190:LYS:HB3	1:A:194:GLU:HB2	2.01	0.42
1:B:412:LYS:N	1:B:413:PRO:CD	2.83	0.42
1:B:427:GLU:HG3	1:B:428[B]:ASP:N	2.35	0.42
1:B:215:ILE:O	1:B:243:ILE:HA	2.20	0.42
1:A:246:GLY:HA3	1:A:254:ALA:O	2.20	0.42
1:B:367:ARG:HB2	1:B:367:ARG:HE	1.69	0.42
1:A:28:LEU:HA	1:A:125:ARG:HG2	2.01	0.42
1:B:223:ALA:HB2	1:B:415:GLY:O	2.19	0.42
1:B:15:LEU:HA	1:B:15:LEU:HD23	1.83	0.41
1:B:379:THR:HA	1:B:421:ASP:O	2.20	0.41
1:B:219:ASN:HA	1:B:240:SER:OG	2.21	0.41
1:B:367:ARG:HB3	6:B:634:HOH:O	2.21	0.41
1:A:9:ALA:HB2	1:A:103:TYR:OH	2.21	0.41
1:A:243:ILE:O	1:A:257:THR:HA	2.20	0.41
1:A:349:MET:HB3	1:A:349:MET:HE2	1.91	0.40
1:B:111:LYS:HA	1:B:112:PRO:HD3	1.89	0.40
1:B:252:TYR:CE2	1:B:340:LEU:HG	2.56	0.40
1:A:183:ARG:NH2	6:A:631:HOH:O	2.50	0.40

There are no symmetry-related clashes.

## 5.3 Torsion angles

### 5.3.1 Protein backbone

In the following table, the Percentiles column shows the percent Ramachandran outliers of the chain as a percentile score with respect to all X-ray entries followed by that with respect to entries of similar resolution.

The Analysed column shows the number of residues for which the backbone conformation was analysed, and the total number of residues.

Mol	Chain	Analysed	Favoured	Allowed	Outliers	Percentiles	
1	A	417/440 (95%)	410 (98%)	7 (2%)	0	100	100
1	B	426/440 (97%)	418 (98%)	8 (2%)	0	100	100
All	All	843/880 (96%)	828 (98%)	15 (2%)	0	100	100

There are no Ramachandran outliers to report.

### 5.3.2 Protein sidechains ⓘ

In the following table, the Percentiles column shows the percent sidechain outliers of the chain as a percentile score with respect to all X-ray entries followed by that with respect to entries of similar resolution.

The Analysed column shows the number of residues for which the sidechain conformation was analysed, and the total number of residues.

Mol	Chain	Analysed	Rotameric	Outliers	Percentiles	
1	A	357/373 (96%)	351 (98%)	6 (2%)	60	78
1	B	366/373 (98%)	363 (99%)	3 (1%)	81	91
All	All	723/746 (97%)	714 (99%)	9 (1%)	69	85

All (9) residues with a non-rotameric sidechain are listed below:

Mol	Chain	Res	Type
1	A	23	ILE
1	A	79	LYS
1	A	97	ASN
1	A	125	ARG
1	A	172	ASN
1	A	327	SER
1	B	4	LEU
1	B	60	LEU
1	B	172	ASN

Some sidechains can be flipped to improve hydrogen bonding and reduce clashes. There are no such sidechains identified.

### 5.3.3 RNA ⓘ

There are no RNA molecules in this entry.

## 5.4 Non-standard residues in protein, DNA, RNA chains [i](#)

There are no non-standard protein/DNA/RNA residues in this entry.

## 5.5 Carbohydrates [i](#)

There are no carbohydrates in this entry.

## 5.6 Ligand geometry [i](#)

Of 13 ligands modelled in this entry, 10 are monoatomic - leaving 3 for Mogul analysis.

In the following table, the Counts columns list the number of bonds (or angles) for which Mogul statistics could be retrieved, the number of bonds (or angles) that are observed in the model and the number of bonds (or angles) that are defined in the Chemical Component Dictionary. The Link column lists molecule types, if any, to which the group is linked. The Z score for a bond length (or angle) is the number of standard deviations the observed value is removed from the expected value. A bond length (or angle) with  $|Z| > 2$  is considered an outlier worth inspection. RMSZ is the root-mean-square of all Z scores of the bond lengths (or angles).

Mol	Type	Chain	Res	Link	Bond lengths			Bond angles		
					Counts	RMSZ	$\# Z  > 2$	Counts	RMSZ	$\# Z  > 2$
4	M44	B	504	2	7,10,10	3.36	2 (28%)	6,14,14	0.90	0
5	GOL	B	505	-	5,5,5	0.48	0	5,5,5	0.69	0
4	M44	A	508	2	7,10,10	3.45	3 (42%)	6,14,14	1.12	1 (16%)

In the following table, the Chirals column lists the number of chiral outliers, the number of chiral centers analysed, the number of these observed in the model and the number defined in the Chemical Component Dictionary. Similar counts are reported in the Torsion and Rings columns. '-' means no outliers of that kind were identified.

Mol	Type	Chain	Res	Link	Chirals	Torsions	Rings
4	M44	B	504	2	-	3/8/10/10	-
5	GOL	B	505	-	-	0/4/4/4	-
4	M44	A	508	2	-	0/8/10/10	-

All (5) bond length outliers are listed below:

Mol	Chain	Res	Type	Atoms	Z	Observed(Å)	Ideal(Å)
4	A	508	M44	P-O2	8.48	1.60	1.46
4	B	504	M44	P-O2	8.35	1.60	1.46
4	B	504	M44	C4-N2	-2.07	1.44	1.47
4	A	508	M44	C1-N1	-2.06	1.44	1.47

*Continued on next page...*

*Continued from previous page...*

Mol	Chain	Res	Type	Atoms	Z	Observed(Å)	Ideal(Å)
4	A	508	M44	C4-N2	-2.01	1.44	1.47

All (1) bond angle outliers are listed below:

Mol	Chain	Res	Type	Atoms	Z	Observed(°)	Ideal(°)
4	A	508	M44	C3-C1-N1	-2.06	106.87	110.33

There are no chirality outliers.

All (3) torsion outliers are listed below:

Mol	Chain	Res	Type	Atoms
4	B	504	M44	C4-N2-P-N1
4	B	504	M44	C5-C4-N2-P
4	B	504	M44	C6-C4-N2-P

There are no ring outliers.

2 monomers are involved in 6 short contacts:

Mol	Chain	Res	Type	Clashes	Symm-Clashes
4	B	504	M44	4	0
4	A	508	M44	2	0

## 5.7 Other polymers [i](#)

There are no such residues in this entry.

## 5.8 Polymer linkage issues [i](#)

There are no chain breaks in this entry.

## 6 Fit of model and data [i](#)

### 6.1 Protein, DNA and RNA chains [i](#)

In the following table, the column labelled ‘#RSRZ> 2’ contains the number (and percentage) of RSRZ outliers, followed by percent RSRZ outliers for the chain as percentile scores relative to all X-ray entries and entries of similar resolution. The OWAB column contains the minimum, median, 95<sup>th</sup> percentile and maximum values of the occupancy-weighted average B-factor per residue. The column labelled ‘Q< 0.9’ lists the number of (and percentage) of residues with an average occupancy less than 0.9.

Mol	Chain	Analysed	<RSRZ>	#RSRZ>2	OWAB(Å <sup>2</sup> )	Q<0.9
1	A	422/440 (95%)	-0.12	2 (0%) 91 89	22, 36, 61, 76	0
1	B	428/440 (97%)	-0.13	2 (0%) 91 89	21, 35, 64, 87	0
All	All	850/880 (96%)	-0.12	4 (0%) 91 89	21, 36, 63, 87	0

All (4) RSRZ outliers are listed below:

Mol	Chain	Res	Type	RSRZ
1	B	360	PRO	2.6
1	B	143	LEU	2.3
1	A	365	PHE	2.2
1	A	366	LEU	2.1

### 6.2 Non-standard residues in protein, DNA, RNA chains [i](#)

There are no non-standard protein/DNA/RNA residues in this entry.

### 6.3 Carbohydrates [i](#)

There are no carbohydrates in this entry.

### 6.4 Ligands [i](#)

In the following table, the Atoms column lists the number of modelled atoms in the group and the number defined in the chemical component dictionary. The B-factors column lists the minimum, median, 95<sup>th</sup> percentile and maximum values of B factors of atoms in the group. The column labelled ‘Q< 0.9’ lists the number of atoms with occupancy less than 0.9.

Mol	Type	Chain	Res	Atoms	RSCC	RSR	B-factors(Å <sup>2</sup> )	Q<0.9
3	BA	A	503	1/1	0.03	0.11	163,163,163,163	1

*Continued on next page...*

*Continued from previous page...*

Mol	Type	Chain	Res	Atoms	RSCC	RSR	B-factors( $\text{\AA}^2$ )	Q<0.9
5	GOL	B	505	6/6	0.89	0.16	45,54,57,58	0
3	BA	A	506	1/1	0.90	0.12	110,110,110,110	0
3	BA	A	507	1/1	0.91	0.09	156,156,156,156	0
4	M44	B	504	11/11	0.94	0.19	31,53,75,79	0
4	M44	A	508	11/11	0.94	0.19	38,43,80,81	0
2	MN	A	504	1/1	0.97	0.08	45,45,45,45	0
2	MN	A	505	1/1	0.99	0.08	34,34,34,34	0
2	MN	B	503	1/1	0.99	0.12	46,46,46,46	0
2	MN	A	502	1/1	0.99	0.13	29,29,29,29	0
2	MN	A	501	1/1	1.00	0.13	27,27,27,27	0
2	MN	B	501	1/1	1.00	0.11	26,26,26,26	0
2	MN	B	502	1/1	1.00	0.13	28,28,28,28	0

## 6.5 Other polymers [i](#)

There are no such residues in this entry.