



Full wwPDB X-ray Structure Validation Report ⓘ

Dec 17, 2020 – 03:06 pm GMT

PDB ID : 6ZWC
Title : Z-SBTub2 photoswitch bound to tubulin-DARPin D1 complex
Authors : Wranik, M.; Weinert, T.; Olieric, N.; Gao, L.; Kraus, Y.C.M.; Bingham, R.;
Ntoulou, E.; Ahlfeld, J.; Thorn-Seshold, O.; Steinmetz, M.O.; Standfuss, J.
Deposited on : 2020-07-28
Resolution : 2.04 Å(reported)

This is a Full wwPDB X-ray Structure Validation Report for a publicly released PDB entry.

We welcome your comments at validation@mail.wwpdb.org

A user guide is available at

<https://www.wwpdb.org/validation/2017/XrayValidationReportHelp>

with specific help available everywhere you see the ⓘ symbol.

The following versions of software and data (see [references ⓘ](#)) were used in the production of this report:

MolProbity : 4.02b-467
Mogul : 1.8.5 (274361), CSD as541be (2020)
Xtriage (Phenix) : 1.13
EDS : 2.15.1
buster-report : 1.1.7 (2018)
Percentile statistics : 20191225.v01 (using entries in the PDB archive December 25th 2019)
Refmac : 5.8.0158
CCP4 : 7.0.044 (Gargrove)
Ideal geometry (proteins) : Engh & Huber (2001)
Ideal geometry (DNA, RNA) : Parkinson et al. (1996)
Validation Pipeline (wwPDB-VP) : 2.15.1

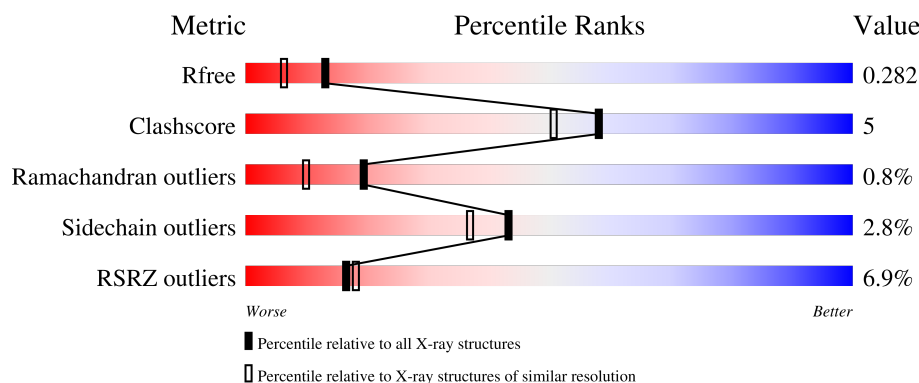
1 Overall quality at a glance

The following experimental techniques were used to determine the structure:

X-RAY DIFFRACTION

The reported resolution of this entry is 2.04 Å.

Percentile scores (ranging between 0-100) for global validation metrics of the entry are shown in the following graphic. The table shows the number of entries on which the scores are based.



Metric	Whole archive (#Entries)	Similar resolution (#Entries, resolution range(Å))
R_{free}	130704	1692 (2.04-2.04)
Clashscore	141614	1773 (2.04-2.04)
Ramachandran outliers	138981	1752 (2.04-2.04)
Sidechain outliers	138945	1752 (2.04-2.04)
RSRZ outliers	127900	1672 (2.04-2.04)

The table below summarises the geometric issues observed across the polymeric chains and their fit to the electron density. The red, orange, yellow and green segments of the lower bar indicate the fraction of residues that contain outliers for ≥ 3 , 2, 1 and 0 types of geometric quality criteria respectively. A grey segment represents the fraction of residues that are not modelled. The numeric value for each fraction is indicated below the corresponding segment, with a dot representing fractions $\leq 5\%$. The upper red bar (where present) indicates the fraction of residues that have poor fit to the electron density. The numeric value is given above the bar.

Mol	Chain	Length	Quality of chain
1	A	451	 5% 85% 10% . .
2	B	445	 10% 79% 17% . .
3	F	169	 % 85% 5% . 8%

2 Entry composition [i](#)

There are 8 unique types of molecules in this entry. The entry contains 8235 atoms, of which 0 are hydrogens and 0 are deuteriums.

In the tables below, the ZeroOcc column contains the number of atoms modelled with zero occupancy, the AltConf column contains the number of residues with at least one atom in alternate conformation and the Trace column contains the number of residues modelled with at most 2 atoms.

- Molecule 1 is a protein called Tubulin alpha-1B chain.

Mol	Chain	Residues	Atoms					ZeroOcc	AltConf	Trace
1	A	436	Total	C	N	O	S	1	6	0
			3398	2154	580	641	23			

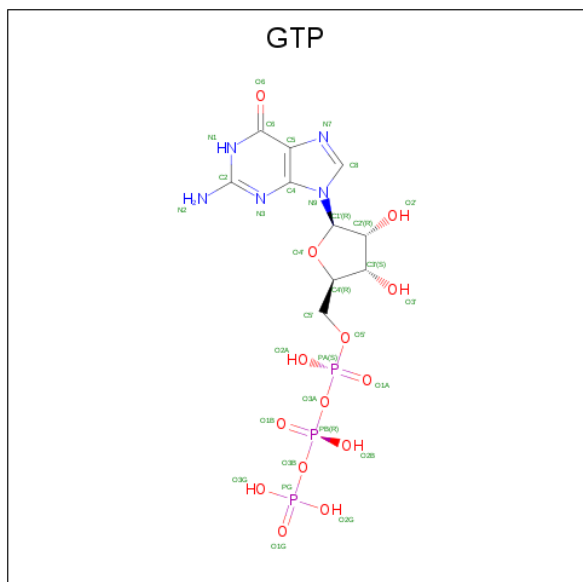
- Molecule 2 is a protein called Tubulin beta-2B chain.

Mol	Chain	Residues	Atoms					ZeroOcc	AltConf	Trace
2	B	431	Total	C	N	O	S	0	4	0
			3362	2116	570	648	28			

- Molecule 3 is a protein called Designed Ankyrin Repeat Protein (DARPIN) D1.

Mol	Chain	Residues	Atoms					ZeroOcc	AltConf	Trace
3	F	155	Total	C	N	O	S	0	2	0
			1158	731	195	229	3			

- Molecule 4 is GUANOSINE-5'-TRIPHOSPHATE (three-letter code: GTP) (formula: $C_{10}H_{16}N_5O_{14}P_3$).

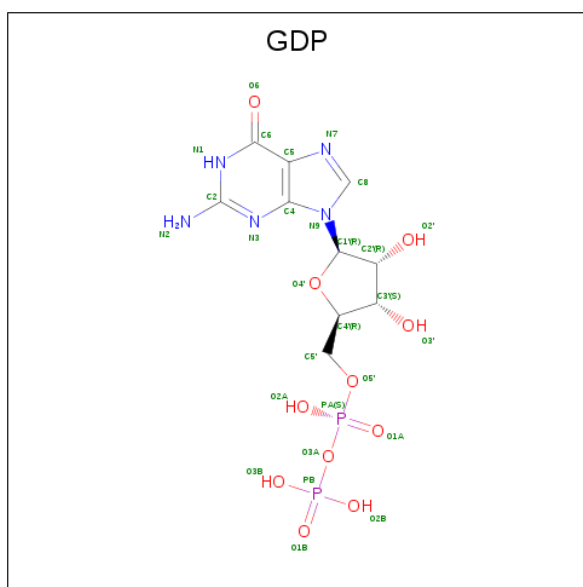


Mol	Chain	Residues	Atoms					ZeroOcc	AltConf
4	A	1	Total	C	N	O	P	0	0
			32	10	5	14	3		

- Molecule 5 is MAGNESIUM ION (three-letter code: MG) (formula: Mg).

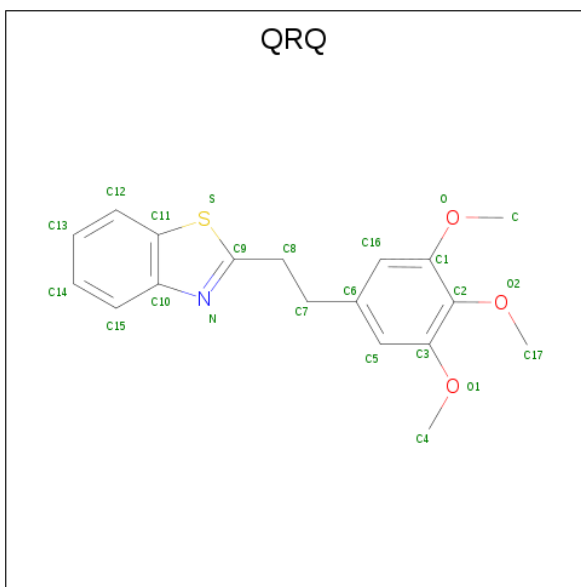
Mol	Chain	Residues	Atoms		ZeroOcc	AltConf
5	A	1	Total	Mg	0	0
			1	1		

- Molecule 6 is GUANOSINE-5'-DIPHOSPHATE (three-letter code: GDP) (formula: $C_{10}H_{15}N_5O_{11}P_2$).



Mol	Chain	Residues	Atoms					ZeroOcc	AltConf
6	B	1	Total	C	N	O	P	0	0
			28	10	5	11	2		

- Molecule 7 is 2-[2-(3,4,5-trimethoxyphenyl)ethyl]-1,3-benzothiazole (three-letter code: QRQ) (formula: $C_{18}H_{19}NO_3S$) (labeled as "Ligand of Interest" by depositor).



Mol	Chain	Residues	Atoms					ZeroOcc	AltConf
7	B	1	Total	C	N	O	S	0	1
			23	18	1	3	1		

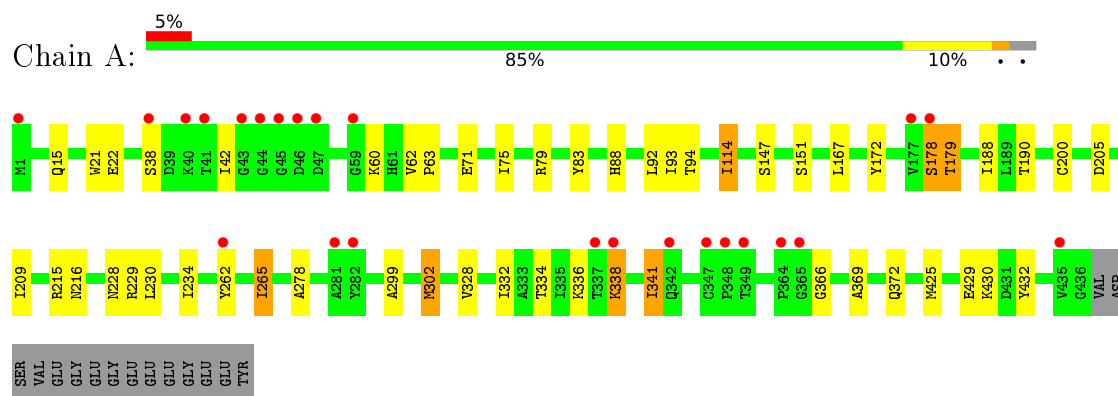
- Molecule 8 is water.

Mol	Chain	Residues	Atoms		ZeroOcc	AltConf
8	A	109	Total	O	0	0
			109	109		
8	B	83	Total	O	0	0
			83	83		
8	F	41	Total	O	0	0
			41	41		

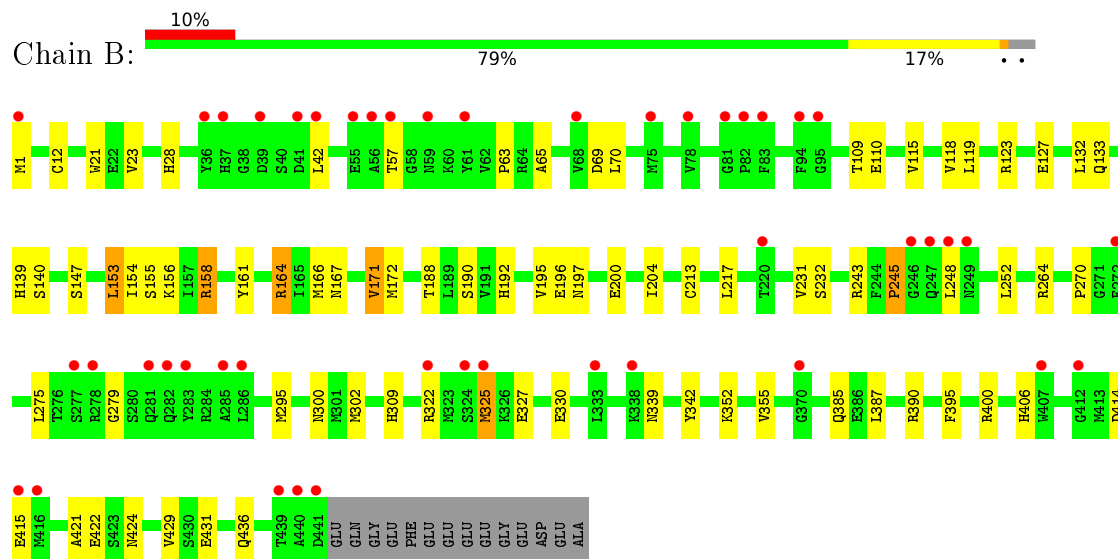
3 Residue-property plots

These plots are drawn for all protein, RNA, DNA and oligosaccharide chains in the entry. The first graphic for a chain summarises the proportions of the various outlier classes displayed in the second graphic. The second graphic shows the sequence view annotated by issues in geometry and electron density. Residues are color-coded according to the number of geometric quality criteria for which they contain at least one outlier: green = 0, yellow = 1, orange = 2 and red = 3 or more. A red dot above a residue indicates a poor fit to the electron density ($RSRZ > 2$). Stretches of 2 or more consecutive residues without any outlier are shown as a green connector. Residues present in the sample, but not in the model, are shown in grey.

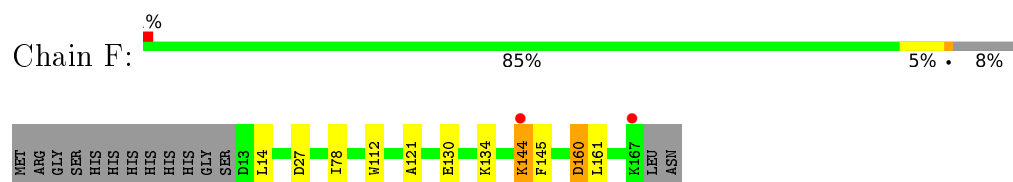
• Molecule 1: Tubulin alpha-1B chain



• Molecule 2: Tubulin beta-2B chain



• Molecule 3: Designed Ankyrin Repeat Protein (DARPIN) D1



4 Data and refinement statistics

Property	Value	Source
Space group	P 1 21 1	Depositor
Cell constants a, b, c, α , β , γ	73.90Å 91.85Å 82.81Å 90.00° 96.58° 90.00°	Depositor
Resolution (Å)	45.19 – 2.04 45.18 – 2.04	Depositor EDS
% Data completeness (in resolution range)	58.4 (45.19-2.04) 58.6 (45.18-2.04)	Depositor EDS
R_{merge}	0.13	Depositor
R_{sym}	(Not available)	Depositor
$\langle I/\sigma(I) \rangle$ ¹	1.57 (at 2.05Å)	Xtriage
Refinement program	PHENIX 1.18	Depositor
R, R_{free}	0.225 , 0.281 0.226 , 0.282	Depositor DCC
R_{free} test set	1207 reflections (2.94%)	wwPDB-VP
Wilson B-factor (Å ²)	26.7	Xtriage
Anisotropy	0.063	Xtriage
Bulk solvent k_{sol} (e/Å ³), B_{sol} (Å ²)	0.30 , 33.3	EDS
L-test for twinning ²	$\langle L \rangle = 0.51$, $\langle L^2 \rangle = 0.35$	Xtriage
Estimated twinning fraction	No twinning to report.	Xtriage
F_o, F_c correlation	0.87	EDS
Total number of atoms	8235	wwPDB-VP
Average B, all atoms (Å ²)	32.0	wwPDB-VP

Xtriage's analysis on translational NCS is as follows: *The largest off-origin peak in the Patterson function is 4.48% of the height of the origin peak. No significant pseudotranslation is detected.*

¹ Intensities estimated from amplitudes.

² Theoretical values of $\langle |L| \rangle$, $\langle L^2 \rangle$ for acentric reflections are 0.5, 0.333 respectively for untwinned datasets, and 0.375, 0.2 for perfectly twinned datasets.

5 Model quality [i](#)

5.1 Standard geometry [i](#)

Bond lengths and bond angles in the following residue types are not validated in this section: GDP, GTP, MG, QRQ

The Z score for a bond length (or angle) is the number of standard deviations the observed value is removed from the expected value. A bond length (or angle) with $|Z| > 5$ is considered an outlier worth inspection. RMSZ is the root-mean-square of all Z scores of the bond lengths (or angles).

Mol	Chain	Bond lengths		Bond angles	
		RMSZ	# $ Z > 5$	RMSZ	# $ Z > 5$
1	A	0.25	0/3491	0.41	0/4744
2	B	0.24	0/3448	0.41	0/4674
3	F	0.23	0/1180	0.39	0/1604
All	All	0.24	0/8119	0.41	0/11022

There are no bond length outliers.

There are no bond angle outliers.

There are no chirality outliers.

There are no planarity outliers.

5.2 Too-close contacts [i](#)

In the following table, the Non-H and H(model) columns list the number of non-hydrogen atoms and hydrogen atoms in the chain respectively. The H(added) column lists the number of hydrogen atoms added and optimized by MolProbity. The Clashes column lists the number of clashes within the asymmetric unit, whereas Symm-Clashes lists symmetry-related clashes.

Mol	Chain	Non-H	H(model)	H(added)	Clashes	Symm-Clashes
1	A	3398	0	3291	28	0
2	B	3362	0	3225	41	0
3	F	1158	0	1156	8	0
4	A	32	0	12	2	0
5	A	1	0	0	0	0
6	B	28	0	12	1	0
7	B	23	0	0	1	0
8	A	109	0	0	2	0
8	B	83	0	0	2	0
8	F	41	0	0	0	0
All	All	8235	0	7696	76	0

The all-atom clashscore is defined as the number of clashes found per 1000 atoms (including hydrogen atoms). The all-atom clashscore for this structure is 5.

All (76) close contacts within the same asymmetric unit are listed below, sorted by their clash magnitude.

Atom-1	Atom-2	Interatomic distance (Å)	Clash overlap (Å)
2:B:1:MET:HB3	2:B:133:GLN:HB3	1.68	0.76
1:A:172:TYR:HB3	1:A:205:ASP:HA	1.76	0.66
1:A:336:LYS:HA	1:A:341:ILE:HD11	1.79	0.65
2:B:195:VAL:HG21	2:B:424:ASN:HD21	1.62	0.65
2:B:132:LEU:O	2:B:164:ARG:NH1	2.33	0.61
1:A:215:ARG:NH1	1:A:216:ASN:OD1	2.35	0.60
1:A:372:GLN:NE2	8:A:604:HOH:O	2.34	0.59
2:B:158[B]:ARG:NH2	8:B:608:HOH:O	2.38	0.57
2:B:115:VAL:HG23	2:B:153[B]:LEU:HD23	1.88	0.55
1:A:60:LYS:HZ2	1:A:62:VAL:HG22	1.71	0.55
1:A:15:GLN:NE2	4:A:501:GTP:O6	2.41	0.54
2:B:264:ARG:NE	2:B:431:GLU:OE2	2.40	0.54
2:B:390:ARG:NH1	8:B:603:HOH:O	2.32	0.53
2:B:195:VAL:HG23	2:B:196:GLU:HG2	1.89	0.53
1:A:278:ALA:HA	1:A:369:ALA:HB2	1.90	0.53
2:B:42:LEU:HG	2:B:245:PRO:HG3	1.90	0.53
3:F:144:LYS:H	3:F:144:LYS:HD2	1.75	0.51
3:F:112:TRP:HB3	3:F:144:LYS:HZ1	1.76	0.51
3:F:160:ASP:N	3:F:160:ASP:OD1	2.43	0.50
3:F:121:ALA:HB1	3:F:161:LEU:HD21	1.91	0.50
3:F:144:LYS:HD3	3:F:145:PHE:CD2	2.48	0.49
2:B:188:THR:HG22	2:B:421:ALA:HB1	1.95	0.48
2:B:118:VAL:HG11	2:B:153[A]:LEU:HD11	1.95	0.48
1:A:167:LEU:HG	1:A:200:CYS:HB3	1.96	0.48
2:B:213:CYS:HA	2:B:217:LEU:HB2	1.95	0.47
2:B:400:ARG:HD2	3:F:112:TRP:NE1	2.29	0.47
2:B:414:ASP:OD1	2:B:415:GLU:N	2.46	0.47
2:B:21:TRP:CZ2	2:B:65:ALA:HB2	2.50	0.47
3:F:130:GLU:O	3:F:134:LYS:HG2	2.15	0.47
2:B:270:PRO:HG2	2:B:302:MET:HB2	1.97	0.47
2:B:154:ILE:HG23	2:B:166:MET:HG2	1.97	0.47
1:A:228:ASN:OD1	4:A:501:GTP:N1	2.34	0.46
2:B:325:MET:HG2	2:B:355:VAL:HG11	1.98	0.46
1:A:262:TYR:HB2	1:A:265:ILE:HD11	1.98	0.46
1:A:21:TRP:CZ3	1:A:63:PRO:HB3	2.51	0.45
2:B:12:CYS:HB2	6:B:501:GDP:C8	2.52	0.45
2:B:109:THR:OG1	2:B:110:GLU:N	2.49	0.45

Continued on next page...

Continued from previous page...

Atom-1	Atom-2	Interatomic distance (Å)	Clash overlap (Å)
1:A:188:ILE:HD12	1:A:425:MET:HG3	1.99	0.45
2:B:28:HIS:CE1	2:B:243:ARG:HB3	2.52	0.45
2:B:309:HIS:O	2:B:436:GLN:NE2	2.50	0.44
2:B:395:PHE:CE1	2:B:422:GLU:HB2	2.52	0.44
1:A:265:ILE:HG22	1:A:432:TYR:CZ	2.53	0.44
2:B:155:SER:OG	2:B:197:ASN:ND2	2.50	0.44
2:B:161:TYR:HB3	2:B:164:ARG:HG3	2.00	0.43
1:A:178:SER:O	1:A:179:THR:OG1	2.35	0.43
2:B:123:ARG:O	2:B:127:GLU:HG2	2.19	0.43
2:B:140:SER:HA	2:B:171:VAL:HG13	2.00	0.43
2:B:385:GLN:HB2	2:B:429:VAL:HG13	2.00	0.43
2:B:21:TRP:CZ3	2:B:63:PRO:HB3	2.53	0.43
2:B:119:LEU:HD11	2:B:156:LYS:HB3	1.99	0.43
1:A:93:ILE:HG22	1:A:114:ILE:HD11	2.00	0.43
1:A:22:GLU:HG3	1:A:83:TYR:OH	2.19	0.43
1:A:338:LYS:HE3	1:A:338:LYS:HB3	1.77	0.43
2:B:172:MET:HG3	2:B:387:LEU:HD21	2.01	0.43
2:B:167:ASN:ND2	2:B:200:GLU:OE1	2.50	0.43
1:A:234:ILE:HD13	1:A:302:MET:SD	2.59	0.42
1:A:147:SER:HB2	1:A:190:THR:HB	2.00	0.42
1:A:429:GLU:HG2	8:A:602:HOH:O	2.19	0.42
2:B:23:VAL:HG21	2:B:232:SER:HB2	2.01	0.42
1:A:430:LYS:HE3	1:A:430:LYS:HB3	1.82	0.42
2:B:339:ASN:HB3	2:B:342:TYR:HD2	1.84	0.42
2:B:352:LYS:HB2	7:B:502[B]:QRQ:C15	2.49	0.42
2:B:133:GLN:NE2	2:B:252:LEU:H	2.17	0.42
3:F:112:TRP:HB3	3:F:144:LYS:NZ	2.35	0.42
2:B:275:LEU:HD11	2:B:300:ASN:HA	2.02	0.41
1:A:229[A]:ARG:NE	1:A:366:GLY:HA2	2.35	0.41
2:B:147:SER:HB2	2:B:190:SER:OG	2.21	0.41
1:A:75:ILE:HD12	1:A:94:THR:HG22	2.02	0.41
2:B:204:ILE:HD13	2:B:231:VAL:HG13	2.03	0.41
1:A:79:ARG:HG2	1:A:92:LEU:HD13	2.02	0.41
1:A:328:VAL:O	1:A:332:ILE:HG12	2.21	0.41
2:B:327:GLU:HA	2:B:330:GLU:HG2	2.03	0.41
1:A:62:VAL:HG11	1:A:88:HIS:CE1	2.56	0.40
1:A:209:ILE:HG23	1:A:230:LEU:HD23	2.02	0.40
2:B:69:ASP:OD1	2:B:70:LEU:N	2.54	0.40
1:A:215:ARG:CZ	1:A:299:ALA:HB1	2.51	0.40

There are no symmetry-related clashes.

5.3 Torsion angles [i](#)

5.3.1 Protein backbone [i](#)

In the following table, the Percentiles column shows the percent Ramachandran outliers of the chain as a percentile score with respect to all X-ray entries followed by that with respect to entries of similar resolution.

The Analysed column shows the number of residues for which the backbone conformation was analysed, and the total number of residues.

Mol	Chain	Analysed	Favoured	Allowed	Outliers	Percentiles	
1	A	440/451 (98%)	416 (94%)	19 (4%)	5 (1%)	14	5
2	B	433/445 (97%)	411 (95%)	19 (4%)	3 (1%)	22	12
3	F	155/169 (92%)	150 (97%)	5 (3%)	0	100	100
All	All	1028/1065 (96%)	977 (95%)	43 (4%)	8 (1%)	19	10

All (8) Ramachandran outliers are listed below:

Mol	Chain	Res	Type
2	B	57	THR
1	A	38	SER
2	B	245	PRO
1	A	178	SER
1	A	179	THR
2	B	279	GLY
1	A	114	ILE
1	A	42	ILE

5.3.2 Protein sidechains [i](#)

In the following table, the Percentiles column shows the percent sidechain outliers of the chain as a percentile score with respect to all X-ray entries followed by that with respect to entries of similar resolution.

The Analysed column shows the number of residues for which the sidechain conformation was analysed, and the total number of residues.

Mol	Chain	Analysed	Rotameric	Outliers	Percentiles	
1	A	361/379 (95%)	354 (98%)	7 (2%)	57	53
2	B	365/383 (95%)	352 (96%)	13 (4%)	35	28
3	F	120/132 (91%)	115 (96%)	5 (4%)	30	22

Continued on next page...

Continued from previous page...

Mol	Chain	Analysed	Rotameric	Outliers	Percentiles
All	All	846/894 (95%)	821 (97%)	25 (3%)	43 34

All (25) residues with a non-rotameric sidechain are listed below:

Mol	Chain	Res	Type
1	A	71	GLU
1	A	151	SER
1	A	265	ILE
1	A	302	MET
1	A	334	THR
1	A	338	LYS
1	A	341	ILE
2	B	139	HIS
2	B	153[A]	LEU
2	B	153[B]	LEU
2	B	158[A]	ARG
2	B	158[B]	ARG
2	B	164	ARG
2	B	171	VAL
2	B	192	HIS
2	B	248	LEU
2	B	295	MET
2	B	322	ARG
2	B	325	MET
2	B	406	HIS
3	F	14	LEU
3	F	27	ASP
3	F	78	ILE
3	F	144	LYS
3	F	160	ASP

Sometimes sidechains can be flipped to improve hydrogen bonding and reduce clashes. All (11) such sidechains are listed below:

Mol	Chain	Res	Type
1	A	11	GLN
1	A	35	GLN
1	A	61	HIS
1	A	85	GLN
1	A	256	GLN
1	A	372	GLN
2	B	133	GLN

Continued on next page...

Continued from previous page...

Mol	Chain	Res	Type
2	B	197	ASN
2	B	294	GLN
2	B	331	GLN
2	B	424	ASN

5.3.3 RNA [i](#)

There are no RNA molecules in this entry.

5.4 Non-standard residues in protein, DNA, RNA chains [i](#)

There are no non-standard protein/DNA/RNA residues in this entry.

5.5 Carbohydrates [i](#)

There are no monosaccharides in this entry.

5.6 Ligand geometry [i](#)

Of 4 ligands modelled in this entry, 1 is monoatomic - leaving 3 for Mogul analysis.

In the following table, the Counts columns list the number of bonds (or angles) for which Mogul statistics could be retrieved, the number of bonds (or angles) that are observed in the model and the number of bonds (or angles) that are defined in the Chemical Component Dictionary. The Link column lists molecule types, if any, to which the group is linked. The Z score for a bond length (or angle) is the number of standard deviations the observed value is removed from the expected value. A bond length (or angle) with $|Z| > 2$ is considered an outlier worth inspection. RMSZ is the root-mean-square of all Z scores of the bond lengths (or angles).

Mol	Type	Chain	Res	Link	Bond lengths			Bond angles		
					Counts	RMSZ	# $ Z > 2$	Counts	RMSZ	# $ Z > 2$
4	GTP	A	501	5	26,34,34	0.97	1 (3%)	33,54,54	1.82	7 (21%)
7	QRQ	B	502[B]	-	23,25,25	1.54	2 (8%)	27,34,34	1.67	3 (11%)
6	GDP	B	501	-	24,30,30	1.17	2 (8%)	31,47,47	1.93	8 (25%)

In the following table, the Chirals column lists the number of chiral outliers, the number of chiral centers analysed, the number of these observed in the model and the number defined in the Chemical Component Dictionary. Similar counts are reported in the Torsion and Rings columns. '-' means no outliers of that kind were identified.

Mol	Type	Chain	Res	Link	Chirals	Torsions	Rings
4	GTP	A	501	5	-	5/18/38/38	0/3/3/3
7	QRQ	B	502[B]	-	-	3/10/11/11	0/3/3/3
6	GDP	B	501	-	-	3/12/32/32	0/3/3/3

All (5) bond length outliers are listed below:

Mol	Chain	Res	Type	Atoms	Z	Observed(Å)	Ideal(Å)
7	B	502[B]	QRQ	C8-C9	-6.15	1.45	1.49
6	B	501	GDP	C6-C5	4.11	1.48	1.41
4	A	501	GTP	C6-N1	3.04	1.38	1.33
7	B	502[B]	QRQ	C8-C7	-2.93	1.33	1.53
6	B	501	GDP	C5-C4	2.43	1.47	1.40

All (18) bond angle outliers are listed below:

Mol	Chain	Res	Type	Atoms	Z	Observed(°)	Ideal(°)
7	B	502[B]	QRQ	C7-C8-C9	6.83	124.13	112.67
4	A	501	GTP	N3-C2-N1	-5.32	120.12	127.22
6	B	501	GDP	C2-N3-C4	4.83	120.88	115.36
4	A	501	GTP	C2-N3-C4	4.29	120.25	115.36
6	B	501	GDP	C6-N1-C2	4.02	122.32	115.93
6	B	501	GDP	C5-C6-N1	-4.00	117.97	123.43
6	B	501	GDP	C6-C5-C4	-3.71	117.26	120.80
7	B	502[B]	QRQ	C8-C7-C6	3.53	125.68	113.28
4	A	501	GTP	PA-O3A-PB	-3.50	120.81	132.83
6	B	501	GDP	N3-C2-N1	-3.28	122.85	127.22
6	B	501	GDP	PA-O3A-PB	-3.21	121.80	132.83
4	A	501	GTP	PB-O3B-PG	-2.98	122.60	132.83
7	B	502[B]	QRQ	C11-C10-N	2.95	114.91	108.04
4	A	501	GTP	C5-C6-N1	-2.82	119.57	123.43
6	B	501	GDP	C4-C5-N7	-2.66	106.62	109.40
4	A	501	GTP	C6-N1-C2	2.55	119.97	115.93
4	A	501	GTP	C3'-C2'-C1'	2.48	104.72	100.98
6	B	501	GDP	C3'-C2'-C1'	2.35	104.51	100.98

There are no chirality outliers.

All (11) torsion outliers are listed below:

Mol	Chain	Res	Type	Atoms
4	A	501	GTP	PB-O3B-PG-O2G
4	A	501	GTP	C5'-O5'-PA-O1A

Continued on next page...

Continued from previous page...

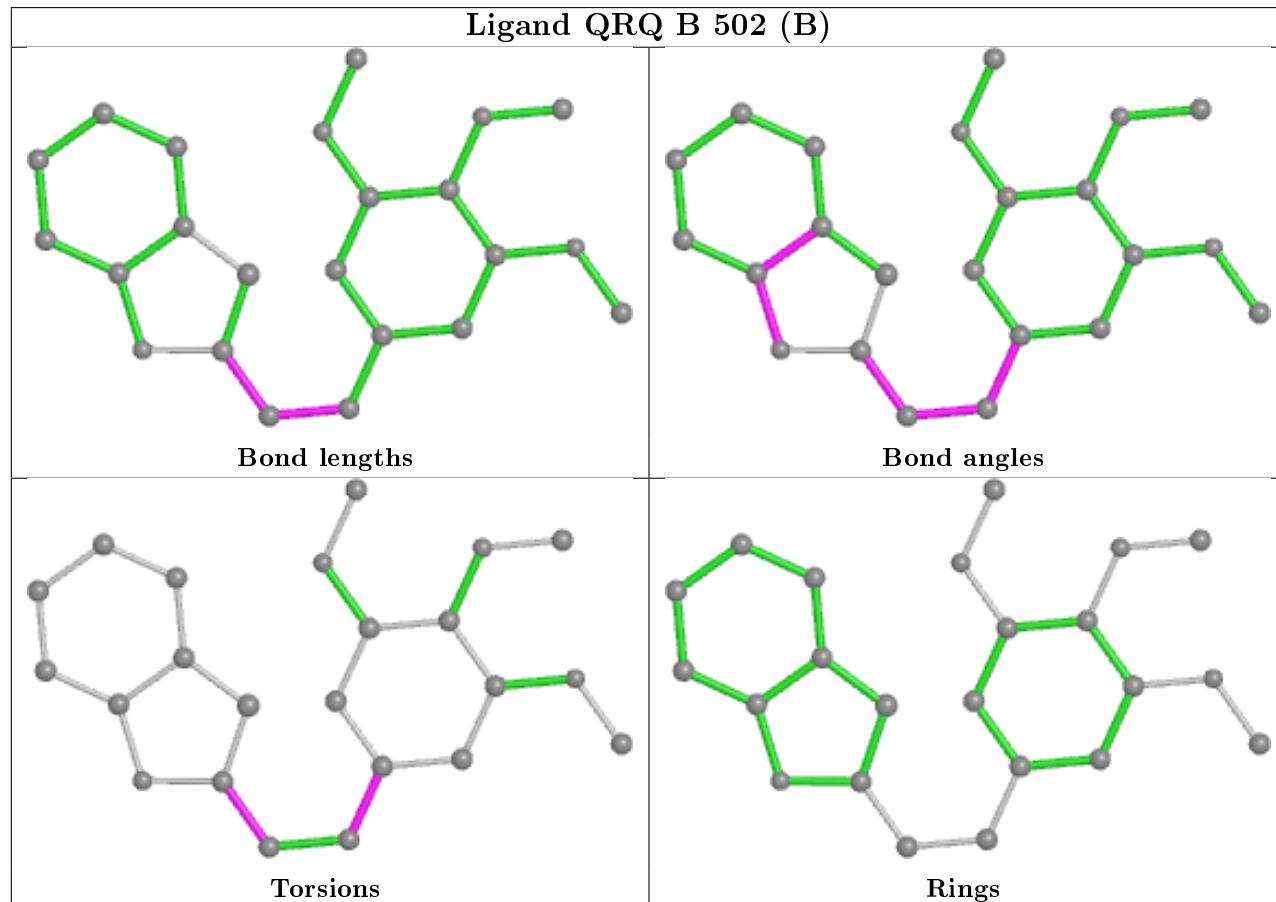
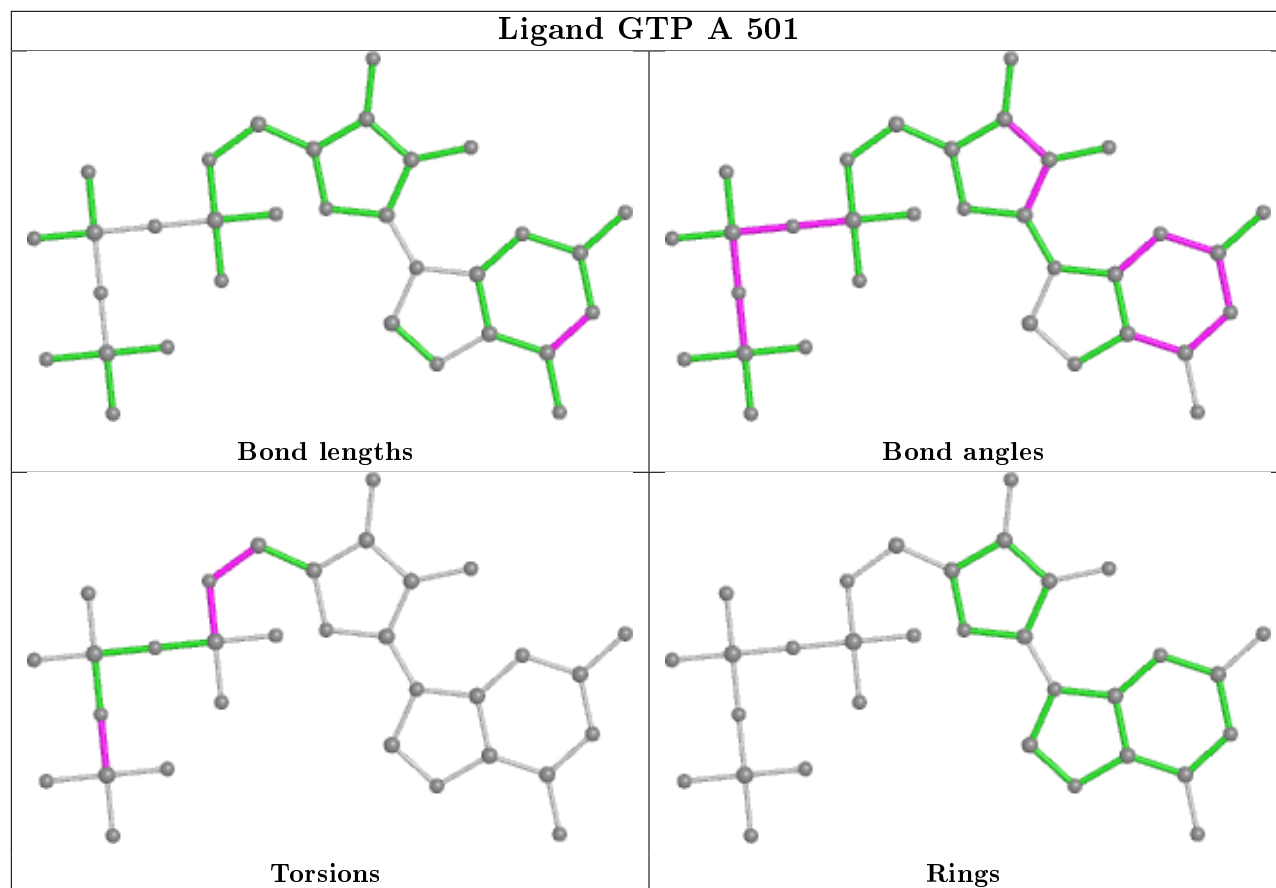
Mol	Chain	Res	Type	Atoms
4	A	501	GTP	C5'-O5'-PA-O2A
7	B	502[B]	QRQ	C7-C8-C9-N
6	B	501	GDP	C5'-O5'-PA-O1A
6	B	501	GDP	C5'-O5'-PA-O2A
4	A	501	GTP	C5'-O5'-PA-O3A
7	B	502[B]	QRQ	C16-C6-C7-C8
7	B	502[B]	QRQ	C5-C6-C7-C8
6	B	501	GDP	C5'-O5'-PA-O3A
4	A	501	GTP	C4'-C5'-O5'-PA

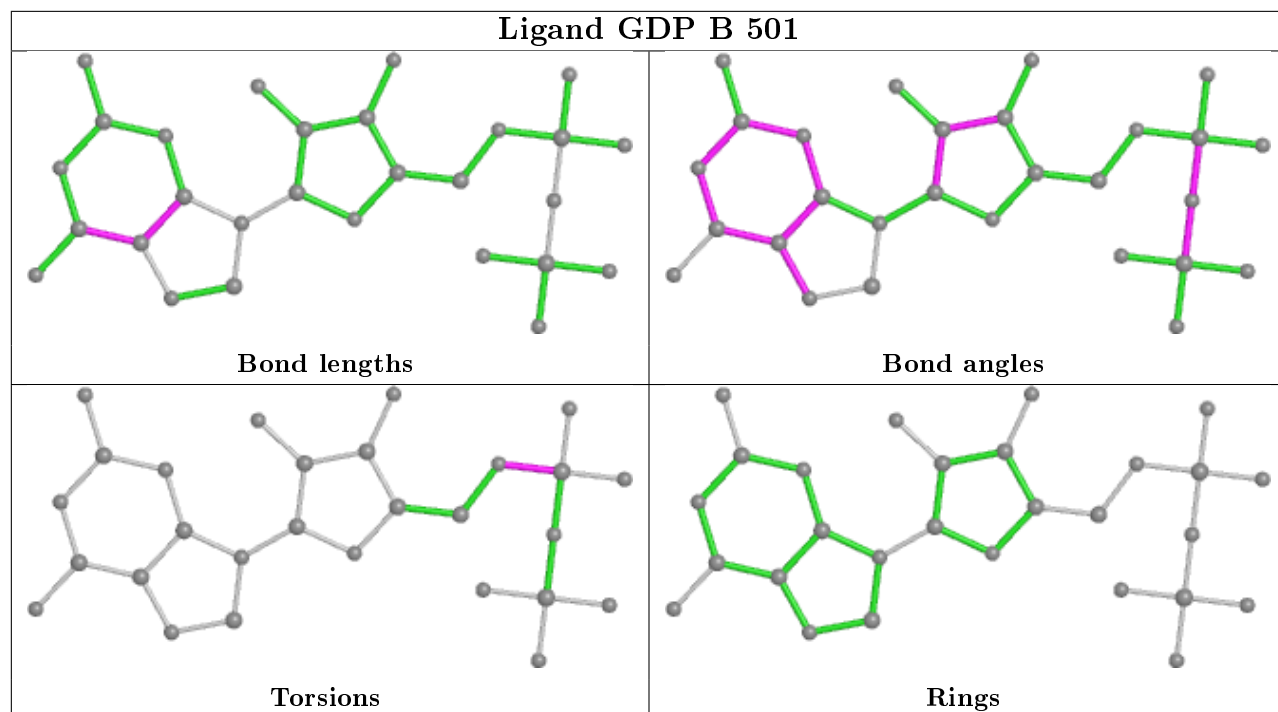
There are no ring outliers.

3 monomers are involved in 4 short contacts:

Mol	Chain	Res	Type	Clashes	Symm-Clashes
4	A	501	GTP	2	0
7	B	502[B]	QRQ	1	0
6	B	501	GDP	1	0

The following is a two-dimensional graphical depiction of Mogul quality analysis of bond lengths, bond angles, torsion angles, and ring geometry for all instances of the Ligand of Interest. In addition, ligands with molecular weight > 250 and outliers as shown on the validation Tables will also be included. For torsion angles, if less than 5% of the Mogul distribution of torsion angles is within 10 degrees of the torsion angle in question, then that torsion angle is considered an outlier. Any bond that is central to one or more torsion angles identified as an outlier by Mogul will be highlighted in the graph. For rings, the root-mean-square deviation (RMSD) between the ring in question and similar rings identified by Mogul is calculated over all ring torsion angles. If the average RMSD is greater than 60 degrees and the minimal RMSD between the ring in question and any Mogul-identified rings is also greater than 60 degrees, then that ring is considered an outlier. The outliers are highlighted in purple. The color gray indicates Mogul did not find sufficient equivalents in the CSD to analyse the geometry.





5.7 Other polymers [i](#)

There are no such residues in this entry.

5.8 Polymer linkage issues [i](#)

There are no chain breaks in this entry.

6 Fit of model and data ⓘ

6.1 Protein, DNA and RNA chains ⓘ

In the following table, the column labelled ‘#RSRZ> 2’ contains the number (and percentage) of RSRZ outliers, followed by percent RSRZ outliers for the chain as percentile scores relative to all X-ray entries and entries of similar resolution. The OWAB column contains the minimum, median, 95th percentile and maximum values of the occupancy-weighted average B-factor per residue. The column labelled ‘Q< 0.9’ lists the number of (and percentage) of residues with an average occupancy less than 0.9.

Mol	Chain	Analysed	<RSRZ>	#RSRZ>2		OWAB(Å ²)	Q<0.9
1	A	436/451 (96%)	0.43	24 (5%)	25 27	14, 27, 53, 79	2 (0%)
2	B	431/445 (96%)	0.80	45 (10%)	6 6	15, 35, 65, 96	0
3	F	155/169 (91%)	0.20	2 (1%)	77 79	15, 26, 46, 62	0
All	All	1022/1065 (95%)	0.55	71 (6%)	16 18	14, 29, 60, 96	2 (0%)

All (71) RSRZ outliers are listed below:

Mol	Chain	Res	Type	RSRZ
2	B	247	GLN	7.3
2	B	283	TYR	7.3
1	A	43	GLY	5.7
1	A	44	GLY	5.6
1	A	262	TYR	5.5
2	B	285	ALA	5.5
1	A	41	THR	5.2
2	B	440	ALA	4.8
2	B	78	VAL	4.8
2	B	248	LEU	4.5
1	A	38	SER	4.4
2	B	1	MET	4.3
2	B	82	PRO	4.1
2	B	41	ASP	4.1
1	A	349	THR	4.0
2	B	282	GLN	3.9
1	A	177	VAL	3.8
2	B	286	LEU	3.8
2	B	441	ASP	3.7
2	B	59	ASN	3.5
2	B	439	THR	3.5
2	B	407	TRP	3.5
2	B	272	PHE	3.4

Continued on next page...

Continued from previous page...

Mol	Chain	Res	Type	RSRZ
1	A	365	GLY	3.4
1	A	281	ALA	3.4
1	A	1	MET	3.4
2	B	55	GLU	3.4
2	B	42	LEU	3.3
2	B	333	LEU	3.1
2	B	281	GLN	3.0
2	B	416	MET	3.0
2	B	415	GLU	2.9
2	B	75	MET	2.9
2	B	246	GLY	2.8
2	B	94	PHE	2.8
2	B	249	ASN	2.8
3	F	167	LYS	2.8
1	A	338	LYS	2.7
2	B	61	TYR	2.7
1	A	40	LYS	2.7
2	B	278	ARG	2.7
1	A	46	ASP	2.6
2	B	39	ASP	2.6
2	B	322	ARG	2.6
1	A	342	GLN	2.5
2	B	220	THR	2.5
2	B	277	SER	2.5
2	B	370	GLY	2.5
2	B	338	LYS	2.5
1	A	282	TYR	2.4
1	A	347	CYS	2.4
2	B	37	HIS	2.4
2	B	57	THR	2.4
1	A	337	THR	2.4
2	B	325	MET	2.4
1	A	435	VAL	2.4
2	B	56	ALA	2.3
1	A	178	SER	2.3
3	F	144	LYS	2.3
2	B	95	GLY	2.2
2	B	36	TYR	2.1
2	B	412	GLY	2.1
1	A	47	ASP	2.1
1	A	59	GLY	2.1
2	B	81	GLY	2.1

Continued on next page...

Continued from previous page...

Mol	Chain	Res	Type	RSRZ
1	A	364	PRO	2.1
2	B	83	PHE	2.1
1	A	45	GLY	2.1
2	B	324	SER	2.0
2	B	68	VAL	2.0
1	A	348	PRO	2.0

6.2 Non-standard residues in protein, DNA, RNA chains [i](#)

There are no non-standard protein/DNA/RNA residues in this entry.

6.3 Carbohydrates [i](#)

There are no monosaccharides in this entry.

6.4 Ligands [i](#)

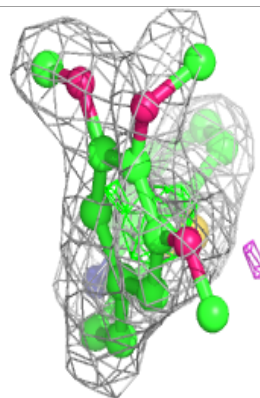
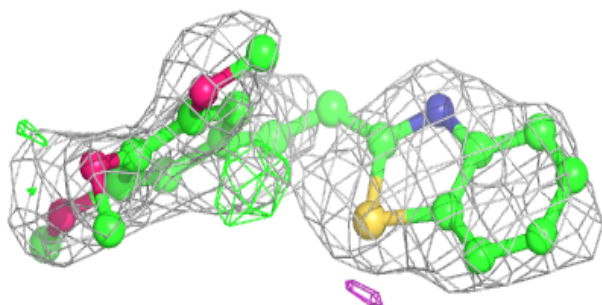
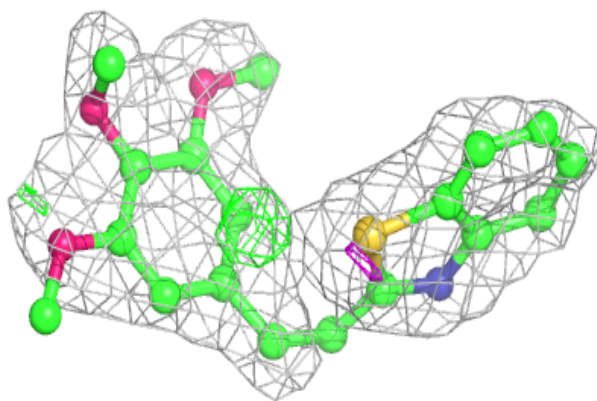
In the following table, the Atoms column lists the number of modelled atoms in the group and the number defined in the chemical component dictionary. The B-factors column lists the minimum, median, 95th percentile and maximum values of B factors of atoms in the group. The column labelled 'Q< 0.9' lists the number of atoms with occupancy less than 0.9.

Mol	Type	Chain	Res	Atoms	RSCC	RSR	B-factors(\AA^2)	Q<0.9
7	QRQ	B	502[B]	23/23	0.84	0.28	17,25,32,35	23
6	GDP	B	501	28/28	0.94	0.13	19,27,37,41	0
4	GTP	A	501	32/32	0.96	0.14	12,18,26,34	0
5	MG	A	502	1/1	0.97	0.05	20,20,20,20	0

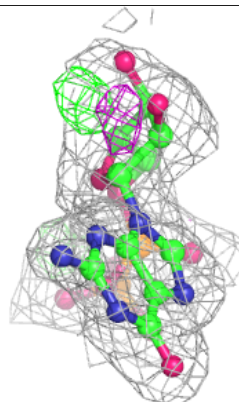
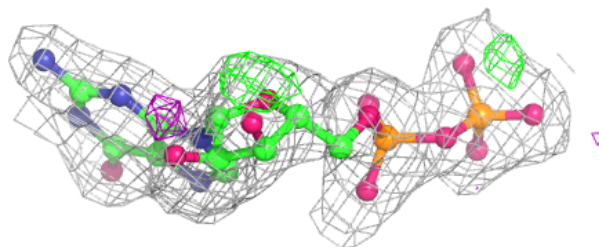
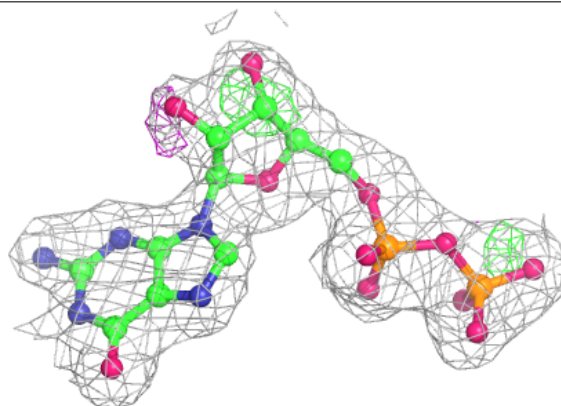
The following is a graphical depiction of the model fit to experimental electron density of all instances of the Ligand of Interest. In addition, ligands with molecular weight > 250 and outliers as shown on the geometry validation Tables will also be included. Each fit is shown from different orientation to approximate a three-dimensional view.

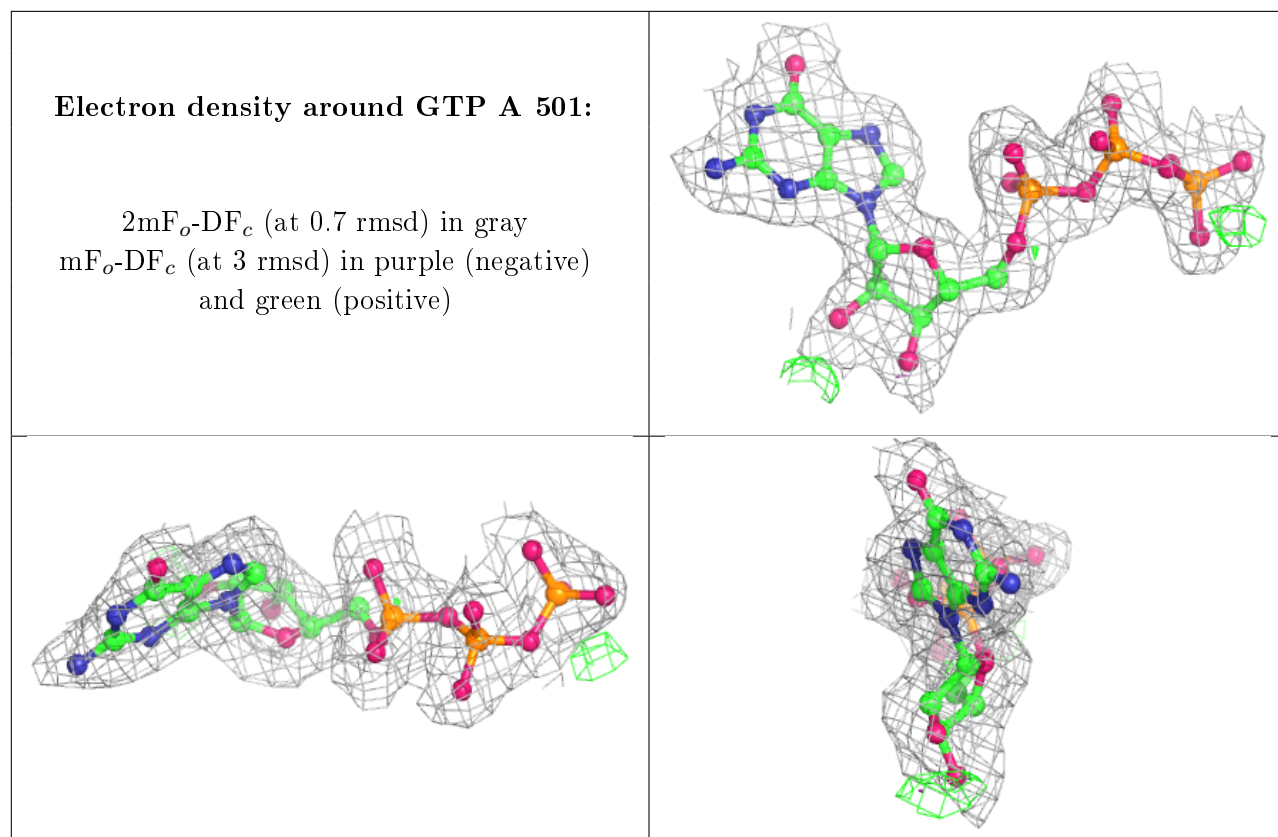
Electron density around QRQ B 502 (B):

$2mF_o-DF_c$ (at 0.7 rmsd) in gray
 mF_o-DF_c (at 3 rmsd) in purple (negative)
and green (positive)

**Electron density around GDP B 501:**

$2mF_o-DF_c$ (at 0.7 rmsd) in gray
 mF_o-DF_c (at 3 rmsd) in purple (negative)
and green (positive)





6.5 Other polymers [i](#)

There are no such residues in this entry.