



Full wwPDB X-ray Structure Validation Report ⓘ

May 15, 2020 – 07:01 pm BST

PDB ID : 4ZZX
Title : Structure of PARP2 catalytic domain bound to an isoindolinone inhibitor
Authors : Casale, E.; Fasolini, M.; Papeo, G.; Posterì, H.; Borghi, D.; Busel, A.A.; Caprera, F.; Ciomei, M.; Cirila, A.; Corti, E.; D'Anello, M.; Fasolini, M.; Felder, E.R.; Forte, B.; Galvani, A.; Isacchi, A.; Khvat, A.; Krasavin, M.Y.; Lupi, R.; Orsini, P.; Perego, R.; Pesenti, E.; Pezzetta, D.; Rainoldi, S.; RiccardiSirtori, F.; Scolaro, A.; Sola, F.; Zuccotto, F.; Donati, D.; Montagnoli, A.
Deposited on : 2015-04-15
Resolution : 1.65 Å(reported)

This is a Full wwPDB X-ray Structure Validation Report for a publicly released PDB entry.

We welcome your comments at validation@mail.wwpdb.org

A user guide is available at

<https://www.wwpdb.org/validation/2017/XrayValidationReportHelp>

with specific help available everywhere you see the ⓘ symbol.

The following versions of software and data (see [references ⓘ](#)) were used in the production of this report:

MolProbity : 4.02b-467
Mogul : 1.8.5 (274361), CSD as541be (2020)
Xtriage (Phenix) : 1.13
EDS : 2.11
Percentile statistics : 20191225.v01 (using entries in the PDB archive December 25th 2019)
Refmac : 5.8.0158
CCP4 : 7.0.044 (Gargrove)
Ideal geometry (proteins) : Engh & Huber (2001)
Ideal geometry (DNA, RNA) : Parkinson et al. (1996)
Validation Pipeline (wwPDB-VP) : 2.11

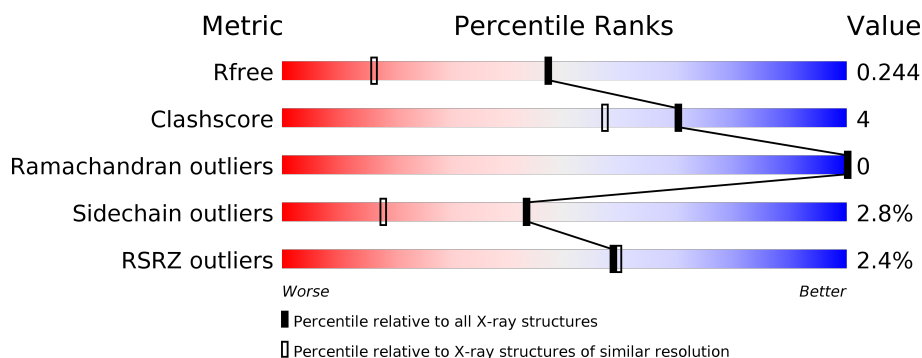
1 Overall quality at a glance ⓘ

The following experimental techniques were used to determine the structure:

X-RAY DIFFRACTION

The reported resolution of this entry is 1.65 Å.

Percentile scores (ranging between 0-100) for global validation metrics of the entry are shown in the following graphic. The table shows the number of entries on which the scores are based.



Metric	Whole archive (#Entries)	Similar resolution (#Entries, resolution range(Å))
R_{free}	130704	1827 (1.66-1.66)
Clashscore	141614	1931 (1.66-1.66)
Ramachandran outliers	138981	1891 (1.66-1.66)
Sidechain outliers	138945	1891 (1.66-1.66)
RSRZ outliers	127900	1791 (1.66-1.66)

The table below summarises the geometric issues observed across the polymeric chains and their fit to the electron density. The red, orange, yellow and green segments on the lower bar indicate the fraction of residues that contain outliers for ≥ 3 , 2, 1 and 0 types of geometric quality criteria respectively. A grey segment represents the fraction of residues that are not modelled. The numeric value for each fraction is indicated below the corresponding segment, with a dot representing fractions $\leq 5\%$. The upper red bar (where present) indicates the fraction of residues that have poor fit to the electron density. The numeric value is given above the bar.

Mol	Chain	Length	Quality of chain
1	A	363	<div> <div>2%</div> <div> <div></div> <div>89%</div> <div>6%</div> <div>• •</div> </div> </div>
1	B	363	<div> <div>3%</div> <div> <div></div> <div>89%</div> <div>6%</div> <div>• •</div> </div> </div>

2 Entry composition [i](#)

There are 3 unique types of molecules in this entry. The entry contains 5927 atoms, of which 0 are hydrogens and 0 are deuteriums.

In the tables below, the ZeroOcc column contains the number of atoms modelled with zero occupancy, the AltConf column contains the number of residues with at least one atom in alternate conformation and the Trace column contains the number of residues modelled with at most 2 atoms.

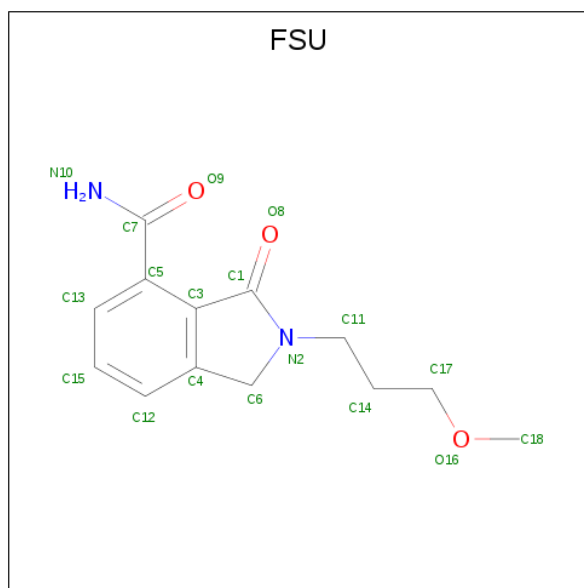
- Molecule 1 is a protein called POLY [ADP-RIBOSE] POLYMERASE 2.

Mol	Chain	Residues	Atoms					ZeroOcc	AltConf	Trace
1	A	351	Total	C	N	O	S	0	1	0
			2799	1781	482	517	19			
1	B	349	Total	C	N	O	S	0	0	0
			2780	1770	480	511	19			

There are 4 discrepancies between the modelled and reference sequences:

Chain	Residue	Modelled	Actual	Comment	Reference
A	221	GLY	-	expression tag	UNP Q9UGN5
A	222	PRO	-	expression tag	UNP Q9UGN5
B	221	GLY	-	expression tag	UNP Q9UGN5
B	222	PRO	-	expression tag	UNP Q9UGN5

- Molecule 2 is 2-(3-methoxypropyl)-3-oxo-2,3-dihydro-1H-isoindole-4-carboxamide (three-letter code: FSU) (formula: C₁₃H₁₆N₂O₃).



Mol	Chain	Residues	Atoms				ZeroOcc	AltConf
2	A	1	Total	C	N	O	0	0
			18	13	2	3		
2	B	1	Total	C	N	O	0	0
			18	13	2	3		

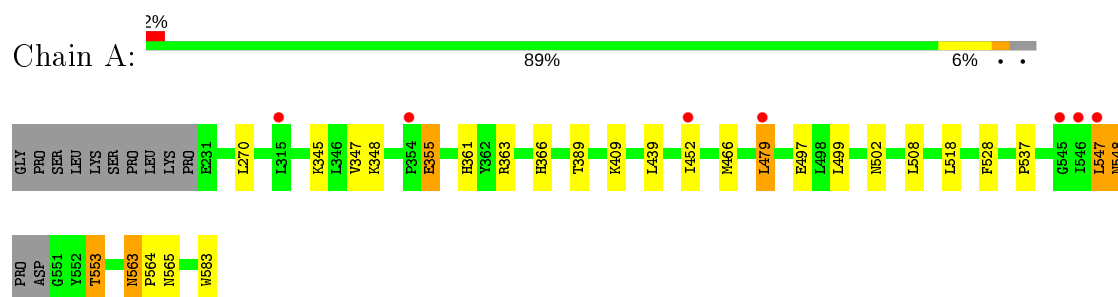
- Molecule 3 is water.

Mol	Chain	Residues	Atoms		ZeroOcc	AltConf
3	A	163	Total	O	0	0
			163	163		
3	B	149	Total	O	0	0
			149	149		

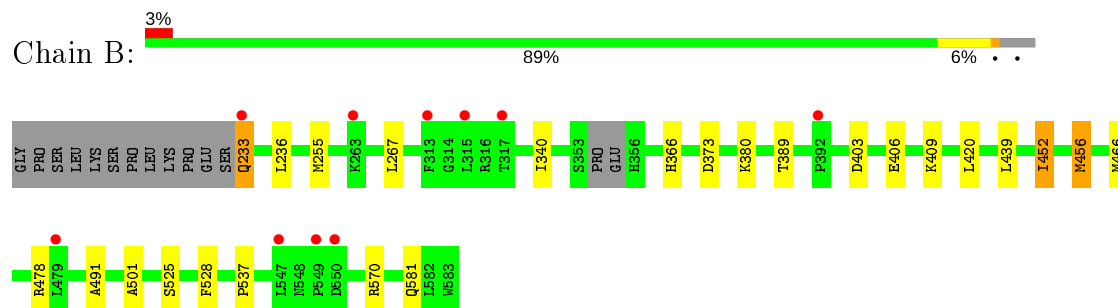
3 Residue-property plots [i](#)

These plots are drawn for all protein, RNA and DNA chains in the entry. The first graphic for a chain summarises the proportions of the various outlier classes displayed in the second graphic. The second graphic shows the sequence view annotated by issues in geometry and electron density. Residues are color-coded according to the number of geometric quality criteria for which they contain at least one outlier: green = 0, yellow = 1, orange = 2 and red = 3 or more. A red dot above a residue indicates a poor fit to the electron density ($RSRZ > 2$). Stretches of 2 or more consecutive residues without any outlier are shown as a green connector. Residues present in the sample, but not in the model, are shown in grey.

- Molecule 1: POLY [ADP-RIBOSE] POLYMERASE 2



- Molecule 1: POLY [ADP-RIBOSE] POLYMERASE 2



4 Data and refinement statistics

Property	Value	Source
Space group	P 21 21 21	Depositor
Cell constants a, b, c, α , β , γ	72.46Å 72.74Å 141.34Å 90.00° 90.00° 90.00°	Depositor
Resolution (Å)	30.67 – 1.65 41.53 – 1.65	Depositor EDS
% Data completeness (in resolution range)	99.5 (30.67-1.65) 99.5 (41.53-1.65)	Depositor EDS
R_{merge}	0.08	Depositor
R_{sym}	(Not available)	Depositor
$\langle I/\sigma(I) \rangle$ ¹	2.26 (at 1.65Å)	Xtriage
Refinement program	REFMAC 5.6.0117	Depositor
R, R_{free}	0.213 , 0.244 0.212 , 0.244	Depositor DCC
R_{free} test set	4478 reflections (5.01%)	wwPDB-VP
Wilson B-factor (Å ²)	18.4	Xtriage
Anisotropy	0.125	Xtriage
Bulk solvent k_{sol} (e/Å ³), B_{sol} (Å ²)	0.37 , 24.3	EDS
L-test for twinning ²	$\langle L \rangle = 0.46$, $\langle L^2 \rangle = 0.29$	Xtriage
Estimated twinning fraction	0.070 for k,h,-l	Xtriage
F_o, F_c correlation	0.94	EDS
Total number of atoms	5927	wwPDB-VP
Average B, all atoms (Å ²)	21.0	wwPDB-VP

Xtriage's analysis on translational NCS is as follows: *The largest off-origin peak in the Patterson function is 3.82% of the height of the origin peak. No significant pseudotranslation is detected.*

¹Intensities estimated from amplitudes.

²Theoretical values of $\langle |L| \rangle$, $\langle L^2 \rangle$ for acentric reflections are 0.5, 0.333 respectively for untwinned datasets, and 0.375, 0.2 for perfectly twinned datasets.

5 Model quality [i](#)

5.1 Standard geometry [i](#)

Bond lengths and bond angles in the following residue types are not validated in this section: FSU

The Z score for a bond length (or angle) is the number of standard deviations the observed value is removed from the expected value. A bond length (or angle) with $|Z| > 5$ is considered an outlier worth inspection. RMSZ is the root-mean-square of all Z scores of the bond lengths (or angles).

Mol	Chain	Bond lengths		Bond angles	
		RMSZ	$\# Z > 5$	RMSZ	$\# Z > 5$
1	A	0.51	1/2861 (0.0%)	0.62	0/3862
1	B	0.51	0/2839	0.61	0/3833
All	All	0.51	1/5700 (0.0%)	0.61	0/7695

All (1) bond length outliers are listed below:

Mol	Chain	Res	Type	Atoms	Z	Observed(Å)	Ideal(Å)
1	A	583	TRP	CD2-CE2	5.15	1.47	1.41

There are no bond angle outliers.

There are no chirality outliers.

There are no planarity outliers.

5.2 Too-close contacts [i](#)

In the following table, the Non-H and H(model) columns list the number of non-hydrogen atoms and hydrogen atoms in the chain respectively. The H(added) column lists the number of hydrogen atoms added and optimized by MolProbity. The Clashes column lists the number of clashes within the asymmetric unit, whereas Symm-Clashes lists symmetry related clashes.

Mol	Chain	Non-H	H(model)	H(added)	Clashes	Symm-Clashes
1	A	2799	0	2810	20	0
1	B	2780	0	2792	20	0
2	A	18	0	16	0	0
2	B	18	0	16	0	0
3	A	163	0	0	3	0
3	B	149	0	0	6	0
All	All	5927	0	5634	40	0

The all-atom clashscore is defined as the number of clashes found per 1000 atoms (including hydrogen atoms). The all-atom clashscore for this structure is 4.

All (40) close contacts within the same asymmetric unit are listed below, sorted by their clash magnitude.

Atom-1	Atom-2	Interatomic distance (Å)	Clash overlap (Å)
1:B:456:MET:HE3	1:B:456:MET:HA	1.29	1.10
1:B:456:MET:CE	1:B:456:MET:HA	1.90	1.01
1:B:406:GLU:HG3	1:B:570:ARG:HH12	1.42	0.83
1:A:479:LEU:HD12	1:A:479:LEU:H	1.53	0.73
1:A:563:ASN:HD22	1:A:565:ASN:H	1.36	0.72
1:B:456:MET:HE2	1:B:501:ALA:HB1	1.73	0.71
1:B:406:GLU:HG3	1:B:570:ARG:NH1	2.06	0.70
1:B:452:ILE:HD13	3:B:2066:HOH:O	1.89	0.70
1:B:478:ARG:HH21	1:B:581:GLN:HG3	1.57	0.70
1:B:366:HIS:HE1	3:B:2058:HOH:O	1.80	0.62
1:B:456:MET:CE	1:B:456:MET:CA	2.67	0.60
1:A:366:HIS:HE1	3:A:2066:HOH:O	1.84	0.59
1:A:366:HIS:CE1	3:A:2066:HOH:O	2.57	0.56
1:A:497:GLU:HB3	1:A:518:LEU:HD11	1.88	0.56
1:A:547:LEU:HD23	1:A:553:THR:HG21	1.89	0.55
1:A:563:ASN:ND2	1:A:564:PRO:HD2	2.22	0.54
1:A:548:ASN:CB	1:A:553:THR:HG22	2.37	0.54
1:B:255:MET:CE	3:B:2015:HOH:O	2.56	0.54
1:A:548:ASN:HB3	1:A:553:THR:HG22	1.89	0.53
1:A:361:HIS:HD2	3:A:2062:HOH:O	1.91	0.52
1:A:563:ASN:ND2	1:A:565:ASN:H	2.05	0.52
1:B:366:HIS:CE1	3:B:2058:HOH:O	2.57	0.51
1:B:255:MET:HE2	3:B:2015:HOH:O	2.13	0.49
1:B:452:ILE:HD12	1:B:452:ILE:O	2.13	0.48
1:B:528:PHE:CD1	1:B:537:PRO:HA	2.49	0.48
1:A:347:VAL:O	1:A:361:HIS:HE1	1.98	0.47
1:A:355:GLU:OE2	1:A:363:ARG:NH2	2.48	0.46
1:A:528:PHE:CD1	1:A:537:PRO:HA	2.52	0.45
1:B:233:GLN:HA	1:B:233:GLN:NE2	2.30	0.45
1:A:548:ASN:H	1:A:553:THR:HG21	1.82	0.44
1:A:389:THR:HB	1:A:466:MET:HA	1.99	0.44
1:B:389:THR:HB	1:B:466:MET:HA	1.98	0.44
1:B:409:LYS:HD3	1:B:439:LEU:O	2.19	0.42
1:A:479:LEU:CD1	1:A:479:LEU:H	2.28	0.42
1:A:345:LYS:HA	1:A:348:LYS:HE2	2.01	0.42
1:A:502:ASN:ND2	1:A:508:LEU:HD11	2.35	0.42
1:A:409:LYS:HD3	1:A:439:LEU:O	2.20	0.41

Continued on next page...

Continued from previous page...

Atom-1	Atom-2	Interatomic distance (Å)	Clash overlap (Å)
1:B:420:LEU:HB2	1:B:491:ALA:HB1	2.02	0.41
1:B:267:LEU:HD13	1:B:340:ILE:HG21	2.02	0.41
1:B:452:ILE:CD1	3:B:2066:HOH:O	2.56	0.41

There are no symmetry-related clashes.

5.3 Torsion angles [i](#)

5.3.1 Protein backbone [i](#)

In the following table, the Percentiles column shows the percent Ramachandran outliers of the chain as a percentile score with respect to all X-ray entries followed by that with respect to entries of similar resolution.

The Analysed column shows the number of residues for which the backbone conformation was analysed, and the total number of residues.

Mol	Chain	Analysed	Favoured	Allowed	Outliers	Percentiles	
1	A	348/363 (96%)	344 (99%)	4 (1%)	0	100	100
1	B	345/363 (95%)	338 (98%)	7 (2%)	0	100	100
All	All	693/726 (96%)	682 (98%)	11 (2%)	0	100	100

There are no Ramachandran outliers to report.

5.3.2 Protein sidechains [i](#)

In the following table, the Percentiles column shows the percent sidechain outliers of the chain as a percentile score with respect to all X-ray entries followed by that with respect to entries of similar resolution.

The Analysed column shows the number of residues for which the sidechain conformation was analysed, and the total number of residues.

Mol	Chain	Analysed	Rotameric	Outliers	Percentiles	
1	A	306/316 (97%)	297 (97%)	9 (3%)	42	16
1	B	303/316 (96%)	295 (97%)	8 (3%)	46	21
All	All	609/632 (96%)	592 (97%)	17 (3%)	43	18

All (17) residues with a non-rotameric sidechain are listed below:

Mol	Chain	Res	Type
1	A	270	LEU
1	A	355	GLU
1	A	452	ILE
1	A	479	LEU
1	A	499	LEU
1	A	547	LEU
1	A	548	ASN
1	A	553	THR
1	A	563	ASN
1	B	233	GLN
1	B	236	LEU
1	B	373	ASP
1	B	380	LYS
1	B	403	ASP
1	B	452	ILE
1	B	456	MET
1	B	525	SER

Some sidechains can be flipped to improve hydrogen bonding and reduce clashes. All (8) such sidechains are listed below:

Mol	Chain	Res	Type
1	A	293	GLN
1	A	361	HIS
1	A	366	HIS
1	A	548	ASN
1	A	563	ASN
1	B	233	GLN
1	B	366	HIS
1	B	510	GLN

5.3.3 RNA ⓘ

There are no RNA molecules in this entry.

5.4 Non-standard residues in protein, DNA, RNA chains ⓘ

There are no non-standard protein/DNA/RNA residues in this entry.

5.5 Carbohydrates ⓘ

There are no carbohydrates in this entry.

5.6 Ligand geometry

2 ligands are modelled in this entry.

In the following table, the Counts columns list the number of bonds (or angles) for which Mogul statistics could be retrieved, the number of bonds (or angles) that are observed in the model and the number of bonds (or angles) that are defined in the Chemical Component Dictionary. The Link column lists molecule types, if any, to which the group is linked. The Z score for a bond length (or angle) is the number of standard deviations the observed value is removed from the expected value. A bond length (or angle) with $|Z| > 2$ is considered an outlier worth inspection. RMSZ is the root-mean-square of all Z scores of the bond lengths (or angles).

Mol	Type	Chain	Res	Link	Bond lengths			Bond angles		
					Counts	RMSZ	# Z > 2	Counts	RMSZ	# Z > 2
2	FSU	B	1584	-	19,19,19	2.00	3 (15%)	22,26,26	3.54	9 (40%)
2	FSU	A	1584	-	19,19,19	1.93	3 (15%)	22,26,26	3.39	8 (36%)

In the following table, the Chirals column lists the number of chiral outliers, the number of chiral centers analysed, the number of these observed in the model and the number defined in the Chemical Component Dictionary. Similar counts are reported in the Torsion and Rings columns. '-' means no outliers of that kind were identified.

Mol	Type	Chain	Res	Link	Chirals	Torsions	Rings
2	FSU	B	1584	-	-	2/9/21/21	0/2/2/2
2	FSU	A	1584	-	-	2/9/21/21	0/2/2/2

All (6) bond length outliers are listed below:

Mol	Chain	Res	Type	Atoms	Z	Observed(Å)	Ideal(Å)
2	B	1584	FSU	C6-N2	-7.20	1.36	1.46
2	A	1584	FSU	C6-N2	-6.20	1.37	1.46
2	A	1584	FSU	C6-C4	-3.88	1.45	1.50
2	A	1584	FSU	O8-C1	3.49	1.29	1.22
2	B	1584	FSU	C6-C4	-3.23	1.46	1.50
2	B	1584	FSU	O8-C1	2.98	1.28	1.22

All (17) bond angle outliers are listed below:

Mol	Chain	Res	Type	Atoms	Z	Observed(°)	Ideal(°)
2	B	1584	FSU	C3-C1-N2	10.97	114.69	106.41
2	A	1584	FSU	C3-C1-N2	9.53	113.60	106.41
2	A	1584	FSU	C4-C6-N2	8.48	106.47	102.46
2	B	1584	FSU	C4-C6-N2	7.28	105.90	102.46
2	B	1584	FSU	C5-C3-C1	6.37	139.59	131.92

Continued on next page...

Continued from previous page...

Mol	Chain	Res	Type	Atoms	Z	Observed(°)	Ideal(°)
2	A	1584	FSU	C5-C3-C1	6.19	139.37	131.92
2	B	1584	FSU	O8-C1-C3	-4.88	122.15	129.09
2	A	1584	FSU	O8-C1-C3	-4.15	123.18	129.09
2	A	1584	FSU	C6-N2-C11	2.93	126.45	123.26
2	A	1584	FSU	C6-N2-C1	-2.92	107.46	113.08
2	B	1584	FSU	C6-N2-C1	-2.91	107.48	113.08
2	B	1584	FSU	C6-N2-C11	2.50	125.98	123.26
2	B	1584	FSU	O9-C7-C5	-2.32	117.51	120.24
2	A	1584	FSU	C5-C7-N10	2.17	121.62	118.29
2	B	1584	FSU	C13-C5-C3	-2.16	117.08	120.19
2	A	1584	FSU	O9-C7-N10	-2.10	119.60	122.58
2	B	1584	FSU	C5-C7-N10	2.02	121.39	118.29

There are no chirality outliers.

All (4) torsion outliers are listed below:

Mol	Chain	Res	Type	Atoms
2	B	1584	FSU	C3-C5-C7-O9
2	B	1584	FSU	C3-C5-C7-N10
2	A	1584	FSU	C3-C5-C7-O9
2	A	1584	FSU	C3-C5-C7-N10

There are no ring outliers.

No monomer is involved in short contacts.

5.7 Other polymers [i](#)

There are no such residues in this entry.

5.8 Polymer linkage issues [i](#)

There are no chain breaks in this entry.

6 Fit of model and data ⓘ

6.1 Protein, DNA and RNA chains ⓘ

In the following table, the column labelled ‘#RSRZ> 2’ contains the number (and percentage) of RSRZ outliers, followed by percent RSRZ outliers for the chain as percentile scores relative to all X-ray entries and entries of similar resolution. The OWAB column contains the minimum, median, 95th percentile and maximum values of the occupancy-weighted average B-factor per residue. The column labelled ‘Q< 0.9’ lists the number of (and percentage) of residues with an average occupancy less than 0.9.

Mol	Chain	Analysed	<RSRZ>	#RSRZ>2	OWAB(Å ²)	Q<0.9
1	A	351/363 (96%)	-0.02	7 (1%) 65 67	10, 19, 31, 50	0
1	B	349/363 (96%)	-0.02	10 (2%) 51 52	9, 20, 34, 56	0
All	All	700/726 (96%)	-0.02	17 (2%) 59 59	9, 19, 33, 56	0

All (17) RSRZ outliers are listed below:

Mol	Chain	Res	Type	RSRZ
1	B	315	LEU	6.1
1	A	315	LEU	5.4
1	A	479	LEU	4.4
1	B	550	ASP	4.3
1	A	354	PRO	4.2
1	B	549	PRO	3.5
1	B	317	THR	2.9
1	A	547	LEU	2.8
1	B	233	GLN	2.7
1	A	546	ILE	2.6
1	B	547	LEU	2.6
1	A	452	ILE	2.3
1	B	263	LYS	2.2
1	B	479	LEU	2.2
1	A	545	GLY	2.1
1	B	313	PHE	2.1
1	B	392	PRO	2.0

6.2 Non-standard residues in protein, DNA, RNA chains ⓘ

There are no non-standard protein/DNA/RNA residues in this entry.

6.3 Carbohydrates [i](#)

There are no carbohydrates in this entry.

6.4 Ligands [i](#)

In the following table, the Atoms column lists the number of modelled atoms in the group and the number defined in the chemical component dictionary. The B-factors column lists the minimum, median, 95th percentile and maximum values of B factors of atoms in the group. The column labelled 'Q< 0.9' lists the number of atoms with occupancy less than 0.9.

Mol	Type	Chain	Res	Atoms	RSCC	RSR	B-factors(\AA^2)	Q<0.9
2	FSU	A	1584	18/18	0.94	0.09	12,14,24,25	0
2	FSU	B	1584	18/18	0.95	0.08	11,12,24,24	0

6.5 Other polymers [i](#)

There are no such residues in this entry.