



Full wwPDB EM Validation Report ⓘ

Oct 25, 2022 – 11:03 pm BST

PDB ID : 7ZZ8
EMDB ID : EMD-15037
Title : Cryo-EM structure of Lactococcus lactis pyruvate carboxylase with acetyl-CoA and cyclic di-AMP
Authors : Lopez-Alonso, J.P.; Lazaro, M.; Gil, D.; Choi, P.H.; Tong, L.; Valle, M.
Deposited on : 2022-05-25
Resolution : 3.29 Å(reported)
Based on initial model : 5VYZ

This is a Full wwPDB EM Validation Report for a publicly released PDB entry.

We welcome your comments at validation@mail.wwpdb.org

A user guide is available at

<https://www.wwpdb.org/validation/2017/EMValidationReportHelp>
with specific help available everywhere you see the ⓘ symbol.

The types of validation reports are described at

<http://www.wwpdb.org/validation/2017/FAQs#types>.

The following versions of software and data (see [references ⓘ](#)) were used in the production of this report:

EMDB validation analysis : 0.0.1.dev43
Mogul : 1.8.4, CSD as541be (2020)
MolProbity : 4.02b-467
buster-report : 1.1.7 (2018)
Percentile statistics : 20191225.v01 (using entries in the PDB archive December 25th 2019)
MapQ : 1.9.9
Ideal geometry (proteins) : Engh & Huber (2001)
Ideal geometry (DNA, RNA) : Parkinson et al. (1996)
Validation Pipeline (wwPDB-VP) : 2.31.2

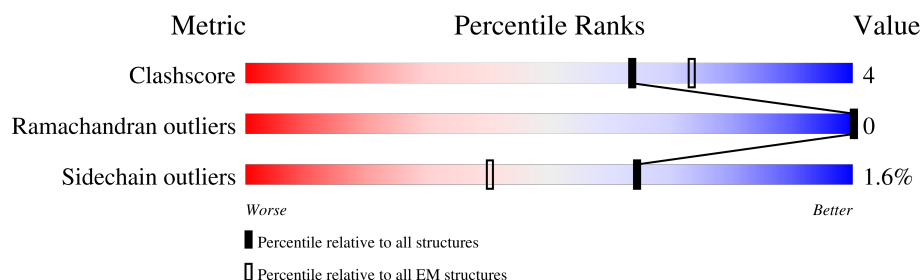
1 Overall quality at a glance

The following experimental techniques were used to determine the structure:

ELECTRON MICROSCOPY

The reported resolution of this entry is 3.29 Å.

Percentile scores (ranging between 0-100) for global validation metrics of the entry are shown in the following graphic. The table shows the number of entries on which the scores are based.



Metric	Whole archive (#Entries)	EM structures (#Entries)
Clashscore	158937	4297
Ramachandran outliers	154571	4023
Sidechain outliers	154315	3826

The table below summarises the geometric issues observed across the polymeric chains and their fit to the map. The red, orange, yellow and green segments of the bar indicate the fraction of residues that contain outliers for ≥ 3 , 2, 1 and 0 types of geometric quality criteria respectively. A grey segment represents the fraction of residues that are not modelled. The numeric value for each fraction is indicated below the corresponding segment, with a dot representing fractions $\leq 5\%$. The upper red bar (where present) indicates the fraction of residues that have poor fit to the EM map (all-atom inclusion $< 40\%$). The numeric value is given above the bar.

Mol	Chain	Length	Quality of chain
1	A	1143	 81% 11% 8%
1	B	1143	 79% 13% 7%
1	C	1143	 81% 12% 8%
1	D	1143	 81% 11% 7%

2 Entry composition [i](#)

There are 8 unique types of molecules in this entry. The entry contains 33724 atoms, of which 0 are hydrogens and 0 are deuteriums.

In the tables below, the AltConf column contains the number of residues with at least one atom in alternate conformation and the Trace column contains the number of residues modelled with at most 2 atoms.

- Molecule 1 is a protein called Pyruvate carboxylase.

Mol	Chain	Residues	Atoms					AltConf	Trace
1	A	1057	Total	C	N	O	S	0	0
			8318	5275	1440	1572	31		
1	B	1058	Total	C	N	O	S	0	0
			8324	5278	1441	1574	31		
1	C	1057	Total	C	N	O	S	0	0
			8318	5275	1440	1572	31		
1	D	1058	Total	C	N	O	S	0	0
			8324	5278	1441	1574	31		

There are 28 discrepancies between the modelled and reference sequences:

Chain	Residue	Modelled	Actual	Comment	Reference
A	-5	VAL	-	expression tag	UNP A0A2A9IR05
A	-4	PRO	-	expression tag	UNP A0A2A9IR05
A	-3	ARG	-	expression tag	UNP A0A2A9IR05
A	-2	GLY	-	expression tag	UNP A0A2A9IR05
A	-1	SER	-	expression tag	UNP A0A2A9IR05
A	0	HIS	-	expression tag	UNP A0A2A9IR05
A	1055	ALA	THR	conflict	UNP A0A2A9IR05
B	-5	VAL	-	expression tag	UNP A0A2A9IR05
B	-4	PRO	-	expression tag	UNP A0A2A9IR05
B	-3	ARG	-	expression tag	UNP A0A2A9IR05
B	-2	GLY	-	expression tag	UNP A0A2A9IR05
B	-1	SER	-	expression tag	UNP A0A2A9IR05
B	0	HIS	-	expression tag	UNP A0A2A9IR05
B	1055	ALA	THR	conflict	UNP A0A2A9IR05
C	-5	VAL	-	expression tag	UNP A0A2A9IR05
C	-4	PRO	-	expression tag	UNP A0A2A9IR05
C	-3	ARG	-	expression tag	UNP A0A2A9IR05
C	-2	GLY	-	expression tag	UNP A0A2A9IR05
C	-1	SER	-	expression tag	UNP A0A2A9IR05
C	0	HIS	-	expression tag	UNP A0A2A9IR05
C	1055	ALA	THR	conflict	UNP A0A2A9IR05
D	-5	VAL	-	expression tag	UNP A0A2A9IR05

Continued on next page...

Continued from previous page...

Chain	Residue	Modelled	Actual	Comment	Reference
D	-4	PRO	-	expression tag	UNP A0A2A9IR05
D	-3	ARG	-	expression tag	UNP A0A2A9IR05
D	-2	GLY	-	expression tag	UNP A0A2A9IR05
D	-1	SER	-	expression tag	UNP A0A2A9IR05
D	0	HIS	-	expression tag	UNP A0A2A9IR05
D	1055	ALA	THR	conflict	UNP A0A2A9IR05

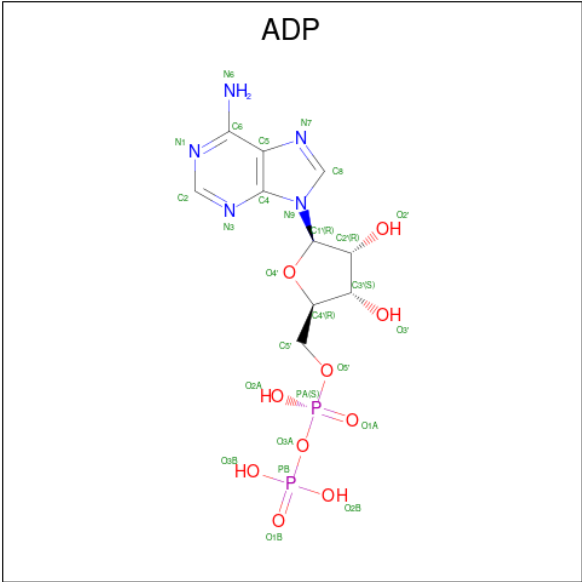
- Molecule 2 is MAGNESIUM ION (three-letter code: MG) (formula: Mg).

Mol	Chain	Residues	Atoms	AltConf
2	A	2	Total Mg 2 2	0
2	B	2	Total Mg 2 2	0
2	C	2	Total Mg 2 2	0
2	D	2	Total Mg 2 2	0

- Molecule 3 is MANGANESE (II) ION (three-letter code: MN) (formula: Mn).

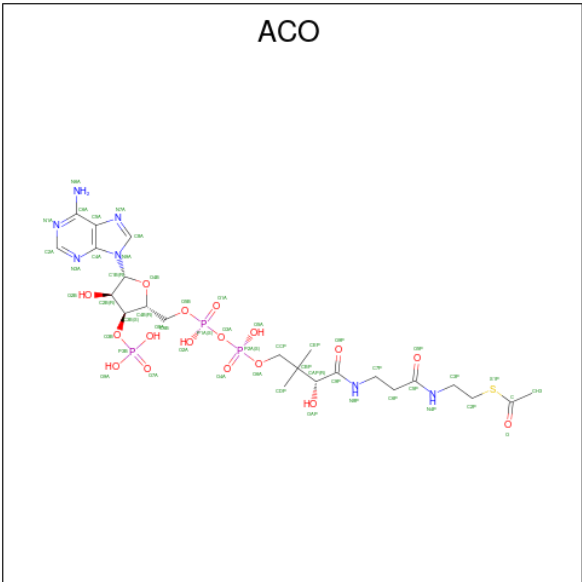
Mol	Chain	Residues	Atoms	AltConf
3	A	1	Total Mn 1 1	0
3	B	1	Total Mn 1 1	0
3	C	1	Total Mn 1 1	0
3	D	1	Total Mn 1 1	0

- Molecule 4 is ADENOSINE-5'-DIPHOSPHATE (three-letter code: ADP) (formula: C₁₀H₁₅N₅O₁₀P₂).



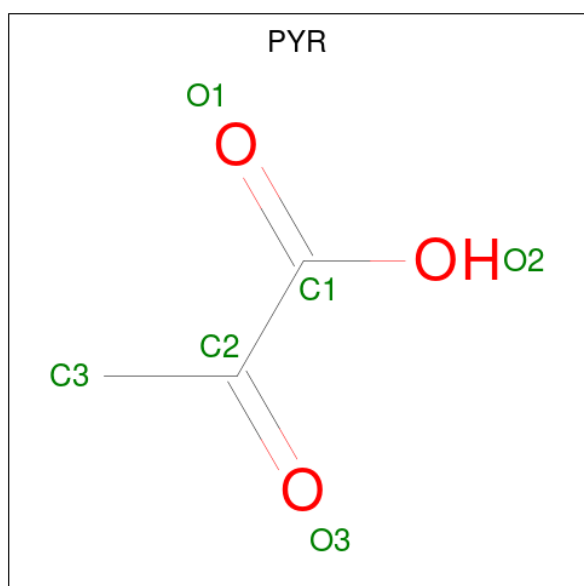
Mol	Chain	Residues	Atoms					AltConf
4	A	1	Total	C	N	O	P	0
			27	10	5	10	2	
4	B	1	Total	C	N	O	P	0
			27	10	5	10	2	
4	C	1	Total	C	N	O	P	0
			27	10	5	10	2	
4	D	1	Total	C	N	O	P	0
			27	10	5	10	2	

- Molecule 5 is ACETYL COENZYME *A (three-letter code: ACO) (formula: C₂₃H₃₈N₇O₁₇P₃S).



Mol	Chain	Residues	Atoms						AltConf
5	A	1	Total	C	N	O	P	S	0
			51	23	7	17	3	1	
5	B	1	Total	C	N	O	P	S	0
			51	23	7	17	3	1	
5	C	1	Total	C	N	O	P	S	0
			51	23	7	17	3	1	
5	D	1	Total	C	N	O	P	S	0
			51	23	7	17	3	1	

- Molecule 6 is PYRUVIC ACID (three-letter code: PYR) (formula: $C_3H_4O_3$).



Mol	Chain	Residues	Atoms			AltConf
6	A	1	Total	C	O	0
			6	3	3	
6	B	1	Total	C	O	0
			6	3	3	
6	C	1	Total	C	O	0
			6	3	3	
6	D	1	Total	C	O	0
			6	3	3	

- Molecule 7 is (2R,3R,3aS,5R,7aR,9R,10R,10aS,12R,14aR)-2,9-bis(6-amino-9H-purin-9-yl)octahydro-2H,7H-difuro[3,2-d:3',2'-j][1,3,7,9,2,8]tetraoxadiphosphacyclododecine-3,5,10,12-tetrol 5,12-dioxide (three-letter code: 2BA) (formula: $C_{20}H_{24}N_{10}O_{12}P_2$) (labeled as "Ligand of Interest" by depositor).



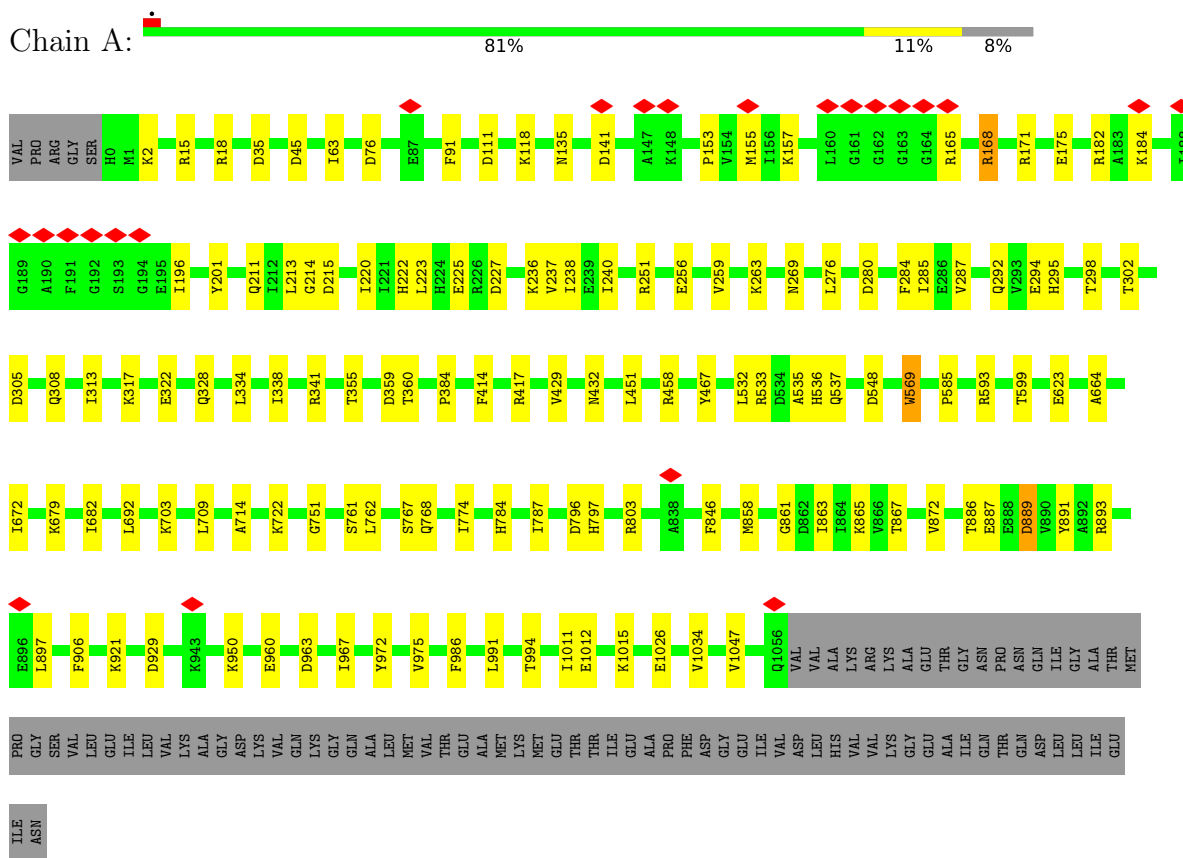
- Molecule 8 is water.



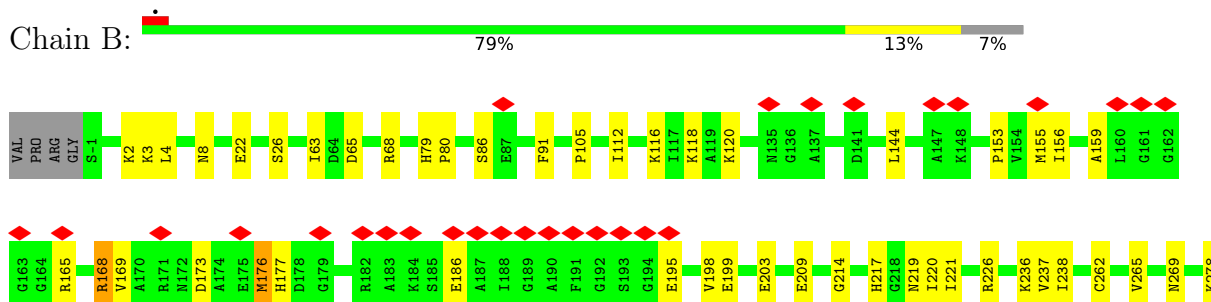
3 Residue-property plots

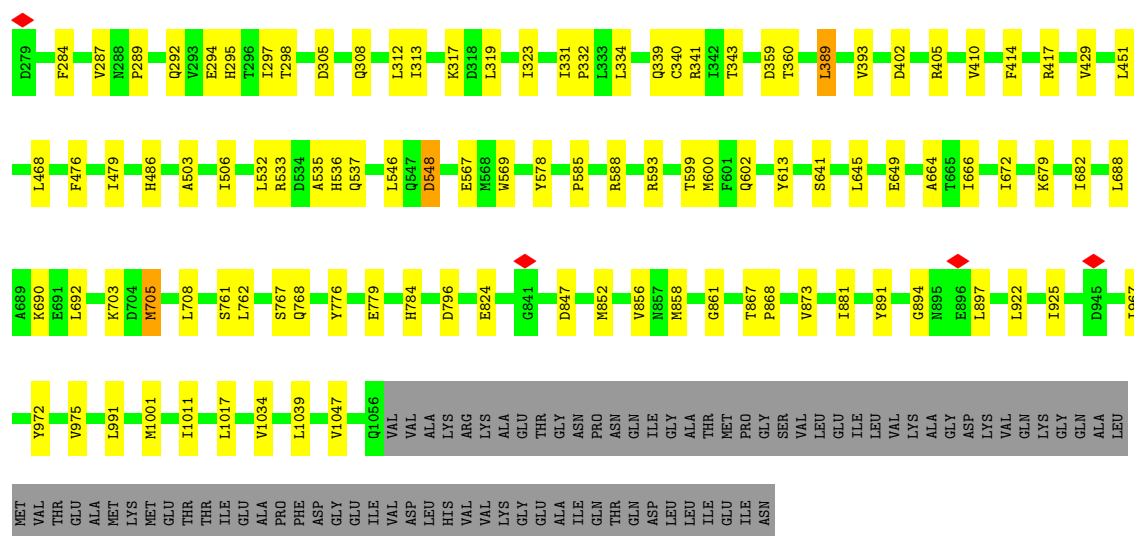
These plots are drawn for all protein, RNA, DNA and oligosaccharide chains in the entry. The first graphic for a chain summarises the proportions of the various outlier classes displayed in the second graphic. The second graphic shows the sequence view annotated by issues in geometry and atom inclusion in map density. Residues are color-coded according to the number of geometric quality criteria for which they contain at least one outlier: green = 0, yellow = 1, orange = 2 and red = 3 or more. A red diamond above a residue indicates a poor fit to the EM map for this residue (all-atom inclusion < 40%). Stretches of 2 or more consecutive residues without any outlier are shown as a green connector. Residues present in the sample, but not in the model, are shown in grey.

• Molecule 1: Pyruvate carboxylase

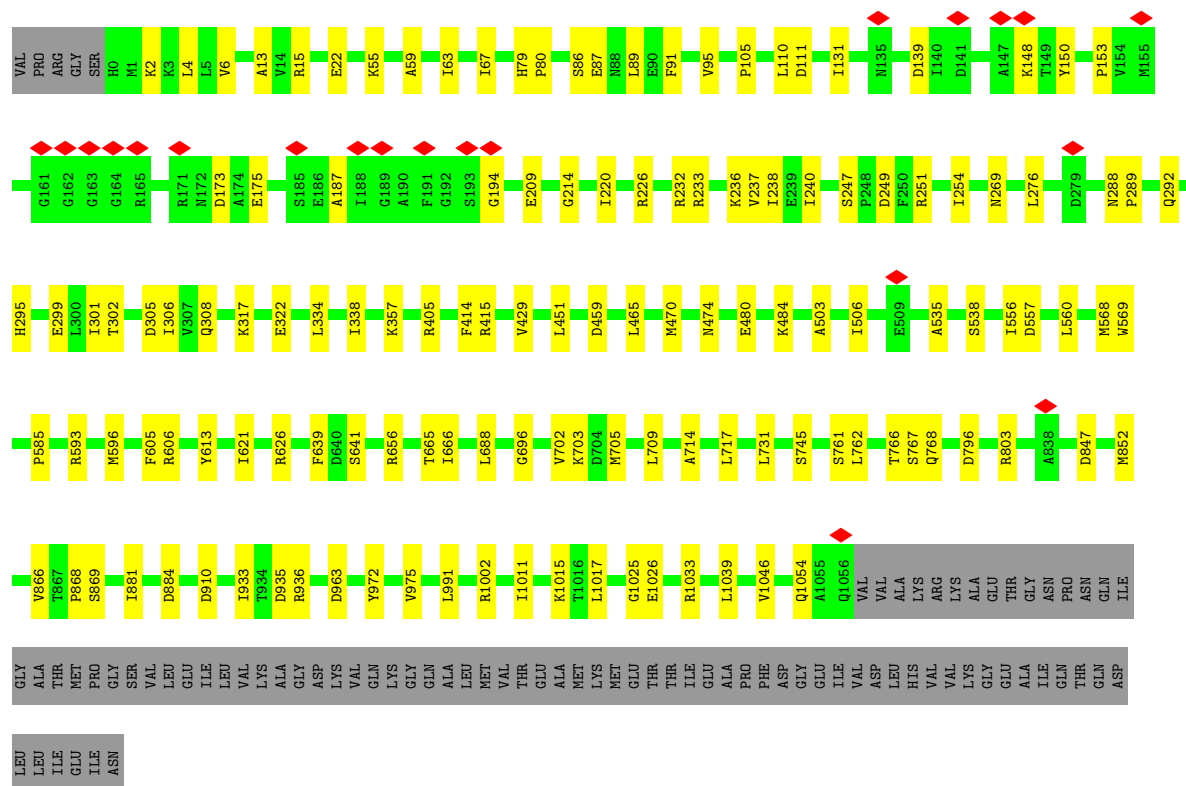
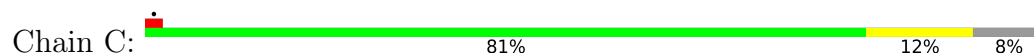


• Molecule 1: Pyruvate carboxylase

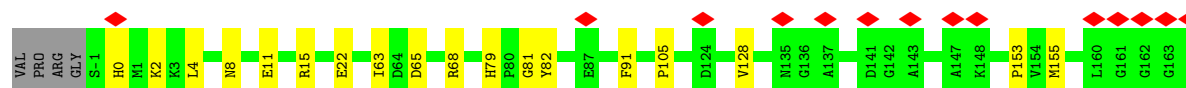
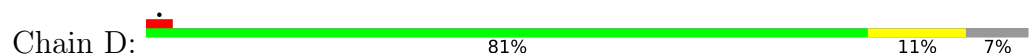




• Molecule 1: Pyruvate carboxylase



• Molecule 1: Pyruvate carboxylase





4 Experimental information

Property	Value	Source
EM reconstruction method	SINGLE PARTICLE	Depositor
Imposed symmetry	POINT, C1	Depositor
Number of particles used	2090256	Depositor
Resolution determination method	FSC 0.143 CUT-OFF	Depositor
CTF correction method	PHASE FLIPPING AND AMPLITUDE CORRECTION	Depositor
Microscope	FEI TITAN KRIOS	Depositor
Voltage (kV)	300	Depositor
Electron dose ($e^-/\text{\AA}^2$)	95	Depositor
Minimum defocus (nm)	2200	Depositor
Maximum defocus (nm)	3700	Depositor
Magnification	75000	Depositor
Image detector	FEI FALCON III (4k x 4k)	Depositor
Maximum map value	0.734	Depositor
Minimum map value	-0.286	Depositor
Average map value	0.004	Depositor
Map value standard deviation	0.030	Depositor
Recommended contour level	0.15	Depositor
Map size (Å)	286.44, 286.44, 286.44	wwPDB
Map dimensions	264, 264, 264	wwPDB
Map angles (°)	90.0, 90.0, 90.0	wwPDB
Pixel spacing (Å)	1.085, 1.085, 1.085	Depositor

5 Model quality [i](#)

5.1 Standard geometry [i](#)

Bond lengths and bond angles in the following residue types are not validated in this section: ADP, MN, PYR, KCX, ACO, 2BA, MG

The Z score for a bond length (or angle) is the number of standard deviations the observed value is removed from the expected value. A bond length (or angle) with $|Z| > 5$ is considered an outlier worth inspection. RMSZ is the root-mean-square of all Z scores of the bond lengths (or angles).

Mol	Chain	Bond lengths		Bond angles	
		RMSZ	# $ Z > 5$	RMSZ	# $ Z > 5$
1	A	0.25	0/8473	0.49	0/11464
1	B	0.30	2/8479 (0.0%)	0.58	5/11472 (0.0%)
1	C	0.26	0/8473	0.52	3/11464 (0.0%)
1	D	0.26	0/8479	0.50	2/11472 (0.0%)
All	All	0.27	2/33904 (0.0%)	0.52	10/45872 (0.0%)

All (2) bond length outliers are listed below:

Mol	Chain	Res	Type	Atoms	Z	Observed(Å)	Ideal(Å)
1	B	153	PRO	CG-CD	-9.96	1.17	1.50
1	B	153	PRO	CB-CG	-7.71	1.11	1.50

All (10) bond angle outliers are listed below:

Mol	Chain	Res	Type	Atoms	Z	Observed(°)	Ideal(°)
1	B	153	PRO	N-CD-CG	-18.29	75.76	103.20
1	B	153	PRO	CA-CB-CG	-15.82	73.93	104.00
1	B	153	PRO	CA-N-CD	-15.45	89.88	111.50
1	C	153	PRO	CA-N-CD	-11.04	96.05	111.50
1	B	153	PRO	CB-CG-CD	10.65	148.05	106.50
1	C	910	ASP	CB-CG-OD1	7.63	125.17	118.30
1	C	153	PRO	N-CD-CG	-6.90	92.85	103.20
1	D	897	LEU	CA-CB-CG	5.46	127.85	115.30
1	B	176	MET	CB-CG-SD	5.33	128.40	112.40
1	D	858	MET	CB-CG-SD	5.20	128.01	112.40

There are no chirality outliers.

There are no planarity outliers.

5.2 Too-close contacts ⓘ

In the following table, the Non-H and H(model) columns list the number of non-hydrogen atoms and hydrogen atoms in the chain respectively. The H(added) column lists the number of hydrogen atoms added and optimized by MolProbity. The Clashes column lists the number of clashes within the asymmetric unit, whereas Symm-Clashes lists symmetry-related clashes.

Mol	Chain	Non-H	H(model)	H(added)	Clashes	Symm-Clashes
1	A	8318	0	8260	69	0
1	B	8324	0	8265	80	0
1	C	8318	0	8260	73	0
1	D	8324	0	8266	68	0
2	A	2	0	0	0	0
2	B	2	0	0	0	0
2	C	2	0	0	0	0
2	D	2	0	0	0	0
3	A	1	0	0	0	0
3	B	1	0	0	0	0
3	C	1	0	0	0	0
3	D	1	0	0	0	0
4	A	27	0	12	0	0
4	B	27	0	12	1	0
4	C	27	0	12	0	0
4	D	27	0	12	0	0
5	A	51	0	34	0	0
5	B	51	0	34	1	0
5	C	51	0	34	3	0
5	D	51	0	34	3	0
6	A	6	0	3	1	0
6	B	6	0	3	2	0
6	C	6	0	3	1	0
6	D	6	0	3	1	0
7	A	44	0	22	0	0
7	C	44	0	22	1	0
8	A	1	0	0	0	0
8	B	1	0	0	0	0
8	C	1	0	0	0	0
8	D	1	0	0	0	0
All	All	33724	0	33291	290	0

The all-atom clashscore is defined as the number of clashes found per 1000 atoms (including hydrogen atoms). The all-atom clashscore for this structure is 4.

All (290) close contacts within the same asymmetric unit are listed below, sorted by their clash magnitude.

Atom-1	Atom-2	Interatomic distance (Å)	Clash overlap (Å)
1:D:569:TRP:HE1	1:D:585:PRO:HB2	1.55	0.71
1:B:569:TRP:HE1	1:B:585:PRO:HB2	1.60	0.65
1:D:238:ILE:HD13	1:D:340:CYS:HB3	1.78	0.65
1:B:105:PRO:HG3	1:B:289:PRO:HB2	1.80	0.64
1:A:569:TRP:HE1	1:A:585:PRO:HB2	1.62	0.62
1:A:893:ARG:HH12	1:A:897:LEU:HD22	1.65	0.61
1:B:238:ILE:HG12	1:B:340:CYS:HB3	1.83	0.61
1:D:443:THR:O	1:D:447:ASN:ND2	2.34	0.60
1:C:538:SER:HB3	1:C:766:THR:HG22	1.83	0.60
1:A:15:ARG:NH2	1:A:305:ASP:OD1	2.36	0.59
1:B:972:TYR:HB3	1:B:975:VAL:HB	1.84	0.59
1:C:105:PRO:HG3	1:C:289:PRO:HB2	1.83	0.59
1:A:236:LYS:O	1:A:341:ARG:NH2	2.36	0.59
1:C:470:MET:SD	1:C:474:ASN:ND2	2.72	0.59
1:B:159:ALA:HB3	1:B:195:GLU:HG3	1.84	0.58
1:D:292:GLN:NE2	1:D:294:GLU:OE2	2.36	0.58
1:C:935:ASP:OD1	1:C:936:ARG:N	2.35	0.57
1:A:292:GLN:O	1:A:295:HIS:ND1	2.38	0.57
1:A:429:VAL:HG22	1:A:451:LEU:HD13	1.88	0.56
1:B:922:LEU:HA	1:B:925:ILE:HD12	1.85	0.56
1:C:459:ASP:OD1	1:C:459:ASP:N	2.37	0.56
1:C:569:TRP:HE1	1:C:585:PRO:HB2	1.69	0.56
1:D:128:VAL:HG21	1:D:261:LEU:HB2	1.88	0.56
1:A:45:ASP:O	1:C:1015:LYS:NZ	2.39	0.55
1:D:767:SER:OG	1:D:768:GLN:N	2.39	0.55
1:B:236:LYS:O	1:B:341:ARG:NH2	2.40	0.55
1:C:847:ASP:OD1	1:C:847:ASP:N	2.39	0.55
1:D:847:ASP:N	1:D:847:ASP:OD1	2.39	0.55
1:B:284:PHE:HE1	1:B:287:VAL:HG23	1.72	0.55
1:C:214:GLY:HA3	1:C:220:ILE:HD13	1.89	0.55
1:D:153:PRO:HB2	1:D:201:TYR:HB3	1.88	0.55
1:D:752:VAL:O	1:D:783:ARG:NH1	2.40	0.55
1:A:863:ILE:O	1:A:865:LYS:NZ	2.40	0.54
1:C:535:ALA:HB1	1:C:762:LEU:HB3	1.88	0.54
1:C:767:SER:OG	1:C:768:GLN:N	2.41	0.54
1:C:557:ASP:HB2	1:C:596:MET:HG2	1.89	0.54
1:B:613:TYR:HD1	1:B:868:PRO:HB3	1.73	0.54
1:B:847:ASP:N	1:B:847:ASP:OD1	2.41	0.54
1:D:626:ARG:NH2	1:D:963:ASP:OD2	2.41	0.54
1:D:972:TYR:HB3	1:D:975:VAL:HB	1.89	0.54
1:A:767:SER:OG	1:A:768:GLN:N	2.41	0.54
1:B:237:VAL:HG12	1:B:238:ILE:HG13	1.90	0.54

Continued on next page...

Continued from previous page...

Atom-1	Atom-2	Interatomic distance (Å)	Clash overlap (Å)
1:C:63:ILE:HG23	1:C:91:PHE:HD1	1.73	0.54
1:C:415:ARG:NH2	5:C:1206:ACO:O9P	2.41	0.53
1:D:663:GLU:HG2	1:D:699:ILE:HB	1.90	0.53
1:A:308:GLN:OE1	1:C:405:ARG:NH2	2.42	0.53
1:A:432:ASN:HD22	1:A:451:LEU:HD21	1.72	0.53
1:A:63:ILE:HG23	1:A:91:PHE:HD1	1.74	0.53
1:B:221:ILE:HD12	1:B:331:ILE:HD11	1.91	0.53
1:A:761:SER:O	1:A:803:ARG:NH1	2.41	0.53
1:B:319:LEU:HD23	1:B:323:ILE:HD12	1.90	0.53
1:B:334:LEU:HD22	1:D:334:LEU:HD22	1.90	0.53
1:B:767:SER:OG	1:B:768:GLN:N	2.42	0.53
1:C:666:ILE:HG23	1:C:688:LEU:HD23	1.91	0.53
1:C:22:GLU:OE1	1:C:308:GLN:NE2	2.42	0.52
1:A:679:LYS:NZ	1:A:861:GLY:O	2.36	0.52
1:B:761:SER:OG	1:B:796:ASP:OD1	2.21	0.52
1:C:972:TYR:HB3	1:C:975:VAL:HB	1.92	0.52
1:B:8:ASN:ND2	1:B:80:PRO:O	2.43	0.52
1:B:165:ARG:O	1:B:168:ARG:NH2	2.43	0.52
1:C:613:TYR:HD1	1:C:868:PRO:HB3	1.74	0.52
1:C:852:MET:HG2	1:C:881:ILE:HG12	1.92	0.52
1:B:503:ALA:HA	1:B:506:ILE:HD12	1.92	0.52
1:B:666:ILE:HG23	1:B:688:LEU:HD23	1.90	0.51
1:C:593:ARG:NH2	1:C:596:MET:O	2.44	0.51
1:B:402:ASP:OD1	1:B:405:ARG:NH2	2.43	0.51
1:D:503:ALA:HA	1:D:506:ILE:HD12	1.91	0.51
1:A:276:LEU:HG	1:A:285:ILE:HD13	1.92	0.51
1:A:991:LEU:HD13	1:A:1011:ILE:HA	1.92	0.51
1:B:679:LYS:NZ	1:B:861:GLY:O	2.38	0.51
1:B:664:ALA:HB1	1:B:692:LEU:HD22	1.92	0.51
1:C:745:SER:OG	7:C:1201:2BA:O2P1	2.28	0.51
1:B:199:GLU:OE2	4:B:1203:ADP:N6	2.44	0.51
1:C:237:VAL:HG12	1:C:238:ILE:HG13	1.93	0.51
1:A:972:TYR:HB3	1:A:975:VAL:HB	1.93	0.51
1:B:112:ILE:HA	1:B:118:LYS:HD2	1.93	0.50
1:A:593:ARG:NH2	1:A:599:THR:O	2.42	0.50
1:B:63:ILE:HG23	1:B:91:PHE:HD1	1.77	0.50
1:B:214:GLY:HA3	1:B:220:ILE:HD13	1.94	0.50
1:B:535:ALA:HB1	1:B:762:LEU:HB3	1.93	0.50
1:D:664:ALA:HB1	1:D:692:LEU:HD22	1.93	0.50
1:B:894:GLY:HA2	1:B:897:LEU:HD23	1.94	0.50
1:A:334:LEU:HD22	1:C:334:LEU:HD22	1.93	0.50

Continued on next page...

Continued from previous page...

Atom-1	Atom-2	Interatomic distance (Å)	Clash overlap (Å)
1:D:11:GLU:OE2	1:D:82:TYR:OH	2.30	0.50
1:A:227:ASP:HB3	1:A:240:ILE:HG13	1.93	0.49
1:C:247:SER:OG	1:C:249:ASP:OD1	2.29	0.49
1:C:626:ARG:NH2	1:C:963:ASP:OD2	2.44	0.49
1:A:213:LEU:HD12	1:A:223:LEU:HD21	1.93	0.49
1:A:1012:GLU:HB3	1:A:1015:LYS:HB2	1.95	0.49
1:B:393:VAL:HG21	1:B:410:VAL:HG11	1.93	0.49
1:C:656:ARG:HD2	1:C:696:GLY:HA3	1.94	0.49
1:A:623:GLU:HG2	1:A:967:ILE:HD13	1.93	0.49
1:A:211:GLN:HG2	1:A:223:LEU:HD12	1.93	0.49
1:B:776:TYR:HA	1:B:779:GLU:HG2	1.94	0.49
1:D:417:ARG:NH1	5:D:1205:ACO:O9A	2.46	0.49
1:B:65:ASP:OD1	1:B:68:ARG:NH2	2.46	0.49
1:C:15:ARG:NH2	1:C:305:ASP:OD1	2.46	0.49
1:C:131:ILE:HD11	1:C:276:LEU:HD23	1.94	0.49
1:A:722:LYS:NZ	1:A:751:GLY:O	2.41	0.48
1:B:991:LEU:HD13	1:B:1011:ILE:HA	1.95	0.48
1:A:171:ARG:N	1:A:175:GLU:OE2	2.43	0.48
1:A:761:SER:N	1:A:796:ASP:OD1	2.44	0.48
1:D:546:LEU:HD13	1:D:588:ARG:HG3	1.96	0.48
1:B:22:GLU:OE1	1:B:308:GLN:NE2	2.45	0.48
1:B:144:LEU:HD21	1:B:177:HIS:HE1	1.78	0.48
1:C:55:LYS:O	1:C:59:ALA:N	2.45	0.48
1:C:641:SER:HB3	1:C:868:PRO:HD2	1.96	0.48
1:D:215:ASP:HB3	1:D:313:ILE:HG12	1.94	0.48
1:D:247:SER:OG	1:D:249:ASP:OD2	2.30	0.48
1:C:761:SER:O	1:C:803:ARG:NH1	2.45	0.48
1:B:313:ILE:HD11	1:B:319:LEU:HD21	1.96	0.47
1:A:214:GLY:O	1:A:269:ASN:N	2.47	0.47
1:A:292:GLN:NE2	1:A:294:GLU:OE2	2.44	0.47
1:D:593:ARG:NH2	1:D:596:MET:O	2.41	0.47
1:D:187:ALA:O	1:D:192:GLY:N	2.44	0.47
1:A:184:LYS:HD3	1:A:196:ILE:HG21	1.96	0.47
1:A:533:ARG:NH1	1:A:537:GLN:OE1	2.47	0.47
1:C:105:PRO:HG2	1:C:110:LEU:HG	1.96	0.47
1:C:301:ILE:HG13	1:C:302:THR:HG23	1.97	0.47
1:D:65:ASP:OD1	1:D:68:ARG:NH2	2.44	0.47
1:A:535:ALA:HB1	1:A:762:LEU:HB3	1.96	0.47
1:A:220:ILE:HD12	1:A:263:LYS:HA	1.96	0.47
1:A:225:GLU:OE2	1:A:251:ARG:NE	2.47	0.47
1:A:240:ILE:HG22	1:A:338:ILE:HG12	1.97	0.47

Continued on next page...

Continued from previous page...

Atom-1	Atom-2	Interatomic distance (Å)	Clash overlap (Å)
1:C:556:ILE:HG23	1:C:560:LEU:HD12	1.95	0.47
1:D:656:ARG:HD2	1:D:696:GLY:HA3	1.95	0.47
1:B:429:VAL:HG22	1:B:451:LEU:HD13	1.95	0.47
1:C:175:GLU:OE1	1:C:175:GLU:N	2.41	0.47
1:C:1017:LEU:HD22	1:C:1039:LEU:HD11	1.96	0.47
1:B:593:ARG:NH2	1:B:599:THR:O	2.38	0.47
1:B:312:LEU:HD22	1:B:317:LYS:HD2	1.97	0.47
1:A:153:PRO:HB2	1:A:201:TYR:HB3	1.97	0.46
1:C:4:LEU:HD21	1:C:79:HIS:HB2	1.97	0.46
1:D:317:LYS:HB3	1:D:322:GLU:HB2	1.97	0.46
1:D:533:ARG:NH2	1:D:534:ASP:OD2	2.48	0.46
1:B:867:THR:OG1	6:B:1206:PYR:O2	2.33	0.46
1:B:80:PRO:HB2	1:B:86:SER:HA	1.96	0.46
1:B:292:GLN:NE2	1:B:294:GLU:OE2	2.47	0.46
1:D:242:PRO:HG3	1:D:333:LEU:HD11	1.98	0.46
1:C:240:ILE:HG22	1:C:338:ILE:HG23	1.97	0.46
1:C:606:ARG:NH1	6:C:1207:PYR:O1	2.48	0.46
1:D:22:GLU:OE1	1:D:308:GLN:NE2	2.45	0.46
1:B:537:GLN:NE2	6:B:1206:PYR:O3	2.49	0.46
1:C:761:SER:OG	1:C:796:ASP:OD1	2.28	0.46
1:D:236:LYS:O	1:D:341:ARG:NH2	2.48	0.46
1:B:3:LYS:HG3	1:B:26:SER:HB2	1.97	0.46
1:C:187:ALA:HB1	1:C:194:GLY:HA3	1.98	0.46
1:D:459:ASP:OD1	1:D:459:ASP:N	2.41	0.46
1:A:1034:VAL:HG22	1:A:1047:VAL:HG22	1.97	0.46
1:C:503:ALA:HA	1:C:506:ILE:HD12	1.98	0.46
1:D:887:GLU:O	1:D:891:TYR:HB2	2.16	0.46
1:B:165:ARG:NH1	1:B:186:GLU:OE1	2.49	0.45
1:A:664:ALA:HB1	1:A:692:LEU:HD22	1.98	0.45
1:C:2:LYS:HB2	1:C:2:LYS:HE2	1.75	0.45
1:C:80:PRO:HB2	1:C:86:SER:HA	1.97	0.45
1:C:761:SER:N	1:C:796:ASP:OD1	2.50	0.45
1:D:237:VAL:HG12	1:D:238:ILE:HG12	1.98	0.45
1:D:840:VAL:HG23	1:D:842:LEU:HG	1.97	0.45
1:B:532:LEU:O	1:B:536:HIS:NE2	2.47	0.45
1:C:317:LYS:HB3	1:C:322:GLU:HB2	1.97	0.45
1:D:761:SER:OG	1:D:796:ASP:OD1	2.25	0.45
1:D:852:MET:HG2	1:D:881:ILE:HG12	1.97	0.45
1:A:887:GLU:O	1:A:891:TYR:HB2	2.17	0.45
1:D:155:MET:HB2	1:D:169:VAL:HA	1.99	0.45
1:A:317:LYS:HB3	1:A:322:GLU:HB2	1.99	0.45

Continued on next page...

Continued from previous page...

Atom-1	Atom-2	Interatomic distance (Å)	Clash overlap (Å)
1:A:867:THR:OG1	6:A:1206:PYR:O2	2.35	0.45
1:B:214:GLY:O	1:B:269:ASN:N	2.50	0.45
1:A:237:VAL:HG12	1:A:238:ILE:HG13	1.99	0.44
1:D:523:LYS:O	1:D:783:ARG:NE	2.45	0.44
1:B:116:LYS:HB2	1:B:159:ALA:HA	1.98	0.44
1:B:343:THR:HG22	1:B:389:LEU:HA	2.00	0.44
1:D:63:ILE:HG23	1:D:91:PHE:HD1	1.82	0.44
1:A:18:ARG:HG3	5:C:1206:ACO:HH31	1.99	0.44
1:A:921:LYS:HE2	1:A:921:LYS:HB2	1.87	0.44
1:D:491:ARG:NE	1:D:801:ASP:OD2	2.44	0.44
1:A:355:THR:HG21	1:A:384:PRO:HG3	1.99	0.44
1:B:2:LYS:HB2	1:B:2:LYS:HE2	1.77	0.44
1:C:209:GLU:OE2	1:C:236:LYS:NZ	2.39	0.44
1:A:15:ARG:O	1:A:15:ARG:NH1	2.51	0.44
1:C:991:LEU:HD13	1:C:1011:ILE:HA	2.00	0.44
1:A:548:ASP:OD1	1:A:994:THR:OG1	2.36	0.44
1:D:893:ARG:O	1:D:893:ARG:NH1	2.50	0.44
1:A:118:LYS:HB2	1:A:118:LYS:HE3	1.84	0.44
1:B:155:MET:HG3	1:B:169:VAL:HG22	2.00	0.44
1:B:690:LYS:HA	1:B:690:LYS:HD3	1.84	0.44
1:D:15:ARG:NH2	1:D:305:ASP:OD1	2.50	0.44
1:B:672:ILE:HB	1:B:682:ILE:HG13	1.99	0.43
1:D:432:ASN:HD22	1:D:451:LEU:HD21	1.82	0.43
1:B:203:GLU:O	1:B:278:LYS:NZ	2.39	0.43
1:B:533:ARG:NH1	1:B:537:GLN:OE1	2.51	0.43
1:B:705:MET:N	1:B:705:MET:SD	2.84	0.43
1:B:967:ILE:HD12	1:B:967:ILE:HA	1.91	0.43
1:C:214:GLY:O	1:C:269:ASN:N	2.50	0.43
1:B:173:ASP:O	1:B:177:HIS:ND1	2.37	0.43
1:B:856:VAL:HG12	1:B:873:VAL:HG13	2.00	0.43
1:C:484:LYS:HB3	1:C:1002:ARG:HG3	2.01	0.43
1:D:709:LEU:HG	1:D:714:ALA:HB2	2.00	0.43
1:D:0:HIS:O	1:D:2:LYS:NZ	2.51	0.43
1:B:645:LEU:HD23	1:B:649:GLU:HG3	2.00	0.43
1:C:6:VAL:HG11	1:C:13:ALA:HA	2.01	0.43
1:D:647:GLN:NE2	1:D:911:LEU:O	2.51	0.43
1:D:804:LYS:HE3	1:D:804:LYS:HB2	1.82	0.43
1:D:825:MET:HG2	1:D:853:TYR:CE1	2.54	0.43
1:B:567:GLU:HA	1:B:602:GLN:HB3	2.01	0.43
1:A:155:MET:HG2	1:A:157:LYS:HG3	2.00	0.43
1:C:305:ASP:HB3	1:C:308:GLN:HB2	2.00	0.43

Continued on next page...

Continued from previous page...

Atom-1	Atom-2	Interatomic distance (Å)	Clash overlap (Å)
1:D:393:VAL:HG21	1:D:410:VAL:HG11	2.00	0.43
1:B:156:ILE:HG13	1:B:198:VAL:HG22	2.00	0.43
1:C:639:PHE:HB3	1:C:665:THR:HB	2.01	0.43
5:D:1205:ACO:H32	5:D:1205:ACO:H61	1.87	0.43
1:A:1026:GLU:H	1:A:1026:GLU:HG3	1.64	0.43
1:B:548:ASP:N	1:B:548:ASP:OD1	2.52	0.43
1:C:89:LEU:HD22	1:C:111:ASP:HB3	2.01	0.43
5:C:1206:ACO:H2B	5:C:1206:ACO:H8A	1.56	0.43
1:B:641:SER:HB2	1:B:868:PRO:HD2	2.01	0.42
1:C:429:VAL:HG22	1:C:451:LEU:HD13	2.00	0.42
1:D:4:LEU:HD21	1:D:79:HIS:HB2	2.02	0.42
5:D:1205:ACO:H8A	5:D:1205:ACO:H2B	1.63	0.42
1:C:688:LEU:HD12	1:C:688:LEU:HA	1.94	0.42
1:A:222:HIS:H	1:A:328:GLN:HE22	1.67	0.42
1:C:465:LEU:HB3	1:C:1046:VAL:HG21	2.01	0.42
1:A:929:ASP:OD1	1:A:929:ASP:N	2.53	0.42
1:B:262:CYS:HA	1:B:265:VAL:HG12	2.01	0.42
1:D:954:GLU:HG3	1:D:960:GLU:HA	2.02	0.42
1:A:2:LYS:HE2	1:A:2:LYS:HB2	1.71	0.42
1:C:87:GLU:OE2	1:C:288:ASN:ND2	2.52	0.42
1:B:468:LEU:HD22	1:B:1001:MET:HG3	2.01	0.42
1:C:251:ARG:HA	1:C:254:ILE:HD12	2.01	0.42
1:C:933:ILE:HG22	1:C:935:ASP:H	1.85	0.42
1:D:922:LEU:HA	1:D:925:ILE:HD12	2.02	0.42
1:D:1006:LYS:HZ1	1:D:1018:SER:HB3	1.85	0.42
1:A:298:THR:O	1:A:302:THR:OG1	2.32	0.42
1:B:297:ILE:HG23	1:B:339:GLN:HB2	2.01	0.42
1:C:209:GLU:O	1:C:226:ARG:N	2.53	0.42
1:D:537:GLN:NE2	6:D:1206:PYR:O2	2.53	0.42
1:A:467:TYR:HB2	1:A:986:PHE:HB3	2.01	0.41
1:B:852:MET:HG2	1:B:881:ILE:HG12	2.01	0.41
1:C:232:ARG:HG2	1:C:233:ARG:HG2	2.00	0.41
1:D:535:ALA:HB1	1:D:762:LEU:HB3	2.01	0.41
1:D:623:GLU:OE2	1:D:626:ARG:NH2	2.39	0.41
1:A:532:LEU:O	1:A:536:HIS:NE2	2.51	0.41
1:A:886:THR:HB	1:A:889:ASP:HB2	2.02	0.41
1:B:360:THR:HB	1:B:417:ARG:HB2	2.02	0.41
1:C:709:LEU:HG	1:C:714:ALA:HB2	2.02	0.41
1:B:331:ILE:HA	1:B:332:PRO:HD3	1.94	0.41
1:D:484:LYS:HB3	1:D:1002:ARG:HG3	2.02	0.41
1:D:967:ILE:HD12	1:D:967:ILE:HA	1.90	0.41

Continued on next page...

Continued from previous page...

Atom-1	Atom-2	Interatomic distance (Å)	Clash overlap (Å)
1:A:256:GLU:HA	1:A:259:VAL:HG12	2.03	0.41
1:C:148:LYS:NZ	1:C:173:ASP:OD1	2.47	0.41
1:D:945:ASP:HB3	1:D:948:THR:HG22	2.02	0.41
1:C:292:GLN:O	1:C:295:HIS:ND1	2.49	0.41
1:A:709:LEU:HG	1:A:714:ALA:HB2	2.03	0.41
1:B:292:GLN:O	1:B:295:HIS:ND1	2.52	0.41
1:B:1017:LEU:HD22	1:B:1039:LEU:HD11	2.03	0.41
1:C:67:ILE:HD11	1:C:95:VAL:HA	2.03	0.41
1:D:1032:ASN:HA	1:D:1049:ASN:HA	2.03	0.41
1:A:774:ILE:HD12	1:A:774:ILE:HA	1.87	0.41
1:A:284:PHE:HE1	1:A:287:VAL:HG23	1.86	0.41
1:A:360:THR:HB	1:A:417:ARG:HB2	2.03	0.41
1:C:866:VAL:O	1:C:869:SER:N	2.54	0.41
1:D:8:ASN:HD22	1:D:81:GLY:HA3	1.86	0.41
1:B:226:ARG:NH1	1:B:298:THR:OG1	2.50	0.41
1:B:546:LEU:HD13	1:B:588:ARG:HG3	2.02	0.41
1:C:1026:GLU:H	1:C:1026:GLU:HG3	1.65	0.41
1:D:682:ILE:H	1:D:682:ILE:HG13	1.64	0.41
1:D:787:ILE:HD12	1:D:787:ILE:HA	1.95	0.41
1:D:872:VAL:HG21	1:D:906:PHE:HB2	2.03	0.41
1:B:476:PHE:HB3	1:B:479:ILE:HG12	2.02	0.41
1:D:532:LEU:O	1:D:536:HIS:NE2	2.45	0.41
1:A:165:ARG:O	1:A:168:ARG:NH2	2.55	0.40
1:A:872:VAL:HG21	1:A:906:PHE:HB2	2.02	0.40
1:A:950:LYS:NZ	1:A:960:GLU:OE2	2.53	0.40
1:B:305:ASP:HB3	1:B:308:GLN:HB2	2.02	0.40
1:C:702:VAL:HB	1:C:731:LEU:HD12	2.02	0.40
1:D:240:ILE:HG22	1:D:338:ILE:HG23	2.03	0.40
1:D:774:ILE:HD12	1:D:774:ILE:HA	1.86	0.40
1:A:672:ILE:HB	1:A:682:ILE:HG13	2.02	0.40
1:A:787:ILE:HD12	1:A:787:ILE:HA	1.98	0.40
5:B:1205:ACO:H8A	5:B:1205:ACO:H2B	1.63	0.40
1:D:105:PRO:HG2	1:D:289:PRO:HB2	2.03	0.40
1:A:215:ASP:HB3	1:A:313:ILE:HG12	2.02	0.40
1:B:4:LEU:HD21	1:B:79:HIS:HB2	2.02	0.40
1:B:708:LEU:HD21	1:B:824:GLU:HG2	2.03	0.40
1:C:605:PHE:HZ	1:C:621:ILE:HG23	1.85	0.40
1:A:308:GLN:HE21	1:A:308:GLN:HB2	1.56	0.40
1:B:209:GLU:O	1:B:226:ARG:N	2.53	0.40
1:B:1034:VAL:HG22	1:B:1047:VAL:HG22	2.02	0.40
1:C:1025:GLY:O	1:C:1033:ARG:NH1	2.54	0.40

Continued on next page...

Continued from previous page...

Atom-1	Atom-2	Interatomic distance (Å)	Clash overlap (Å)
1:D:679:LYS:NZ	1:D:861:GLY:O	2.37	0.40
1:C:299:GLU:HG3	1:C:306:ILE:HD12	2.04	0.40

There are no symmetry-related clashes.

5.3 Torsion angles [i](#)

5.3.1 Protein backbone [i](#)

In the following table, the Percentiles column shows the percent Ramachandran outliers of the chain as a percentile score with respect to all PDB entries followed by that with respect to all EM entries.

The Analysed column shows the number of residues for which the backbone conformation was analysed, and the total number of residues.

Mol	Chain	Analysed	Favoured	Allowed	Outliers	Percentiles	
1	A	1054/1143 (92%)	1028 (98%)	26 (2%)	0	100	100
1	B	1055/1143 (92%)	1021 (97%)	34 (3%)	0	100	100
1	C	1054/1143 (92%)	1026 (97%)	28 (3%)	0	100	100
1	D	1055/1143 (92%)	1018 (96%)	37 (4%)	0	100	100
All	All	4218/4572 (92%)	4093 (97%)	125 (3%)	0	100	100

There are no Ramachandran outliers to report.

5.3.2 Protein sidechains [i](#)

In the following table, the Percentiles column shows the percent sidechain outliers of the chain as a percentile score with respect to all PDB entries followed by that with respect to all EM entries.

The Analysed column shows the number of residues for which the sidechain conformation was analysed, and the total number of residues.

Mol	Chain	Analysed	Rotameric	Outliers	Percentiles	
1	A	884/954 (93%)	866 (98%)	18 (2%)	55	76
1	B	885/954 (93%)	869 (98%)	16 (2%)	59	78
1	C	884/954 (93%)	874 (99%)	10 (1%)	73	85

Continued on next page...

Continued from previous page...

Mol	Chain	Analysed	Rotameric	Outliers	Percentiles	
1	D	885/954 (93%)	873 (99%)	12 (1%)	67	82
All	All	3538/3816 (93%)	3482 (98%)	56 (2%)	64	79

All (56) residues with a non-rotameric sidechain are listed below:

Mol	Chain	Res	Type
1	A	35	ASP
1	A	76	ASP
1	A	111	ASP
1	A	135	ASN
1	A	141	ASP
1	A	168	ARG
1	A	182	ARG
1	A	280	ASP
1	A	359	ASP
1	A	414	PHE
1	A	458	ARG
1	A	569	TRP
1	A	784	HIS
1	A	797	HIS
1	A	846	PHE
1	A	858	MET
1	A	889	ASP
1	A	963	ASP
1	B	120	LYS
1	B	168	ARG
1	B	176	MET
1	B	217	HIS
1	B	219	ASN
1	B	359	ASP
1	B	389	LEU
1	B	414	PHE
1	B	486	HIS
1	B	548	ASP
1	B	578	TYR
1	B	600	MET
1	B	705	MET
1	B	784	HIS
1	B	858	MET
1	B	891	TYR
1	C	139	ASP
1	C	150	TYR

Continued on next page...

Continued from previous page...

Mol	Chain	Res	Type
1	C	357	LYS
1	C	414	PHE
1	C	480	GLU
1	C	568	MET
1	C	705	MET
1	C	717	LEU
1	C	884	ASP
1	C	1054	GLN
1	D	165	ARG
1	D	172	ASN
1	D	225	GLU
1	D	280	ASP
1	D	340	CYS
1	D	414	PHE
1	D	606	ARG
1	D	609	ASN
1	D	656	ARG
1	D	784	HIS
1	D	891	TYR
1	D	928	LYS

Sometimes sidechains can be flipped to improve hydrogen bonding and reduce clashes. There are no such sidechains identified.

5.3.3 RNA ⓘ

There are no RNA molecules in this entry.

5.4 Non-standard residues in protein, DNA, RNA chains ⓘ

4 non-standard protein/DNA/RNA residues are modelled in this entry.

In the following table, the Counts columns list the number of bonds (or angles) for which Mogul statistics could be retrieved, the number of bonds (or angles) that are observed in the model and the number of bonds (or angles) that are defined in the Chemical Component Dictionary. The Link column lists molecule types, if any, to which the group is linked. The Z score for a bond length (or angle) is the number of standard deviations the observed value is removed from the expected value. A bond length (or angle) with $|Z| > 2$ is considered an outlier worth inspection. RMSZ is the root-mean-square of all Z scores of the bond lengths (or angles).

Mol	Type	Chain	Res	Link	Bond lengths			Bond angles		
					Counts	RMSZ	# Z > 2	Counts	RMSZ	# Z > 2
1	KCX	A	703	1,3	9,11,12	0.83	0	5,12,14	1.61	1 (20%)
1	KCX	D	703	1,3	9,11,12	0.84	0	5,12,14	1.55	1 (20%)
1	KCX	C	703	1,3	9,11,12	0.81	0	5,12,14	1.58	1 (20%)
1	KCX	B	703	1,3	9,11,12	0.81	0	5,12,14	1.61	1 (20%)

In the following table, the Chirals column lists the number of chiral outliers, the number of chiral centers analysed, the number of these observed in the model and the number defined in the Chemical Component Dictionary. Similar counts are reported in the Torsion and Rings columns. '-' means no outliers of that kind were identified.

Mol	Type	Chain	Res	Link	Chirals	Torsions	Rings
1	KCX	A	703	1,3	-	0/9/10/12	-
1	KCX	D	703	1,3	-	1/9/10/12	-
1	KCX	C	703	1,3	-	0/9/10/12	-
1	KCX	B	703	1,3	-	0/9/10/12	-

There are no bond length outliers.

All (4) bond angle outliers are listed below:

Mol	Chain	Res	Type	Atoms	Z	Observed(°)	Ideal(°)
1	A	703	KCX	OQ1-CX-NZ	-3.33	119.79	124.96
1	B	703	KCX	OQ1-CX-NZ	-3.30	119.84	124.96
1	C	703	KCX	OQ1-CX-NZ	-3.17	120.04	124.96
1	D	703	KCX	OQ1-CX-NZ	-3.17	120.04	124.96

There are no chirality outliers.

All (1) torsion outliers are listed below:

Mol	Chain	Res	Type	Atoms
1	D	703	KCX	O-C-CA-CB

There are no ring outliers.

No monomer is involved in short contacts.

5.5 Carbohydrates [i](#)

There are no monosaccharides in this entry.

5.6 Ligand geometry

Of 26 ligands modelled in this entry, 12 are monoatomic - leaving 14 for Mogul analysis.

In the following table, the Counts columns list the number of bonds (or angles) for which Mogul statistics could be retrieved, the number of bonds (or angles) that are observed in the model and the number of bonds (or angles) that are defined in the Chemical Component Dictionary. The Link column lists molecule types, if any, to which the group is linked. The Z score for a bond length (or angle) is the number of standard deviations the observed value is removed from the expected value. A bond length (or angle) with $|Z| > 2$ is considered an outlier worth inspection. RMSZ is the root-mean-square of all Z scores of the bond lengths (or angles).

Mol	Type	Chain	Res	Link	Bond lengths			Bond angles		
					Counts	RMSZ	# Z > 2	Counts	RMSZ	# Z > 2
7	2BA	C	1201	-	44,50,50	2.42	14 (31%)	50,78,78	1.85	8 (16%)
5	ACO	A	1205	-	45,53,53	2.15	12 (26%)	56,79,79	1.61	10 (17%)
4	ADP	C	1204	2	24,29,29	0.96	1 (4%)	29,45,45	1.42	4 (13%)
4	ADP	A	1203	2	24,29,29	0.94	1 (4%)	29,45,45	1.39	4 (13%)
4	ADP	D	1203	2	24,29,29	0.95	1 (4%)	29,45,45	1.39	4 (13%)
5	ACO	C	1206	-	45,53,53	2.16	12 (26%)	56,79,79	1.61	9 (16%)
5	ACO	B	1205	-	45,53,53	2.15	12 (26%)	56,79,79	1.62	9 (16%)
5	ACO	D	1205	-	45,53,53	2.16	12 (26%)	56,79,79	1.64	8 (14%)
6	PYR	A	1206	-	5,5,5	2.89	3 (60%)	3,6,6	1.55	1 (33%)
7	2BA	A	1207	-	44,50,50	2.42	14 (31%)	50,78,78	1.86	8 (16%)
4	ADP	B	1203	2	24,29,29	0.95	1 (4%)	29,45,45	1.31	4 (13%)
6	PYR	C	1207	-	5,5,5	2.91	3 (60%)	3,6,6	1.52	1 (33%)
6	PYR	D	1206	-	5,5,5	2.89	3 (60%)	3,6,6	1.56	1 (33%)
6	PYR	B	1206	-	5,5,5	2.90	3 (60%)	3,6,6	1.55	1 (33%)

In the following table, the Chirals column lists the number of chiral outliers, the number of chiral centers analysed, the number of these observed in the model and the number defined in the Chemical Component Dictionary. Similar counts are reported in the Torsion and Rings columns. '-' means no outliers of that kind were identified.

Mol	Type	Chain	Res	Link	Chirals	Torsions	Rings
7	2BA	C	1201	-	-	8/22/62/62	0/6/7/7
5	ACO	A	1205	-	-	18/47/67/67	0/3/3/3
4	ADP	C	1204	2	-	5/12/32/32	0/3/3/3
4	ADP	A	1203	2	-	5/12/32/32	0/3/3/3
4	ADP	D	1203	2	-	4/12/32/32	0/3/3/3
5	ACO	C	1206	-	-	19/47/67/67	0/3/3/3

Continued on next page...

Continued from previous page...

Mol	Type	Chain	Res	Link	Chirals	Torsions	Rings
5	ACO	B	1205	-	-	17/47/67/67	0/3/3/3
5	ACO	D	1205	-	-	25/47/67/67	0/3/3/3
6	PYR	A	1206	-	-	0/4/4/4	-
7	2BA	A	1207	-	-	8/22/62/62	0/6/7/7
4	ADP	B	1203	2	-	2/12/32/32	0/3/3/3
6	PYR	C	1207	-	-	0/4/4/4	-
6	PYR	D	1206	-	-	1/4/4/4	-
6	PYR	B	1206	-	-	0/4/4/4	-

All (92) bond length outliers are listed below:

Mol	Chain	Res	Type	Atoms	Z	Observed(Å)	Ideal(Å)
5	C	1206	ACO	O4B-C1B	6.16	1.49	1.41
5	A	1205	ACO	O4B-C1B	6.10	1.49	1.41
5	B	1205	ACO	O4B-C1B	6.03	1.49	1.41
5	D	1205	ACO	O4B-C1B	6.03	1.49	1.41
5	C	1206	ACO	C9P-N8P	5.57	1.45	1.33
5	A	1205	ACO	C9P-N8P	5.56	1.45	1.33
5	D	1205	ACO	C9P-N8P	5.51	1.45	1.33
5	B	1205	ACO	C9P-N8P	5.48	1.45	1.33
5	A	1205	ACO	C5P-N4P	5.39	1.45	1.33
7	A	1207	2BA	C41-N31	-5.37	1.28	1.35
5	C	1206	ACO	C5P-N4P	5.35	1.45	1.33
5	B	1205	ACO	C5P-N4P	5.34	1.45	1.33
7	C	1201	2BA	C4-N3	-5.34	1.28	1.35
7	A	1207	2BA	C4-N3	-5.33	1.28	1.35
5	D	1205	ACO	C5P-N4P	5.32	1.45	1.33
7	C	1201	2BA	C41-N31	-5.31	1.28	1.35
7	C	1201	2BA	C81-N71	4.53	1.42	1.34
7	A	1207	2BA	C5-N7	4.50	1.56	1.39
7	C	1201	2BA	C5-N7	4.49	1.56	1.39
7	A	1207	2BA	C81-N71	4.49	1.42	1.34
7	C	1201	2BA	C51-N71	4.47	1.55	1.39
7	A	1207	2BA	C51-N71	4.45	1.55	1.39
7	A	1207	2BA	O4'-C1'	4.39	1.47	1.41
7	C	1201	2BA	O4'-C1'	4.38	1.47	1.41
7	A	1207	2BA	O4'1-C1'1	4.35	1.47	1.41
7	C	1201	2BA	C8-N7	4.34	1.42	1.34
7	A	1207	2BA	C8-N7	4.32	1.42	1.34
7	C	1201	2BA	O4'1-C1'1	4.30	1.47	1.41
6	C	1207	PYR	C2-C1	-4.19	1.39	1.54

Continued on next page...

Continued from previous page...

Mol	Chain	Res	Type	Atoms	Z	Observed(Å)	Ideal(Å)
6	B	1206	PYR	C2-C1	-4.18	1.39	1.54
6	A	1206	PYR	C2-C1	-4.17	1.39	1.54
6	D	1206	PYR	C2-C1	-4.15	1.39	1.54
6	C	1207	PYR	O3-C2	3.71	1.31	1.23
6	A	1206	PYR	O3-C2	3.69	1.31	1.23
6	B	1206	PYR	O3-C2	3.67	1.31	1.23
6	D	1206	PYR	O3-C2	3.67	1.31	1.23
5	D	1205	ACO	C5A-N7A	3.63	1.52	1.39
5	B	1205	ACO	C5A-N7A	3.59	1.52	1.39
5	C	1206	ACO	C5A-N7A	3.57	1.52	1.39
5	A	1205	ACO	C5A-N7A	3.55	1.52	1.39
6	D	1206	PYR	O1-C1	3.31	1.31	1.22
5	A	1205	ACO	P3B-O3B	3.31	1.65	1.59
6	B	1206	PYR	O1-C1	3.30	1.31	1.22
6	C	1207	PYR	O1-C1	3.30	1.31	1.22
6	A	1206	PYR	O1-C1	3.29	1.31	1.22
5	B	1205	ACO	C2B-C1B	-3.26	1.48	1.53
5	D	1205	ACO	C2B-C1B	-3.25	1.48	1.53
7	C	1201	2BA	C61-N61	3.24	1.45	1.34
7	A	1207	2BA	C61-N61	3.21	1.45	1.34
7	C	1201	2BA	C6-N6	3.15	1.45	1.34
7	A	1207	2BA	C6-N6	3.14	1.45	1.34
5	C	1206	ACO	P3B-O3B	3.13	1.65	1.59
5	C	1206	ACO	C6A-N6A	3.12	1.45	1.34
5	D	1205	ACO	C6A-N6A	3.11	1.45	1.34
5	B	1205	ACO	C6A-N6A	3.11	1.45	1.34
5	A	1205	ACO	C6A-N6A	3.11	1.45	1.34
5	B	1205	ACO	P3B-O3B	3.10	1.65	1.59
5	C	1206	ACO	C2B-C1B	-3.08	1.49	1.53
5	D	1205	ACO	P3B-O3B	3.08	1.65	1.59
5	D	1205	ACO	C2B-C3B	-3.00	1.46	1.52
5	C	1206	ACO	C2B-C3B	-2.98	1.46	1.52
5	B	1205	ACO	C2B-C3B	-2.94	1.46	1.52
5	A	1205	ACO	C2B-C1B	-2.87	1.49	1.53
5	A	1205	ACO	C2B-C3B	-2.78	1.46	1.52
7	C	1201	2BA	C2'-C1'	-2.56	1.49	1.53
7	A	1207	2BA	C2'-C1'	-2.53	1.49	1.53
7	A	1207	2BA	C2'1-C1'1	-2.50	1.50	1.53
4	C	1204	ADP	C5-C4	2.49	1.47	1.40
4	D	1203	ADP	C5-C4	2.47	1.47	1.40
7	C	1201	2BA	C2'-C3'	-2.47	1.47	1.52
7	A	1207	2BA	C2'-C3'	-2.46	1.47	1.52

Continued on next page...

Continued from previous page...

Mol	Chain	Res	Type	Atoms	Z	Observed(Å)	Ideal(Å)
4	B	1203	ADP	C5-C4	2.46	1.47	1.40
4	A	1203	ADP	C5-C4	2.45	1.47	1.40
7	C	1201	2BA	C2'1-C1'1	-2.45	1.50	1.53
5	C	1206	ACO	O9P-C9P	-2.35	1.18	1.23
5	D	1205	ACO	O9P-C9P	-2.28	1.18	1.23
5	A	1205	ACO	O9P-C9P	-2.27	1.18	1.23
5	B	1205	ACO	O9P-C9P	-2.22	1.19	1.23
5	D	1205	ACO	P3B-O8A	-2.21	1.46	1.54
5	B	1205	ACO	P3B-O8A	-2.21	1.46	1.54
5	B	1205	ACO	P3B-O9A	-2.21	1.46	1.54
5	A	1205	ACO	P3B-O8A	-2.21	1.46	1.54
5	A	1205	ACO	P3B-O9A	-2.21	1.46	1.54
5	C	1206	ACO	P3B-O8A	-2.20	1.46	1.54
5	D	1205	ACO	P3B-O9A	-2.20	1.46	1.54
5	C	1206	ACO	P3B-O9A	-2.19	1.46	1.54
5	B	1205	ACO	O5P-C5P	-2.17	1.18	1.23
5	A	1205	ACO	O5P-C5P	-2.16	1.18	1.23
5	C	1206	ACO	O5P-C5P	-2.15	1.18	1.23
5	D	1205	ACO	O5P-C5P	-2.15	1.18	1.23
7	C	1201	2BA	C2'1-C3'1	-2.12	1.48	1.52
7	A	1207	2BA	C2'1-C3'1	-2.09	1.48	1.52

All (72) bond angle outliers are listed below:

Mol	Chain	Res	Type	Atoms	Z	Observed(°)	Ideal(°)
7	C	1201	2BA	C4-C5-N7	-6.74	102.38	109.40
7	A	1207	2BA	C4-C5-N7	-6.73	102.38	109.40
7	C	1201	2BA	C41-C51-N71	-6.07	103.07	109.40
7	A	1207	2BA	C41-C51-N71	-6.04	103.10	109.40
5	B	1205	ACO	C4A-C5A-N7A	-5.21	103.97	109.40
5	D	1205	ACO	C4A-C5A-N7A	-5.18	104.00	109.40
5	C	1206	ACO	C4A-C5A-N7A	-5.11	104.08	109.40
5	A	1205	ACO	C4A-C5A-N7A	-5.07	104.11	109.40
5	D	1205	ACO	C1B-N9A-C4A	-4.77	118.27	126.64
7	A	1207	2BA	N3-C2-N1	-4.76	121.24	128.68
5	C	1206	ACO	C1B-N9A-C4A	-4.75	118.30	126.64
7	C	1201	2BA	N3-C2-N1	-4.74	121.27	128.68
5	B	1205	ACO	C1B-N9A-C4A	-4.65	118.47	126.64
5	A	1205	ACO	C1B-N9A-C4A	-4.16	119.33	126.64
7	C	1201	2BA	N31-C21-N11	-4.12	122.24	128.68
7	A	1207	2BA	N31-C21-N11	-4.10	122.28	128.68
7	A	1207	2BA	C1'-N9-C4	-3.93	119.74	126.64

Continued on next page...

Continued from previous page...

Mol	Chain	Res	Type	Atoms	Z	Observed(°)	Ideal(°)
7	C	1201	2BA	C1'-N9-C4	-3.90	119.79	126.64
5	D	1205	ACO	N3A-C2A-N1A	-3.82	122.70	128.68
5	C	1206	ACO	N3A-C2A-N1A	-3.80	122.74	128.68
5	B	1205	ACO	N3A-C2A-N1A	-3.79	122.75	128.68
5	A	1205	ACO	N3A-C2A-N1A	-3.71	122.87	128.68
4	C	1204	ADP	C3'-C2'-C1'	3.49	106.23	100.98
4	A	1203	ADP	C3'-C2'-C1'	3.44	106.16	100.98
5	A	1205	ACO	C3B-C2B-C1B	3.43	107.48	99.89
7	A	1207	2BA	C1'1-N91-C41	-3.33	120.79	126.64
4	D	1203	ADP	C3'-C2'-C1'	3.23	105.84	100.98
4	C	1204	ADP	N3-C2-N1	-3.18	123.70	128.68
7	C	1201	2BA	C1'1-N91-C41	-3.18	121.06	126.64
4	C	1204	ADP	PA-O3A-PB	-3.17	121.94	132.83
4	D	1203	ADP	PA-O3A-PB	-3.17	121.96	132.83
4	A	1203	ADP	N3-C2-N1	-3.17	123.73	128.68
4	B	1203	ADP	N3-C2-N1	-3.16	123.75	128.68
4	D	1203	ADP	N3-C2-N1	-3.15	123.76	128.68
4	B	1203	ADP	C3'-C2'-C1'	3.14	105.71	100.98
5	A	1205	ACO	P2A-O3A-P1A	-2.72	123.49	132.83
5	C	1206	ACO	P2A-O3A-P1A	-2.70	123.55	132.83
4	D	1203	ADP	C4-C5-N7	-2.67	106.62	109.40
5	B	1205	ACO	P2A-O3A-P1A	-2.66	123.71	132.83
4	A	1203	ADP	C4-C5-N7	-2.64	106.65	109.40
5	C	1206	ACO	C3B-C2B-C1B	2.62	105.70	99.89
7	C	1201	2BA	C3'1-C2'1-C1'1	2.61	105.68	99.89
4	B	1203	ADP	C4-C5-N7	-2.60	106.69	109.40
4	C	1204	ADP	C4-C5-N7	-2.57	106.72	109.40
7	A	1207	2BA	C3'1-C2'1-C1'1	2.54	105.52	99.89
5	D	1205	ACO	P2A-O3A-P1A	-2.47	124.35	132.83
5	D	1205	ACO	C6P-C5P-N4P	2.46	120.56	116.42
5	D	1205	ACO	O2A-P1A-O1A	-2.39	100.41	112.24
5	B	1205	ACO	C3B-C2B-C1B	2.37	105.14	99.89
4	A	1203	ADP	PA-O3A-PB	-2.35	124.75	132.83
4	B	1203	ADP	PA-O3A-PB	-2.32	124.87	132.83
5	D	1205	ACO	C3B-C2B-C1B	2.31	105.02	99.89
5	A	1205	ACO	O2A-P1A-O1A	-2.26	101.08	112.24
5	B	1205	ACO	O2A-P1A-O1A	-2.24	101.16	112.24
5	B	1205	ACO	O5A-P2A-O4A	-2.23	101.22	112.24
5	D	1205	ACO	O5A-P2A-O4A	-2.22	101.24	112.24
5	C	1206	ACO	CAP-C9P-N8P	2.21	120.98	116.58
5	A	1205	ACO	O5A-P2A-O4A	-2.21	101.33	112.24
6	D	1206	PYR	O2-C1-C2	2.20	119.99	113.97

Continued on next page...

Continued from previous page...

Mol	Chain	Res	Type	Atoms	Z	Observed(°)	Ideal(°)
6	B	1206	PYR	O2-C1-C2	2.18	119.94	113.97
5	C	1206	ACO	O5A-P2A-O4A	-2.18	101.47	112.24
6	A	1206	PYR	O2-C1-C2	2.17	119.92	113.97
7	A	1207	2BA	C3'-C2'-C1'	2.16	104.67	99.89
6	C	1207	PYR	O2-C1-C2	2.15	119.86	113.97
5	A	1205	ACO	C2B-C3B-C4B	2.15	107.03	103.22
7	C	1201	2BA	C3'-C2'-C1'	2.14	104.63	99.89
5	C	1206	ACO	O2A-P1A-O1A	-2.13	101.70	112.24
5	C	1206	ACO	C6P-C5P-N4P	2.12	120.00	116.42
5	A	1205	ACO	C6P-C5P-N4P	2.12	119.99	116.42
5	A	1205	ACO	C7P-C6P-C5P	-2.08	108.89	112.36
5	B	1205	ACO	C6P-C5P-N4P	2.08	119.92	116.42
5	B	1205	ACO	C7P-C6P-C5P	-2.06	108.93	112.36

There are no chirality outliers.

All (112) torsion outliers are listed below:

Mol	Chain	Res	Type	Atoms
4	A	1203	ADP	C5'-O5'-PA-O2A
4	C	1204	ADP	C5'-O5'-PA-O1A
4	C	1204	ADP	C5'-O5'-PA-O3A
4	D	1203	ADP	C5'-O5'-PA-O1A
5	A	1205	ACO	C4B-C3B-O3B-P3B
5	A	1205	ACO	CCP-O6A-P2A-O3A
5	A	1205	ACO	CCP-O6A-P2A-O5A
5	A	1205	ACO	CDP-CBP-CCP-O6A
5	A	1205	ACO	CAP-CBP-CCP-O6A
5	A	1205	ACO	OAP-CAP-CBP-CCP
5	A	1205	ACO	C9P-CAP-CBP-CCP
5	A	1205	ACO	OAP-CAP-CBP-CDP
5	A	1205	ACO	C9P-CAP-CBP-CDP
5	A	1205	ACO	OAP-CAP-CBP-CEP
5	A	1205	ACO	C9P-CAP-CBP-CEP
5	A	1205	ACO	C3P-C2P-S1P-C
5	B	1205	ACO	CCP-O6A-P2A-O4A
5	B	1205	ACO	CCP-O6A-P2A-O5A
5	B	1205	ACO	N8P-C9P-CAP-OAP
5	B	1205	ACO	C3P-C2P-S1P-C
5	C	1206	ACO	C3B-O3B-P3B-O7A
5	C	1206	ACO	C5B-O5B-P1A-O2A
5	C	1206	ACO	C5B-O5B-P1A-O3A
5	C	1206	ACO	C9P-CAP-CBP-CCP

Continued on next page...

Continued from previous page...

Mol	Chain	Res	Type	Atoms
5	C	1206	ACO	C9P-CAP-CBP-CDP
5	C	1206	ACO	C9P-CAP-CBP-CEP
5	C	1206	ACO	O9P-C9P-CAP-CBP
5	C	1206	ACO	N8P-C9P-CAP-CBP
5	C	1206	ACO	N8P-C9P-CAP-OAP
5	D	1205	ACO	CCP-O6A-P2A-O4A
5	D	1205	ACO	CCP-O6A-P2A-O5A
5	D	1205	ACO	CAP-CBP-CCP-O6A
5	D	1205	ACO	C9P-CAP-CBP-CCP
5	D	1205	ACO	C9P-CAP-CBP-CDP
5	D	1205	ACO	N8P-C9P-CAP-OAP
5	D	1205	ACO	C3P-C2P-S1P-C
5	D	1205	ACO	O-C-S1P-C2P
5	D	1205	ACO	CH3-C-S1P-C2P
7	A	1207	2BA	C5'1-O5'1-P1-O2P1
7	C	1201	2BA	C5'1-O5'1-P1-O2P1
5	D	1205	ACO	C6P-C5P-N4P-C3P
4	A	1203	ADP	O4'-C4'-C5'-O5'
5	C	1206	ACO	C3B-C4B-C5B-O5B
5	D	1205	ACO	O5P-C5P-N4P-C3P
5	C	1206	ACO	O4B-C4B-C5B-O5B
7	A	1207	2BA	C5'-O5'-P-O3'1
7	A	1207	2BA	C5'1-O5'1-P1-O3'
7	C	1201	2BA	C5'-O5'-P-O3'1
7	C	1201	2BA	C5'1-O5'1-P1-O3'
5	A	1205	ACO	CEP-CBP-CCP-O6A
5	D	1205	ACO	CDP-CBP-CCP-O6A
5	A	1205	ACO	O-C-S1P-C2P
5	B	1205	ACO	O9P-C9P-CAP-OAP
5	C	1206	ACO	O9P-C9P-CAP-OAP
5	D	1205	ACO	O9P-C9P-CAP-OAP
5	D	1205	ACO	CEP-CBP-CCP-O6A
5	C	1206	ACO	OAP-CAP-CBP-CDP
5	C	1206	ACO	OAP-CAP-CBP-CEP
5	D	1205	ACO	OAP-CAP-CBP-CDP
5	D	1205	ACO	OAP-CAP-CBP-CEP
4	A	1203	ADP	C3'-C4'-C5'-O5'
5	D	1205	ACO	O9P-C9P-CAP-CBP
5	D	1205	ACO	S1P-C2P-C3P-N4P
4	B	1203	ADP	PB-O3A-PA-O5'
5	D	1205	ACO	P1A-O3A-P2A-O6A
5	B	1205	ACO	C9P-CAP-CBP-CDP

Continued on next page...

Continued from previous page...

Mol	Chain	Res	Type	Atoms
4	A	1203	ADP	C5'-O5'-PA-O3A
4	D	1203	ADP	C5'-O5'-PA-O3A
4	C	1204	ADP	PB-O3A-PA-O1A
4	D	1203	ADP	PB-O3A-PA-O1A
5	A	1205	ACO	P1A-O3A-P2A-O4A
7	C	1201	2BA	C3'-O3'-P1-O5'1
4	A	1203	ADP	C5'-O5'-PA-O1A
4	C	1204	ADP	C5'-O5'-PA-O2A
5	A	1205	ACO	CCP-O6A-P2A-O4A
5	B	1205	ACO	C5B-O5B-P1A-O2A
5	C	1206	ACO	C5B-O5B-P1A-O1A
5	C	1206	ACO	CCP-O6A-P2A-O4A
5	D	1205	ACO	C5B-O5B-P1A-O1A
7	A	1207	2BA	C5'-O5'-P-O2P
7	A	1207	2BA	C5'1-O5'1-P1-O1P1
7	C	1201	2BA	C5'-O5'-P-O2P
7	C	1201	2BA	C5'1-O5'1-P1-O1P1
5	B	1205	ACO	C9P-CAP-CBP-CCP
5	C	1206	ACO	OAP-CAP-CBP-CCP
5	D	1205	ACO	OAP-CAP-CBP-CCP
5	B	1205	ACO	CDP-CBP-CCP-O6A
5	B	1205	ACO	OAP-CAP-CBP-CEP
5	A	1205	ACO	CH3-C-S1P-C2P
5	B	1205	ACO	O-C-S1P-C2P
6	D	1206	PYR	O2-C1-C2-O3
7	A	1207	2BA	C3'-O3'-P1-O5'1
5	D	1205	ACO	N8P-C9P-CAP-CBP
5	C	1206	ACO	C3P-C2P-S1P-C
5	B	1205	ACO	CH3-C-S1P-C2P
5	D	1205	ACO	C3B-O3B-P3B-O7A
5	B	1205	ACO	CEP-CBP-CCP-O6A
7	A	1207	2BA	C3'1-O3'1-P-O5'
5	B	1205	ACO	C9P-CAP-CBP-CEP
5	D	1205	ACO	C9P-CAP-CBP-CEP
4	B	1203	ADP	C5'-O5'-PA-O3A
5	B	1205	ACO	C5B-O5B-P1A-O3A
5	B	1205	ACO	CCP-O6A-P2A-O3A
5	C	1206	ACO	CCP-O6A-P2A-O3A
5	D	1205	ACO	CCP-O6A-P2A-O3A
4	C	1204	ADP	PB-O3A-PA-O2A
4	D	1203	ADP	PB-O3A-PA-O2A
5	A	1205	ACO	CBP-CCP-O6A-P2A

Continued on next page...

Continued from previous page...

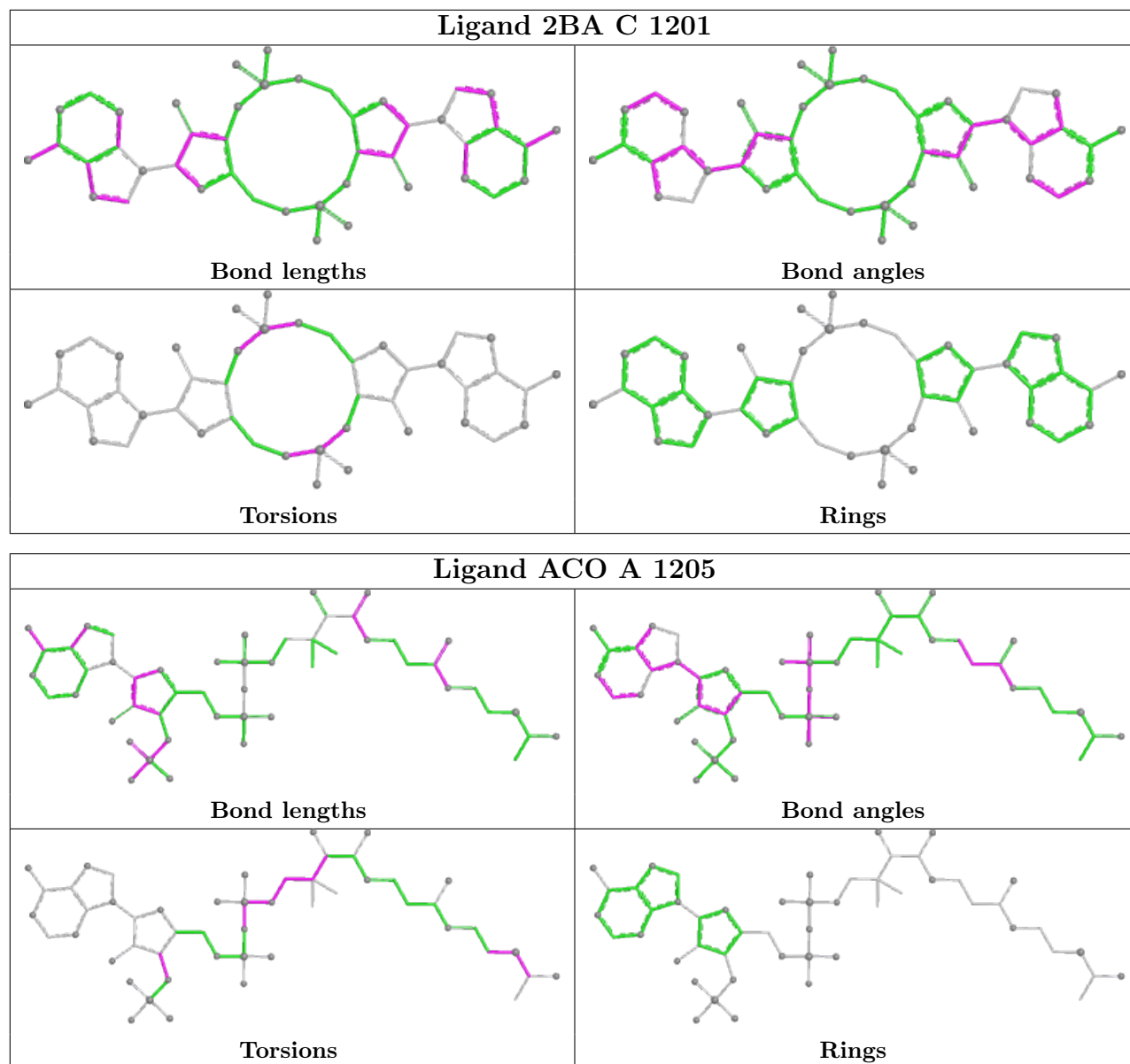
Mol	Chain	Res	Type	Atoms
7	C	1201	2BA	C3'1-O3'1-P-O5'
7	A	1207	2BA	C5'-O5'-P-O1P
7	C	1201	2BA	C5'-O5'-P-O1P
5	B	1205	ACO	O9P-C9P-CAP-CBP

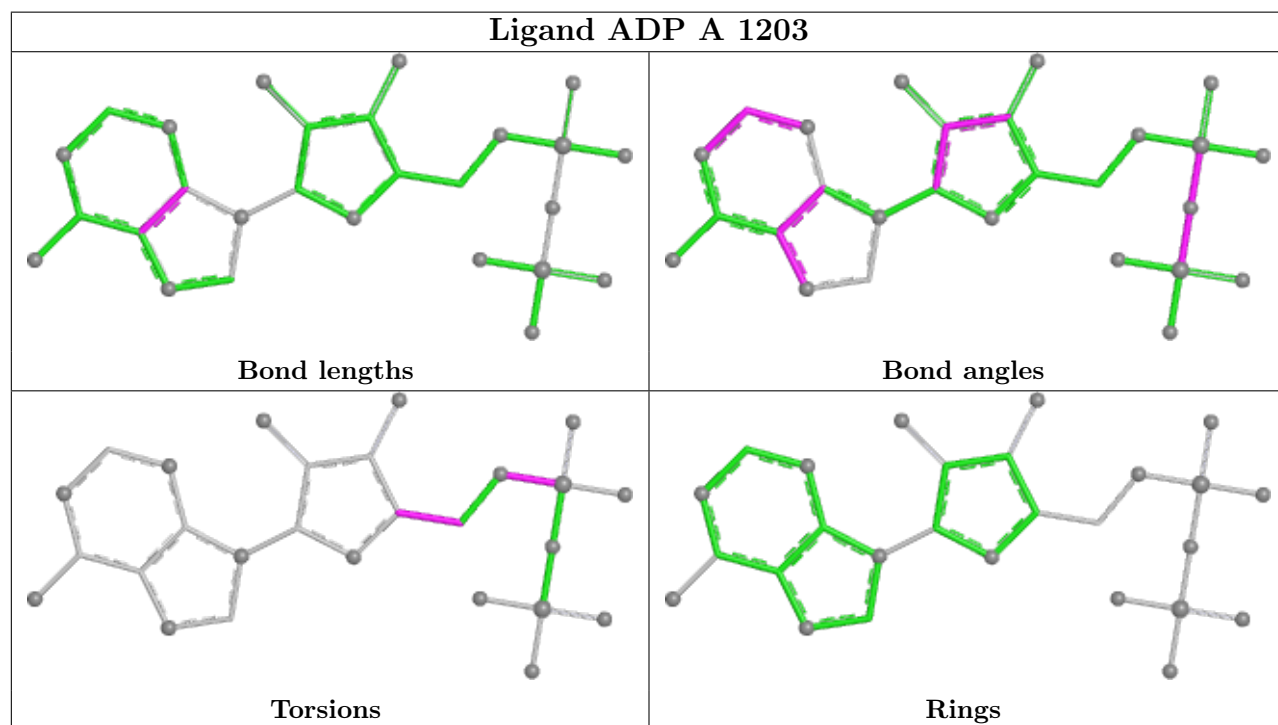
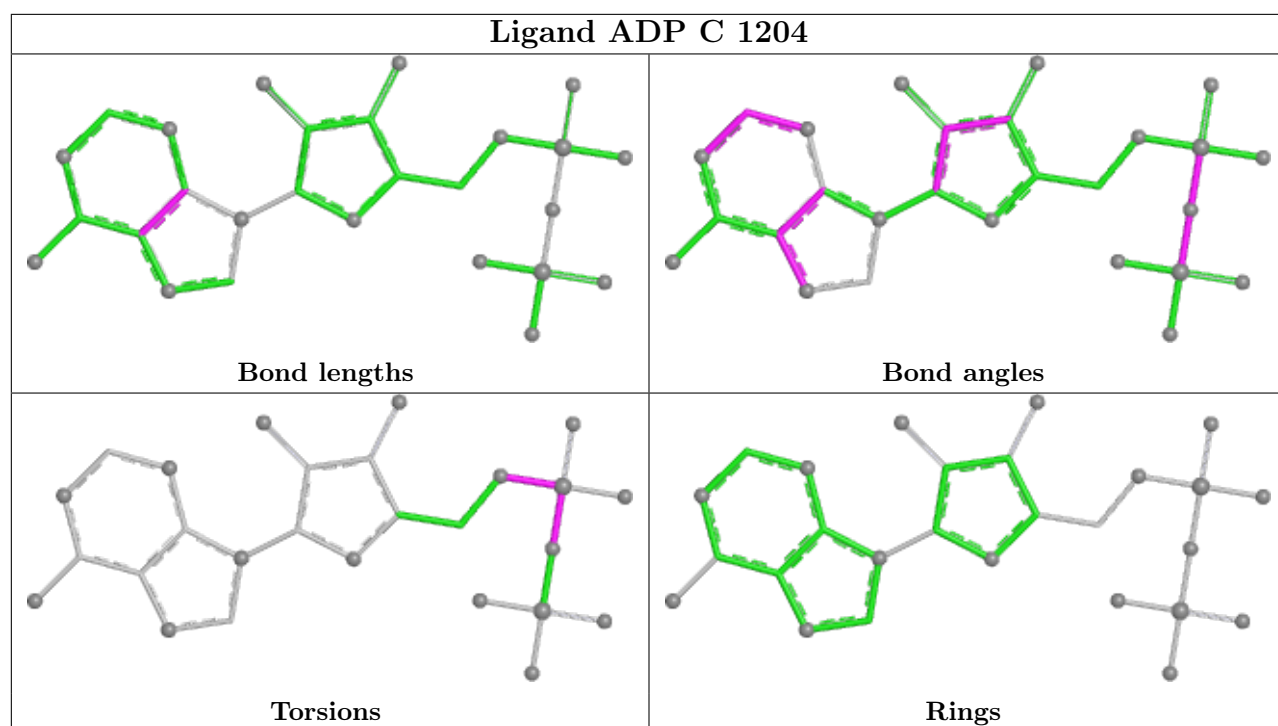
There are no ring outliers.

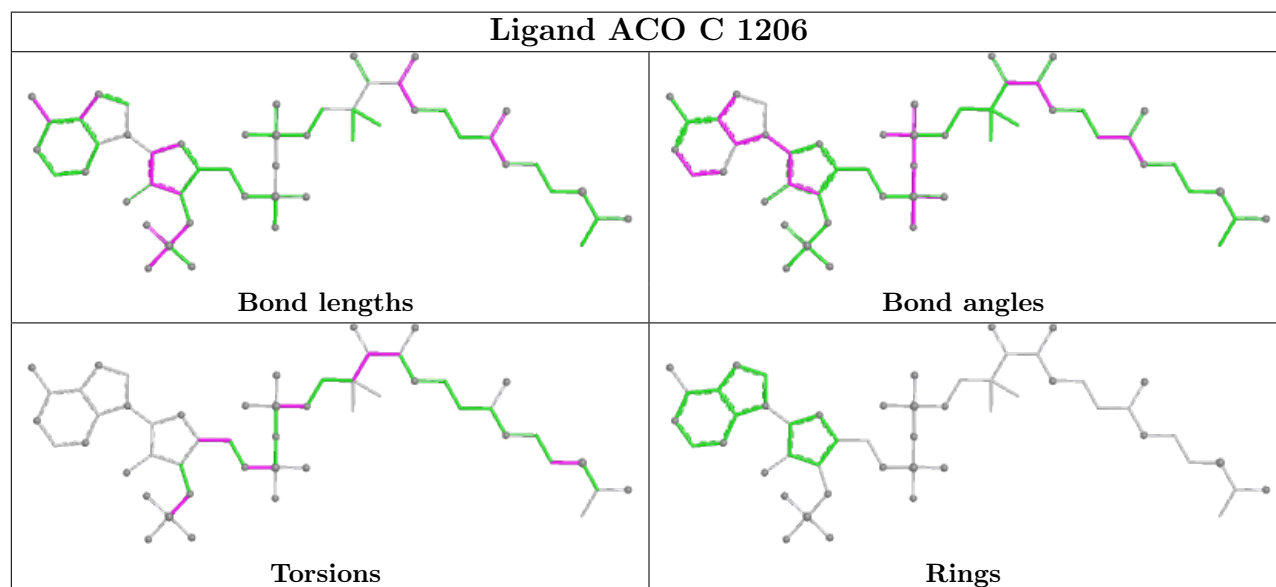
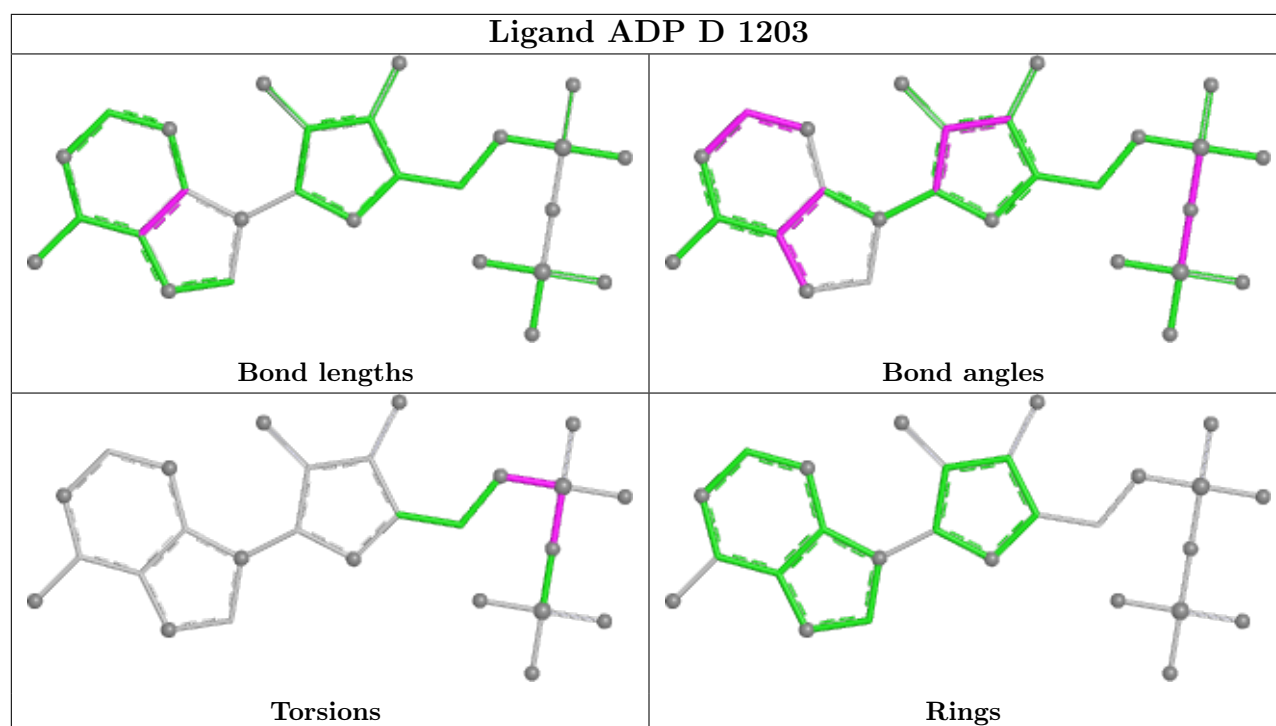
9 monomers are involved in 14 short contacts:

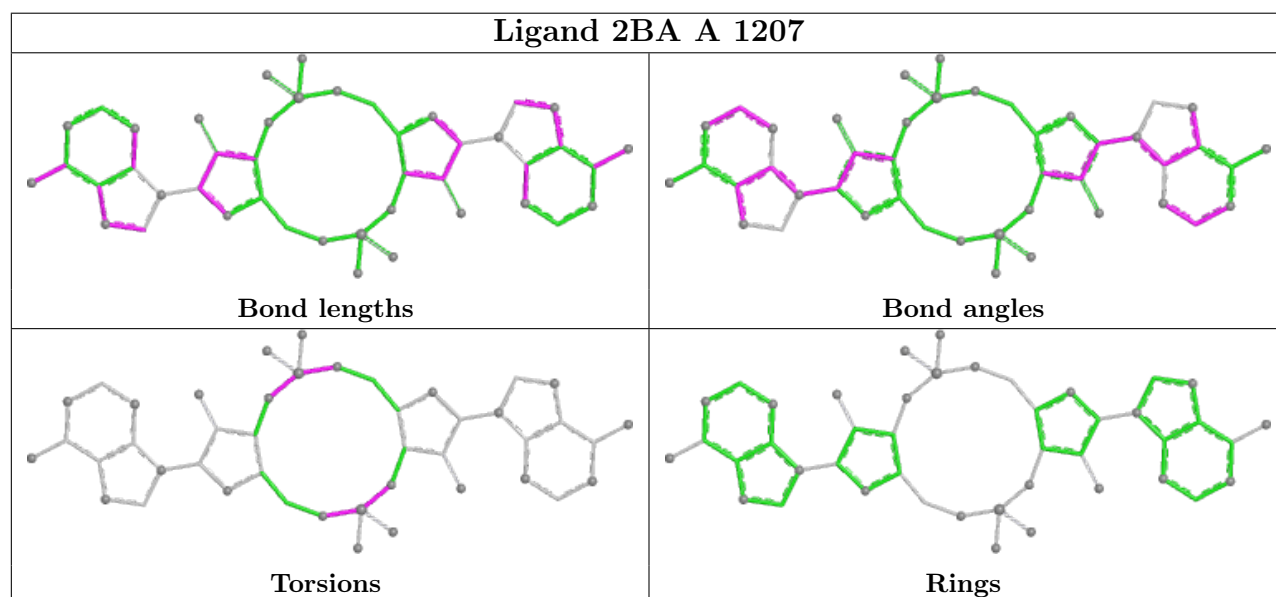
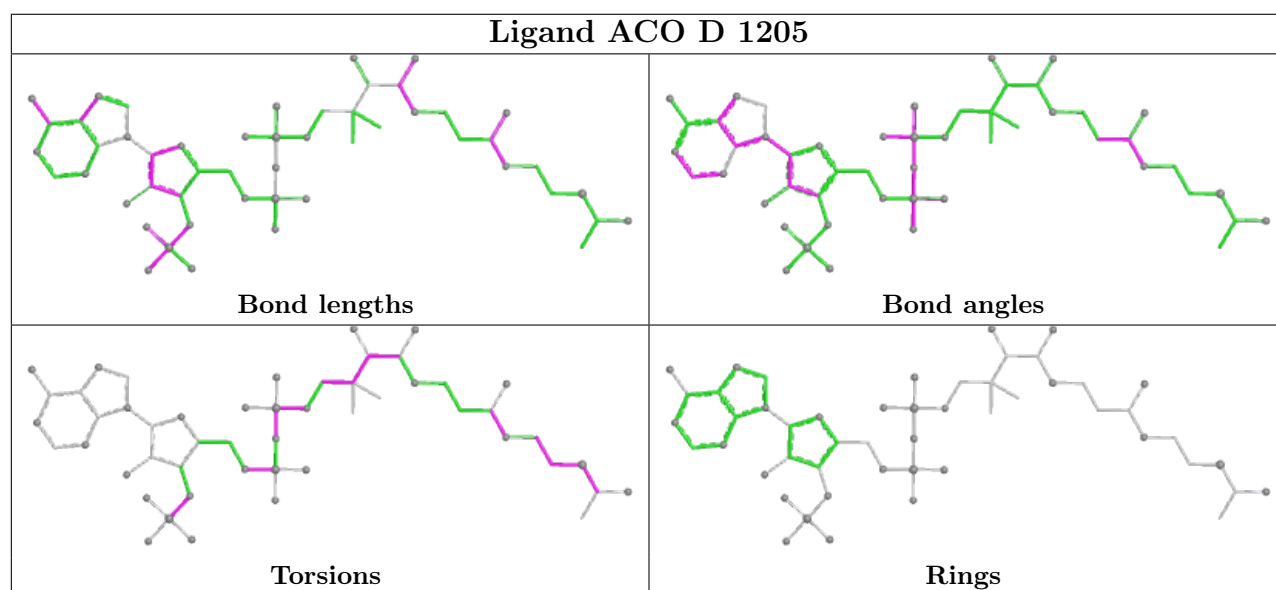
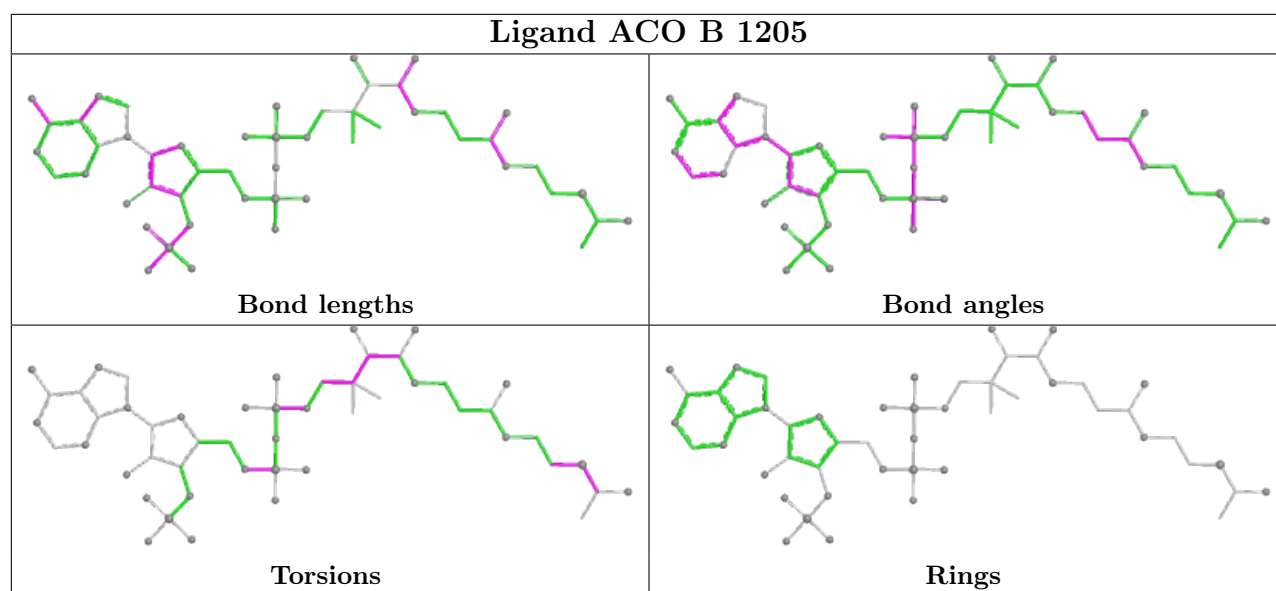
Mol	Chain	Res	Type	Clashes	Symm-Clashes
7	C	1201	2BA	1	0
5	C	1206	ACO	3	0
5	B	1205	ACO	1	0
5	D	1205	ACO	3	0
6	A	1206	PYR	1	0
4	B	1203	ADP	1	0
6	C	1207	PYR	1	0
6	D	1206	PYR	1	0
6	B	1206	PYR	2	0

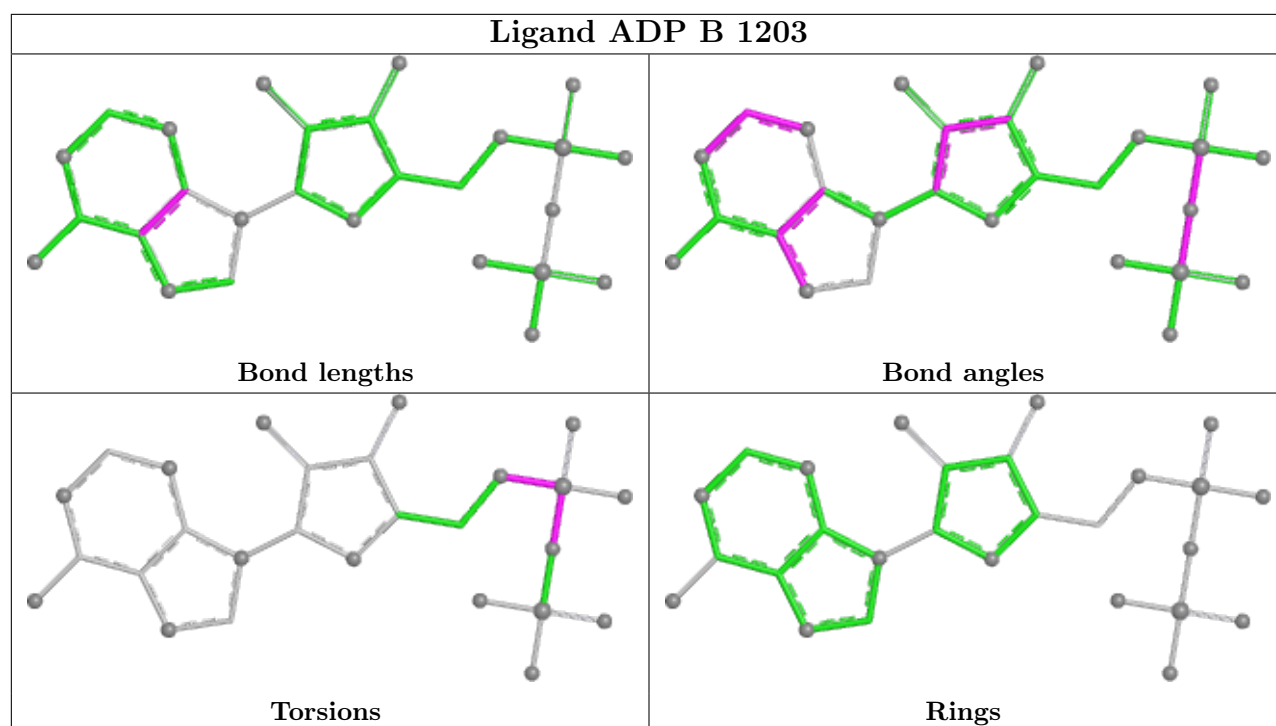
The following is a two-dimensional graphical depiction of Mogul quality analysis of bond lengths, bond angles, torsion angles, and ring geometry for all instances of the Ligand of Interest. In addition, ligands with molecular weight > 250 and outliers as shown on the validation Tables will also be included. For torsion angles, if less than 5% of the Mogul distribution of torsion angles is within 10 degrees of the torsion angle in question, then that torsion angle is considered an outlier. Any bond that is central to one or more torsion angles identified as an outlier by Mogul will be highlighted in the graph. For rings, the root-mean-square deviation (RMSD) between the ring in question and similar rings identified by Mogul is calculated over all ring torsion angles. If the average RMSD is greater than 60 degrees and the minimal RMSD between the ring in question and any Mogul-identified rings is also greater than 60 degrees, then that ring is considered an outlier. The outliers are highlighted in purple. The color gray indicates Mogul did not find sufficient equivalents in the CSD to analyse the geometry.











5.7 Other polymers [i](#)

There are no such residues in this entry.

5.8 Polymer linkage issues [i](#)

There are no chain breaks in this entry.

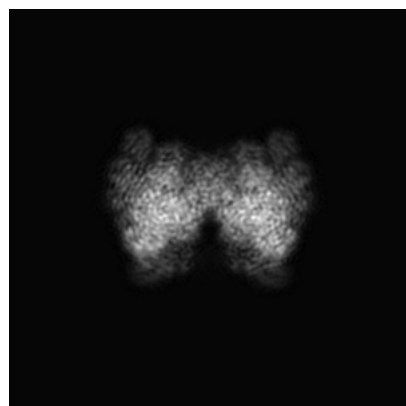
6 Map visualisation [i](#)

This section contains visualisations of the EMDB entry EMD-15037. These allow visual inspection of the internal detail of the map and identification of artifacts.

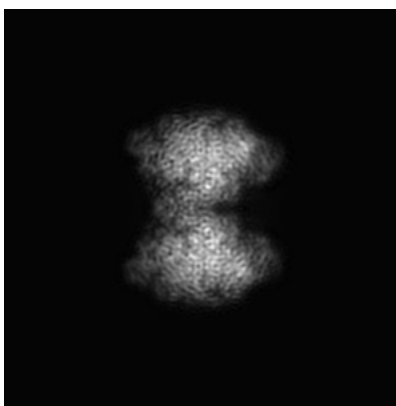
Images derived from a raw map, generated by summing the deposited half-maps, are presented below the corresponding image components of the primary map to allow further visual inspection and comparison with those of the primary map.

6.1 Orthogonal projections [i](#)

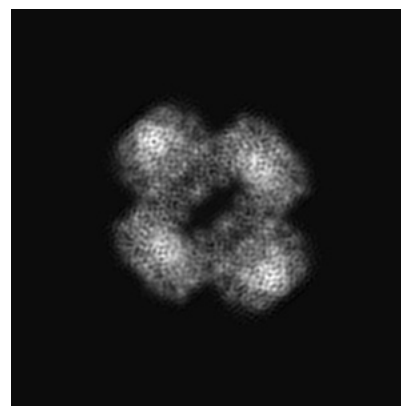
6.1.1 Primary map



X

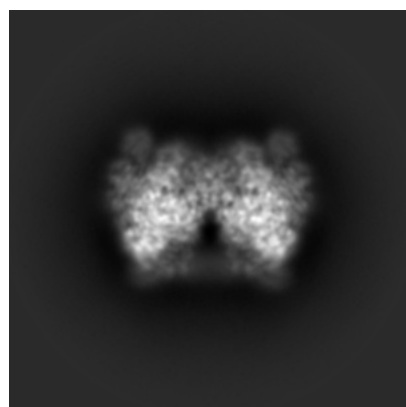


Y

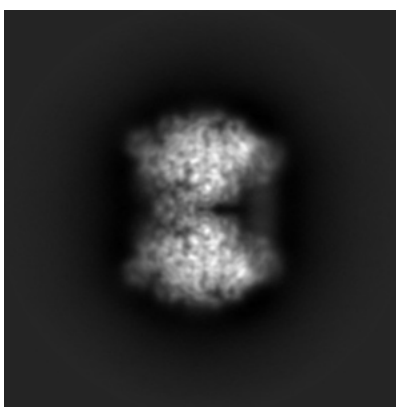


Z

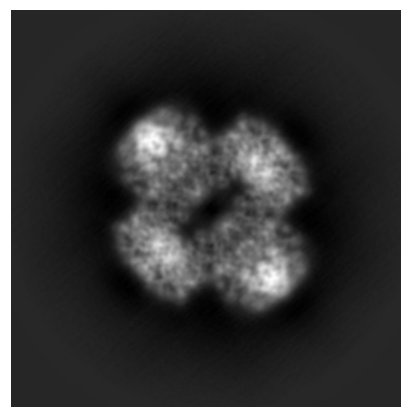
6.1.2 Raw map



X



Y



Z

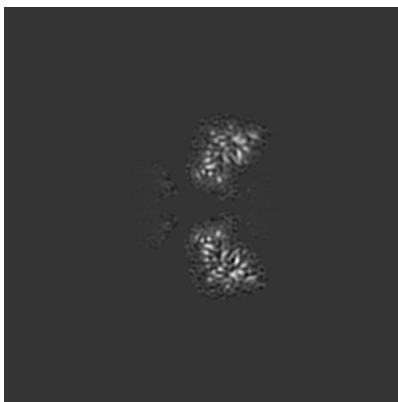
The images above show the map projected in three orthogonal directions.

6.2 Central slices [i](#)

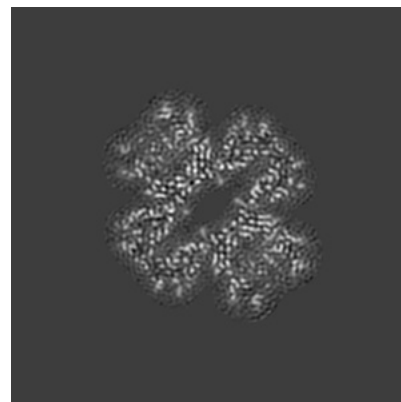
6.2.1 Primary map



X Index: 132

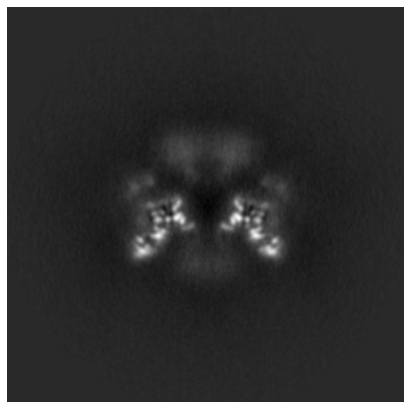


Y Index: 132

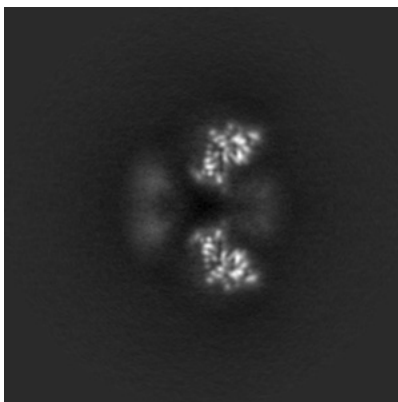


Z Index: 132

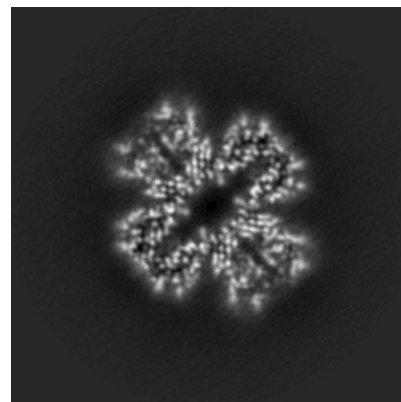
6.2.2 Raw map



X Index: 132



Y Index: 132

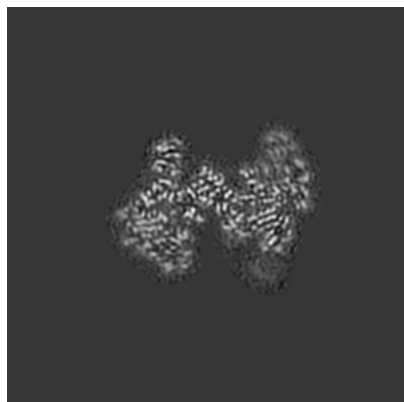


Z Index: 132

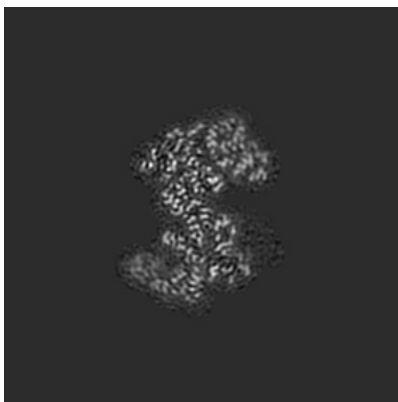
The images above show central slices of the map in three orthogonal directions.

6.3 Largest variance slices [i](#)

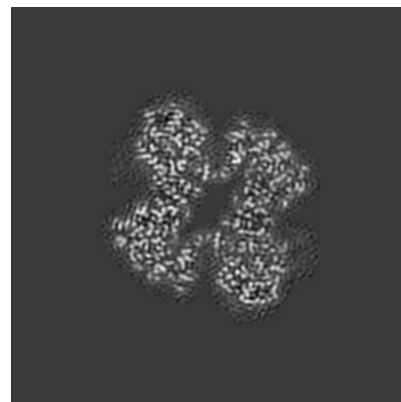
6.3.1 Primary map



X Index: 100

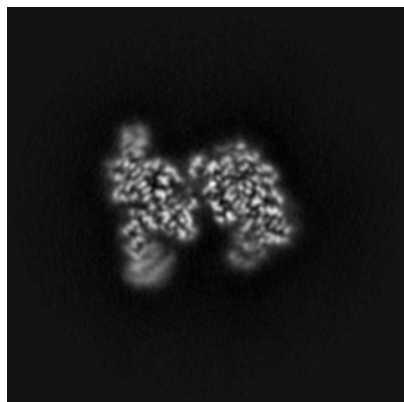


Y Index: 165

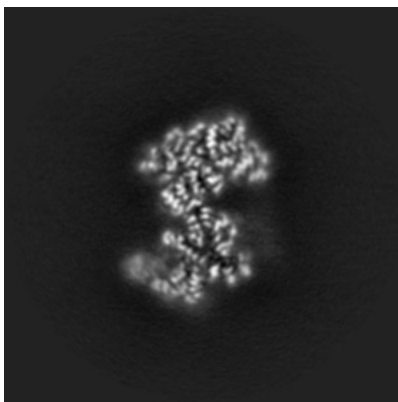


Z Index: 137

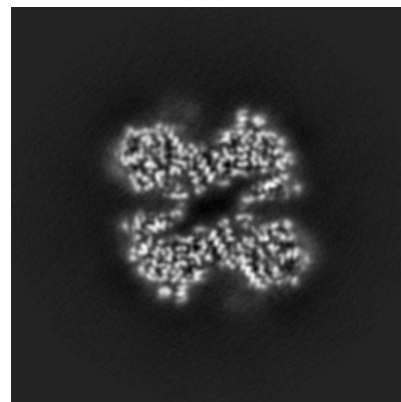
6.3.2 Raw map



X Index: 172



Y Index: 165

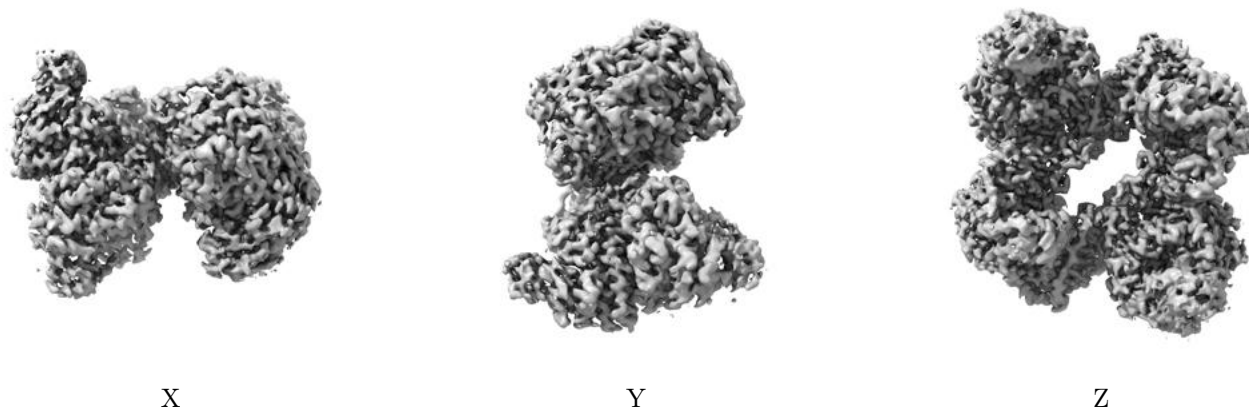


Z Index: 126

The images above show the largest variance slices of the map in three orthogonal directions.

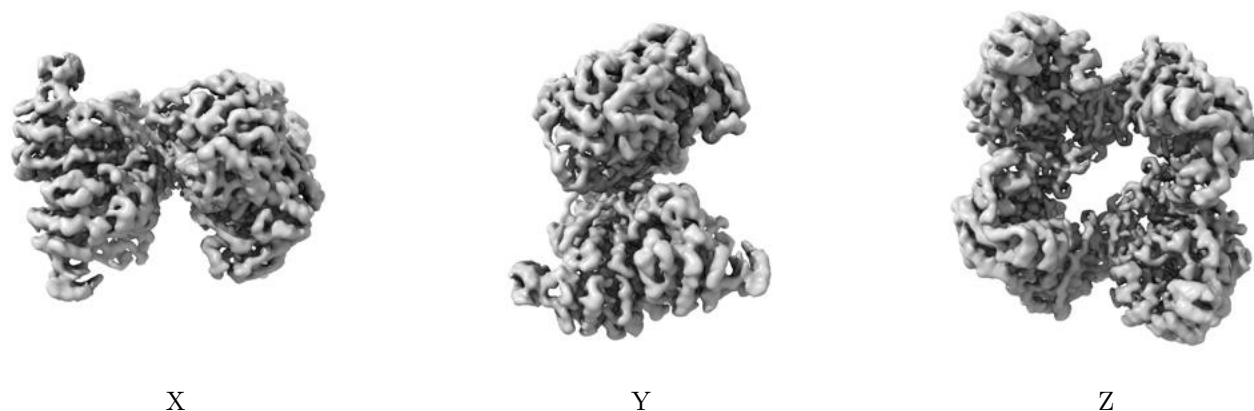
6.4 Orthogonal surface views [i](#)

6.4.1 Primary map



The images above show the 3D surface view of the map at the recommended contour level 0.15. These images, in conjunction with the slice images, may facilitate assessment of whether an appropriate contour level has been provided.

6.4.2 Raw map



These images show the 3D surface of the raw map. The raw map's contour level was selected so that its surface encloses the same volume as the primary map does at its recommended contour level.

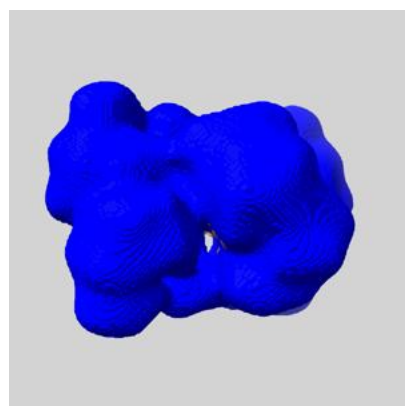
6.5 Mask visualisation [i](#)

This section shows the 3D surface view of the primary map at 50% transparency overlaid with the specified mask at 0% transparency

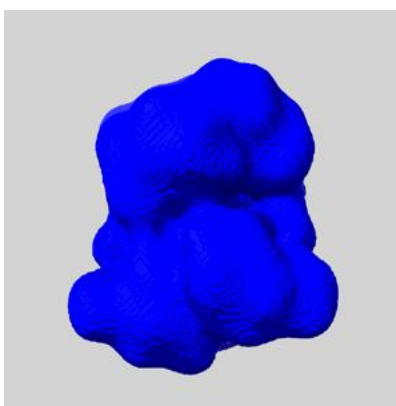
A mask typically either:

- Encompasses the whole structure
- Separates out a domain, a functional unit, a monomer or an area of interest from a larger structure

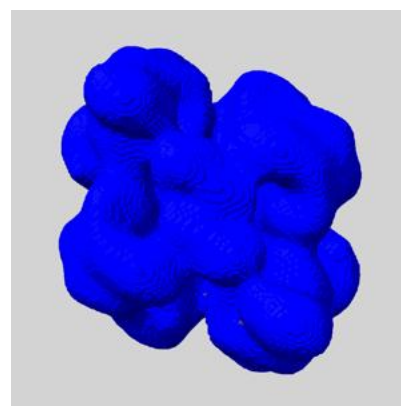
6.5.1 emd_15037_msk_1.map [i](#)



X



Y

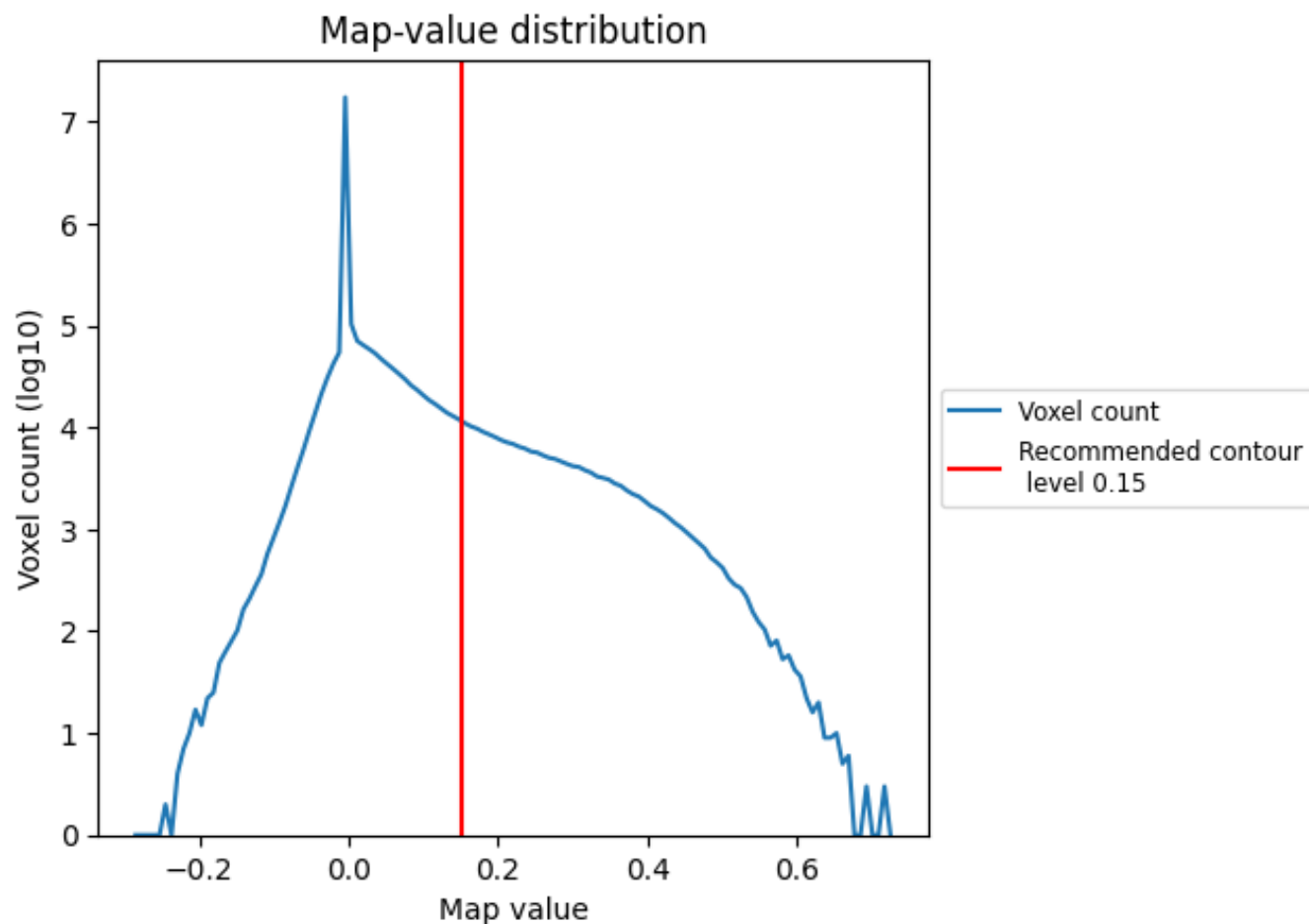


Z

7 Map analysis [i](#)

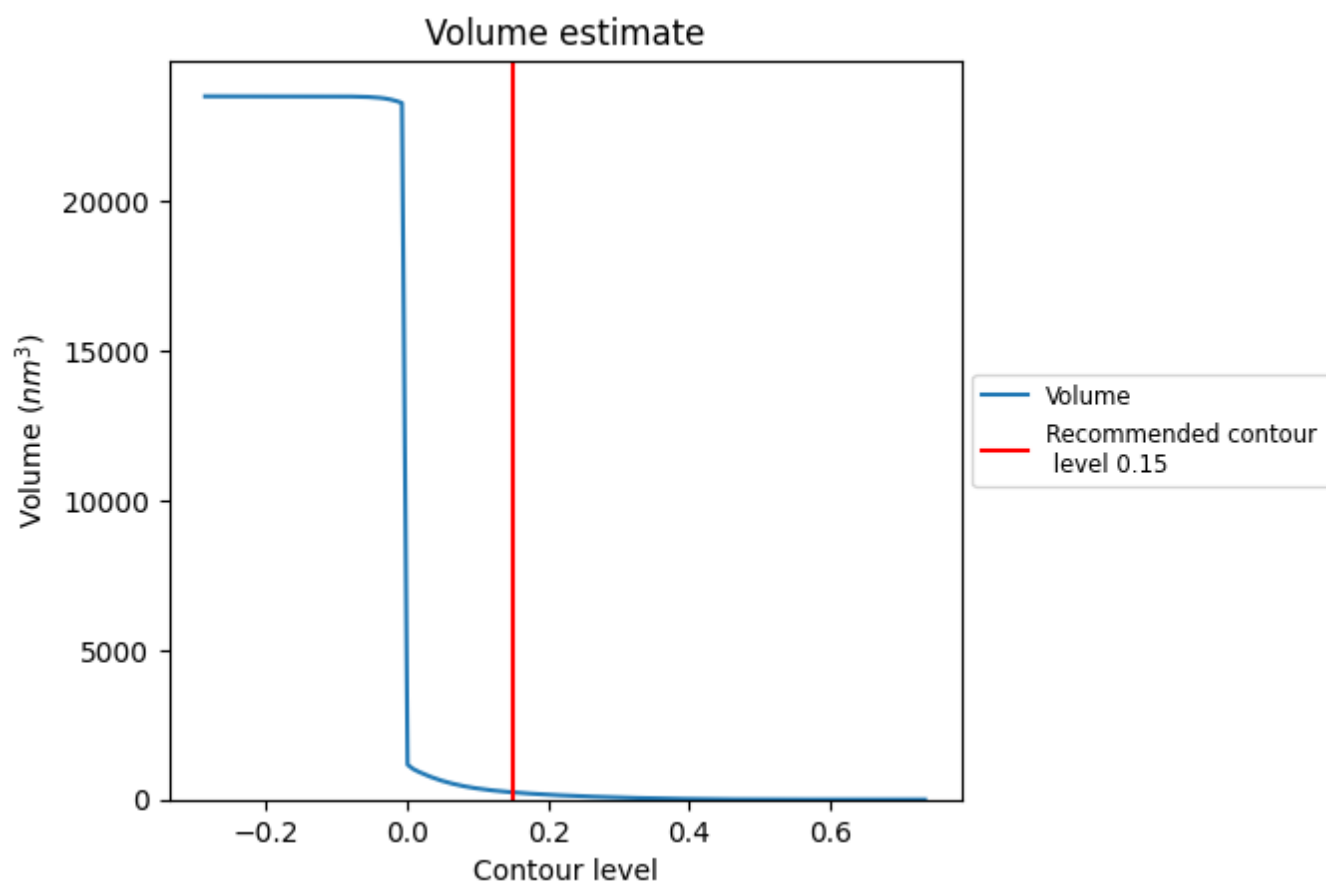
This section contains the results of statistical analysis of the map.

7.1 Map-value distribution [i](#)



The map-value distribution is plotted in 128 intervals along the x-axis. The y-axis is logarithmic. A spike in this graph at zero usually indicates that the volume has been masked.

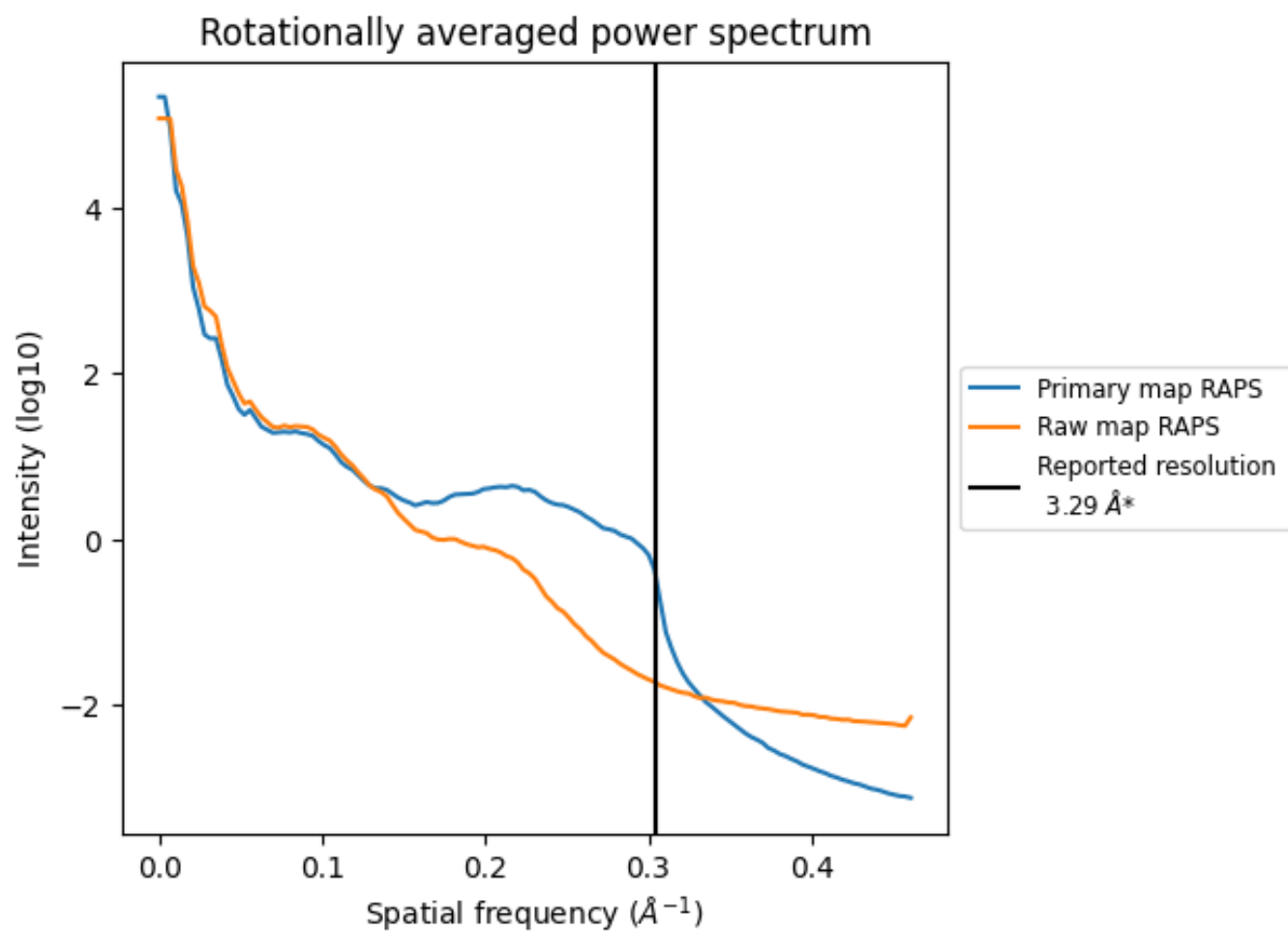
7.2 Volume estimate [i](#)



The volume at the recommended contour level is 241 nm³; this corresponds to an approximate mass of 218 kDa.

The volume estimate graph shows how the enclosed volume varies with the contour level. The recommended contour level is shown as a vertical line and the intersection between the line and the curve gives the volume of the enclosed surface at the given level.

7.3 Rotationally averaged power spectrum ⓘ

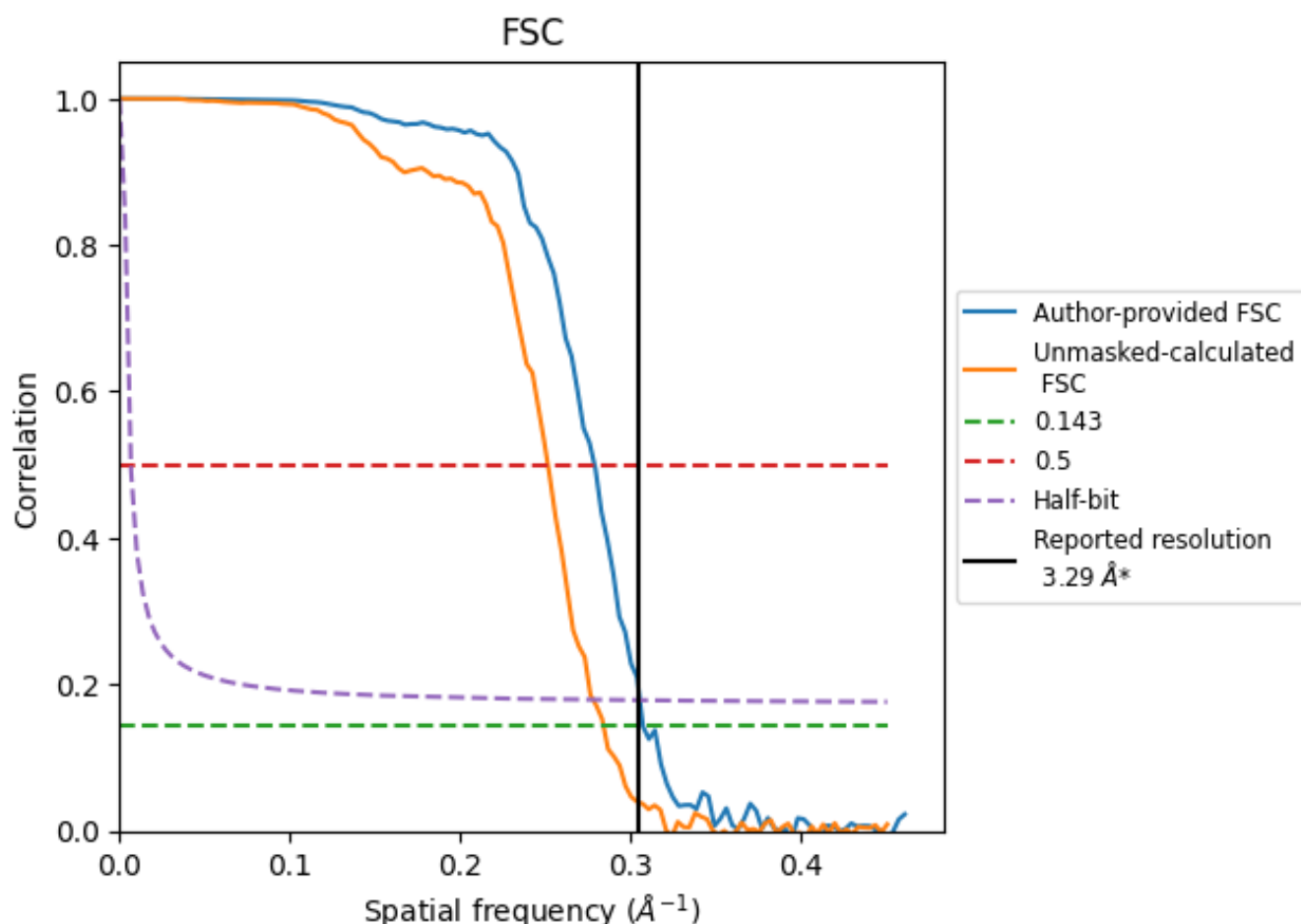


*Reported resolution corresponds to spatial frequency of 0.304 Å⁻¹

8 Fourier-Shell correlation [i](#)

Fourier-Shell Correlation (FSC) is the most commonly used method to estimate the resolution of single-particle and subtomogram-averaged maps. The shape of the curve depends on the imposed symmetry, mask and whether or not the two 3D reconstructions used were processed from a common reference. The reported resolution is shown as a black line. A curve is displayed for the half-bit criterion in addition to lines showing the 0.143 gold standard cut-off and 0.5 cut-off.

8.1 FSC [i](#)



*Reported resolution corresponds to spatial frequency of 0.304 Å⁻¹

8.2 Resolution estimates [i](#)

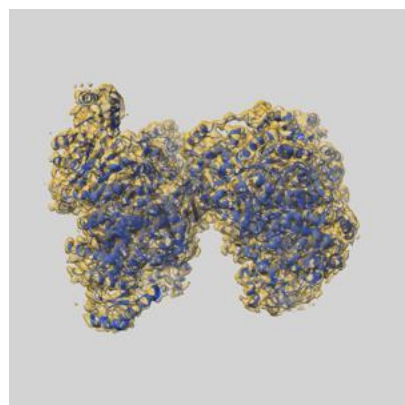
Resolution estimate (Å)	Estimation criterion (FSC cut-off)		
	0.143	0.5	Half-bit
Reported by author	3.29	-	-
Author-provided FSC curve	3.26	3.59	3.27
Unmasked-calculated*	3.52	3.98	3.60

*Resolution estimate based on FSC curve calculated by comparison of deposited half-maps.

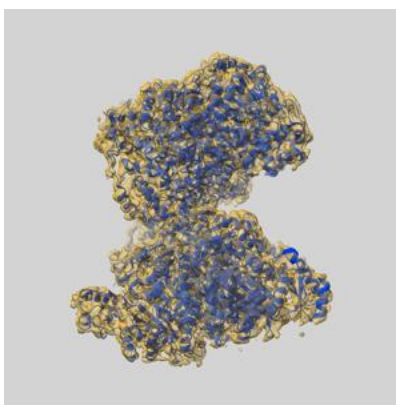
9 Map-model fit [i](#)

This section contains information regarding the fit between EMDB map EMD-15037 and PDB model 7ZZ8. Per-residue inclusion information can be found in section [3](#) on page [8](#).

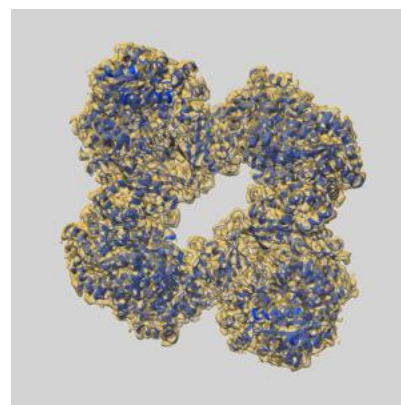
9.1 Map-model overlay [i](#)



X



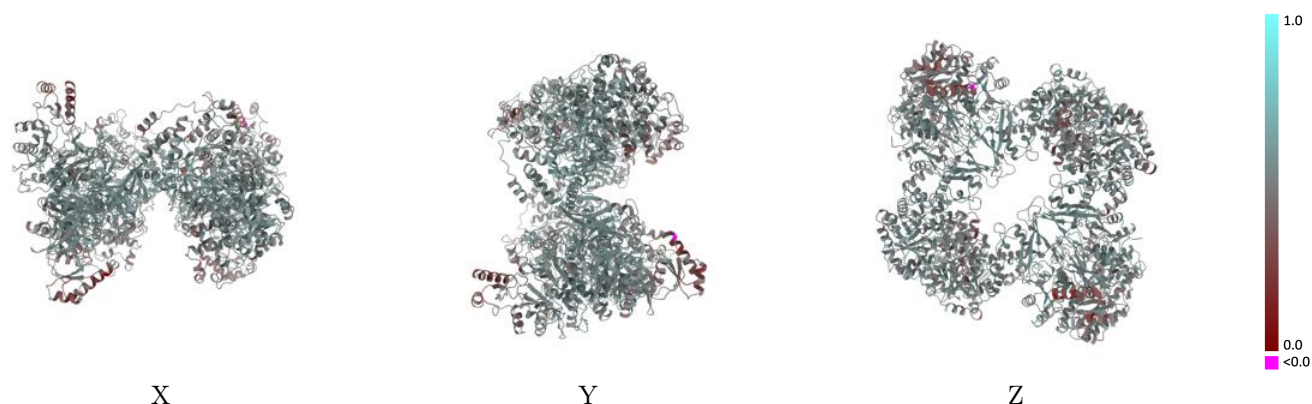
Y



Z

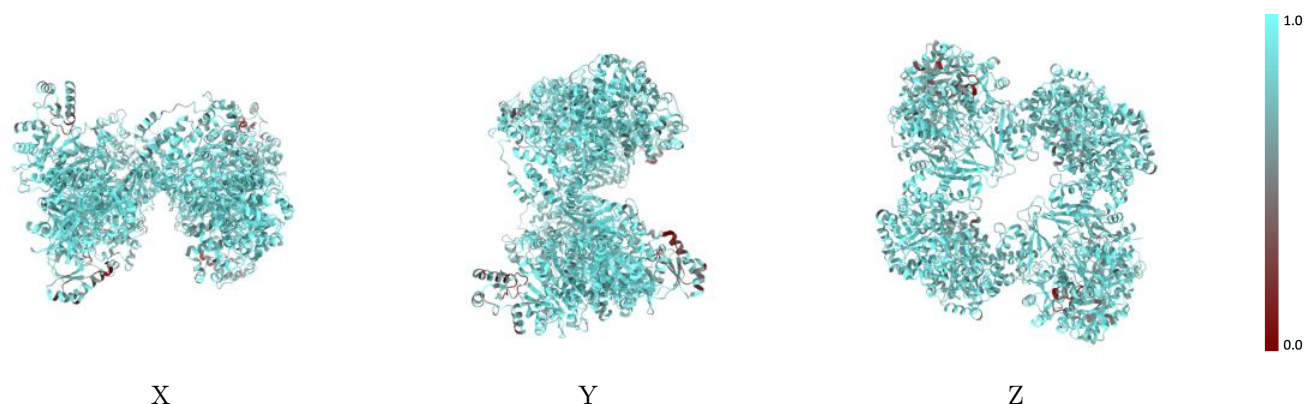
The images above show the 3D surface view of the map at the recommended contour level 0.15 at 50% transparency in yellow overlaid with a ribbon representation of the model coloured in blue. These images allow for the visual assessment of the quality of fit between the atomic model and the map.

9.2 Q-score mapped to coordinate model [i](#)



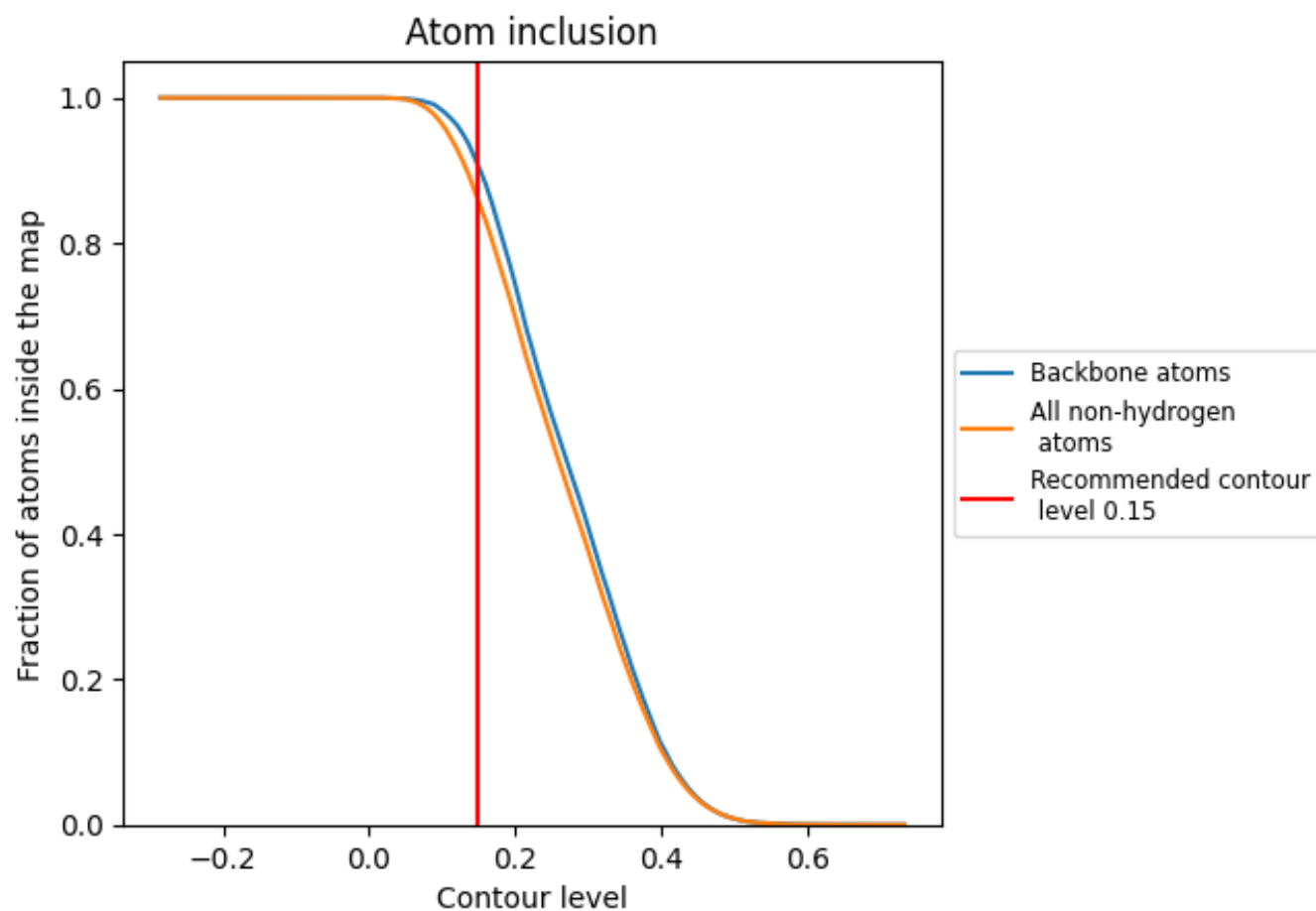
The images above show the model with each residue coloured according to its Q-score. This shows their resolvability in the map with higher Q-score values reflecting better resolvability. Please note: Q-score is calculating the resolvability of atoms, and thus high values are only expected at resolutions at which atoms can be resolved. Low Q-score values may therefore be expected for many entries.

9.3 Atom inclusion mapped to coordinate model [i](#)



The images above show the model with each residue coloured according to its atom inclusion. This shows to what extent they are inside the map at the recommended contour level (0.15).

9.4 Atom inclusion [i](#)



At the recommended contour level, 91% of all backbone atoms, 86% of all non-hydrogen atoms, are inside the map.

9.5 Map-model fit summary ⓘ

The table lists the average atom inclusion at the recommended contour level (0.15) and Q-score for the entire model and for each chain.

Chain	Atom inclusion	Q-score
All	<div><div></div></div> 0.8579	<div><div></div></div> 0.5210
A	<div><div></div></div> 0.8643	<div><div></div></div> 0.5200
B	<div><div></div></div> 0.8653	<div><div></div></div> 0.5220
C	<div><div></div></div> 0.8549	<div><div></div></div> 0.5160
D	<div><div></div></div> 0.8659	<div><div></div></div> 0.5250

