



## wwPDB EM Validation Summary Report ⓘ

Jul 14, 2024 – 05:49 am BST

PDB ID : 8AVX  
EMDB ID : EMD-15686  
Title : Cryo-EM structure of DrBphP in Pfr state  
Authors : Wahlgren, W.Y.; Takala, H.; Westenhoff, S.  
Deposited on : 2022-08-27  
Resolution : 3.50 Å(reported)  
Based on initial model : 4Q0J

This is a wwPDB EM Validation Summary Report for a publicly released PDB entry.

We welcome your comments at [validation@mail.wwpdb.org](mailto:validation@mail.wwpdb.org)

A user guide is available at

<https://www.wwpdb.org/validation/2017/EMValidationReportHelp>  
with specific help available everywhere you see the ⓘ symbol.

The types of validation reports are described at

<http://www.wwpdb.org/validation/2017/FAQs#types>.

---

The following versions of software and data (see [references ⓘ](#)) were used in the production of this report:

EMDB validation analysis : 0.0.1.dev92  
Mogul : 1.8.4, CSD as541be (2020)  
MolProbity : 4.02b-467  
buster-report : 1.1.7 (2018)  
Percentile statistics : 20191225.v01 (using entries in the PDB archive December 25th 2019)  
MapQ : 1.9.13  
Ideal geometry (proteins) : Engh & Huber (2001)  
Ideal geometry (DNA, RNA) : Parkinson et al. (1996)  
Validation Pipeline (wwPDB-VP) : 2.37.1

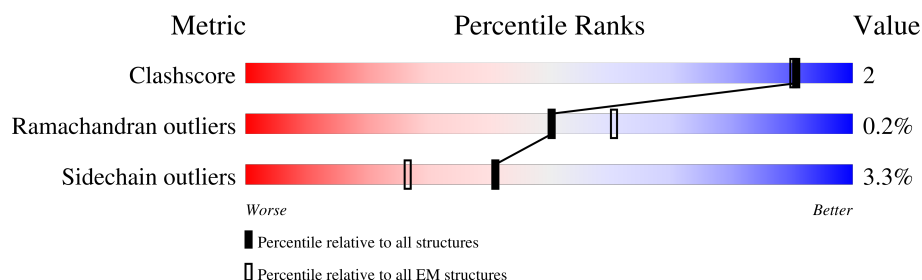
# 1 Overall quality at a glance

The following experimental techniques were used to determine the structure:

*ELECTRON MICROSCOPY*

The reported resolution of this entry is 3.50 Å.

Percentile scores (ranging between 0-100) for global validation metrics of the entry are shown in the following graphic. The table shows the number of entries on which the scores are based.



Metric	Whole archive (#Entries)	EM structures (#Entries)
Clashscore	158937	4297
Ramachandran outliers	154571	4023
Sidechain outliers	154315	3826

The table below summarises the geometric issues observed across the polymeric chains and their fit to the map. The red, orange, yellow and green segments of the bar indicate the fraction of residues that contain outliers for  $\geq 3$ , 2, 1 and 0 types of geometric quality criteria respectively. A grey segment represents the fraction of residues that are not modelled. The numeric value for each fraction is indicated below the corresponding segment, with a dot representing fractions  $\leq 5\%$ . The upper red bar (where present) indicates the fraction of residues that have poor fit to the EM map (all-atom inclusion  $< 40\%$ ). The numeric value is given above the bar.

Mol	Chain	Length	Quality of chain
1	A	938	
1	B	938	

## 2 Entry composition

There are 2 unique types of molecules in this entry. The entry contains 7427 atoms, of which 0 are hydrogens and 0 are deuteriums.

In the tables below, the AltConf column contains the number of residues with at least one atom in alternate conformation and the Trace column contains the number of residues modelled with at most 2 atoms.

- Molecule 1 is a protein called Bacteriophytochrome,Response regulator.

Mol	Chain	Residues	Atoms					AltConf	Trace
1	A	480	Total	C	N	O	S	0	0
			3668	2323	659	675	11		
1	B	481	Total	C	N	O	S	0	0
			3673	2326	660	676	11		

There are 68 discrepancies between the modelled and reference sequences:

Chain	Residue	Modelled	Actual	Comment	Reference
A	-13	MET	-	initiating methionine	UNP Q9RZA4
A	-12	ALA	-	expression tag	UNP Q9RZA4
A	-11	SER	-	expression tag	UNP Q9RZA4
A	-10	MET	-	expression tag	UNP Q9RZA4
A	-9	THR	-	expression tag	UNP Q9RZA4
A	-8	GLY	-	expression tag	UNP Q9RZA4
A	-7	GLY	-	expression tag	UNP Q9RZA4
A	-6	GLN	-	expression tag	UNP Q9RZA4
A	-5	GLN	-	expression tag	UNP Q9RZA4
A	-4	MET	-	expression tag	UNP Q9RZA4
A	-3	GLY	-	expression tag	UNP Q9RZA4
A	-2	ARG	-	expression tag	UNP Q9RZA4
A	-1	GLY	-	expression tag	UNP Q9RZA4
A	0	SER	-	expression tag	UNP Q9RZA4
A	756	ALA	-	linker	UNP Q9RZA4
A	757	SER	-	linker	UNP Q9RZA4
A	758	SER	-	linker	UNP Q9RZA4
A	759	ALA	-	linker	UNP Q9RZA4
A	760	GLY	-	linker	UNP Q9RZA4
A	761	GLY	-	linker	UNP Q9RZA4
A	762	SER	-	linker	UNP Q9RZA4
A	763	ALA	-	linker	UNP Q9RZA4
A	764	GLY	-	linker	UNP Q9RZA4
A	765	SER	-	linker	UNP Q9RZA4
A	766	ALA	-	linker	UNP Q9RZA4
A	767	GLY	-	linker	UNP Q9RZA4

*Continued on next page...*

*Continued from previous page...*

Chain	Residue	Modelled	Actual	Comment	Reference
A	917	LEU	-	expression tag	UNP Q9RZA5
A	918	GLU	-	expression tag	UNP Q9RZA5
A	919	HIS	-	expression tag	UNP Q9RZA5
A	920	HIS	-	expression tag	UNP Q9RZA5
A	921	HIS	-	expression tag	UNP Q9RZA5
A	922	HIS	-	expression tag	UNP Q9RZA5
A	923	HIS	-	expression tag	UNP Q9RZA5
A	924	HIS	-	expression tag	UNP Q9RZA5
B	-13	MET	-	initiating methionine	UNP Q9RZA4
B	-12	ALA	-	expression tag	UNP Q9RZA4
B	-11	SER	-	expression tag	UNP Q9RZA4
B	-10	MET	-	expression tag	UNP Q9RZA4
B	-9	THR	-	expression tag	UNP Q9RZA4
B	-8	GLY	-	expression tag	UNP Q9RZA4
B	-7	GLY	-	expression tag	UNP Q9RZA4
B	-6	GLN	-	expression tag	UNP Q9RZA4
B	-5	GLN	-	expression tag	UNP Q9RZA4
B	-4	MET	-	expression tag	UNP Q9RZA4
B	-3	GLY	-	expression tag	UNP Q9RZA4
B	-2	ARG	-	expression tag	UNP Q9RZA4
B	-1	GLY	-	expression tag	UNP Q9RZA4
B	0	SER	-	expression tag	UNP Q9RZA4
B	756	ALA	-	linker	UNP Q9RZA4
B	757	SER	-	linker	UNP Q9RZA4
B	758	SER	-	linker	UNP Q9RZA4
B	759	ALA	-	linker	UNP Q9RZA4
B	760	GLY	-	linker	UNP Q9RZA4
B	761	GLY	-	linker	UNP Q9RZA4
B	762	SER	-	linker	UNP Q9RZA4
B	763	ALA	-	linker	UNP Q9RZA4
B	764	GLY	-	linker	UNP Q9RZA4
B	765	SER	-	linker	UNP Q9RZA4
B	766	ALA	-	linker	UNP Q9RZA4
B	767	GLY	-	linker	UNP Q9RZA4
B	917	LEU	-	expression tag	UNP Q9RZA5
B	918	GLU	-	expression tag	UNP Q9RZA5
B	919	HIS	-	expression tag	UNP Q9RZA5
B	920	HIS	-	expression tag	UNP Q9RZA5
B	921	HIS	-	expression tag	UNP Q9RZA5
B	922	HIS	-	expression tag	UNP Q9RZA5
B	923	HIS	-	expression tag	UNP Q9RZA5
B	924	HIS	-	expression tag	UNP Q9RZA5

- 

Mol	Chain	Residues	Atoms				AltConf
2	A	1	Total 43	C 33	N 4	O 6	0
2	B	1	Total 43	C 33	N 4	O 6	0





PRO	GLN	LEU	GLU	ALA	HIS	LEU	TYR	LEU	GLU	GLY	SER	THR	GLY	ILE	SER	ILE	GLY	ASP	E481	GLN	ASP	E381	SER	THR	GLY	PRO	GLY	THR	ALA	MET	ALA
GLN	LEU	GLU	TYR	LEU	ALA	VAL	SER	THR	GLY	ILE	ASP	PHE	SER	VAL	ALA	GLY	ASP	PRO	E487	GLY	GLY	A385	THR	GLY	PRO	GLY	THR	ALA	SER	ALA	
HIS	HIS	VAL	SER	PRO	GLY	VAL	SER	THR	ASP	ILE	ASP	ASP	THR	VAL	ALA	GLY	ASP	PRO	E489	PRO	SER	P386	THR	GLY	PRO	GLY	THR	ALA	MET	ALA	
HIS	HIS	LEU	HIS	LEU	GLY	THR	THR	THR	ASP	THR	GLY	CYS	THR	GLU	ALA	GLY	ASP	THR	E490	PRO	SER	D389	THR	GLY	PRO	GLY	THR	ALA	GLY	ALA	
HIS	THR	THR	GLU	THR	ALA	GLY	LEU	LEU	ASP	ALA	GLY	THR	THR	VAL	ALA	GLY	THR	PRO	Q492	GLN	SER	A393	THR	GLY	PRO	GLY	THR	ALA	GLN	GLN	
THR	SER	ASN	LEU	THR	GLY	PRO	ASP	ASP	ASP	ILE	PRO	ASP	PRO	ILE	ALA	ASP	GLU	THR	D493	THR	ARG	A182	THR	GLY	PRO	GLY	THR	ALA	MET	ALA	
ASN	VAL	GLY	VAL	THR	ALA	ALA	VAL	LEU	ASP	ILE	SER	ALA	ILE	ALA	GLY	ASP	GLU	ARG	D496	GLY	ARG	E396	THR	GLY	PRO	GLY	THR	ALA	GLY	ARG	
PRO	PRO	PRO	ARG	PRO	GLU	GLU	ARG	GLY	PRO	PRO	GLU	PRO	GLU	PRO	THR	GLY	ILE	THR	A501	THR	THR	T397	THR	GLY	PRO	GLY	THR	ALA	SER	ALA	
ASP	VAL	ASP	GLY	ASP	PRO	GLY	GLY	PRO	PRO	GLN	PRO	PRO	ALA	THR	GLU	ALA	THR	PHE	E504	GLY	THR	D417	THR	GLY	PRO	GLY	THR	ALA	SER	ALA	
VAL	LYS	LEU	LEU	GLY	LEU	GLY	LEU	GLY	GLY	GLU	GLU	GLY	ALA	GLU	LEU	GLY	LEU	LEU	E504	GLY	THR	L418	THR	GLY	PRO	GLY	THR	ALA	SER	ALA	
ARG	ALA	ALA	ALA	ALA	ALA	ALA	ALA	ALA	PRO	ARG	ARG	ALA	ALA	ILE	LEU	ARG	LEU	ARG	R510	GLY	ARG	S421	THR	GLY	PRO	GLY	THR	ALA	SER	ALA	
ALA	ALA	ALA	LEU	ALA	ALA	ALA	LEU	ASP	VAL	PHE	PRO	ASP	VAL	ILE	LEU	GLY	GLU	GLY	D511	GLY	THR	A422	THR	GLY	PRO	GLY	THR	ALA	SER	ALA	
ALA	ALA	LEU	LEU	LEU	ALA	ALA	LEU	ALA	ILE	PHE	LEU	SER	ALA	LEU	LEU	GLY	ALA	ASP	L512	THR	THR	A423	THR	GLY	PRO	GLY	THR	ALA	SER	ALA	
GLN	LEU	LEU	GLY	LEU	SER	SER	LEU	SER	ASP	GLN	GLY	SER	ALA	LEU	LEU	GLY	ASP	LEU	R514	THR	ARG	G424	THR	GLY	PRO	GLY	THR	ALA	SER	ALA	
GLN	GLN	GLY	GLY	GLY	GLY	GLY	GLY	GLY	ASP	GLY	GLY	SER	ALA	LEU	LEU	GLY	ASP	LEU	A515	THR	ARG	I428	THR	GLY	PRO	GLY	THR	ALA	SER	ALA	
ASN	ASN	ALA	ALA	ALA	ALA	ALA	ALA	GLY	ALA	LEU	GLY	GLY	ALA	LEU	LEU	GLY	ASP	LEU	L516	THR	SER	E432	THR	GLY	PRO	GLY	THR	ALA	SER	ALA	
TYR	TYR	TYR	THR	TYR	TYR	TYR	GLY	SER	LEU	GLY	SER	THR	GLY	LEU	LEU	GLY	ASP	LEU	T517	THR	THR	G433	THR	GLY	PRO	GLY	THR	ALA	SER	ALA	
LEU	LEU	LEU	GLY	LEU	LEU	LEU	GLY	ALA	ARG	GLY	ARG	GLY	ALA	LEU	LEU	GLY	ASP	LEU	N520	GLN	THR	W440	THR	GLY	PRO	GLY	THR	ALA	SER	ALA	
THR	THR	THR	GLY	THR	THR	THR	GLY	GLY	ASP	GLY	ASP	SER	ALA	LEU	LEU	GLY	ASP	LEU	A521	GLN	THR	Y307	THR	GLY	PRO	GLY	THR	ALA	SER	ALA	
LYS	PRO	PRO	PHE	PRO	PRO	PRO	PRO	GLY	LEU	ALA	LEU	ALA	VAL	LEU	LEU	GLY	ASP	LEU	GLY	PHE	THR	Y307	THR	GLY	PRO	GLY	THR	ALA	SER	ALA	
PRO	SER	SER	SER	SER	SER	SER	ASP	GLY	LEU	GLY	LEU	LEU	VAL	LEU	LEU	GLY	ASP	LEU	GLY	ILE	ALA	E320	THR	GLY	PRO	GLY	THR	ALA	SER	ALA	
THR	THR	THR	THR	THR	THR	THR	ASP	ASP	LEU	GLY	LEU	LEU	VAL	LEU	LEU	GLY	ASP	LEU	ARG	THR	THR	E320	THR	GLY	PRO	GLY	THR	ALA	SER	ALA	
GLU	GLU	GLU	ILE	GLU	GLU	GLU	ILE	ILE	ILE	GLY	GLY	GLY	GLY	ILE	ILE	GLY	ASP	LEU	TYR	THR	THR	R302	THR	GLY	PRO	GLY	THR	ALA	SER	ALA	
ASP	PHE	LEU	LEU	ASP	ASP	ASP	LEU	LEU	LEU	LEU	ARG	ARG	VAL	LEU	LEU	GLY	ASP	LEU	GLY	PHE	THR	Y307	THR	GLY	PRO	GLY	THR	ALA	SER	ALA	
LEU	LEU	LEU	ASP	LEU	LEU	LEU	ASP	ASP	ASP	GLY	ASN	GLY	VAL	LEU	LEU	GLY	ASP	LEU	THR	THR	THR	Y307	THR	GLY	PRO	GLY	THR	ALA	SER	ALA	
THR	THR	THR	LEU	THR	THR	THR	LEU	LEU	LEU	LEU	GLY	GLY	VAL	LEU	LEU	GLY	ASP	LEU	THR	THR	THR	Y307	THR	GLY	PRO	GLY	THR	ALA	SER	ALA	
GLY	GLY	GLY	LEU	GLY	GLY	GLY	LEU	LEU	LEU	LEU	GLY	GLY	VAL	LEU	LEU	GLY	ASP	LEU	THR	THR	THR	Y307	THR	GLY	PRO	GLY	THR	ALA	SER	ALA	
THR	THR	THR	LEU	THR	THR	THR	LEU	LEU	LEU	LEU	GLY	GLY	VAL	LEU	LEU	GLY	ASP	LEU	THR	THR	THR	Y307	THR	GLY	PRO	GLY	THR	ALA	SER	ALA	
ASP	THR	THR	ARG	ARG	ARG	ARG	ARG	ARG	ARG	ARG	GLY	GLY	VAL	LEU	LEU	GLY	ASP	LEU	HIS	HIS	THR	G71	THR	GLY	PRO	GLY	THR	ALA	SER	ALA	
LEU	LEU	LEU	VAL	LEU	LEU	LEU	VAL	VAL	VAL	ILE	PRO	ARG	GLY	VAL	VAL	GLY	THR	VAL	HIS	THR	THR	G71	THR	GLY	PRO	GLY	THR	ALA	SER	ALA	
THR	THR	THR	VAL	THR	THR	THR	ASP	ASP	ASP	LYS	THR	THR	GLY	VAL	VAL	GLY	THR	VAL	HIS	THR	THR	G71	THR	GLY	PRO	GLY	THR	ALA	SER	ALA	
ARG	ARG	ARG	ARG	ARG	ARG	ARG	ARG	ARG	ARG	THR	THR	THR	GLY	VAL	VAL	GLY	THR	VAL	HIS	THR	THR	G71	THR	GLY	PRO	GLY	THR	ALA	SER	ALA	
LEU	LEU	LEU	VAL	LEU	LEU	LEU	VAL	VAL	VAL	THR	THR	THR	GLY	VAL	VAL	GLY	THR	VAL	HIS	THR	THR	G71	THR	GLY	PRO	GLY	THR	ALA	SER	ALA	
THR	THR	THR	VAL	THR	THR	THR	ASP	ASP	ASP	THR	THR	THR	GLY	VAL	VAL	GLY	THR	VAL	HIS	THR	THR	G71	THR	GLY	PRO	GLY	THR	ALA	SER	ALA	
GLY	GLY	GLY	ALA	ALA	ALA	ALA	ALA	ALA	ALA	THR	THR	THR	GLY	VAL	VAL	GLY	THR	VAL	HIS	THR	THR	G71	THR	GLY	PRO	GLY	THR	ALA	SER	ALA	
THR	THR	THR	ALA	ALA	ALA	ALA	ALA	ALA	ALA	THR	THR	THR	GLY	VAL	VAL	GLY	THR	VAL	HIS	THR	THR	G71	THR	GLY	PRO	GLY	THR	ALA	SER	ALA	
THR	THR	THR	ALA	ALA	ALA	ALA	ALA	ALA	ALA	THR	THR	THR	GLY	VAL	VAL	GLY	THR	VAL	HIS	THR	THR	G71	THR	GLY	PRO	GLY	THR	ALA	SER	ALA	
THR	THR	THR	ALA	ALA	ALA	ALA	ALA	ALA	ALA	THR	THR	THR	GLY	VAL	VAL	GLY	THR	VAL	HIS	THR	THR	G71	THR	GLY	PRO	GLY	THR	ALA	SER	ALA	
THR	THR	THR	ALA	ALA	ALA	ALA	ALA	ALA	ALA	THR	THR	THR	GLY	VAL	VAL	GLY	THR	VAL	HIS	THR	THR	G71	THR	GLY	PRO	GLY	THR	ALA	SER	ALA	
THR	THR	THR	ALA	ALA	ALA	ALA	ALA	ALA	ALA	THR	THR	THR	GLY	VAL	VAL	GLY	THR	VAL	HIS	THR	THR	G71	THR	GLY	PRO	GLY	THR	ALA	SER	ALA	
THR	THR	THR	ALA	ALA	ALA	ALA	ALA	ALA	ALA	THR	THR	THR	GLY	VAL	VAL	GLY	THR	VAL	HIS	THR	THR	G71	THR	GLY	PRO	GLY	THR	ALA	SER	ALA	
THR	THR	THR	ALA	ALA	ALA	ALA	ALA	ALA	ALA	THR	THR	THR	GLY	VAL	VAL	GLY	THR	VAL	HIS	THR	THR	G71	THR	GLY	PRO	GLY	THR	ALA	SER	ALA	
THR	THR	THR	ALA	ALA	ALA	ALA	ALA	ALA	ALA	THR	THR	THR	GLY	VAL	VAL	GLY	THR	VAL	HIS	THR	THR	G71	THR	GLY	PRO	GLY	THR	ALA	SER	ALA	
THR	THR	THR	ALA	ALA	ALA	ALA	ALA	ALA	ALA	THR	THR	THR	GLY	VAL	VAL	GLY	THR	VAL	HIS	THR	THR	G71	THR	GLY	PRO	GLY	THR	ALA	SER	ALA	
THR	THR	THR	ALA	ALA	ALA	ALA	ALA	ALA	ALA	THR	THR	THR	GLY	VAL	VAL	GLY	THR	VAL	HIS	THR	THR	G71	THR	GLY	PRO	GLY	THR	ALA	SER	ALA	
THR	THR	THR	ALA	ALA	ALA	ALA	ALA	ALA	ALA	THR	THR	THR	GLY	VAL	VAL	GLY	THR	VAL	HIS	THR	THR	G71	THR	GLY	PRO	GLY	THR	ALA	SER	ALA	
THR	THR	THR	ALA	ALA	ALA	ALA	ALA	ALA	ALA	THR	THR	THR	GLY	VAL	VAL	GLY	THR	VAL	HIS	THR	THR	G71	THR	GLY	PRO	GLY	THR	ALA	SER	ALA	
THR	THR	THR	ALA	ALA	ALA	ALA	ALA	ALA	ALA	THR	THR	THR	GLY	VAL	VAL	GLY	THR	VAL	HIS	THR	THR	G71	THR	GLY	PRO	GLY	THR	ALA	SER	ALA	
THR	THR	THR	ALA	ALA	ALA	ALA	ALA	ALA	ALA	THR	THR	THR	GLY	VAL	VAL	GLY	THR	VAL	HIS	THR	THR	G71	THR	GLY	PRO	GLY	THR	ALA	SER	ALA	
THR	THR	THR	ALA	ALA	ALA	ALA	ALA	ALA	ALA	THR	THR	THR	GLY	VAL	VAL	GLY	THR	VAL	HIS	THR	THR	G71	THR	GLY	PRO	GLY	THR	ALA	SER	ALA	
THR	THR	THR	ALA	ALA	ALA	ALA	ALA	ALA	ALA	THR	THR	THR	GLY	VAL	VAL	GLY	THR	VAL	HIS	THR	THR	G71	THR	GLY	PRO	GLY	THR	ALA	SER	ALA	
THR	THR	THR	ALA	ALA	ALA	ALA	ALA	ALA	ALA	THR	THR	THR	GLY	VAL	VAL	GLY	THR	VAL	HIS	THR	THR	G71	THR	GLY	PRO	GLY	THR	ALA	SER	ALA	
THR	THR	THR	ALA	ALA	ALA	ALA	ALA	ALA	ALA	THR	THR	THR	GLY	VAL	VAL	GLY	THR	VAL	HIS	THR	THR	G71	THR	GLY	PRO	GLY	THR	ALA	SER	ALA	
THR	THR	THR	ALA	ALA	ALA	ALA	ALA	ALA	ALA	THR	THR	THR	GLY	VAL	VAL	GLY	THR	VAL	HIS	THR	THR	G71	THR	GLY	PRO	GLY	THR	ALA	SER	ALA	
THR	THR	THR	ALA	ALA	ALA	ALA	ALA	ALA	ALA	THR	THR	THR	GLY	VAL	VAL	GLY	THR	VAL	HIS	THR	THR	G71	THR	GLY	PRO	GLY	THR	ALA	SER	ALA	
THR	THR	THR	ALA	ALA	ALA	ALA	ALA	ALA	ALA	THR	THR	THR	GLY	VAL	VAL	GLY	THR	VAL	HIS	THR	THR	G71	THR	GLY	PRO	GLY	THR	ALA	SER	ALA	
THR	THR	THR	ALA	ALA	ALA	ALA	ALA	ALA	ALA	THR	THR	THR	GLY	VAL	VAL	GLY	THR	VAL	HIS	THR	THR	G71	THR	GLY	PRO	GLY	THR	ALA	SER	ALA	
THR	THR	THR	ALA	ALA	ALA	ALA	ALA	ALA	ALA	THR	THR	THR	GLY	VAL	VAL	GLY	THR	VAL	HIS	THR	THR	G71	THR	GLY	PRO	GLY	THR	ALA	SER	ALA	
THR	THR	THR	ALA	ALA	ALA	ALA	ALA	ALA	ALA	THR	THR	THR	GLY	VAL	VAL	GLY	THR	VAL	HIS	THR	THR	G71	THR	GLY	PRO	GLY	THR	ALA	SER	ALA	
THR	THR	THR	ALA	ALA	ALA	ALA	ALA	ALA	ALA	THR	THR	THR	GLY	VAL	VAL	GLY	THR	VAL	HIS	THR	THR	G71	THR	GLY	PRO	GLY	THR	ALA	SER	ALA	
THR	THR	THR	ALA	ALA	ALA	ALA	ALA	ALA	ALA	THR	THR	THR	GLY	VAL	VAL	GLY	THR	VAL	HIS	THR	THR	G71	THR	GLY	PRO	GLY	THR	ALA	SER	ALA	
THR	THR	THR	ALA	ALA	ALA	ALA	ALA	ALA	ALA	THR	THR	THR	GLY	VAL	VAL	GLY	THR	VAL	HIS	THR	THR	G71	THR	GLY	PRO	GLY	THR				

## 4 Experimental information

Property	Value	Source
EM reconstruction method	SINGLE PARTICLE	Depositor
Imposed symmetry	POINT, Not provided	
Number of particles used	98050	Depositor
Resolution determination method	FSC 0.143 CUT-OFF	Depositor
CTF correction method	NONE	Depositor
Microscope	FEI TITAN KRIOS	Depositor
Voltage (kV)	300	Depositor
Electron dose ( $e^-/\text{\AA}^2$ )	48.3	Depositor
Minimum defocus (nm)	600	Depositor
Maximum defocus (nm)	2600	Depositor
Magnification	Not provided	
Image detector	GATAN K3 BIOQUANTUM (6k x 4k)	Depositor
Maximum map value	1.023	Depositor
Minimum map value	-0.637	Depositor
Average map value	-0.000	Depositor
Map value standard deviation	0.014	Depositor
Recommended contour level	0.13	Depositor
Map size ( $\text{\AA}$ )	386.0416, 386.0416, 386.0416	wwPDB
Map dimensions	448, 448, 448	wwPDB
Map angles ( $^\circ$ )	90.0, 90.0, 90.0	wwPDB
Pixel spacing ( $\text{\AA}$ )	0.8617, 0.8617, 0.8617	Depositor



## 5 Model quality

### 5.1 Standard geometry

Bond lengths and bond angles in the following residue types are not validated in this section: BLA

The Z score for a bond length (or angle) is the number of standard deviations the observed value is removed from the expected value. A bond length (or angle) with  $|Z| > 5$  is considered an outlier worth inspection. RMSZ is the root-mean-square of all Z scores of the bond lengths (or angles).

Mol	Chain	Bond lengths		Bond angles	
		RMSZ	$\# Z  > 5$	RMSZ	$\# Z  > 5$
1	A	0.28	0/3756	0.59	0/5133
1	B	0.28	0/3762	0.58	0/5143
All	All	0.28	0/7518	0.58	0/10276

There are no bond length outliers.

There are no bond angle outliers.

There are no chirality outliers.

There are no planarity outliers.

### 5.2 Too-close contacts

In the following table, the Non-H and H(model) columns list the number of non-hydrogen atoms and hydrogen atoms in the chain respectively. The H(added) column lists the number of hydrogen atoms added and optimized by MolProbity. The Clashes column lists the number of clashes within the asymmetric unit, whereas Symm-Clashes lists symmetry-related clashes.

Mol	Chain	Non-H	H(model)	H(added)	Clashes	Symm-Clashes
1	A	3668	0	3646	12	0
1	B	3673	0	3652	12	0
2	A	43	0	32	0	0
2	B	43	0	32	1	0
All	All	7427	0	7362	23	0

The all-atom clashscore is defined as the number of clashes found per 1000 atoms (including hydrogen atoms). The all-atom clashscore for this structure is 2.

The worst 5 of 23 close contacts within the same asymmetric unit are listed below, sorted by their clash magnitude.

Atom-1	Atom-2	Interatomic distance (Å)	Clash overlap (Å)
1:A:324:VAL:HG13	1:A:486:GLY:HA2	1.74	0.68
1:B:207:ASP:HB3	2:B:1000:BLA:HBB	1.77	0.66
1:A:107:ALA:O	1:A:109:GLY:N	2.32	0.63
1:B:375:ARG:HH22	1:B:377:GLN:HE21	1.56	0.53
1:B:85:LEU:HD11	1:B:115:VAL:HG11	1.90	0.53

There are no symmetry-related clashes.

## 5.3 Torsion angles [i](#)

### 5.3.1 Protein backbone [i](#)

In the following table, the Percentiles column shows the percent Ramachandran outliers of the chain as a percentile score with respect to all PDB entries followed by that with respect to all EM entries.

The Analysed column shows the number of residues for which the backbone conformation was analysed, and the total number of residues.

Mol	Chain	Analysed	Favoured	Allowed	Outliers	Percentiles	
1	A	472/938 (50%)	449 (95%)	22 (5%)	1 (0%)	47	81
1	B	475/938 (51%)	453 (95%)	21 (4%)	1 (0%)	47	81
All	All	947/1876 (50%)	902 (95%)	43 (4%)	2 (0%)	50	81

All (2) Ramachandran outliers are listed below:

Mol	Chain	Res	Type
1	A	358	ASP
1	B	358	ASP

### 5.3.2 Protein sidechains [i](#)

In the following table, the Percentiles column shows the percent sidechain outliers of the chain as a percentile score with respect to all PDB entries followed by that with respect to all EM entries.

The Analysed column shows the number of residues for which the sidechain conformation was analysed, and the total number of residues.

*Continued on next page...*

*Continued from previous page...*

Mol	Chain	Analysed	Rotameric	Outliers	Percentiles
1	A	378/746 (51%)	366 (97%)	12 (3%)	39 69
1	B	378/746 (51%)	365 (97%)	13 (3%)	37 68
All	All	756/1492 (51%)	731 (97%)	25 (3%)	41 68

5 of 25 residues with a non-rotameric sidechain are listed below:

Mol	Chain	Res	Type
1	B	154	ARG
1	B	273	LEU
1	B	493	ASP
1	B	256	THR
1	B	286	LEU

Sometimes sidechains can be flipped to improve hydrogen bonding and reduce clashes. All (1) such sidechains are listed below:

Mol	Chain	Res	Type
1	A	513	ASN

### 5.3.3 RNA [i](#)

There are no RNA molecules in this entry.

## 5.4 Non-standard residues in protein, DNA, RNA chains [i](#)

There are no non-standard protein/DNA/RNA residues in this entry.

## 5.5 Carbohydrates [i](#)

There are no monosaccharides in this entry.

## 5.6 Ligand geometry [i](#)

2 ligands are modelled in this entry.

In the following table, the Counts columns list the number of bonds (or angles) for which Mogul statistics could be retrieved, the number of bonds (or angles) that are observed in the model and

the number of bonds (or angles) that are defined in the Chemical Component Dictionary. The Link column lists molecule types, if any, to which the group is linked. The Z score for a bond length (or angle) is the number of standard deviations the observed value is removed from the expected value. A bond length (or angle) with  $|Z| > 2$  is considered an outlier worth inspection. RMSZ is the root-mean-square of all Z scores of the bond lengths (or angles).

Mol	Type	Chain	Res	Link	Bond lengths			Bond angles		
					Counts	RMSZ	# Z  > 2	Counts	RMSZ	# Z  > 2
2	BLA	B	1000	-	42,46,46	1.38	5 (11%)	53,67,67	1.17	4 (7%)
2	BLA	A	1000	-	42,46,46	1.45	5 (11%)	53,67,67	1.10	4 (7%)

In the following table, the Chirals column lists the number of chiral outliers, the number of chiral centers analysed, the number of these observed in the model and the number defined in the Chemical Component Dictionary. Similar counts are reported in the Torsion and Rings columns. '-' means no outliers of that kind were identified.

Mol	Type	Chain	Res	Link	Chirals	Torsions	Rings
2	BLA	B	1000	-	-	9/26/74/74	0/4/4/4
2	BLA	A	1000	-	-	14/26/74/74	0/4/4/4

The worst 5 of 10 bond length outliers are listed below:

Mol	Chain	Res	Type	Atoms	Z	Observed(Å)	Ideal(Å)
2	A	1000	BLA	CHA-C4D	6.10	1.40	1.35
2	B	1000	BLA	CHA-C4D	5.45	1.39	1.35
2	B	1000	BLA	C3B-C2B	3.12	1.43	1.37
2	A	1000	BLA	C3B-C2B	2.99	1.43	1.37
2	B	1000	BLA	CAC-C3C	-2.56	1.40	1.47

The worst 5 of 8 bond angle outliers are listed below:

Mol	Chain	Res	Type	Atoms	Z	Observed(°)	Ideal(°)
2	B	1000	BLA	CMB-C2B-C1B	3.83	128.96	124.17
2	A	1000	BLA	CMB-C2B-C1B	3.44	128.47	124.17
2	B	1000	BLA	CMC-C2C-C1C	3.13	128.75	121.39
2	A	1000	BLA	CHA-C4D-ND	-3.12	124.49	128.83
2	B	1000	BLA	CHA-C4D-ND	-3.08	124.55	128.83

There are no chirality outliers.

5 of 23 torsion outliers are listed below:

Mol	Chain	Res	Type	Atoms
2	A	1000	BLA	NA-C4A-CHB-C1B

*Continued on next page...*

*Continued from previous page...*

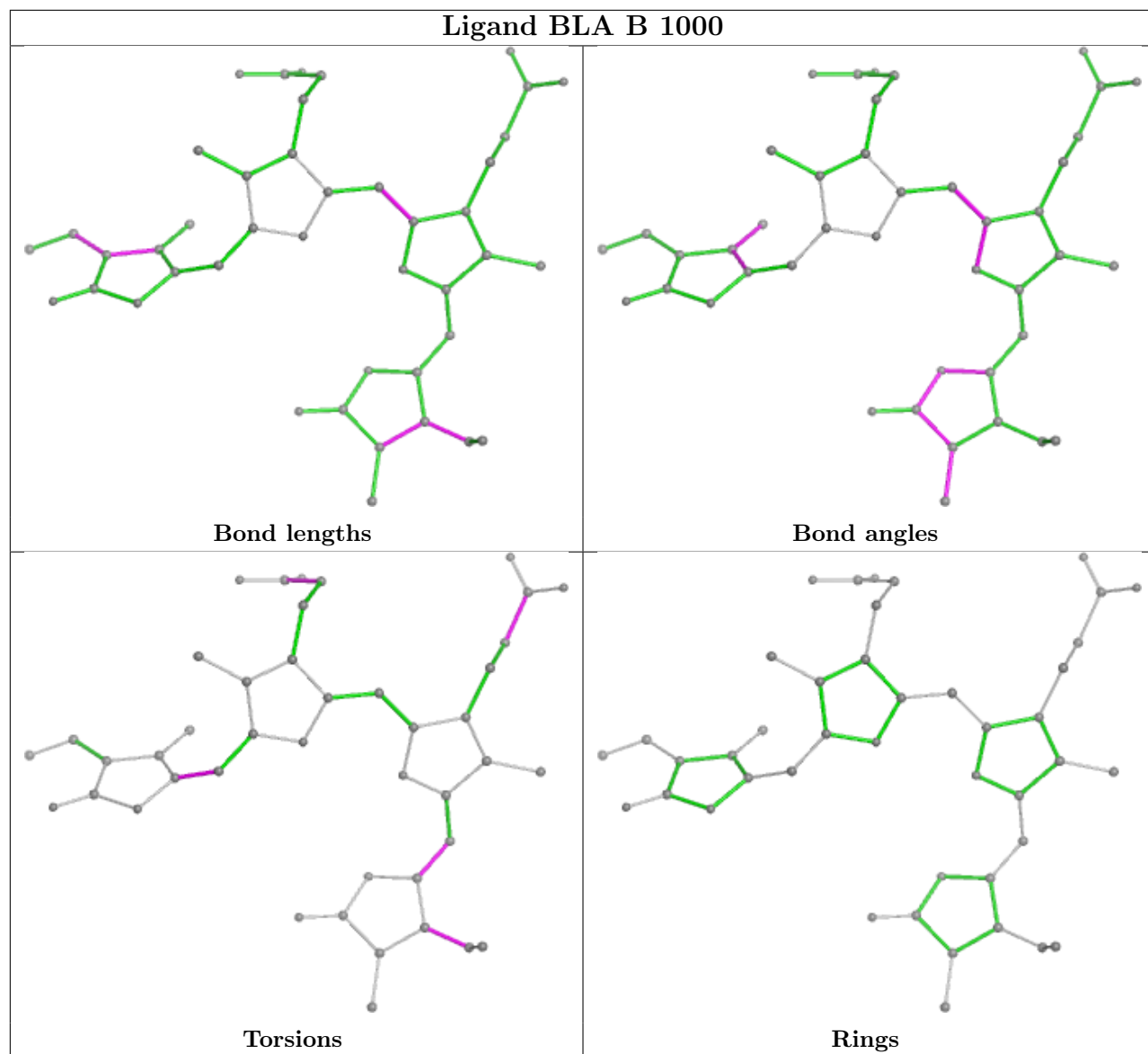
Mol	Chain	Res	Type	Atoms
2	A	1000	BLA	C3A-C4A-CHB-C1B
2	A	1000	BLA	NB-C1B-CHB-C4A
2	A	1000	BLA	C2B-C1B-CHB-C4A
2	A	1000	BLA	C2C-C3C-CAC-CBC

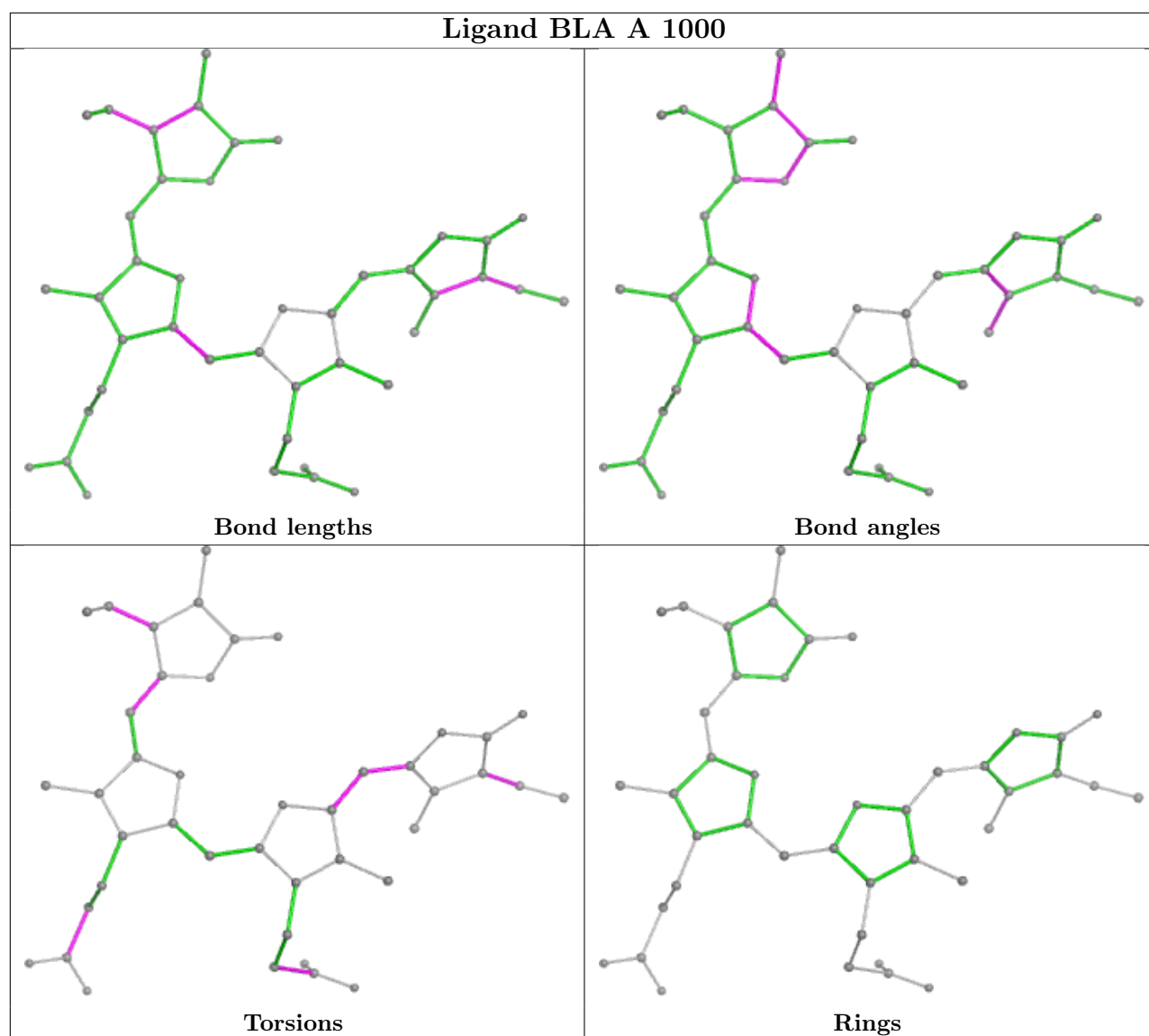
There are no ring outliers.

1 monomer is involved in 1 short contact:

Mol	Chain	Res	Type	Clashes	Symm-Clashes
2	B	1000	BLA	1	0

The following is a two-dimensional graphical depiction of Mogul quality analysis of bond lengths, bond angles, torsion angles, and ring geometry for all instances of the Ligand of Interest. In addition, ligands with molecular weight > 250 and outliers as shown on the validation Tables will also be included. For torsion angles, if less than 5% of the Mogul distribution of torsion angles is within 10 degrees of the torsion angle in question, then that torsion angle is considered an outlier. Any bond that is central to one or more torsion angles identified as an outlier by Mogul will be highlighted in the graph. For rings, the root-mean-square deviation (RMSD) between the ring in question and similar rings identified by Mogul is calculated over all ring torsion angles. If the average RMSD is greater than 60 degrees and the minimal RMSD between the ring in question and any Mogul-identified rings is also greater than 60 degrees, then that ring is considered an outlier. The outliers are highlighted in purple. The color gray indicates Mogul did not find sufficient equivalents in the CSD to analyse the geometry.





## 5.7 Other polymers [i](#)

There are no such residues in this entry.

## 5.8 Polymer linkage issues [i](#)

There are no chain breaks in this entry.

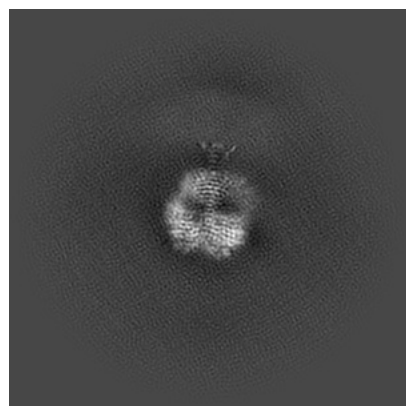
## 6 Map visualisation [i](#)

This section contains visualisations of the EMDB entry EMD-15686. These allow visual inspection of the internal detail of the map and identification of artifacts.

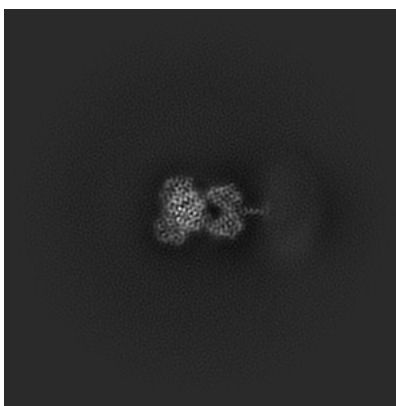
Images derived from a raw map, generated by summing the deposited half-maps, are presented below the corresponding image components of the primary map to allow further visual inspection and comparison with those of the primary map.

### 6.1 Orthogonal projections [i](#)

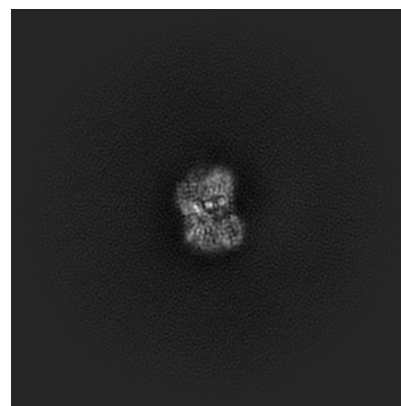
#### 6.1.1 Primary map



X

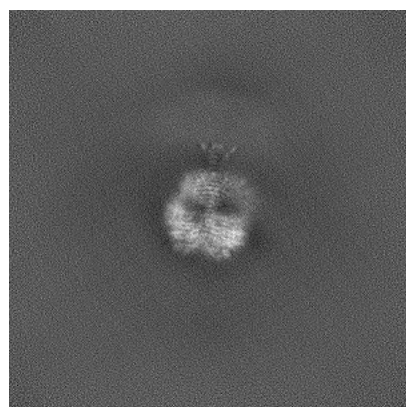


Y

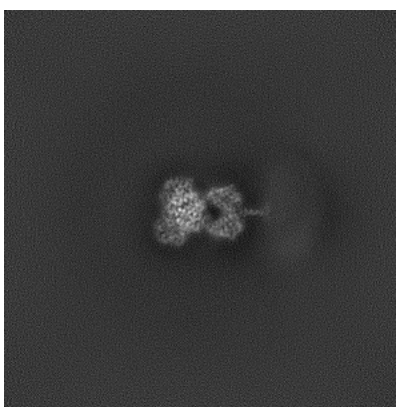


Z

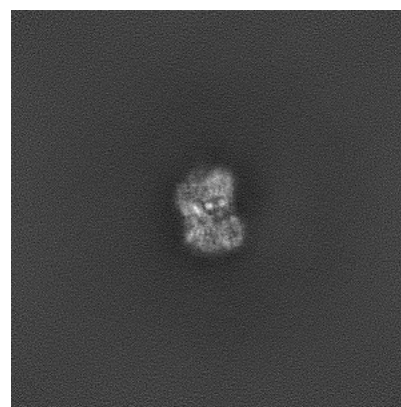
#### 6.1.2 Raw map



X



Y



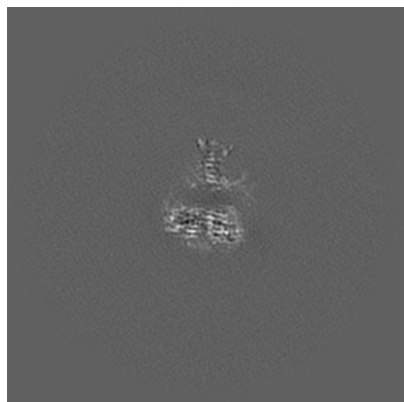
Z

The images above show the map projected in three orthogonal directions.

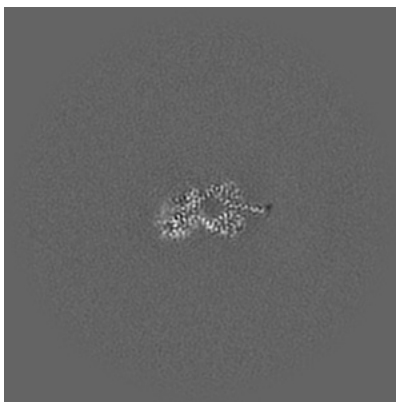


## 6.2 Central slices [i](#)

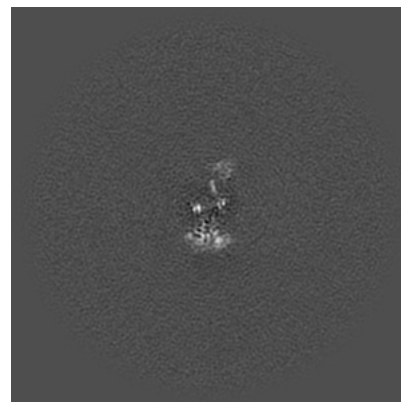
### 6.2.1 Primary map



X Index: 224



Y Index: 224

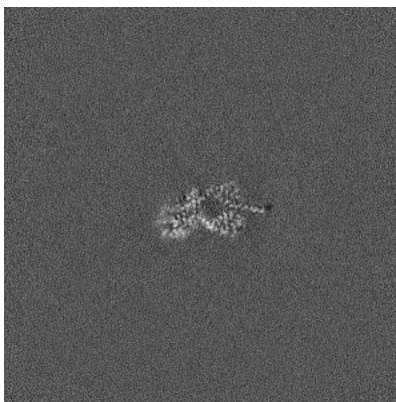


Z Index: 224

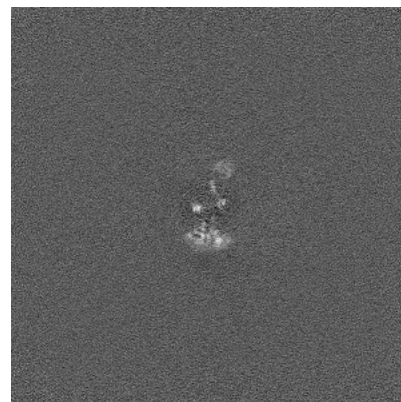
### 6.2.2 Raw map



X Index: 224



Y Index: 224

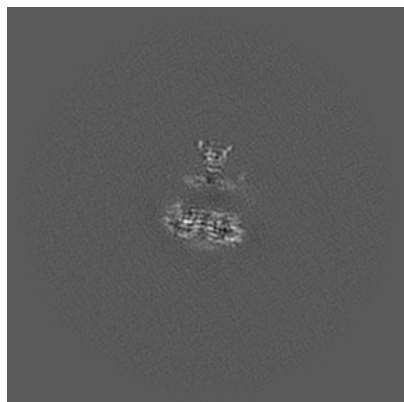


Z Index: 224

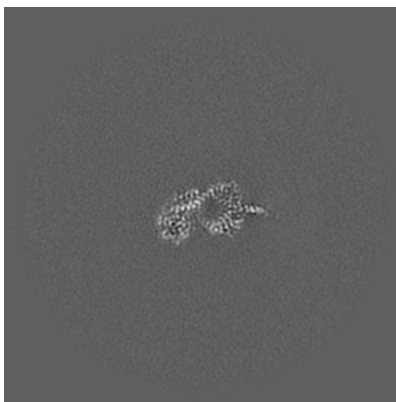
The images above show central slices of the map in three orthogonal directions.

## 6.3 Largest variance slices [i](#)

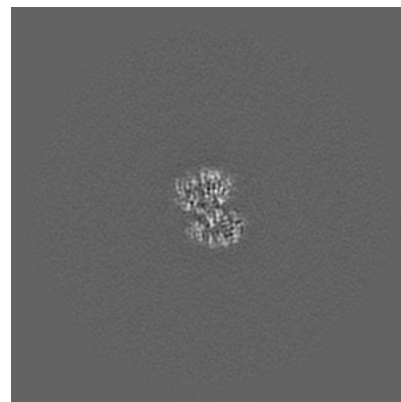
### 6.3.1 Primary map



X Index: 221

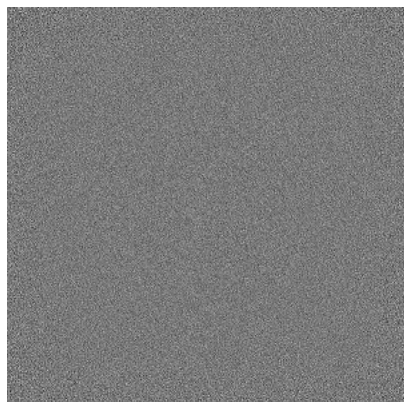


Y Index: 227

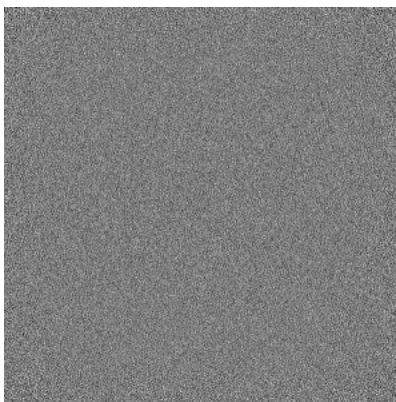


Z Index: 197

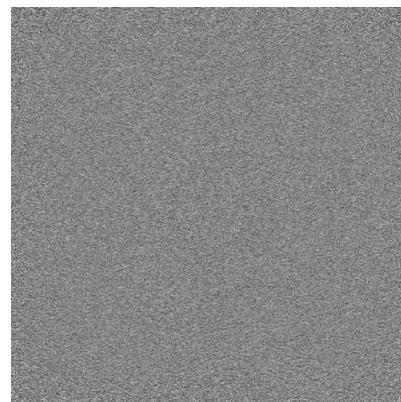
### 6.3.2 Raw map



X Index: 0



Y Index: 0

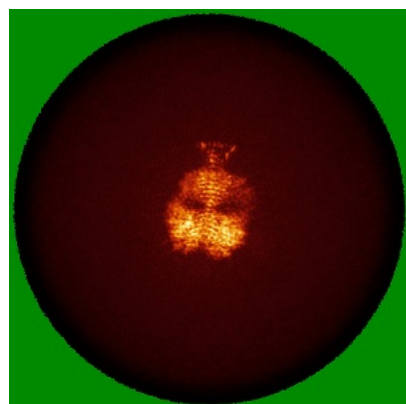


Z Index: 447

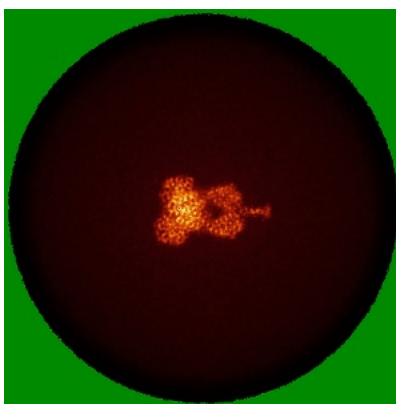
The images above show the largest variance slices of the map in three orthogonal directions.

## 6.4 Orthogonal standard-deviation projections (False-color) [i](#)

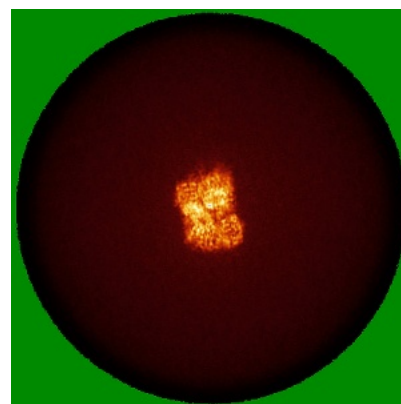
### 6.4.1 Primary map



X



Y

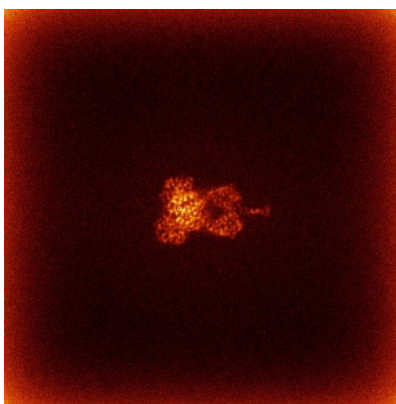


Z

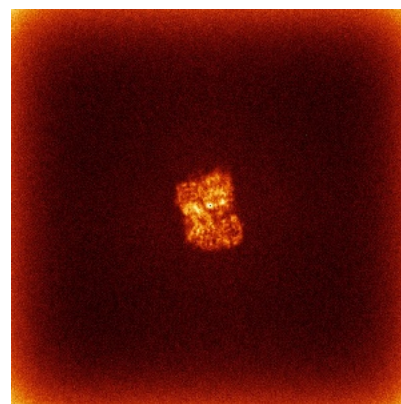
### 6.4.2 Raw map



X



Y

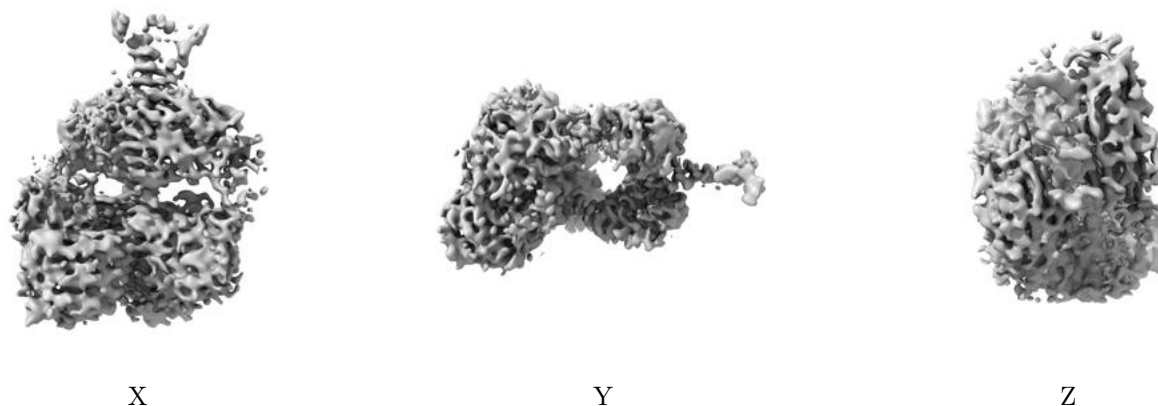


Z

The images above show the map standard deviation projections with false color in three orthogonal directions. Minimum values are shown in green, max in blue, and dark to light orange shades represent small to large values respectively.

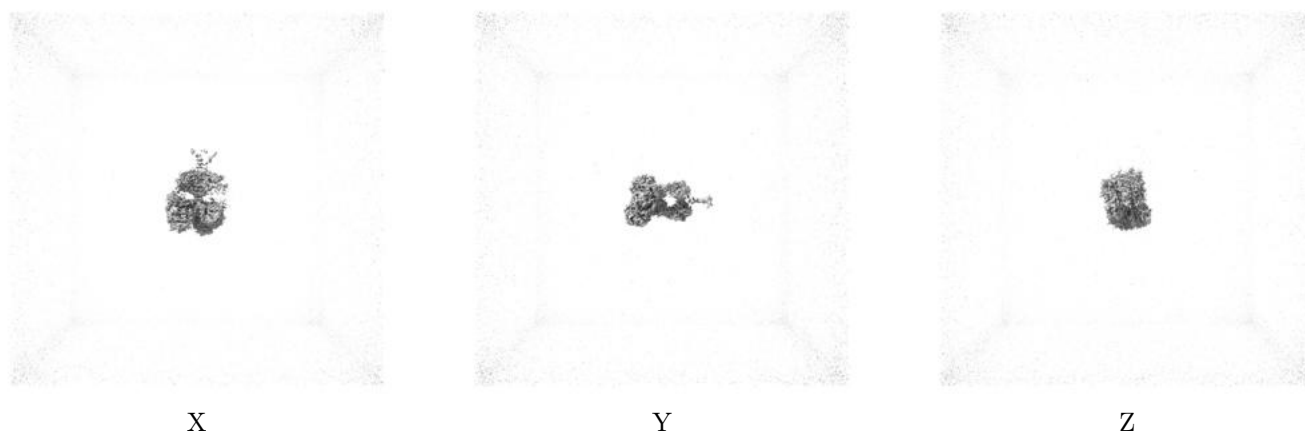
## 6.5 Orthogonal surface views [i](#)

### 6.5.1 Primary map



The images above show the 3D surface view of the map at the recommended contour level 0.13. These images, in conjunction with the slice images, may facilitate assessment of whether an appropriate contour level has been provided.

### 6.5.2 Raw map



These images show the 3D surface of the raw map. The raw map's contour level was selected so that its surface encloses the same volume as the primary map does at its recommended contour level.



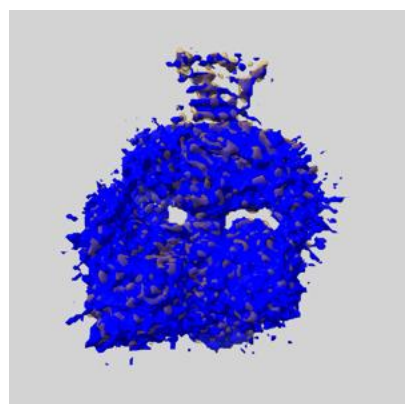
## 6.6 Mask visualisation [i](#)

This section shows the 3D surface view of the primary map at 50% transparency overlaid with the specified mask at 0% transparency

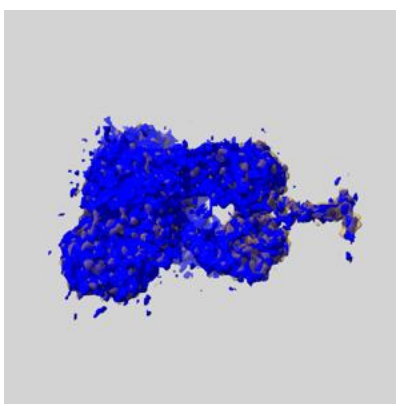
A mask typically either:

- Encompasses the whole structure
- Separates out a domain, a functional unit, a monomer or an area of interest from a larger structure

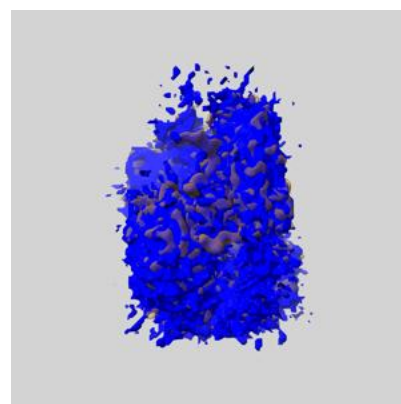
### 6.6.1 emd\_15686\_msk\_1.map [i](#)



X



Y

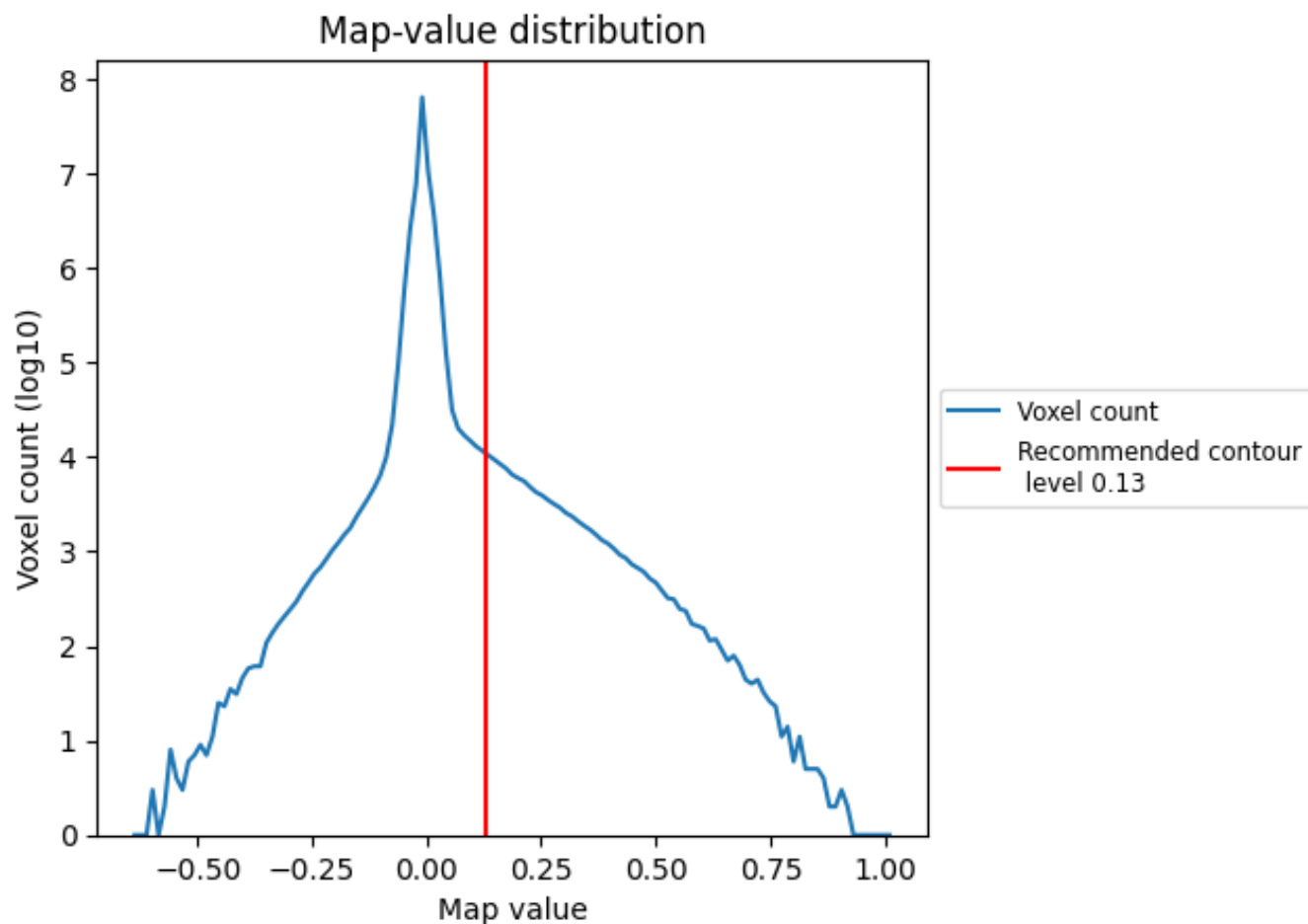


Z

## 7 Map analysis [i](#)

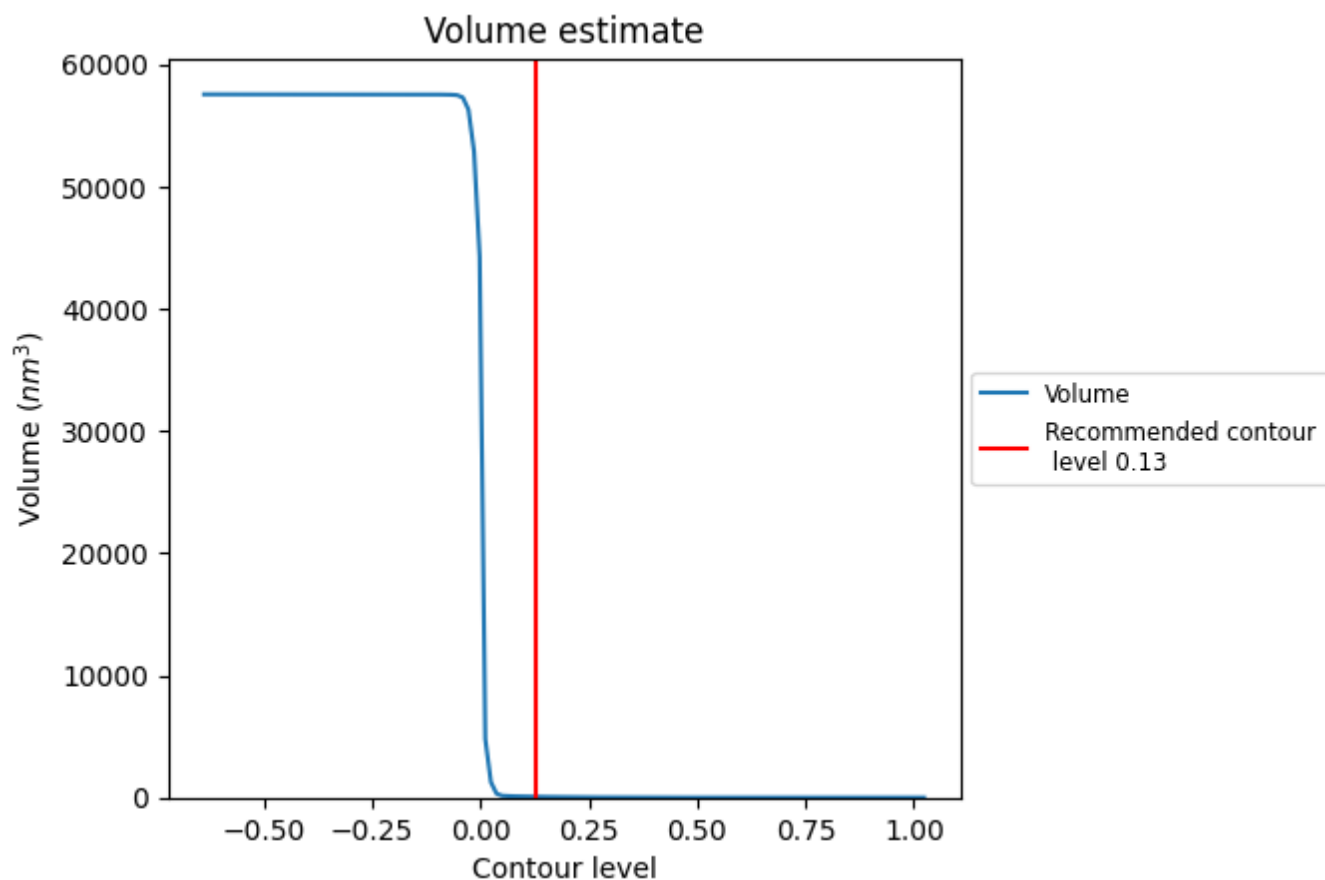
This section contains the results of statistical analysis of the map.

### 7.1 Map-value distribution [i](#)



The map-value distribution is plotted in 128 intervals along the x-axis. The y-axis is logarithmic. A spike in this graph at zero usually indicates that the volume has been masked.

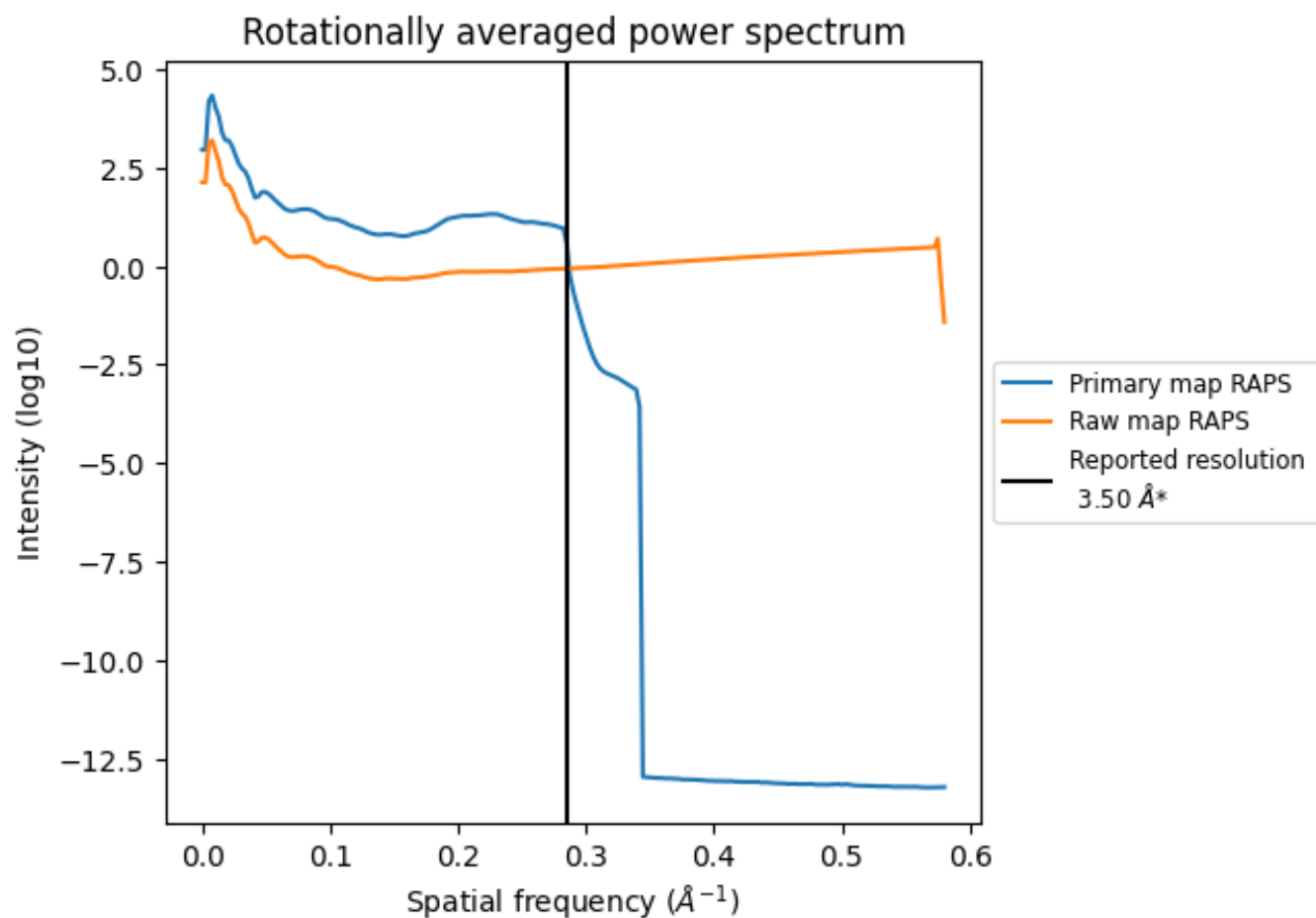
## 7.2 Volume estimate [i](#)



The volume at the recommended contour level is 66 nm<sup>3</sup>; this corresponds to an approximate mass of 60 kDa.

The volume estimate graph shows how the enclosed volume varies with the contour level. The recommended contour level is shown as a vertical line and the intersection between the line and the curve gives the volume of the enclosed surface at the given level.

### 7.3 Rotationally averaged power spectrum ⓘ



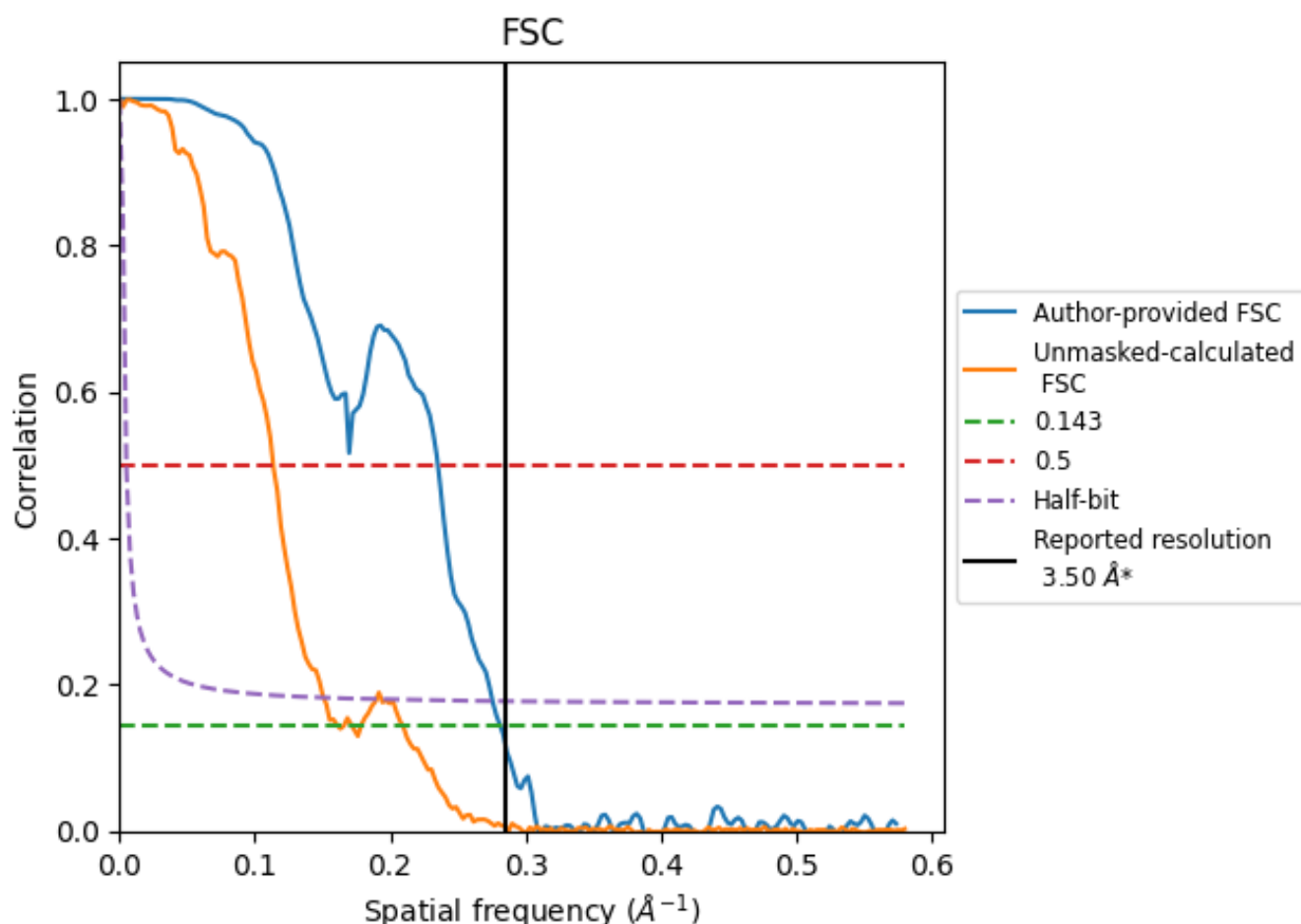
\*Reported resolution corresponds to spatial frequency of 0.286 Å<sup>-1</sup>



## 8 Fourier-Shell correlation [i](#)

Fourier-Shell Correlation (FSC) is the most commonly used method to estimate the resolution of single-particle and subtomogram-averaged maps. The shape of the curve depends on the imposed symmetry, mask and whether or not the two 3D reconstructions used were processed from a common reference. The reported resolution is shown as a black line. A curve is displayed for the half-bit criterion in addition to lines showing the 0.143 gold standard cut-off and 0.5 cut-off.

### 8.1 FSC [i](#)



\*Reported resolution corresponds to spatial frequency of 0.286  $\text{\AA}^{-1}$

## 8.2 Resolution estimates [i](#)

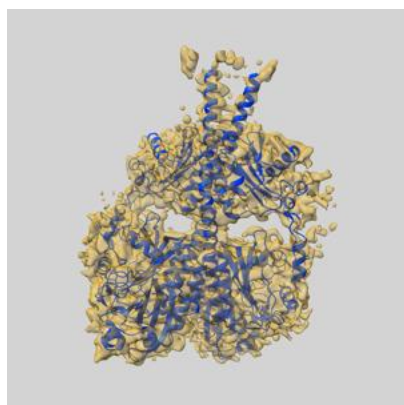
Resolution estimate (Å)	Estimation criterion (FSC cut-off)		
	0.143	0.5	Half-bit
Reported by author	3.50	-	-
Author-provided FSC curve	3.55	4.25	3.63
Unmasked-calculated*	6.20	8.80	6.63

\*Resolution estimate based on FSC curve calculated by comparison of deposited half-maps. The value from deposited half-maps intersecting FSC 0.143 CUT-OFF 6.20 differs from the reported value 3.5 by more than 10 %

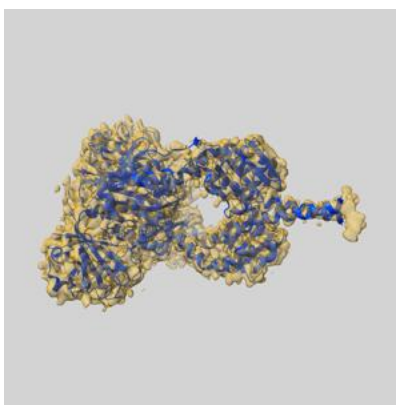
## 9 Map-model fit [i](#)

This section contains information regarding the fit between EMDB map EMD-15686 and PDB model 8AVX. Per-residue inclusion information can be found in [section 3](#) on [page 6](#).

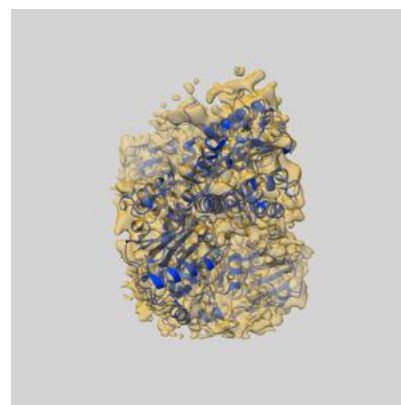
### 9.1 Map-model overlay [i](#)



X



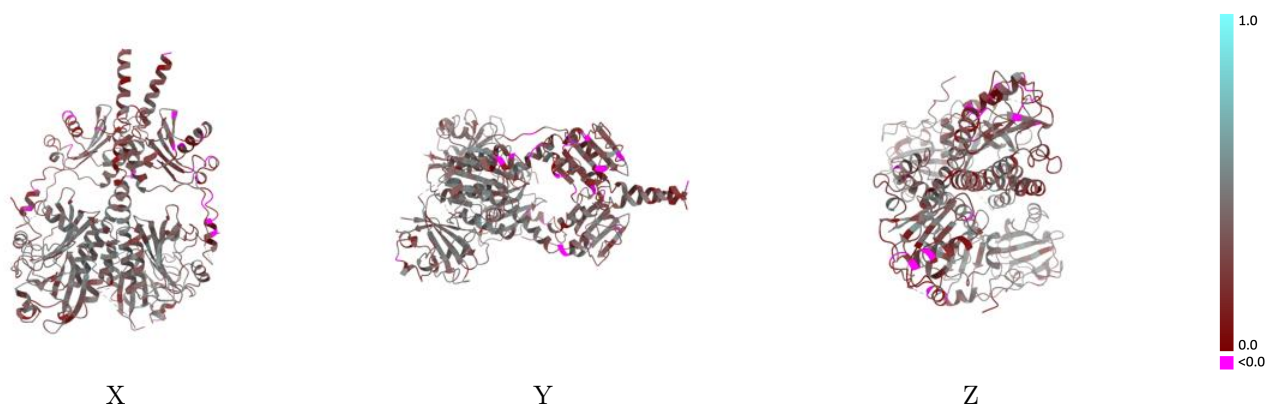
Y



Z

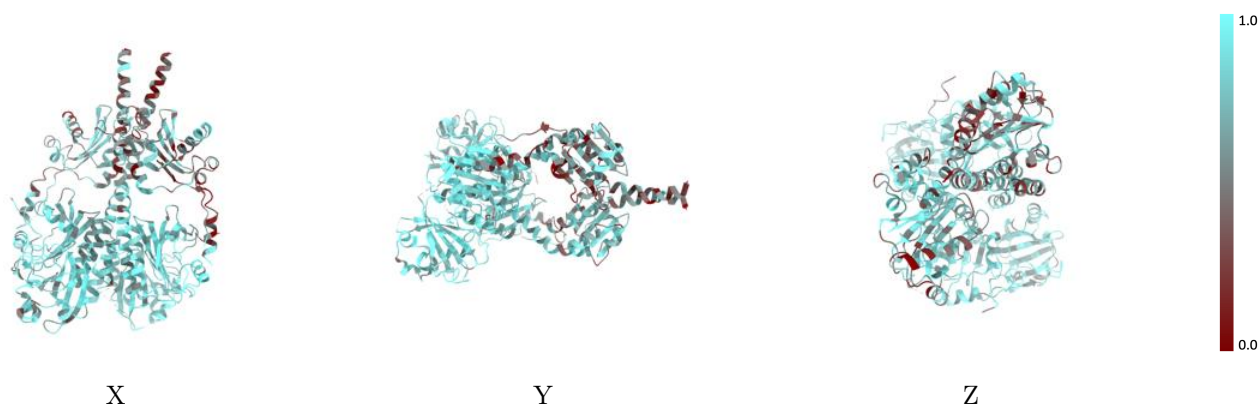
The images above show the 3D surface view of the map at the recommended contour level 0.13 at 50% transparency in yellow overlaid with a ribbon representation of the model coloured in blue. These images allow for the visual assessment of the quality of fit between the atomic model and the map.

## 9.2 Q-score mapped to coordinate model [i](#)



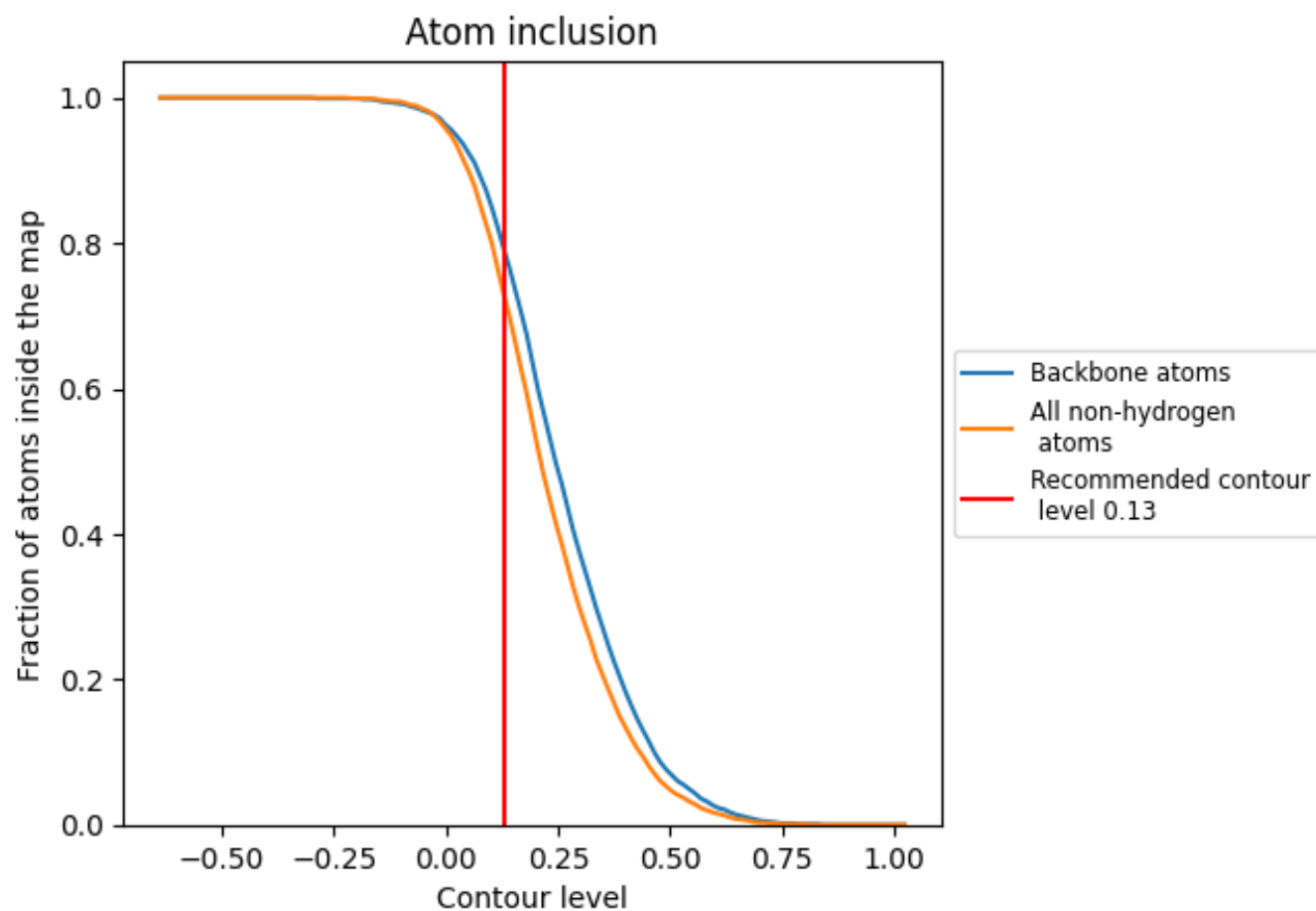
The images above show the model with each residue coloured according to its Q-score. This shows their resolvability in the map with higher Q-score values reflecting better resolvability. Please note: Q-score is calculating the resolvability of atoms, and thus high values are only expected at resolutions at which atoms can be resolved. Low Q-score values may therefore be expected for many entries.

## 9.3 Atom inclusion mapped to coordinate model [i](#)



The images above show the model with each residue coloured according to its atom inclusion. This shows to what extent they are inside the map at the recommended contour level (0.13).

## 9.4 Atom inclusion [i](#)



At the recommended contour level, 79% of all backbone atoms, 73% of all non-hydrogen atoms, are inside the map.

9.5 Map-model fit summary ⓘ

The table lists the average atom inclusion at the recommended contour level (0.13) and Q-score for the entire model and for each chain.

Chain	Atom inclusion	Q-score
All	<div></div> 0.7270	<div></div> 0.3530
A	<div></div> 0.7160	<div></div> 0.3430
B	<div></div> 0.7390	<div></div> 0.3620

