



# Full wwPDB X-ray Structure Validation Report ⓘ

Apr 21, 2024 – 08:40 pm BST

PDB ID : 1OL7  
Title : Structure of Human Aurora-A 122-403 phosphorylated on Thr287, Thr288  
Authors : Bayliss, R.; Conti, E.  
Deposited on : 2003-08-06  
Resolution : 2.75 Å(reported)

This is a Full wwPDB X-ray Structure Validation Report for a publicly released PDB entry.

We welcome your comments at [validation@mail.wwpdb.org](mailto:validation@mail.wwpdb.org)

A user guide is available at

<https://www.wwpdb.org/validation/2017/XrayValidationReportHelp>

with specific help available everywhere you see the ⓘ symbol.

The types of validation reports are described at

<http://www.wwpdb.org/validation/2017/FAQs#types>.

---

The following versions of software and data (see [references ⓘ](#)) were used in the production of this report:

MolProbity : 4.02b-467  
Mogul : 1.8.4, CSD as541be (2020)  
Xtriage (Phenix) : 1.13  
EDS : 2.36.2  
buster-report : 1.1.7 (2018)  
Percentile statistics : 20191225.v01 (using entries in the PDB archive December 25th 2019)  
Refmac : 5.8.0158  
CCP4 : 7.0.044 (Gargrove)  
Ideal geometry (proteins) : Engh & Huber (2001)  
Ideal geometry (DNA, RNA) : Parkinson et al. (1996)  
Validation Pipeline (wwPDB-VP) : 2.36.2

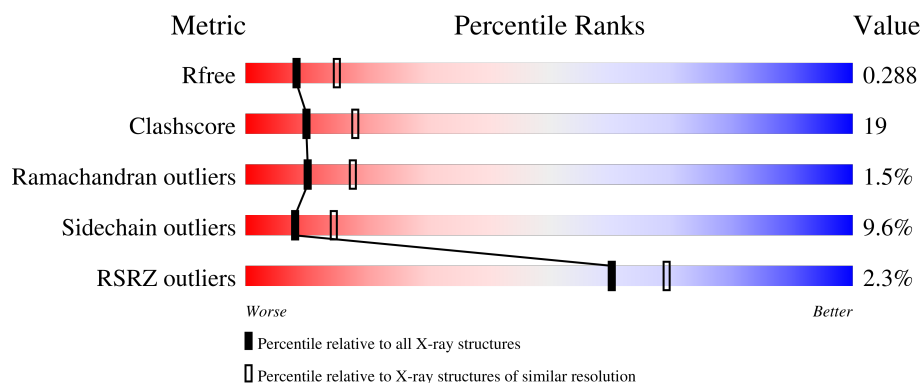
# 1 Overall quality at a glance

The following experimental techniques were used to determine the structure:

*X-RAY DIFFRACTION*

The reported resolution of this entry is 2.75 Å.

Percentile scores (ranging between 0-100) for global validation metrics of the entry are shown in the following graphic. The table shows the number of entries on which the scores are based.



Metric	Whole archive (#Entries)	Similar resolution (#Entries, resolution range(Å))
$R_{free}$	130704	1235 (2.78-2.74)
Clashscore	141614	1277 (2.78-2.74)
Ramachandran outliers	138981	1257 (2.78-2.74)
Sidechain outliers	138945	1257 (2.78-2.74)
RSRZ outliers	127900	1207 (2.78-2.74)

The table below summarises the geometric issues observed across the polymeric chains and their fit to the electron density. The red, orange, yellow and green segments of the lower bar indicate the fraction of residues that contain outliers for  $\geq 3$ , 2, 1 and 0 types of geometric quality criteria respectively. A grey segment represents the fraction of residues that are not modelled. The numeric value for each fraction is indicated below the corresponding segment, with a dot representing fractions  $\leq 5\%$ . The upper red bar (where present) indicates the fraction of residues that have poor fit to the electron density. The numeric value is given above the bar.

Mol	Chain	Length	Quality of chain
1	A	282	<div> <div>2%</div> <div>56%</div> <div>33%</div> <div>6%</div> </div>

The following table lists non-polymeric compounds, carbohydrate monomers and non-standard residues in protein, DNA, RNA chains that are outliers for geometric or electron-density-fit criteria:

Mol	Type	Chain	Res	Chirality	Geometry	Clashes	Electron density
1	TPO	A	287	-	X	-	-

*Continued on next page...*

*Continued from previous page...*

Mol	Type	Chain	Res	Chirality	Geometry	Clashes	Electron density
1	TPO	A	288	-	X	-	-

## 2 Entry composition [i](#)

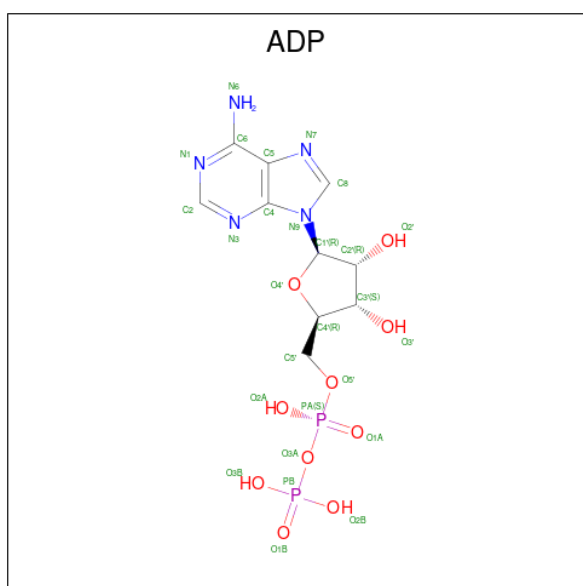
There are 4 unique types of molecules in this entry. The entry contains 2155 atoms, of which 0 are hydrogens and 0 are deuteriums.

In the tables below, the ZeroOcc column contains the number of atoms modelled with zero occupancy, the AltConf column contains the number of residues with at least one atom in alternate conformation and the Trace column contains the number of residues modelled with at most 2 atoms.

- Molecule 1 is a protein called SERINE/THREONINE KINASE 6.

Mol	Chain	Residues	Atoms						ZeroOcc	AltConf	Trace
1	A	264	Total	C	N	O	P	S	0	0	1
			2117	1356	368	387	2	4			

- Molecule 2 is ADENOSINE-5'-DIPHOSPHATE (three-letter code: ADP) (formula:  $C_{10}H_{15}N_5O_{10}P_2$ ).



Mol	Chain	Residues	Atoms					ZeroOcc	AltConf
2	A	1	Total	C	N	O	P	0	0
			27	10	5	10	2		

- Molecule 3 is MAGNESIUM ION (three-letter code: MG) (formula: Mg).

Mol	Chain	Residues	Atoms		ZeroOcc	AltConf
3	A	2	Total	Mg	0	0
			2	2		

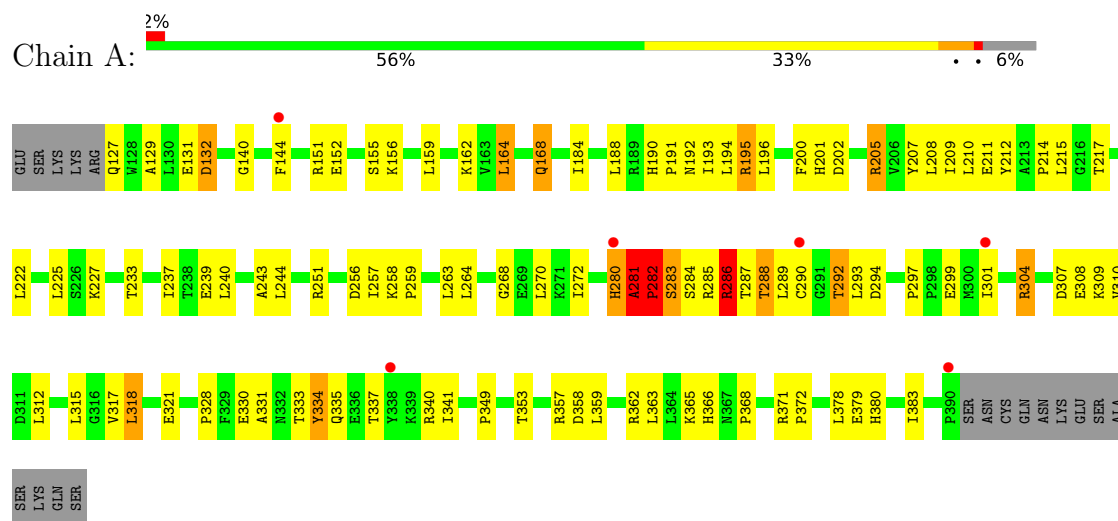
- Molecule 4 is water.

Mol	Chain	Residues	Atoms		ZeroOcc	AltConf
4	A	9	Total	O	0	0
			9	9		

### 3 Residue-property plots [i](#)

These plots are drawn for all protein, RNA, DNA and oligosaccharide chains in the entry. The first graphic for a chain summarises the proportions of the various outlier classes displayed in the second graphic. The second graphic shows the sequence view annotated by issues in geometry and electron density. Residues are color-coded according to the number of geometric quality criteria for which they contain at least one outlier: green = 0, yellow = 1, orange = 2 and red = 3 or more. A red dot above a residue indicates a poor fit to the electron density ( $RSRZ > 2$ ). Stretches of 2 or more consecutive residues without any outlier are shown as a green connector. Residues present in the sample, but not in the model, are shown in grey.

#### • Molecule 1: SERINE/THREONINE KINASE 6



## 4 Data and refinement statistics

Property	Value	Source
Space group	P 61 2 2	Depositor
Cell constants a, b, c, $\alpha$ , $\beta$ , $\gamma$	81.18Å 81.18Å 169.62Å 90.00° 90.00° 120.00°	Depositor
Resolution (Å)	20.00 – 2.75 70.30 – 2.75	Depositor EDS
% Data completeness (in resolution range)	100.0 (20.00-2.75) 100.0 (70.30-2.75)	Depositor EDS
$R_{merge}$	0.12	Depositor
$R_{sym}$	(Not available)	Depositor
$\langle I/\sigma(I) \rangle$ <sup>1</sup>	3.97 (at 2.73Å)	Xtriage
Refinement program	CNS 1.1	Depositor
R, $R_{free}$	0.257 , 0.296 0.250 , 0.288	Depositor DCC
$R_{free}$ test set	440 reflections (4.79%)	wwPDB-VP
Wilson B-factor (Å <sup>2</sup> )	61.6	Xtriage
Anisotropy	0.139	Xtriage
Bulk solvent $k_{sol}$ (e/Å <sup>3</sup> ), $B_{sol}$ (Å <sup>2</sup> )	0.36 , 52.0	EDS
L-test for twinning <sup>2</sup>	$\langle  L  \rangle = 0.48$ , $\langle L^2 \rangle = 0.31$	Xtriage
Estimated twinning fraction	No twinning to report.	Xtriage
$F_o, F_c$ correlation	0.92	EDS
Total number of atoms	2155	wwPDB-VP
Average B, all atoms (Å <sup>2</sup> )	54.0	wwPDB-VP

Xtriage's analysis on translational NCS is as follows: *The largest off-origin peak in the Patterson function is 4.20% of the height of the origin peak. No significant pseudotranslation is detected.*

<sup>1</sup>Intensities estimated from amplitudes.

<sup>2</sup>Theoretical values of  $\langle |L| \rangle$ ,  $\langle L^2 \rangle$  for acentric reflections are 0.5, 0.333 respectively for untwinned datasets, and 0.375, 0.2 for perfectly twinned datasets.

## 5 Model quality

### 5.1 Standard geometry

Bond lengths and bond angles in the following residue types are not validated in this section: ADP, TPO, MG

The Z score for a bond length (or angle) is the number of standard deviations the observed value is removed from the expected value. A bond length (or angle) with  $|Z| > 5$  is considered an outlier worth inspection. RMSZ is the root-mean-square of all Z scores of the bond lengths (or angles).

Mol	Chain	Bond lengths		Bond angles	
		RMSZ	$\# Z  > 5$	RMSZ	$\# Z  > 5$
1	A	0.85	2/2148 (0.1%)	0.94	7/2913 (0.2%)

All (2) bond length outliers are listed below:

Mol	Chain	Res	Type	Atoms	Z	Observed(Å)	Ideal(Å)
1	A	282	PRO	CG-CD	6.65	1.72	1.50
1	A	286	ARG	C-O	6.38	1.35	1.23

All (7) bond angle outliers are listed below:

Mol	Chain	Res	Type	Atoms	Z	Observed(°)	Ideal(°)
1	A	281	ALA	C-N-CD	-17.33	82.47	120.60
1	A	290	CYS	N-CA-C	-9.50	85.36	111.00
1	A	282	PRO	N-CA-C	-8.21	90.74	112.10
1	A	281	ALA	C-N-CA	6.71	150.20	122.00
1	A	292	THR	N-CA-C	-6.43	93.63	111.00
1	A	282	PRO	CA-N-CD	-5.39	103.96	111.50
1	A	281	ALA	N-CA-C	5.03	124.58	111.00

There are no chirality outliers.

There are no planarity outliers.

### 5.2 Too-close contacts

In the following table, the Non-H and H(model) columns list the number of non-hydrogen atoms and hydrogen atoms in the chain respectively. The H(added) column lists the number of hydrogen atoms added and optimized by MolProbity. The Clashes column lists the number of clashes within the asymmetric unit, whereas Symm-Clashes lists symmetry-related clashes.



Mol	Chain	Non-H	H(model)	H(added)	Clashes	Symm-Clashes
1	A	2117	0	2055	80	0
2	A	27	0	12	1	0
3	A	2	0	0	0	0
4	A	9	0	0	0	0
All	All	2155	0	2067	80	0

The all-atom clashscore is defined as the number of clashes found per 1000 atoms (including hydrogen atoms). The all-atom clashscore for this structure is 19.

All (80) close contacts within the same asymmetric unit are listed below, sorted by their clash magnitude.

Atom-1	Atom-2	Interatomic distance (Å)	Clash overlap (Å)
1:A:334:TYR:O	1:A:334:TYR:CD2	2.21	0.94
1:A:366:HIS:O	1:A:366:HIS:ND1	2.09	0.86
1:A:292:THR:O	1:A:292:THR:HG23	1.79	0.82
1:A:196:LEU:CD1	1:A:210:LEU:HD23	2.13	0.79
1:A:288:TPO:HG23	1:A:289:LEU:H	1.46	0.79
1:A:301:ILE:HD12	1:A:341:ILE:HG21	1.70	0.73
1:A:196:LEU:HD12	1:A:210:LEU:HD23	1.73	0.70
1:A:317:VAL:HG13	1:A:328:PRO:HD2	1.73	0.70
1:A:280:HIS:O	1:A:281:ALA:HB2	1.91	0.68
1:A:292:THR:O	1:A:292:THR:CG2	2.41	0.68
1:A:155:SER:O	1:A:156:LYS:HB2	1.95	0.66
1:A:297:PRO:HG3	1:A:310:VAL:HB	1.77	0.65
1:A:188:LEU:HD23	1:A:193:ILE:HG21	1.80	0.64
1:A:309:LYS:HD3	1:A:312:LEU:HD12	1.81	0.62
1:A:196:LEU:HD13	1:A:210:LEU:HD23	1.80	0.62
1:A:301:ILE:CD1	1:A:341:ILE:HG21	2.29	0.62
1:A:129:ALA:O	1:A:132:ASP:HB2	2.01	0.61
1:A:259:PRO:HD3	1:A:318:LEU:HD11	1.81	0.61
1:A:307:ASP:O	1:A:310:VAL:HG13	2.01	0.60
1:A:217:THR:HG22	1:A:263:LEU:HD23	1.82	0.59
1:A:200:PHE:O	1:A:201:HIS:HB3	2.01	0.59
1:A:196:LEU:HD13	1:A:210:LEU:CD2	2.32	0.59
1:A:299:GLU:HA	1:A:304:ARG:HE	1.67	0.59
1:A:164:LEU:O	1:A:205:ARG:HB2	2.02	0.59
1:A:286:ARG:N	1:A:286:ARG:HD2	2.16	0.58
1:A:190:HIS:ND1	1:A:191:PRO:HD2	2.18	0.58
1:A:215:LEU:HD12	1:A:268:GLY:HA2	1.86	0.58
1:A:194:LEU:HD11	1:A:211:GLU:O	2.03	0.58
1:A:192:ASN:HB2	1:A:243:ALA:HB2	1.86	0.58
1:A:307:ASP:OD1	1:A:309:LYS:HB2	2.04	0.58

*Continued on next page...*

*Continued from previous page...*

Atom-1	Atom-2	Interatomic distance (Å)	Clash overlap (Å)
1:A:283:SER:OG	1:A:284:SER:O	2.23	0.56
1:A:217:THR:HG22	1:A:263:LEU:CD2	2.36	0.55
1:A:244:LEU:HD21	1:A:257:ILE:HD11	1.89	0.55
1:A:184:ILE:O	1:A:188:LEU:HD13	2.06	0.55
1:A:162:LYS:HB3	1:A:208:LEU:HB2	1.88	0.54
1:A:299:GLU:HA	1:A:304:ARG:HH21	1.75	0.52
1:A:353:THR:O	1:A:357:ARG:HG3	2.10	0.52
1:A:144:PHE:O	1:A:164:LEU:HA	2.09	0.52
1:A:283:SER:OG	1:A:284:SER:N	2.41	0.52
1:A:129:ALA:HB1	1:A:131:GLU:OE1	2.10	0.51
1:A:285:ARG:C	1:A:286:ARG:HD2	2.30	0.51
1:A:288:TPO:HG23	1:A:289:LEU:N	2.21	0.51
1:A:288:TPO:CG2	1:A:289:LEU:H	2.18	0.51
1:A:334:TYR:CD2	1:A:334:TYR:C	2.83	0.50
1:A:286:ARG:N	1:A:286:ARG:CD	2.70	0.49
1:A:140:GLY:HA3	2:A:531:ADP:HI'	1.95	0.49
1:A:196:LEU:CD1	1:A:210:LEU:CD2	2.85	0.49
1:A:225:LEU:O	1:A:227:LYS:N	2.43	0.49
1:A:359:LEU:HD22	1:A:383:ILE:HG12	1.94	0.48
1:A:240:LEU:HD13	1:A:270:LEU:CD2	2.44	0.48
1:A:358:ASP:O	1:A:362:ARG:HG3	2.14	0.48
1:A:334:TYR:O	1:A:334:TYR:HD2	1.88	0.47
1:A:363:LEU:O	1:A:371:ARG:HG2	2.15	0.47
1:A:240:LEU:HD13	1:A:270:LEU:HD21	1.96	0.47
1:A:151:ARG:HG2	1:A:156:LYS:HA	1.97	0.46
1:A:215:LEU:HB2	1:A:264:LEU:HB2	1.98	0.45
1:A:222:LEU:HD21	1:A:321:GLU:HG2	1.98	0.45
1:A:164:LEU:O	1:A:205:ARG:CB	2.65	0.44
1:A:192:ASN:ND2	1:A:239:GLU:HB3	2.32	0.44
1:A:233:THR:O	1:A:237:ILE:HG12	2.18	0.44
1:A:365:LYS:HB2	1:A:371:ARG:HG3	1.98	0.44
1:A:283:SER:HG	1:A:284:SER:N	2.16	0.44
1:A:288:TPO:CG2	1:A:289:LEU:N	2.81	0.44
1:A:195:ARG:HE	1:A:195:ARG:HB3	1.37	0.43
1:A:379:GLU:O	1:A:380:HIS:C	2.55	0.43
1:A:292:THR:O	1:A:293:LEU:C	2.56	0.43
1:A:200:PHE:HD2	1:A:209:ILE:HD11	1.84	0.43
1:A:240:LEU:HD12	1:A:272:ILE:HD11	2.01	0.43
1:A:334:TYR:O	1:A:334:TYR:CG	2.69	0.43
1:A:366:HIS:O	1:A:366:HIS:CG	2.70	0.43
1:A:330:GLU:O	1:A:340:ARG:NH1	2.53	0.42

*Continued on next page...*

*Continued from previous page...*

Atom-1	Atom-2	Interatomic distance (Å)	Clash overlap (Å)
1:A:240:LEU:HD23	1:A:315:LEU:CD1	2.50	0.42
1:A:190:HIS:HB3	1:A:193:ILE:HD12	2.01	0.41
1:A:256:ASP:OD1	1:A:258:LYS:HE2	2.21	0.41
1:A:144:PHE:HA	1:A:168:GLN:NE2	2.36	0.41
1:A:200:PHE:CD2	1:A:209:ILE:HD11	2.56	0.41
1:A:331:ALA:HB3	1:A:337:THR:OG1	2.21	0.41
1:A:202:ASP:OD2	1:A:207:TYR:OH	2.30	0.41
1:A:312:LEU:HD13	1:A:372:PRO:O	2.21	0.41
1:A:212:TYR:O	1:A:214:PRO:HD3	2.21	0.40

There are no symmetry-related clashes.

## 5.3 Torsion angles [i](#)

### 5.3.1 Protein backbone [i](#)

In the following table, the Percentiles column shows the percent Ramachandran outliers of the chain as a percentile score with respect to all X-ray entries followed by that with respect to entries of similar resolution.

The Analysed column shows the number of residues for which the backbone conformation was analysed, and the total number of residues.

Mol	Chain	Analysed	Favoured	Allowed	Outliers	Percentiles
1	A	260/282 (92%)	240 (92%)	16 (6%)	4 (2%)	10 18

All (4) Ramachandran outliers are listed below:

Mol	Chain	Res	Type
1	A	282	PRO
1	A	304	ARG
1	A	281	ALA
1	A	294	ASP

### 5.3.2 Protein sidechains [i](#)

In the following table, the Percentiles column shows the percent sidechain outliers of the chain as a percentile score with respect to all X-ray entries followed by that with respect to entries of similar resolution.

The Analysed column shows the number of residues for which the sidechain conformation was

analysed, and the total number of residues.

Mol	Chain	Analysed	Rotameric	Outliers	Percentiles
1	A	218/248 (88%)	197 (90%)	21 (10%)	8 14

All (21) residues with a non-rotameric sidechain are listed below:

Mol	Chain	Res	Type
1	A	127	GLN
1	A	132	ASP
1	A	152	GLU
1	A	159	LEU
1	A	164	LEU
1	A	168	GLN
1	A	195	ARG
1	A	205	ARG
1	A	251	ARG
1	A	280	HIS
1	A	282	PRO
1	A	283	SER
1	A	286	ARG
1	A	308	GLU
1	A	318	LEU
1	A	333	THR
1	A	334	TYR
1	A	335	GLN
1	A	349	PRO
1	A	368	PRO
1	A	378	LEU

Sometimes sidechains can be flipped to improve hydrogen bonding and reduce clashes. All (4) such sidechains are listed below:

Mol	Chain	Res	Type
1	A	127	GLN
1	A	177	GLN
1	A	242	ASN
1	A	335	GLN

### 5.3.3 RNA ⓘ

There are no RNA molecules in this entry.

## 5.4 Non-standard residues in protein, DNA, RNA chains ⓘ

2 non-standard protein/DNA/RNA residues are modelled in this entry.

In the following table, the Counts columns list the number of bonds (or angles) for which Mogul statistics could be retrieved, the number of bonds (or angles) that are observed in the model and the number of bonds (or angles) that are defined in the Chemical Component Dictionary. The Link column lists molecule types, if any, to which the group is linked. The Z score for a bond length (or angle) is the number of standard deviations the observed value is removed from the expected value. A bond length (or angle) with  $|Z| > 2$  is considered an outlier worth inspection. RMSZ is the root-mean-square of all Z scores of the bond lengths (or angles).

Mol	Type	Chain	Res	Link	Bond lengths			Bond angles		
					Counts	RMSZ	# Z  > 2	Counts	RMSZ	# Z  > 2
1	TPO	A	287	1	8,10,11	3.94	6 (75%)	10,14,16	2.42	4 (40%)
1	TPO	A	288	1	8,10,11	4.22	7 (87%)	10,14,16	2.52	4 (40%)

In the following table, the Chirals column lists the number of chiral outliers, the number of chiral centers analysed, the number of these observed in the model and the number defined in the Chemical Component Dictionary. Similar counts are reported in the Torsion and Rings columns. '-' means no outliers of that kind were identified.

Mol	Type	Chain	Res	Link	Chirals	Torsions	Rings
1	TPO	A	287	1	-	4/9/11/13	-
1	TPO	A	288	1	-	4/9/11/13	-

All (13) bond length outliers are listed below:

Mol	Chain	Res	Type	Atoms	Z	Observed(Å)	Ideal(Å)
1	A	288	TPO	P-OG1	8.20	1.74	1.59
1	A	287	TPO	P-OG1	7.22	1.72	1.59
1	A	287	TPO	P-O1P	4.69	1.65	1.50
1	A	288	TPO	P-O1P	4.57	1.65	1.50
1	A	287	TPO	P-O2P	4.13	1.70	1.54
1	A	287	TPO	CG2-CB	3.96	1.61	1.51
1	A	288	TPO	O-C	3.85	1.35	1.19
1	A	288	TPO	P-O2P	3.74	1.69	1.54
1	A	288	TPO	CG2-CB	3.26	1.59	1.51
1	A	287	TPO	P-O3P	2.82	1.65	1.54
1	A	288	TPO	P-O3P	2.76	1.65	1.54
1	A	287	TPO	O-C	2.42	1.29	1.19
1	A	288	TPO	CA-N	-2.20	1.40	1.47

All (8) bond angle outliers are listed below:

Mol	Chain	Res	Type	Atoms	Z	Observed(°)	Ideal(°)
1	A	287	TPO	O3P-P-O2P	5.57	128.93	107.64
1	A	288	TPO	O3P-P-O2P	5.26	127.75	107.64
1	A	288	TPO	CG2-CB-CA	4.65	122.35	113.16
1	A	287	TPO	CG2-CB-CA	3.32	119.72	113.16
1	A	287	TPO	O3P-P-O1P	-2.54	100.72	110.68
1	A	288	TPO	P-OG1-CB	2.32	130.22	123.21
1	A	288	TPO	O3P-P-O1P	-2.20	102.06	110.68
1	A	287	TPO	P-OG1-CB	2.02	129.32	123.21

There are no chirality outliers.

All (8) torsion outliers are listed below:

Mol	Chain	Res	Type	Atoms
1	A	287	TPO	N-CA-CB-OG1
1	A	287	TPO	O-C-CA-CB
1	A	288	TPO	N-CA-CB-OG1
1	A	288	TPO	CG2-CB-OG1-P
1	A	287	TPO	CG2-CB-OG1-P
1	A	288	TPO	CA-CB-OG1-P
1	A	287	TPO	CB-OG1-P-O1P
1	A	288	TPO	CB-OG1-P-O1P

There are no ring outliers.

1 monomer is involved in 4 short contacts:

Mol	Chain	Res	Type	Clashes	Symm-Clashes
1	A	288	TPO	4	0

## 5.5 Carbohydrates [i](#)

There are no monosaccharides in this entry.

## 5.6 Ligand geometry [i](#)

Of 3 ligands modelled in this entry, 2 are monoatomic - leaving 1 for Mogul analysis.

In the following table, the Counts columns list the number of bonds (or angles) for which Mogul statistics could be retrieved, the number of bonds (or angles) that are observed in the model and the number of bonds (or angles) that are defined in the Chemical Component Dictionary. The Link column lists molecule types, if any, to which the group is linked. The Z score for a bond length (or angle) is the number of standard deviations the observed value is removed from the

expected value. A bond length (or angle) with  $|Z| > 2$  is considered an outlier worth inspection. RMSZ is the root-mean-square of all Z scores of the bond lengths (or angles).

Mol	Type	Chain	Res	Link	Bond lengths			Bond angles		
					Counts	RMSZ	$\# Z  > 2$	Counts	RMSZ	$\# Z  > 2$
2	ADP	A	531	3	24,29,29	1.31	2 (8%)	29,45,45	1.48	5 (17%)

In the following table, the Chirals column lists the number of chiral outliers, the number of chiral centers analysed, the number of these observed in the model and the number defined in the Chemical Component Dictionary. Similar counts are reported in the Torsion and Rings columns. '-' means no outliers of that kind were identified.

Mol	Type	Chain	Res	Link	Chirals	Torsions	Rings
2	ADP	A	531	3	-	6/12/32/32	0/3/3/3

All (2) bond length outliers are listed below:

Mol	Chain	Res	Type	Atoms	Z	Observed(Å)	Ideal(Å)
2	A	531	ADP	C2-N1	3.72	1.40	1.33
2	A	531	ADP	O4'-C1'	2.28	1.44	1.41

All (5) bond angle outliers are listed below:

Mol	Chain	Res	Type	Atoms	Z	Observed(°)	Ideal(°)
2	A	531	ADP	C5-C6-N1	-3.07	113.38	120.35
2	A	531	ADP	N3-C2-N1	-2.99	124.01	128.68
2	A	531	ADP	C5-C6-N6	2.85	124.68	120.35
2	A	531	ADP	C2-N1-C6	2.57	123.16	118.75
2	A	531	ADP	C3'-C2'-C1'	2.07	104.09	100.98

There are no chirality outliers.

All (6) torsion outliers are listed below:

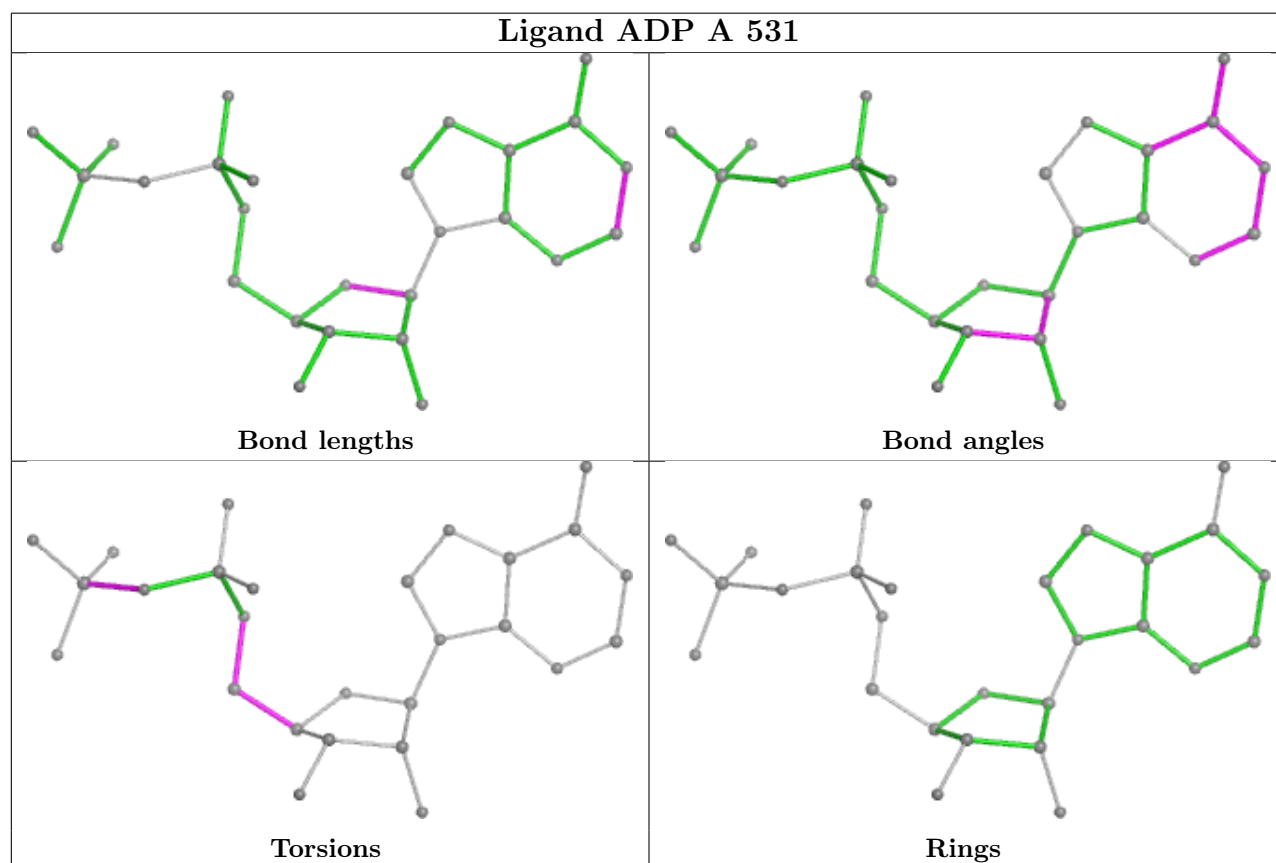
Mol	Chain	Res	Type	Atoms
2	A	531	ADP	O4'-C4'-C5'-O5'
2	A	531	ADP	C3'-C4'-C5'-O5'
2	A	531	ADP	PA-O3A-PB-O1B
2	A	531	ADP	C4'-C5'-O5'-PA
2	A	531	ADP	PA-O3A-PB-O2B
2	A	531	ADP	PA-O3A-PB-O3B

There are no ring outliers.

1 monomer is involved in 1 short contact:

Mol	Chain	Res	Type	Clashes	Symm-Clashes
2	A	531	ADP	1	0

The following is a two-dimensional graphical depiction of Mogul quality analysis of bond lengths, bond angles, torsion angles, and ring geometry for all instances of the Ligand of Interest. In addition, ligands with molecular weight > 250 and outliers as shown on the validation Tables will also be included. For torsion angles, if less than 5% of the Mogul distribution of torsion angles is within 10 degrees of the torsion angle in question, then that torsion angle is considered an outlier. Any bond that is central to one or more torsion angles identified as an outlier by Mogul will be highlighted in the graph. For rings, the root-mean-square deviation (RMSD) between the ring in question and similar rings identified by Mogul is calculated over all ring torsion angles. If the average RMSD is greater than 60 degrees and the minimal RMSD between the ring in question and any Mogul-identified rings is also greater than 60 degrees, then that ring is considered an outlier. The outliers are highlighted in purple. The color gray indicates Mogul did not find sufficient equivalents in the CSD to analyse the geometry.



## 5.7 Other polymers ⓘ

There are no such residues in this entry.



## 5.8 Polymer linkage issues ⓘ

There are no chain breaks in this entry.

## 6 Fit of model and data [i](#)

### 6.1 Protein, DNA and RNA chains [i](#)

In the following table, the column labelled ‘#RSRZ> 2’ contains the number (and percentage) of RSRZ outliers, followed by percent RSRZ outliers for the chain as percentile scores relative to all X-ray entries and entries of similar resolution. The OWAB column contains the minimum, median, 95<sup>th</sup> percentile and maximum values of the occupancy-weighted average B-factor per residue. The column labelled ‘Q< 0.9’ lists the number of (and percentage) of residues with an average occupancy less than 0.9.

Mol	Chain	Analysed	<RSRZ>	#RSRZ>2	OWAB(Å <sup>2</sup> )	Q<0.9
1	A	262/282 (92%)	0.27	6 (2%) 60 69	32, 53, 72, 88	0

All (6) RSRZ outliers are listed below:

Mol	Chain	Res	Type	RSRZ
1	A	390	PRO	3.5
1	A	301	ILE	3.4
1	A	280	HIS	2.4
1	A	338	TYR	2.2
1	A	144	PHE	2.0
1	A	290	CYS	2.0

### 6.2 Non-standard residues in protein, DNA, RNA chains [i](#)

In the following table, the Atoms column lists the number of modelled atoms in the group and the number defined in the chemical component dictionary. The B-factors column lists the minimum, median, 95<sup>th</sup> percentile and maximum values of B factors of atoms in the group. The column labelled ‘Q< 0.9’ lists the number of atoms with occupancy less than 0.9.

Mol	Type	Chain	Res	Atoms	RSCC	RSR	B-factors(Å <sup>2</sup> )	Q<0.9
1	TPO	A	288	11/12	0.80	0.35	82,87,93,95	0
1	TPO	A	287	11/12	0.84	0.39	78,84,103,105	0

### 6.3 Carbohydrates [i](#)

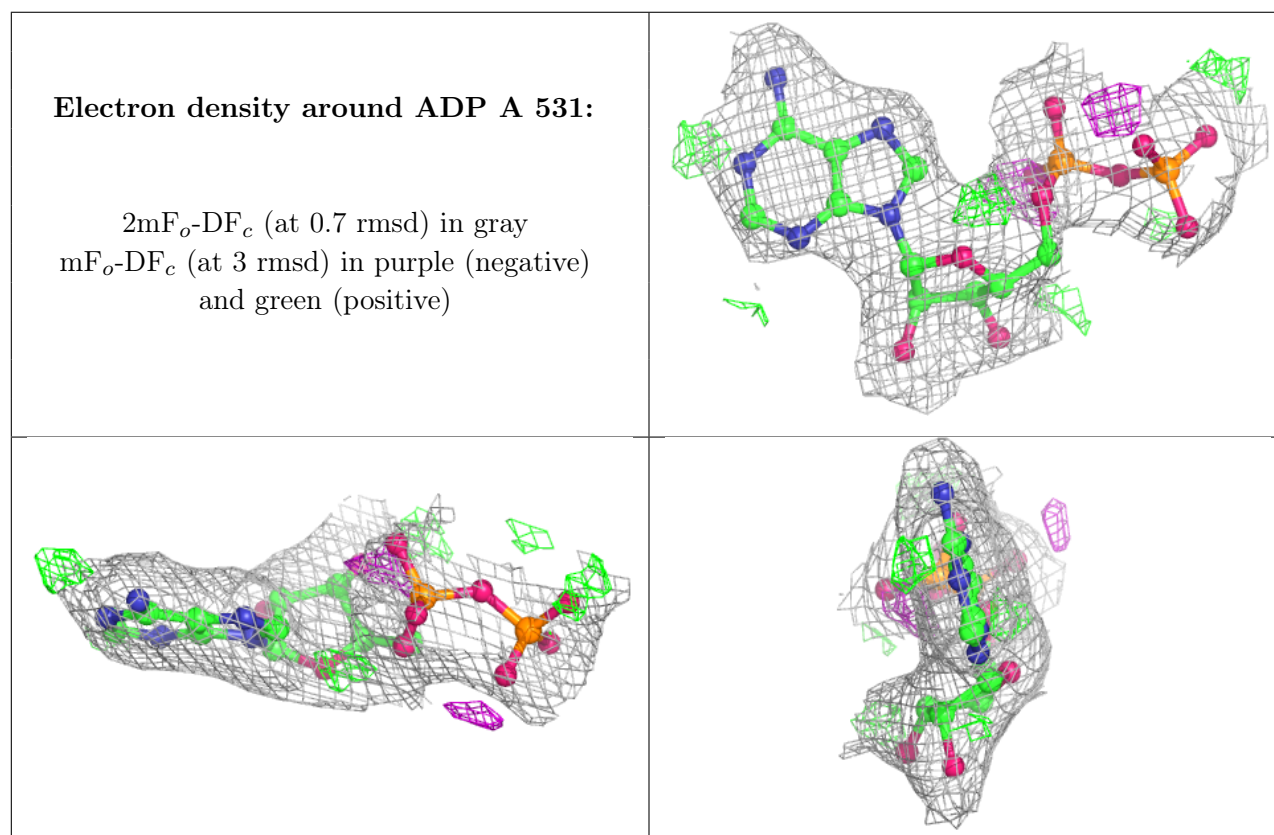
There are no monosaccharides in this entry.

## 6.4 Ligands [i](#)

In the following table, the Atoms column lists the number of modelled atoms in the group and the number defined in the chemical component dictionary. The B-factors column lists the minimum, median, 95<sup>th</sup> percentile and maximum values of B factors of atoms in the group. The column labelled 'Q<0.9' lists the number of atoms with occupancy less than 0.9.

Mol	Type	Chain	Res	Atoms	RSCC	RSR	B-factors( $\text{\AA}^2$ )	Q<0.9
3	MG	A	1393	1/1	0.82	0.20	52,52,52,52	0
3	MG	A	1392	1/1	0.88	0.22	47,47,47,47	0
2	ADP	A	531	27/27	0.94	0.19	22,46,54,62	0

The following is a graphical depiction of the model fit to experimental electron density of all instances of the Ligand of Interest. In addition, ligands with molecular weight > 250 and outliers as shown on the geometry validation Tables will also be included. Each fit is shown from different orientation to approximate a three-dimensional view.



## 6.5 Other polymers [i](#)

There are no such residues in this entry.