



# Full wwPDB X-ray Structure Validation Report ⓘ

Jun 17, 2024 – 09:04 PM EDT

PDB ID : 5QQD  
Title : PanDDA analysis group deposition – Crystal Structure of Kalirin/Rac1 in complex with Z56880342  
Authors : Gray, J.L.; Krojer, T.; Talon, R.; Douangamath, A.; Jimenez Antunez, C.; Bountra, C.; Arrowsmith, C.H.; Edwards, A.; Brennan, P.E.; von Delft, F.  
Deposited on : 2019-05-03  
Resolution : 1.91 Å(reported)

This is a Full wwPDB X-ray Structure Validation Report for a publicly released PDB entry.

We welcome your comments at [validation@mail.wwpdb.org](mailto:validation@mail.wwpdb.org)

A user guide is available at

<https://www.wwpdb.org/validation/2017/XrayValidationReportHelp>

with specific help available everywhere you see the ⓘ symbol.

The types of validation reports are described at

<http://www.wwpdb.org/validation/2017/FAQs#types>.

---

The following versions of software and data (see [references ⓘ](#)) were used in the production of this report:

MolProbity	:	4.02b-467
Mogul	:	1.8.5 (274361), CSD as541be (2020)
Xtriage (Phenix)	:	1.13
EDS	:	2.37.1
Percentile statistics	:	20191225.v01 (using entries in the PDB archive December 25th 2019)
Refmac	:	5.8.0158
CCP4	:	7.0.044 (Gargrove)
Ideal geometry (proteins)	:	Engh & Huber (2001)
Ideal geometry (DNA, RNA)	:	Parkinson et al. (1996)
Validation Pipeline (wwPDB-VP)	:	2.37.1

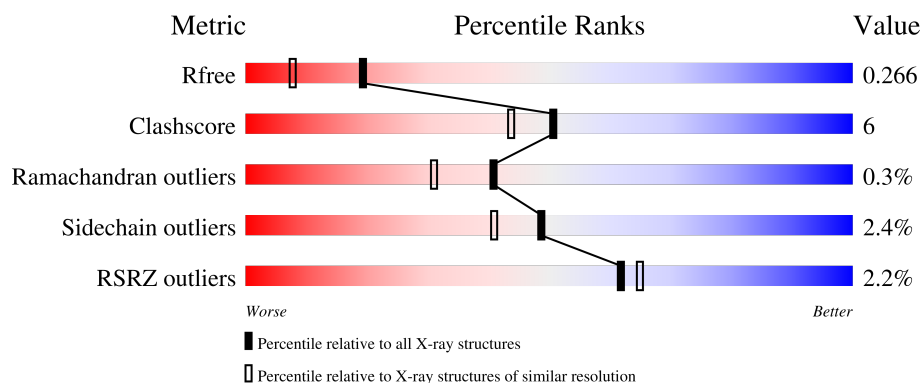
# 1 Overall quality at a glance

The following experimental techniques were used to determine the structure:

*X-RAY DIFFRACTION*

The reported resolution of this entry is 1.91 Å.

Percentile scores (ranging between 0-100) for global validation metrics of the entry are shown in the following graphic. The table shows the number of entries on which the scores are based.



Metric	Whole archive (#Entries)	Similar resolution (#Entries, resolution range(Å))
$R_{free}$	130704	7937 (1.94-1.90)
Clashscore	141614	8644 (1.94-1.90)
Ramachandran outliers	138981	8530 (1.94-1.90)
Sidechain outliers	138945	8530 (1.94-1.90)
RSRZ outliers	127900	7793 (1.94-1.90)

The table below summarises the geometric issues observed across the polymeric chains and their fit to the electron density. The red, orange, yellow and green segments of the lower bar indicate the fraction of residues that contain outliers for  $\geq 3$ , 2, 1 and 0 types of geometric quality criteria respectively. A grey segment represents the fraction of residues that are not modelled. The numeric value for each fraction is indicated below the corresponding segment, with a dot representing fractions  $\leq 5\%$ . The upper red bar (where present) indicates the fraction of residues that have poor fit to the electron density. The numeric value is given above the bar.

Mol	Chain	Length	Quality of chain
1	A	178	<div> <div>3%</div> <div>85%</div> <div>13%</div> <div>..</div> </div>
2	B	182	<div> <div>2%</div> <div>87%</div> <div>11%</div> <div>..</div> </div>

## 2 Entry composition

There are 5 unique types of molecules in this entry. The entry contains 3128 atoms, of which 0 are hydrogens and 0 are deuteriums.

In the tables below, the ZeroOcc column contains the number of atoms modelled with zero occupancy, the AltConf column contains the number of residues with at least one atom in alternate conformation and the Trace column contains the number of residues modelled with at most 2 atoms.

- Molecule 1 is a protein called Ras-related C3 botulinum toxin substrate 1.

Mol	Chain	Residues	Atoms					ZeroOcc	AltConf	Trace
1	A	177	Total	C	N	O	S	0	0	0
			1352	868	221	256	7			

There is a discrepancy between the modelled and reference sequences:

Chain	Residue	Modelled	Actual	Comment	Reference
A	0	SER	-	expression tag	UNP P63000

- Molecule 2 is a protein called Kalirin.

Mol	Chain	Residues	Atoms					ZeroOcc	AltConf	Trace
2	B	179	Total	C	N	O	S	0	0	0
			1421	916	230	265	10			

There are 3 discrepancies between the modelled and reference sequences:

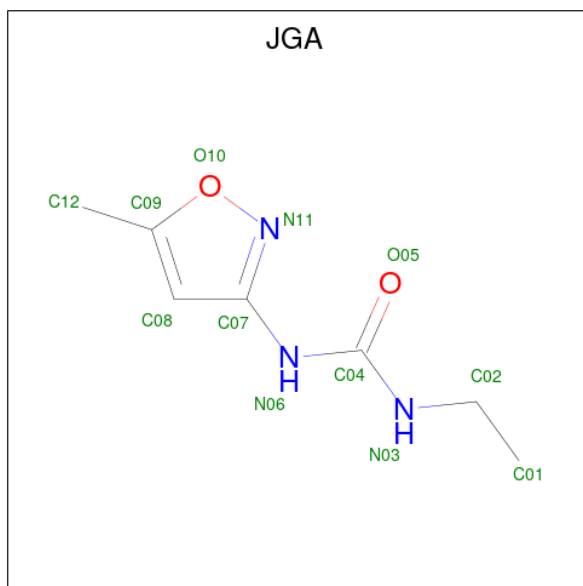
Chain	Residue	Modelled	Actual	Comment	Reference
B	1230	SER	-	expression tag	UNP O60229
B	1231	MET	-	expression tag	UNP O60229
B	1370	VAL	ILE	conflict	UNP O60229

- Molecule 3 is 1,2-ETHANEDIOL (three-letter code: EDO) (formula: C<sub>2</sub>H<sub>6</sub>O<sub>2</sub>).



Mol	Chain	Residues	Atoms			ZeroOcc	AltConf
3	A	1	Total	C	O	0	0
			4	2	2		

- Molecule 4 is N-ethyl-N'-(5-methyl-1,2-oxazol-3-yl)urea (three-letter code: JGA) (formula:  $C_7H_{11}N_3O_2$ ).



Mol	Chain	Residues	Atoms				ZeroOcc	AltConf
4	A	1	Total	C	N	O	0	0
			12	7	3	2		


- Molecule 5 is water.

Mol	Chain	Residues	Atoms		ZeroOcc	AltConf
5	A	177	Total 177	O 177	0	0
5	B	162	Total 162	O 162	0	0

### 3 Residue-property plots [i](#)


These plots are drawn for all protein, RNA, DNA and oligosaccharide chains in the entry. The first graphic for a chain summarises the proportions of the various outlier classes displayed in the second graphic. The second graphic shows the sequence view annotated by issues in geometry and electron density. Residues are color-coded according to the number of geometric quality criteria for which they contain at least one outlier: green = 0, yellow = 1, orange = 2 and red = 3 or more. A red dot above a residue indicates a poor fit to the electron density ( $RSRZ > 2$ ). Stretches of 2 or more consecutive residues without any outlier are shown as a green connector. Residues present in the sample, but not in the model, are shown in grey.

- Molecule 1: Ras-related C3 botulinum toxin substrate 1

Chain A:  3% 85% 13% ..



- Molecule 2: Kalirin

Chain B:  2% 87% 11% ..



## 4 Data and refinement statistics

Property	Value	Source
Space group	P 65 2 2	Depositor
Cell constants a, b, c, $\alpha$ , $\beta$ , $\gamma$	62.84Å 62.84Å 342.58Å 90.00° 90.00° 120.00°	Depositor
Resolution (Å)	57.10 – 1.91 57.10 – 1.91	Depositor EDS
% Data completeness (in resolution range)	99.7 (57.10-1.91) 99.7 (57.10-1.91)	Depositor EDS
$R_{merge}$	0.51	Depositor
$R_{sym}$	(Not available)	Depositor
$\langle I/\sigma(I) \rangle$ <sup>1</sup>	1.60 (at 1.91Å)	Xtriage
Refinement program	REFMAC 5.8.0238	Depositor
R, $R_{free}$	0.206 , 0.259 0.216 , 0.266	Depositor DCC
$R_{free}$ test set	1633 reflections (5.03%)	wwPDB-VP
Wilson B-factor (Å <sup>2</sup> )	33.6	Xtriage
Anisotropy	0.016	Xtriage
Bulk solvent $k_{sol}$ (e/Å <sup>3</sup> ), $B_{sol}$ (Å <sup>2</sup> )	0.30 , 39.2	EDS
L-test for twinning <sup>2</sup>	$\langle  L  \rangle = 0.45$ , $\langle L^2 \rangle = 0.28$	Xtriage
Estimated twinning fraction	No twinning to report.	Xtriage
$F_o, F_c$ correlation	0.95	EDS
Total number of atoms	3128	wwPDB-VP
Average B, all atoms (Å <sup>2</sup> )	39.0	wwPDB-VP

Xtriage's analysis on translational NCS is as follows: *The largest off-origin peak in the Patterson function is 4.36% of the height of the origin peak. No significant pseudotranslation is detected.*

<sup>1</sup>Intensities estimated from amplitudes.

<sup>2</sup>Theoretical values of  $\langle |L| \rangle$ ,  $\langle L^2 \rangle$  for acentric reflections are 0.5, 0.333 respectively for untwinned datasets, and 0.375, 0.2 for perfectly twinned datasets.

## 5 Model quality

### 5.1 Standard geometry

Bond lengths and bond angles in the following residue types are not validated in this section: EDO, JGA

The Z score for a bond length (or angle) is the number of standard deviations the observed value is removed from the expected value. A bond length (or angle) with  $|Z| > 5$  is considered an outlier worth inspection. RMSZ is the root-mean-square of all Z scores of the bond lengths (or angles).

Mol	Chain	Bond lengths		Bond angles	
		RMSZ	$\# Z  > 5$	RMSZ	$\# Z  > 5$
1	A	0.67	0/1382	0.83	0/1890
2	B	0.70	0/1451	0.77	0/1964
All	All	0.69	0/2833	0.80	0/3854

There are no bond length outliers.

There are no bond angle outliers.

There are no chirality outliers.

There are no planarity outliers.

### 5.2 Too-close contacts

In the following table, the Non-H and H(model) columns list the number of non-hydrogen atoms and hydrogen atoms in the chain respectively. The H(added) column lists the number of hydrogen atoms added and optimized by MolProbity. The Clashes column lists the number of clashes within the asymmetric unit, whereas Symm-Clashes lists symmetry-related clashes.

Mol	Chain	Non-H	H(model)	H(added)	Clashes	Symm-Clashes
1	A	1352	0	1325	18	1
2	B	1421	0	1367	18	0
3	A	4	0	6	0	0
4	A	12	0	0	0	0
5	A	177	0	0	3	0
5	B	162	0	0	7	0
All	All	3128	0	2698	31	1

The all-atom clashscore is defined as the number of clashes found per 1000 atoms (including hydrogen atoms). The all-atom clashscore for this structure is 6.

All (31) close contacts within the same asymmetric unit are listed below, sorted by their clash



magnitude.

Atom-1	Atom-2	Interatomic distance (Å)	Clash overlap (Å)
1:A:66:ARG:H	2:B:1406:ASN:HD21	1.13	0.93
2:B:1261:TRP:O	2:B:1265:SER:HB2	1.79	0.81
2:B:1410:HIS:C	5:B:1504:HOH:O	2.21	0.78
2:B:1234:LYS:CE	5:B:1501:HOH:O	2.37	0.71
1:A:38:ASP:OD2	5:A:301:HOH:O	2.12	0.67
1:A:66:ARG:N	2:B:1406:ASN:HD21	1.90	0.67
1:A:66:ARG:H	2:B:1406:ASN:ND2	1.93	0.62
1:A:74:GLN:NE2	2:B:1339:LEU:HD11	2.18	0.59
1:A:4:ILE:HD12	1:A:51:VAL:HG11	1.86	0.58
1:A:14:VAL:HG22	1:A:16:LYS:HG3	1.87	0.56
1:A:74:GLN:HE22	2:B:1339:LEU:HD11	1.70	0.56
2:B:1308:GLU:OE2	5:B:1501:HOH:O	2.18	0.54
1:A:45:MET:N	5:A:302:HOH:O	2.21	0.52
1:A:41:SER:HA	1:A:53:LEU:O	2.10	0.52
2:B:1284:ASN:ND2	2:B:1323:MET:HB2	2.27	0.50
1:A:11:ASP:OD2	1:A:89:SER:HA	2.11	0.49
2:B:1243:GLN:HG3	5:B:1622:HOH:O	2.13	0.48
1:A:68:ARG:N	1:A:69:PRO:CD	2.78	0.47
2:B:1386:GLU:O	5:B:1502:HOH:O	2.21	0.46
2:B:1265:SER:OG	2:B:1267:VAL:HG23	2.16	0.45
2:B:1267:VAL:N	5:B:1509:HOH:O	2.49	0.45
2:B:1331:LYS:N	2:B:1332:PRO:CD	2.81	0.44
1:A:69:PRO:HA	1:A:72:TYR:CD2	2.52	0.44
1:A:102:ARG:HD3	1:A:102:ARG:HA	1.90	0.43
2:B:1265:SER:C	5:B:1509:HOH:O	2.57	0.43
2:B:1389:GLY:C	2:B:1391:LEU:H	2.20	0.43
1:A:142:GLY:HA3	1:A:154:TYR:CZ	2.54	0.43
1:A:139:TYR:N	1:A:140:PRO:HD2	2.34	0.43
1:A:163:ARG:HD3	5:A:439:HOH:O	2.18	0.42
1:A:14:VAL:CG2	1:A:16:LYS:HG3	2.50	0.41
2:B:1252:LEU:HD22	2:B:1285:ILE:HD11	2.03	0.40

All (1) symmetry-related close contacts are listed below. The label for Atom-2 includes the symmetry operator and encoded unit-cell translations to be applied.

Atom-1	Atom-2	Interatomic distance (Å)	Clash overlap (Å)
1:A:91:GLU:OE2	1:A:91:GLU:OE2[10_665]	1.52	0.68

## 5.3 Torsion angles

### 5.3.1 Protein backbone

In the following table, the Percentiles column shows the percent Ramachandran outliers of the chain as a percentile score with respect to all X-ray entries followed by that with respect to entries of similar resolution.

The Analysed column shows the number of residues for which the backbone conformation was analysed, and the total number of residues.

Mol	Chain	Analysed	Favoured	Allowed	Outliers	Percentiles	
1	A	175/178 (98%)	170 (97%)	5 (3%)	0	100	100
2	B	177/182 (97%)	169 (96%)	7 (4%)	1 (1%)	25	14
All	All	352/360 (98%)	339 (96%)	12 (3%)	1 (0%)	41	31

All (1) Ramachandran outliers are listed below:

Mol	Chain	Res	Type
2	B	1390	GLU

### 5.3.2 Protein sidechains

In the following table, the Percentiles column shows the percent sidechain outliers of the chain as a percentile score with respect to all X-ray entries followed by that with respect to entries of similar resolution.

The Analysed column shows the number of residues for which the sidechain conformation was analysed, and the total number of residues.

Mol	Chain	Analysed	Rotameric	Outliers	Percentiles	
1	A	144/154 (94%)	140 (97%)	4 (3%)	43	34
2	B	148/166 (89%)	145 (98%)	3 (2%)	55	49
All	All	292/320 (91%)	285 (98%)	7 (2%)	49	41

All (7) residues with a non-rotameric sidechain are listed below:

Mol	Chain	Res	Type
1	A	1	MET
1	A	35	THR
1	A	160	LEU
1	A	163	ARG
2	B	1232	ARG

*Continued on next page...*

*Continued from previous page...*

Mol	Chain	Res	Type
2	B	1265	SER
2	B	1268	GLU

Sometimes sidechains can be flipped to improve hydrogen bonding and reduce clashes. All (4) such sidechains are listed below:

Mol	Chain	Res	Type
1	A	74	GLN
1	A	162	GLN
2	B	1335	ASN
2	B	1406	ASN

### 5.3.3 RNA [i](#)

There are no RNA molecules in this entry.

## 5.4 Non-standard residues in protein, DNA, RNA chains [i](#)

There are no non-standard protein/DNA/RNA residues in this entry.

## 5.5 Carbohydrates [i](#)

There are no monosaccharides in this entry.

## 5.6 Ligand geometry [i](#)

2 ligands are modelled in this entry.

In the following table, the Counts columns list the number of bonds (or angles) for which Mogul statistics could be retrieved, the number of bonds (or angles) that are observed in the model and the number of bonds (or angles) that are defined in the Chemical Component Dictionary. The Link column lists molecule types, if any, to which the group is linked. The Z score for a bond length (or angle) is the number of standard deviations the observed value is removed from the expected value. A bond length (or angle) with  $|Z| > 2$  is considered an outlier worth inspection. RMSZ is the root-mean-square of all Z scores of the bond lengths (or angles).

Mol	Type	Chain	Res	Link	Bond lengths			Bond angles		
					Counts	RMSZ	$\# Z  > 2$	Counts	RMSZ	$\# Z  > 2$
3	EDO	A	201	-	3,3,3	0.12	0	2,2,2	0.34	0
4	JGA	A	202	-	9,12,12	2.88	6 (66%)	8,15,15	2.90	3 (37%)

In the following table, the Chirals column lists the number of chiral outliers, the number of chiral centers analysed, the number of these observed in the model and the number defined in the Chemical Component Dictionary. Similar counts are reported in the Torsion and Rings columns. '-' means no outliers of that kind were identified.

Mol	Type	Chain	Res	Link	Chirals	Torsions	Rings
3	EDO	A	201	-	-	0/1/1/1	-
4	JGA	A	202	-	-	0/5/7/7	0/1/1/1

All (6) bond length outliers are listed below:

Mol	Chain	Res	Type	Atoms	Z	Observed(Å)	Ideal(Å)
4	A	202	JGA	C04-N06	5.30	1.48	1.37
4	A	202	JGA	C04-N03	3.83	1.43	1.35
4	A	202	JGA	O05-C04	3.70	1.31	1.23
4	A	202	JGA	C07-N06	-2.27	1.35	1.40
4	A	202	JGA	C08-C09	-2.05	1.36	1.39
4	A	202	JGA	C08-C07	2.05	1.48	1.39

All (3) bond angle outliers are listed below:

Mol	Chain	Res	Type	Atoms	Z	Observed(°)	Ideal(°)
4	A	202	JGA	C07-N06-C04	-6.79	120.87	130.41
4	A	202	JGA	C09-C08-C07	-3.72	103.39	107.23
4	A	202	JGA	C02-N03-C04	-2.33	118.10	121.53

There are no chirality outliers.

There are no torsion outliers.

There are no ring outliers.

No monomer is involved in short contacts.

## 5.7 Other polymers

There are no such residues in this entry.

## 5.8 Polymer linkage issues

There are no chain breaks in this entry.

## 6 Fit of model and data [i](#)

### 6.1 Protein, DNA and RNA chains [i](#)

In the following table, the column labelled ‘#RSRZ > 2’ contains the number (and percentage) of RSRZ outliers, followed by percent RSRZ outliers for the chain as percentile scores relative to all X-ray entries and entries of similar resolution. The OWAB column contains the minimum, median, 95<sup>th</sup> percentile and maximum values of the occupancy-weighted average B-factor per residue. The column labelled ‘Q < 0.9’ lists the number of (and percentage) of residues with an average occupancy less than 0.9.

Mol	Chain	Analysed	<RSRZ>	#RSRZ > 2			OWAB(Å <sup>2</sup> )	Q < 0.9
1	A	177/178 (99%)	-0.17	5 (2%)	53	56	25, 33, 62, 79	5 (2%)
2	B	179/182 (98%)	-0.24	3 (1%)	70	72	23, 37, 67, 101	0
All	All	356/360 (98%)	-0.21	8 (2%)	62	65	23, 35, 65, 101	5 (1%)

All (8) RSRZ outliers are listed below:

Mol	Chain	Res	Type	RSRZ
1	A	46	VAL	10.0
1	A	48	GLY	8.7
1	A	49	LYS	7.3
1	A	50	PRO	7.1
1	A	47	ASP	6.4
2	B	1389	GLY	3.6
2	B	1387	GLY	3.5
2	B	1266	GLY	2.4

### 6.2 Non-standard residues in protein, DNA, RNA chains [i](#)

There are no non-standard protein/DNA/RNA residues in this entry.

### 6.3 Carbohydrates [i](#)

There are no monosaccharides in this entry.

### 6.4 Ligands [i](#)

In the following table, the Atoms column lists the number of modelled atoms in the group and the number defined in the chemical component dictionary. The B-factors column lists the minimum,

median, 95<sup>th</sup> percentile and maximum values of B factors of atoms in the group. The column labelled 'Q<0.9' lists the number of atoms with occupancy less than 0.9.

Mol	Type	Chain	Res	Atoms	RSCC	RSR	B-factors( $\text{\AA}^2$ )	Q<0.9
3	EDO	A	201	4/4	0.68	0.23	69,72,76,79	0
4	JGA	A	202	12/12	0.86	0.15	32,39,43,44	12

## 6.5 Other polymers [i](#)

There are no such residues in this entry.