



## Full wwPDB EM Validation Report ⓘ

Oct 14, 2024 – 02:24 AM EDT

PDB ID : 7T0W  
EMDB ID : EMD-25583  
Title : Complex of GABA-A synaptic receptor with autoimmune antibody Fab115  
Authors : Noviello, C.M.; Hibbs, R.E.; Kreye, J.; Teng, J.; Pruss, H.  
Deposited on : 2021-11-30  
Resolution : 3.00 Å(reported)

This is a Full wwPDB EM Validation Report for a publicly released PDB entry.

We welcome your comments at [validation@mail.wwpdb.org](mailto:validation@mail.wwpdb.org)

A user guide is available at

<https://www.wwpdb.org/validation/2017/EMValidationReportHelp>

with specific help available everywhere you see the ⓘ symbol.

The types of validation reports are described at

<http://www.wwpdb.org/validation/2017/FAQs#types>.

---

The following versions of software and data (see [references ⓘ](#)) were used in the production of this report:

EMDB validation analysis : 0.0.1.dev113  
Mogul : 2022.3.0, CSD as543be (2022)  
MolProbity : 4.02b-467  
Percentile statistics : 20231227.v01 (using entries in the PDB archive December 27th 2023)  
MapQ : 1.9.13  
Ideal geometry (proteins) : Engh & Huber (2001)  
Ideal geometry (DNA, RNA) : Parkinson et al. (1996)  
Validation Pipeline (wwPDB-VP) : 2.39

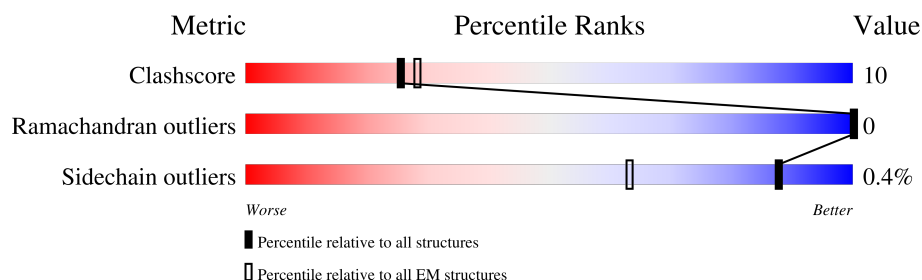
# 1 Overall quality at a glance

The following experimental techniques were used to determine the structure:

*ELECTRON MICROSCOPY*

The reported resolution of this entry is 3.00 Å.

Percentile scores (ranging between 0-100) for global validation metrics of the entry are shown in the following graphic. The table shows the number of entries on which the scores are based.



Metric	Whole archive (#Entries)	EM structures (#Entries)
Clashscore	210492	15764
Ramachandran outliers	207382	16835
Sidechain outliers	206894	16415

The table below summarises the geometric issues observed across the polymeric chains and their fit to the map. The red, orange, yellow and green segments of the bar indicate the fraction of residues that contain outliers for  $\geq 3$ , 2, 1 and 0 types of geometric quality criteria respectively. A grey segment represents the fraction of residues that are not modelled. The numeric value for each fraction is indicated below the corresponding segment, with a dot representing fractions  $\leq 5\%$ . The upper red bar (where present) indicates the fraction of residues that have poor fit to the EM map (all-atom inclusion  $< 40\%$ ). The numeric value is given above the bar.

Mol	Chain	Length	Quality of chain
1	A	340	
1	C	340	
2	B	347	
2	D	347	
3	E	394	
4	L	217	
4	L2	217	
5	H	246	

*Continued on next page...*

*Continued from previous page...*

Mol	Chain	Length	Quality of chain
5	H2	246	 37% 12% 51%
6	F	2	 50% 50%
6	G	2	 50% 50%
6	J	2	 50% 50%
6	K	2	 50% 50%
7	I	3	 67% 33%
7	M	3	 33% 33% 33%
8	N	10	 20% 70% 10%

## 2 Entry composition

There are 8 unique types of molecules in this entry. The entry contains 34654 atoms, of which 17227 are hydrogens and 0 are deuteriums.

In the tables below, the AltConf column contains the number of residues with at least one atom in alternate conformation and the Trace column contains the number of residues modelled with at most 2 atoms.

- Molecule 1 is a protein called Gamma-aminobutyric acid receptor subunit beta-2.

Mol	Chain	Residues	Atoms						AltConf	Trace
1	A	334	Total	C	H	N	O	S	0	0
			5473	1791	2741	440	485	16		
1	C	334	Total	C	H	N	O	S	0	0
			5473	1791	2741	440	485	16		

There are 18 discrepancies between the modelled and reference sequences:

Chain	Residue	Modelled	Actual	Comment	Reference
A	308	SER	-	linker	UNP P47870
A	309	GLN	-	linker	UNP P47870
A	310	PRO	-	linker	UNP P47870
A	311	ALA	-	linker	UNP P47870
A	312	ARG	-	linker	UNP P47870
A	313	ALA	-	linker	UNP P47870
A	314	ALA	-	linker	UNP P47870
A	315	ALA	-	linker	UNP P47870
A	316	ILE	-	linker	UNP P47870
C	308	SER	-	linker	UNP P47870
C	309	GLN	-	linker	UNP P47870
C	310	PRO	-	linker	UNP P47870
C	311	ALA	-	linker	UNP P47870
C	312	ARG	-	linker	UNP P47870
C	313	ALA	-	linker	UNP P47870
C	314	ALA	-	linker	UNP P47870
C	315	ALA	-	linker	UNP P47870
C	316	ILE	-	linker	UNP P47870

- Molecule 2 is a protein called Gamma-aminobutyric acid receptor subunit alpha-1.

Mol	Chain	Residues	Atoms						AltConf	Trace
2	B	338	Total	C	H	N	O	S	0	0
			5454	1763	2724	461	490	16		

*Continued on next page...*

*Continued from previous page...*

Mol	Chain	Residues	Atoms						AltConf	Trace
2	D	338	Total	C	H	N	O	S	0	0
			5454	1763	2724	461	490	16		

There are 14 discrepancies between the modelled and reference sequences:

Chain	Residue	Modelled	Actual	Comment	Reference
B	313	SER	-	linker	UNP P14867
B	314	GLN	-	linker	UNP P14867
B	315	PRO	-	linker	UNP P14867
B	316	ALA	-	linker	UNP P14867
B	317	ARG	-	linker	UNP P14867
B	318	ALA	-	linker	UNP P14867
B	319	ALA	-	linker	UNP P14867
D	313	SER	-	linker	UNP P14867
D	314	GLN	-	linker	UNP P14867
D	315	PRO	-	linker	UNP P14867
D	316	ALA	-	linker	UNP P14867
D	317	ARG	-	linker	UNP P14867
D	318	ALA	-	linker	UNP P14867
D	319	ALA	-	linker	UNP P14867

- Molecule 3 is a protein called Gamma-aminobutyric acid receptor subunit gamma-2.

Mol	Chain	Residues	Atoms						AltConf	Trace
3	E	333	Total	C	H	N	O	S	0	0
			5443	1781	2714	448	485	15		

There are 44 discrepancies between the modelled and reference sequences:

Chain	Residue	Modelled	Actual	Comment	Reference
E	-36	TRP	-	expression tag	UNP P18507
E	-35	SER	-	expression tag	UNP P18507
E	-34	HIS	-	expression tag	UNP P18507
E	-33	PRO	-	expression tag	UNP P18507
E	-32	GLN	-	expression tag	UNP P18507
E	-31	PHE	-	expression tag	UNP P18507
E	-30	GLU	-	expression tag	UNP P18507
E	-29	LYS	-	expression tag	UNP P18507
E	-28	GLY	-	expression tag	UNP P18507
E	-27	GLY	-	expression tag	UNP P18507
E	-26	GLY	-	expression tag	UNP P18507
E	-25	SER	-	expression tag	UNP P18507

*Continued on next page...*

*Continued from previous page...*

Chain	Residue	Modelled	Actual	Comment	Reference
E	-24	GLY	-	expression tag	UNP P18507
E	-23	GLY	-	expression tag	UNP P18507
E	-22	GLY	-	expression tag	UNP P18507
E	-21	SER	-	expression tag	UNP P18507
E	-20	GLY	-	expression tag	UNP P18507
E	-19	GLY	-	expression tag	UNP P18507
E	-18	SER	-	expression tag	UNP P18507
E	-17	SER	-	expression tag	UNP P18507
E	-16	ALA	-	expression tag	UNP P18507
E	-15	TRP	-	expression tag	UNP P18507
E	-14	SER	-	expression tag	UNP P18507
E	-13	HIS	-	expression tag	UNP P18507
E	-12	PRO	-	expression tag	UNP P18507
E	-11	GLN	-	expression tag	UNP P18507
E	-10	PHE	-	expression tag	UNP P18507
E	-9	GLU	-	expression tag	UNP P18507
E	-8	LYS	-	expression tag	UNP P18507
E	-7	LEU	-	expression tag	UNP P18507
E	-6	GLU	-	expression tag	UNP P18507
E	-5	VAL	-	expression tag	UNP P18507
E	-4	LEU	-	expression tag	UNP P18507
E	-3	PHE	-	expression tag	UNP P18507
E	-2	GLN	-	expression tag	UNP P18507
E	-1	GLY	-	expression tag	UNP P18507
E	0	PRO	-	expression tag	UNP P18507
E	323	SER	-	linker	UNP P18507
E	324	GLN	-	linker	UNP P18507
E	325	PRO	-	linker	UNP P18507
E	326	ALA	-	linker	UNP P18507
E	327	ARG	-	linker	UNP P18507
E	328	ALA	-	linker	UNP P18507
E	329	ALA	-	linker	UNP P18507

- Molecule 4 is a protein called Fab115 light chain, IgG1.

Mol	Chain	Residues	Atoms						AltConf	Trace
4	L2	110	Total	C	H	N	O	S	0	0
			1582	495	782	139	164	2		
4	L	110	Total	C	H	N	O	S	0	0
			1568	495	768	139	164	2		

- Molecule 5 is a protein called Fab115 Heavy Chain, IgG1.

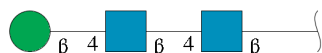
Mol	Chain	Residues	Atoms						AltConf	Trace
5	H	121	Total	C	H	N	O	S	0	0
			1821	585	887	157	186	6		
5	H2	121	Total	C	H	N	O	S	0	0
			1821	585	887	157	186	6		

- Molecule 6 is an oligosaccharide called 2-acetamido-2-deoxy-beta-D-glucopyranose-(1-4)-2-acetamido-2-deoxy-beta-D-glucopyranose.



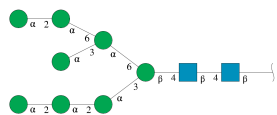
Mol	Chain	Residues	Atoms						AltConf	Trace
6	F	2	Total	C	H	N	O		0	0
			53	16	25	2	10			
6	G	2	Total	C	H	N	O		0	0
			53	16	25	2	10			
6	J	2	Total	C	H	N	O		0	0
			53	16	25	2	10			
6	K	2	Total	C	H	N	O		0	0
			53	16	25	2	10			

- Molecule 7 is an oligosaccharide called beta-D-mannopyranose-(1-4)-2-acetamido-2-deoxy-beta-D-glucopyranose-(1-4)-2-acetamido-2-deoxy-beta-D-glucopyranose.



Mol	Chain	Residues	Atoms						AltConf	Trace
7	I	3	Total	C	H	N	O		0	0
			73	22	34	2	15			
7	M	3	Total	C	H	N	O		0	0
			73	22	34	2	15			

- Molecule 8 is an oligosaccharide called alpha-D-mannopyranose-(1-2)-alpha-D-mannopyranose-(1-2)-alpha-D-mannopyranose-(1-3)-[alpha-D-mannopyranose-(1-2)-alpha-D-mannopyranose-(1-6)-[alpha-D-mannopyranose-(1-3)]alpha-D-mannopyranose-(1-6)]beta-D-mannopyranose-(1-4)-2-acetamido-2-deoxy-beta-D-glucopyranose-(1-4)-2-acetamido-2-deoxy-beta-D-glucopyranose.



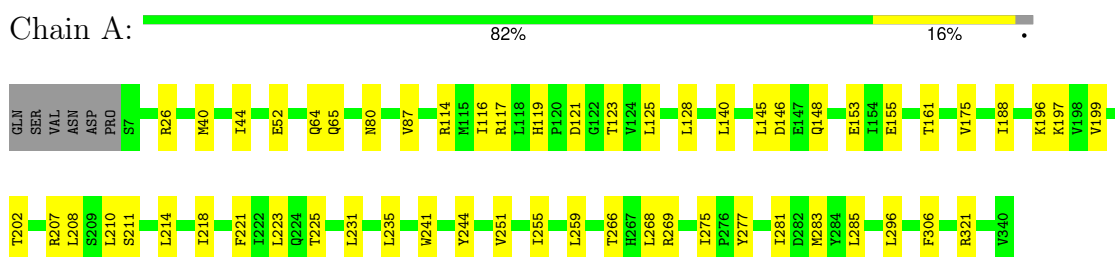
Mol	Chain	Residues	Atoms					AltConf	Trace
8	N	10	Total	C	H	N	O	0	0
			207	64	91	2	50		



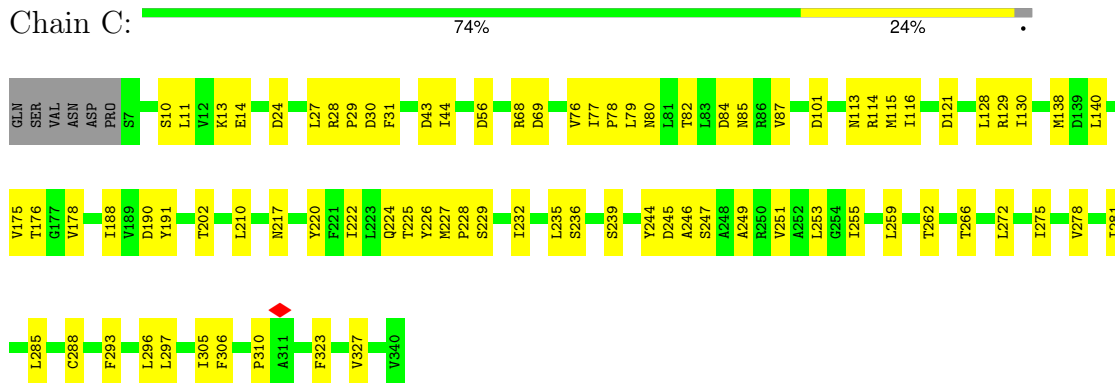
### 3 Residue-property plots

These plots are drawn for all protein, RNA, DNA and oligosaccharide chains in the entry. The first graphic for a chain summarises the proportions of the various outlier classes displayed in the second graphic. The second graphic shows the sequence view annotated by issues in geometry and atom inclusion in map density. Residues are color-coded according to the number of geometric quality criteria for which they contain at least one outlier: green = 0, yellow = 1, orange = 2 and red = 3 or more. A red diamond above a residue indicates a poor fit to the EM map for this residue (all-atom inclusion < 40%). Stretches of 2 or more consecutive residues without any outlier are shown as a green connector. Residues present in the sample, but not in the model, are shown in grey.

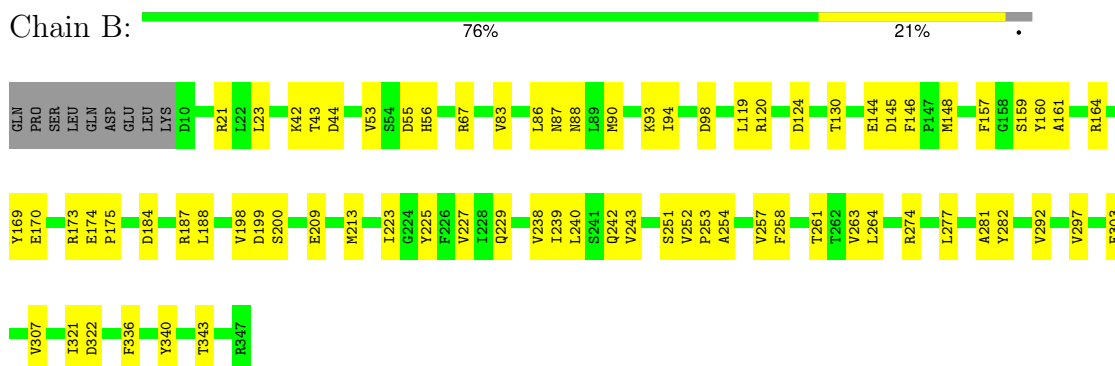
- Molecule 1: Gamma-aminobutyric acid receptor subunit beta-2



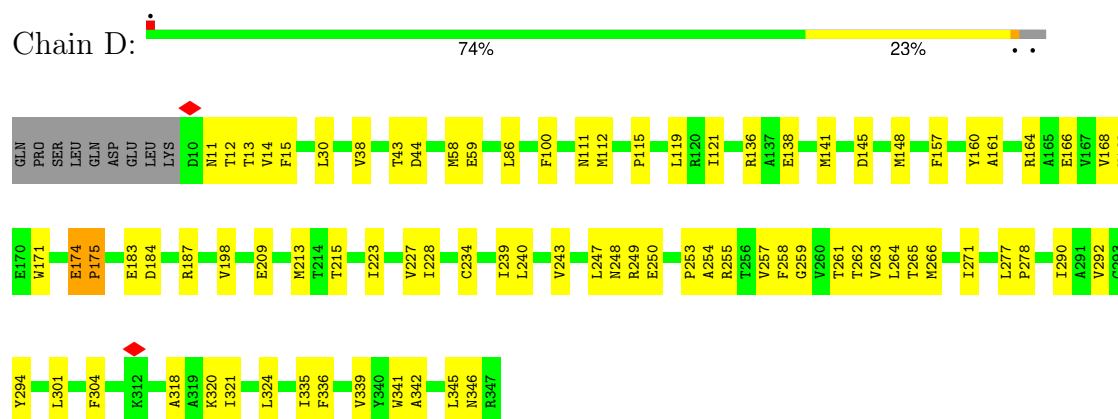
- Molecule 1: Gamma-aminobutyric acid receptor subunit beta-2



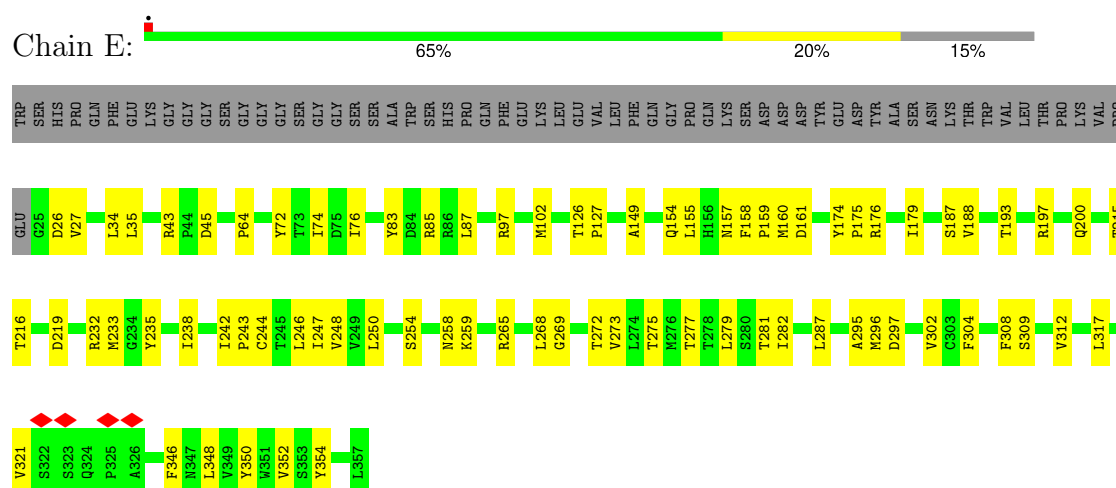
- Molecule 2: Gamma-aminobutyric acid receptor subunit alpha-1



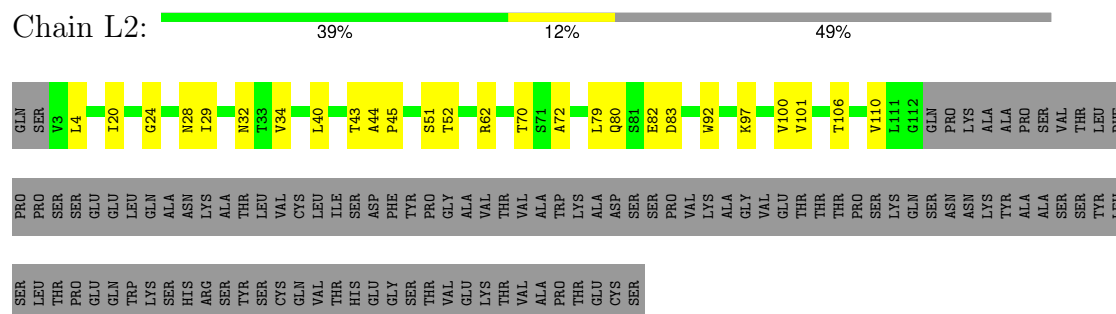
- Molecule 2: Gamma-aminobutyric acid receptor subunit alpha-1



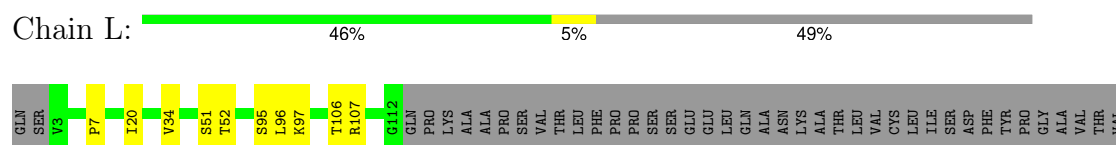
- Molecule 3: Gamma-aminobutyric acid receptor subunit gamma-2

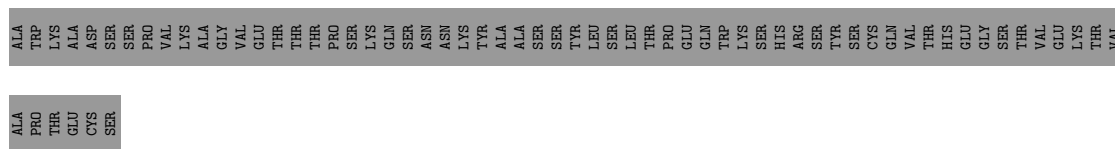


- Molecule 4: Fab115 light chain, IgG1

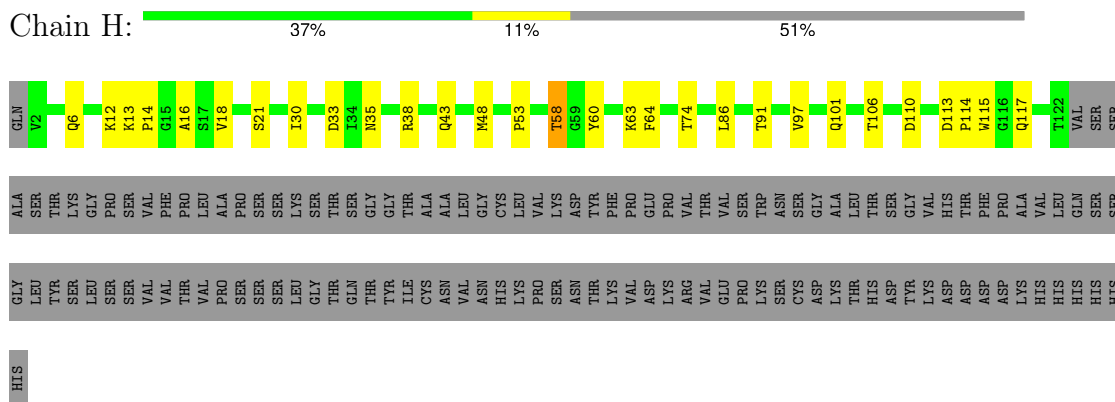


- Molecule 4: Fab115 light chain, IgG1

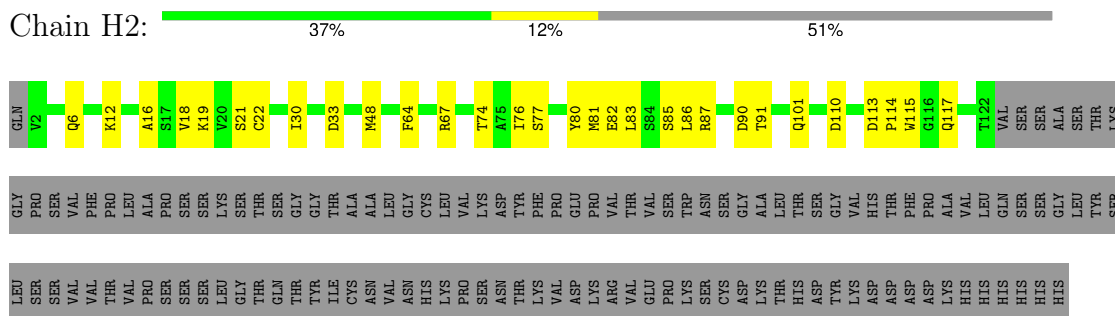




- Molecule 5: Fab115 Heavy Chain, IgG1



- Molecule 5: Fab115 Heavy Chain, IgG1



- Molecule 6: 2-acetamido-2-deoxy-beta-D-glucopyranose-(1-4)-2-acetamido-2-deoxy-beta-D-glucopyranose



- Molecule 6: 2-acetamido-2-deoxy-beta-D-glucopyranose-(1-4)-2-acetamido-2-deoxy-beta-D-glucopyranose



- Molecule 6: 2-acetamido-2-deoxy-beta-D-glucopyranose-(1-4)-2-acetamido-2-deoxy-beta-D-glucopyranose

Chain J:  50% 50%

MAG1  
MAG2

- Molecule 6: 2-acetamido-2-deoxy-beta-D-glucopyranose-(1-4)-2-acetamido-2-deoxy-beta-D-glucopyranose

Chain K:  50% 50%

MAG1  
MAG2

- Molecule 7: beta-D-mannopyranose-(1-4)-2-acetamido-2-deoxy-beta-D-glucopyranose-(1-4)-2-acetamido-2-deoxy-beta-D-glucopyranose

Chain I:  67% 33%

MAG1  
MAG2  
BMA3

- Molecule 7: beta-D-mannopyranose-(1-4)-2-acetamido-2-deoxy-beta-D-glucopyranose-(1-4)-2-acetamido-2-deoxy-beta-D-glucopyranose

Chain M:  33% 33% 33%

MAG1  
MAG2  
BMA3

- Molecule 8: alpha-D-mannopyranose-(1-2)-alpha-D-mannopyranose-(1-2)-alpha-D-mannopyranose-(1-3)-[alpha-D-mannopyranose-(1-2)-alpha-D-mannopyranose-(1-6)]-[alpha-D-mannopyranose-(1-3)]alpha-D-mannopyranose-(1-6)]beta-D-mannopyranose-(1-4)-2-acetamido-2-deoxy-beta-D-glucopyranose-(1-4)-2-acetamido-2-deoxy-beta-D-glucopyranose

Chain N:  20% 70% 10%

MAG1  
MAG2  
BMA3  
MAN4  
MAN5  
MAN6  
MAN7  
MAN8  
MAN9  
MAN10

## 4 Experimental information

Property	Value	Source
EM reconstruction method	SINGLE PARTICLE	Depositor
Imposed symmetry	POINT, Not provided	
Number of particles used	788748	Depositor
Resolution determination method	FSC 0.143 CUT-OFF	Depositor
CTF correction method	PHASE FLIPPING AND AMPLITUDE CORRECTION	Depositor
Microscope	FEI TITAN KRIOS	Depositor
Voltage (kV)	300	Depositor
Electron dose ( $e^-/\text{\AA}^2$ )	40	Depositor
Minimum defocus (nm)	800	Depositor
Maximum defocus (nm)	2200	Depositor
Magnification	Not provided	
Image detector	GATAN K3 BIOQUANTUM (6k x 4k)	Depositor
Maximum map value	0.125	Depositor
Minimum map value	-0.064	Depositor
Average map value	0.000	Depositor
Map value standard deviation	0.003	Depositor
Recommended contour level	0.013	Depositor
Map size (Å)	323.7, 323.7, 323.7	wwPDB
Map dimensions	300, 300, 300	wwPDB
Map angles (°)	90.0, 90.0, 90.0	wwPDB
Pixel spacing (Å)	1.079, 1.079, 1.079	Depositor

## 5 Model quality

### 5.1 Standard geometry

Bond lengths and bond angles in the following residue types are not validated in this section: MAN, NAG, BMA

The Z score for a bond length (or angle) is the number of standard deviations the observed value is removed from the expected value. A bond length (or angle) with  $|Z| > 5$  is considered an outlier worth inspection. RMSZ is the root-mean-square of all Z scores of the bond lengths (or angles).

Mol	Chain	Bond lengths		Bond angles	
		RMSZ	# $ Z  > 5$	RMSZ	# $ Z  > 5$
1	A	0.37	0/2804	0.53	0/3818
1	C	0.38	0/2804	0.55	0/3818
2	B	0.41	0/2799	0.57	0/3805
2	D	0.41	0/2799	0.59	0/3805
3	E	0.35	0/2805	0.50	0/3822
4	L	0.38	0/816	0.55	0/1111
4	L2	0.37	0/816	0.58	0/1111
5	H	0.42	0/955	0.61	0/1294
5	H2	0.40	0/955	0.55	0/1294
All	All	0.39	0/17553	0.55	0/23878

There are no bond length outliers.

There are no bond angle outliers.

There are no chirality outliers.

There are no planarity outliers.

### 5.2 Too-close contacts

In the following table, the Non-H and H(model) columns list the number of non-hydrogen atoms and hydrogen atoms in the chain respectively. The H(added) column lists the number of hydrogen atoms added and optimized by MolProbity. The Clashes column lists the number of clashes within the asymmetric unit, whereas Symm-Clashes lists symmetry-related clashes.

Mol	Chain	Non-H	H(model)	H(added)	Clashes	Symm-Clashes
1	A	2732	2741	2741	46	0
1	C	2732	2741	2741	73	0
2	B	2730	2724	2724	66	0
2	D	2730	2724	2724	66	0

*Continued on next page...*

*Continued from previous page...*

Mol	Chain	Non-H	H(model)	H(added)	Clashes	Symm-Clashes
3	E	2729	2714	2714	60	0
4	L	800	768	779	8	0
4	L2	800	782	781	24	0
5	H	934	887	886	22	0
5	H2	934	887	886	23	0
6	F	28	25	25	1	0
6	G	28	25	25	3	0
6	J	28	25	25	1	0
6	K	28	25	25	0	0
7	I	39	34	34	0	0
7	M	39	34	34	2	0
8	N	116	91	97	1	0
All	All	17427	17227	17241	350	0

The all-atom clashscore is defined as the number of clashes found per 1000 atoms (including hydrogen atoms). The all-atom clashscore for this structure is 10.

All (350) close contacts within the same asymmetric unit are listed below, sorted by their clash magnitude.

Atom-1	Atom-2	Interatomic distance (Å)	Clash overlap (Å)
2:D:86:LEU:HD11	2:D:121:ILE:HD11	1.47	0.93
4:L2:34:VAL:HG22	4:L2:52:THR:HG22	1.53	0.90
3:E:155:LEU:HD13	3:E:287:LEU:HD22	1.57	0.84
2:B:94:ILE:HD11	2:B:119:LEU:HD21	1.59	0.83
4:L2:62:ARG:NH2	4:L2:83:ASP:OD1	2.15	0.80
4:L:7:PRO:O	4:L:106:THR:HG22	1.82	0.80
1:C:251:VAL:HG13	2:D:258:PHE:CE1	2.17	0.79
1:C:76:VAL:HG23	1:C:77:ILE:HD12	1.63	0.78
5:H:113:ASP:OD1	5:H:114:PRO:HD3	1.84	0.77
2:D:223:ILE:HG22	2:D:227:VAL:HG23	1.67	0.76
1:C:78:PRO:O	6:G:1:NAG:H83	1.84	0.76
2:D:301:LEU:HD13	3:E:250:LEU:HD11	1.68	0.76
4:L2:24:GLY:O	4:L2:70:THR:OG1	2.04	0.76
4:L2:51:SER:O	4:L2:52:THR:OG1	2.04	0.75
1:C:43:ASP:OD1	1:C:176:THR:OG1	2.06	0.74
2:D:253:PRO:O	2:D:257:VAL:HG23	1.87	0.74
1:C:202:THR:HG22	1:C:202:THR:O	1.87	0.73
1:C:251:VAL:HG21	2:D:254:ALA:HB1	1.71	0.72
4:L:34:VAL:HG22	4:L:52:THR:HG22	1.72	0.72
3:E:158:PHE:CE1	3:E:287:LEU:HD21	2.26	0.70
2:B:175:PRO:O	2:B:198:VAL:HG21	1.90	0.70

*Continued on next page...*

*Continued from previous page...*

Atom-1	Atom-2	Interatomic distance (Å)	Clash overlap (Å)
5:H2:67:ARG:NH2	5:H2:90:ASP:OD2	2.24	0.70
5:H:12:LYS:HD2	5:H:18:VAL:HG12	1.72	0.70
1:C:296:LEU:HD22	2:D:240:LEU:HD11	1.73	0.69
4:L2:80:GLN:NE2	4:L2:82:GLU:OE2	2.25	0.69
1:C:229:SER:OG	1:C:288:CYS:SG	2.49	0.69
5:H:58:THR:HG21	5:H:60:TYR:CZ	2.29	0.68
2:D:248:ASN:OD1	2:D:249:ARG:N	2.27	0.67
1:C:140:LEU:HD22	1:C:275:ILE:HD13	1.75	0.67
2:B:175:PRO:C	2:B:198:VAL:HG21	2.16	0.66
2:D:184:ASP:O	2:D:187:ARG:NH1	2.28	0.66
4:L:95:SER:O	4:L:96:LEU:HD23	1.96	0.66
3:E:155:LEU:CD1	3:E:287:LEU:HD22	2.28	0.64
2:D:86:LEU:HD11	2:D:121:ILE:CD1	2.25	0.64
3:E:157:ASN:O	3:E:160:MET:N	2.30	0.64
1:A:251:VAL:O	1:A:255:ILE:HG22	1.98	0.64
2:D:138:GLU:OE1	3:E:197:ARG:NH2	2.31	0.64
2:D:259:GLY:O	2:D:263:VAL:HG23	1.98	0.63
3:E:295:ALA:O	3:E:350:TYR:OH	2.17	0.63
1:A:155:GLU:OE1	1:A:207:ARG:NH2	2.29	0.63
3:E:277:THR:O	3:E:281:THR:HG23	2.00	0.62
2:D:174:GLU:O	2:D:175:PRO:C	2.38	0.61
1:A:188:ILE:HD13	1:A:214:LEU:HD23	1.82	0.61
2:D:59:GLU:OE1	2:D:136:ARG:NH1	2.31	0.61
1:C:239:SER:HB3	1:C:253:LEU:HD22	1.81	0.61
4:L2:34:VAL:CG2	4:L2:52:THR:HG22	2.29	0.61
1:A:225:THR:HG22	1:A:268:LEU:HD21	1.82	0.61
1:A:175:VAL:HG21	1:A:210:LEU:HD13	1.83	0.60
2:B:199:ASP:OD1	2:B:200:SER:N	2.34	0.60
2:D:145:ASP:O	2:D:148:MET:N	2.34	0.60
5:H:6:GLN:OE1	5:H:117:GLN:O	2.19	0.60
3:E:43:ARG:NH1	3:E:45:ASP:O	2.36	0.59
5:H:58:THR:HG21	5:H:60:TYR:CE2	2.37	0.59
3:E:176:ARG:N	3:E:219:ASP:O	2.35	0.59
2:D:164:ARG:N	2:D:209:GLU:O	2.35	0.59
1:C:225:THR:HG21	1:C:281:ILE:HD11	1.84	0.59
4:L:51:SER:O	4:L:52:THR:OG1	2.17	0.59
1:A:64:GLN:OE1	1:A:125:LEU:HD11	2.02	0.58
2:B:145:ASP:O	2:B:148:MET:N	2.37	0.58
5:H2:6:GLN:OE1	5:H2:117:GLN:O	2.22	0.58
3:E:35:LEU:HD11	3:E:102:MET:SD	2.44	0.58
1:C:202:THR:O	1:C:202:THR:CG2	2.52	0.57

*Continued on next page...*



*Continued from previous page...*

Atom-1	Atom-2	Interatomic distance (Å)	Clash overlap (Å)
3:E:34:LEU:HD22	3:E:87:LEU:HA	1.86	0.57
4:L:34:VAL:CG2	4:L:52:THR:HG22	2.33	0.57
3:E:269:GLY:O	3:E:273:VAL:HG23	2.04	0.57
4:L2:32:ASN:ND2	4:L2:92:TRP:O	2.38	0.57
5:H:48:MET:SD	5:H:64:PHE:CE2	2.98	0.57
1:C:272:LEU:HD11	1:C:281:ILE:HD13	1.86	0.57
2:D:239:ILE:O	2:D:243:VAL:HG23	2.03	0.57
2:D:264:LEU:HD13	3:E:275:THR:OG1	2.05	0.57
1:A:251:VAL:HG13	2:B:258:PHE:HD2	1.70	0.56
1:A:296:LEU:HD23	2:B:240:LEU:HD21	1.87	0.56
2:D:43:THR:HG21	2:D:157:PHE:CZ	2.40	0.56
2:B:86:LEU:HD22	2:B:90:MET:SD	2.45	0.56
1:C:76:VAL:HG23	1:C:77:ILE:CD1	2.33	0.56
2:B:144:GLU:N	2:B:282:TYR:OH	2.38	0.56
3:E:254:SER:O	3:E:265:ARG:NE	2.39	0.56
1:C:323:PHE:O	1:C:327:VAL:HG23	2.07	0.55
2:D:198:VAL:HG12	2:D:215:THR:HG23	1.89	0.55
1:C:113:ASN:OD1	1:C:129:ARG:NH1	2.39	0.55
1:C:10:SER:O	1:C:13:LYS:N	2.40	0.55
2:D:292:VAL:HG11	2:D:336:PHE:CE2	2.42	0.55
1:C:85:ASN:HB2	1:C:114:ARG:HG3	1.90	0.54
2:D:294:TYR:CE2	3:E:246:LEU:HD22	2.42	0.54
2:B:251:SER:OG	2:B:254:ALA:HB3	2.08	0.54
2:B:274:ARG:CZ	1:C:220:TYR:CE1	2.91	0.54
2:D:301:LEU:HD23	2:D:301:LEU:O	2.07	0.54
2:B:303:GLU:O	2:B:307:VAL:HG23	2.07	0.54
1:C:251:VAL:O	1:C:255:ILE:HG22	2.07	0.54
1:A:161:THR:HG21	1:A:197:LYS:HD3	1.89	0.54
5:H:33:ASP:HA	5:H:53:PRO:CD	2.37	0.54
3:E:193:THR:HG22	3:E:193:THR:O	2.08	0.54
1:C:80:ASN:OD1	6:G:1:NAG:H2	2.08	0.53
2:B:146:PHE:CE2	2:B:277:LEU:HD21	2.43	0.53
1:C:114:ARG:HB3	1:C:128:LEU:HD23	1.89	0.53
4:L2:4:LEU:CD1	4:L2:29:ILE:HD11	2.38	0.53
1:C:140:LEU:HD22	1:C:275:ILE:CD1	2.38	0.53
5:H2:18:VAL:CG1	5:H2:86:LEU:HD21	2.38	0.53
3:E:258:ASN:OD1	3:E:259:LYS:N	2.42	0.52
2:B:274:ARG:CD	2:B:277:LEU:HD12	2.39	0.52
1:C:68:ARG:NH2	1:C:121:ASP:O	2.42	0.52
1:C:281:ILE:O	1:C:285:LEU:HD23	2.10	0.52
2:D:175:PRO:C	2:D:198:VAL:HG21	2.30	0.52

*Continued on next page...*

*Continued from previous page...*

Atom-1	Atom-2	Interatomic distance (Å)	Clash overlap (Å)
2:D:183:GLU:OE1	2:D:183:GLU:HA	2.10	0.52
3:E:154:GLN:HA	3:E:154:GLN:OE1	2.10	0.52
5:H:63:LYS:HE3	5:H:64:PHE:CE1	2.45	0.52
1:C:27:LEU:HD11	2:D:15:PHE:CD2	2.45	0.51
5:H:16:ALA:O	5:H:86:LEU:HD23	2.10	0.51
1:A:146:ASP:OD2	1:A:148:GLN:NE2	2.43	0.51
2:B:83:VAL:HG21	2:B:120:ARG:HD2	1.92	0.51
5:H:30:ILE:HD11	5:H:74:THR:HG23	1.93	0.51
2:D:38:VAL:HG12	2:D:168:VAL:HG22	1.91	0.51
2:B:146:PHE:CD2	2:B:277:LEU:HD21	2.46	0.51
2:B:223:ILE:HG22	2:B:227:VAL:HG23	1.92	0.51
1:A:140:LEU:HD13	1:A:275:ILE:HG12	1.92	0.51
2:B:43:THR:HG22	2:B:44:ASP:N	2.26	0.51
2:D:247:LEU:HD11	2:D:258:PHE:CE2	2.45	0.51
2:B:281:ALA:HB1	1:C:217:ASN:CB	2.40	0.50
2:B:292:VAL:HG11	2:B:336:PHE:CZ	2.46	0.50
1:A:80:ASN:OD1	1:A:119:HIS:CD2	2.64	0.50
2:D:169:TYR:C	2:D:213:MET:CE	2.79	0.50
2:B:94:ILE:CD1	2:B:119:LEU:HD21	2.36	0.50
1:C:175:VAL:HG21	1:C:210:LEU:HD13	1.93	0.50
2:D:248:ASN:OD1	2:D:250:GLU:OE1	2.29	0.50
3:E:26:ASP:OD1	3:E:27:VAL:N	2.45	0.50
2:B:281:ALA:HB1	1:C:217:ASN:HB3	1.94	0.50
1:A:121:ASP:OD1	1:A:123:THR:OG1	2.27	0.50
4:L:20:ILE:HG23	4:L:106:THR:HG21	1.92	0.50
1:A:196:LYS:NZ	7:M:2:NAG:O7	2.45	0.50
3:E:242:ILE:O	3:E:246:LEU:HD13	2.11	0.50
1:A:241:TRP:CD1	1:A:321:ARG:HD3	2.47	0.49
1:C:244:TYR:CE2	1:C:306:PHE:CZ	3.01	0.49
2:B:274:ARG:HD3	2:B:277:LEU:HD12	1.94	0.49
2:D:11:ASN:OD1	2:D:12:THR:HG23	2.12	0.49
2:D:294:TYR:HE2	3:E:246:LEU:HD22	1.77	0.49
3:E:72:TYR:CE1	3:E:149:ALA:HB3	2.47	0.49
3:E:74:ILE:HG12	3:E:76:ILE:HG23	1.95	0.49
3:E:279:LEU:HD23	3:E:282:ILE:HD11	1.94	0.49
6:J:1:NAG:H82	8:N:9:MAN:O6	2.13	0.49
2:B:87:ASN:OD1	2:B:88:ASN:N	2.46	0.49
1:C:10:SER:O	1:C:14:GLU:OE1	2.31	0.49
2:B:164:ARG:N	2:B:209:GLU:O	2.43	0.48
1:C:116:ILE:HG23	1:C:116:ILE:O	2.12	0.48
1:C:178:VAL:HG11	1:C:191:TYR:CD1	2.48	0.48

*Continued on next page...*

*Continued from previous page...*

Atom-1	Atom-2	Interatomic distance (Å)	Clash overlap (Å)
5:H:106:THR:O	5:H:106:THR:HG23	2.13	0.48
1:A:87:VAL:HG22	1:A:87:VAL:O	2.13	0.48
1:C:224:GLN:OE1	1:C:224:GLN:HA	2.13	0.48
2:D:277:LEU:HD12	2:D:278:PRO:HD2	1.94	0.48
1:A:202:THR:HG22	1:A:202:THR:O	2.12	0.48
1:C:296:LEU:HD23	1:C:296:LEU:O	2.13	0.48
1:C:278:VAL:HG22	2:D:228:ILE:HD11	1.94	0.48
3:E:159:PRO:HG2	3:E:233:MET:HG3	1.96	0.48
1:A:40:MET:HG3	1:A:208:LEU:HD12	1.96	0.48
2:B:169:TYR:HB3	2:B:213:MET:CE	2.44	0.48
5:H2:16:ALA:O	5:H2:86:LEU:HD13	2.12	0.48
1:C:28:ARG:NH1	1:C:30:ASP:O	2.47	0.48
2:D:258:PHE:O	2:D:262:THR:HG23	2.13	0.48
4:L2:92:TRP:CD1	5:H2:110:ASP:HB2	2.48	0.48
2:B:23:LEU:HD21	2:B:93:LYS:HB3	1.95	0.48
5:H2:76:ILE:HG22	5:H2:76:ILE:O	2.13	0.48
1:A:231:LEU:HD13	3:E:304:PHE:HE2	1.79	0.47
1:C:259:LEU:HD21	2:D:264:LEU:HD23	1.96	0.47
2:D:271:ILE:HG12	3:E:282:ILE:HD13	1.95	0.47
1:C:222:ILE:HD13	1:C:226:TYR:HD2	1.79	0.47
3:E:215:THR:HG22	3:E:216:THR:N	2.29	0.47
2:D:320:LYS:NZ	2:D:324:LEU:HD11	2.29	0.47
2:B:42:LYS:HA	2:B:170:GLU:O	2.14	0.47
2:B:251:SER:HG	2:B:254:ALA:HB3	1.78	0.47
1:C:245:ASP:O	1:C:247:SER:N	2.47	0.47
2:D:171:TRP:O	4:L:97:LYS:HE3	2.15	0.47
5:H:6:GLN:HG3	5:H:21:SER:O	2.15	0.47
2:D:169:TYR:O	2:D:213:MET:CE	2.62	0.47
1:A:199:VAL:HG23	1:A:199:VAL:O	2.15	0.47
1:C:255:ILE:HG21	2:D:257:VAL:HG12	1.96	0.47
2:D:301:LEU:HD23	2:D:301:LEU:C	2.35	0.47
4:L2:4:LEU:HD11	4:L2:29:ILE:HD11	1.95	0.47
2:B:307:VAL:HG22	2:B:321:ILE:CD1	2.45	0.47
5:H2:30:ILE:HD11	5:H2:74:THR:HG23	1.96	0.47
1:A:87:VAL:CG1	1:A:116:ILE:HG21	2.45	0.47
2:B:239:ILE:O	2:B:243:VAL:HG23	2.15	0.47
5:H:33:ASP:HA	5:H:53:PRO:HD3	1.97	0.47
6:F:1:NAG:C1	6:F:1:NAG:O7	2.62	0.47
1:C:24:ASP:OD2	1:C:27:LEU:HD23	2.15	0.46
1:C:140:LEU:HD12	1:C:140:LEU:N	2.30	0.46
2:D:168:VAL:O	2:D:168:VAL:HG23	2.14	0.46

*Continued on next page...*

*Continued from previous page...*

Atom-1	Atom-2	Interatomic distance (Å)	Clash overlap (Å)
2:B:67:ARG:HG2	2:B:130:THR:HG22	1.97	0.46
3:E:187:SER:OG	3:E:188:VAL:N	2.48	0.46
1:A:153:GLU:OE1	1:A:207:ARG:HD3	2.15	0.46
2:D:175:PRO:O	2:D:198:VAL:HG21	2.15	0.46
2:D:234:CYS:SG	2:D:290:ILE:HD13	2.55	0.46
2:D:342:ALA:O	2:D:346:ASN:OD1	2.34	0.46
3:E:155:LEU:HD13	3:E:287:LEU:CD2	2.37	0.46
3:E:259:LYS:HD2	3:E:321:VAL:HG22	1.97	0.46
2:D:111:ASN:HA	2:D:115:PRO:HA	1.98	0.46
5:H2:91:THR:HG23	5:H2:91:THR:O	2.15	0.46
1:C:87:VAL:HG12	1:C:116:ILE:HG21	1.98	0.46
1:A:114:ARG:CB	1:A:128:LEU:HD23	2.45	0.46
3:E:317:LEU:O	3:E:321:VAL:HG23	2.16	0.46
2:D:175:PRO:HB3	2:D:198:VAL:HG23	1.98	0.46
2:B:159:SER:HB2	2:B:169:TYR:HE1	1.81	0.46
2:D:86:LEU:HD12	2:D:119:LEU:CD2	2.46	0.46
3:E:295:ALA:HB2	3:E:354:TYR:CE1	2.51	0.46
2:B:263:VAL:HG22	2:B:297:VAL:HG12	1.98	0.45
3:E:281:THR:OG1	3:E:282:ILE:N	2.49	0.45
5:H2:12:LYS:HD2	5:H2:18:VAL:HG12	1.99	0.45
3:E:247:ILE:CD1	3:E:275:THR:HG21	2.47	0.45
1:C:138:MET:HB3	1:C:140:LEU:HD11	1.98	0.45
1:C:246:ALA:HB1	1:C:249:ALA:HB3	1.98	0.45
2:D:341:TRP:O	2:D:345:LEU:HD23	2.17	0.45
3:E:159:PRO:HD3	3:E:296:MET:HB2	1.98	0.45
1:A:114:ARG:HB3	1:A:128:LEU:HD23	1.98	0.45
2:B:98:ASP:OD2	2:B:160:TYR:O	2.34	0.45
3:E:273:VAL:O	3:E:277:THR:HG23	2.17	0.45
1:A:40:MET:SD	1:A:65:GLN:HG2	2.56	0.45
2:B:43:THR:HG21	2:B:157:PHE:CZ	2.52	0.45
4:L2:20:ILE:HD12	4:L2:106:THR:HG21	1.97	0.45
1:A:52:GLU:HB3	1:A:140:LEU:HD11	1.99	0.45
2:B:307:VAL:HG22	2:B:321:ILE:HD11	1.99	0.45
2:D:160:TYR:O	2:D:161:ALA:HB3	2.17	0.45
2:D:292:VAL:HG11	2:D:336:PHE:CD2	2.51	0.45
5:H:91:THR:O	5:H:91:THR:HG23	2.17	0.45
6:G:1:NAG:O7	6:G:1:NAG:H3	2.15	0.45
5:H2:113:ASP:HB3	5:H2:114:PRO:HD3	1.98	0.45
3:E:302:VAL:HG11	3:E:346:PHE:CZ	2.52	0.44
4:L2:34:VAL:HG21	4:L2:72:ALA:CB	2.47	0.44
5:H2:85:SER:O	5:H2:87:ARG:HD3	2.17	0.44

*Continued on next page...*

*Continued from previous page...*

Atom-1	Atom-2	Interatomic distance (Å)	Clash overlap (Å)
1:A:145:LEU:HD23	1:A:218:ILE:HD13	2.00	0.44
1:C:27:LEU:HD12	1:C:31:PHE:CG	2.53	0.44
2:D:86:LEU:HD12	2:D:119:LEU:HD23	1.99	0.44
1:A:44:ILE:HD11	1:A:210:LEU:HD21	1.98	0.44
2:B:175:PRO:C	2:B:198:VAL:CG2	2.83	0.44
5:H:35:ASN:O	5:H:97:VAL:HG22	2.17	0.44
1:A:251:VAL:HG21	2:B:254:ALA:HB1	2.00	0.44
4:L2:92:TRP:CD2	4:L2:100:VAL:HG12	2.52	0.44
5:H2:76:ILE:O	5:H2:77:SER:OG	2.28	0.44
4:L2:92:TRP:NE1	5:H2:110:ASP:HB2	2.32	0.44
1:C:253:LEU:C	1:C:253:LEU:HD23	2.38	0.44
2:D:266:MET:HB2	2:D:266:MET:HE2	1.83	0.44
1:A:211:SER:HB3	7:M:1:NAG:O7	2.17	0.44
1:C:188:ILE:HD12	1:C:188:ILE:H	1.82	0.44
1:A:269:ARG:CZ	2:B:229:GLN:HG3	2.48	0.44
4:L2:4:LEU:HD23	4:L2:101:VAL:CG1	2.48	0.44
5:H2:48:MET:SD	5:H2:64:PHE:CE2	3.11	0.44
5:H2:18:VAL:HG13	5:H2:86:LEU:HD21	1.99	0.44
2:B:21:ARG:HA	2:B:21:ARG:NE	2.33	0.43
1:C:236:SER:HA	1:C:253:LEU:HD21	1.99	0.43
1:A:244:TYR:CE2	1:A:306:PHE:CZ	3.05	0.43
1:A:269:ARG:NH2	2:B:229:GLN:HG3	2.32	0.43
2:B:169:TYR:HB3	2:B:213:MET:HE3	2.00	0.43
1:C:138:MET:HB3	1:C:140:LEU:CD1	2.49	0.43
2:B:184:ASP:O	2:B:187:ARG:NH1	2.52	0.43
1:C:44:ILE:HD11	1:C:210:LEU:HD21	2.01	0.43
1:C:77:ILE:HG22	1:C:79:LEU:H	1.84	0.43
4:L2:40:LEU:O	4:L2:43:THR:HG22	2.19	0.43
2:B:161:ALA:CB	1:C:115:MET:HG3	2.48	0.43
1:C:130:ILE:HG12	2:D:112:MET:HE1	2.00	0.43
1:A:255:ILE:HG12	2:B:261:THR:OG1	2.19	0.43
2:B:55:ASP:OD1	2:B:56:HIS:N	2.51	0.43
1:C:56:ASP:OD1	1:C:56:ASP:C	2.55	0.43
3:E:242:ILE:HB	3:E:243:PRO:HD3	1.99	0.43
2:B:340:TYR:O	2:B:343:THR:HG22	2.18	0.43
1:C:178:VAL:HG11	1:C:191:TYR:CE1	2.53	0.43
3:E:197:ARG:HG2	3:E:197:ARG:O	2.19	0.43
1:C:29:PRO:HB3	1:C:69:ASP:OD1	2.19	0.43
2:B:170:GLU:C	2:B:213:MET:HE2	2.40	0.43
3:E:126:THR:O	3:E:127:PRO:C	2.57	0.43
5:H2:33:ASP:OD1	5:H2:33:ASP:O	2.37	0.43

*Continued on next page...*

*Continued from previous page...*

Atom-1	Atom-2	Interatomic distance (Å)	Clash overlap (Å)
2:B:175:PRO:HB3	2:B:198:VAL:HG23	2.00	0.42
2:B:274:ARG:NE	2:B:277:LEU:HB2	2.33	0.42
2:B:124:ASP:OD1	2:B:124:ASP:O	2.37	0.42
2:D:318:ALA:O	2:D:321:ILE:HG22	2.19	0.42
2:B:238:VAL:HG12	2:B:242:GLN:OE1	2.19	0.42
4:L2:34:VAL:HG22	4:L2:52:THR:CG2	2.38	0.42
1:A:225:THR:CG2	1:A:268:LEU:HD21	2.48	0.42
2:B:144:GLU:HG3	2:B:282:TYR:OH	2.18	0.42
1:C:297:LEU:CD2	2:D:243:VAL:HG21	2.49	0.42
2:D:100:PHE:CD1	2:D:160:TYR:HB2	2.54	0.42
5:H:97:VAL:HG12	5:H:115:TRP:CD2	2.54	0.42
1:A:221:PHE:O	1:A:225:THR:OG1	2.29	0.42
2:B:146:PHE:CE2	2:B:277:LEU:CD2	3.02	0.42
2:B:253:PRO:O	2:B:257:VAL:HG13	2.20	0.42
1:C:305:ILE:HG13	1:C:305:ILE:O	2.20	0.42
3:E:126:THR:HG23	3:E:127:PRO:HD2	2.01	0.42
5:H:43:GLN:N	5:H:43:GLN:OE1	2.52	0.42
1:C:235:LEU:O	1:C:253:LEU:HD21	2.19	0.42
4:L2:28:ASN:OD1	4:L2:29:ILE:N	2.48	0.42
5:H2:101:GLN:HB2	5:H2:110:ASP:OD1	2.20	0.42
4:L2:79:LEU:HD21	4:L2:110:VAL:HG22	2.01	0.42
5:H2:21:SER:CB	5:H2:80:TYR:HB3	2.50	0.42
2:B:252:VAL:N	2:B:253:PRO:HD3	2.34	0.42
1:C:227:MET:HB3	1:C:228:PRO:HD3	2.01	0.42
5:H2:81:MET:HE1	5:H2:83:LEU:HB2	2.01	0.42
2:B:161:ALA:O	1:C:82:THR:HG21	2.19	0.42
3:E:244:CYS:O	3:E:248:VAL:HG23	2.19	0.42
4:L2:4:LEU:HD23	4:L2:101:VAL:HG11	2.00	0.42
4:L2:43:THR:OG1	4:L2:44:ALA:N	2.51	0.42
1:A:281:ILE:O	1:A:285:LEU:HD13	2.20	0.42
2:D:255:ARG:HB2	2:D:304:PHE:CE1	2.54	0.42
4:L2:92:TRP:NE1	5:H2:110:ASP:CB	2.83	0.42
1:C:10:SER:O	1:C:11:LEU:C	2.58	0.41
2:D:261:THR:O	2:D:265:THR:HG23	2.20	0.41
1:A:117:ARG:HH12	3:E:175:PRO:HD3	1.85	0.41
1:C:272:LEU:CD1	1:C:281:ILE:HD13	2.50	0.41
1:A:283:MET:HE3	1:A:283:MET:HA	2.01	0.41
1:A:296:LEU:HD23	2:B:240:LEU:HD11	2.01	0.41
1:C:84:ASP:O	1:C:87:VAL:HG12	2.20	0.41
1:C:306:PHE:O	1:C:310:PRO:HD3	2.19	0.41
4:L2:79:LEU:C	4:L2:79:LEU:HD23	2.40	0.41

*Continued on next page...*

*Continued from previous page...*

Atom-1	Atom-2	Interatomic distance (Å)	Clash overlap (Å)
5:H2:6:GLN:HA	5:H2:22:CYS:HA	2.01	0.41
2:B:53:VAL:HG23	2:B:188:LEU:CD2	2.50	0.41
1:C:228:PRO:O	1:C:232:ILE:HG12	2.21	0.41
3:E:215:THR:HG22	3:E:216:THR:H	1.86	0.41
2:B:307:VAL:HG21	2:B:322:ASP:OD1	2.21	0.41
1:C:101:ASP:OD1	1:C:101:ASP:C	2.58	0.41
2:D:13:THR:HG23	2:D:14:VAL:N	2.35	0.41
2:D:43:THR:HG22	2:D:44:ASP:H	1.84	0.41
3:E:83:TYR:HD2	3:E:85:ARG:HH12	1.67	0.41
3:E:309:SER:HA	3:E:312:VAL:HG12	2.02	0.41
5:H:58:THR:CG2	5:H:60:TYR:CZ	3.00	0.41
3:E:200:GLN:O	3:E:232:ARG:N	2.51	0.41
4:L2:45:PRO:HG2	5:H2:115:TRP:CE3	2.55	0.41
1:A:235:LEU:HD11	3:E:308:PHE:CD1	2.56	0.41
1:A:277:TYR:HA	2:B:225:TYR:HB2	2.01	0.41
1:C:262:THR:O	1:C:266:THR:HG23	2.20	0.41
1:C:293:PHE:CE2	1:C:297:LEU:HD11	2.56	0.41
3:E:64:PRO:HD3	3:E:197:ARG:HD2	2.01	0.41
3:E:161:ASP:OD1	3:E:161:ASP:N	2.54	0.41
5:H:113:ASP:OD1	5:H:114:PRO:CD	2.61	0.41
1:A:231:LEU:HD13	3:E:304:PHE:CE2	2.56	0.41
2:B:252:VAL:N	2:B:253:PRO:CD	2.84	0.41
3:E:235:TYR:O	3:E:238:ILE:HG13	2.20	0.41
1:A:266:THR:O	1:A:269:ARG:HB2	2.20	0.40
1:C:296:LEU:HD23	1:C:296:LEU:C	2.41	0.40
2:D:58:MET:SD	2:D:141:MET:HB2	2.60	0.40
3:E:268:LEU:O	3:E:272:THR:HG23	2.22	0.40
5:H:13:LYS:CD	5:H:14:PRO:HD2	2.51	0.40
2:D:30:LEU:HD21	3:E:27:VAL:HB	2.03	0.40
3:E:348:LEU:O	3:E:352:VAL:HG23	2.21	0.40
5:H:101:GLN:HG3	5:H:110:ASP:OD1	2.21	0.40
5:H2:19:LYS:HD3	5:H2:82:GLU:OE2	2.21	0.40
1:A:223:LEU:CD2	3:E:297:ASP:OD2	2.69	0.40
1:A:259:LEU:HD22	2:B:264:LEU:HD23	2.02	0.40
1:C:190:ASP:OD1	1:C:191:TYR:N	2.54	0.40
5:H:38:ARG:HB2	5:H:48:MET:SD	2.61	0.40
2:B:86:LEU:HD23	2:B:86:LEU:HA	1.95	0.40
2:B:238:VAL:O	2:B:242:GLN:OE1	2.39	0.40
2:D:166:GLU:OE2	3:E:97:ARG:HD3	2.22	0.40
2:D:335:ILE:O	2:D:339:VAL:HG12	2.22	0.40
3:E:174:TYR:CG	3:E:179:ILE:HD12	2.57	0.40

*Continued on next page...*



*Continued from previous page...*

Atom-1	Atom-2	Interatomic distance (Å)	Clash overlap (Å)
4:L:107:ARG:HG3	4:L:107:ARG:NH1	2.37	0.40

There are no symmetry-related clashes.

## 5.3 Torsion angles [i](#)

### 5.3.1 Protein backbone [i](#)

In the following table, the Percentiles column shows the percent Ramachandran outliers of the chain as a percentile score with respect to all PDB entries followed by that with respect to all EM entries.

The Analysed column shows the number of residues for which the backbone conformation was analysed, and the total number of residues.

Mol	Chain	Analysed	Favoured	Allowed	Outliers	Percentiles	
1	A	332/340 (98%)	317 (96%)	15 (4%)	0	100	100
1	C	332/340 (98%)	313 (94%)	19 (6%)	0	100	100
2	B	336/347 (97%)	325 (97%)	11 (3%)	0	100	100
2	D	336/347 (97%)	320 (95%)	16 (5%)	0	100	100
3	E	331/394 (84%)	304 (92%)	27 (8%)	0	100	100
4	L	108/217 (50%)	102 (94%)	6 (6%)	0	100	100
4	L2	108/217 (50%)	99 (92%)	9 (8%)	0	100	100
5	H	119/246 (48%)	107 (90%)	12 (10%)	0	100	100
5	H2	119/246 (48%)	109 (92%)	10 (8%)	0	100	100
All	All	2121/2694 (79%)	1996 (94%)	125 (6%)	0	100	100

There are no Ramachandran outliers to report.

### 5.3.2 Protein sidechains [i](#)

In the following table, the Percentiles column shows the percent sidechain outliers of the chain as a percentile score with respect to all PDB entries followed by that with respect to all EM entries.

The Analysed column shows the number of residues for which the sidechain conformation was analysed, and the total number of residues.



Mol	Chain	Analysed	Rotameric	Outliers	Percentiles	
1	A	302/308 (98%)	301 (100%)	1 (0%)	91	96
1	C	302/308 (98%)	302 (100%)	0	100	100
2	B	300/309 (97%)	298 (99%)	2 (1%)	81	91
2	D	300/309 (97%)	298 (99%)	2 (1%)	81	91
3	E	305/355 (86%)	305 (100%)	0	100	100
4	L	89/182 (49%)	89 (100%)	0	100	100
4	L2	89/182 (49%)	88 (99%)	1 (1%)	70	87
5	H	99/210 (47%)	98 (99%)	1 (1%)	73	88
5	H2	99/210 (47%)	99 (100%)	0	100	100
All	All	1885/2373 (79%)	1878 (100%)	7 (0%)	88	95

All (7) residues with a non-rotameric sidechain are listed below:

Mol	Chain	Res	Type
1	A	26	ARG
2	B	173	ARG
2	B	174	GLU
2	D	174	GLU
2	D	175	PRO
4	L2	97	LYS
5	H	58	THR

Sometimes sidechains can be flipped to improve hydrogen bonding and reduce clashes. All (1) such sidechains are listed below:

Mol	Chain	Res	Type
1	A	119	HIS

### 5.3.3 RNA ⓘ

There are no RNA molecules in this entry.

## 5.4 Non-standard residues in protein, DNA, RNA chains ⓘ

There are no non-standard protein/DNA/RNA residues in this entry.

## 5.5 Carbohydrates

24 monosaccharides are modelled in this entry.

In the following table, the Counts columns list the number of bonds (or angles) for which Mogul statistics could be retrieved, the number of bonds (or angles) that are observed in the model and the number of bonds (or angles) that are defined in the Chemical Component Dictionary. The Link column lists molecule types, if any, to which the group is linked. The Z score for a bond length (or angle) is the number of standard deviations the observed value is removed from the expected value. A bond length (or angle) with  $|Z| > 2$  is considered an outlier worth inspection. RMSZ is the root-mean-square of all Z scores of the bond lengths (or angles).

Mol	Type	Chain	Res	Link	Bond lengths			Bond angles		
					Counts	RMSZ	# Z  > 2	Counts	RMSZ	# Z  > 2
6	NAG	F	1	6,1	14,14,15	0.22	0	17,19,21	0.77	1 (5%)
6	NAG	F	2	6	14,14,15	0.20	0	17,19,21	0.71	1 (5%)
6	NAG	G	1	6,1	14,14,15	0.40	0	17,19,21	0.58	0
6	NAG	G	2	6	14,14,15	0.28	0	17,19,21	0.53	0
7	NAG	I	1	1,7	14,14,15	0.25	0	17,19,21	0.60	0
7	NAG	I	2	7	14,14,15	0.26	0	17,19,21	0.61	1 (5%)
7	BMA	I	3	7	11,11,12	0.60	0	15,15,17	0.73	0
6	NAG	J	1	6,2	14,14,15	0.22	0	17,19,21	0.58	0
6	NAG	J	2	6	14,14,15	0.26	0	17,19,21	0.39	0
6	NAG	K	1	6,3	14,14,15	0.40	0	17,19,21	0.76	0
6	NAG	K	2	6	14,14,15	0.30	0	17,19,21	0.89	1 (5%)
7	NAG	M	1	1,7	14,14,15	0.32	0	17,19,21	0.64	1 (5%)
7	NAG	M	2	7	14,14,15	0.29	0	17,19,21	0.41	0
7	BMA	M	3	7	11,11,12	0.56	0	15,15,17	0.75	0
8	NAG	N	1	2,8	14,14,15	0.27	0	17,19,21	0.52	0
8	MAN	N	10	8	11,11,12	0.56	0	15,15,17	1.38	2 (13%)
8	NAG	N	2	8	14,14,15	0.30	0	17,19,21	0.44	0
8	BMA	N	3	8	11,11,12	0.80	0	15,15,17	1.02	1 (6%)
8	MAN	N	4	8	11,11,12	0.71	0	15,15,17	1.32	2 (13%)
8	MAN	N	5	8	11,11,12	0.84	1 (9%)	15,15,17	0.84	0
8	MAN	N	6	8	11,11,12	0.56	0	15,15,17	0.93	2 (13%)
8	MAN	N	7	8	11,11,12	0.93	1 (9%)	15,15,17	1.20	1 (6%)
8	MAN	N	8	8	11,11,12	0.73	0	15,15,17	1.33	2 (13%)
8	MAN	N	9	8	11,11,12	0.63	0	15,15,17	0.90	1 (6%)

In the following table, the Chirals column lists the number of chiral outliers, the number of chiral centers analysed, the number of these observed in the model and the number defined in the Chemical Component Dictionary. Similar counts are reported in the Torsion and Rings columns. '-' means no outliers of that kind were identified.

Mol	Type	Chain	Res	Link	Chirals	Torsions	Rings
6	NAG	F	1	6,1	-	1/6/23/26	0/1/1/1
6	NAG	F	2	6	-	1/6/23/26	0/1/1/1
6	NAG	G	1	6,1	-	1/6/23/26	0/1/1/1
6	NAG	G	2	6	-	0/6/23/26	0/1/1/1
7	NAG	I	1	1,7	-	2/6/23/26	0/1/1/1
7	NAG	I	2	7	-	0/6/23/26	0/1/1/1
7	BMA	I	3	7	-	2/2/19/22	0/1/1/1
6	NAG	J	1	6,2	-	0/6/23/26	0/1/1/1
6	NAG	J	2	6	-	0/6/23/26	0/1/1/1
6	NAG	K	1	6,3	-	1/6/23/26	0/1/1/1
6	NAG	K	2	6	-	2/6/23/26	0/1/1/1
7	NAG	M	1	1,7	-	4/6/23/26	0/1/1/1
7	NAG	M	2	7	-	0/6/23/26	0/1/1/1
7	BMA	M	3	7	-	2/2/19/22	0/1/1/1
8	NAG	N	1	2,8	-	2/6/23/26	0/1/1/1
8	MAN	N	10	8	-	2/2/19/22	0/1/1/1
8	NAG	N	2	8	-	0/6/23/26	0/1/1/1
8	BMA	N	3	8	-	0/2/19/22	0/1/1/1
8	MAN	N	4	8	-	2/2/19/22	0/1/1/1
8	MAN	N	5	8	-	2/2/19/22	0/1/1/1
8	MAN	N	6	8	-	2/2/19/22	0/1/1/1
8	MAN	N	7	8	-	0/2/19/22	0/1/1/1
8	MAN	N	8	8	-	0/2/19/22	0/1/1/1
8	MAN	N	9	8	-	0/2/19/22	0/1/1/1

All (2) bond length outliers are listed below:

Mol	Chain	Res	Type	Atoms	Z	Observed(Å)	Ideal(Å)
8	N	7	MAN	O5-C1	-2.65	1.39	1.43
8	N	5	MAN	O5-C1	-2.21	1.40	1.43

All (16) bond angle outliers are listed below:

Mol	Chain	Res	Type	Atoms	Z	Observed(°)	Ideal(°)
8	N	10	MAN	C1-O5-C5	4.22	117.85	112.19
8	N	8	MAN	C1-O5-C5	3.75	117.21	112.19
8	N	4	MAN	C1-O5-C5	3.58	116.99	112.19
6	K	2	NAG	C1-O5-C5	2.95	116.14	112.19
8	N	7	MAN	O2-C2-C3	-2.94	104.06	110.15
8	N	8	MAN	O2-C2-C3	-2.75	104.46	110.15
8	N	4	MAN	O2-C2-C3	-2.68	104.59	110.15

*Continued on next page...*

*Continued from previous page...*

Mol	Chain	Res	Type	Atoms	Z	Observed(°)	Ideal(°)
6	F	1	NAG	C1-O5-C5	2.48	115.52	112.19
6	F	2	NAG	C1-O5-C5	2.45	115.47	112.19
8	N	6	MAN	O2-C2-C3	-2.33	105.32	110.15
8	N	10	MAN	O2-C2-C3	-2.13	105.74	110.15
7	M	1	NAG	C1-O5-C5	2.09	114.99	112.19
8	N	3	BMA	C1-O5-C5	2.09	114.98	112.19
8	N	6	MAN	C1-O5-C5	2.08	114.97	112.19
7	I	2	NAG	C1-O5-C5	2.05	114.94	112.19
8	N	9	MAN	O2-C2-C3	-2.04	105.92	110.15

There are no chirality outliers.

All (26) torsion outliers are listed below:

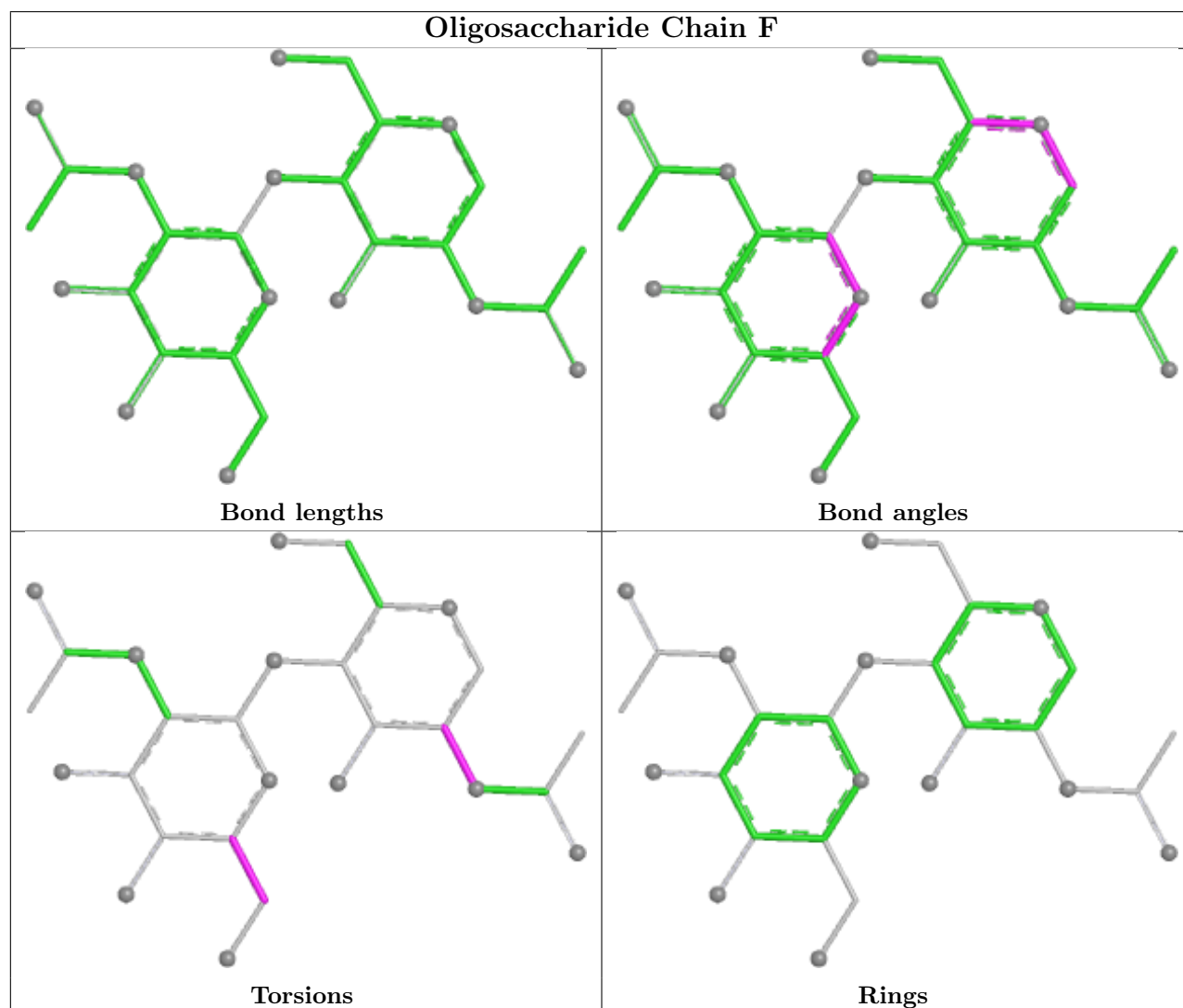
Mol	Chain	Res	Type	Atoms
6	F	1	NAG	C1-C2-N2-C7
7	M	1	NAG	O5-C5-C6-O6
7	M	3	BMA	O5-C5-C6-O6
8	N	6	MAN	O5-C5-C6-O6
8	N	10	MAN	O5-C5-C6-O6
8	N	6	MAN	C4-C5-C6-O6
7	M	3	BMA	C4-C5-C6-O6
8	N	10	MAN	C4-C5-C6-O6
7	M	1	NAG	C4-C5-C6-O6
7	I	3	BMA	O5-C5-C6-O6
6	K	2	NAG	C8-C7-N2-C2
6	K	2	NAG	O7-C7-N2-C2
7	I	1	NAG	C8-C7-N2-C2
7	I	1	NAG	O7-C7-N2-C2
8	N	4	MAN	O5-C5-C6-O6
8	N	4	MAN	C4-C5-C6-O6
8	N	5	MAN	O5-C5-C6-O6
6	F	2	NAG	O5-C5-C6-O6
7	I	3	BMA	C4-C5-C6-O6
6	G	1	NAG	C3-C2-N2-C7
7	M	1	NAG	C1-C2-N2-C7
8	N	1	NAG	C4-C5-C6-O6
7	M	1	NAG	C3-C2-N2-C7
8	N	1	NAG	O5-C5-C6-O6
8	N	5	MAN	C4-C5-C6-O6
6	K	1	NAG	O5-C5-C6-O6

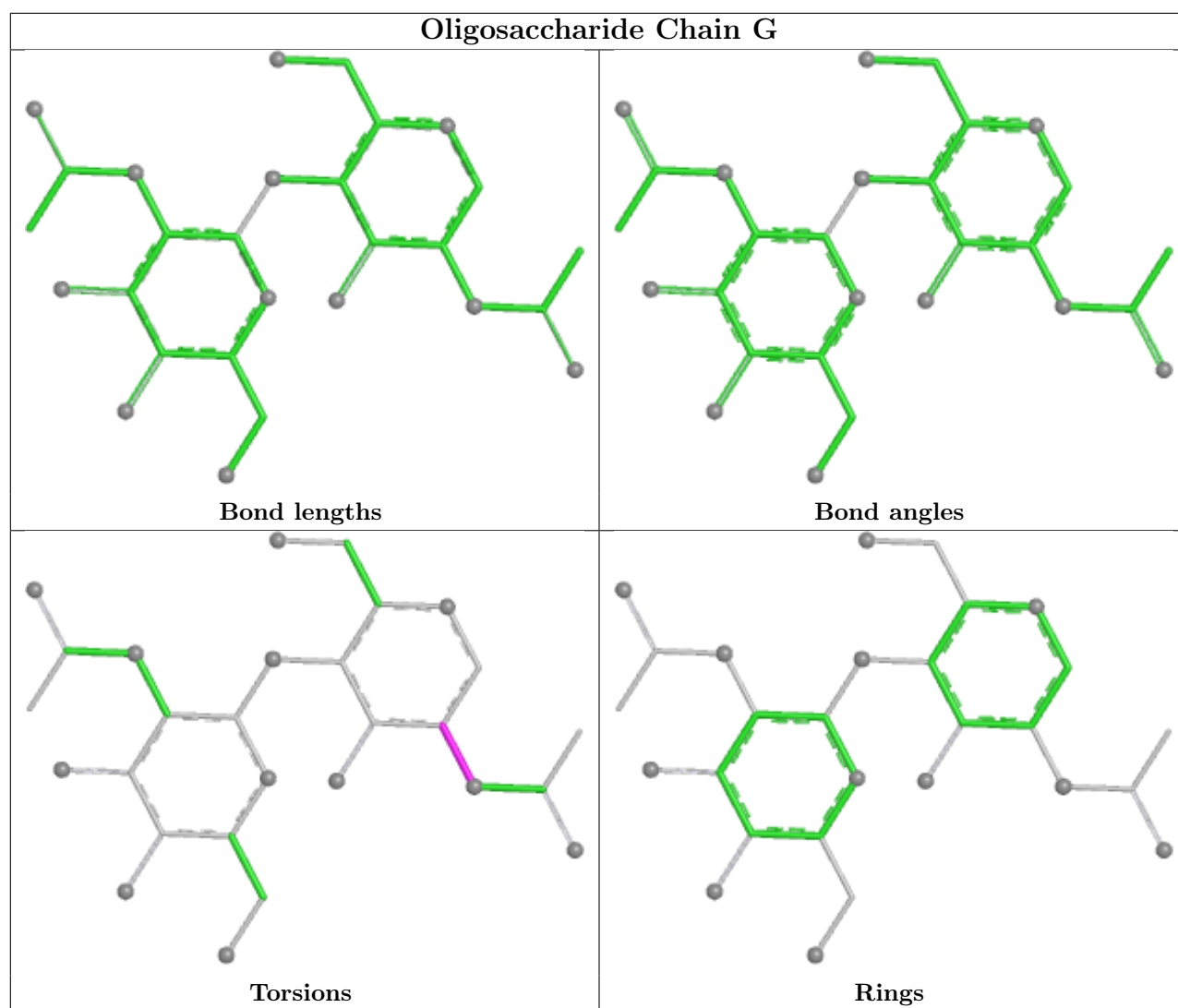
There are no ring outliers.

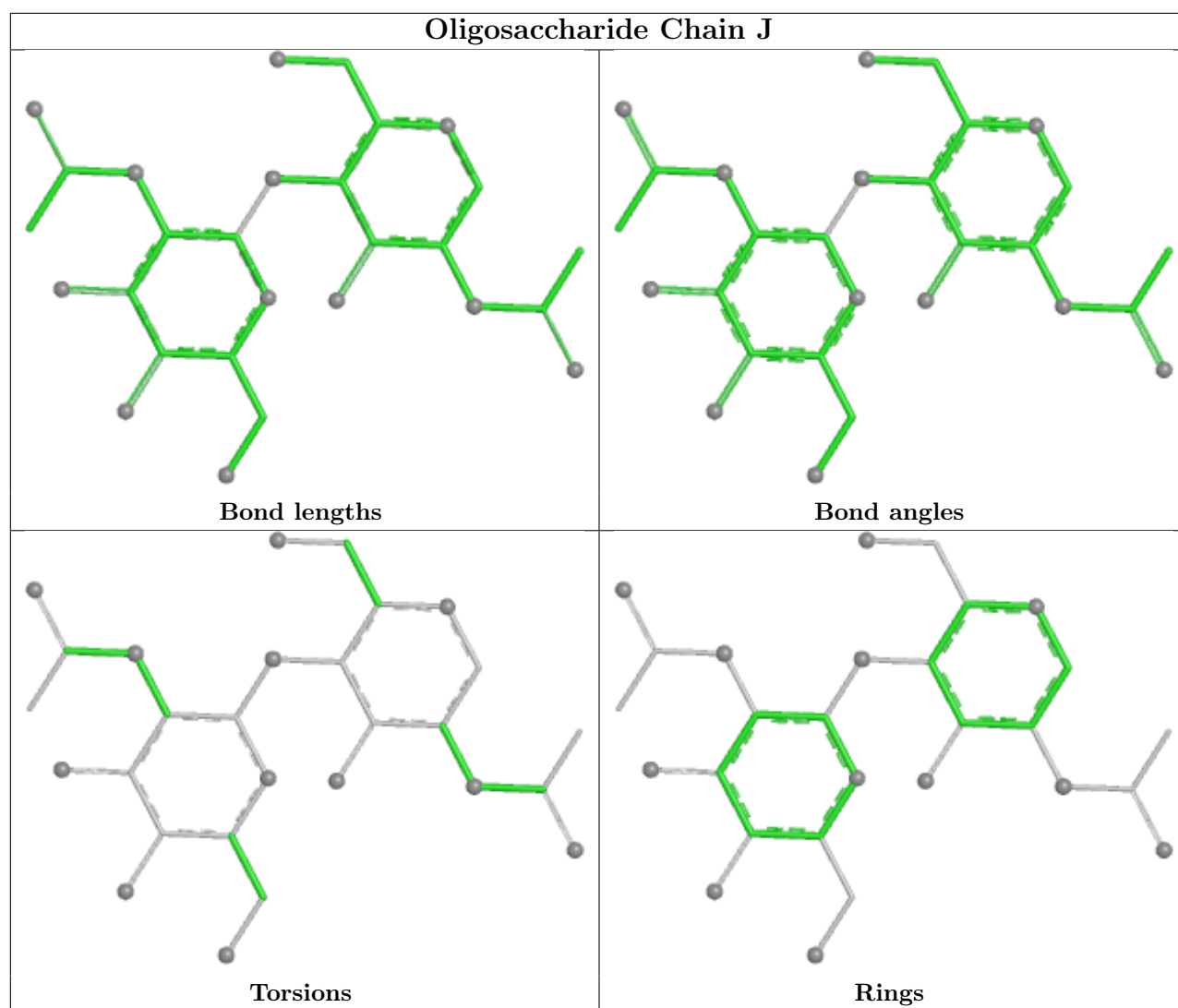
6 monomers are involved in 7 short contacts:

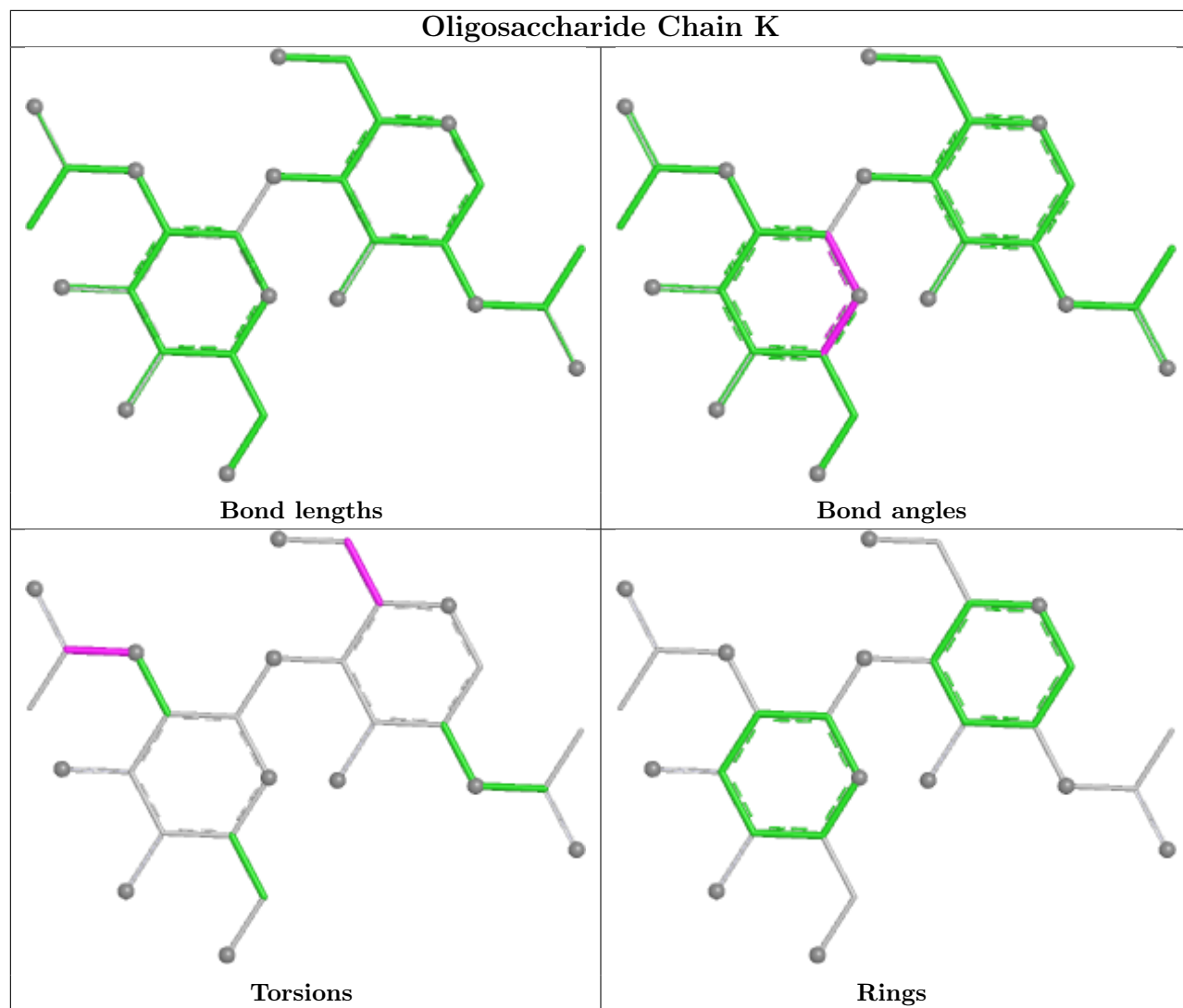
Mol	Chain	Res	Type	Clashes	Symm-Clashes
7	M	2	NAG	1	0
8	N	9	MAN	1	0
6	F	1	NAG	1	0
6	G	1	NAG	3	0
6	J	1	NAG	1	0
7	M	1	NAG	1	0

The following is a two-dimensional graphical depiction of Mogul quality analysis of bond lengths, bond angles, torsion angles, and ring geometry for oligosaccharide.

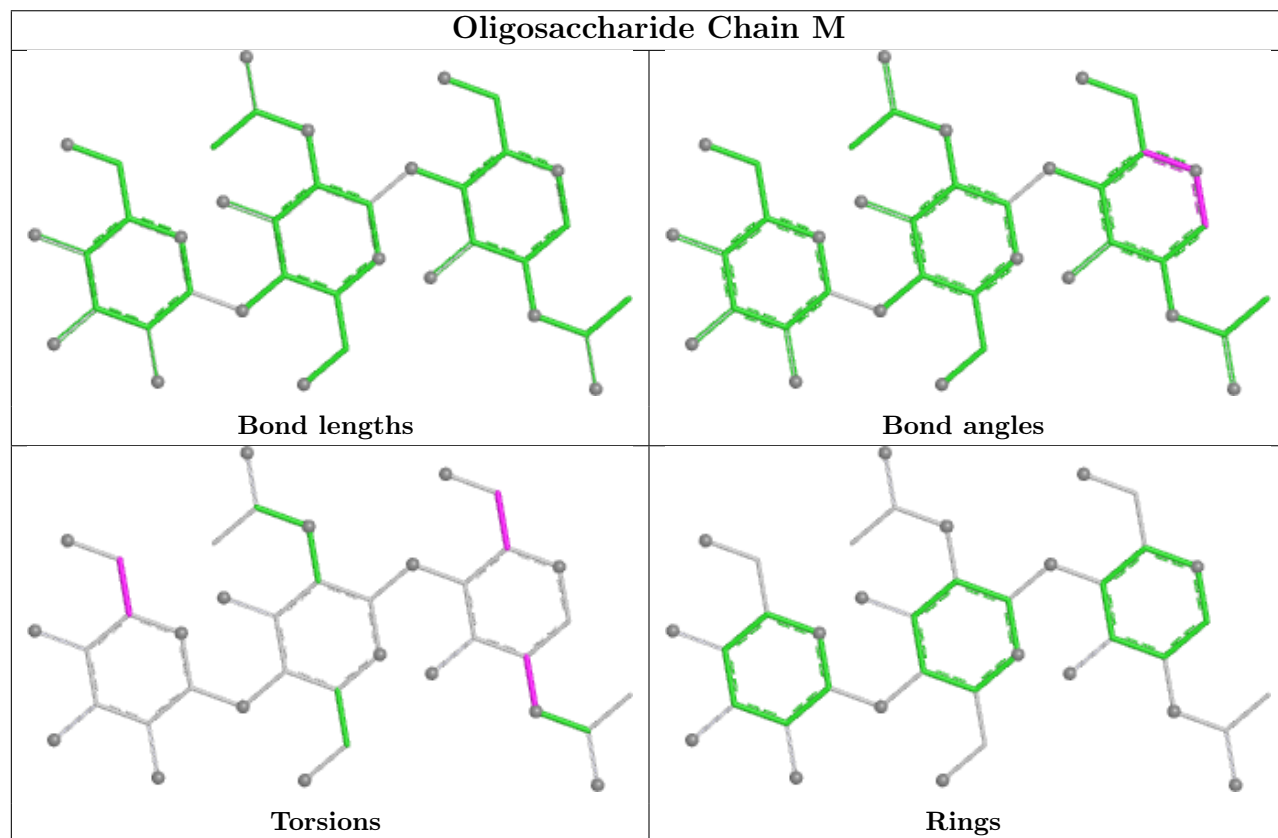
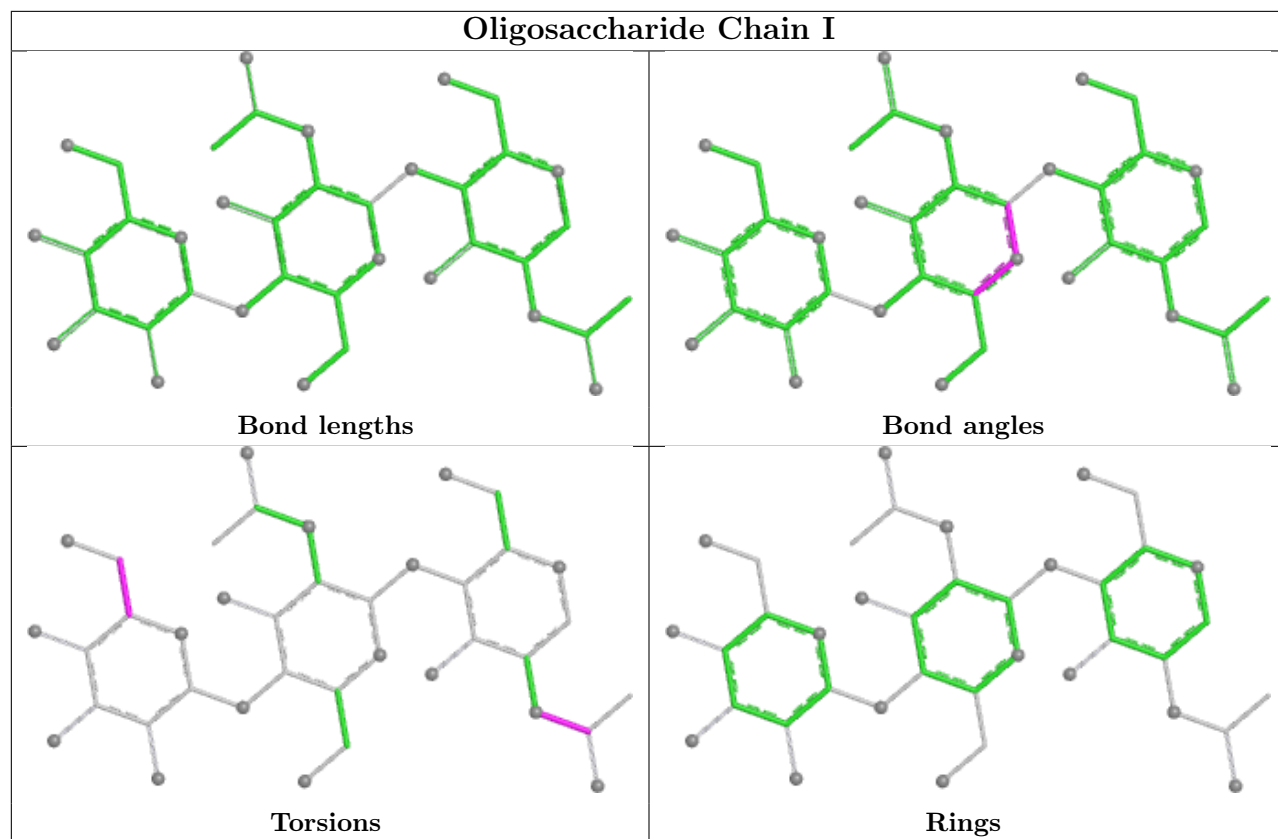


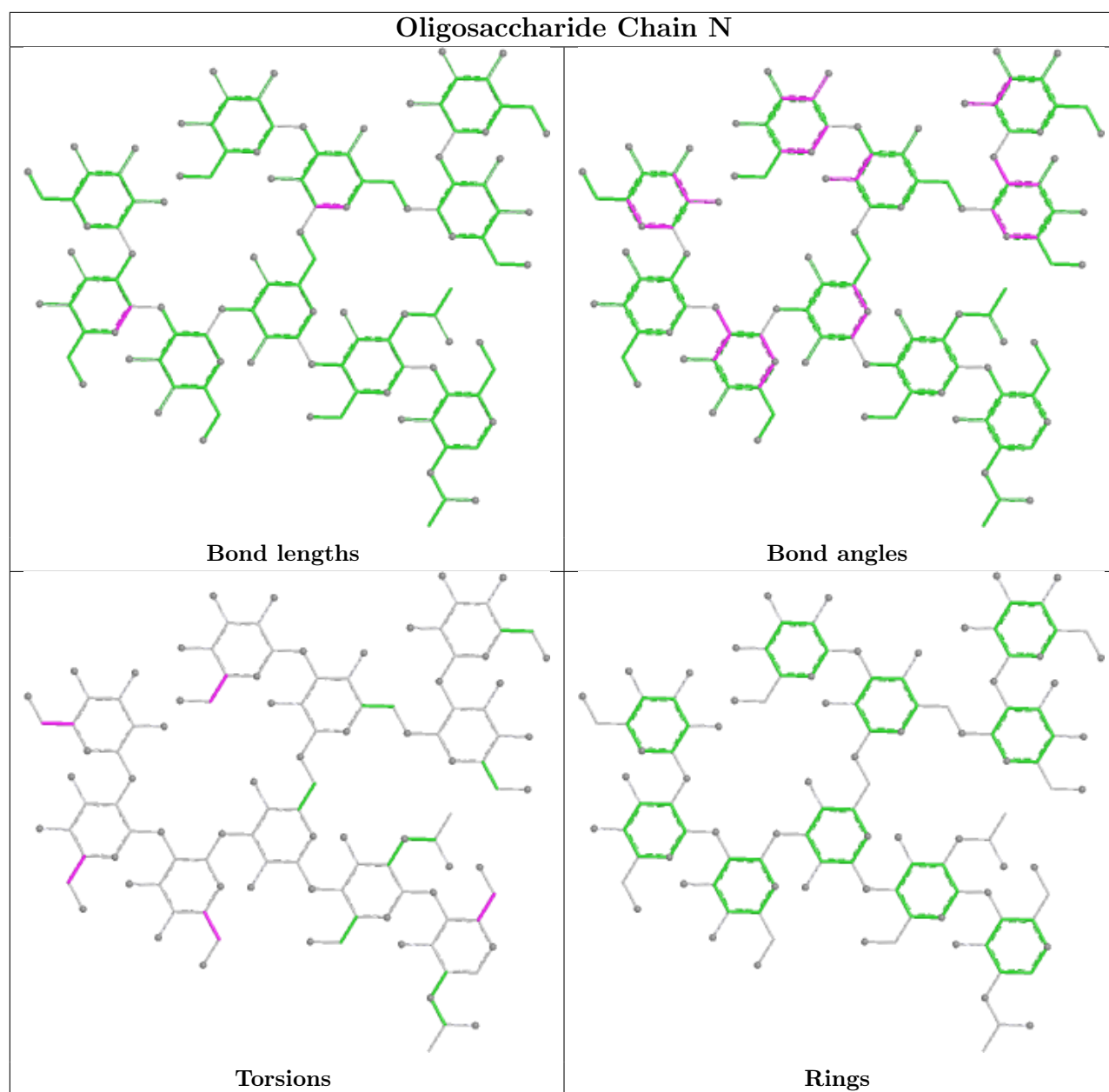












## 5.6 Ligand geometry [i](#)

There are no ligands in this entry.

## 5.7 Other polymers [i](#)

There are no such residues in this entry.

## 5.8 Polymer linkage issues [i](#)

There are no chain breaks in this entry.

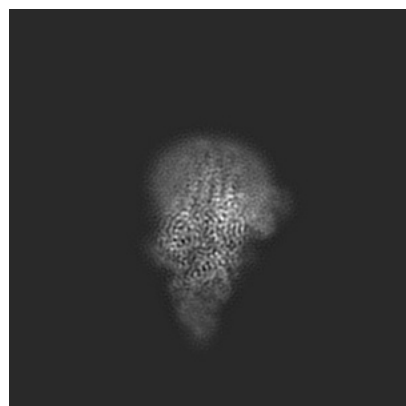
## 6 Map visualisation [i](#)

This section contains visualisations of the EMDB entry EMD-25583. These allow visual inspection of the internal detail of the map and identification of artifacts.

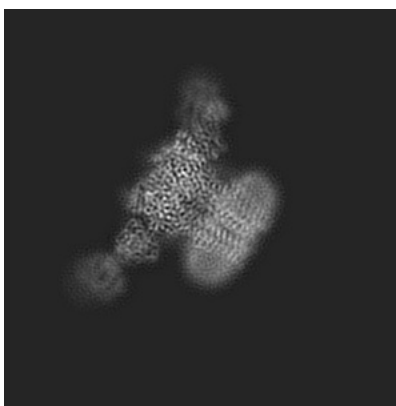
Images derived from a raw map, generated by summing the deposited half-maps, are presented below the corresponding image components of the primary map to allow further visual inspection and comparison with those of the primary map.

### 6.1 Orthogonal projections [i](#)

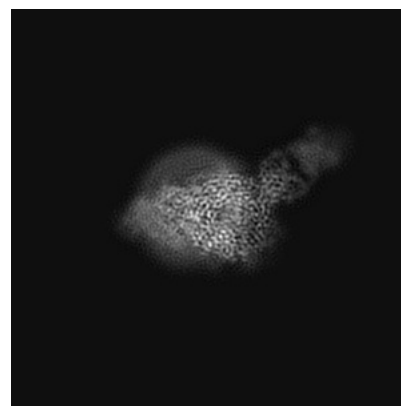
#### 6.1.1 Primary map



X

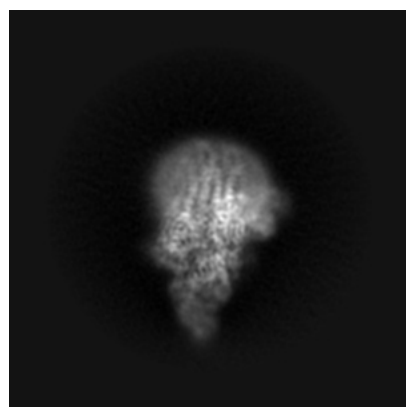


Y

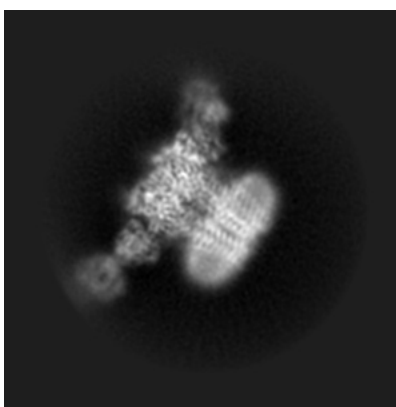


Z

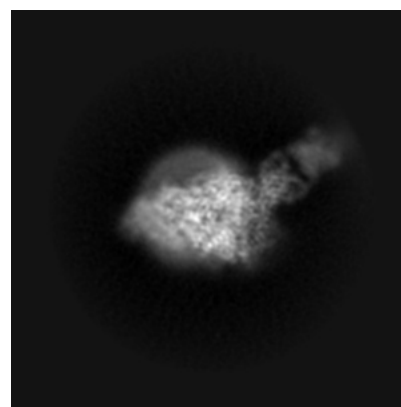
#### 6.1.2 Raw map



X



Y

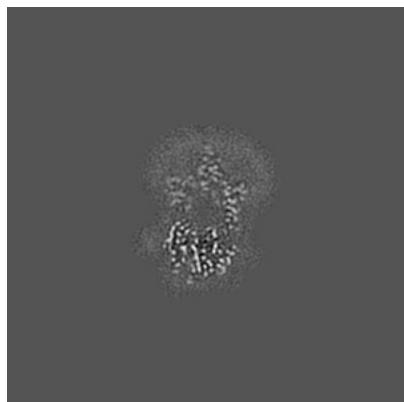


Z

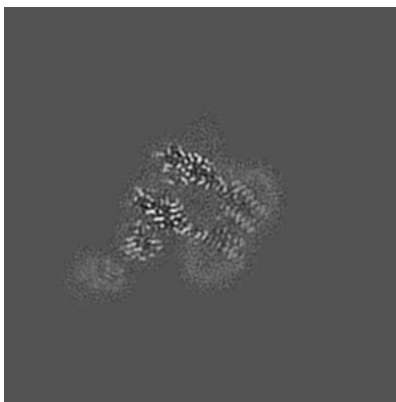
The images above show the map projected in three orthogonal directions.

## 6.2 Central slices [i](#)

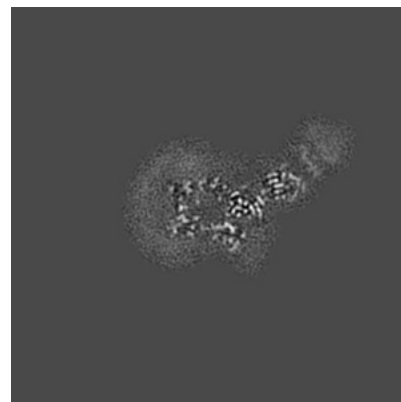
### 6.2.1 Primary map



X Index: 150

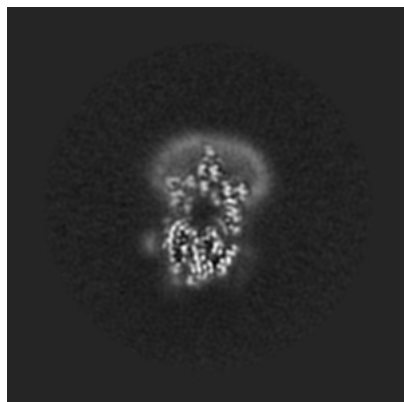


Y Index: 150

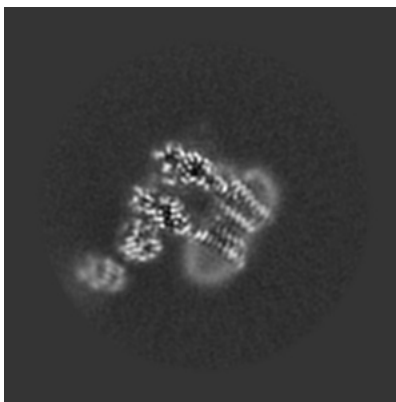


Z Index: 150

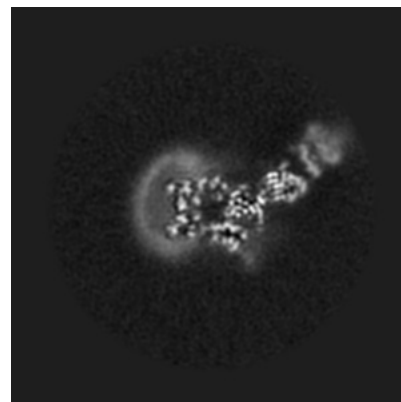
### 6.2.2 Raw map



X Index: 150



Y Index: 150

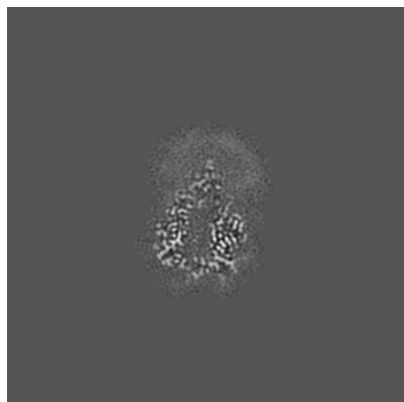


Z Index: 150

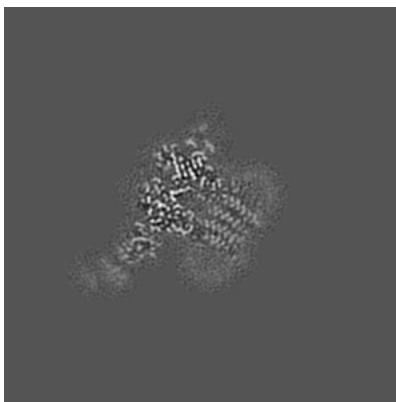
The images above show central slices of the map in three orthogonal directions.

## 6.3 Largest variance slices [i](#)

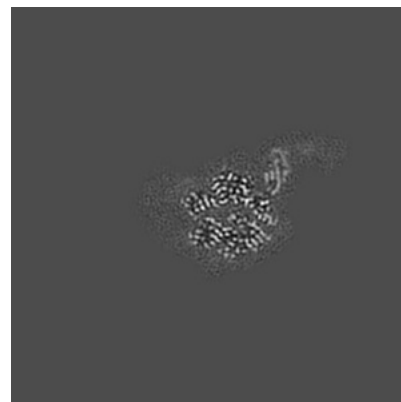
### 6.3.1 Primary map



X Index: 161

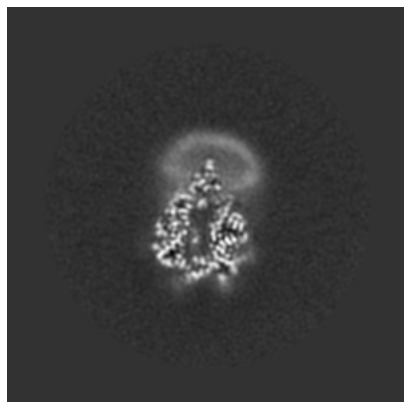


Y Index: 155

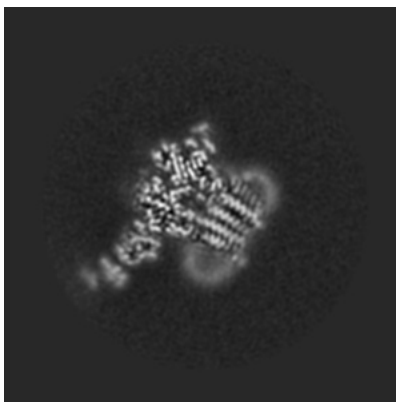


Z Index: 130

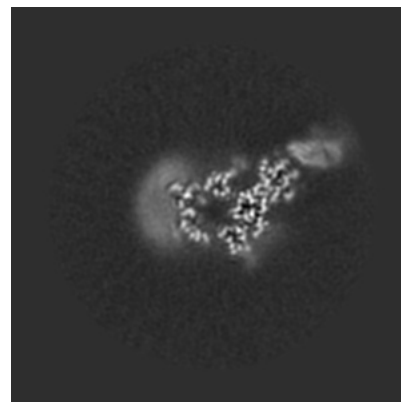
### 6.3.2 Raw map



X Index: 161



Y Index: 155

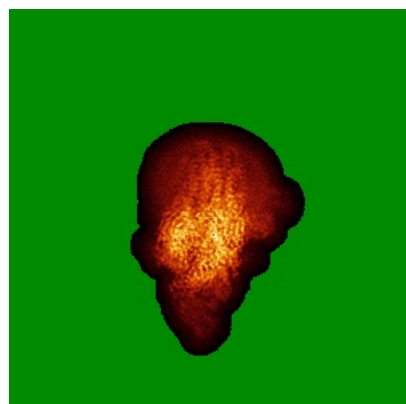


Z Index: 143

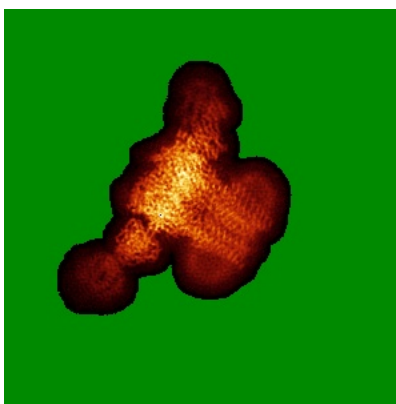
The images above show the largest variance slices of the map in three orthogonal directions.

## 6.4 Orthogonal standard-deviation projections (False-color) [i](#)

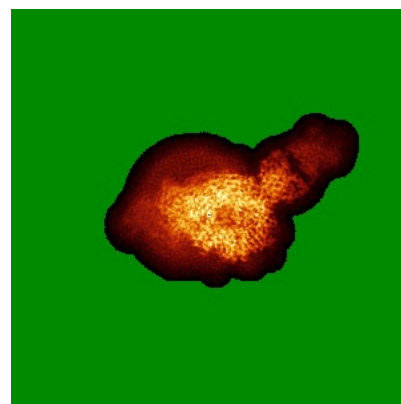
### 6.4.1 Primary map



X

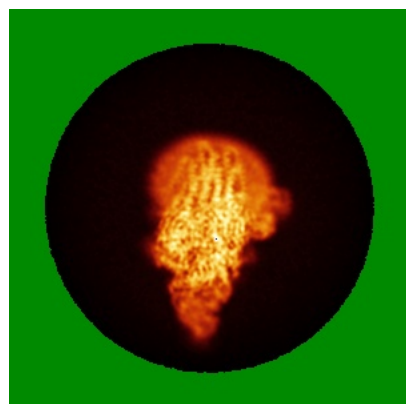


Y

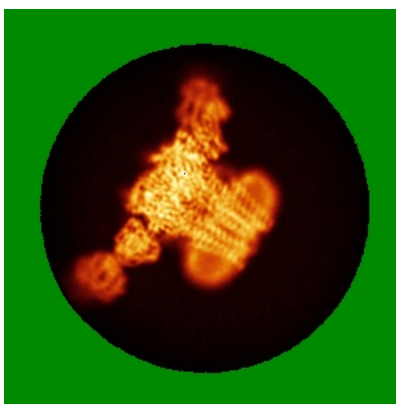


Z

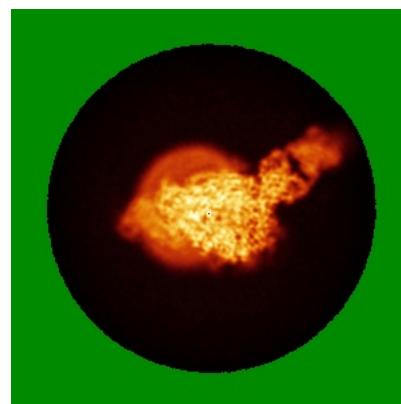
### 6.4.2 Raw map



X



Y

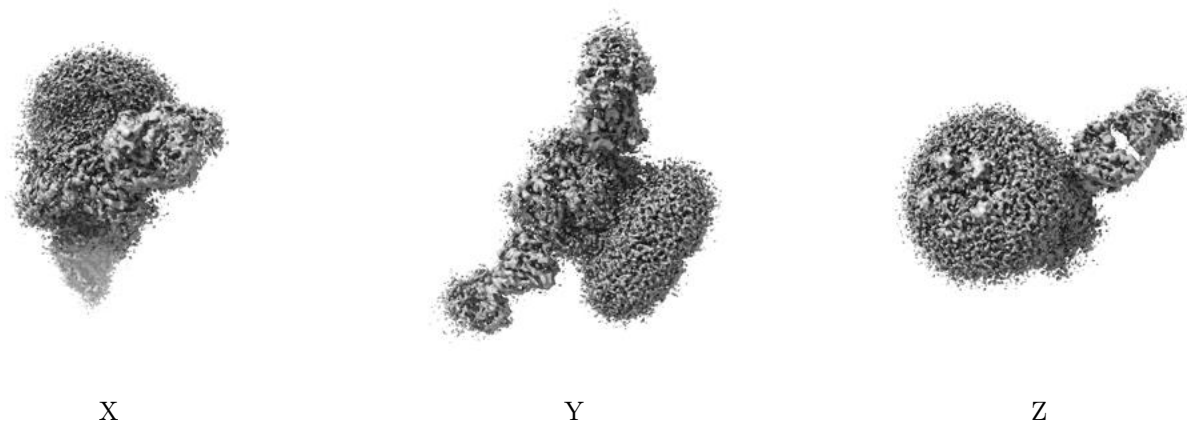


Z

The images above show the map standard deviation projections with false color in three orthogonal directions. Minimum values are shown in green, max in blue, and dark to light orange shades represent small to large values respectively.

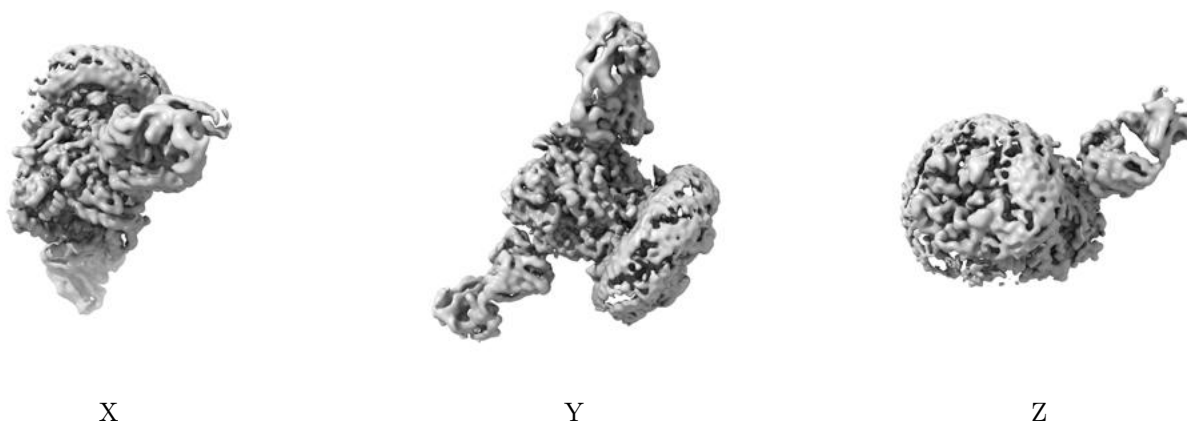
## 6.5 Orthogonal surface views [i](#)

### 6.5.1 Primary map



The images above show the 3D surface view of the map at the recommended contour level 0.013. These images, in conjunction with the slice images, may facilitate assessment of whether an appropriate contour level has been provided.

### 6.5.2 Raw map



These images show the 3D surface of the raw map. The raw map's contour level was selected so that its surface encloses the same volume as the primary map does at its recommended contour level.

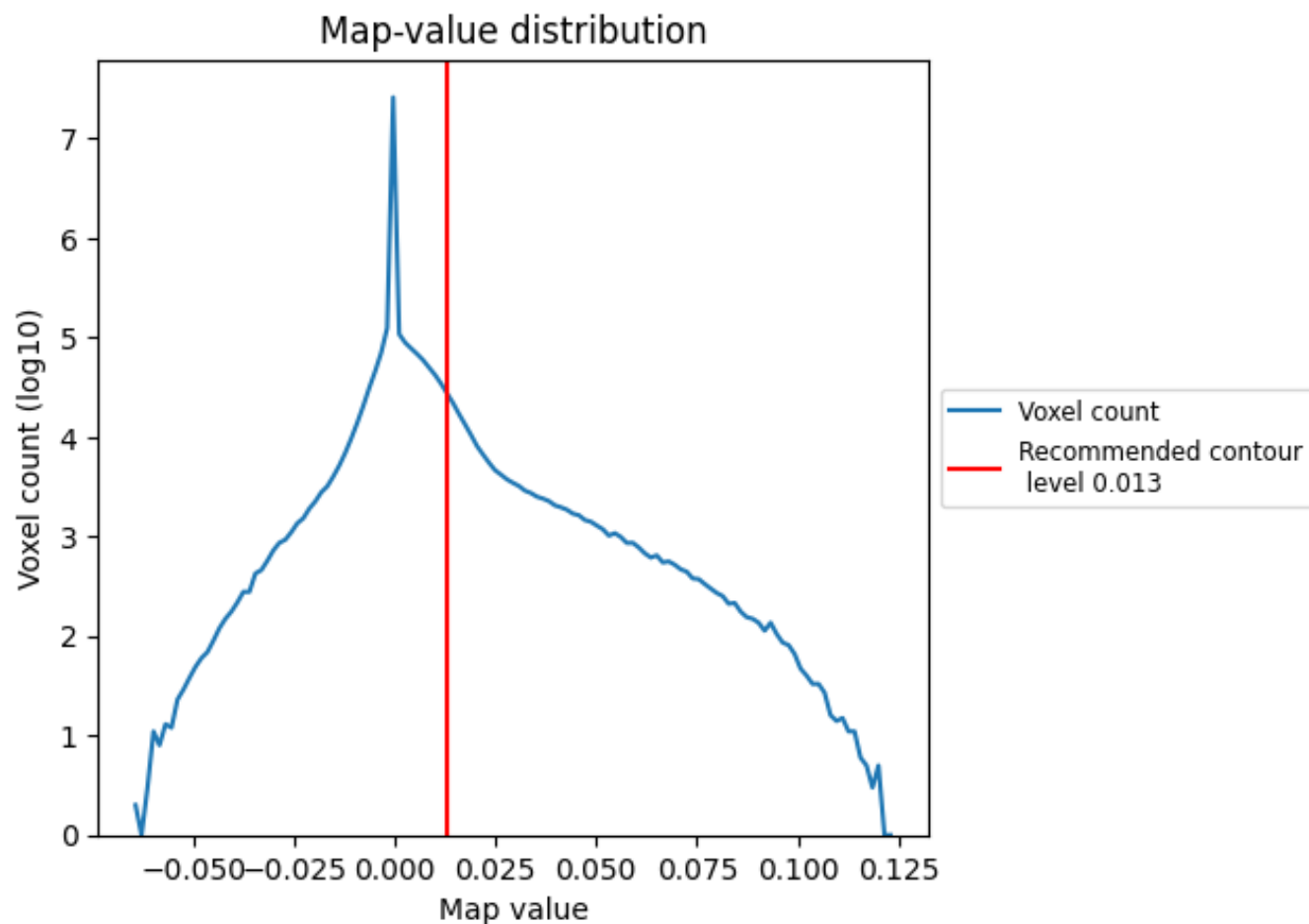
## 6.6 Mask visualisation [i](#)

This section was not generated. No masks/segmentation were deposited.

## 7 Map analysis [i](#)

This section contains the results of statistical analysis of the map.

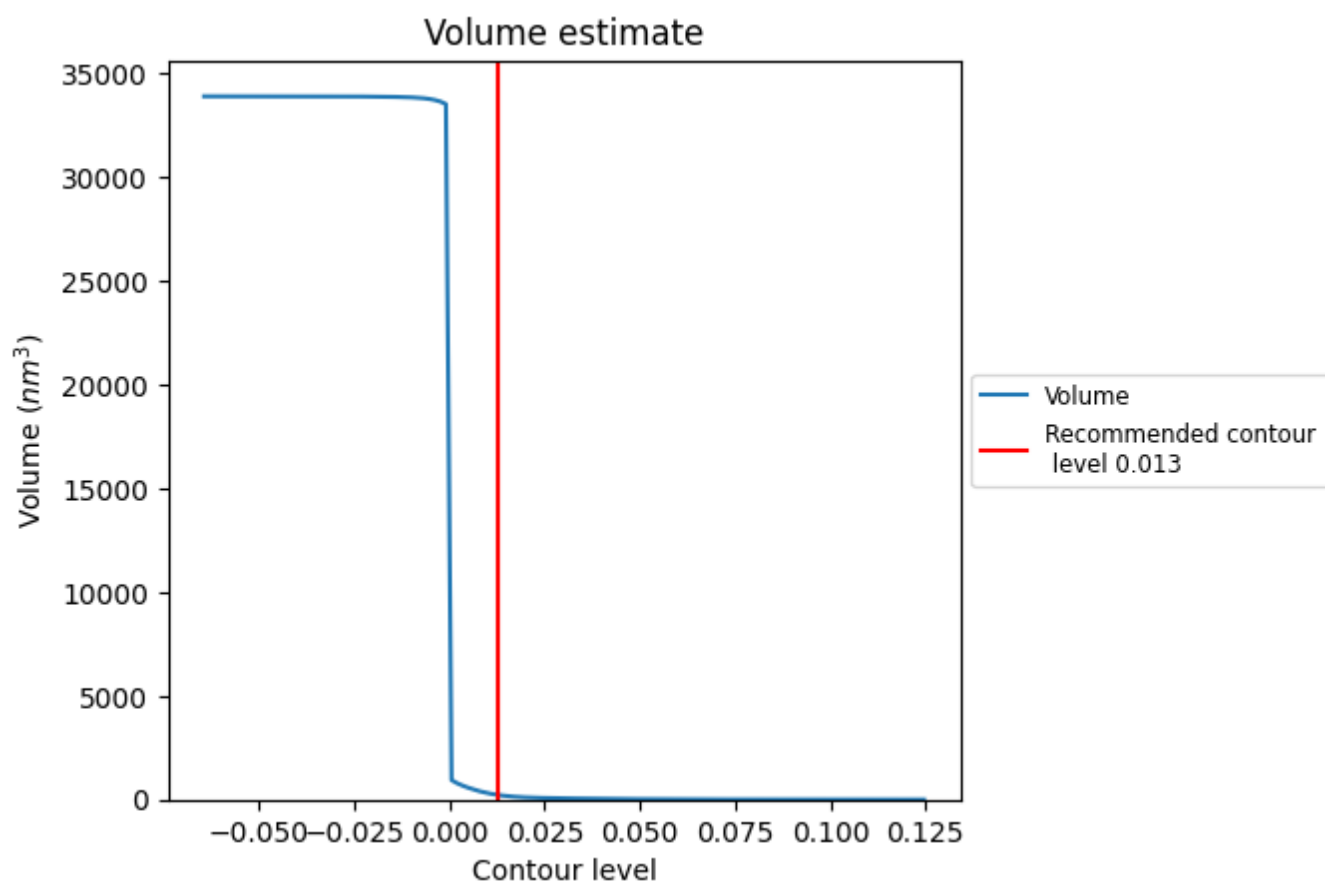
### 7.1 Map-value distribution [i](#)



The map-value distribution is plotted in 128 intervals along the x-axis. The y-axis is logarithmic. A spike in this graph at zero usually indicates that the volume has been masked.



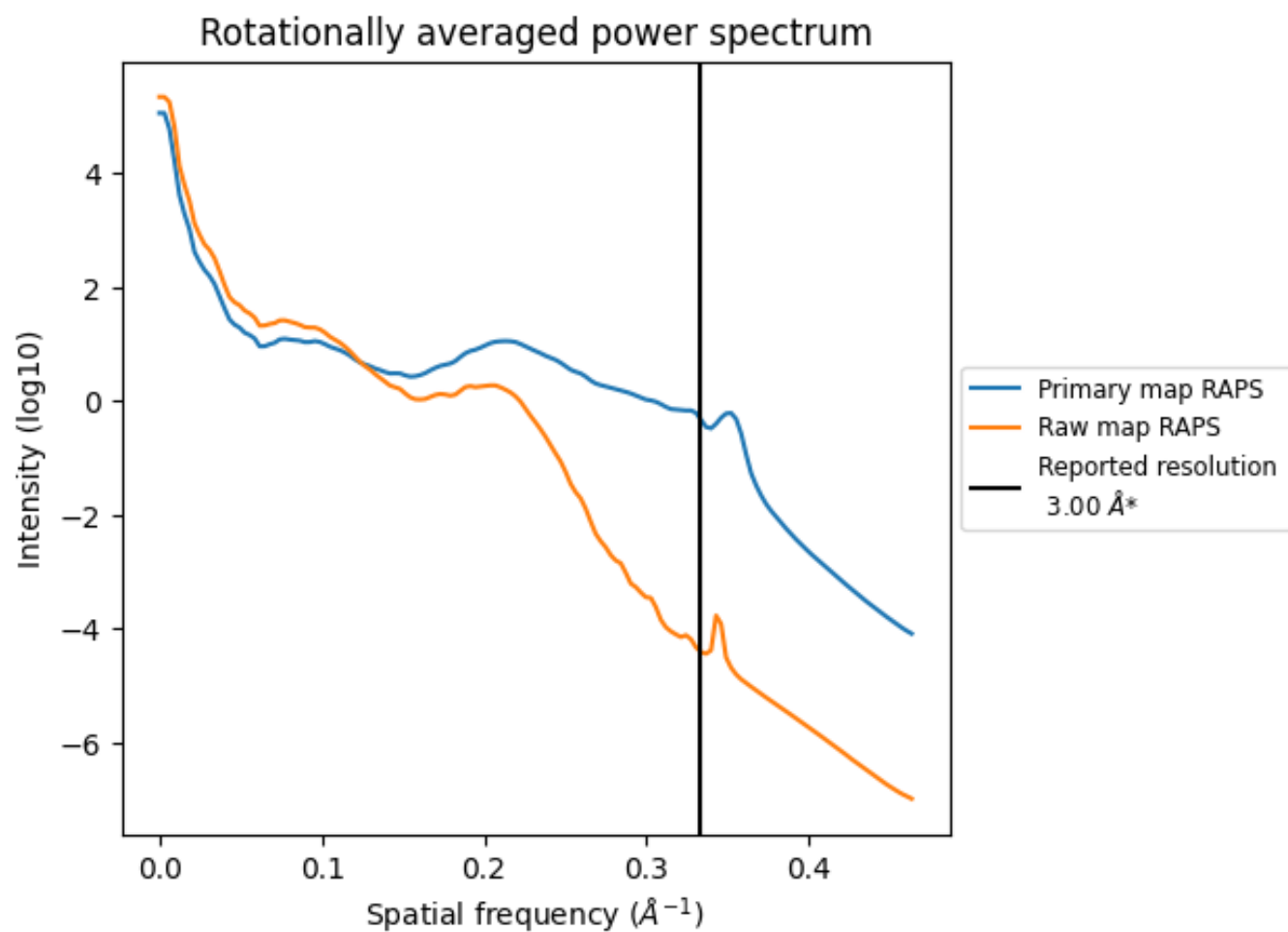
## 7.2 Volume estimate [i](#)



The volume at the recommended contour level is 217 nm<sup>3</sup>; this corresponds to an approximate mass of 196 kDa.

The volume estimate graph shows how the enclosed volume varies with the contour level. The recommended contour level is shown as a vertical line and the intersection between the line and the curve gives the volume of the enclosed surface at the given level.

### 7.3 Rotationally averaged power spectrum ⓘ

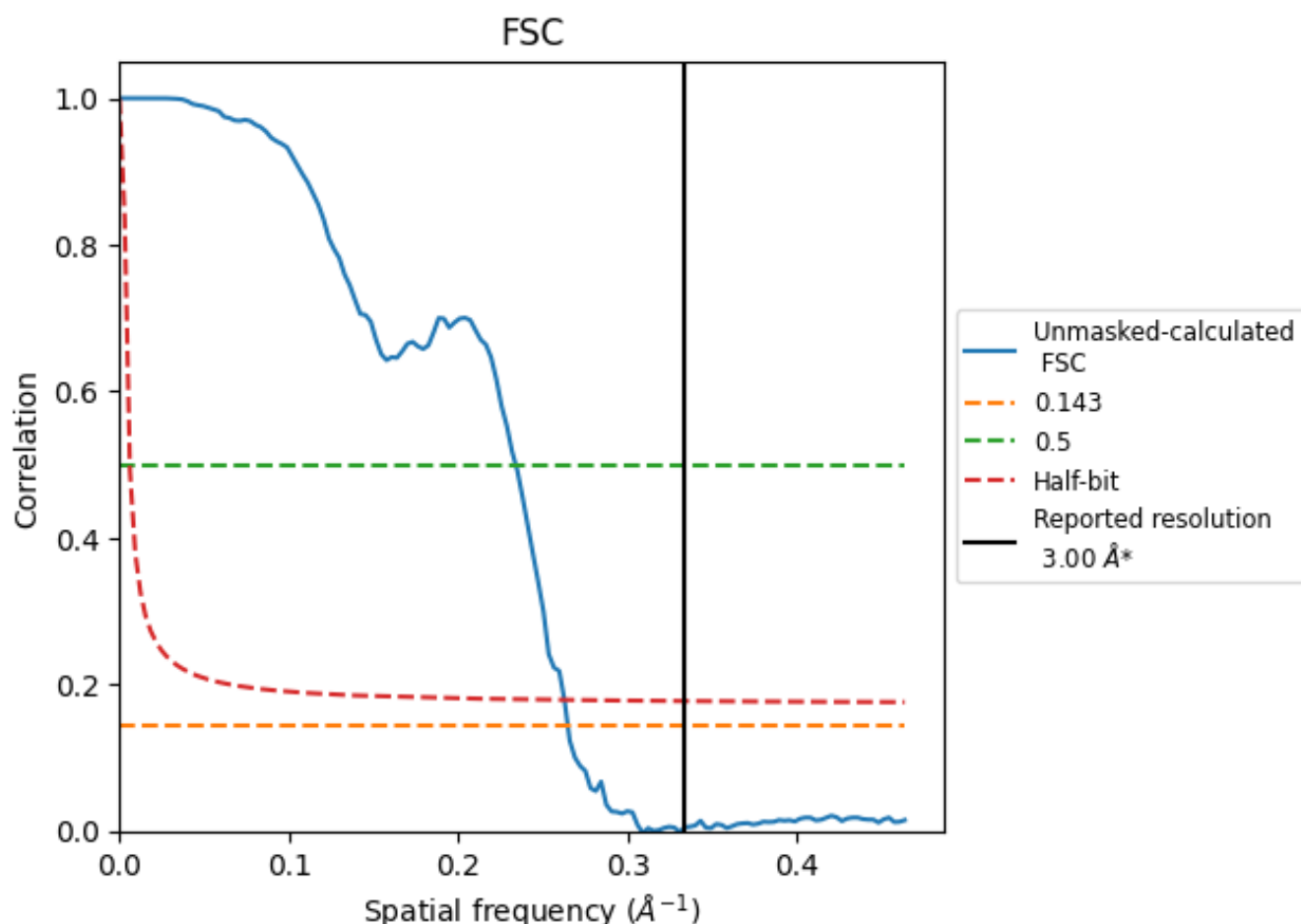


\*Reported resolution corresponds to spatial frequency of 0.333 Å<sup>-1</sup>

## 8 Fourier-Shell correlation [i](#)

Fourier-Shell Correlation (FSC) is the most commonly used method to estimate the resolution of single-particle and subtomogram-averaged maps. The shape of the curve depends on the imposed symmetry, mask and whether or not the two 3D reconstructions used were processed from a common reference. The reported resolution is shown as a black line. A curve is displayed for the half-bit criterion in addition to lines showing the 0.143 gold standard cut-off and 0.5 cut-off.

### 8.1 FSC [i](#)



\*Reported resolution corresponds to spatial frequency of 0.333 Å<sup>-1</sup>

## 8.2 Resolution estimates [i](#)

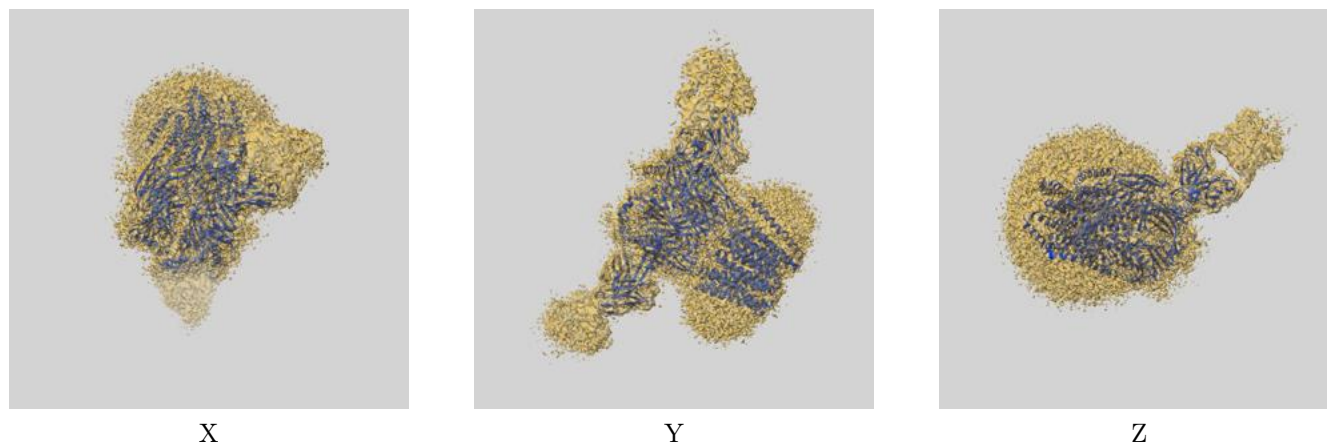
Resolution estimate (Å)	Estimation criterion (FSC cut-off)		
	0.143	0.5	Half-bit
Reported by author	3.00	-	-
Author-provided FSC curve	-	-	-
Unmasked-calculated*	3.78	4.28	3.81

\*Resolution estimate based on FSC curve calculated by comparison of deposited half-maps. The value from deposited half-maps intersecting FSC 0.143 CUT-OFF 3.78 differs from the reported value 3.0 by more than 10 %

## 9 Map-model fit [i](#)

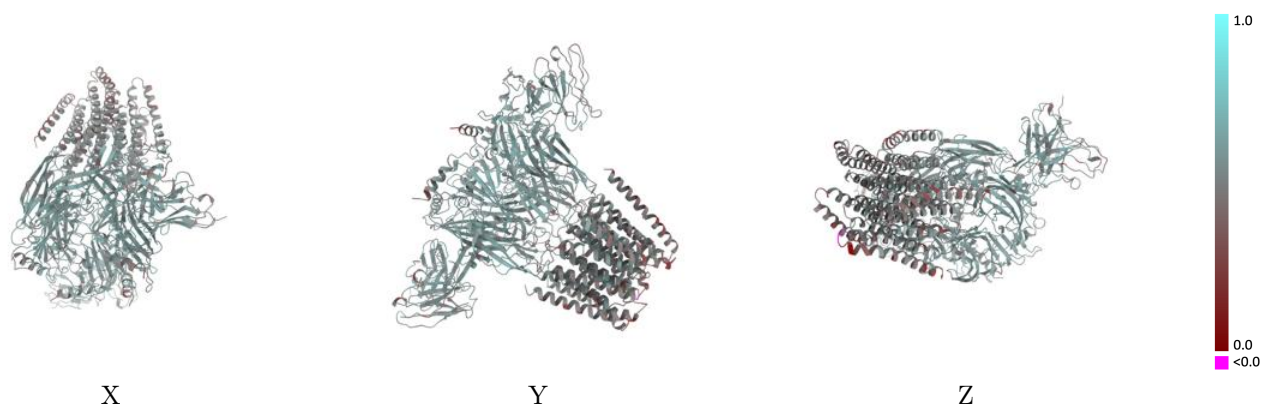
This section contains information regarding the fit between EMDB map EMD-25583 and PDB model 7T0W. Per-residue inclusion information can be found in [section 3](#) on [page 9](#).

### 9.1 Map-model overlay [i](#)



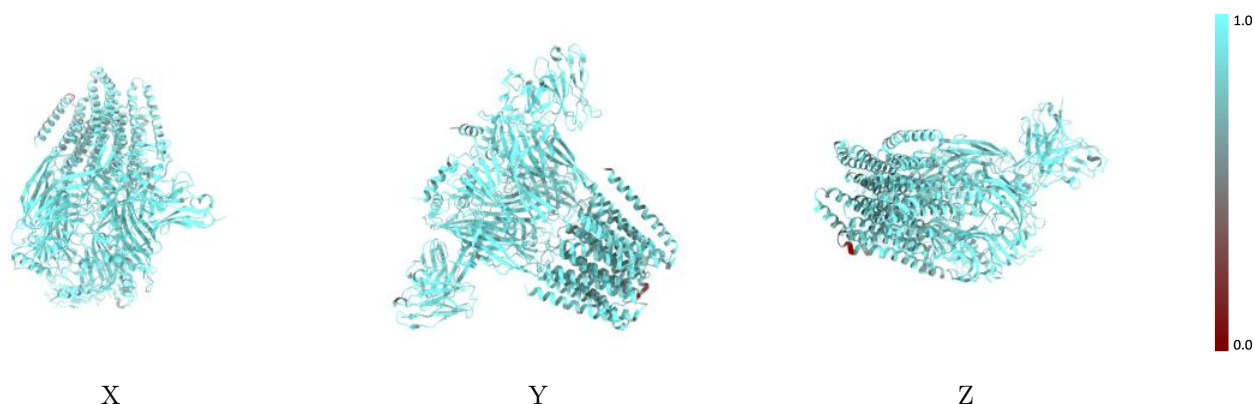
The images above show the 3D surface view of the map at the recommended contour level 0.013 at 50% transparency in yellow overlaid with a ribbon representation of the model coloured in blue. These images allow for the visual assessment of the quality of fit between the atomic model and the map.

## 9.2 Q-score mapped to coordinate model [i](#)



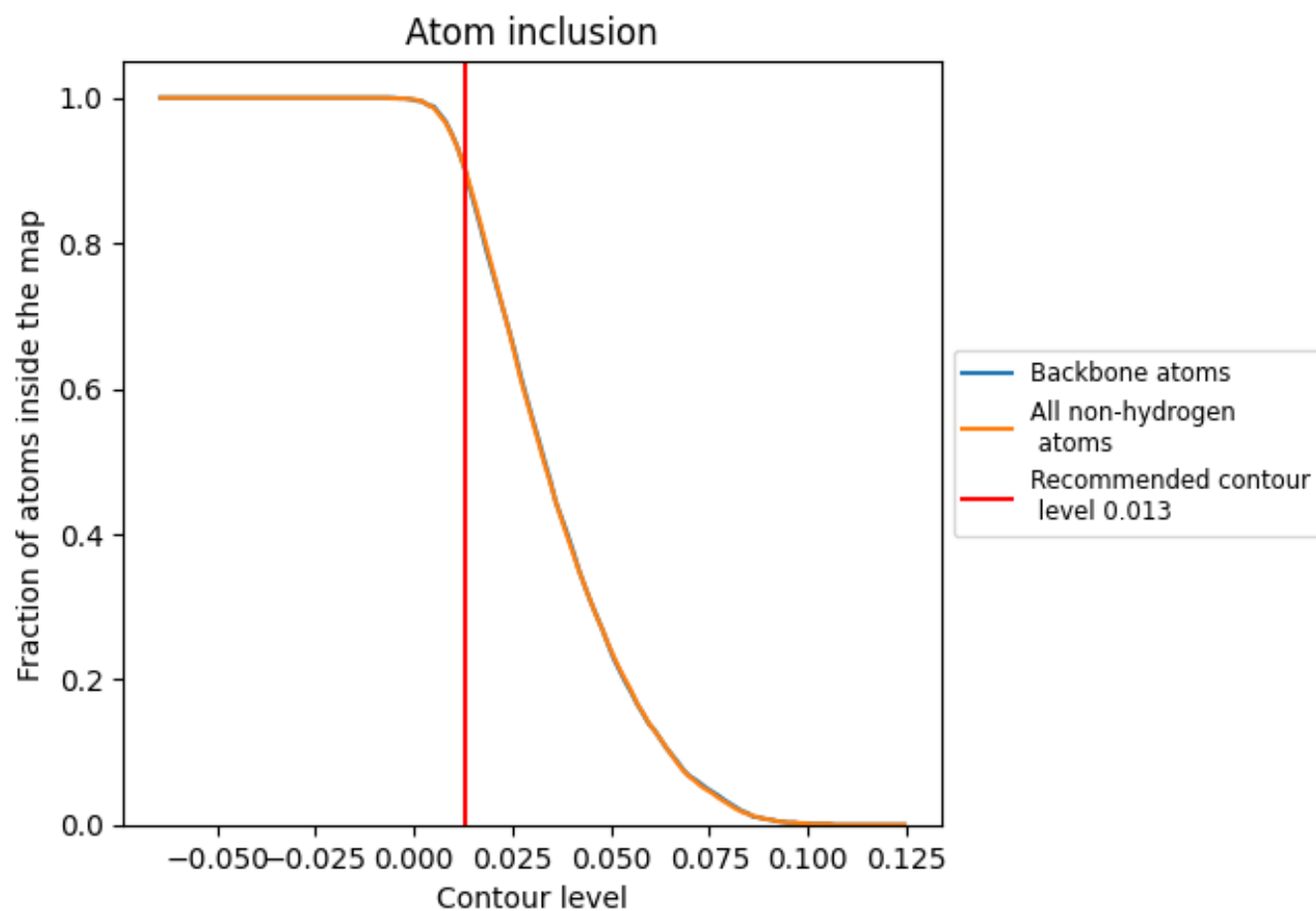
The images above show the model with each residue coloured according to its Q-score. This shows their resolvability in the map with higher Q-score values reflecting better resolvability. Please note: Q-score is calculating the resolvability of atoms, and thus high values are only expected at resolutions at which atoms can be resolved. Low Q-score values may therefore be expected for many entries.

## 9.3 Atom inclusion mapped to coordinate model [i](#)



The images above show the model with each residue coloured according to its atom inclusion. This shows to what extent they are inside the map at the recommended contour level (0.013).

## 9.4 Atom inclusion [i](#)



At the recommended contour level, 90% of all backbone atoms, 90% of all non-hydrogen atoms, are inside the map.

9.5 Map-model fit summary ⓘ

The table lists the average atom inclusion at the recommended contour level (0.013) and Q-score for the entire model and for each chain.

Chain	Atom inclusion	Q-score
All	<div></div> 0.9020	<div></div> 0.5270
A	<div></div> 0.9150	<div></div> 0.5310
B	<div></div> 0.9160	<div></div> 0.5320
C	<div></div> 0.9150	<div></div> 0.5320
D	<div></div> 0.9010	<div></div> 0.5240
E	<div></div> 0.8930	<div></div> 0.5170
F	<div></div> 0.8210	<div></div> 0.4320
G	<div></div> 0.8210	<div></div> 0.4020
H	<div></div> 0.9050	<div></div> 0.5140
H2	<div></div> 0.8970	<div></div> 0.5150
I	<div></div> 0.8970	<div></div> 0.4830
J	<div></div> 0.8570	<div></div> 0.5210
K	<div></div> 0.7860	<div></div> 0.3220
L	<div></div> 0.9360	<div></div> 0.5480
L2	<div></div> 0.9360	<div></div> 0.5520
M	<div></div> 0.8970	<div></div> 0.4820
N	<div></div> 0.9140	<div></div> 0.5300

1.0

0.0

<0.0