



Full wwPDB EM Validation Report ⓘ

Jun 20, 2024 – 01:43 AM JST

PDB ID : 7X2U
EMDB ID : EMD-32971
Title : Structure of a human NHE3-CHP1 complex in the autoinhibited state
Authors : Dong, Y.; Li, H.; Gao, Y.; Zhang, X.C.; Zhao, Y.
Deposited on : 2022-02-26
Resolution : 3.20 Å(reported)

This is a Full wwPDB EM Validation Report for a publicly released PDB entry.

We welcome your comments at validation@mail.wwpdb.org

A user guide is available at

<https://www.wwpdb.org/validation/2017/EMValidationReportHelp>

with specific help available everywhere you see the ⓘ symbol.

The types of validation reports are described at

<http://www.wwpdb.org/validation/2017/FAQs#types>.

The following versions of software and data (see [references ⓘ](#)) were used in the production of this report:

EMDB validation analysis : 0.0.1.dev92
Mogul : 1.8.5 (274361), CSD as541be (2020)
MolProbity : 4.02b-467
buster-report : 1.1.7 (2018)
Percentile statistics : 20191225.v01 (using entries in the PDB archive December 25th 2019)
MapQ : 1.9.13
Ideal geometry (proteins) : Engh & Huber (2001)
Ideal geometry (DNA, RNA) : Parkinson et al. (1996)
Validation Pipeline (wwPDB-VP) : 2.37.1

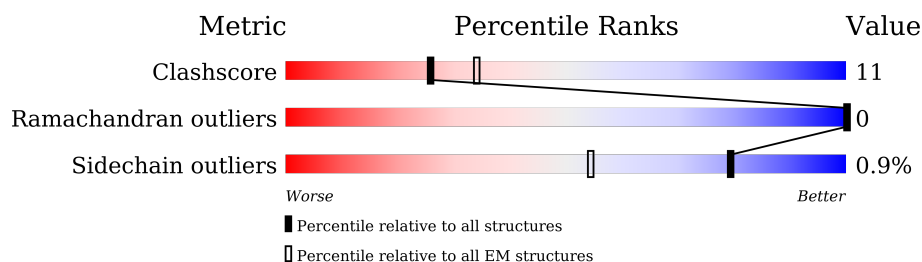
1 Overall quality at a glance

The following experimental techniques were used to determine the structure:

ELECTRON MICROSCOPY

The reported resolution of this entry is 3.20 Å.

Percentile scores (ranging between 0-100) for global validation metrics of the entry are shown in the following graphic. The table shows the number of entries on which the scores are based.



Metric	Whole archive (#Entries)	EM structures (#Entries)
Clashscore	158937	4297
Ramachandran outliers	154571	4023
Sidechain outliers	154315	3826

The table below summarises the geometric issues observed across the polymeric chains and their fit to the map. The red, orange, yellow and green segments of the bar indicate the fraction of residues that contain outliers for ≥ 3 , 2, 1 and 0 types of geometric quality criteria respectively. A grey segment represents the fraction of residues that are not modelled. The numeric value for each fraction is indicated below the corresponding segment, with a dot representing fractions $\leq 5\%$. The upper red bar (where present) indicates the fraction of residues that have poor fit to the EM map (all-atom inclusion $< 40\%$). The numeric value is given above the bar.

Mol	Chain	Length	Quality of chain
1	A	626	
1	B	626	
2	C	185	
2	D	185	

The following table lists non-polymeric compounds, carbohydrate monomers and non-standard residues in protein, DNA, RNA chains that are outliers for geometric or electron-density-fit criteria:

Mol	Type	Chain	Res	Chirality	Geometry	Clashes	Electron density
4	PGT	A	704	-	-	X	-

2 Entry composition

There are 4 unique types of molecules in this entry. The entry contains 11861 atoms, of which 0 are hydrogens and 0 are deuteriums.

In the tables below, the AltConf column contains the number of residues with at least one atom in alternate conformation and the Trace column contains the number of residues modelled with at most 2 atoms.

- Molecule 1 is a protein called Sodium/hydrogen exchanger 3.

Mol	Chain	Residues	Atoms					AltConf	Trace
1	A	541	Total	C	N	O	S	0	0
			4308	2851	704	739	14		
1	B	540	Total	C	N	O	S	0	0
			4300	2847	702	737	14		

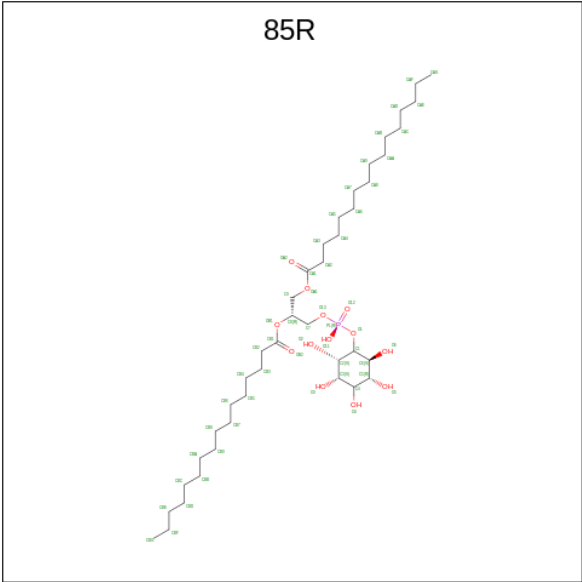
- Molecule 2 is a protein called Calcineurin B homologous protein 1.

Mol	Chain	Residues	Atoms					AltConf	Trace
2	C	185	Total	C	N	O	S	0	0
			1505	939	263	299	4		
2	D	185	Total	C	N	O	S	0	0
			1505	939	263	299	4		

There are 4 discrepancies between the modelled and reference sequences:

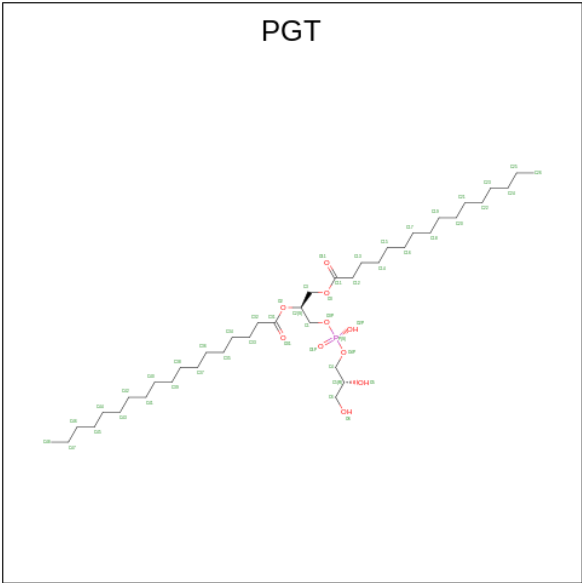
Chain	Residue	Modelled	Actual	Comment	Reference
C	170	ILE	ALA	conflict	UNP Q99653
C	171	ALA	ILE	conflict	UNP Q99653
D	170	ILE	ALA	conflict	UNP Q99653
D	171	ALA	ILE	conflict	UNP Q99653

- Molecule 3 is [(2 {R})-2-hexadecanoyloxy-3-[oxidanyl-[(2 {S},3 {S},5 {R},6 {S})-2,3,4,5,6-pentakis(oxidanyl)cyclohexyl]oxy-phosphoryl]oxy-propyl] hexadecanoate (three-letter code: 85R) (formula: C₄₁H₇₉O₁₃P) (labeled as "Ligand of Interest" by depositor).



Mol	Chain	Residues	Atoms				AltConf
3	A	1	Total	C	O	P	0
			55	41	13	1	
3	B	1	Total	C	O	P	0
			55	41	13	1	

- Molecule 4 is (1S)-2-{{[(2R)-2,3-DIHYDROXYPROPYL]OXY}(HYDROXY)PHOSPHORYL]OXY}-1-[(PALMITOYLOXY)METHYL]ETHYL STEARATE (three-letter code: PGT) (formula: C₄₀H₇₉O₁₀P).



Mol	Chain	Residues	Atoms		AltConf
4	A	1	Total	C	0
			15	15	

Continued on next page...

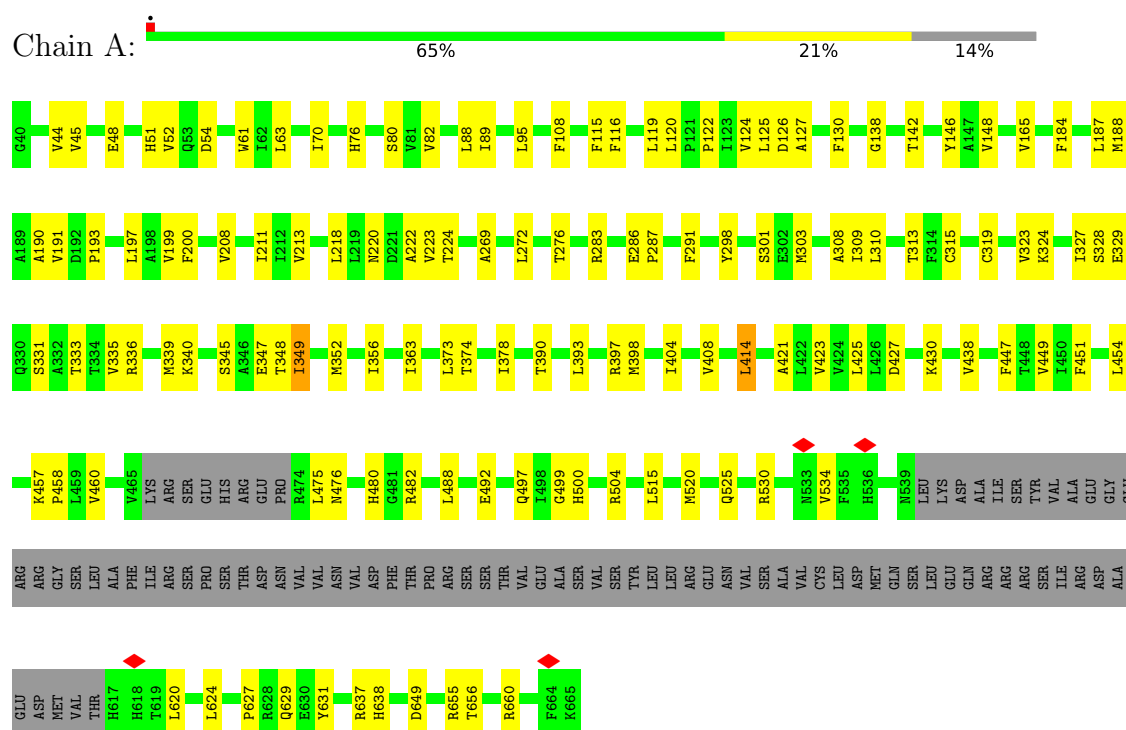
Continued from previous page...

Mol	Chain	Residues	Atoms	AltConf
4	A	1	Total C 10 10	0
4	A	1	Total C 18 18	0
4	A	1	Total C 10 10	0
4	A	1	Total C 15 15	0
4	B	1	Total C 16 16	0
4	B	1	Total C 9 9	0
4	B	1	Total C 10 10	0
4	B	1	Total C 15 15	0
4	B	1	Total C 15 15	0

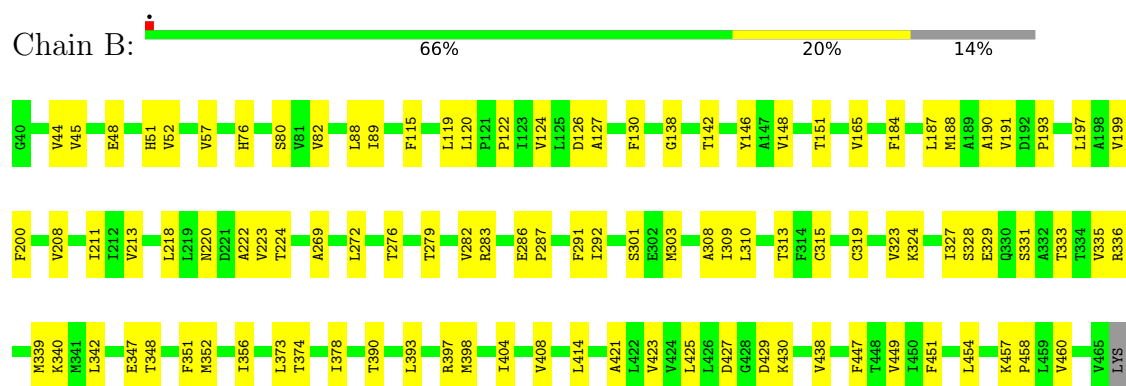
3 Residue-property plots

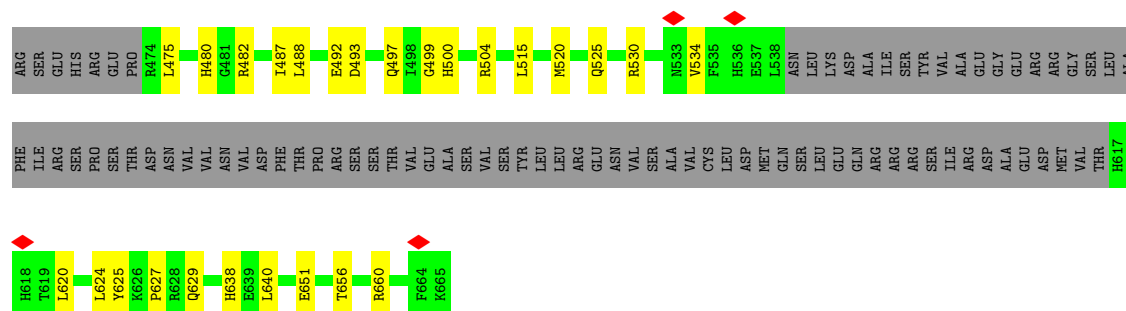
These plots are drawn for all protein, RNA, DNA and oligosaccharide chains in the entry. The first graphic for a chain summarises the proportions of the various outlier classes displayed in the second graphic. The second graphic shows the sequence view annotated by issues in geometry and atom inclusion in map density. Residues are color-coded according to the number of geometric quality criteria for which they contain at least one outlier: green = 0, yellow = 1, orange = 2 and red = 3 or more. A red diamond above a residue indicates a poor fit to the EM map for this residue (all-atom inclusion < 40%). Stretches of 2 or more consecutive residues without any outlier are shown as a green connector. Residues present in the sample, but not in the model, are shown in grey.

• Molecule 1: Sodium/hydrogen exchanger 3

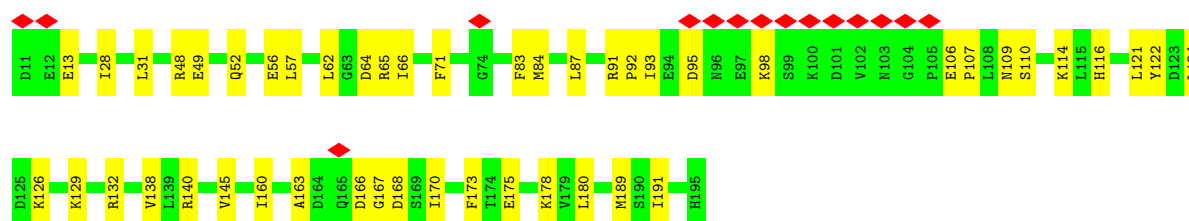
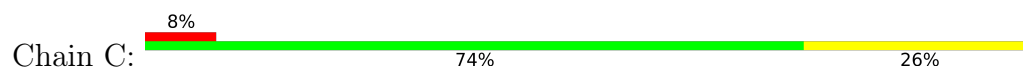


• Molecule 1: Sodium/hydrogen exchanger 3

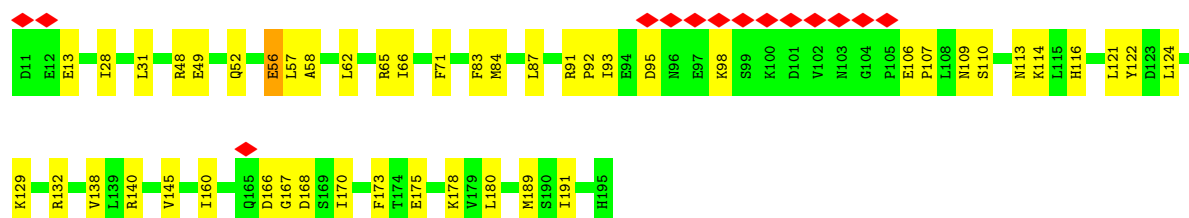
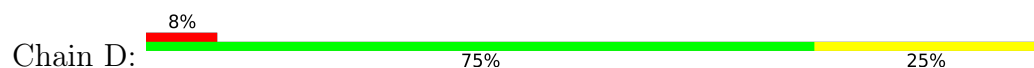




• Molecule 2: Calcineurin B homologous protein 1



• Molecule 2: Calcineurin B homologous protein 1



4 Experimental information

Property	Value	Source
EM reconstruction method	SINGLE PARTICLE	Depositor
Imposed symmetry	POINT, Not provided	
Number of particles used	37572	Depositor
Resolution determination method	FSC 0.143 CUT-OFF	Depositor
CTF correction method	PHASE FLIPPING ONLY	Depositor
Microscope	FEI TITAN KRIOS	Depositor
Voltage (kV)	300	Depositor
Electron dose ($e^-/\text{\AA}^2$)	60	Depositor
Minimum defocus (nm)	12000	Depositor
Maximum defocus (nm)	22000	Depositor
Magnification	Not provided	
Image detector	GATAN K2 SUMMIT (4k x 4k)	Depositor
Maximum map value	0.203	Depositor
Minimum map value	-0.124	Depositor
Average map value	0.000	Depositor
Map value standard deviation	0.005	Depositor
Recommended contour level	0.0197	Depositor
Map size (\AA)	256.0, 256.0, 256.0	wwPDB
Map dimensions	256, 256, 256	wwPDB
Map angles ($^\circ$)	90.0, 90.0, 90.0	wwPDB
Pixel spacing (\AA)	1.0, 1.0, 1.0	Depositor

5 Model quality [i](#)

5.1 Standard geometry [i](#)

Bond lengths and bond angles in the following residue types are not validated in this section: PGT, 85R

The Z score for a bond length (or angle) is the number of standard deviations the observed value is removed from the expected value. A bond length (or angle) with $|Z| > 5$ is considered an outlier worth inspection. RMSZ is the root-mean-square of all Z scores of the bond lengths (or angles).

Mol	Chain	Bond lengths		Bond angles	
		RMSZ	$\# Z > 5$	RMSZ	$\# Z > 5$
1	A	0.53	0/4412	0.50	1/5997 (0.0%)
1	B	0.53	0/4404	0.50	0/5986
2	C	0.36	0/1529	0.48	0/2053
2	D	0.36	0/1529	0.48	0/2053
All	All	0.49	0/11874	0.49	1/16089 (0.0%)

There are no bond length outliers.

All (1) bond angle outliers are listed below:

Mol	Chain	Res	Type	Atoms	Z	Observed(°)	Ideal(°)
1	A	349	ILE	O-C-N	-7.16	111.25	122.70

There are no chirality outliers.

There are no planarity outliers.

5.2 Too-close contacts [i](#)

In the following table, the Non-H and H(model) columns list the number of non-hydrogen atoms and hydrogen atoms in the chain respectively. The H(added) column lists the number of hydrogen atoms added and optimized by MolProbity. The Clashes column lists the number of clashes within the asymmetric unit, whereas Symm-Clashes lists symmetry-related clashes.

Mol	Chain	Non-H	H(model)	H(added)	Clashes	Symm-Clashes
1	A	4308	0	4422	105	0
1	B	4300	0	4416	92	0
2	C	1505	0	1466	37	0
2	D	1505	0	1466	33	0
3	A	55	0	0	2	0
3	B	55	0	0	2	0

Continued on next page...

Continued from previous page...

Mol	Chain	Non-H	H(model)	H(added)	Clashes	Symm-Clashes
4	A	68	0	125	33	0
4	B	65	0	119	17	0
All	All	11861	0	12014	269	0

The all-atom clashscore is defined as the number of clashes found per 1000 atoms (including hydrogen atoms). The all-atom clashscore for this structure is 11.

All (269) close contacts within the same asymmetric unit are listed below, sorted by their clash magnitude.

Atom-1	Atom-2	Interatomic distance (Å)	Clash overlap (Å)
4:A:704:PGT:C45	4:A:706:PGT:H451	1.76	1.15
4:A:704:PGT:H451	4:A:706:PGT:H451	1.34	1.02
4:A:704:PGT:H322	4:B:701:PGT:H472	0.99	0.99
4:A:704:PGT:H322	4:B:701:PGT:C47	1.92	0.99
4:A:704:PGT:C32	4:B:701:PGT:H472	1.94	0.97
4:B:701:PGT:H441	4:B:706:PGT:H462	1.52	0.89
4:B:701:PGT:H441	4:B:706:PGT:C46	2.07	0.83
4:A:704:PGT:H402	4:A:705:PGT:C11	2.11	0.80
2:D:65:ARG:NH1	2:D:121:LEU:O	2.17	0.77
2:C:65:ARG:NH1	2:C:121:LEU:O	2.18	0.77
1:B:146:TYR:HH	1:B:390:THR:HG1	1.32	0.76
1:B:291:PHE:HB3	4:B:701:PGT:H462	1.69	0.74
4:A:704:PGT:H451	4:A:706:PGT:C45	2.17	0.74
4:A:704:PGT:H452	4:A:706:PGT:H451	1.68	0.73
1:B:48:GLU:HG3	1:B:51:HIS:HB2	1.72	0.72
1:A:48:GLU:HG3	1:A:51:HIS:HB2	1.72	0.71
1:A:146:TYR:HH	1:A:390:THR:HG1	1.31	0.71
2:C:140:ARG:HH12	2:C:145:VAL:HA	1.56	0.70
2:D:140:ARG:HH12	2:D:145:VAL:HA	1.56	0.69
2:D:93:ILE:HD11	2:D:110:SER:HA	1.75	0.69
2:C:93:ILE:HD11	2:C:110:SER:HA	1.75	0.68
1:B:120:LEU:HD21	1:B:309:ILE:HD11	1.75	0.68
1:A:120:LEU:HD21	1:A:309:ILE:HD11	1.75	0.67
1:A:347:GLU:OE2	1:A:637:ARG:NH1	2.28	0.67
2:C:91:ARG:HB2	2:C:109:ASN:HD22	1.61	0.66
2:D:91:ARG:HB2	2:D:109:ASN:HD22	1.61	0.66
1:A:475:LEU:HD12	1:A:620:LEU:HD22	1.78	0.66
1:A:89:ILE:HD12	1:A:449:VAL:HG11	1.79	0.65
1:B:190:ALA:HB2	1:B:224:THR:HG21	1.78	0.65
1:B:89:ILE:HD12	1:B:449:VAL:HG11	1.79	0.64
1:A:190:ALA:HB2	1:A:224:THR:HG21	1.78	0.64

Continued on next page...

Continued from previous page...

Atom-1	Atom-2	Interatomic distance (Å)	Clash overlap (Å)
4:A:705:PGT:H132	4:B:704:PGT:H141	1.79	0.64
1:A:345:SER:HB2	4:A:704:PGT:H351	1.80	0.63
1:B:475:LEU:HD12	1:B:620:LEU:HD22	1.78	0.63
4:A:705:PGT:C13	4:B:704:PGT:H141	2.29	0.63
1:B:520:MET:O	1:B:525:GLN:NE2	2.31	0.62
1:B:193:PRO:HB2	1:B:213:VAL:HG13	1.81	0.62
1:A:193:PRO:HB2	1:A:213:VAL:HG13	1.81	0.62
1:A:488:LEU:HD13	2:C:189:MET:HA	1.83	0.61
1:A:520:MET:O	1:A:525:GLN:NE2	2.31	0.61
1:A:291:PHE:HB3	4:A:706:PGT:H472	1.82	0.61
1:B:57:VAL:HG21	4:B:705:PGT:H402	1.83	0.60
1:A:191:VAL:HG23	1:A:193:PRO:HD3	1.84	0.60
1:A:88:LEU:HD11	1:A:638:HIS:CE1	2.37	0.60
1:B:88:LEU:HD11	1:B:638:HIS:CE1	2.37	0.59
1:B:283:ARG:HD2	1:B:328:SER:HB3	1.85	0.58
1:A:122:PRO:HG3	4:A:704:PGT:H441	1.84	0.58
1:A:345:SER:CB	4:A:704:PGT:H351	2.33	0.58
1:B:191:VAL:HG23	1:B:193:PRO:HD3	1.84	0.58
1:A:283:ARG:HD2	1:A:328:SER:HB3	1.85	0.57
2:D:95:ASP:HA	2:D:98:LYS:HE2	1.87	0.57
1:B:122:PRO:HG2	4:B:706:PGT:H412	1.85	0.57
1:A:187:LEU:HD13	1:A:423:VAL:HG22	1.86	0.57
2:C:66:ILE:HD13	2:C:121:LEU:HD21	1.87	0.57
1:B:323:VAL:HG13	1:B:327:ILE:HD12	1.87	0.57
1:A:287:PRO:HD3	1:A:331:SER:OG	2.06	0.56
1:A:660:ARG:CZ	2:C:52:GLN:HG2	2.35	0.56
1:B:287:PRO:HD3	1:B:331:SER:OG	2.06	0.56
1:A:323:VAL:HG13	1:A:327:ILE:HD12	1.87	0.56
1:B:404:ILE:HD11	1:B:460:VAL:HG13	1.88	0.56
2:C:95:ASP:HA	2:C:98:LYS:HE2	1.87	0.56
4:A:705:PGT:H132	4:B:704:PGT:C13	2.36	0.56
1:B:197:LEU:HA	1:B:200:PHE:CE2	2.41	0.56
1:B:44:VAL:HG12	1:B:45:VAL:HG13	1.88	0.56
1:B:187:LEU:HD13	1:B:423:VAL:HG22	1.86	0.56
2:D:66:ILE:HD13	2:D:121:LEU:HD21	1.87	0.55
1:A:44:VAL:HG12	1:A:45:VAL:HG13	1.88	0.55
1:A:197:LEU:HA	1:A:200:PHE:CE2	2.41	0.55
1:B:500:HIS:NE2	3:B:702:85R:O12	2.40	0.55
2:D:122:TYR:CD2	2:D:138:VAL:HG11	2.42	0.55
4:A:705:PGT:H132	4:B:704:PGT:C14	2.37	0.54
1:A:125:LEU:CD2	4:A:704:PGT:H483	2.37	0.54

Continued on next page...

Continued from previous page...

Atom-1	Atom-2	Interatomic distance (Å)	Clash overlap (Å)
1:B:493:ASP:OD2	2:D:56:GLU:HG2	2.07	0.54
2:C:122:TYR:CD2	2:C:138:VAL:HG11	2.42	0.54
1:B:142:THR:OG1	1:B:397:ARG:NH1	2.41	0.54
1:A:218:LEU:HD21	1:A:313:THR:HG23	1.90	0.54
1:A:142:THR:OG1	1:A:397:ARG:NH1	2.41	0.53
1:A:404:ILE:HD11	1:A:460:VAL:HG13	1.91	0.53
1:B:138:GLY:O	3:B:702:85R:O6	2.26	0.53
1:A:138:GLY:O	3:A:701:85R:O6	2.26	0.53
1:A:319:CYS:O	1:A:323:VAL:HB	2.09	0.53
4:A:705:PGT:H132	4:B:704:PGT:H132	1.90	0.53
1:B:115:PHE:HA	1:B:119:LEU:HB2	1.91	0.53
1:B:319:CYS:O	1:B:323:VAL:HB	2.09	0.53
1:B:218:LEU:HD21	1:B:313:THR:HG23	1.90	0.52
4:A:704:PGT:H452	4:A:706:PGT:H471	1.91	0.52
2:C:166:ASP:OD1	2:C:167:GLY:N	2.38	0.52
1:A:115:PHE:HA	1:A:119:LEU:HB2	1.91	0.52
1:A:500:HIS:NE2	3:A:701:85R:O12	2.40	0.52
1:A:427:ASP:HB3	1:A:430:LYS:HB2	1.92	0.52
1:B:122:PRO:HB3	1:B:342:LEU:HB3	1.90	0.52
1:A:125:LEU:HD23	4:A:704:PGT:C48	2.39	0.52
2:C:132:ARG:HA	2:C:160:ILE:HD11	1.92	0.51
1:A:421:ALA:O	1:A:425:LEU:HG	2.10	0.51
1:B:421:ALA:O	1:B:425:LEU:HG	2.10	0.51
2:C:114:LYS:HB3	2:C:189:MET:SD	2.51	0.51
2:D:62:LEU:O	2:D:66:ILE:HG12	2.11	0.51
1:A:660:ARG:NH2	2:C:52:GLN:HG2	2.26	0.51
1:B:165:VAL:HG11	1:B:373:LEU:HD12	1.93	0.51
2:C:62:LEU:O	2:C:66:ILE:HG12	2.11	0.51
2:D:114:LYS:HB3	2:D:189:MET:SD	2.51	0.51
2:D:132:ARG:HA	2:D:160:ILE:HD11	1.92	0.50
1:B:374:THR:O	1:B:378:ILE:HG12	2.12	0.50
1:A:125:LEU:CD2	4:A:704:PGT:C48	2.90	0.50
1:B:323:VAL:HG13	1:B:327:ILE:CD1	2.42	0.50
1:B:427:ASP:HB3	1:B:430:LYS:HB2	1.92	0.50
1:A:323:VAL:HG13	1:A:327:ILE:CD1	2.42	0.50
1:B:488:LEU:HD13	2:D:189:MET:HA	1.94	0.50
1:A:52:VAL:HG21	1:B:303:MET:HB2	1.93	0.49
1:A:347:GLU:OE1	1:A:638:HIS:NE2	2.46	0.49
1:A:165:VAL:HG11	1:A:373:LEU:HD12	1.93	0.49
1:A:374:THR:O	1:A:378:ILE:HG12	2.12	0.49
2:D:116:HIS:HA	2:D:173:PHE:HE2	1.78	0.49

Continued on next page...

Continued from previous page...

Atom-1	Atom-2	Interatomic distance (Å)	Clash overlap (Å)
1:B:191:VAL:HG22	1:B:220:ASN:HD21	1.78	0.49
2:C:129:LYS:HD2	2:C:170:ILE:HD12	1.94	0.49
2:C:116:HIS:HA	2:C:173:PHE:HE2	1.77	0.49
2:D:129:LYS:HD2	2:D:170:ILE:HD12	1.94	0.49
1:A:269:ALA:HB2	1:A:315:CYS:HA	1.95	0.49
1:A:480:HIS:CD2	2:C:180:LEU:HD21	2.49	0.48
1:B:342:LEU:HD11	4:B:701:PGT:H482	1.95	0.48
1:B:269:ALA:HB2	1:B:315:CYS:HA	1.95	0.48
1:A:191:VAL:HG22	1:A:220:ASN:ND2	2.29	0.48
1:A:476:ASN:HD22	2:C:163:ALA:HB2	1.79	0.48
1:B:301:SER:HB2	1:B:308:ALA:HA	1.96	0.48
1:A:348:THR:O	1:A:352:MET:HG2	2.13	0.48
2:C:28:ILE:HA	2:C:84:MET:HE2	1.96	0.47
2:C:49:GLU:HA	2:C:52:GLN:HB2	1.96	0.47
1:B:82:VAL:HG22	1:B:454:LEU:HD21	1.96	0.47
1:B:283:ARG:HH11	1:B:328:SER:HB3	1.80	0.47
1:A:301:SER:HB2	1:A:308:ALA:HA	1.96	0.47
2:C:65:ARG:HD2	2:C:124:LEU:HD21	1.96	0.47
1:A:54:ASP:HA	4:A:702:PGT:H362	1.95	0.47
1:A:82:VAL:HG22	1:A:454:LEU:HD21	1.97	0.47
1:A:283:ARG:HH11	1:A:328:SER:HB3	1.80	0.47
2:C:83:PHE:O	2:C:87:LEU:HB2	2.14	0.47
2:D:65:ARG:HD2	2:D:124:LEU:HD21	1.96	0.47
2:D:83:PHE:O	2:D:87:LEU:HB2	2.14	0.47
1:A:148:VAL:HG22	1:A:223:VAL:HG21	1.96	0.47
1:A:656:THR:O	1:A:660:ARG:N	2.47	0.47
1:A:125:LEU:HD23	4:A:704:PGT:H483	1.97	0.46
1:A:655:ARG:NH2	2:C:140:ARG:HD3	2.30	0.46
1:A:291:PHE:CE1	1:A:339:MET:HG3	2.51	0.46
1:A:283:ARG:NH1	1:A:328:SER:HB3	2.30	0.46
4:A:704:PGT:H441	4:A:704:PGT:H412	1.65	0.46
4:A:704:PGT:C46	4:A:706:PGT:H471	2.45	0.46
4:A:705:PGT:H131	4:B:704:PGT:H141	1.97	0.46
1:B:191:VAL:HG22	1:B:220:ASN:ND2	2.29	0.46
1:B:660:ARG:NH2	2:D:52:GLN:HG2	2.30	0.46
1:A:191:VAL:HG22	1:A:220:ASN:HD21	1.78	0.46
1:A:124:VAL:HG11	1:A:309:ILE:HG23	1.98	0.46
1:A:303:MET:HB2	1:B:52:VAL:HG21	1.97	0.46
1:B:127:ALA:HB3	1:B:218:LEU:HD13	1.98	0.46
1:B:656:THR:O	1:B:660:ARG:N	2.47	0.46
4:B:701:PGT:H461	4:B:706:PGT:H462	1.97	0.46

Continued on next page...

Continued from previous page...

Atom-1	Atom-2	Interatomic distance (Å)	Clash overlap (Å)
1:B:124:VAL:HG11	1:B:309:ILE:HG23	1.98	0.46
2:C:57:LEU:HD23	2:C:57:LEU:HA	1.82	0.46
2:D:48:ARG:HD3	2:D:71:PHE:CE2	2.51	0.46
2:D:49:GLU:HA	2:D:52:GLN:HB2	1.96	0.46
1:B:291:PHE:CE1	1:B:339:MET:HG3	2.51	0.46
2:D:28:ILE:HA	2:D:84:MET:HE2	1.97	0.46
1:A:492:GLU:OE2	1:A:629:GLN:NE2	2.49	0.45
1:B:283:ARG:NH1	1:B:328:SER:HB3	2.30	0.45
1:A:480:HIS:HD2	2:C:180:LEU:HD21	1.82	0.45
1:B:148:VAL:HG22	1:B:223:VAL:HG21	1.97	0.45
2:C:48:ARG:HD3	2:C:71:PHE:CE2	2.51	0.45
1:A:127:ALA:HB3	1:A:218:LEU:HD13	1.98	0.45
1:B:398:MET:SD	1:B:497:GLN:HB2	2.57	0.45
1:A:222:ALA:HB1	1:A:310:LEU:HG	1.99	0.45
2:D:175:GLU:HA	2:D:178:LYS:HE3	1.99	0.45
1:B:492:GLU:OE2	1:B:629:GLN:NE2	2.49	0.45
4:A:704:PGT:C46	4:A:706:PGT:H451	2.44	0.44
1:B:656:THR:HG21	2:D:58:ALA:HB1	2.00	0.44
1:A:126:ASP:OD1	1:A:340:LYS:HE2	2.17	0.44
1:A:631:TYR:OH	1:A:649:ASP:OD1	2.24	0.44
2:D:92:PRO:HD3	2:D:191:ILE:O	2.18	0.44
1:A:95:LEU:HD12	1:A:352:MET:SD	2.58	0.44
1:A:398:MET:SD	1:A:497:GLN:HB2	2.57	0.44
1:A:457:LYS:HB3	1:A:458:PRO:HD3	1.99	0.44
4:A:704:PGT:C45	4:A:706:PGT:H471	2.47	0.44
1:B:499:GLY:HA3	1:B:504:ARG:HH12	1.82	0.44
1:A:655:ARG:HH22	2:C:140:ARG:HD3	1.81	0.44
1:B:126:ASP:OD1	1:B:340:LYS:HE2	2.17	0.44
1:A:142:THR:HG23	1:A:393:LEU:HD13	1.98	0.44
1:A:476:ASN:ND2	2:C:163:ALA:HB2	2.33	0.44
1:B:222:ALA:HB1	1:B:310:LEU:HG	1.99	0.44
1:B:414:LEU:HD13	1:B:449:VAL:HA	1.99	0.44
2:D:57:LEU:HA	2:D:57:LEU:HD23	1.82	0.44
1:A:499:GLY:HA3	1:A:504:ARG:HH12	1.82	0.44
1:A:184:PHE:O	1:A:188:MET:HB2	2.17	0.44
1:B:184:PHE:O	1:B:188:MET:HB2	2.17	0.44
2:C:106:GLU:N	2:C:107:PRO:HD3	2.33	0.44
2:D:106:GLU:N	2:D:107:PRO:HD3	2.33	0.44
1:B:142:THR:HG23	1:B:393:LEU:HD13	1.98	0.44
1:B:660:ARG:CZ	2:D:52:GLN:HG2	2.48	0.44
1:B:130:PHE:HZ	1:B:336:ARG:HB2	1.83	0.43

Continued on next page...

Continued from previous page...

Atom-1	Atom-2	Interatomic distance (Å)	Clash overlap (Å)
1:B:457:LYS:HB3	1:B:458:PRO:HD3	1.99	0.43
1:A:108:PHE:CG	1:A:356:ILE:HD13	2.53	0.43
1:A:130:PHE:HZ	1:A:336:ARG:HB2	1.83	0.43
1:B:331:SER:O	1:B:335:VAL:HG23	2.18	0.43
2:C:175:GLU:HA	2:C:178:LYS:HE3	1.99	0.43
1:A:331:SER:O	1:A:335:VAL:HG23	2.18	0.43
2:D:166:ASP:OD1	2:D:167:GLY:N	2.38	0.43
1:A:329:GLU:O	1:A:333:THR:HG23	2.18	0.43
2:C:92:PRO:HD3	2:C:191:ILE:O	2.18	0.42
1:B:329:GLU:O	1:B:333:THR:HG23	2.18	0.42
1:A:414:LEU:HD13	1:A:449:VAL:HA	2.02	0.42
1:A:515:LEU:HD12	1:A:515:LEU:HA	1.72	0.42
1:A:620:LEU:O	1:A:624:LEU:HD23	2.19	0.42
1:B:351:PHE:HD1	1:B:351:PHE:HA	1.73	0.42
1:A:310:LEU:HD23	1:A:310:LEU:HA	1.90	0.42
1:B:130:PHE:CZ	1:B:336:ARG:HB2	2.55	0.42
1:B:398:MET:HE3	2:D:191:ILE:HG21	2.01	0.42
1:B:429:ASP:OD1	1:B:429:ASP:N	2.46	0.42
1:B:515:LEU:HD12	1:B:515:LEU:HA	1.72	0.42
1:B:208:VAL:O	1:B:211:ILE:HG22	2.19	0.42
2:D:124:LEU:HD23	2:D:124:LEU:HA	1.86	0.42
1:A:61:TRP:HZ2	1:A:356:ILE:HD11	1.84	0.42
1:A:283:ARG:HD3	1:A:286:GLU:OE1	2.19	0.42
1:A:211:ILE:HD12	1:A:211:ILE:HA	1.93	0.42
1:B:447:PHE:O	1:B:451:PHE:HB3	2.20	0.42
1:A:130:PHE:CZ	1:A:336:ARG:HB2	2.55	0.42
4:A:703:PGT:C11	4:A:704:PGT:H361	2.49	0.42
1:B:283:ARG:HD3	1:B:286:GLU:OE1	2.19	0.42
1:B:348:THR:O	1:B:352:MET:HG2	2.19	0.42
1:A:208:VAL:O	1:A:211:ILE:HG22	2.19	0.42
1:A:447:PHE:O	1:A:451:PHE:HB3	2.20	0.42
1:B:187:LEU:HD13	1:B:423:VAL:CG2	2.50	0.42
1:B:482:ARG:HD2	1:B:627:PRO:HD3	2.01	0.42
1:B:487:ILE:HG12	2:D:66:ILE:HD11	2.02	0.42
1:B:640:LEU:HD23	1:B:640:LEU:HA	1.83	0.42
1:A:530:ARG:O	1:A:534:VAL:HG13	2.20	0.41
1:A:660:ARG:NH2	2:C:64:ASP:OD1	2.53	0.41
1:B:76:HIS:CE1	1:B:80:SER:HB3	2.55	0.41
1:B:279:THR:OG1	1:B:286:GLU:OE2	2.31	0.41
1:B:530:ARG:O	1:B:534:VAL:HG13	2.20	0.41
1:B:620:LEU:O	1:B:624:LEU:HD23	2.19	0.41

Continued on next page...

Continued from previous page...

Atom-1	Atom-2	Interatomic distance (Å)	Clash overlap (Å)
4:B:701:PGT:C46	4:B:706:PGT:H462	2.51	0.41
1:A:70:ILE:HA	1:B:282:VAL:HG11	2.03	0.41
4:A:704:PGT:H442	4:A:704:PGT:H471	1.29	0.41
1:A:398:MET:HE3	2:C:191:ILE:HG21	2.02	0.41
1:A:423:VAL:HG12	1:A:438:VAL:HG22	2.03	0.41
1:A:482:ARG:HD2	1:A:627:PRO:HD3	2.01	0.41
1:A:655:ARG:NH2	2:C:140:ARG:O	2.43	0.41
1:A:108:PHE:CZ	4:A:702:PGT:H381	2.56	0.41
1:A:349:ILE:HD13	4:A:703:PGT:H142	2.02	0.41
2:D:107:PRO:O	2:D:113:ASN:ND2	2.54	0.41
1:A:76:HIS:CE1	1:A:80:SER:HB3	2.56	0.41
1:A:199:VAL:HG22	1:A:457:LYS:HB2	2.02	0.41
1:A:620:LEU:HG	1:A:624:LEU:HD23	2.03	0.41
1:B:423:VAL:HG12	1:B:438:VAL:HG22	2.03	0.41
1:B:480:HIS:CD2	2:D:180:LEU:HD21	2.56	0.41
2:C:31:LEU:HD13	2:C:87:LEU:HD23	2.03	0.41
1:A:116:PHE:O	1:A:298:TYR:OH	2.36	0.41
1:B:151:THR:OG1	1:B:220:ASN:HB2	2.21	0.41
2:C:126:LYS:HB3	2:C:126:LYS:HE2	1.88	0.41
4:A:704:PGT:C40	4:A:705:PGT:C11	2.92	0.40
2:C:31:LEU:HD23	2:C:31:LEU:HA	1.87	0.40
1:A:63:LEU:HB2	1:B:292:ILE:HG21	2.03	0.40
1:A:276:THR:HG21	1:A:323:VAL:HG22	2.03	0.40
1:A:287:PRO:HA	1:A:335:VAL:HG22	2.03	0.40
1:A:323:VAL:O	1:A:324:LYS:HG2	2.21	0.40
1:B:272:LEU:HG	1:B:323:VAL:HG21	2.03	0.40
1:B:276:THR:HG21	1:B:323:VAL:HG22	2.03	0.40
1:A:272:LEU:HG	1:A:323:VAL:HG21	2.03	0.40
1:B:625:TYR:OH	1:B:651:GLU:OE2	2.21	0.40
1:B:199:VAL:HG22	1:B:457:LYS:HB2	2.02	0.40
1:B:620:LEU:HG	1:B:624:LEU:HD23	2.03	0.40
1:B:323:VAL:O	1:B:324:LYS:HG2	2.21	0.40
2:D:31:LEU:HD13	2:D:87:LEU:HD23	2.03	0.40

There are no symmetry-related clashes.

5.3 Torsion angles

5.3.1 Protein backbone

In the following table, the Percentiles column shows the percent Ramachandran outliers of the chain as a percentile score with respect to all PDB entries followed by that with respect to all EM entries.

The Analysed column shows the number of residues for which the backbone conformation was analysed, and the total number of residues.

Mol	Chain	Analysed	Favoured	Allowed	Outliers	Percentiles	
1	A	535/626 (86%)	519 (97%)	16 (3%)	0	100	100
1	B	534/626 (85%)	518 (97%)	16 (3%)	0	100	100
2	C	183/185 (99%)	173 (94%)	10 (6%)	0	100	100
2	D	183/185 (99%)	173 (94%)	10 (6%)	0	100	100
All	All	1435/1622 (88%)	1383 (96%)	52 (4%)	0	100	100

There are no Ramachandran outliers to report.

5.3.2 Protein sidechains

In the following table, the Percentiles column shows the percent sidechain outliers of the chain as a percentile score with respect to all PDB entries followed by that with respect to all EM entries.

The Analysed column shows the number of residues for which the sidechain conformation was analysed, and the total number of residues.

Mol	Chain	Analysed	Rotameric	Outliers	Percentiles	
1	A	471/548 (86%)	468 (99%)	3 (1%)	86	94
1	B	470/548 (86%)	467 (99%)	3 (1%)	86	94
2	C	168/168 (100%)	165 (98%)	3 (2%)	59	82
2	D	168/168 (100%)	165 (98%)	3 (2%)	59	82
All	All	1277/1432 (89%)	1265 (99%)	12 (1%)	79	91

All (12) residues with a non-rotameric sidechain are listed below:

Mol	Chain	Res	Type
1	A	363	ILE
1	A	408	VAL

Continued on next page...

Continued from previous page...

Mol	Chain	Res	Type
1	A	414	LEU
1	B	347	GLU
1	B	356	ILE
1	B	408	VAL
2	C	13	GLU
2	C	56	GLU
2	C	168	ASP
2	D	13	GLU
2	D	56	GLU
2	D	168	ASP

Sometimes sidechains can be flipped to improve hydrogen bonding and reduce clashes. All (2) such sidechains are listed below:

Mol	Chain	Res	Type
1	A	476	ASN
1	B	476	ASN

5.3.3 RNA [i](#)

There are no RNA molecules in this entry.

5.4 Non-standard residues in protein, DNA, RNA chains [i](#)

There are no non-standard protein/DNA/RNA residues in this entry.

5.5 Carbohydrates [i](#)

There are no monosaccharides in this entry.

5.6 Ligand geometry [i](#)

12 ligands are modelled in this entry.

In the following table, the Counts columns list the number of bonds (or angles) for which Mogul statistics could be retrieved, the number of bonds (or angles) that are observed in the model and the number of bonds (or angles) that are defined in the Chemical Component Dictionary. The Link column lists molecule types, if any, to which the group is linked. The Z score for a bond length (or angle) is the number of standard deviations the observed value is removed from the expected value. A bond length (or angle) with $|Z| > 2$ is considered an outlier worth inspection. RMSZ is the root-mean-square of all Z scores of the bond lengths (or angles).

Mol	Type	Chain	Res	Link	Bond lengths			Bond angles		
					Counts	RMSZ	# Z > 2	Counts	RMSZ	# Z > 2
4	PGT	A	706	-	14,14,50	0.26	0	13,13,56	0.91	0
4	PGT	B	701	-	15,15,50	0.26	0	14,14,56	0.92	0
4	PGT	B	704	-	9,9,50	0.28	0	8,8,56	0.85	0
4	PGT	A	702	-	14,14,50	0.22	0	13,13,56	0.90	0
4	PGT	B	706	-	14,14,50	0.26	0	13,13,56	0.87	0
4	PGT	B	705	-	14,14,50	0.23	0	13,13,56	0.84	0
4	PGT	B	703	-	8,8,50	0.27	0	7,7,56	0.82	0
4	PGT	A	705	-	9,9,50	0.29	0	8,8,56	0.82	0
3	85R	B	702	-	55,55,55	0.97	3 (5%)	65,67,67	1.09	5 (7%)
4	PGT	A	704	-	17,17,50	0.27	0	16,16,56	0.93	0
3	85R	A	701	-	55,55,55	0.97	3 (5%)	65,67,67	1.09	5 (7%)
4	PGT	A	703	-	9,9,50	0.27	0	8,8,56	0.86	0

In the following table, the Chirals column lists the number of chiral outliers, the number of chiral centers analysed, the number of these observed in the model and the number defined in the Chemical Component Dictionary. Similar counts are reported in the Torsion and Rings columns. '-' means no outliers of that kind were identified.

Mol	Type	Chain	Res	Link	Chirals	Torsions	Rings
4	PGT	A	706	-	-	8/12/12/55	-
4	PGT	B	701	-	-	10/13/13/55	-
4	PGT	B	704	-	-	3/7/7/55	-
4	PGT	A	702	-	-	4/12/12/55	-
4	PGT	B	706	-	-	9/12/12/55	-
4	PGT	B	705	-	-	4/12/12/55	-
4	PGT	B	703	-	-	4/6/6/55	-
4	PGT	A	705	-	-	5/7/7/55	-
3	85R	B	702	-	-	26/50/74/74	0/1/1/1
4	PGT	A	704	-	-	13/15/15/55	-
3	85R	A	701	-	-	26/50/74/74	0/1/1/1
4	PGT	A	703	-	-	4/7/7/55	-

All (6) bond length outliers are listed below:

Mol	Chain	Res	Type	Atoms	Z	Observed(Å)	Ideal(Å)
3	A	701	85R	OB1-C8	-3.05	1.39	1.46
3	B	702	85R	OB1-C8	-3.05	1.39	1.46
3	B	702	85R	OA1-CA1	2.71	1.41	1.33
3	A	701	85R	OA1-CA1	2.70	1.41	1.33

Continued on next page...

Continued from previous page...

Mol	Chain	Res	Type	Atoms	Z	Observed(Å)	Ideal(Å)
3	B	702	85R	OB1-CB1	2.11	1.40	1.34
3	A	701	85R	OB1-CB1	2.09	1.40	1.34

All (10) bond angle outliers are listed below:

Mol	Chain	Res	Type	Atoms	Z	Observed(°)	Ideal(°)
3	A	701	85R	C4-C3-C2	3.98	117.76	110.82
3	B	702	85R	C4-C3-C2	3.95	117.72	110.82
3	A	701	85R	OB1-CB1-CB2	3.84	119.78	111.50
3	B	702	85R	OB1-CB1-CB2	3.84	119.78	111.50
3	A	701	85R	OA1-CA1-CA2	2.61	120.09	111.91
3	B	702	85R	OA1-CA1-CA2	2.59	120.04	111.91
3	B	702	85R	C3-C2-C1	2.54	115.49	109.68
3	A	701	85R	C3-C2-C1	2.53	115.45	109.68
3	B	702	85R	C5-C4-C3	2.27	114.78	110.82
3	A	701	85R	C5-C4-C3	2.24	114.73	110.82

There are no chirality outliers.

All (116) torsion outliers are listed below:

Mol	Chain	Res	Type	Atoms
3	A	701	85R	CA6-CA7-CA8-CA9
3	B	702	85R	CA6-CA7-CA8-CA9
4	B	704	PGT	C15-C16-C17-C18
3	A	701	85R	CA4-CA5-CA6-CA7
3	B	702	85R	CA4-CA5-CA6-CA7
3	A	701	85R	CB1-CB2-CB3-CB4
3	B	702	85R	CB1-CB2-CB3-CB4
4	A	704	PGT	C44-C45-C46-C47
4	A	704	PGT	C41-C42-C43-C44
4	A	704	PGT	C34-C35-C36-C37
4	B	706	PGT	C37-C38-C39-C40
4	B	706	PGT	C36-C37-C38-C39
4	B	701	PGT	C43-C44-C45-C46
3	A	701	85R	CB6-CB7-CB8-CB9
3	B	702	85R	CB6-CB7-CB8-CB9
4	A	704	PGT	C32-C33-C34-C35
3	A	701	85R	CA7-CA8-CA9-CAA
3	A	701	85R	CB7-CB8-CB9-CBA
3	B	702	85R	CA7-CA8-CA9-CAA
3	B	702	85R	CB7-CB8-CB9-CBA
4	B	703	PGT	C19-C20-C21-C22

Continued on next page...

Continued from previous page...

Mol	Chain	Res	Type	Atoms
4	B	706	PGT	C38-C39-C40-C41
4	A	705	PGT	C12-C13-C14-C15
4	B	706	PGT	C39-C40-C41-C42
4	B	706	PGT	C40-C41-C42-C43
3	A	701	85R	CBB-CBC-CBD-CBE
3	B	702	85R	CBB-CBC-CBD-CBE
4	A	702	PGT	C41-C42-C43-C44
4	A	706	PGT	C40-C41-C42-C43
4	B	701	PGT	C39-C40-C41-C42
4	A	703	PGT	C13-C14-C15-C16
4	A	706	PGT	C44-C45-C46-C47
4	A	704	PGT	C40-C41-C42-C43
3	A	701	85R	CBC-CBD-CBE-CBF
3	B	702	85R	CBC-CBD-CBE-CBF
4	B	706	PGT	C41-C42-C43-C44
4	A	706	PGT	C39-C40-C41-C42
4	B	706	PGT	C44-C45-C46-C47
3	A	701	85R	CB2-CB3-CB4-CB5
3	B	702	85R	CB2-CB3-CB4-CB5
4	A	703	PGT	C11-C12-C13-C14
4	B	701	PGT	C36-C37-C38-C39
4	B	701	PGT	C34-C35-C36-C37
3	A	701	85R	CA8-CA9-CAA-CAB
3	B	702	85R	CA8-CA9-CAA-CAB
3	A	701	85R	CAA-CAB-CAC-CAD
3	B	702	85R	CAA-CAB-CAC-CAD
4	A	705	PGT	C14-C15-C16-C17
3	A	701	85R	CAD-CAE-CAF-CAG
3	B	702	85R	CAD-CAE-CAF-CAG
3	B	702	85R	CA3-CA4-CA5-CA6
3	A	701	85R	CA3-CA4-CA5-CA6
4	B	701	PGT	C40-C41-C42-C43
4	B	704	PGT	C17-C18-C19-C20
4	B	706	PGT	C45-C46-C47-C48
4	A	706	PGT	C41-C42-C43-C44
4	B	706	PGT	C35-C36-C37-C38
4	A	705	PGT	C11-C12-C13-C14
3	B	702	85R	CB9-CBA-CBB-CBC
3	A	701	85R	CB9-CBA-CBB-CBC
4	B	701	PGT	C33-C34-C35-C36
4	A	706	PGT	C35-C36-C37-C38
3	B	702	85R	CAB-CAC-CAD-CAE

Continued on next page...

Continued from previous page...

Mol	Chain	Res	Type	Atoms
3	B	702	85R	CB3-CB4-CB5-CB6
3	A	701	85R	CAB-CAC-CAD-CAE
3	A	701	85R	CB3-CB4-CB5-CB6
4	A	706	PGT	C45-C46-C47-C48
3	B	702	85R	CA9-CAA-CAB-CAC
3	A	701	85R	CA9-CAA-CAB-CAC
3	A	701	85R	C1-O1-P1-O12
3	B	702	85R	C1-O1-P1-O12
4	B	701	PGT	C45-C46-C47-C48
3	A	701	85R	CBA-CBB-CBC-CBD
3	B	702	85R	CBA-CBB-CBC-CBD
3	B	702	85R	CBD-CBE-CBF-CBG
4	B	705	PGT	C37-C38-C39-C40
3	A	701	85R	CBD-CBE-CBF-CBG
4	B	705	PGT	C38-C39-C40-C41
4	B	705	PGT	C34-C35-C36-C37
4	B	701	PGT	C35-C36-C37-C38
4	A	704	PGT	C38-C39-C40-C41
4	B	701	PGT	C44-C45-C46-C47
3	A	701	85R	C7-C8-C9-OA1
3	B	702	85R	C7-C8-C9-OA1
4	A	705	PGT	C15-C16-C17-C18
4	A	704	PGT	C39-C40-C41-C42
3	A	701	85R	OB1-C8-C9-OA1
3	B	702	85R	OB1-C8-C9-OA1
3	A	701	85R	C7-O13-P1-O11
3	B	702	85R	C7-O13-P1-O11
3	A	701	85R	CB5-CB6-CB7-CB8
3	B	702	85R	CB5-CB6-CB7-CB8
4	B	703	PGT	C17-C18-C19-C20
4	B	701	PGT	C38-C39-C40-C41
4	A	702	PGT	C38-C39-C40-C41
4	A	704	PGT	C45-C46-C47-C48
3	A	701	85R	C1-O1-P1-O13
3	B	702	85R	C1-O1-P1-O13
4	A	704	PGT	C35-C36-C37-C38
4	A	703	PGT	C16-C17-C18-C19
4	A	702	PGT	C42-C43-C44-C45
4	A	702	PGT	C35-C36-C37-C38
4	A	705	PGT	C13-C14-C15-C16
4	B	703	PGT	C16-C17-C18-C19
4	B	703	PGT	C15-C16-C17-C18

Continued on next page...

Continued from previous page...

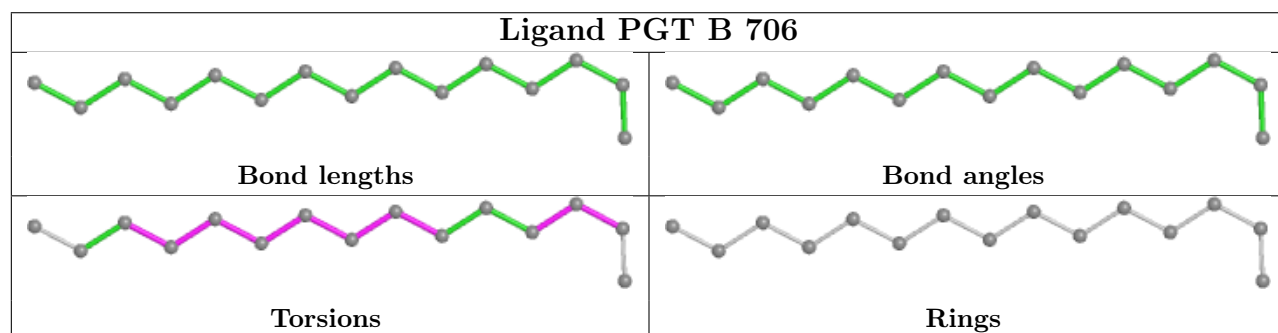
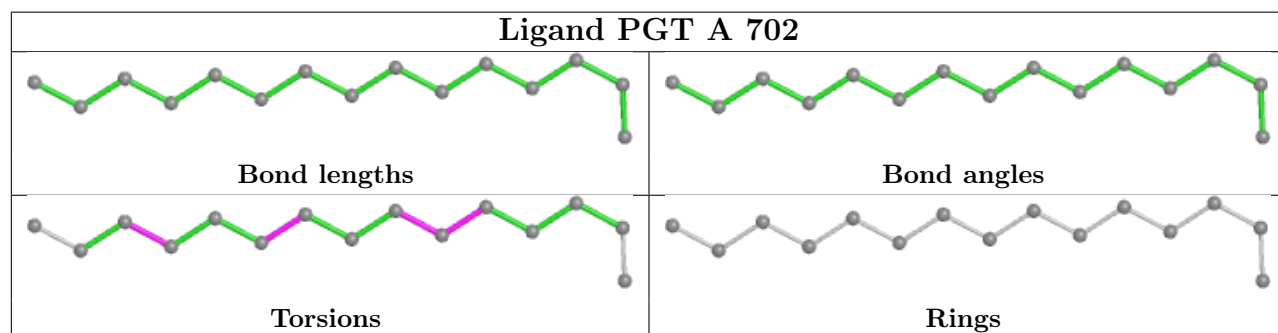
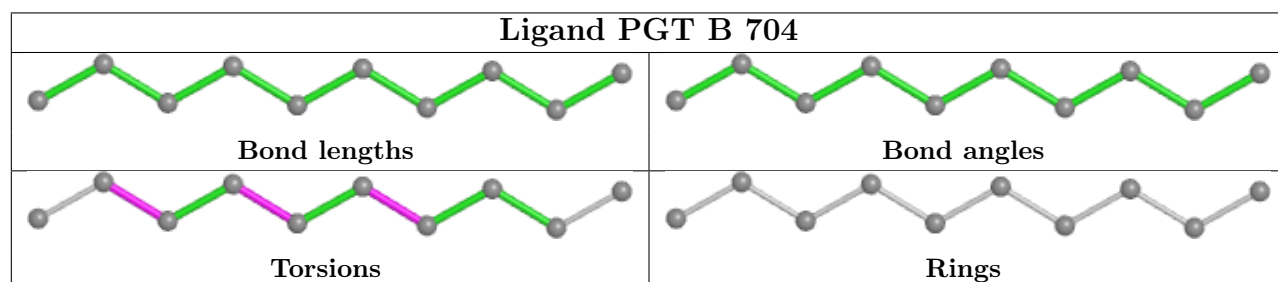
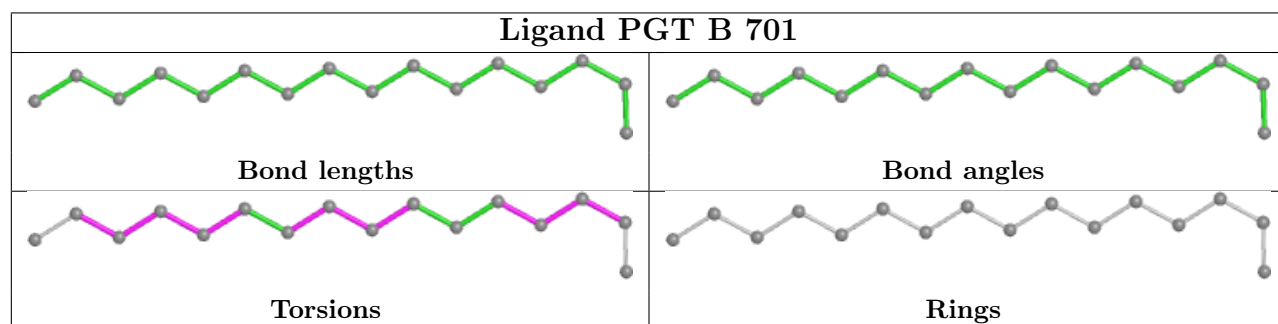
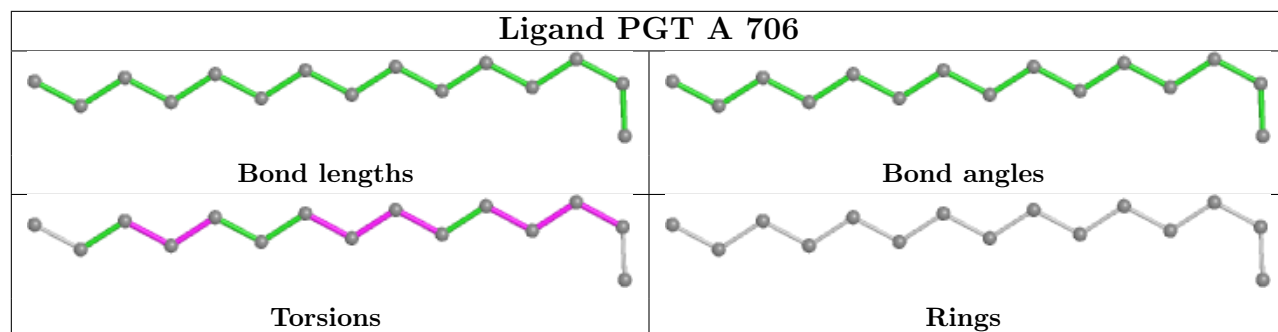
Mol	Chain	Res	Type	Atoms
4	B	705	PGT	C40-C41-C42-C43
4	A	704	PGT	C37-C38-C39-C40
4	A	704	PGT	C43-C44-C45-C46
4	A	704	PGT	C33-C34-C35-C36
4	A	704	PGT	C42-C43-C44-C45
4	A	706	PGT	C36-C37-C38-C39
4	A	706	PGT	C43-C44-C45-C46
4	A	703	PGT	C17-C18-C19-C20
4	B	704	PGT	C13-C14-C15-C16
3	A	701	85R	OA1-CA1-CA2-CA3
3	B	702	85R	OA1-CA1-CA2-CA3

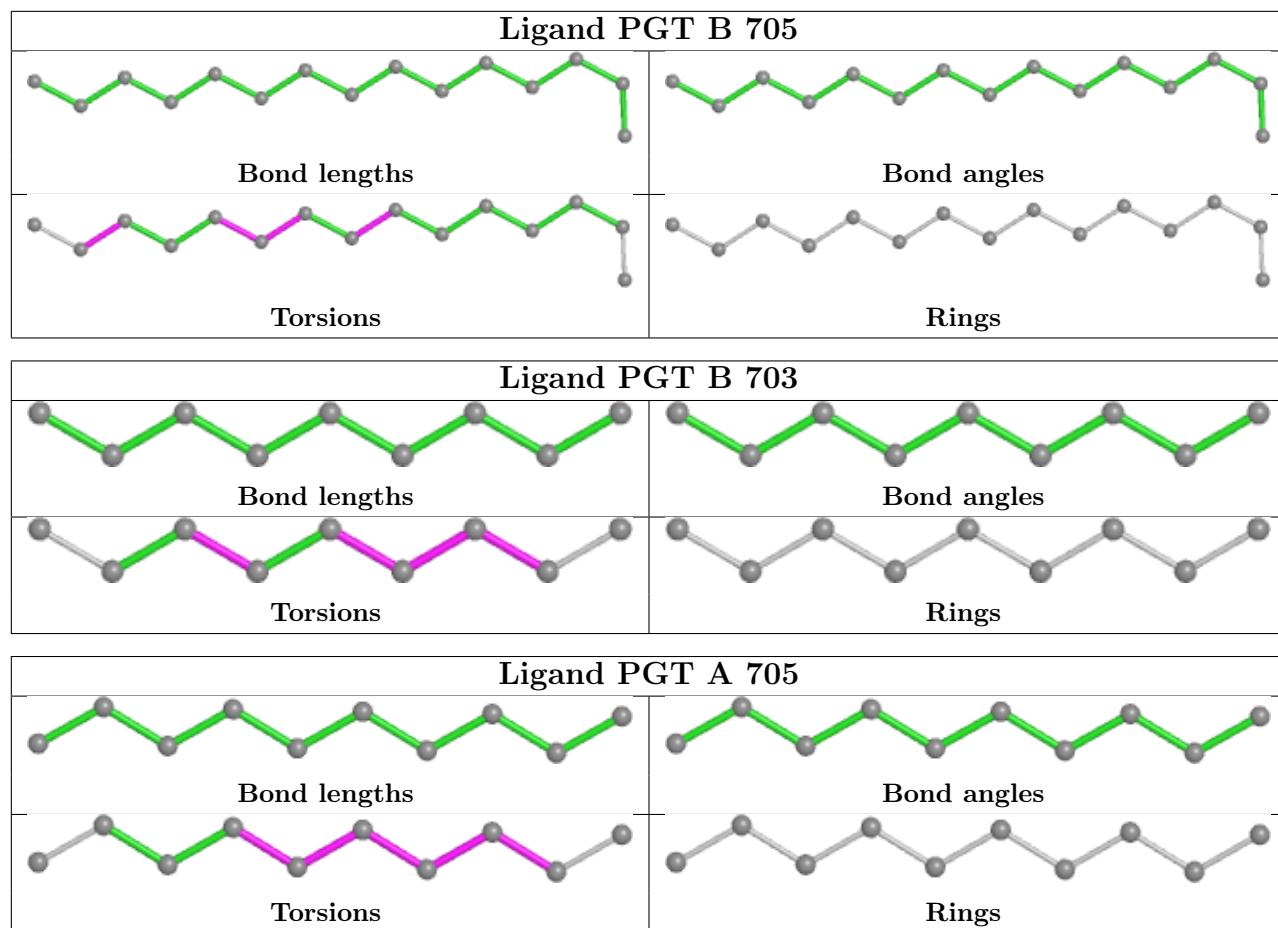
There are no ring outliers.

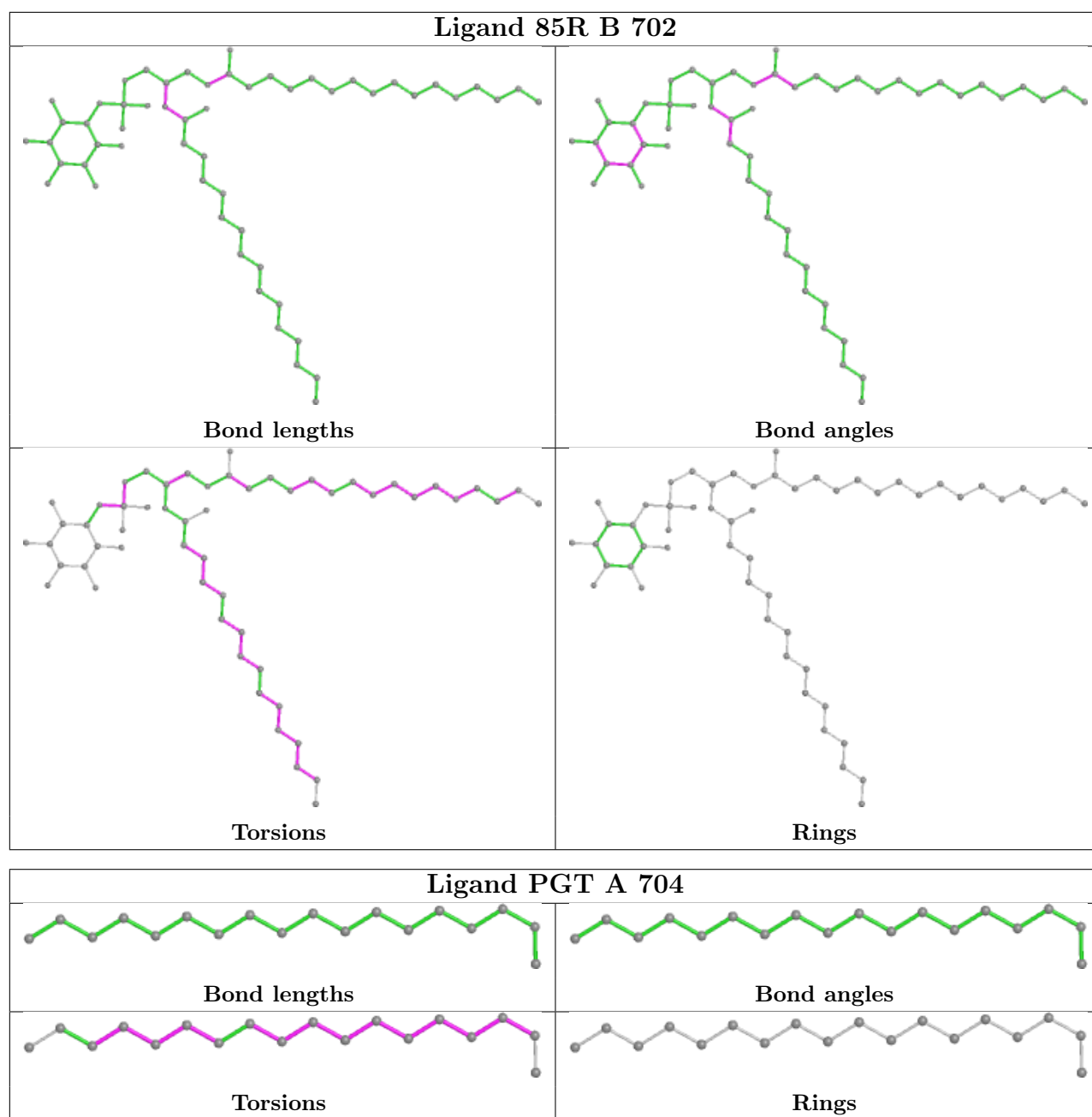
11 monomers are involved in 45 short contacts:

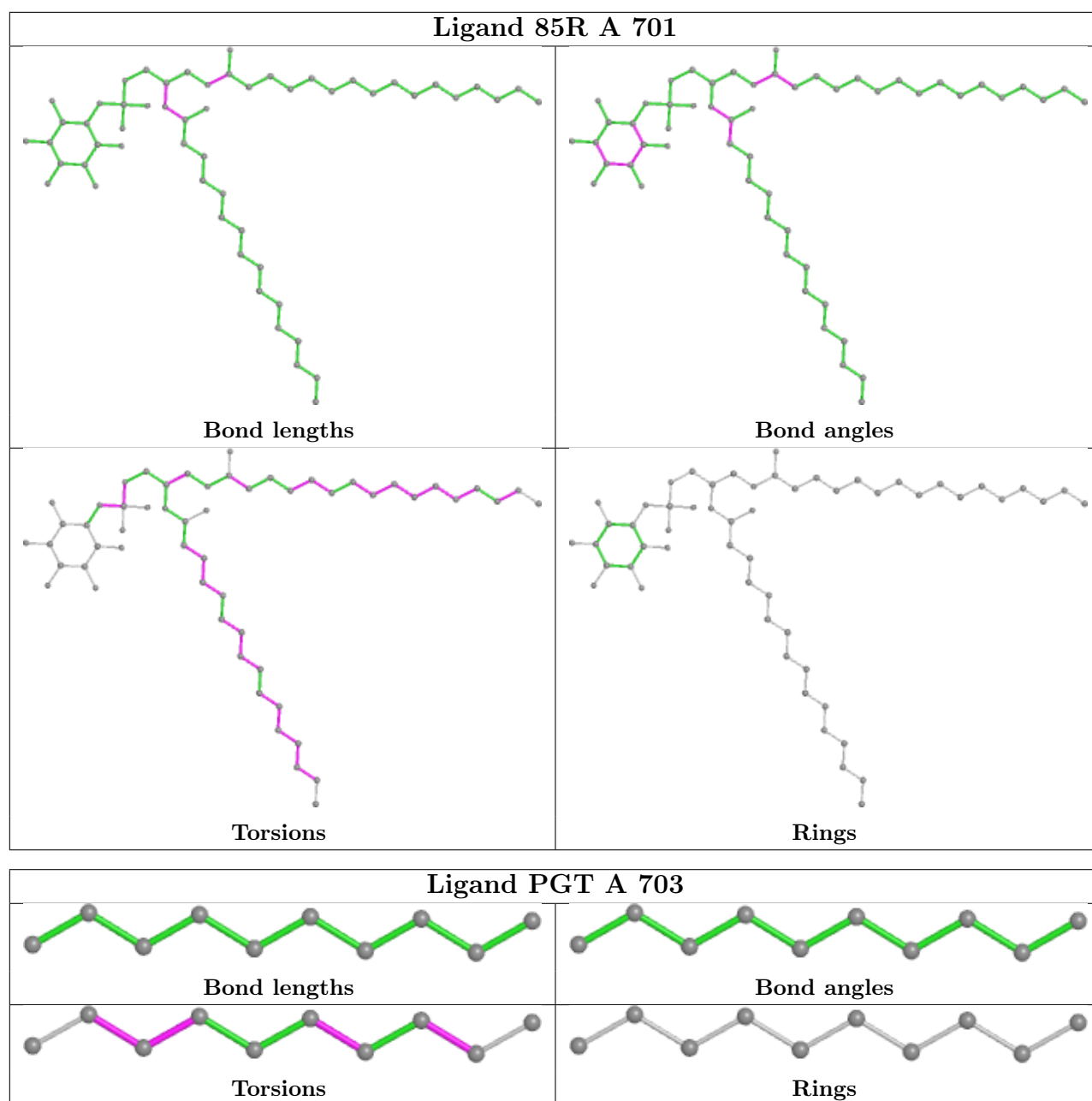
Mol	Chain	Res	Type	Clashes	Symm-Clashes
4	A	706	PGT	9	0
4	B	701	PGT	9	0
4	B	704	PGT	6	0
4	A	702	PGT	2	0
4	B	706	PGT	5	0
4	B	705	PGT	1	0
4	A	705	PGT	8	0
3	B	702	85R	2	0
4	A	704	PGT	23	0
3	A	701	85R	2	0
4	A	703	PGT	2	0

The following is a two-dimensional graphical depiction of Mogul quality analysis of bond lengths, bond angles, torsion angles, and ring geometry for all instances of the Ligand of Interest. In addition, ligands with molecular weight > 250 and outliers as shown on the validation Tables will also be included. For torsion angles, if less than 5% of the Mogul distribution of torsion angles is within 10 degrees of the torsion angle in question, then that torsion angle is considered an outlier. Any bond that is central to one or more torsion angles identified as an outlier by Mogul will be highlighted in the graph. For rings, the root-mean-square deviation (RMSD) between the ring in question and similar rings identified by Mogul is calculated over all ring torsion angles. If the average RMSD is greater than 60 degrees and the minimal RMSD between the ring in question and any Mogul-identified rings is also greater than 60 degrees, then that ring is considered an outlier. The outliers are highlighted in purple. The color gray indicates Mogul did not find sufficient equivalents in the CSD to analyse the geometry.









5.7 Other polymers [i](#)

There are no such residues in this entry.

5.8 Polymer linkage issues [i](#)

There are no chain breaks in this entry.

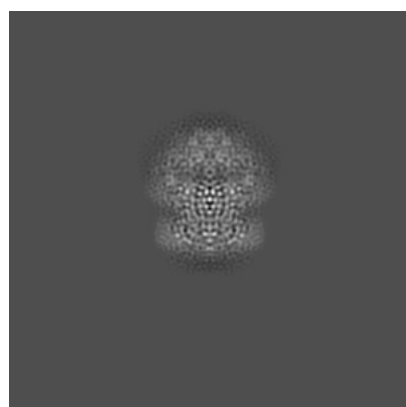
6 Map visualisation [i](#)

This section contains visualisations of the EMDB entry EMD-32971. These allow visual inspection of the internal detail of the map and identification of artifacts.

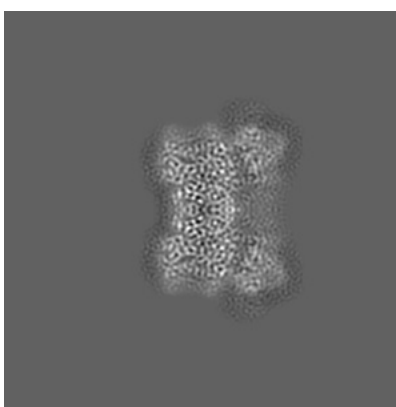
No raw map or half-maps were deposited for this entry and therefore no images, graphs, etc. pertaining to the raw map can be shown.

6.1 Orthogonal projections [i](#)

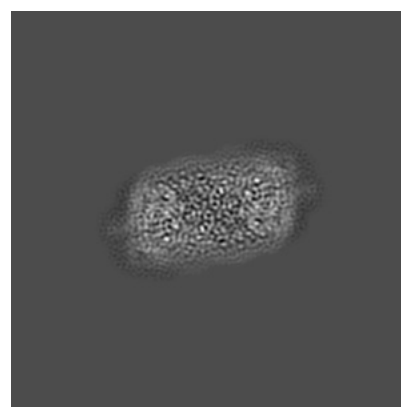
6.1.1 Primary map



X



Y



Z

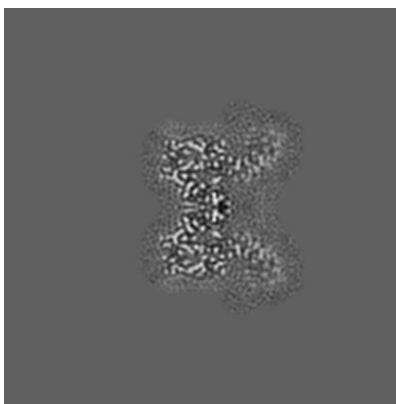
The images above show the map projected in three orthogonal directions.

6.2 Central slices [i](#)

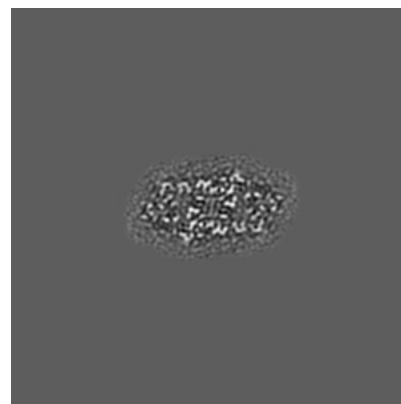
6.2.1 Primary map



X Index: 128



Y Index: 128

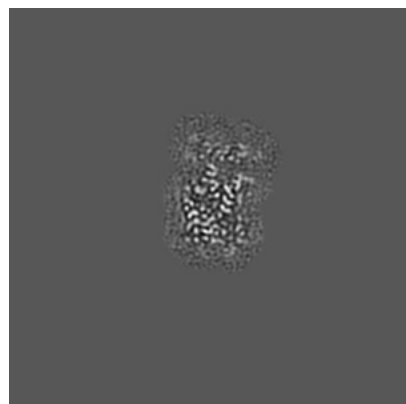


Z Index: 128

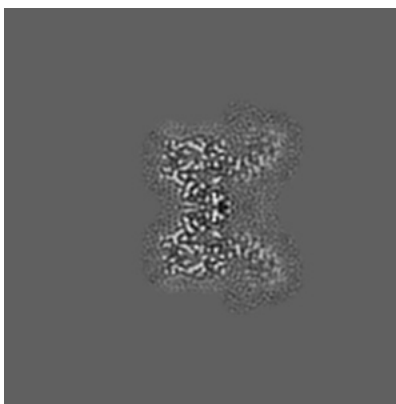
The images above show central slices of the map in three orthogonal directions.

6.3 Largest variance slices [i](#)

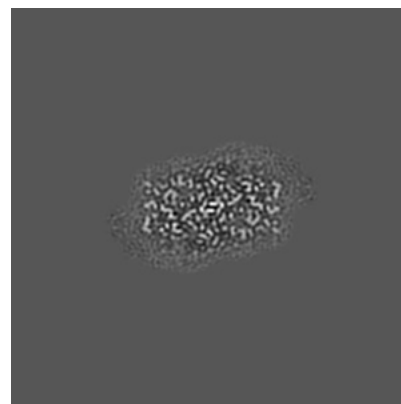
6.3.1 Primary map



X Index: 157



Y Index: 128

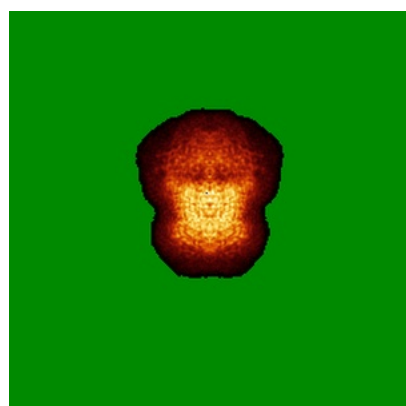


Z Index: 139

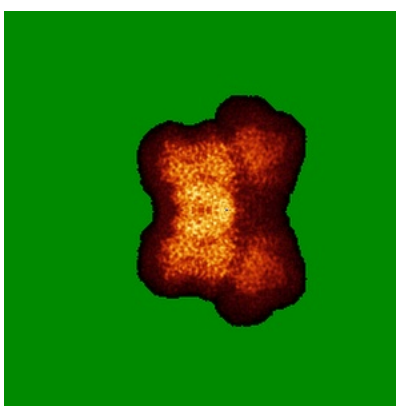
The images above show the largest variance slices of the map in three orthogonal directions.

6.4 Orthogonal standard-deviation projections (False-color) [i](#)

6.4.1 Primary map



X



Y



Z

The images above show the map standard deviation projections with false color in three orthogonal directions. Minimum values are shown in green, max in blue, and dark to light orange shades represent small to large values respectively.

6.5 Orthogonal surface views [i](#)

6.5.1 Primary map



The images above show the 3D surface view of the map at the recommended contour level 0.0197. These images, in conjunction with the slice images, may facilitate assessment of whether an appropriate contour level has been provided.

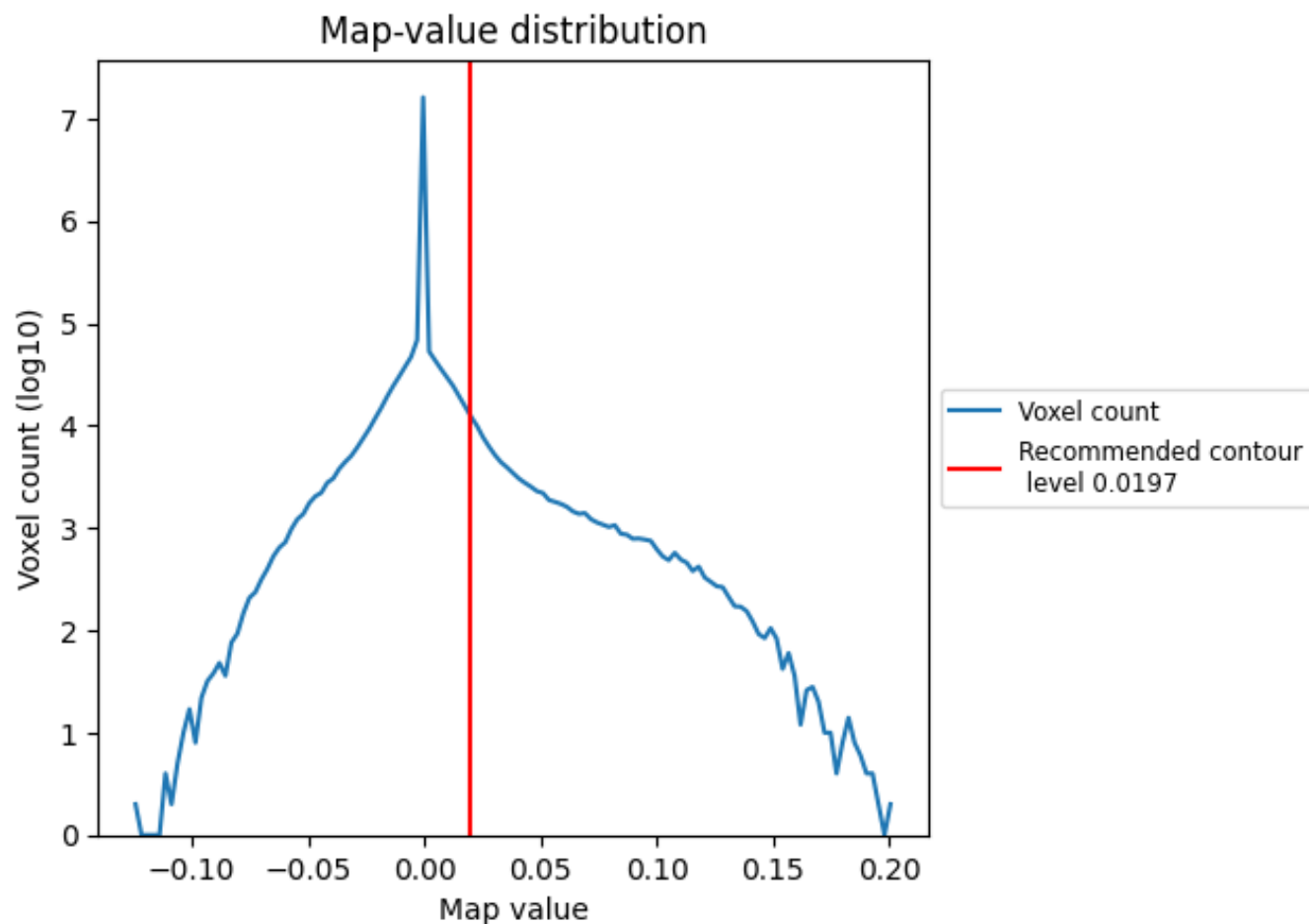
6.6 Mask visualisation [i](#)

This section was not generated. No masks/segmentation were deposited.

7 Map analysis [i](#)

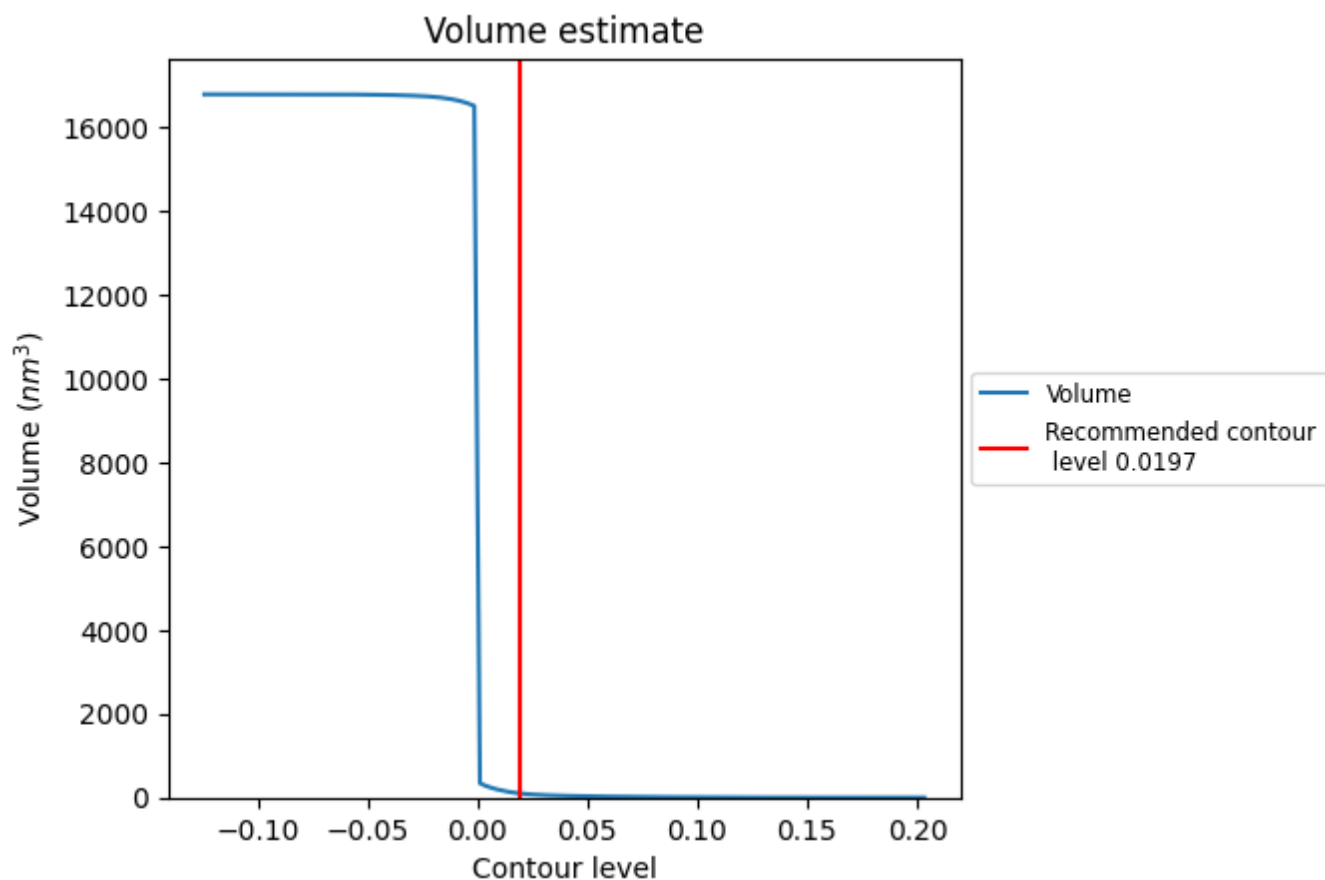
This section contains the results of statistical analysis of the map.

7.1 Map-value distribution [i](#)



The map-value distribution is plotted in 128 intervals along the x-axis. The y-axis is logarithmic. A spike in this graph at zero usually indicates that the volume has been masked.

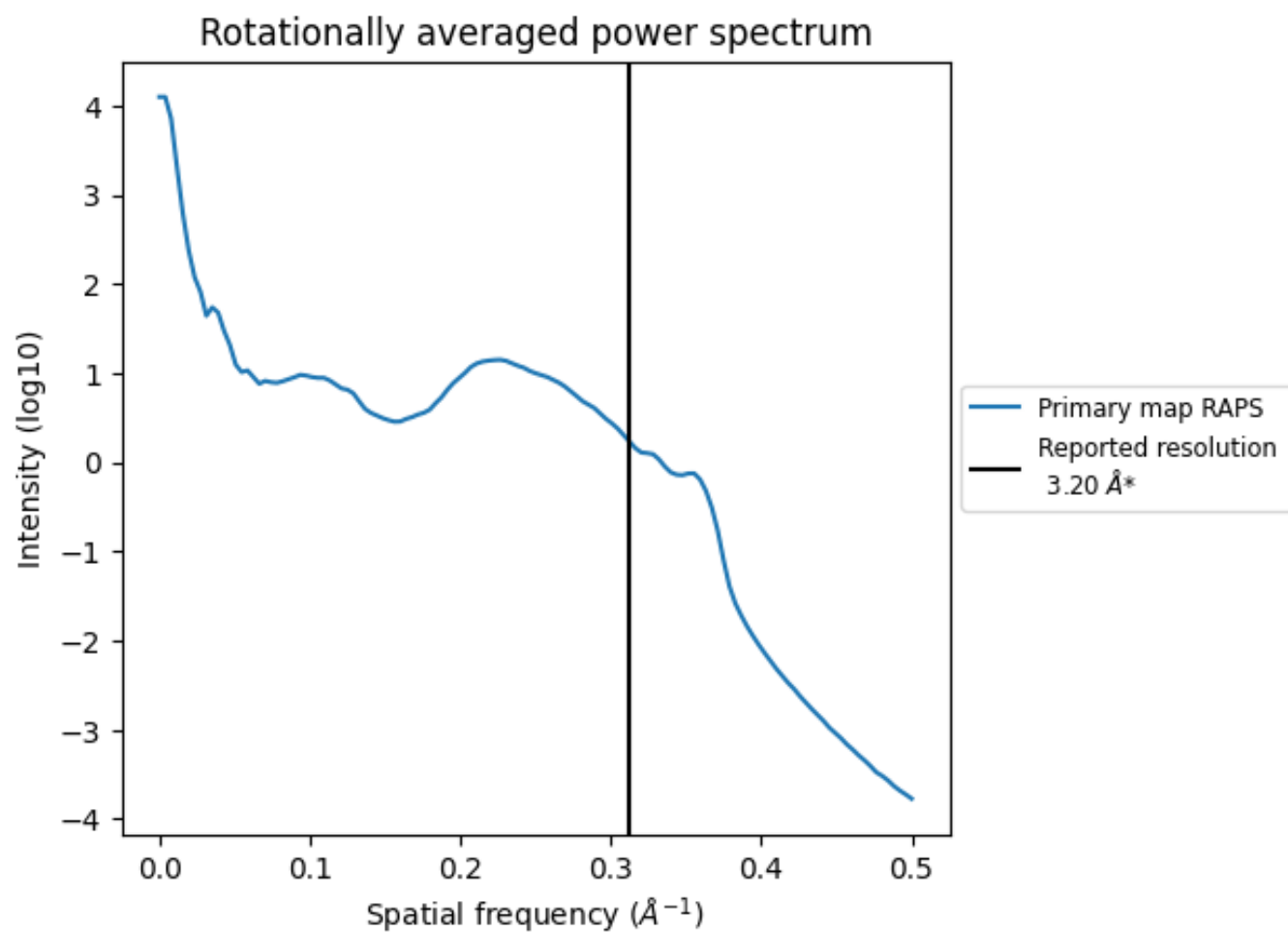
7.2 Volume estimate [i](#)



The volume at the recommended contour level is 97 nm^3 ; this corresponds to an approximate mass of 87 kDa.

The volume estimate graph shows how the enclosed volume varies with the contour level. The recommended contour level is shown as a vertical line and the intersection between the line and the curve gives the volume of the enclosed surface at the given level.

7.3 Rotationally averaged power spectrum ⓘ



*Reported resolution corresponds to spatial frequency of 0.312 Å⁻¹

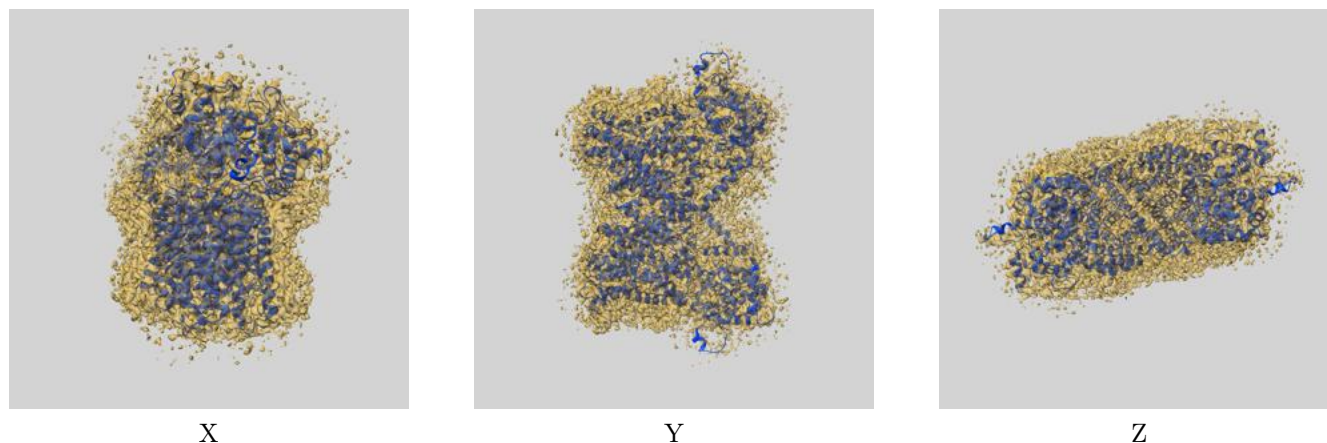
8 Fourier-Shell correlation

This section was not generated. No FSC curve or half-maps provided.

9 Map-model fit [i](#)

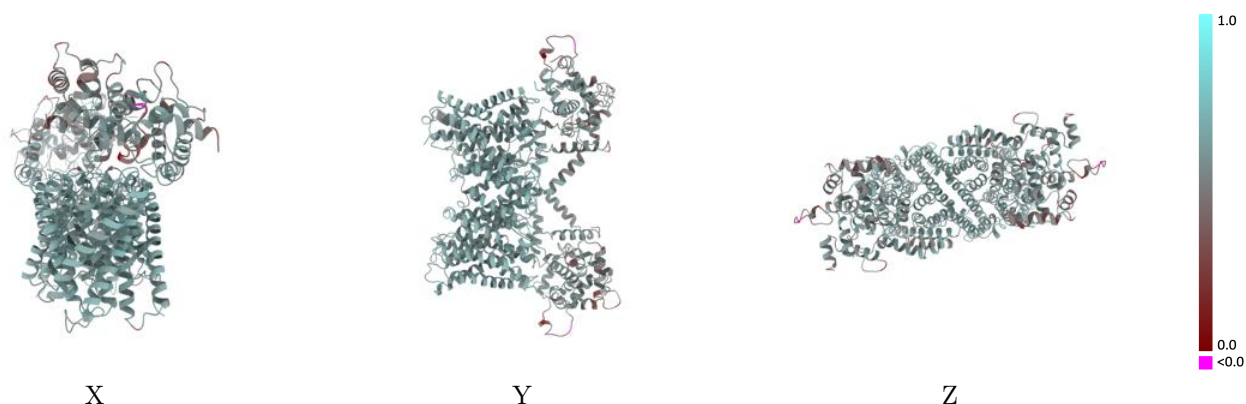
This section contains information regarding the fit between EMDB map EMD-32971 and PDB model 7X2U. Per-residue inclusion information can be found in [section 3](#) on [page 6](#).

9.1 Map-model overlay [i](#)



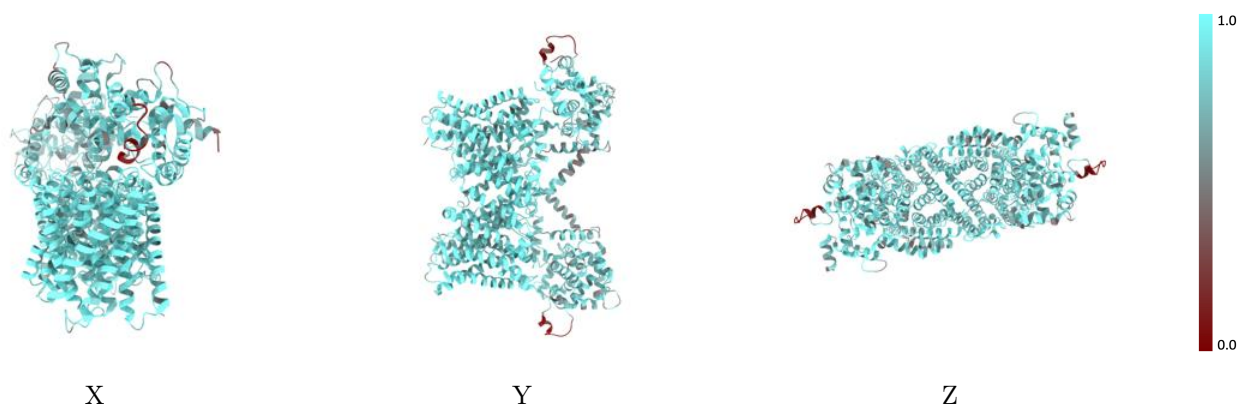
The images above show the 3D surface view of the map at the recommended contour level 0.0197 at 50% transparency in yellow overlaid with a ribbon representation of the model coloured in blue. These images allow for the visual assessment of the quality of fit between the atomic model and the map.

9.2 Q-score mapped to coordinate model [i](#)



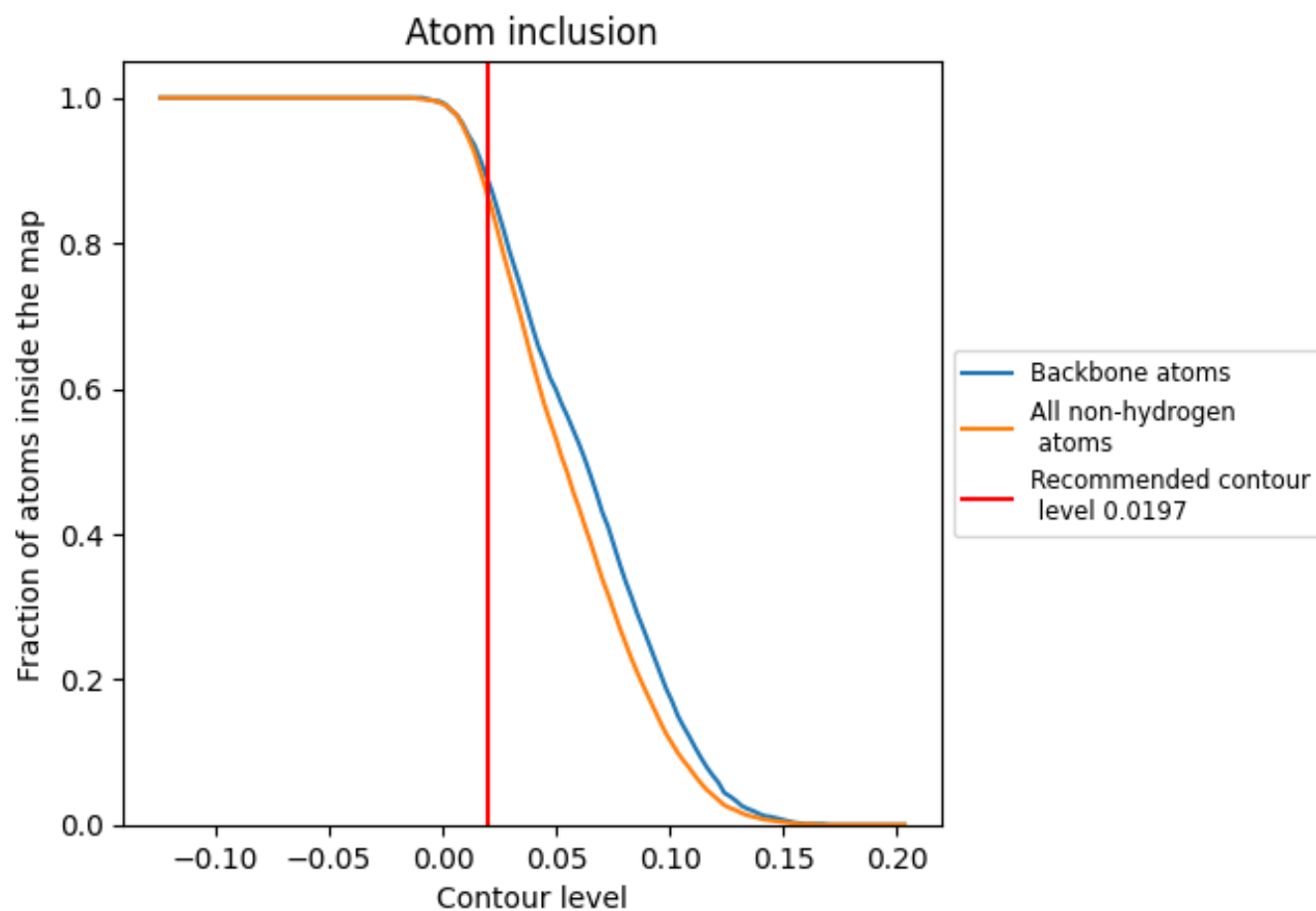
The images above show the model with each residue coloured according to its Q-score. This shows their resolvability in the map with higher Q-score values reflecting better resolvability. Please note: Q-score is calculating the resolvability of atoms, and thus high values are only expected at resolutions at which atoms can be resolved. Low Q-score values may therefore be expected for many entries.

9.3 Atom inclusion mapped to coordinate model [i](#)



The images above show the model with each residue coloured according to its atom inclusion. This shows to what extent they are inside the map at the recommended contour level (0.0197).

9.4 Atom inclusion [i](#)



At the recommended contour level, 89% of all backbone atoms, 87% of all non-hydrogen atoms, are inside the map.

9.5 Map-model fit summary ⓘ

The table lists the average atom inclusion at the recommended contour level (0.0197) and Q-score for the entire model and for each chain.

Chain	Atom inclusion	Q-score
All	<div></div> 0.8670	<div></div> 0.5670
A	<div></div> 0.9020	<div></div> 0.5890
B	<div></div> 0.8990	<div></div> 0.5870
C	<div></div> 0.7680	<div></div> 0.5010
D	<div></div> 0.7650	<div></div> 0.5060

